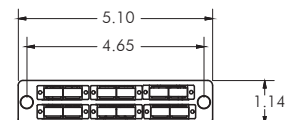
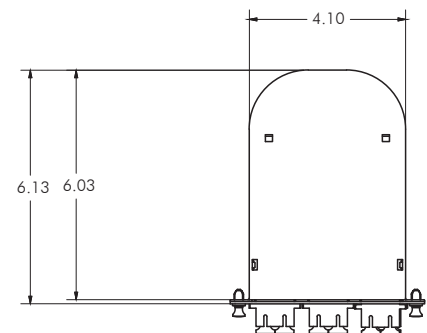


OC Series Splice Cassettes

Hubbell Premise Wiring's OC Series Splice Cassettes are designed to support mission-critical fiber applications, such as data center interconnects and backbones, local area networks, and outside plant applications. OC Series Splice Cassettes include integrated cable management and splice housing to reduce termination time, improve the organization of fiber cable and pigtails inside the enclosure, and streamline ordering. OC Series Splice Cassettes are part of Hubbell's total FIBERHUBB solution.

The cassettes save installers valuable time, requiring fewer components and allowing fiber to be spliced in front of the enclosure—where more space is available—rather than inside the enclosure. The fiber distribution cable can be brought directly to the cassette, with slack and pigtails managed within the cassette housing to ensure tidy installation and simplify updates. OC Series Splice Cassettes reduce costs and total number of components as well, eliminating the need for separate splice trays, adapter panels, and pigtail bundles; only cassettes and a compatible enclosure need to be ordered. Additionally, the improved fusion splice termination process supports the next generation of fiber-dominant networks.

- Includes: cassette splice housing, adapter panel, pigtails and splice sleeves
- Replaces FSP adapter panels, splice trays and pigtail bundles
- 6/12/24 fiber cables or 12 fiber sub-unit route into the cassette
- Enhanced management of pigtails and fiber slack
- Simplified ordering
- Cleaner installations and quicker repairs
- Installation flexibility for small fiber requirements



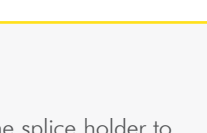
OC Series Splice Cassettes

Fiber Splice Cassette Components

- Cassette housing: base and clear cover
- Strain relief clip
- Adapter panel with zirconia ceramic sleeves
- Splice holder with adhesive foam strip
- 40mm splice sleeves
- 1 meter pigtails, color coded to match distribution fiber
- (2) replacement push pins
- Pigtail test results
- (4) 4" cable ties

Splice Cassettes

Adapter Type	Fiber Type	Fiber Strand Count	Adapter Color	Catalog No.
LC	OM3/OM4	12	Aqua	OCSPLCD12M4
	OS2 SM	12	Blue	OCSPLCD12S2
	OM3/OM4	6	Aqua	OCSPLCD6M4
	OS2 SM	6	Blue	OCSPLCD6S2
	OM3/OM4	24	Aqua	OCSPLCQ24M4
	OS2 SM	24	Blue	OCSPLCQ24S2
LC/APC	OS2 SM	6	Green	OCSPLCDA6S2
		12	Green	OCSPLCDA12S2
SC/APC	OS2 SM	6	Green	OCSPSCA6S2
		12	Green	OCSPSCDA12S2
SC	OM3/OM4	12	Aqua	OCSPSCD12M4
	OS2 SM	12	Blue	OCSPSCD12S2
	OM3/OM4	6	Aqua	OCSPSCD6M4
	OS2 SM	6	Blue	OCSPSCD6S2



Key Installation Notes:

- Cassettes are front loading; incoming distribution cable should be pulled through the enclosure and out the front to perform the splice.
- Once splices are complete and loaded in the holder, attach the incoming fiber to the cassette at the retainer slot with the strain relief clip.
- It is recommended that the adapter panel be removed to splice and manage the cable.
- Review cable routing before securing the splice holder to the cassette.
- Carefully and neatly coil the pigtails and distribution fiber slack into the housing. Attach the cover after ensuring no fibers are above the management tabs.
- Secure the incoming fiber cable to the enclosure per the enclosure instructions, accounting for slide trays and other factors.