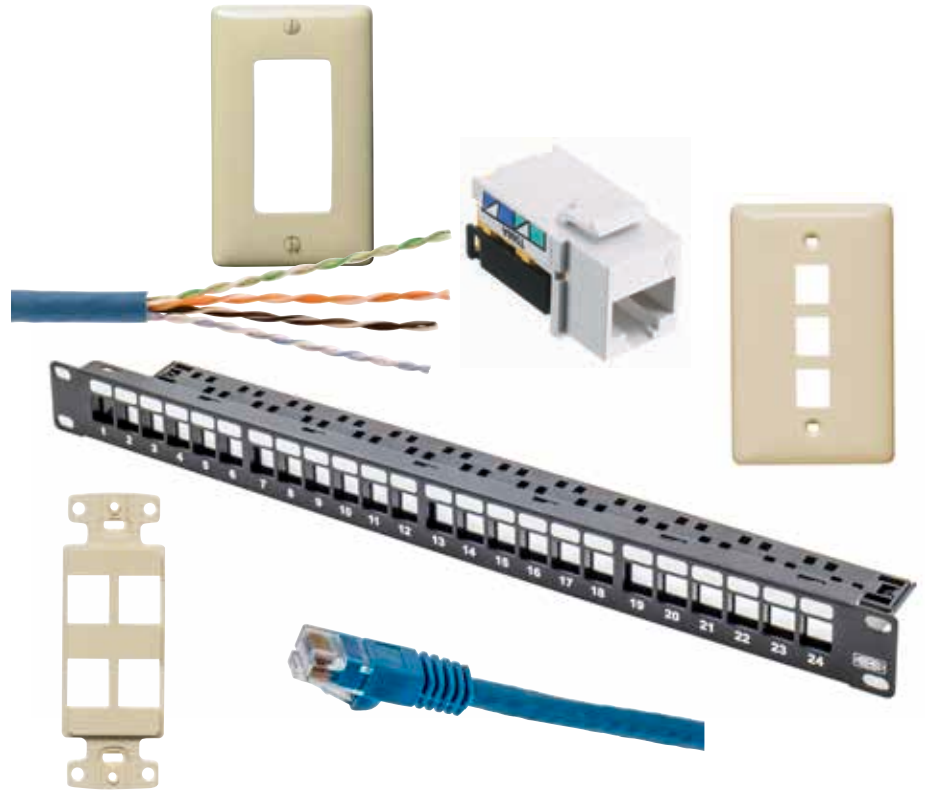


The netSELECT® Category 6 system provides a channel compliant solution that is perfect for residential and light commercial applications where cost efficiency is a priority. The netSELECT solution incorporates all the product quality you expect from Hubbell while providing installer friendly features that enhance installation speed. netSELECT jacks utilize Hubbell's Quicklace termination process and exclusive 1-punch tool to deliver the fastest, most consistent termination in the structured cabling industry. This innovative process reduces termination time by 75% and provides a consistent termination every time.

netSELECT provides a dependable, flexible and compliant system that can accommodate all of today's fast changing requirements.

#### STANDARDS

- ANSI/TIA-568.2-D Category 6 channel
- cULus Listed plates, jacks and cable
- RoHS compliant



**Perfect solution for quick, easy, dependable installs | Installer focused designs prioritize efficiency and reliability | High value with high performance**

#### PATCH CORDS

- Slim, snagless boot for high density ports
- PoE ready
- Conductor: 24AWG pure copper UTP
- Jacket: Flame-retardant PVC-CM rated

#### MULTIMEDIA FACEPLATES

- Smooth profile that matches electrical plates
- High impact-resistant thermoplastic construction
- Accepts all Hubbell keystone mount jacks

#### DECORATOR FRAMES

- Elongated strap for better wall box mounting
- High impact-resistant thermoplastic construction
- Accepts all Hubbell keystone mount jacks

#### CABLE

- TIA and ISO standards compliant
- 23AWG solid copper UTP
- Category 6 channel performance with netSELECT jacks and patch cords

#### JACKS

- Supports Gigabit Ethernet
- Usable bandwidth meets TIA channel specifications
- Exclusive 1-punch tool delivers fastest and most consistent termination in the industry
- Compatible with all Hubbell keystone plates, frames and delivery products

#### PATCH PANELS

- Jack panel provides flexibility and expandability
- Steel frame with silk screened label fields
- Durable black powder coat finish
- Includes cable management bar and wire ties



netSELECT® Category 6 Jacks

	Catalog Number
Single pack	<b>NSJ6xx</b>
25-pack	<b>NSJ6xx25</b>
100-pack*	<b>NSJ6xx100</b>



Snap Fit Jack  
NSJ6W

**xx** = Color: **BK** (Black), **B** (Blue), **GY** (Gray), **GN** (Green), **I** (Ivory), **LA** (Light Almond), **OR** (Orange), **R** (Red), **W** (White) and **Y** (Yellow)  
\*Available in BK, B, LA, OR and W only.

Decorator Frames

	Catalog No.
	<b>NS61pxx</b>

**p** = Ports: **1, 2, 3, 4** and **6**  
**xx** = Color: **BK** (Black), **GY** (Gray), **I** (Ivory), **LA** (Light Almond) and **W** (White)



2-Port  
NS612I

Multimedia Face Plates, 1-Gang

Size	Catalog No.
Standard	<b>NSP1pxx</b>

**p** = Ports: **1, 2, 3, 4** and **6**  
**xx** = Color: **BK** (Black), **GY** (Gray), **I** (Ivory), **LA** (Light Almond) and **W** (White)



3-Port, Standard  
NSP13I

Decorator Faceplates

	Catalog No.
	<b>NP26xx</b>

**xx** = Color: **BK** (Black), **GY** (Gray), **I** (Ivory), **LA** (Light Almond) and **W** (White)



2-Port  
NP26LA

Multimedia Face Plates, 2-Gang

Size	Catalog No.
Standard	<b>NSP2pxx</b>

**p** = Ports: **4** and **6**  
**xx** = Color: **BK** (Black), **GY** (Gray), **I** (Ivory), **LA** (Light Almond) and **W** (White)



4-Port  
NSP24I

netSELECT® Category 6 Patch Cords

Slim boot	Catalog No.
	<b>NSC6xxyy</b>

**xx** = Color: **B** (Blue), **BK** (Black), **GY** (Gray) and **W** (White)  
**yy** = Length (ft): **01'**, **03'**, **05'**, **07'**, **10'** and **15'**



1 Foot  
NSC6B01

Category 6 UTP Cable

1000ft pull box	
Description	Catalog No.
Plenum	<b>C6RPExx</b>
Riser	<b>C6RRExx</b>

**xx** = Color: **B** (Blue), **GY** (Gray), and **W** (White)



Cat 6 Cable  
C6RPEGY

netSELECT® Unloaded Patch Panels

Catalog No.	
<b>NSPJpp</b>	
<b>p</b> = Ports: <b>24</b> and <b>48</b>	NSPJ24