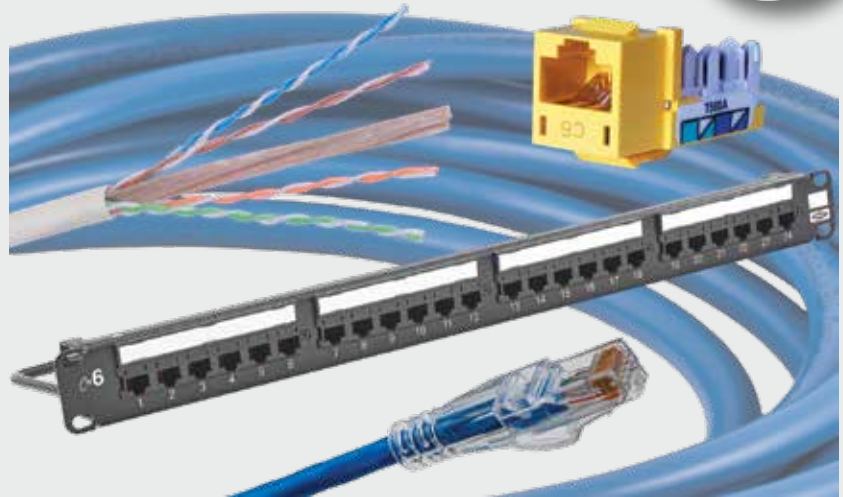


- Third Party Verified Category 6 Component Compliant
- Quick-Lace Termination Geometry Provides Ample Thumb Room
- PoE++ 100W Ready
- Bulk Packaging Reduces Excess Waste on the Job



The NEXTSPEED® Category 6 system is designed to deliver headroom beyond 500MHz for dependable Multi-gigabit Ethernet applications. NEXTSPEED's extended bandwidth provides reliability with zero bit error rate performance for today's high speed digital communications.



### Features

- Guaranteed installed 4-connector channel PSACR performance 8dB above Category 6 channel requirements on all Category 6 System registered installations\*
- Minimum channel capacity of 10 Gbps maximizes dynamic performance for real world applications when qualified per TSB-155
- Maximum bandwidth allows for more than four connectors in a channel, exceeding all Category 6 channel requirements
- MISSION CRITICAL® 25-year system warranty

### Applications

- 5GBASE-T
- PoE++
- VoIP
- Real time video

### Standards/Verifications

- Supports IEEE 1000BASE-T
- Bit error rate tested ( $\leq 1 \times 10^{-10}$ )
- ANSI/TIA-568 Category 6 component, link and channel compliant
- Third party verified, Intertek Testing Services (ETL)
- Backward compatible Category 5e



Hubbell is a Solution Developer Partner within the Cisco Developer Network Program

\*Field verification by Hubbell approved handheld testers, attenuation measurements are excluded. All projects must be installed and registered by a HPW MCCI (MISSION CRITICAL Certified Installer). Accuracy level of handheld tester + 3dB.

### Jacks, NEXTSPEED® Category 6



The XJ6 jack supports data center 10GbE applications to 55 meters with usable bandwidth exceeding 500 MHz.

Color	Catalog No.	Color	Catalog No.
Black	<b>HXJ6BK</b>	Office White	<b>HXJ6OW</b>
Blue	<b>HXJ6B</b>	Purple	<b>HXJ6P24*</b>
Gold	<b>HXJ6GL24*</b>	Red	<b>HXJ6R</b>
Gray	<b>HXJ6GY</b>	White	<b>HXJ6W</b>
Green	<b>HXJ6GN</b>	Yellow	<b>HXJ6Y</b>

Note: Add **24** to Catalog Number for 24-pack.

\*Gold and Purple available in 24 pack only.

### Patch Cords, NEXTSPEED® Category 6



HC6 patch cords feature verified Category 6 performance and incorporate a patented ISO Termination method. This unique termination process is designed to control Near-End Cross Talk (NEXT), increase performance and reduce Return Loss (RL).

Description	Standard	Low Diameter
Cat 6 patch cord	<b>HC6xxyy</b>	<b>HCL6xxyy</b>

**xx** = Color: **BK** (Black), **B** (Blue), **GN** (Green), **GY** (Gray), **OR** (Orange), **P** (Purple), **R** (Red), **W** (White) and **Y** (Yellow)

**yy** = Length: **01** = 1', **03** = 3', **05** = 5', **07** = 7', **10** = 10', **15** = 15', **20** = 20' and **25** = 25'



### NEXTSPEED® Field Termination Plugs

Category 6 COBRA-LOCK™ MPTL Plugs	<b>SP6</b>
Category 6 MPTL Plug with 90° Cable Exit	<b>SP690</b>

### 6-110 Block Kit

The perfect high-performance consolidation point, the NEXTSPEED® 6-110 punch down blocks provide an ideal 10GbE solution.



Description	Catalog No.
64-pair kit with legs and 16 connecting blocks	<b>6110FTK64WL</b>
64-pair kit w/o legs and 16 connecting blocks	<b>6110FTK64NL</b>
192-pair kit with legs and 64 connecting blocks	<b>6110FTK192WL</b>

Note: 6-110, 4-pair connecting clips

### Patch Panels, NEXTSPEED® Category 6



Patch panels are supplied with labeling for T568 A or B wiring. The 6-port adapter's fully enclosed shell protects the PCB from contaminants and errant terminations, and also allows icons to be installed on each jack port for identification.

Ports	Height	Format	Color	Catalog No.
24	1.75"	Standard	Black	<b>HP624*</b>
48	3.50"	Standard	Black	<b>HP648*</b>
24	1.75"	Angled	Black	<b>HP624A</b>
48	3.50"	Angled	Black	<b>HP648A</b>

\*Add **W** to Catalog Number for White panel.

### UTP Cable, NEXTSPEED® Category 6, 4-pair

NEXTSPEED® Category 6 cable provides considerable margin above all electrical transmission performance requirements specified in TIA 568 and ISO/IEC 11801 (2nd edition) standards.

Description	Plenum Spool	Riser Spool
Cat 6E Enhanced	<b>C6ESPxx</b>	<b>C6ESRxx</b>
	REELEX® Plenum Box	REELEX® Riser Box
Cat 6 UTP	<b>HC6RPxx</b>	<b>HC6RRxx</b>
Cat 6 Link	<b>HC6RPExx</b>	<b>HC6RRExx</b>



**xx** = Color: **B** (Blue), **GY** (Gray), **W** (White) and **Y** (Yellow)

Note: All category rated cable is packaged in 1000 foot quantities.

REELEX® is licensed and patented by Windings Inc.

### 6-110 Patch Cords



Available with 110-to-110 or 110-to-RJ45 connectors, these patch cords provide modularity and quick termination to our 6-110 connecting blocks.

Length	6-110 to 6-110 Catalog No.	6-110 to RJ45 (T568B) Catalog No.
3'	–	<b>6119PCL3</b>
5'	–	<b>6119PCL5</b>
7'	<b>6110PCL7</b>	<b>6119PCL7</b>
9'	–	<b>6119PCL9</b>