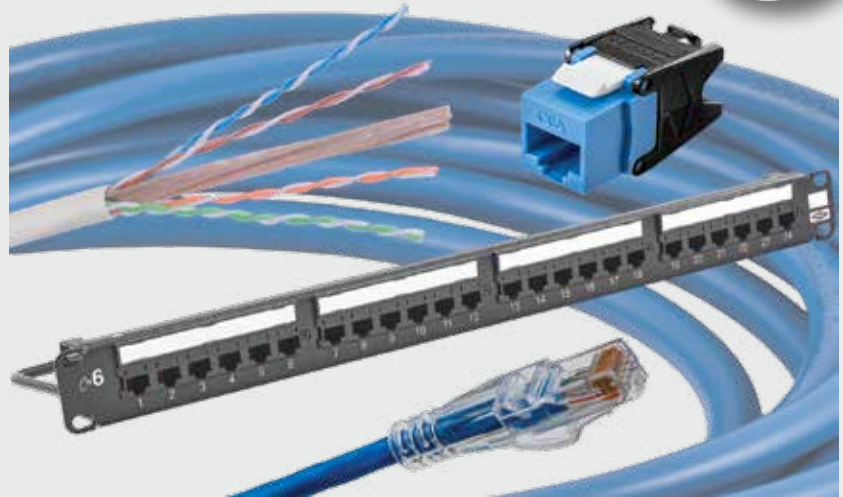


- Third Party Verified Category 6 Component Compliant
- Quick-Lace Termination Geometry Provides Ample Thumb Room
- PoE++ 100W Ready
- Bulk Packaging Reduces Excess Waste on the Job



The NEXTSPEED® Category 6 system with COBRA-LOCK™ termination is designed to deliver headroom beyond 500MHz for dependable Multi-gigabit Ethernet applications. NEXTSPEED's extended bandwidth provides reliability with zero bit error rate performance for today's high speed digital communications.



Features

- Guaranteed installed 4-connector channel PSACR performance 8dB above Category 6 channel requirements on all Category 6 System registered installations*
- Minimum channel capacity of 10 Gbps maximizes dynamic performance for real world applications when qualified per TSB-155
- Maximum bandwidth allows for more than four connectors in a channel, exceeding all Category 6 channel requirements
- MISSION CRITICAL® 25-year system warranty

Applications

- 5GBASE-T
- PoE++
- VoIP
- Real time video

Standards/Verifications

- Supports IEEE 1000BASE-T
- Bit error rate tested ($\leq 1 \times 10^{-10}$)
- ANSI/TIA-568 Category 6 component, link and channel compliant
- Third party verified, Intertek Testing Services (ETL)
- Backward compatible Category 5e



Hubbell is a Solution Developer Partner within the Cisco Developer Network Program

*Field verification by Hubbell approved handheld testers, attenuation measurements are excluded. All projects must be installed and registered by an HPW MISSION CRITICAL Certified Installer. Accuracy level of handheld tester + 3dB.

**Jacks, NEXTSPEED® Ascent Category 6 with
COBRA-LOCK™ Termination**



| Color | Catalog No. | Color | Catalog No. |
|-------|---------------|--------------|---------------|
| Black | HJU6BK | Office White | HJU6OW |
| Blue | HJU6B | Orange | HJU6OR |
| Brown | HJU6BN | Pink | HJU6PK |
| Gray | HJU6GY | Purple | HJU6P |
| Gold | HJU6GL | Red | HJU6R |
| Green | HJU6GN | White | HJU6W |
| Ivory | HJU6EI | Yellow | HJU6Y |

Note: Add **24** to Catalog Number for 24-pack.

Patch Cords, NEXTSPEED® Category 6



HC6 patch cords feature verified Category 6 performance and incorporate a patented ISO Termination method. This unique termination process is designed to control Near-End Cross Talk (NEXT), increase performance and reduce Return Loss (RL).

| Description | Standard | Low Diameter |
|------------------|----------------|-----------------|
| Cat 6 patch cord | HC6xxyy | HCL6xxyy |

xx = Color: **BK** (Black), **B** (Blue), **GN** (Green), **GY** (Gray), **OR** (Orange), **P** (Purple), **R** (Red), **W** (White) and **Y** (Yellow)
yy = Length: **01** = 1', **03** = 3', **05** = 5', **07** = 7', **10** = 10', **15** = 15', **20** = 20' and **25** = 25'

NEXTSPEED® Field Termination Plugs



| | |
|--|--------------|
| Category 6 COBRA-LOCK™ MPTL Plugs | SP6 |
| Category 6 MPTL Plug with 90° Cable Exit | SP690 |

6-110 Block Kit

The perfect high-performance consolidation point, the NEXTSPEED® 6-110 punch down blocks provide an ideal 10GbE solution.



| Description | Catalog No. |
|---|---------------------|
| 64-pair kit with legs and 16 connecting blocks | 6110FTK64WL |
| 64-pair kit w/o legs and 16 connecting blocks | 6110FTK64NL |
| 192-pair kit with legs and 64 connecting blocks | 6110FTK192WL |

Note: 6-110, 4-pair connecting clips

Patch Panels, NEXTSPEED® Category 6



Patch panels are supplied with labeling for T568 A or B wiring. The 6-port adapter's fully enclosed shell protects the PCB from contaminants and errant terminations, and also allows icons to be installed on each jack port for identification.

| Ports | Height | Format | Color | Catalog No. |
|-------|--------|----------|-------|---------------|
| 24 | 1.75" | Standard | Black | HP624* |
| 48 | 3.50" | Standard | Black | HP648* |
| 24 | 1.75" | Angled | Black | HP624A |
| 48 | 3.50" | Angled | Black | HP648A |

*Add **W** to Catalog Number for White panel.

UTP Cable, NEXTSPEED® Category 6, 4-pair

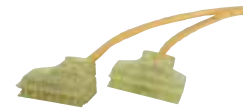
NEXTSPEED® Category 6 cable provides considerable margin above all electrical transmission performance requirements specified in TIA 568 and ISO/IEC 11801 (2nd edition) standards.

| Description | Plenum Spool | Riser Spool |
|-----------------|-----------------------|----------------------|
| Cat 6E Enhanced | C6ESPxx | C6ESRxx |
| | REELEX® Plenum Box | REELEX® Riser Box |
| Cat 6 UTP | HC6RPxx | HC6RRxx |
| Cat 6 Link | HC6RPExx | HC6RRExx |



xx = Color: **B** (Blue), **GY** (Gray), **W** (White) and **Y** (Yellow)
 Note: All category rated cable is packaged in 1000 foot quantities.
 REELEX® is licensed and patented by Windings Inc.

6-110 Patch Cords



Available with 110-to-110 or 110-to-RJ45 connectors, these patch cords provide modularity and quick termination to our 6-110 connecting blocks.

| Length | 6-110 to 6-110 Catalog No. | 6-110 to RJ45 (T568B) Catalog No. |
|--------|-------------------------------|--------------------------------------|
| 3' | – | 6119PCL3 |
| 5' | – | 6119PCL5 |
| 7' | 6110PCL7 | 6119PCL7 |
| 9' | – | 6119PCL9 |