



HUBBELL NEXTSPEED Ascent 10GbE Cable

10GbE Application Assurance

Maximum Bandwidth Beyond 750MHz

Component Compliant ANEXT
Performance

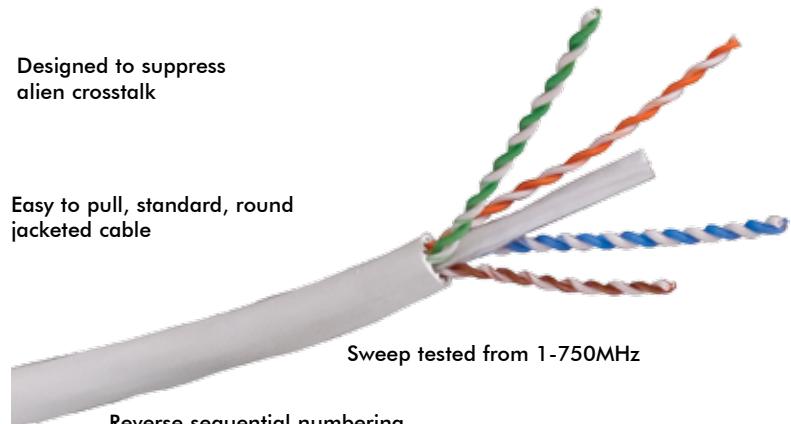
PoE and PoE+ Ready

Designed to suppress
alien crosstalk

Easy to pull, standard, round
jacketed cable

Sweep tested from 1-750MHz

Reverse sequential numbering



SPECIFICATIONS

- ◆ **Conductor:** 23AWG solid bare copper
- ◆ **Insulation:** CMP: FEP, CMR: Polyolefin
- ◆ **Pairing**
 - 1: Blue + White/Blue
 - 2: Orange + White/Orange
 - 3: Green + White/Green
 - 4: Brown + White/Brown
- ◆ **Cabling:** Four unshielded twisted pairs cabled around a star filler member
- ◆ **Jacket (Dual)**
 - CMP: Low-smoke PVC
 - CMR: PVC

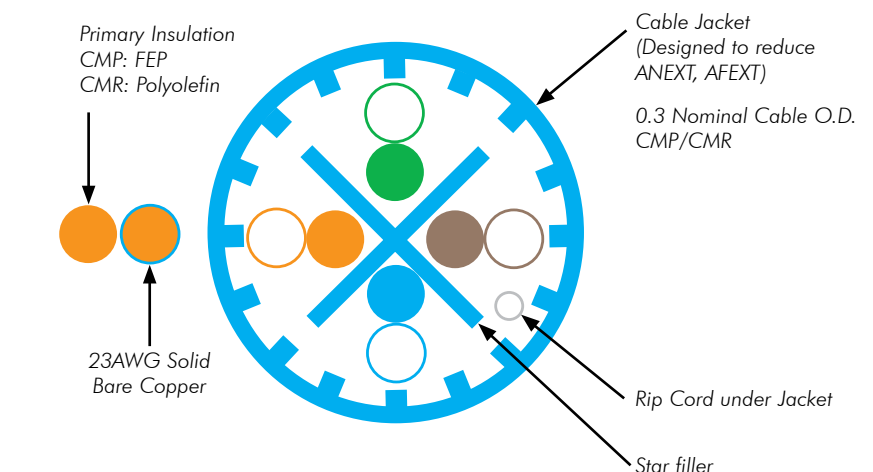
STANDARDS/VERIFICATIONS

- TIA-568-C.2 (Category 6A component)
- IEEE 802.3af (PoE), IEEE 802.3at (PoE+) and IEEE 802.3bt (4 PPPoE)
- Exceeds IEEE 802.3an 10GBASE-T link segment requirements
- NEC Article 800 compliant

APPLICATIONS

- ▲ Data centers 10GbE between devices:
 - Server to server
 - Server to storage
 - Server to switch
- ▲ High-performance cable applications
 - Distributed backbone
 - Floor to floor backbone
 - 10GbE cabling to desktop
 - Active zone cabling
- ▲ PoE Applications
 - Wireless access points (IEEE 802.11ac)
 - Voice over Internet Protocol (VoIP)
 - Security appliances
- ▲ Bandwidth intense processing:
 - Video on Demand (VoD)
 - Real-time security surveillance
 - High-resolution 3D modeling
 - Online document publishing
 - Broadband video

CABLE FEATURES



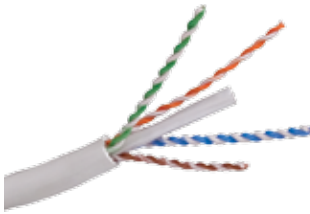
NEXTSPEED® Ascent 10GbE is a tuned system of structured cabling components designed and center balanced to work together. **NEXTSPEED®** Ascent 10GbE delivers headroom beyond 750MHz.

NEXTSPEED® Ascent 10GbE cable features innovative ANEXT reduction techniques in internal jacket construction and individual pair separation. Sweep testing from 1 to 750MHz ensures the highest performance guarantee.

NEXTSPEED® Ascent 10GbE cable is engineered to exceed all Category 6A electrical component requirements as specified in the TIA-568-C.2 (Category 6A component) standard.

ORDERING INFORMATION

NEXTSPEED® Ascent 10GbE, 4-Pair, UTP Cable



Color	Riser Spool Catalog No.	Plenum Spool Catalog No.
Blue	C6ASRB	C6ASPB
Gray	C6ASRGY	C6ASPGY
White	C6ASRW	C6ASPW
Yellow	C6ASRY	C6ASPY

RELATED PRODUCTS

NEXTSPEED® Ascent 10GbE Jacks

Catalog No. **HJ6Axx**

xx = Color:

- BK** (Black), **B** (Blue),
- GY** (Gray), **GN** (Green),
- OW** (Office White),
- OR** (Orange), **R** (Red),
- W** (White)



NEXTSPEED® Ascent 10GbE Patch Panels

Ports	Format	Color*	Catalog No.
24	Standard	Black	HP6A24*
48	Standard	Black	HP6A48*
24	Angled	Black	HP6A24A
48	Angled	Black	HP6A48A

*Add **W** to Catalog Number for White. Standard format only.



NEXTSPEED® Ascent 10GbE Patch Cords

Catalog No. **HC6Axxyy**

xx = Color: **BK** (Black), **B** (Blue), **GY** (Gray), **GN** (Green), **OR** (Orange), **P** (Purple), **R** (Red), **W** (White), **Y** (Yellow)

yy = Standard Length: **01** (1'), **03** (3'), **05** (5'), **07** (7'), **10** (10'), **15** (15'), **20** (20')



See Full Line Catalog for product options: color, size, length.

TRANSMISSION SPECIFICATIONS, Worst Case 100 meter Channel Configuration

TIA-568-B.2-10 Category 6A Compliant
ISO/IEC 11801, 2nd Ed. Category 6A Compliant

Freq. (MHz)	Insertion Loss (dB/100m)	NEXT Loss Min. (dB/100m)	PSNEXT Loss Min. (dB/100m)	ELFEXT Min. (dB/100m)	PSELFEXT Min. (dB/100m)	Return Loss Min. (dB/100m)	Delay Max. (ns/100m)
0.772	-	84.0	82.0	78.0	75.0	-	-
1.0	2.0	82.3	80.3	75.8	72.8	20.0	570
4.0	3.7	73.3	71.3	63.8	60.8	23.0	552
8.0	5.2	68.8	66.8	57.7	54.7	24.5	547
10.0	5.8	67.3	65.3	55.8	52.8	25.0	545
16.0	7.3	64.2	62.2	51.7	48.7	25.0	543
20.0	8.2	62.8	60.8	49.8	46.8	25.0	542
25.0	9.2	61.3	59.3	47.8	44.8	24.3	541
31.25	10.4	59.9	57.9	45.9	42.9	23.6	540
62.5	14.9	55.4	53.4	39.9	36.9	21.5	539
100.0	19.2	52.3	50.3	35.8	32.8	20.1	538
200.0	28.1	47.8	45.8	29.8	26.8	18.0	537
300.0	35.3	45.1	43.1	26.3	23.3	16.8	536
400.0	41.7	43.3	41.3	23.8	20.8	15.9	536
500.0	47.5	41.8	39.8	21.8	18.8	15.2	536



Hubbell Premise Wiring

HUBBELL INCORPORATED (Delaware)
23 Clara Drive, Suite 103 • Mystic, CT 06355 • (860) 535-8326 • 800-626-0005
Fax: (860) 535-8328 • www.hubbell-premise.com

Worldwide Locations

Hubbell Premise Wiring, Asia Pacific
Hubbell Canada Inc.
Hubbell Premise Wiring, Central America
Hubbell Premise Wiring, China
Hubbell Premise Wiring, Colombia
Hubbell Premise Wiring, Europe
Hubbell Int'l Inc., Korea Branch

852-2836-7131 Fax: 852-2836-7132
905-839-1138 Fax: 905-839-9108
506-309-4158 Fax: 506-260-1616
8621-6309-0119 Fax: 8621-6309-0122
571-245-8940 Fax: 571-340-0925
44-01283 500500 Fax: 44-01283 500400
82-2-(0)2607-1363 Fax: 82-2-(0)2603-7386

Hubbell Premise Wiring, Latin America
Hubbell de Mexico, S.A. de C.V.
Hubbell Premise Wiring, Middle East
Hubbell-Taian Co., Ltd., Taiwan
Hubbell Premise Wiring, Turkey
Hubbell Premise Wiring, Venezuela

305-408-4501 Fax: 305-408-8201
(5255) 9151-9999 Fax: (5255) 9151-9989
971-4-393-4192 Fax: 971-4-393-4194
886-2-2522-1862 Fax: 886-2-2522-1872
90-216-313-5016 Fax: 90-216-414-8148
58-416-680-7453 Fax: 58-281-274-7900