

# SUPPORTING RENEWABLE ENERGY

## FROM THE GROUND UP



Unlike concrete, CHANCE® helical foundations can be installed throughout the year and in any weather condition. There is no waiting for concrete to cure, no excavation and no spoils removal. CHANCE helical foundations are ideal for areas inaccessible by conventional construction. They install in almost any type of terrain, including steep inclines, flood plains, glacial till, swamps and bogs.

### SAVE TIME & MONEY

- Fast installation
- Immediate loading

### SOLVE DIFFICULT SITE PROBLEMS

- Access limitations
- Poor soil conditions
- Frost heave
- No soil removal or grading required

### GREEN ALTERNATIVE TO CONCRETE

- No water required for helical foundations
- Made with recycled materials
- Easily removed - sustainable reusable
- Low environmental impact installation
- Efficient installation reduces carbon footprint

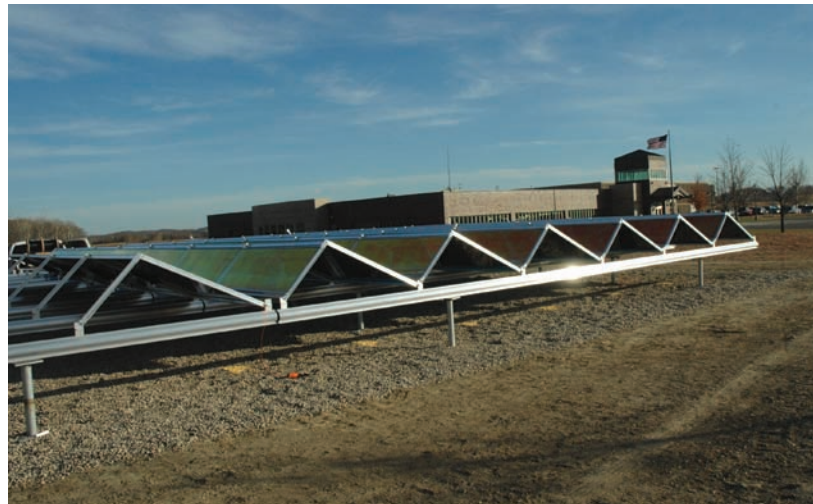
SF\_04\_046\_E

# SUPPORTING RENEWABLE ENERGY

## FROM THE GROUND UP



Utilizing owned equipment



Contractor budgeted 7 days with 2 men for pier installation. Installed in 2 days.



Ready to generate

*All pictures taken at Lake Region Electric Co-op during the first install. The entire installation was done by co-op employees.*