

COMBINATION (SS-RS) HELICAL CAST TRANSITION

ADAPT TYPE SS LEADS TO TYPE RS EXTENSIONS

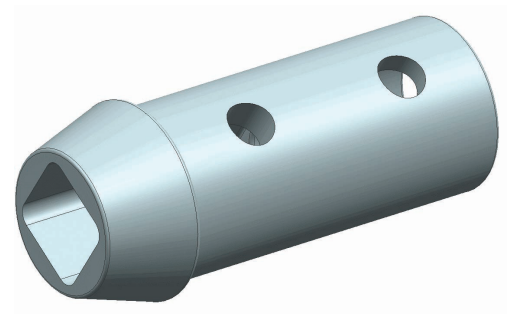
The transition section adapts type Square Shaft (SS) helical lead sections to type Round Shaft (RS) extensions. The type RS-SS combination transition is used mainly in compression applications in areas where soft/loose soils are located above hard/dense soils. The type RS material is less susceptible to buckling, provides greater lateral capacity, and greater moment capacity, than type SS material.

A square shaft lead will allow better penetration of the helices into hard/dense material than round shaft (RS). SS reduces the occurrence of “spin-out” (loss of thrust of helices).

KEY BENEFITS

- Tapered design allows for smoother transition
- Reduced installing time (no tool change)
- Transition matches torque and compression capacity of respective shafts
- Standard hardware with SS extensions
- Faster lead time and availability of SS
- Meet project specifications with RS & SS
- Spin-Out prevention
- Inventory turnover by using existing SS Leads
- Major cost savings over old SS to RS Transition

The design should be prepared by a Registered Professional.



CATALOG NO.	DESCRIPTION	TORQUE RATINGS
C1500896	SS5/SS150 square shaft to a RS2875.276 & RS2875.203 diameter round shaft	7,000 ft-lb
C1500895	SS175 square shaft to a RS3500.300 diameter round shaft	11,000 ft-lb
C1500937	SS200 square shaft to a RS3500.300 diameter round shaft	13,000 ft-lb



CHANCE Civil Construction | Hubbell Power Systems, Inc. | chancefoundationsolutions.com

©Copyright 2016 Hubbell Incorporated. Because Hubbell has a policy of continuous product improvement, we reserve the right to change design and specifications without notice.

