

# SET SCREW BAR TRANSFORMER CONNECTORS TOGGLE LATCH

## FOR CONNECTING SECONDARY UNDERGROUND APPLICATIONS TO TRANSFORMER STUDS.

### MATERIAL

Body — Aluminum Alloy

Swing Bolt Hardware — High Strength Steel

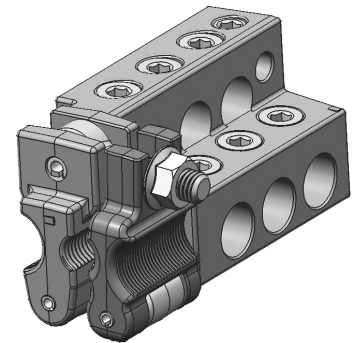
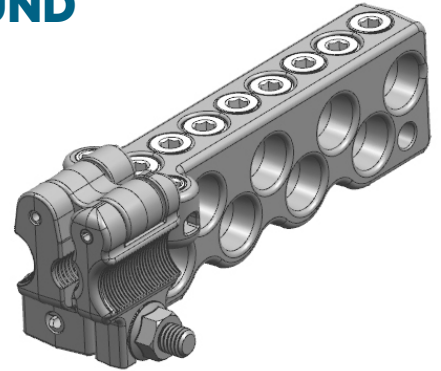
Set Screws — Aluminum Alloy

Boot/Cover — Poly-vinyl chloride (PVC)

### BENEFITS

- Innovative “Toggle Latch” mechanism provides unmatched ease of installation, along with superior electrical performance
- Patented design can accept both 5/8”-11 and 1”-14 threads allowing for reduced inventory
- Die cast threads of the toggle latch create a superior connection to the transformer stud by contacting the entire circumference area of the stud
- Oxide Inhibiting Compound provided as standard in stud and tap holes
- 5/16” allen set screws provide constant pressure on conductors
- Testing meets or exceeds ANSI C119.6 Class “A” tests
- Toggle Nut is 3/4” across flats, fits standard GP223 speed wrench
- UTSB8500L has redundant ground ports provided for use on neutral phase connections

**Note:** Not suitable for submersible installations



CATALOG NUMBER	TRANSFORMER STUD SIZES	CONDUCTOR RANGE			MAIN PORTS	STREET LIGHT PORTS	GROUND PORTS	KIT CATALOG NUMBER	COVER ONLY CATALOG NUMBER
		MAIN PORTS	STREET LIGHT PORT	REDUNDANT GROUND					
UTSB8500L	5/8”-11 & 1”-14”	#6 SOL - 500 MCM	#12 SOL - 1/0 SOL	#12 SOL - #2 SOL	8	1	2	UTSB8500CL	CTL8500
		0.162” - 0.813”	0.081” - 0.325”	0.081” - 0.258”					
UTZB6500L	5/8”-11 & 1”-14”	#6 SOL - 500 MCM	#12 SOL - 1/0 SOL	N/A	6	1	—	UTZB6500CL	CZTL6500
		0.162” - 0.813”	0.081” - 0.325”	N/A					

Hubbell has a policy of continuous product improvement. Please visit [hubbellpowersystems.com](http://hubbellpowersystems.com) to confirm current design specifications.

SF\_05\_082\_E