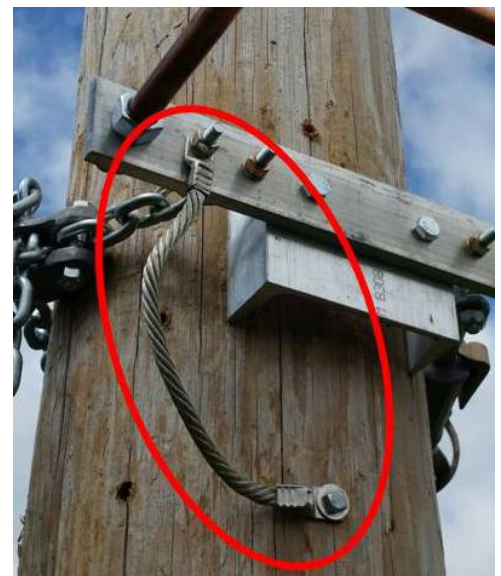


CHANCE[®] 5H AND 6H RATED CLUSTER BARS

NOW TESTED PER ASTM F855-15 TO GRADES 5H AND 6H

CHANCE Cluster Bars have been used for nearly 50 years! In keeping up with industry needs, CHANCE Cluster Bars are now available with 5H and 6H ratings.



Cluster Bar with penetrating feature

CHANCE 5H and 6H Rated Cluster Bars are also available with an integral pole-penetrating option. See OSHA 1910.269 Appendix C for more information on protecting workers from hazardous differences in electrical potential and penetration of the pole.

CATALOG NUMBER	DESCRIPTION	ASTM F855-15 RATING	RATED CURRENT (15 CYCLES)	FIRST CYCLE TEST CURRENT PEAK	WEIGHT
PSC6003628	5H Rated Cluster Bar, 5/8" dia. x 11"	5H	47 kA	127 kA	10.7 lbs. (4.9 kg)
PSC6003628A	5H Rated Penetrating Cluster Bar, 5/8" dia.	5H	47 kA	127 kA	10.8 lbs. (4.9 kg)
PST6003466	6H Rated Cluster Bar, 1" dia. x 11"	6H	55 kA	148 kA	12.0 lbs. (5.4 kg)
PST6003466A	6H Rated Penetrating Cluster Bar, 1" dia.	6H	55 kA	148 kA	12.1 lbs. (5.5 kg)



CHANCE Lineman Grade Tools | Hubbell Power Systems, Inc. | hubbellpowersystems.com

©Copyright 2017 Hubbell Incorporated. Because Hubbell has a policy of continuous product improvement, we reserve the right to change design and specifications without notice.

