

TRENCH DRAINS

Rapid Installation, Durable, and Lightweight

POLYCAST[®]



THE 20% ADVANTAGE

48" vs. Meter Channel Lengths

- Fewer Channels
- Fewer Joints
- Faster Installation
- Fewer Problems

Load Ratings

POLYCAST grates are designed to meet load ratings as defined by DIN/EN 1433. This well recognized, international standard classifies potential drainage applications into 6 classes. These classes take into account both proof loading and catastrophic loads to ensure the user's product is selected correctly and is reliable.

LOAD RATINGS

- A
- B
- C
- D
- E
- F

- DIN Class A - 3,372 lbs - 15 kN**
Residential, pedestrian, and cyclist traffic
Polycast - 400, 500 & 600 Series
- DIN Class B - 28,100 lbs - 125 kN**
Sidewalks, parking lots, and car parking decks
Polycast - 500, 600 & 800 Series
- DIN Class C - 56,200 lbs - 250 kN**
Curb sides, highway shoulders, and parking areas
Polycast - 500, 600, 700 & 800 Series
- DIN Class D - 89,920 lbs - 400 kN**
Trafficked sections of roads and highways
Polycast - 500, 600, 700 & 900 Series
- DIN Class E - 134,800 lbs - 600 kN**
Industrial areas, forklifts traffic, ports, and dock sides
Polycast - 500, 600, 700 & 800 Series
- DIN Class F - 202,320 lbs - 900 kN**
Aircraft runways, docks, and high impact wheel loads
Polycast - 500, 600 & 700 Series

Polycast Drain Designer

Answer a few questions, and in just seconds, Drain Designer will produce a detailed drawing, specification, and bill of material/sales quote for your project.



Scan the QR code above or visit <http://www.hpsapps.com/draindesigner> to enter your project details today.

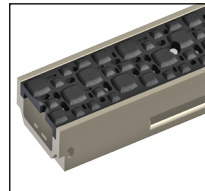


400 SERIES (NON-SLOPED RESIDENTIAL)



The 400 Series is a complete surface drainage system with a polymer concrete channel and galvanized steel grate. The durable pedestrian traffic grate is also bicycle and wheel chair resistant.
DIN Class A

500 SERIES (NON-SLOPED DECK DRAIN)



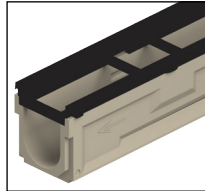
The 500 Series Deck Drain is the ideal solution for a wide variety of applications with incidental water run-off. The low profile design is ideally suited for installation in suspended slab applications, such as parking structures, pool decks, and other locations with depth restrictions.
DIN Class A - D with Frame E-F

600 SERIES (SLOPED-COMMERICAL/INDUSTRIAL)



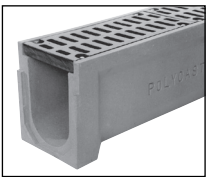
The versatile design of the 600 Series allows for flow rates equal to or greater than most larger poured-in-place trench drains (470 GPM per outlet attainable with proper components). It is ideally suited for a variety of commercial and industrial applications. Optional Vinyl Ester channels are available for use in harsh chemical or high temperature applications.
DIN Class A - D

700 SERIES (SLOPED-MODERATE-HIGH TRAFFIC)



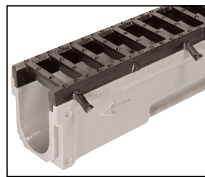
The 700 Series incorporates DURAGUARD® or HARDNOSE frames with either the 500 or 600 Series channel and components. This innovative design improves heavy load impact performance to withstand the most harsh vehicle applications including heavy aircraft traffic, hard wheel forklifts, as well as industrial and construction equipment.
DIN Class A - F

800 SERIES (NON-SLOPED HIGH VOLUME DRAIN)



The 800 Series Channel is a non-sloped system for high volume situations that exceed the capacity of Polycast 600 series. This channel is designed for areas of high volume, cross-flow interception, or areas where the large cross section is necessary.
DIN Class B - E

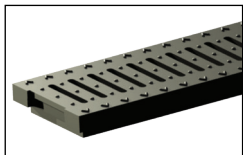
900 SERIES (SLOPED-FULL TRAFFIC HIGHWAY/AIRPORT)



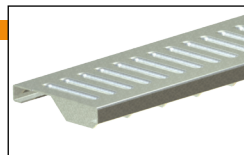
The 900 Series drainage system is designed specifically for highway and airport use to collect run-off before it travels onto road or airplane taxi surfaces where water and ice can cause hazardous conditions. With the use of 600 Series channel, a specially designed grate utilizes integral cast lugs to permanently secure the grate to prevent pullout from high-speed traffic.
DIN Class D

GRATES

Polycast offers a wide range of grating designs and materials to meet virtually any need (more gratings available than pictured here). For a secure fit, Polycast grates are held tight to the drain by special hold-down bars, which lock into insert slots cast into the channel walls or frames.

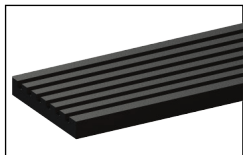


Slotted Grate

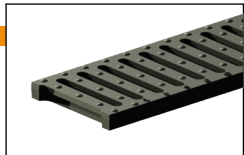


Galvanized or Stainless Steel

Polycast Ductile Iron and Steel Grates are designed for pneumatic tire vehicles at low to moderate speed.

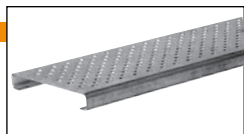


Longitudinal Slotted



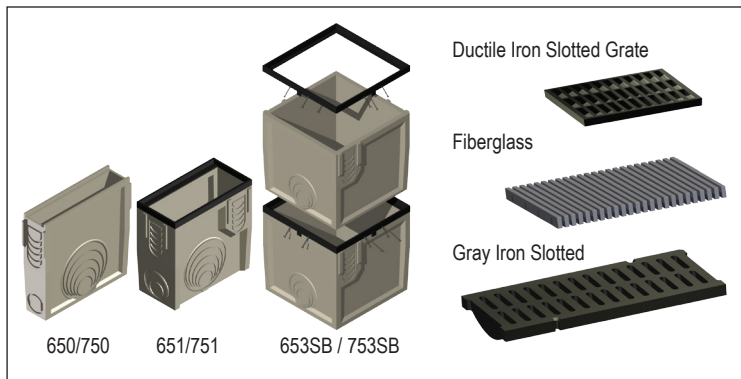
Ductile Iron

Perforated grates are available in galvanized or stainless steel. Designed for use in pedestrian areas to minimize heel hazards and prevent entry of large objects.



Perforated

ACCESSORIES



Ductile Iron Slotted Grate

Fiberglass

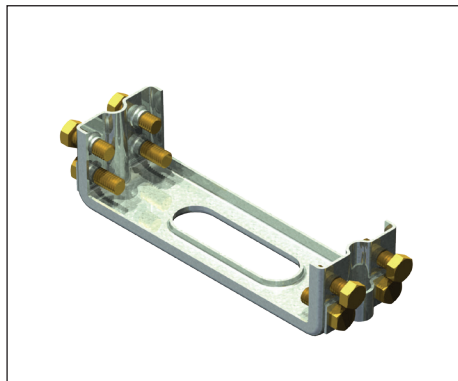
Gray Iron Slotted

650/750

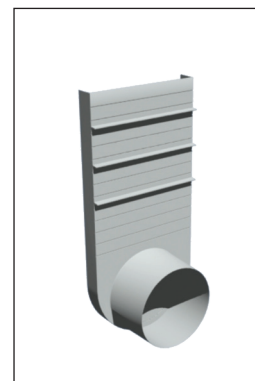
651/751

653SB / 753SB

Catch Basins & Catch Basin Grates



Installation Alignment Chair



End Caps



POLYCAST

Hubbell Enclosures & Drains
Hubbell Lenoir City, Inc
3621 Industrial Park Drive • Lenoir City, Tennessee 37771
Phone: 800.346.3062 or 865.986.9726 • Fax: 865.986.0585
hubbellenlosures@hubbell.com
www.polycastdrain.com

PC-2

