

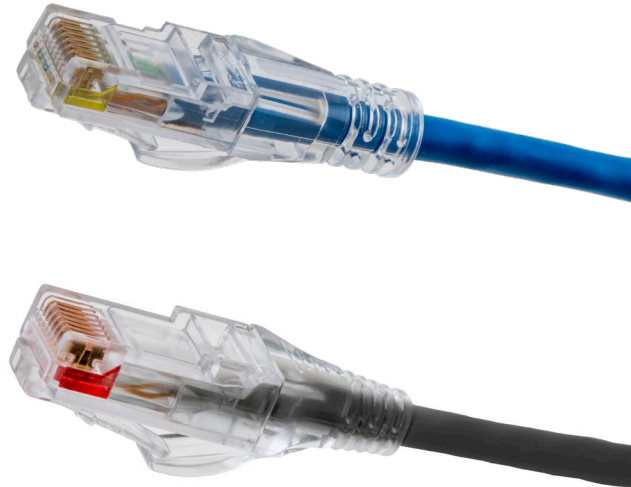
NEXTSPEED® Low Diameter Patch Cords

Category 6 and 6A

HCL series low diameter patch cords from Hubbell reduce cable congestion associated with high density installation in data centers, wall mount enclosures, and Category 6A panels. These cords greatly improve airflow, cooling, and cord management.

HCL cords are designed to exceed TIA component limits for NEXT and Return Loss. They utilize #28AWG stranded conductors that are extremely flexible and easy to manage. This gauge is below current TIA-568 specifications and, as a result, these cords have an increased de-rating factors and limitations on PoE applications. See Application Notes below to properly utilize.

Lower your switch operating temperatures and simplify your cable management with HCL series cords from Hubbell.



FEATURES

- Over 50% cross sectional area reduction on 6A provides improved air flow
- High flexibility: stranded conductors with soft, flexible cable jacket provide easy cable management
- Plug optimized: allows for easy access to high density switch ports
- ETL Verified for TIA Component NEXT and Return Loss
- Designed to exceed TIA component NEXT and Return Loss values
- S-shield provides superior ANEXT control on 6A version
- Improved bend radius: 63% improvement on C6A and 40% on C6
- Reduced airflow resistance and improved cooling
- Over 30% reduction in weight puts less stress on cable support infrastructure
- Soft flexible cable for easy cable management
- Backwards compatible to lower categories

APPLICATION NOTES

- De-rating factor:
 - Cat 6A: 1.95
 - Cat 6: 1.87
- Maximum bundle:
 - 802.3bt = 24 cables
 - 802.3at = 48 cables



NEXTSPEED® Low Diameter Patch Cords

HUBBELL®
Premise Wiring



NEXTSPEED® Low Diameter Patch Cords

| Description | Catalog No. |
|---|-----------------------------|
| Ascent Category 6A O.D. = 0.186" NOM | HCL6A_{xx}yy |
| Category 6 O.D. = 0.150" NOM | HCL6_{xx}yy |

xx = Color: **BK** (Black), **B** (Blue), **GY** (Gray), **GN** (Green),
OR (Orange), **P** (Purple), **R** (Red), **W** (White) and **Y** (Yellow)
yy = Length of **01, 03, 05, 07, 10, 15, 20, 25** and **30** feet



NEXTSPEED® Ascent Jacks

| Unit of Measure | Category 6A Catalog No. | Category 6 Catalog No. |
|-----------------|-----------------------------|----------------------------|
| Single pack | HJU6A_{xx} | HXJ6_{xx} |
| 25-pack | HJU6A_{xx}25 | HXJ6_{xx}24 |

xx = Color: **BK** (Black), **B** (Blue), **EI** (Electric Ivory), **GL** (Gold),
GY (Gray), **GN** (Green), **OW** (Office White), **OR** (Orange),
P (Purple), **R** (Red), **W** (White) and **Y** (Yellow)

Note: Gold and Purple available in 25-pack only.

Category 6A Patch Panel Kits 19"

| Format | Color | 24-Port, 1RU | 48-Port, 2RU |
|----------|-------|-----------------|-----------------|
| Standard | Black | HPJ6A24 | HPJ6A48 |
| Angled | Black | HPJ6A24A | HPJ6A48A |

*Angled panels protrude 4.46" from the plane of the rack. One extra inch of space is recommended between the door and panel angle.

Category 6 Patch Panels, 19"

| Format | Color | 24-Port, 1RU | 48-Port, 2RU | 96-Port, 4RU |
|----------|-------|-----------------|-----------------|-----------------|
| Standard | Black | HP624 | HP648 | HP696 |
| Standard | White | HP624W | HP648W | HP696W |
| Angled | Black | HP624A* | HP648A* | - |

*Angled panels protrude 4.46" from the plane of the rack. One extra inch of space is recommended between the door and panel angle.

Jack Patch Panels, Unloaded, 19"

| Format | 24-Port, 1RU | 48-Port, 2RU | 72-Port, 3RU | High-Density, 48-Port, 1RU |
|----------|-----------------|-----------------|-----------------|-------------------------------|
| Standard | HPJ24 | HPJ48 | HPJ72 | UDX48E1U |
| Angled | HPJ24A | HPJ48A | - | UDX48A1U |

HCL6A Series Patch Cord vs. Total Channel Length

| Max. Patch Cord Length* (28 AWG) | | Horizontal Length (23 AWG) | | Max. Channel Length | |
|-------------------------------------|------|-------------------------------|------|------------------------|------|
| Meters | Feet | Meters | Feet | Meters | Feet |
| 6 | 21 | 90 | 295 | 96 | 316 |
| 7 | 24 | 88.5 | 290 | 96 | 314 |
| 8 | 27 | 86.5 | 283 | 95 | 310 |
| 9 | 31 | 84.5 | 277 | 94 | 308 |
| 10 | 33 | 83 | 272 | 93 | 305 |
| 11 | 37 | 81 | 265 | 92 | 302 |
| 12 | 40 | 79 | 259 | 91 | 299 |
| 13 | 44 | 77 | 252 | 90 | 296 |
| 14 | 47 | 75 | 246 | 89 | 293 |
| 15 | 49 | 73.5 | 241 | 89 | 290 |

*Note: TIA channel allows 33ft max total patch cord length.

HUBBELL®
Premise Wiring

hubbell-premise.com

