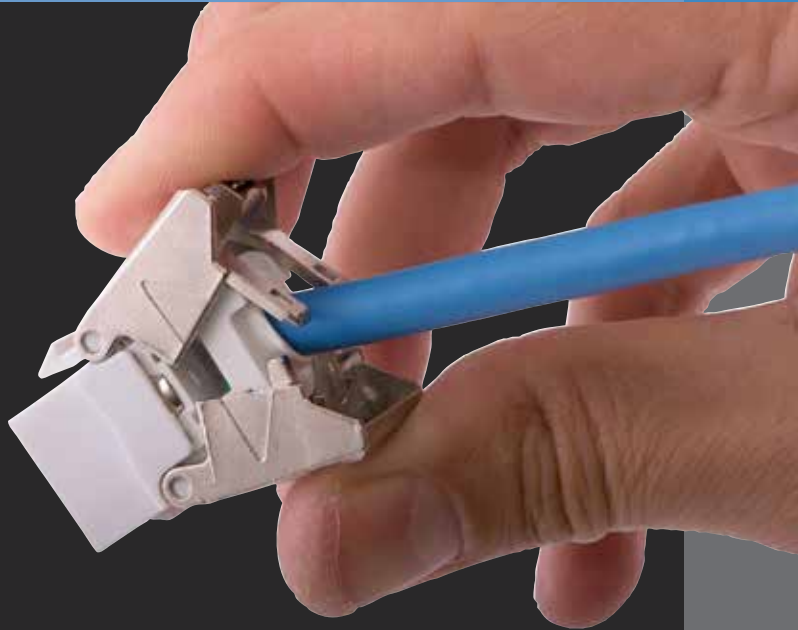


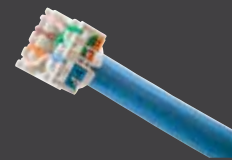
# Ascent Category 6A UTP System with *COBRA-LOCK*<sup>™</sup> Termination Technology



## *COBRA-LOCK*<sup>™</sup> TERMINATION IS

- **FAST:** All four pairs terminated at once by hand
- **RELIABLE:** Designed to support Cat6A, termination is held in constant compression
- **EFFICIENT:** Terminate more jacks per hour

## Termination Process



### STEP 1:

**Lace wires into wire manager, then trim flush**

Wire manager securely retains wires for either A or B wiring and is keyed to ensure correct polarity to jack body.



### STEP 2:

**Insert wire manager and engage COBRA-LOCK**

Jack body terminates all wires at once and actively retains termination integrity.



### STEP 3:

**Easily Re-Terminate**

Release COBRA-LOCK<sup>™</sup> with a small screwdriver; wire manager can be reused up to 25 times.

## Category 6A Jack Specifications



- Exceeds TIA 568.2-D component requirements
- Short links (less than 10M) supported
- Designed and tested for 1.5A of continuous current per pair

## Category 6A Jack Standards

- TIA-568-C.2 Category 6A component
- IEC 60603-7-41 Category 6A component
- Qualified to 150% of IEEE 802.3bt current level
- IEC60512-99-002 for de-matting endurance under PoE load
- IEEE 802.3an 10GBASE-T
- UL Plenum rated



## NEXTSPEED® Ascent Category 6A Jacks with COBRA-LOCK™ Termination

| Color | Single Pack    |
|-------|----------------|
| Black | <b>HJU6ABK</b> |
| Blue  | <b>HJU6AB</b>  |
| Gray  | <b>HJU6AGY</b> |
| White | <b>HJU6AW</b>  |

Add 24 to Catalog Number for 24-pack

Additional colors: **B** (Brown), **GL** (Gold), **GN** (Green), **EI** (Ivory), **OW** (Office White), **OR** (Orange), **PK** (Pink), **P** (Purple), **R** (Red), **Y** (Yellow)



## NEXTSPEED® COBRA-LOCK™ Field Termination Plug

Category 6A **SP6A**

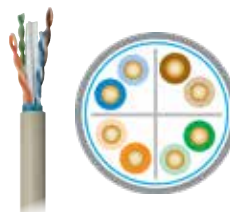


## NEXTSPEED® Ascent Category 6A Panel Kits

19-inch, Black, COBRA-LOCK jacks included

| Format   | 24-Port         | 48-Port         |
|----------|-----------------|-----------------|
| Standard | <b>HPJ6A24</b>  | <b>HPJ6A48</b>  |
| Angled   | <b>HPJ6A24A</b> | <b>HPJ6A48A</b> |

## Complete the Channel with Hubbell Cable and Cords



### Specifications

- Jacket: (Plenum) 0.267 O.D.; (Riser) 0.275 O.D.
- Conductor: 23 AWG solid bare copper
- Sweep tested to 750MHz

## NEXTSPEED® Ascent Category 6A Reduced Diameter Cable

1000 feet, NVP: Plenum 71%, Riser 66%

| Color  | Plenum<br>Reel in a Box | Riser<br>Reel in a Box |
|--------|-------------------------|------------------------|
| Blue   | <b>C6ASPDSB</b>         | <b>C6ASRDSB</b>        |
| Gray   | <b>C6ASPDSGY</b>        | <b>C6ASRDSGY</b>       |
| White  | <b>C6ASPDSW</b>         | <b>C6ASRDSW</b>        |
| Yellow | <b>C6ASPDSY</b>         | <b>C6ASRDSY</b>        |

Visit our website for cable requirements, additional colors and spool option.



## NEXTSPEED® Ascent Category 6A Patch Cords

| Color  | Catalog No.     |
|--------|-----------------|
| Black  | <b>HC6ABKyy</b> |
| Blue   | <b>HC6AByy</b>  |
| Gray   | <b>HC6AGYyy</b> |
| White  | <b>HC6AWyy</b>  |
| Yellow | <b>HC6AYyy</b>  |

**yy** = Standard Length: **01** (1'), **03** (3'), **05** (5'), **07** (7'), **10** (10'),

**15** (15'), **20** (20'); made-to-order lengths available up to 100ft

Additional colors: **GN** (Green), **OR** (Orange), **PK** (Pink), **P** (Purple), **R** (Red)



## NEXTSPEED® Ascent 6A Low Diameter Patch Cords

| Color  | Catalog No.      |
|--------|------------------|
| Black  | <b>HCL6ABKyy</b> |
| Blue   | <b>HCL6AByy</b>  |
| Gray   | <b>HCL6AGYyy</b> |
| White  | <b>HCL6AWyy</b>  |
| Yellow | <b>HCL6AYyy</b>  |

**yy** = Standard Length: **01** (1'), **03** (3'), **05** (5'), **07** (7'), **10** (10'),

**15** (15'), **20** (20'); made-to-order lengths available up to 100ft

Additional colors: **GN** (Green), **OR** (Orange), **PK** (Pink), **P** (Purple), **R** (Red)