



Hubbell-PRO Pin and Sleeve Devices

Hubbell-PRO Pin and Sleeve Devices

Hubbell-PRO IEC Pin and Sleeve

- 20, 30, 60 and 100A - UL and cULus for use in North America
- 16, 32, 63 and 125A - VDE listed for use Internationally
- Dual rated devices - UL, cULus and VDE listed



Why Hubbell-PRO

- Value engineered to balance price and performance
- Significantly reduces installation time reducing cost
- Accepts full range of UL and VDE approved cables
- Withstands demanding applications
- Complete offering of IP44 and IP67 devices
- Dual rated versions available where applicable



Ideal for:

- OEMs
- Data Center
- Entertainment
- Transportation
- Commercial Applications

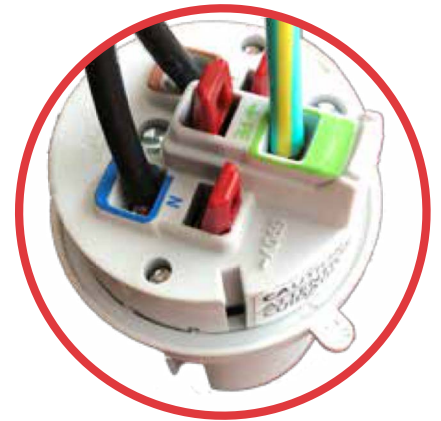
What's New for Hubbell-PRO Pin and Sleeve

- Multiple new Installation efficiencies
- Complete offering of both IP44 and IP67 device
- Dual rated devices for use in North America and Internationally
- Screwless two piece housing for 60A and 100A devices

Improve installation time by over 80%

Edge Series – Only UL approved screwless terminations in the world for 30/32A IEC 60309 pin and sleeve

- Strong spring continuously applies pressure as strands relax
- Eliminates timely step of ferrules
- No Torque screwdriver required



External Strain Relief – Easy to secure and can be inspected without opening the housing

More Time Saving Features

Glandless Water Ingress Protection – Integral and permanently attached to the device



* Sold in Bulk Packs – Environmental and productivity friendly bulk packs.

*16/20 & 30/32 sold in packs of 10; 60/63A and 100/125A sold in packs of 5.

Hubbell-PRO Pin and Sleeve Devices

Watertight Series North American Ratings



Amps	Dual Rated:	Ratings	Watertight IP67 Suitability				
			Inlet	Connector	Plug	Receptacle	Angled Receptacle
16 & 20		2P/3W, 20A 125V AC	C320B4WA	C320C4WA	C320P4WA	C320R4WA	C320AR4WA
	Dual Rated:	2P/3W, 20A 250V AC/16A 220-240V	C320B6WA	C320C6WA	C320P6WA	C320R6WA	C320AR6WA
		2P/3W, 20A 480V AC	C320B7WA	C320C7WA	C320P7WA	C320R7WA	C320AR7WA
		3P/4W, 20A 3P 600V	C420B5WA	C420C5WA	C420P5WA	C420R5WA	C420AR5WA
	Dual Rated:	2P/3W, 20A 250V AC/16A 220-240V	C420B6WA	C420C6WA	C420P6WA	C420R6WA	C420AR6WA
		3P/4W, 20A 3P 480V	C420B7WA	C420C7WA	C420P7WA	C420R7WA	C420AR7WA
	Dual Rated:	3P/4W, 16/20A 3P 250 VAC	C420B9WA	C420C9WA	C420P9WA	C420R9WA	C420AR9WA
		4P/5W, 20A 347/600V	C520B5WA	C520C5WA	C520P5WA	C520R5WA	C520AR5WA
	Dual Rated:	4P/5W, 16/20A 200-415V AC	C520B6WA	C520C6WA	C520P6WA	C520R6WA	C520AR6WA
		4P/5W, 20A 277/480V	C520B7WA	C520C7WA	C520P7WA	C520R7WA	C520AR7WA
Dual Rated:	4P/5W, 16/20A 120/208V	C520B9WA	C520C9WA	C520P9WA	C520R9WA	C520AR9WA	
30 & 32		2P/3W, 30A 125V AC	C330B4WA	C330C4WA	C330P4WA	C330R4WA	C330AR4WA
	Dual Rated:	2P/3W, 30A 250V/32A 220-240V	C330B6WA	C330C6WA	C330P6WA	C330R6WA	C330AR6WA
		2P/3W, 30A 480V AC	C330B7WA	C330C7WA	C330P7WA	C330R7WA	C330AR7WA
		3P/4W, 30A 3P 600V	C430B5WA	C430C5WA	C430P5WA	C430R5WA	C430AR5WA
	Dual Rated:	3P/4W, 30/32A 380-415V AC	C430B6WA	C430C6WA	C430P6WA	C430R6WA	C430AR6WA
		3P/4W, 30A 3P 480V	C430B7WA	C430C7WA	C430P7WA	C430R7WA	C430AR7WA
	Dual Rated:	3P/4W, 30/32A 3P 250 VAC	C430B9WA	C430C9WA	C430P9WA	C430R9WA	C430AR9WA
		4P/5W, 30A 347/600V	C530B5WA	C530C5WA	C530P5WA	C530R5WA	C530AR5WA
	Dual Rated:	4P/5W, 30/32A 200-415V AC	C530B6WA	C530C6WA	C530P6WA	C530R6WA	C530AR6WA
		4P/5W, 30A 277/480V	C530B7WA	C530C7WA	C530P7WA	C530R7WA	C530AR7WA
Dual Rated:	4P/5W, 30/32A 120/208V	C530B9WA	C530C9WA	C530P9WA	C530R9WA	C530AR9WA	
60 & 63		2P/3W, 60A 125V AC	C360B4WA	C360C4WA	C360P4WA	C360R4WA	C360AR4WA
	Dual Rated:	2P/3W, 60A 250V/63A 220-240V	C360B6WA	C360C6WA	C360P6WA	C360R6WA	C360AR6WA
		2P/3W, 60A 480V AC	C360B7WA	C360C7WA	C360P7WA	C360R7WA	C360AR7WA
		3P/4W, 60A 3P 600V	C460B5WA	C460C5WA	C460P5WA	C460R5WA	C460AR5WA
	Dual Rated:	3P/4W, 60/63A 380-415V AC	C460B6WA	C460C6WA	C460P6WA	C460R6WA	C460AR6WA
		3P/4W, 60A 3P 480V	C460B7WA	C460C7WA	C460P7WA	C460R7WA	C460AR7WA
	Dual Rated:	3P/4W, 60/63A 3P 250 VAC	C460B9WA	C460C9WA	C460P9WA	C460R9WA	C460AR9WA
		4P/5W, 60A 347/600V	C560B5WA	C560C5WA	C560P5WA	C560R5WA	C560AR5WA
	Dual Rated:	4P/5W, 60/63A 200-415V AC	C560B6WA	C560C6WA	C560P6WA	C560R6WA	C560AR6WA
		4P/5W, 60A 277/480V	C560B7WA	C560C7WA	C560P7WA	C560R7WA	C560AR7WA
Dual Rated:	4P/5W, 60/63A 120/208V	C560B9WA	C560C9WA	C560P9WA	C560R9WA	C560AR9WA	

**Watertight Series
North American Ratings (Cont'd)**



Amps	Dual Rated:	Ratings	Watertight IP67 Suitability				
			Inlet	Connector	Plug	Receptacle	Angled Receptacle
100 & 125	Dual Rated:	2P/3W, 100A 250V AC/125A 220-240V	C3100B6WA	C3100C6WA	C3100P6WA	C3100R6WA	C3100AR6WA
		2P/3W, 100A 480V AC	C3100B7WA	C3100C7WA	C3100P7WA	C3100R7WA	C3100AR7WA
		3P/4W, 100A 3P 600V	C4100B5WA	C4100C5WA	C4100P5WA	C4100R5WA	C4100AR5WA
	Dual Rated:	3P/4W, 100/125A 380-415V AC	C4100B6WA	C4100C6WA	C4100P6WA	C4100R6WA	C4100AR6WA
		3P/4W, 100A 3P 480V	C4100B7WA	C4100C7WA	C4100P7WA	C4100R7WA	C4100AR7WA
	Dual Rated:	3P/4W, 100/125A 3P 250 VAC	C4100B9WA	C4100C9WA	C4100P9WA	C4100R9WA	C4100AR9WA
		4P/5W, 100A 347/600V	C5100B5WA	C5100C5WA	C5100P5WA	C5100R5WA	C5100AR5WA
	Dual Rated:	4P/5W, 100/125A 200-415V AC	C5100B6WA	C5100C6WA	C5100P6WA	C5100R6WA	C5100AR6WA
		4P/5W, 100A 277/480V	C5100B7WA	C5100C7WA	C5100P7WA	C5100R7WA	C5100AR7WA
	Dual Rated:	4P/5W, 100/125A 120/208V	C5100B9WA	C5100C9WA	C5100P9WA	C5100R9WA	C5100AR9WA

**Watertight Series
International Ratings**



Amps	Ratings	Watertight IP67 Suitability				
		Inlet	Connector	Plug	Receptacle	Angled Receptacle
16A	2P/3W, 16A 100-130V	C316B4WA	C316C4WA	C316P4WA	C316R4WA	C316AR4WA
	2P/3W, 16A 220-240V	C316B6WA	C316C6WA	C316P6WA	C316R6WA	C316AR6WA
	2P/3W, 16A 380-415V	C416B6WA	C416C6WA	C416P6WA	C416R6WA	C416AR6WA
	4P/5W, 16A 200-415V	C516B6WA	C516C6WA	C516P6WA	C516R6WA	C516AR6WA
32A	2P/3W, 32A 100-130V	C332B4WA	C332C4WA	C332P4WA	C332R4WA	C332AR4WA
	2P/3W, 32A 220-240V	C332B6WA	C332C6WA	C332P6WA	C332R6WA	C332AR6WA
	3P/4W, 32A 380-480V	C432B3WA	C432C3WA	C432P3WA	C432R3WA	C432AR3WA
	3P/4W, 32A 380-415V	C432B6WA	C432C6WA	C432P6WA	C432R6WA	C432AR6WA
	4P/5W, 32A 200-415V	C532B6WA	C532C6WA	C532P6WA	C532R6WA	C532AR6WA
63A	2P/3W, 63A 220-240V	C363B6WA	C363C6WA	C363P6WA	C363R6WA	C363AR6WA
	3P/4W, 63A 380-415V	C463B6WA	C463C6WA	C463P6WA	C463R6WA	C463AR6WA
	4P/5W, 63A 200-415V	C563B6WA	C563C6WA	C563P6WA	C563R6WA	C563AR6WA
125A	2P/3W, 125A 220-240V	C3125B6WA	C3125C6WA	C3125P6WA	C3125R6WA	C3125AR6WA
	3P/4W, 125A 380-415V	C4125B6WA	C4125C6WA	C4125P6WA	C4125R6WA	C4125AR6WA
	4P/5W, 125A 200-415V	C5125B6WA	C5125C6WA	C5125P6WA	C5125R6WA	C5125AR6WA

Hubbell-PRO Splashproof Pin and Sleeve Devices

Splashproof Series North American Ratings

Amps	Ratings	Splashproof IP44 Suitability				
		Inlet	Connector	Plug	Receptacle	Angled Receptacle
16 & 20	2P/3W, 20A 125V AC	C320B4SA	C320C4SA	C320P4SA	C320R4SA	C320AR4SA
	Dual Rated 2P/3W, 20A 250V AC/16A 220-240V	C320B6SA	C320C6SA	C320P6SA	C320R6SA	C320AR6SA
	2P/3W, 20A 480V AC	C320B7SA	C320C7SA	C320P7SA	C320R7SA	C320AR7SA
	3P/4W, 20A 3Ø 600V	C420B5SA	C420C5SA	C420P5SA	C420R5SA	C420AR5SA
	Dual Rated 2P/3W, 20A 250V AC/16A 220-240V	C420B6SA	C420C6SA	C420P6SA	C420R6SA	C420AR6SA
	3P/4W, 20A 3Ø 480V	C420B7SA	C420C7SA	C420P7SA	C420R7SA	C420AR7SA
	Dual Rated 3P/4W, 16/20A 3P 250 VAC	C420B9SA	C420C9SA	C420P9SA	C420R9SA	C420AR9SA
	4P/5W, 20A 347/600V	C520B5SA	C520C5SA	C520P5SA	C520R5SA	C520AR5SA
	Dual Rated 4P/5W,16/20A 200-415V AC	C520B6SA	C520C6SA	C520P6SA	C520R6SA	C520AR6SA
	4P/5W, 20A 277/480V	C520B7SA	C520C7SA	C520P7SA	C520R7SA	C520AR7SA
Dual Rated 4P/5W,16/20A 120/208V	C520B9SA	C520C9SA	C520P9SA	C520R9SA	C520AR9SA	
30 & 32	2P/3W, 30A 125V AC	C330B4SA	C330C4SA	C330P4SA	C330R4SA	C330AR4SA
	Dual Rated 2P/3W, 30A 250V AC/32A 220-240V	C330B6SA	C330C6SA	C330P6SA	C330R6SA	C330AR6SA
	2P/3W, 30A 480V AC	C330B7SA	C330C7SA	C330P7SA	C330R7SA	C330AR7SA
	3P/4W, 30A 3Ø 600V	C430B5SA	C430C5SA	C430P5SA	C430R5SA	C430AR5SA
	Dual Rated 3P/4W, 30/32A 380-415V AC	C430B6SA	C430C6SA	C430P6SA	C430R6SA	C430AR6SA
	3P/4W, 30A 3Ø 480V	C430B7SA	C430C7SA	C430P7SA	C430R7SA	C430AR7SA
	Dual Rated 3P/4W, 30/32A 3P 250 VAC	C430B9SA	C430C9SA	C430P9SA	C430R9SA	C430AR9SA
	4P/5W, 30A 347/600V	C530B5SA	C530C5SA	C530P5SA	C530R5SA	C530AR5SA
	Dual Rated 4P/5W, 30/32A 200-415V AC	C530B6SA	C530C6SA	C530P6SA	C530R6SA	C530AR6SA
	4P/5W, 30A 277/480V	C530B7SA	C530C7SA	C530P7SA	C530R7SA	C530AR7SA
Dual Rated 4P/5W, 30/32A 120/208V	C530B9SA	C530C9SA	C530P9SA	C530R9SA	C530AR9SA	
60 & 63	2P/3W, 60A 125V AC	C360B4SA	C360C4SA	C360P4SA	C360R4SA	C360AR4SA
	Dual Rated 2P/3W, 60A 250V AC/63A 220-240V	C360B6SA	C360C6SA	C360P6SA	C360R6SA	C360AR6SA
	2P/3W, 60A 480V AC	C360B7SA	C360C7SA	C360P7SA	C360R7SA	C360AR7SA
	3P/4W, 60A 3Ø 600V	C460B5SA	C460C5SA	C460P5SA	C460R5SA	C460AR5SA
	Dual Rated 3P/4W, 60/63A 380-415V AC	C460B6SA	C460C6SA	C460P6SA	C460R6SA	C460AR6SA
	3P/4W, 60A 3Ø 480V	C460B7SA	C460C7SA	C460P7SA	C460R7SA	C460AR7SA
	Dual Rated 3P/4W, 60/63A 3P 250 VAC	C460B9SA	C460C9SA	C460P9SA	C460R9SA	C460AR9SA
	4P/5W, 60A 347/600V	C560B5SA	C560C5SA	C560P5SA	C560R5SA	C560AR5SA
	Dual Rated 4P/5W, 60/63A 200-415V AC	C560B6SA	C560C6SA	C560P6SA	C560R6SA	C560AR6SA
	4P/5W, 60A 277/480V	C560B7SA	C560C7SA	C560P7SA	C560R7SA	C560AR7SA
Dual Rated 4P/5W, 60/63A 120/208V	C560B9SA	C560C9SA	C560P9SA	C560R9SA	C560AR9SA	

Splashproof Series International Ratings

Amps	Ratings	Splashproof IP44 Suitability				
		Inlet	Connector	Plug	Receptacle	Angled Receptacle
16A	2P/3W, 16A 100-130V	C316B4SA	C316C4SA	C316P4SA	C316R4SA	C316AR4SA
	2P/3W, 16A 220-240V	C316B6SA	C316C6SA	C316P6SA	C316R6SA	C316AR6SA
	2P/3W, 16A 380-415V	C416B6SA	C416C6SA	C416P6SA	C416R6SA	C416AR6SA
	4P/5W, 16A 200-415V	C516B6SA	C516C6SA	C516P6SA	C516R6SA	C516AR6SA
32A	2P/3W, 32A 100-130V	C332B4SA	C332C4SA	C332P4SA	C332R4SA	C332AR4SA
	2P/3W, 32A 220-240V	C332B6SA	C332C6SA	C332P6SA	C332R6SA	C332AR6SA
	3P/4W, 32A 380-480V	C432B3SA	C432C3SA	C432P3SA	C432R3SA	C432AR3SA
	3P/4W, 32A 380-415V	C432B6SA	C432C6SA	C432P6SA	C432R6SA	C432AR6SA
	4P/5W, 32A 200-415V	C532B6SA	C532C6SA	C532P6SA	C532R6SA	C532AR6SA
63A	2P/3W, 63A 220-240V	C363B6SA	C363C6SA	C363P6SA	C363R6SA	C363AR6SA
	3P/4W, 63A 380-415V	C463B6SA	C463C6SA	C463P6SA	C463R6SA	C463AR6SA
	4P/5W, 63A 200-415V	C563B6SA	C563C6SA	C563P6SA	C563R6SA	C563AR6SA

Hubbell-PRO Pin and Sleeve Splashproof Devices

IP44
SUITABILITY

- 20, 30 and 60A - UL and cULus for use in North America
- 16, 32 and 63A - VDE listed for use Internationally
- Dual rated devices - UL, cULus and VDE listed



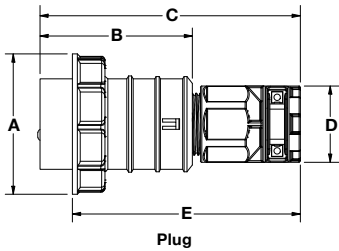
Improve installation time by over 80%

- Edge Series screwless terminations
- Glandless water ingress protection
- External strain relief
- OEM friendly bulk packs

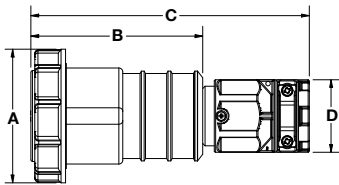


Watertight Series

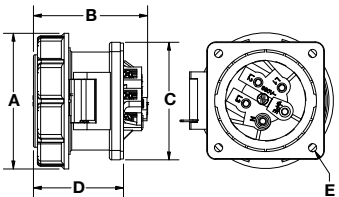
Product Dimensions Inches (mm)



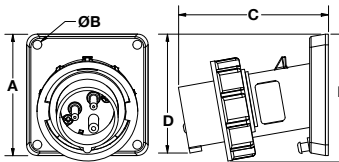
Plug



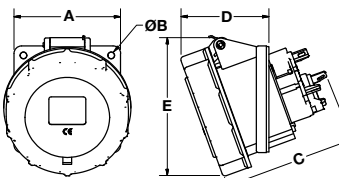
Connector



Receptacle



Inlet
Front & Side View



Angled Receptacle
Front & Side View

Plug	A	B	C	D	E
	Inches (mm)	Inches (mm)	Inches (mm)	Inches (mm)	Inches (mm)
C320P	2.78" (70)	3.62" (94)	5.98" (152)	1.73" (44)	5.20" (132)
C420P	2.78" (70)	3.7" (94)	6.3" (160)	1.73" (44)	5.39" (137)
C520P	3.41" (86)	3.61" (92)	6.34" (161)	1.85" (47)	5.55" (141)
C330P, C430P	3.7" (94)	4.49" (114)	8.03" (204)	2.32" (59)	6.81" (173)
C530P	4.0" (101)	4.49" (114)	8.11" (206)	2.32" (59)	6.73" (171)
C360P, C460P, C560P	4.47" (114)	6.0" (153)	10.24" (260)	2.83" (72)	8.19" (208)
C3100P, C4100P, C5100P	4.94" (126)	6.73" (171)	12.13" (308)	3.58" (91)	9.88" (251)
C316P	2.78" (70)	3.62" (94)	5.21" (132)	1.73" (44)	4.53" (115)
C416P	2.78" (70)	3.62" (94)	5.21" (132)	1.85" (47)	4.3" (109)
C516P	3.41" (86)	3.62" (94)	5.43" (138)	1.73" (44)	4.26" (108)
C332P, C432P	3.7" (94)	4.49" (114)	6.54" (166)	2.32" (59)	5.44" (138)
C532P	4.0" (101)	4.49" (114)	6.54" (166)	2.32" (59)	5.16" (131)
C363P, C463P, C563P	4.47" (114)	6.0" (153)	8.44" (214)	2.83" (72)	6.39" (162)
C3125P, C4125P, C5125P	4.94" (126)	6.73" (171)	9.77" (248)	3.58" (91)	7.52" (191)

Connector

C320C	2.78" (70)	4.29" (109)	6.77" (172)	1.73" (44)	
C420C	3.09" (78)	4.29" (109)	6.89" (175)	1.85" (47)	
C520C	3.41" (86)	4.41" (112)	7.2" (183)	1.73" (44)	
C330C, C430C	3.7" (94)	5.35" (136)	8.78" (223)	2.32" (59)	
C530C	4.0" (101)	5.35" (136)	8.98" (228)	2.32" (59)	
C360P, C460P, C560P	4.37" (111)	6.85" (174)	11.06" (285)	2.83" (72)	
C3100C, C4100C, C5100C	4.92" (125)	7.44" (189)	12.83" (326)	3.58" (91)	
C316C	2.78" (70)	4.29" (109)	5.88" (149)	1.73" (44)	
C416C	3.7" (94)	4.29" (109)	5.88" (149)	1.85" (47)	
C516C	4.0" (101)	4.41" (112)	6.22" (157)	1.73" (44)	
C332C, C432C	4.37" (111)	5.35" (136)	7.44" (187)	2.32" (59)	
C532C	4.37" (111)	5.35" (136)	7.4" (187)	2.32" (59)	
C363C, C463C, C563C	4.37" (111)	6.85" (174)	9.29" (235)	2.83" (72)	
C3125C, C4125C, C5125C	4.92" (125)	7.44" (189)	10.48" (266)	3.58" (91)	

Receptacle

C316R, C320R	2.78" (70)	2.83" (72)	2.95" (75)	2.17" (55)	0.22" (5)
C416R, C420R	3.09" (78)	3.23" (82)	2.95" (75)	2.24" (57)	0.22" (5)
C516R, C520R	3.39" (86)	2.83" (72)	2.95" (75)	2.17" (55)	0.22" (5)
C330R, C430R, C332R, C432R	3.7" (94)	4.25" (108)	2.95" (75)	2.68" (68)	0.22" (5)
C530R, C532R	3.98" (101)	4.33" (110)	2.95" (75)	2.52" (64)	0.22" (5)
All 60A & 63A	4.37" (111)	5.2" (132)	3.94" (100)	2.95" (75)	0.26" (6)
All 100 & 125A	4.92" (125)	6.42" (163)	4.72" (120)	4.53" (115)	0.28" (7)

Inlet

C316B, C320B	3.35" (85)	0.25" (6)	4.06" (103)	3.31" (84)	3.5" (89)
C416B, C420B	3.35" (85)	0.25" (6)	4.29" (109)	3.46" (88)	3.7" (94)
C516B, C520B	3.35" (85)	0.25" (6)	4.53" (115)	3.66" (93)	3.9" (99)
C330B, C430B, C332B, C432B	3.35" (85)	0.25" (6)	4.72" (120)	3.78" (96)	4.06" (103)
C530B, C532B	3.35" (85)	0.25" (6)	5.28" (134)	4.17" (106)	4.45" (113)
All 60A & 63A	3.94" (100)	0.26" (7)	6.1" (155)	4.65" (118)	4.92" (125)
All 100 & 125A	4.72" (120)	0.26" (7)	5.91" (150)	5.12" (130)	5.35" (136)

Angled Receptacle

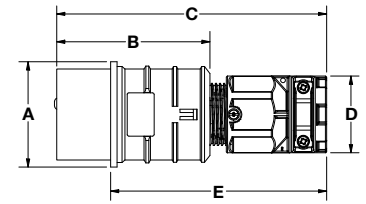
C316AR, C320AR	2.44" (62)	0.22" (5)	3.23" (82)	2.09" (53)	3.19" (81)
C416AR, C420AR	3.62" (92)	0.22" (5)	3.27" (83)	2.2" (56)	3.43" (87)
C516AR, C520AR	3.35" (85)	0.22" (5)	3.46" (88)	2.32" (59)	3.82" (97)
C330AR, C332AR, C430AR, C432AR	3.35" (85)	0.22" (5)	4.76" (121)	2.72" (69)	4.02" (102)
C530AR, C532AR	3.35" (85)	0.22" (5)	4.61" (117)	2.72" (69)	4.37" (111)
All 60AR	4.49" (114)	0.26" (6)	5.67" (144)	3.15" (80)	4.69" (119)
All 100AR	4.49" (114)	0.26" (6)	6.81" (173)	3.5" (89)	5.28" (134)

IP44 SUITABILITY

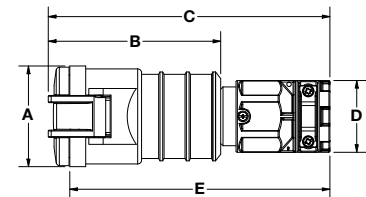
Splashproof Series

Product Dimensions Inches (mm)

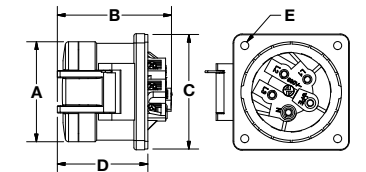
Plug	A	B	C	D	E
	Inches (mm)	Inches (mm)	Inches (mm)	Inches (mm)	Inches (mm)
C320P	2.01" (51)	3.62" (92)	6.18" (157)	1.73" (44)	4.88" (124)
C420P	2.28" (58)	3.58" (91)	6.18" (157)	1.73" (44)	4.88" (124)
C520P	2.54" (65)	3.70" (94)	6.54" (166)	1.85" (47)	5.24" (133)
C330P, C430P	2.60" (66)	4.61" (117)	8.03" (204)	2.32" (59)	6.22" (158)
C530P	2.83" (72)	4.61" (117)	8.03" (204)	2.32" (59)	6.22" (158)
C360P, C460P, C560P	3.80" (97)	6.0" (153)	10.04" (255)	2.83" (72)	7.40" (188)
C316P	2.01" (51)	3.62" (92)	6.18" (157)	1.73" (44)	4.88" (124)
C416P	2.28" (58)	3.58" (91)	6.18" (157)	1.73" (44)	4.88" (124)
C516P	2.54" (65)	3.70" (94)	6.54" (166)	1.85" (47)	5.24" (133)
C332P, C432P	2.60" (66)	4.61" (117)	8.03" (204)	2.32" (59)	6.22" (158)
C532P	2.83" (72)	4.61" (117)	8.03" (204)	2.32" (59)	6.22" (158)
C363P, C463P, C563P	3.80" (97)	6.0" (153)	10.04" (255)	2.82" (72)	7.44" (189)
Connector					
C320C	2.01" (51)	4.17" (106)	6.77" (172)	1.73" (44)	6.71" (170)
C420C	2.28" (58)	4.29" (109)	6.89" (175)	1.73" (44)	6.71" (170)
C520C	2.54" (65)	4.45" (113)	7.28" (185)	1.85" (47)	6.71" (170)
C330C, C430C	2.68" (68)	5.24" (133)	8.66" (220)	2.32" (59)	8.14" (207)
C530C	2.91" (74)	5.28" (134)	8.70" (221)	2.32" (59)	8.14" (207)
C360P, C460P, C560P	3.74" (95)	6.73" (171)	10.75" (273)	2.83" (72)	10.54" (268)
C316C	2.01" (51)	4.17" (106)	6.77" (172)	1.73" (44)	6.71" (170)
C416C	2.28" (58)	4.29" (109)	6.89" (175)	1.73" (44)	6.71" (170)
C516C	2.54" (65)	4.45" (113)	7.28" (185)	1.85" (47)	6.71" (170)
C332C, C432C	2.60" (66)	5.28" (134)	8.70" (221)	2.32" (59)	8.14" (207)
C532C	2.91" (74)	5.28" (134)	8.70" (221)	2.32" (59)	8.14" (207)
C363C, C463C, C563C	3.74" (95)	6.73" (171)	10.75" (273)	2.83" (72)	10.54" (268)
Receptacle					
C316R, C320R	2.01" (51)	2.76" (70)	2.95" (75)	2.09" (53)	0.22" (5)
C416R, C420R	2.26" (57)	3.07" (78)	2.95" (75)	2.09" (53)	0.22" (5)
C516R, C520R	2.54" (65)	2.76" (70)	2.95" (75)	2.09" (53)	0.22" (5)
C330R, C332R, C430R, C432R	2.60" (66)	4.13" (105)	2.95" (75)	2.48" (63)	0.22" (5)
C530R, C532R	2.83" (72)	4.29" (109)	2.95" (75)	2.48" (63)	0.22" (5)
All 60A & 63A	3.74" (95)	5.28" (134)	3.94" (100)	3.07" (78)	0.26" (6)
Inlet					
C316B, C320B	3.35" (85)	0.25" (6)	4.06" (103)	3.31" (84)	3.23" (82)
C416B, C420B	3.35" (85)	0.25" (6)	4.29" (109)	3.46" (88)	3.43" (87)
C516B, C520	3.35" (85)	0.25" (6)	4.53" (115)	3.66" (93)	3.62" (92)
All 30A	3.35" (85)	0.25" (6)	4.72" (120)	3.78" (96)	3.70" (94)
All 60A & 63A	3.94" (100)	0.26" (7)	6.10" (155)	4.65" (118)	4.53" (115)



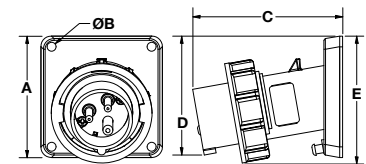
Plug



Connector



Receptacle



Inlet
Front & Side View

Accessories



- IP67 Non-metallic back boxes meet IP67 requirements when installed with a watertight conduit hub
- Back box features heavy duty cast aluminum construction with a durable enamel finish
- Adapter plates allow receptacles and inlets to be mounted to back boxes
- Closure caps provide a watertight seal for male plugs and flanged inlets when not mated

NEMA Type 1 Portable Outlet Box Cover Plates



For Use With	Hub Size Inches	Adapter Plates		Back Boxes		
		Required to Mount Receptacles and Inlets to Back Boxes	Non-metallic	Metallic		
			15° Angle	For Mounting Receptacles and Inlets		
			15° Angle	Feed-Thru	Four-Way	
20/30A	3/4" 1"	CAP2030	BB2030N	BB201W* BB301W*	FT202W* FT302W**	—
60A	1 1/4" 1 1/2"	CAP60	BB60N	BB601W* BB602W*	—	FW60100**
100A	1 1/2" 2"	CAP100	BB100N	BB1001W* BB1002W*	—	FW60100**

Closure Caps		
For Use With		Catalog Number
16/20A	3-Wire 4-Wire 5-Wire	PC320 PC420 PC520
30/32A	3 & 4-Wire 5-Wire	PC3430 PC530
60/63A	3, 4 & 5-Wire	PC60
100/125A	3, 4 & 5-Wire	PC100

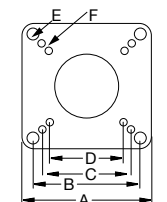
Note: *Adapter plates: 20/30A devices requires AP2030, 60A devices require AP60 and 100A devices require AP100 adapter plates, ordered separately.

**Requires AP60 adapter plate to mount 60A receptacle or inlet. 100A receptacle mounts directly to box. 100A inlet does not mount to this box.

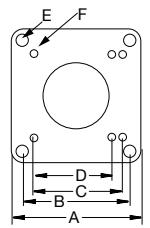
Product Dimensions Inches (mm)

	Adapter Plates			Back Boxes							
	20/30A	60A	100A	20/30A			60A		60/100A	100A	
				Non-metallic	Metallic		Non-metallic	Metallic		Non-metallic	Metallic
				15° Angle	15° Angle	Feed-Thru	15° Angle	15° Angle	Four-Way	15° Angle	15° Angle
A	3.76" (96.4)	4.51" (115.6)	5.52" (141.5)	5.67" (144.0)	5.12" (130.2)	8.25" (209.6)	7.76" (197.0)	7.25" (184.2)	8.75" (222.3)	8.21" (209.0)	8.12" (206.4)
B	3.13" (80.3)	3.88" (99.5)	4.87" (124.9)	4.44" (112.8)	4.00" (101.6)	3.06" (77.8)	5.16" (131.0)	5.25" (133.4)	9.75" (247.7)	6.23" (158.0)	6.75" (171.5)
C	2.76" (70.8)	3.03" (77.7)	4.25" (109.0)	4.05" (102.9)	4.19" (106.4)	7.14" (181.4)	5.87" (149.0)	6.00" (152.4)	7.75" (196.9)	6.31" (160.3)	6.88" (174.6)
D	2.36" (60.5)	3.35" (85.9)	3.94" (101.0)	3.91" (99.3)	3.75" (95.3)	4.50" (114.3)	4.72" (120.0)	4.50" (114.3)	6.75" (171.5)	5.71" (145.0)	5.50" (139.7)
E	0.22" (5.6) Dia.	0.22" (5.6) Dia.	0.22" (5.6) Dia.	2.35" (59.7)	3.00" (76.2)	3.75" (95.3)	2.99" (76.0)	3.75" (95.3)	6.00" (152.4)	3.99" (101.0)	4.75" (120.7)
F	0.18" (4.6) Dia.	0.18" (4.6) Dia.	0.18" (4.6) Dia.	4.92" (125.0)	4.00" (101.6)	3.13" (79.5)	6.94" (176.0)	6.19" (157.2)	—	7.41" (188.0)	6.94" (176.2)
G*	—	—	—	—	30.0" (492)	48.0" (787)	—	80.0" (1312)	210.0" (3444)	—	130.0" (2132)

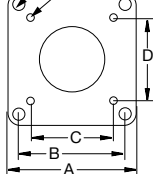
Note: *Capacity cu. in. (cm3).



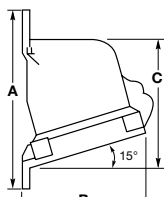
20/30A Adapter Plate



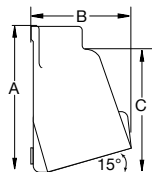
100A Adapter Plate



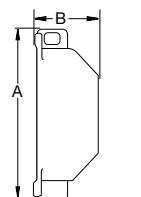
60A Adapter Plate



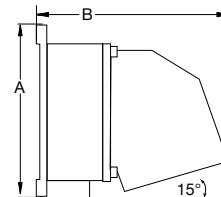
Non-Metallic Angle Box



Angle Box



Feed-Through Box



Four-Way Box

Specifications

Flammability: V-0

Complies with harmonized standard ANCE NMX-J-719-ANCE, CSA Group CSA C22.2 NO. C22.2 NO. 182.1-17, and UL Standard UL1682.

This harmonized standard was prepared by the Association of Standardization and Certification (ANCE), CSA Group, and Underwriters Laboratories Inc. (UL).

Watertight and Splashproof Materials

Part	Material	Part	Material
Plug		Receptacle	
Housing	PBT	Housing	PBT
Locking Ring	PBT/PC	Mounting Flange	PBT
Gasket & Seals	Neoprene, EPDM, TPE, Silicone	Cover Arm	PBT
Cord Clamp Assembly	PBT/PC	Cover	PBT
Gland Nut	PBT/PC	Cover Rivet	Brass
Assembly Screws	Stainless Steel (300 Series) (20, 30A Plated Steel)	Cover Spring	Stainless Steel (300 Series)
Contact Carrier	Reinforced Nylon (60A Nylon)	Gasket & Seals	Neoprene, EPDM, TPE, Silicone
Retainer	Reinforced Nylon	Mounting Screws	Stainless Steel (300 Series)
Ground, Phase Pins	Brass	Terminal Screw	Plated Steel
Terminal	Plated Steel	Phase, Ground Sleeves	Brass
		Contact Carrier & Retainer	Polyamide 6 (20A & 30A) Reinforced Nylon (60A & 100A Nylon)
Connector Body		Inlet	
Housing	PBT	Housing	PBT
Cord Clamp Assembly	PBT/PC	Locking Ring	PBT/PC
Gland Nut	PBT/PC	Gasket & Seals	Neoprene, EPDM, TPE, Silicone
Cover Arm	PBT	Assembly Screws	Stainless Steel (300 Series) (20, 30A Plated Steel)
Cover	PBT	Contact Carrier	Reinforced Nylon (60A Nylon)
Cover Rivet	Brass	Retainer	Reinforced Nylon
Cover Spring	Stainless Steel (300 Series)	Ground, Phase Pins	Reinforced Nylon
Gasket & Seals	Neoprene, EPDM, TPE, Silicone	Terminal	Brass
Contact Carrier	Reinforced Nylon (60A Nylon)		Plated Steel
Retainer	Reinforced Nylon		
Phase, Ground Sleeves	Brass		
Terminal	Plated Steel		
Assembly Screws	Stainless Steel (300 Series) (20, 30A Plated Steel)		

Grip Ranges

Amperage	Wires	UL Grip Range V	DE Grip Range
16/20 Amp	3	.370/.595	.36/7.08
16/20 Amp	4	.410/.650	.36/7.08
16/20 Amp	5	.650/.710	.630/.827
30/32 Amp	3	.565/.930	.565/1.61
30/32 Amp	4	.625/1.05	.565/1.61
30/32 Amp	5	.760/1.15	.565/1.61
60/63 Amp	3	.970/1.45	.970/1.45
60/63 Amp	4	1.050/1.45	.970/1.45
60/63 Amp	5	1.18/1.45	.970/1.45
100/125 Amp	3	1.05/1.51	1.22/1.89
100/125 Amp	4	0.905/1.68	1.22/1.89
100/125 Amp	5	1.063/1.88	1.22/1.89

Hubbell-PRO Pin and Sleeve Devices

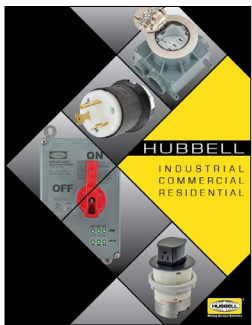


Online Resources

The Hubbell Wiring Device-Kellems website offers fast and convenient information through our online catalog, technical support, videos and more. The website also features a landing page on energy savings. Visit www.hubbell.com/wiringdevice-kellems/en.

Literature Support

Hubbell offers an extensive literature library for product support. Downloadable PDFs are available online.



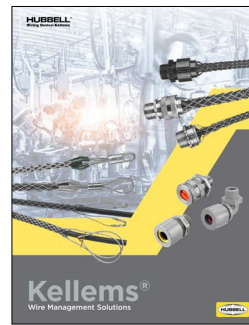
Hubbell Wiring Device-Kellems
Full Line Catalog



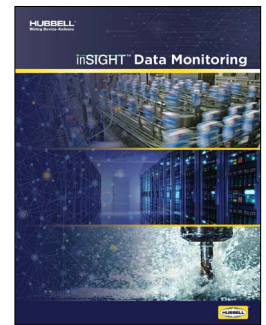
Advantage™ Series
IEC Pin and Sleeve Devices



Dual Certified
IEC Pin and Sleeve Devices



Kellems® Wire Management
Solutions



inSIGHT™ Data Monitoring
Solutions

HUBBELL®
Wiring Device-Kellems

www.hubbell.com/wiringdevice-kellems/en

