

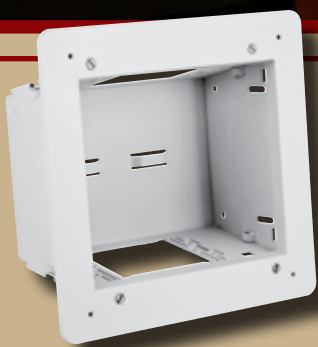
# Hubbell's AV In-Wall Enclosure Solutions



Commercial Solutions



Residential Solutions



# Connections You Can Count On



Reliable connections and wire management are easily achieved with Hubbell's variety of box and enclosure solutions for commercial and residential environments.

## Commercial Solutions



**Flat Panel Connection Enclosure**

When high connectivity is required, use Hubbell's Flat Panel Connection Enclosure. This product accommodates connections for HDMI, DVI, RG6/UQ and VGA, and allows for high density cables to hide behind the wall or entertainment center. It is ideal for TV's, Smartboards, or entertainment centers in commercial environments including: education, restaurants, hotels, and offices where sacrificing data speed is not an option.

### Features

- Integrated cable management
- Accepts standard electrical boxes
- Multiple device mounting options
- Sheet metal base, white powder coat finish
- Easily mounts to studs or sheetrock
- Trim ring covers rough-in

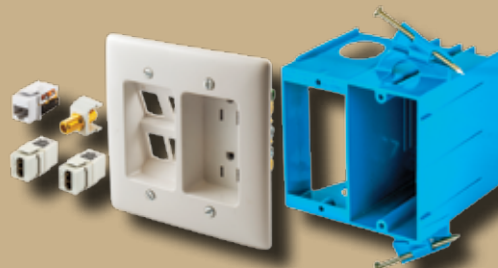


Utilize readily available and cost effective UTP data cables for AV with Hubbell's AV over UTP solutions. These AV extenders feature punch down terminations that provide quick high performance terminations.



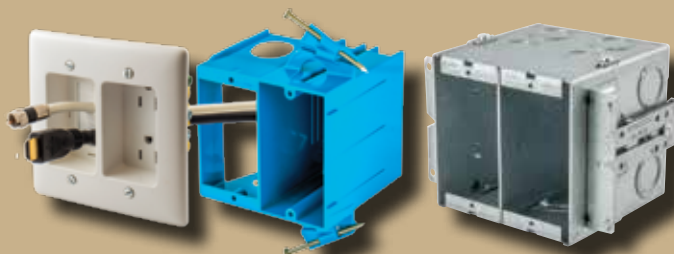


## Residential Solutions



**Recessed Receptacle with Snap Fit**

**Recessed Thermoplastic Box**



**Recessed Receptacle with Feed-Through**

**Metal Wallbox**

Hubbell has solutions for residential environments where wire management is a concern. Products sit flush against the wall and are available in multiple colors, creating an aesthetically pleasing look. Large connectors and cables are held securely and bundled together neatly. All wires are concealed behind the wall and out of view. Snap Fit options are used for customizing your connections.

### Features

#### Receptacles

- Snap Fit is configurable to accommodate multiple connectors such as: HDMI, AV, and Voice/Low-Speed Data
- Feed-Through options allows you to make direct connections
- 15A 125V
- Back and side wired

#### Boxes

- Available in plastic or metal boxes to accommodate local building requirements



Hubbell's AV In-Wall product line has solutions for even the most simple installations. These recessed cable plates protect low voltage cables and hold them securely, creating a direct connection.





NSAV6C



NSAV62M

### FPTV Connection Enclosure

Description	Color	Catalog Number
2-Gang in-wall enclosure	White	<b>NSAV62M</b>
4-Gang in-wall enclosure	White	<b>NSAV124M</b>
Steel cover for NSAV6 series	White	<b>NSAV6C</b>
Steel cover for NSAV12 series	White	<b>NSAV12C</b>



NSOKPS

### Power Kits

Description	Color	Catalog Number
Standard power kit	White	<b>NSOKPTR</b>
Surge protected power kit	Blue	<b>NSOKPS</b>

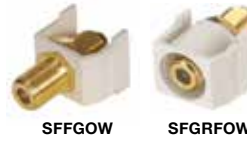


HBL985

### Gangable AV Wallbox

Box	Catalog Number
2-Gang, 4 in. deep, 2" KO, 54 in <sup>3</sup> capacity	<b>HBL985</b>
Divider for low voltage	<b>HBL989</b>

### Audio/Video Connectors



Color	Standard	Recessed
Almond	<b>SFFGAL</b>	-
Black	<b>SFFGBK</b>	<b>SFGRFBK</b>
Electric Ivory	<b>SFFGEI</b>	<b>SFGRFEI</b>
Gray	<b>SFFGGY</b>	<b>SFGRFGY</b>
Office White	<b>SFFGOW</b>	<b>SFGRFOW</b>
White	<b>SFFGW</b>	<b>SFGRFW</b>



NS801W



NS802W

### HDMI Decorator Frames

Description	Color	1-Gang, 1-Port	1-Gang, 2-Port
HDMI, decorator frame, female to female	Almond	<b>NS801AL</b>	<b>NS802AL</b>
	Black	<b>NS801BK</b>	<b>NS802BK</b>
	Gray	<b>NS801GY</b>	<b>NS802GY</b>
	Ivory	<b>NS801I</b>	<b>NS802I</b>
	Light Almond	<b>NS801LA</b>	<b>NS802LA</b>
	White	<b>NS801W</b>	<b>NS802W</b>



RR1510I



RR1512I



RR1514I

### Recessed Receptacles

Color	15A 125V, Tamper-Resistant Duplex Receptacle		
	1-Gang	2-Gang with Feed-Through	2-Gang with Snap Fit
Ivory	<b>RR1510I</b>	<b>RR1512I</b>	<b>RR1514I</b>
Light Almond	<b>RR1510LA</b>	<b>RR1512LA</b>	<b>RR1514LA</b>
White	<b>RR1510W</b>	<b>RR1512W</b>	<b>RR1514W</b>



NSAV1I



NSAV2I

### Feed-Through Plates

Color	1-Gang	2-Gang
Ivory	<b>NSAV1I*</b>	<b>NSAV2I*</b>
White	<b>NSAV1W*</b>	<b>NSAV2W*</b>



RR1500

### Recessed AV Wallbox

Description	Color	Catalog Number
2-Gang, nail-on box, thermoplastic	Blue	<b>RR1500</b>

### Molded-In Voice/Low-Speed Data, Modular Snap Fit



NSJ5EW

Color	Cat. 5e Jack (single)	Cat. 5e Jack (25 pack)
Black	<b>NSJ5EBK</b>	<b>NSJ5EBK25</b>
Blue	<b>NSJ5EB</b>	<b>NSJ5EB25</b>
Gray	<b>NSJ5EGY</b>	<b>NSJ5EGY25</b>
Green	<b>NSJ5EGN</b>	<b>NSJ5EGN25</b>
Ivory	<b>NSJ5EI</b>	<b>NSJ5EI25</b>
Light Almond	<b>NSJ5ELA</b>	<b>NSJ5ELA25</b>
Orange	<b>NSJ5EOR</b>	<b>NSJ5EOR25</b>
Red	<b>NSJ5ER</b>	<b>NSJ5ER25</b>
White	<b>NSJ5EW</b>	<b>NSJ5EW25</b>
Yellow	<b>NSJ5EY</b>	<b>NSJ5EY25</b>



SFHC14W

### HDMI Keystone Feed-Thru

Color	Catalog Number
Black	<b>SFHC14BK</b>
White	<b>SFHC14W</b>



NP26W



NSP16W

### Plates

Description	Color	Catalog Number
1-Gang decorator	White	<b>NP26W</b>
1-Gang 6-port snap fit	White	<b>NSP16W</b>

Please see the tradeSELECT® and netSELECT® sections of the full line Hubbell Catalog for complete product offering.