

"Buy American Compliant/ U.S. Government Procurement-Eligible"



Ground Fault Receptacles



Hubbell Manufacturing Facility, Newtown, CT

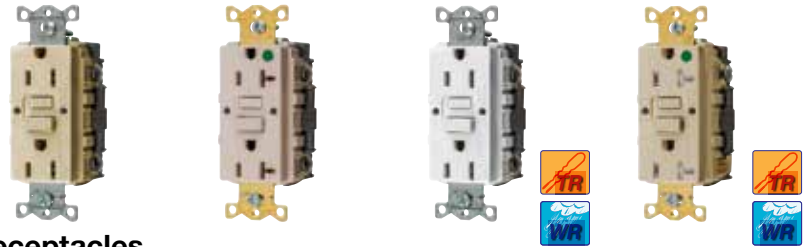
U.S. Government Procurement Eligibility Guidelines

Hubbell recognizes that sales to government end-users are subject to a number of unique requirements. For example, several U.S. laws contain restrictions on the origin of products that may be purchased by the U.S. Government. Most prominent among these is the Buy American Act of 1933 (“BAA”), which provides a competitive advantage to domestically-produced goods sold in the Federal Government procurement market. Another of the relevant laws, the Trade Agreements Act of 1979 (“TAA”), permits the President to waive the BAA and other discriminatory provisions for eligible products from countries that have signed an international agreement with the United States, or that meet certain other criteria, such as being produced in a least developed country. More recently, the American Recovery and Reinvestment Act of 2009 (“ARRA”), which was enacted to provide funding

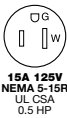

for numerous large-scale federal procurements and state and local projects, also contains certain “Buy American” restrictions which prohibit the use of ARRA funds for any project involving the construction, alteration, maintenance, or repair of a public building or public work unless all of the iron, steel and manufactured goods used in the project are produced in the United States.

This can be a confusing area to navigate. Hubbell understands and has devoted the time and resources necessary to be able to provide its customers with products that meet one or more the tests involved. The products identified in this brochure are examples of Hubbell’s commitment to providing its customers with U.S. government procurement- eligible products. If you have any questions about a specific product, or if your job or order requires a certification, please contact Hubbell Customer Service for assistance.

Commercial grade and hospital grade ground fault receptacles are assembled in the United States. With or without tamper-resistant shutters, Hubbell’s high quality ground fault receptacles are UL 943 listed and “Buy American Compliant/U.S. Government Procurement-Eligible”.



AUTOGUARD® Commercial GFCI Receptacles

Rating	Color	Standard	Hospital Grade ●	Standard	Hospital Grade ●
	Ivory	GFRST15IU	GFRST82IU	GFTWRST15IU	GFTWRST82IU
	Light Almond	GFRST15LAU	GFRST82LAU	GFTWRST15LAU	GFTWRST82LAU
	White	GFRST15WU	GFRST82WU	GFTWRST15WU	GFTWRST82WU
	Other Colors*	GFRST15*U	GFRST82*U	GFTWRST15*U	GFTWRST82*U
	Ivory	GFRST20IU	GFRST83IU	GFTWRST20IU	GFTWRST83IU
	Light Almond	GFRST20LAU	GFRST83LAU	GFTWRST20LAU	GFTWRST83LAU
	White	GFRST20WU	GFRST83WU	GFTWRST20WU	GFTWRST83WU
	Other Colors*	GFRST20*U	GFRST83*U	GFTWRST20*U	GFTWRST83*U

*Other colors include the following. To order, please replace * with the color code in parentheses. Almond (AL), Black (BK), Brown (No Suffix), Gray (GY) and Red (R).



GFP15M

IP21 SUITABILITY

Multiple Outlet Portable GFCI

Description	Rating	Receptacles	Plug	Catalog Number
4 Outlet, Manual Set, yellow	15A, 120V AC	2-Duplex NEMA 5-15R	NEMA 5-15P	GFP15M
4 Outlet, Manual Set, yellow	20A, 120V AC	2-Duplex NEMA 5-20R	NEMA 5-20P	GFP20M



Visit www.hubbell-wiring.com for complete product listing

Comprehensive country of origin catalog number list is available from Hubbell Customer Service or your local Hubbell Territory Manager



Duplex Receptacles

HBL® Extra Heavy Duty Duplex Receptacles

Description	Color	15A 125V	20A 125V
Hospital Grade ●, flush, thermoplastic polyester face, back and side wired.	Ivory Light Almond White	HBL8200I HBL8200LA HBL8200W	HBL8300I HBL8300LA HBL8300W
Hospital Grade ●, Tamper-Resistant receptacle with wire leads. Complies with requirements of NEC® article 517-18(c).	Ivory Light Almond White	HBL8200SGIA HBL8200SGLA HBL8200SGWA	HBL8300SGIA HBL8300SGLA HBL8300SGWA
Specification Grade, flush, nylon face, back and side wired.	Ivory White	HBL5262I HBL5262W	HBL5362I HBL5362W
Specification Grade, Tamper-Resistant, flush, nylon face, back and side wired.	Ivory Light Almond White	HBL5262ITR HBL5262LATR HBL5262WTR	HBL5362ITR HBL5362LATR HBL5362WTR
Specification Grade, Weather Resistant, flush, nylon face, back and side wired.	Ivory White	HBL5262IWRA HBL5262WWRA	HBL5362IWRA HBL5362WWRA



Extra Heavy Duty SNAPConnect® Duplex Receptacles

Description	Color	15A 125V	20A 125V
Hospital Grade ●, smooth nylon face, modular receptacle which requires pigtailed connector below.	Ivory Light Almond White	SNAP8200INA SNAP8200LANA SNAP8200WNA	SNAP8300INA SNAP8300LANA SNAP8300WNA
Hospital Grade ●, Tamper-Resistant, smooth nylon face, modular receptacle which requires pigtailed connector below.	Ivory Light Almond White	SNAP8200ITRA SNAP8200LATRA SNAP8200WTRA	SNAP8300ITRA SNAP8300LATRA SNAP8300WTRA
Specification Grade, smooth nylon face, modular receptacle which requires pigtailed connector below.	Ivory Light Almond White	SNAP5262INA SNAP5262LANA SNAP5262WNA	SNAP5362INA SNAP5362LANA SNAP5362WNA
Specification Grade, Tamper-Resistant, smooth nylon face, modular receptacle which requires pigtailed connector below.	Ivory Light Almond White	SNAP5262ITRA SNAP5262LATRA SNAP5262WTRA	SNAP5362ITRA SNAP5362LATRA SNAP5362WTRA



SNAPConnect® Right Angle Pigtailed Connector

Description	Wire Type	Catalog Number
Clear right angle terminal with 6 inch leads #12 AWG THHN/THWN-2; Polycarbonate housing material	Solid	SNAP1RNA
	Stranded	SNAP2RNA



Hubbell-PRO Heavy Duty Duplex Receptacles

Description	Color	15A 125V	20A 125V
Hospital Grade ●, smooth nylon face, back and side wired.	Ivory Light Almond White	8200IV 8200LA 8200WHI	8300IV 8300LA 8300WHI
Hospital Grade ●, Tamper-Resistant, smooth nylon face, back and side wired.	Ivory Light Almond White	8200IVTRA 8200LATRA 8200WTRA	8300IVTRA 8300LATRA 8300WTRA
Specification Grade, smooth nylon face, back and side wired.	Ivory Light Almond White	5252AI 5252ALA 5252AW	5352AI 5352ALA 5352AW
Finder groove nylon face, back and side wired.	Ivory Light Almond White	5262I 5262LA 5262W	5362I 5362LA 5362W
Weather Resistant, finder groove nylon face, back and side wired.	Ivory White	5262IWR 5262WWR	5362IWR 5362WWR
Isolated ground, finder groove face, back and side wired.	Ivory Orange White	CR5252IGI CR5252IG CR5252IGW	CR5352IGI CR5352IG CR5352IGW



Visit www.hubbell-wiring.com for complete product listing

Comprehensive country of origin catalog number list is available from Hubbell Customer Service or your local Hubbell Territory Manager





Switches



SNAP1201INA



SNAP1223WNA



SNAP1201ILINA



SNAP1221PLWNA



CS1201IU



CS1221WU

SNAPConnect® Specification Grade Toggle Series 15A, 120-277V AC

Description	Toggle Color	Single Pole	Double Pole	Three Way	Four Way
SNAPConnect® Toggle.	Ivory	SNAP1201INA	—	SNAP1203INA	—
	Light Almond	SNAP1201LANA	—	SNAP1203LANA	—
	White	SNAP1201WNA	—	SNAP1203WNA	—

20A, 120-277V AC

Description	Toggle Color	Single Pole	Double Pole	Three Way	Four Way
SNAPConnect® Toggle.	Ivory	SNAP1221INA	—	SNAP1223INA	—
	Light Almond	SNAP1221LANA	—	SNAP1223LANA	—
	White	SNAP1221WNA	—	SNAP1223WNA	—

Illuminated, Light ON with Load OFF 15A, 120-277V AC

Description	Toggle Color	Single Pole	Double Pole	Three Way	Four Way
Illuminated, Light ON with Load OFF, Toggle, Blue LED.	Ivory	SNAP1201ILINA	—	SNAP1203ILINA	—
	White	SNAP1201ILWNA	—	SNAP1203ILWNA	—

20A, 120-277V AC

Description	Toggle Color	Single Pole	Double Pole	Three Way	Four Way
Illuminated, Light ON with Load OFF, Toggle, Blue LED.	Ivory	SNAP1221ILINA	—	SNAP1223ILINA	—
	White	SNAP1221ILWNA	—	SNAP1223ILWNA	—

Pilot, Light ON with Load ON 15A, 120-277V AC

Description	Toggle Color	Single Pole	Double Pole	Three Way	Four Way
Pilot, Light ON with Load ON, Toggle, Red LED.	Ivory	SNAP1201PLINA	—	—	—
	White	SNAP1201PLWNA	—	—	—

20A, 120-277V AC

Description	Toggle Color	Single Pole	Double Pole	Three Way	Four Way
Pilot, Light ON with Load ON, Toggle, Red LED.	Ivory	SNAP1221PLINA	—	—	—
	White	SNAP1221PLWNA	—	—	—

Construction Series, Heavy Duty, Specification Grade Switches

Description	Color	15A	20A
		120/277V AC	120/277V AC
Description	Color	Catalog Number	Catalog Number
Single pole, toggle, back and side wired.	Ivory	CS1201IU	CS1221IU
	White	CS1201WU	CS1221WU
Double pole, toggle, back and side wired.	Ivory	CS1202IU	CS1222IU
	White	CS1202WU	CS1222WU
Three way, toggle, back and side wired.	Ivory	CS1203IU	CS1223IU
	White	CS1203WU	CS1223WU
Four way, toggle, back and side wired.	Ivory	CS1204IU	CS1224IU
	White	CS1204WU	CS1224WU



Visit www.hubbell-wiring.com for complete product listing

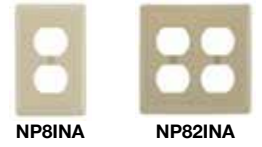
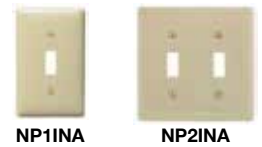
Comprehensive country of origin catalog number list is available from Hubbell Customer Service or your local Hubbell Territory Manager



Thermoplastic and Stainless Steel Wallplates

Thermoplastic Wallplates

	Minimum Order Qty	Standard Size			Mid-Size	
		Ivory	White	Red	Ivory	White
Toggle Wallplates						
1-Gang; 1-toggle opening	25	NP1INA	NP1WNA	NP1RNA	NPJ1INA	NPJ1WNA
2-Gang; 2-toggle openings	10	NP2INA	NP2WNA	NP2RNA	NPJ2INA	NPJ2WNA
3-Gang; 3-toggle openings	10	NP3INA	NP3WNA	—	NPJ3INA	NPJ3WNA
4-Gang; 4-toggle openings	10	NP4INA	NP4WNA	—	NPJ4INA	NPJ4WNA
Duplex Wallplates						
1-Gang; 1-duplex opening	25	NP8INA	NP8WNA	NP8RNA	NPJ8INA	NPJ8WNA
2-Gang; 2-duplex openings	10	NP82INA	NP82WNA	NP82RNA	NPJ82INA	NPJ82WNA
Decorator Wallplates						
1-Gang; 1-decorator opening	25	NP26INA	NP26WNA	NP26RNA	NPJ26INA	NPJ26WNA
2-Gang; 2-decorator openings	10	NP262INA	NP262WNA	NP262RNA	NPJ262INA	NPJ262WNA
3-Gang; 3-decorator openings	10	NP263INA	NP263WNA	—	NPJ263INA	NPJ263WNA
4-Gang; 4-decorator openings	10	NP264INA	NP264WNA	—	NPJ264INA	NPJ264WNA
Single Receptacle Wallplates						
1-Gang; 1-single 1.41" (35.7) dia. opening	25	NP7INA	NP7WNA	NP7RNA	NPJ7INA	NPJ7WNA
1-Gang; 1-single 2.13" (53.9) dia. opening	25	NP724INA	NP724WNA	—	NPJ724INA	NPJ724WNA
2-Gang; 1-single 2.13" (53.9) dia. opening	10	NP703INA	NP703WNA	—	—	—
Blank Wallplates						
1-Gang, box mount	25	NP13INA	NP13WNA	—	NPJ13INA	NPJ13WNA
2-Gang, box mount	10	NP23INA	NP23WNA	—	NPJ23INA	NPJ23WNA
Combination Wallplates						
2-Gang; 1-toggle and 1-duplex opening	10	NP18INA	NP18WNA	—	NPJ18INA	NPJ18WNA
2-Gang; 1-toggle and 1-decorator opening	10	NP126INA	NP126WNA	—	NPJ126INA	NPJ126WNA
2-Gang; 1-duplex and 1-decorator opening	10	NP826INA	NP826WNA	—	NPJ826INA	NPJ826WNA
Telephone & Coaxial Wallplates						
1-Gang; 1-telephone .63" (16.0) dia. hole; box mount	25	NP11INA	NP11WNA	—	NPJ11INA	NPJ11WNA



302/304 Stainless Steel and 430 Stainless Steel Wallplates

Hubbell's broad offering of stainless steel wallplates are available in both 302/304 stainless steel or in the more economical 430 stainless steel version. All stainless plates are "Buy American Compliant/U.S. Government Procurement-Eligible".

Description	Material	Single Gang	Two Gang
Switch 302/304 SS	Stainless Steel	SS1	SS2
Switch 430 SS	Stainless Steel	SS1L	SS2L
Duplex 302/304 SS	Stainless Steel	SS8	SS82
Duplex 430 SS	Stainless Steel	SS8L	SS82L
Decorator 302/304 SS	Stainless Steel	SS26	SS262
Decorator 430 SS	Stainless Steel	SS26L	SS262L



Visit www.hubbell-wiring.com for complete product listing

Comprehensive country of origin catalog number list is available from Hubbell Customer Service or your local Hubbell Territory Manager



H-MOSS® Occupancy Sensors and Lighting Controls



Hubbell Lighting Control Manufacturing and Design, Austin, TX

Hubbell Occupancy Sensors Play a Key Role

Strive for reduced energy costs with Hubbell Occupancy Sensors and Lighting Controls. In the U.S., lighting consumes 22% of electricity and represents \$40 billion a year in energy costs. Using advanced technology, Hubbell's H-MOSS® Occupancy Sensors are doing their part to save energy and provide sustainability by automatically and effectively turning lights on when a room is occupied and off when a room is vacant. In a typical office building, lighting accounts for 35 to 45% of energy use, H-MOSS Occupancy Sensors have the potential to reduce wasted lighting by 13 to 90% for a significant return on investment (ROI).

Adaptive Technology

- “Install and forget” operation
- Zero arc point switching
- Dual 120/277V AC operation; no neutral required
- Auto or manual ON operating modes (2000 series)
- Manual ON (Vacancy) operating mode (2001 series)
- No minimum load requirements
- Hard lens (dual technology, passive infrared)
- Steel mounting strap
- Built-in photocell with manual super saver mode for daylight harvesting
- Bi-level switching or dual load control (2 or 2N suffix)
- Compatible with most LED and CFL
- CEC Title 24 Compliant
- cULus

Dual (Ultrasonic and Passive Infrared)

1000 square foot coverage with photocell, 800W Incandescent, 1000W Fluorescent at 120V AC, 1800W Fluorescent at 277V AC, 50/60Hz.



Description	Color	Single Circuit		Dual Circuit	
		1 button for manual/auto control	Auto control with no button	2 buttons for manual/auto control	Auto control with no button
Dual (ultrasonic and passive infrared)	Black	AD2000BK1U	AD2000BK1NU	AD2000BK2U	AD2000BK2NU
	Gray	AD2000GY1U	AD2000GY1NU	AD2000GY2U	AD2000GY2NU
	Ivory	AD2000I1U	AD2000I1NU	AD2000I2U	AD2000I2NU
	Light Almond	AD2000LA1U	AD2000LA1NU	AD2000LA2U	AD2000LA2NU
	White	AD2000W1U	AD2000W1NU	AD2000W2U	AD2000W2NU

Ultrasonic

400 square foot coverage with photocell, 800W Incandescent, 1000W Fluorescent at 120V AC, 1800W Fluorescent at 277V AC, 50/60Hz.



Description	Color	Single Circuit		Dual Circuit	
		1 button for manual/auto control	Auto control with no button	2 buttons for manual/auto control	Auto control with no button
Ultrasonic	Black	AU2000BK1U	AU2000BK1NU	AU2000BK2U	AU2000BK2NU
	Gray	AU2000GY1U	AU2000GY1NU	AU2000GY2U	AU2000GY2NU
	Ivory	AU2000I1U	AU2000I1NU	AU2000I2U	AU2000I2NU
	Light Almond	AU2000LA1U	AU2000LA1NU	AU2000LA2U	AU2000LA2NU
	White	AU2000W1U	AU2000W1NU	AU2000W2U	AU2000W2NU

Passive Infrared

1000 square foot coverage with photocell, 800W Incandescent, 1000W Fluorescent at 120V AC, 1800W Fluorescent at 277V AC, 50/60Hz.



Description	Color	Single Circuit		Dual Circuit	
		1 button for manual/auto control	Auto control with no button	2 buttons for manual/auto control	Auto control with no button
Passive infrared	Black	AP2000BK1U	AP2000BK1NU	AP2000BK2U	AP2000BK2NU
	Gray	AP2000GY1U	AP2000GY1NU	AP2000GY2U	AP2000GY2NU
	Ivory	AP2000I1U	AP2000I1NU	AP2000I2U	AP2000I2NU
	Light Almond	AP2000LA1U	AP2000LA1NU	AP2000LA2U	AP2000LA2NU
	White	AP2000W1U	AP2000W1NU	AP2000W2U	AP2000W2NU



Visit www.hubbell-wiring.com for complete product listing

Comprehensive country of origin catalog number list is available from Hubbell Customer Service or your local Hubbell Territory Manager



H-MOSS® Occupancy Sensors and Lighting Controls

Dual (Ultrasonic and Passive Infrared)

Description	Color	Coverage Area		
		2000 sq. ft. (360°)	1000 sq. ft. (180°)	500 sq. ft. (180°)
Low voltage sensor w/ photocell & isolated relay	Office White	ATD2000CRPU	ATD1000CRPU	ATD500CRPU
Low voltage sensor	Office White	ATD2000CU	ATD1000CU	ATD500CU
Line voltage sensor	Office White	ATD2000CLU	ATD1000CLU	—



ATD2000CU

ATD1000CU/
ATD500CU

Ultrasonic

Description	Color	Coverage Area		
		2000 sq. ft. (360°)	1000 sq. ft. (180°)	500 sq. ft. (180°)
Low voltage sensor w/ photocell & isolated relay	Office White	ATU2000CRPU	ATU1000CRPU	ATU500CRPU
Low voltage sensor	Office White	ATU2000CU	ATU1000CU	ATU500CU
Line voltage sensor	Office White	ATU2000CLU	ATU1000CLU	—



ATU2000CU

ATU1000CU/
ATU500CU

Passive Infrared

Description	Color	Coverage Area	
		1500 sq. ft. (360°)	450 sq. ft. (360°)
Low voltage sensor w/ photocell & isolated relay	Office White	ATP1500CRPU	ATP600CRPU
Low voltage sensor	Office White	ATP1500CU	ATP600CU
Line voltage sensor	Office White	ATP1500CLU	ATP600CLU



ATP1500CU/
ATP600CU

Dual (Ultrasonic and Passive Infrared)

Description	Color	Coverage	Catalog Number
Low voltage sensor 32kHz w/ photocell & isolated relay	Office White	1600 sq. ft.	ATD1600WRPU
Low voltage sensor 32kHz	Office White	1600 sq. ft.	ATD1600WU



ATD1600WU

ATP1600WU,
ATP120HBU

Passive Infrared

Description	Color	Coverage	Catalog Number
Low voltage sensor with photocell and isolated relay	Office White	1600 sq. ft.	ATP1600WRPU
Low voltage sensor	Office White	1600 sq. ft.	ATP1600WU
Low voltage sensor for aisle and high bay applications, with photocell and isolated relay	Office White	120 linear feet	ATP120HBRPU
Low voltage sensor for aisle and high bay applications	Office White	120 linear feet	ATP120HBU

Control Units

Description	Catalog Number
Automatic-ON operation, 120/277V AC, 50/60Hz	CU300AU
Manual-ON operation, 120/277V AC, 50/60Hz	CU300MU
Auto or manual-ON operation, 120/277V AC, 50/60Hz	CU300HDU



CU300AU,
CU300MU

CU300HDU

Wireless Control Units

Description	Catalog Number
Heavy Duty Control Unit with Wireless Transmitter, 100-277V AC	WLCU301
Wireless Status Transmitter, 24V DC	WLCA
Single (1) circuit heavy duty control unit with wireless receiver, 100-277V AC	WLC301
Dual (2) circuit heavy duty control unit with wireless receiver, 100-277V AC	WLC302
Dual (2) circuit heavy duty furniture feed box with relays and wireless receiver, 100-277V AC	WLC402W
Wireless control unit with isolated relay, 16A, 120V AC or 277V AC	WLC316R
Daylight sensor 0–107,000 Lux (0–10,000 foot candles)	WLDH



WLC316R

WLC301

DHADC

ACIPE

Daylight Harvesting

Description	Voltage	Catalog Number
Single zone continuous automatic dimming control	10V DC	DHADC
Indoor photocell	24V DC	DHIP
Outdoor photocell	24V DC	DHOP
Atrium photocell	24V DC	DHAP
Skylight photocell	24V DC	DHSP
Control module	24V DC	DHCM

Ceiling Sensors Accessories

Description	Catalog Number
Ceiling sensor infrared, NEMA 4X enclosure	ACIPE
Ceiling mount raceway adapter	ACMRA
Ceiling mount wire guard	ACMG

Visit www.hubbell-wiring.com for complete product listing

Comprehensive country of origin catalog number list is available from Hubbell Customer Service or your local Hubbell Territory Manager



“Buy American Compliant/U.S. Government Procurement-Eligible”

Network Wiring - Enterprise Grade Commercial Products



HJ6AB



HXJ6BK



HXJ5EB

NEXTSPEED® Jacks

Description	Category 6A	Category 6	Category 5e
Single Pack	HJ6Axx	HXJ6xx	HXJ5Exx
25-Pack	HJ6Axx25	HXJ6xx25	HXJ5Exx25

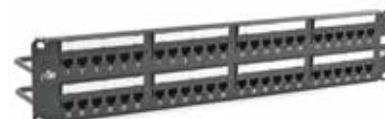
xx = colors: **AL** (Almond), **BK** (Black), **B** (Blue), **EI** (Electric Ivory), **GL** (Gold), **GY** (Gray), **GN** (Green), **OW** (Office White), **OR** (Orange), **P** (Purple), **R** (Red), **W** (White) and **Y** (Yellow).



HP6A24



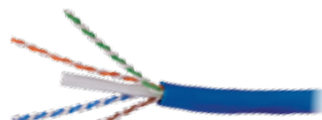
HP648A



HP5E48

NEXTSPEED® Patch Panels

Format	Color	Category 6A	Category 6	Category 5e
24-Port Standard	Black	HP6A24	HP624	HP5E24
	White	HP6A24W	HP624W	HP5E24W
24-Port Angled	Black	HP6A24A	HP624A	HP5E24A
48-Port Standard	Black	HP6A48	HP648	HP5E48
	White	HP6A48W	HP648W	HP5E48W
48-Port Angled	Black	HP6A48A	HP648A	HP5E48A



C6ASRB



C6RPY



C5ERPPGY

NEXTSPEED® UPT Cable

Description	Color	Category 6A	Category 6	Category 5e
Plenum	Blue	C6ASPB	C6RPB	C5EPRPB
	Gray	C6ASPGY	C6RPGY	C5EPRPGY
	White	C6ASPW	C6RPW	C5EPRPW
	Yellow	C6ASPY	C6RPY	C5EPRPY
Riser	Blue	C6ASRB	C6RRB	C5EPRRB
	Gray	C6ASRGY	C6RRGY	C5EPRRGY
	White	C6ASRW	C6RRW	C5EPRRW
	Yellow	C6ASRY	C6RRY	C5EPRRY



HC6AB01



HC6Y01



HC5EB01

NEXTSPEED® Patch Cords

Description	Color	Category 6A	Category 6	Category 5e
Patch Cord	Black	HC6ABKyy	HC6BKyy	HC5EBKyy
	Blue	HC6AByy	HC6Byy	HC5EByy
	Gray	HC6AGYyy	HC6GYyy	HC5EGYyy
	Green	HC6AGNyy	HC6GNyy	HC5EGNyy
	Orange	HC6AORyy	HC6ORyy	HC5EORyy
	Purple	HC6APyy	HC6Pyy	HC5EPyy
	Pink	HC6APKyy	HC6PKyy	HC5EPKyy
	Red	HC6ARyy	HC6Ryy	HC5ERyy
	White	HC6AWyy	HC6Wyy	HC5EWyy
	Yellow	HC6AYyy	HC6Yyy	HC5EYyy

yy = Standard Length: **01** (1'), **03** (3'), **05** (5'), **07** (7'), **10** (10'), **15** (15'), **20** (20'), **25** (25'). Made-to-order lengths are available from 30 ft. to 75 ft. in 5 ft. increments.



Visit www.hubbell-wiring.com for complete product listing

Comprehensive country of origin catalog number list is available from Hubbell Customer Service or your local Hubbell Territory Manager

Network Wiring - Enterprise Grade Commercial Products



6110FTK64NL



6110FTK192WL



110BLK100FTK4

NEXTSPEED® Field Termination Kits

Pairs	Legs	Connecting Blocks	Category 6A	Category 6
64-pair	With	16	6110FTK64WL	6110FTK64WL
64-pair	Without	16	6110FTK64NL	6110FTK64NL
192-pair	With	64	6110FTK192WL	6110FTK192WL

Pairs with 4-pair blocks	Category 5e
50-pair	110BLK50FTK4
100-pair	110BLK100FTK4
300-pair	110BLK300FTK4



OCLCQ50G

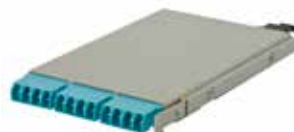


Fiber Trunk Assembly,
Made to Order

Standard SC/LC-MPO Cassettes

50, OM3		
Description	Ports	Catalog Number
SC duplex	12	OCSC50G
LC duplex	12	OCLC50G
LC duplex	24	OCLCD50G
LC quad	24	OCLCQ50G

Note: Standard LC-MPO cassettes are not compatible with the HD enclosures.



OCLCHD50G3

Ultra Compact LC-MPO Cassettes

Description	Catalog Number
12-port, 50, OM3	OCLCHD50G3

Fiber Trunk Cable Assemblies

BIDnet pre-terminated fiber trunk assemblies are custom made to order in any length, fiber type or cable construction for a reliable, high-performance data center.

- Fast, efficient deployment
- 100% factory tested and assembled
- Mission Critical® 25-year warranty

MPO round, OM3/OM4

Options	Applications Supported
12-fiber	10/40 GbE
24-fiber	10/40/100 GbE
48-fiber	10/40/100 GbE

Note: Contact your local distributor or Hubbell customer service for additional information on BIDnet Pre-Terminated Fiber Trunk Assemblies.





Spider® Boxes and Pin and Sleeve Devices



Hubbell Products for Military Applications and U.S. Government Facilities

Hubbell manufactures products that are “Buy American Compliant/U.S. Government Procurement-Eligible” and ideal for military housing complexes, training facilities, field use and government facilities such as the Lawrence Livermore National Laboratory.

Hubbell Wiring Systems has manufacturing sites in Connecticut, North Carolina, Texas and Puerto Rico producing thousands of different products every day.



60A Spider® II

Spider® Boxes

Hubbell's Spider II power distribution system sets the safety and performance standard for temporary power needs. Ideal for military bases, ship board applications, or mobile applications. Spider II boxes are Hubbell tough, HUBBELLSAFE!

- 30A units feature Twist-Lock® feed through (input and output) and NEMA 5-20R straight blade convenience outlets
- 50A 125/250V units feature NEMA 5-20R straight blade or NEMA L5-20R Twist-Lock receptacles and (1) NEMA L6-30R 30A 250V outlet
- 60A 120/208V units feature 60A pin and sleeve feed-through and Twist-Lock or straight blade outlets



60A Military Spider® II

Military Spider® II Boxes

These products are built to military requirements and are presently deployed domestically and abroad. All units feature straight blade or Twist-Lock® watertight receptacles, individual GFCI modules, electronic supervisory circuit and are completely field serviceable.

- Military Spider boxes feature Class L input and output devices
- 60A 120/208V Twist-Lock or straight blade outlets
- Twist-Lock® or straight blade outlets
- NATO 383 Green Color



HBL430P7W



HBL430R7W



HBL530R7W



HBL560C9W

HBL® Series Pin & Sleeve Devices

The only IEC Pin & Sleeve device manufactured in the USA, Hubbell offers the toughest and most comprehensive product offering in the industry. Hubbell tough, HUBBELLSAFE!

- 16A, 20A, 30A, 32A, 60A, 63A, 100A and 125A product lines
- 2P 3W, 3P 4W and 4P 5W versions in most voltage configurations
- Plugs, connectors, receptacles, inlets, outlets and a wide variety of boxes are available
- Advantage™ Series 30A & 60A Switch-Rated Devices are IEC 60309-2 compatible devices that are approved as a disconnecting means for motor and branch circuits

Circuit-Lock® Disconnect Switches / Mechanical Interlock Devices

Hubbell's Circuit-Lock® product line is a comprehensive offering of disconnect switches and mechanical interlock devices that adds or provides safety and durability to every installation.

- Manual Motor Controllers
- Fused Disconnects
- Unfused Disconnects
- Fused Mechanical Interlocks
- Unfused Mechanical Interlocks
- Interlocks for Twist-Lock®, IEC Pin & Sleeve and UL 1686 Pin & Sleeve devices



HBLDS3



HBL430MIF12W



Visit www.hubbell-wiring.com for complete product listing

Comprehensive country of origin catalog number list is available from Hubbell Customer Service or your local Hubbell Territory Manager

Cable Protection Products/Delivery Systems

Cable Protection Products

Non-metallic cable protectors are designed to safeguard electrical cables and cords from vehicle and pedestrian traffic.

- TrukTrak® system comes in two, three and five channel constructions with a variety of accessories
- TredTrak® is a five channel product that also includes a wide variety of fittings and end caps
- AccessTrak® is ADA compliant and offers expandability and flexibility for every application
- FloorTrak® is a flexible, non-metallic cover for cables that run over the floor when they can not be concealed or routed away from traffic patterns



SpikeShield® Panel Surge Protective Devices

Hubbell's SpikeShield family of Surge Protective Devices (SPDs) are UL 1449 third edition compliant and offer products that are ideal of residential, commercial and industrial applications.

- UL Type 1 surge arrestors for line side or load side installations
- UL Type 2 panel enclosed surge protective devices for load side applications at the service entrance, branch panel and point-of-use applications
- UL Type 2 wired-in surge protective devices for all load side applications



Pre-Fabricated Building Wiring System

Hubbell's Pre-Fabricated Building Wiring System is a feature rich product line that offers labor savings and enables the contractor to finish projects faster.

- Complete turn key system
- Pre-assembled boxes and brackets
- Specialized mounting brackets and hangers
- Pre-Fab solutions are manufactured to customer requirements



Pre-Wired Surface Raceway

Hubbell Pre-Wired Raceway Systems will accommodate power and data requirements as a facility changes over time. Pre-Wired Raceways provide the benefit of keeping fast track projects on schedule, and helping complete the job on time. Hubbell's Pre-Wired Raceway solutions will save up to 45% of the installation time needed for field installing component raceway parts.

- Aluminum Raceway
- Steel Raceway
- Non-Metallic Raceway
- Pre-Wired Raceway solutions are manufactured to customer requirements



Floor Boxes, Fire-Rated Poke-Throughs, Furniture Boxes

Hubbell manufactures a wide range of floor boxes, fire-rated poke-through devices and furniture connectivity boxes.

- Floor boxes available in stamped steel, cast iron, flush, recessed, and pedestal versions. A wide variety of cover materials and finishes are also available
- Fire-Rate Poke-Through Devices for every application
- Furniture connectivity products available in a variety of sizes, finishes and appearances



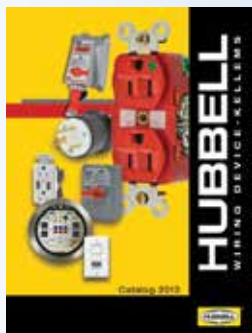
Visit www.hubbell-wiring.com for complete product listing

Comprehensive country of origin catalog number list is available from Hubbell Customer Service or your local Hubbell Territory Manager



Available Literature

Hubbell offers an extensive literature library for product support. Downloadable PDFs are available on line.



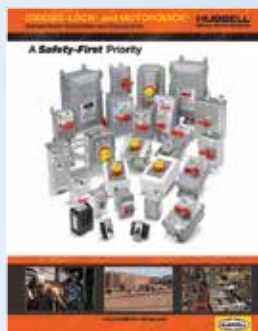
Hubbell Wiring Device-Kellems Catalog



Hubbell Full Line Catalog



Advantage Series Switched Pin & Sleeve



Circuit-Lock® and MotorQuick



SystemOne Recessed Floor Boxes