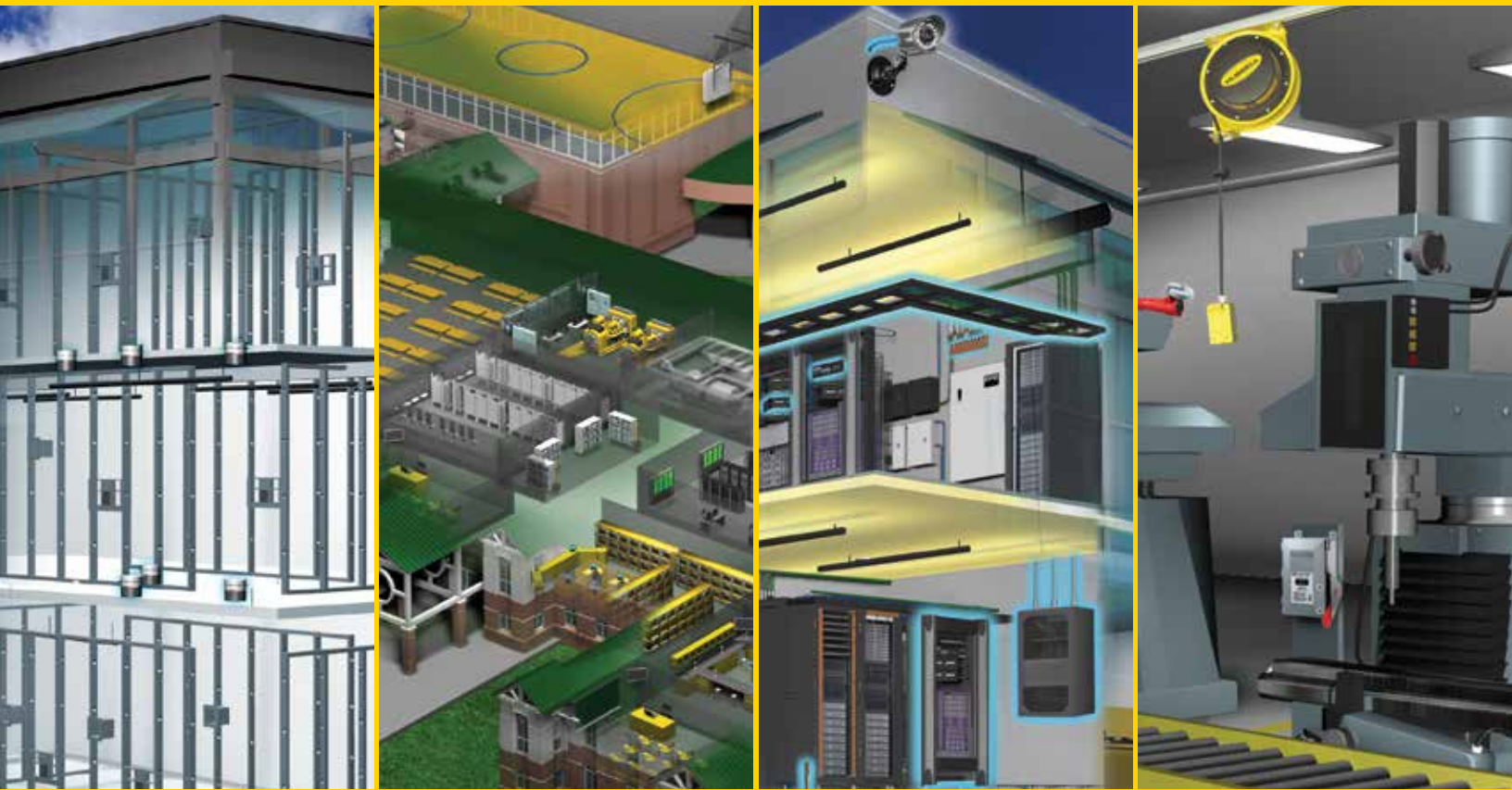


HUBBELL[®] INSTALLATION EFFICIENCY GUIDE



Complete more projects in less time with Hubbell products designed for enhanced productivity.



Time Savings on
New Construction



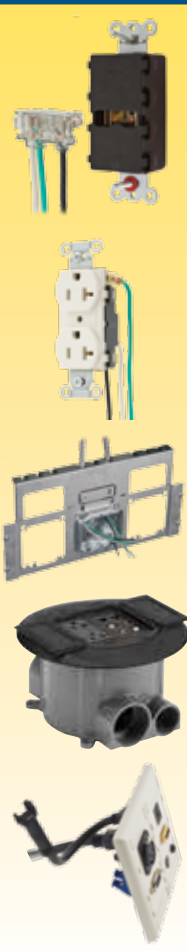
Reconfigurable
Renovations



Pre-Terminated
Systems



Efficient Operations in
Industrial MRO



New Construction

Constructing new facilities involves the installation of many building systems, involving several different trades and complex logistics. Productivity enhancements through labor savings solutions allow contractors to complete projects sooner, saving money and keeping construction on schedule. From SNAPConnect® devices with snap-in modular connectors, to a wide range of pre-wired, pre-manufactured and easy-to-install solutions, Hubbell has the products you need to complete new construction projects in less time.

	Page
SNAPConnect®	4
Pre-Wired Leaded Receptacles	5
Pre-Fab Building Wiring	6
SystemOne Floor Boxes	8
X-END Plug-n-Play System.....	14
Wire Mesh Basket Tray.....	15

Renovations

Whether it's expanding a facility, adding a wing, rearranging classrooms, learning spaces, or upgrading systems in an existing building, Hubbell has the solution to enable fast, efficient renovation and retrofit projects. Hubbell Pre-Wired Raceway quickly and efficiently deploys the latest power, voice, data and multimedia applications in existing buildings. The Connexion Zone Distribution System allows for reconfiguring raised-floor environments. SNAPConnect devices make for efficient device changeout and wireless sensors are the perfect solution for locations where rewiring may present a challenge.



	Page
SNAPConnect®	4
Pre-Wired Raceway.....	7
6-Inch and 8-Inch Fire-Rated Poke Throughs	8
Zone Distribution	9
Wireless Sensors.....	10
X-END Plug-n-Play System.....	14
Wire Mesh Basket Tray.....	15





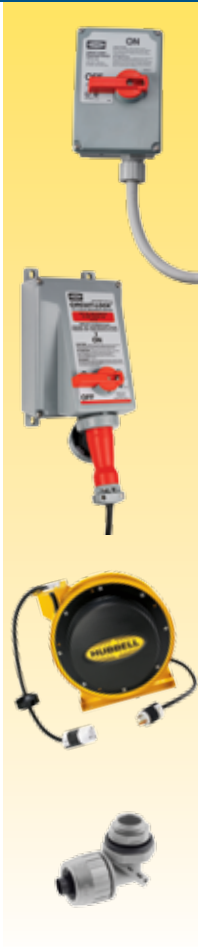
Data Center

Rapid data center deployment and upgrades are essential to maintaining network uptime and ongoing communication for any business or institution. Hubbell has designed installation efficiency into its data center solutions—from tools that reduce termination time and cable management systems with fully integrated features. High performance pre-terminated fiber and copper cable assemblies are custom configured to order and ready to plug and play.

	Page
iFRAME®	11
Pre-Terminated Assemblies.....	12
Fiber Connectors and Cassettes.....	13
X-END Plug-n-Play System.....	14
One Punch Tool	14
Wire Mesh Basket Tray.....	15

Industrial MRO

Maximizing productivity and uptime in manufacturing facilities requires efficient maintenance, repair and operation. Hubbell offers a wide range of solutions that reduce the need for repair, maximize uptime and improve productivity—all while meeting the safety and reliability needs of harsh industrial environments. From Linkosity® and MotorQuick® for fast reconfiguring and replacement of motors and machinery, to easy-to-install manual motor solutions, Hubbell keeps today's assembly lines, products and services operating efficiently.



	Page
Circuit-Lock® Disconnect Switches.....	16
MotorQuick® and Linkosity®	16
Mechanical Interlocks	17
Industrial Cord Reels	18
PolyTuff® Non-Metallic Liquidtight.....	19



SNAPConnect® Devices offer superior installation efficiency for new construction and renovations, while delivering safe, reliable connections. Instead of conventional wiring methods, SNAPConnect's modular connector is installed during rough-in in lieu of pigtailed. Once the walls are up, the protective covering is removed and the terminal is simply snapped into the SNAPConnect device for a consistent connection every time. Once installed, SNAPConnect's modular design enables simple device change-out by maintenance personnel.



- Poly-bagged connector stays clean during construction
- Allows for circuit testing with standard test probes
- Low-profile, flush fit provides stylish appearance and more wiring room
- Eliminates exposed live parts for better safety
- Buy American compliant/U.S. Government Procurement (NA suffix)
- Tamper-resistant versions

Ordering Information

SNAPConnect® Duplex Receptacles



Description	15A 125V	20A 125V
Duplex, FINDER Groove Face Hospital Grade ●	SNAP5262xx SNAP8200xxA	SNAP5362xxA SNAP8300xxA
Style Line® Decorator Hospital Grade ●	SNAP2152xx SNAP2172xxA	SNAP2162xxA SNAP2182xxA
Tamper-Resistant Smooth Face Hospital Grade ●	SNAP5262xxTR SNAP8200xxTR	SNAP5362xxTR SNAP8300xxTR

SNAPConnect® Commercial Grade GFCI Buy American Compliant

Description	15A 125V	20A 125V
Commercial Grade Hospital Grade ●	GFR15SNAPxxNA GFR8200SNAPxxNA	GFR20SNAPxxNA GFR8300SNAPxxNA
Tamper/Weather Resistant Hospital Grade ●	GFTR15SNAPxxNA GFTR8200SNAPxxNA	GFTR20SNAPxxNA GFTR8300SNAPxxNA

xx=colors: **BK** (Black) **No** (No Suffix) **Brown**, **GY** (Gray), **I** (Ivory), **LA** (Light Almond), **R** (Red) and **W** (White).

SNAPConnect® Right Angle Pigtailed Connector for Use With GFCIs and Receptacles

Clear right angle terminal with 6-inch leads #12 AWG THHN/THWN-2, 600V wire

Housing	Solid Wire	Stranded Wire
Connector for General Use Buy American Compliant	SNAP1RA SNAP1RNA	SNAP2RA SNAP2RNA

SNAPConnect® Specification Grade Toggle Switches Buy American Compliant

Description	15A, 120-277V AC	20A, 120-277V AC
Single Pole 3-Way	SNAP1201xxNA SNAP1203xxNA	SNAP1221xxNA SNAP1223xxNA
Illuminated, Single Pole Illuminated, 3-Way	SNAP1201ILxxNA SNAP1203ILxxNA	SNAP1221ILxxNA SNAP1223ILxxNA
Pilot Light, Single Pole	SNAP1201PLxxNA	SNAP1221PLxxNA

SNAPConnect® Specification Grade Style Line® Decorator Switches Buy American Compliant

Description	15A, 120-277V AC	20A, 120-277V AC
Single Pole 3-Way	SNAP2101xxNA SNAP2103xxNA	SNAP2121xxNA SNAP2123xxNA
Illuminated, Single Pole Illuminated, 3-Way	SNAP2101ILxxNA SNAP2103ILxxNA	SNAP2121ILxxNA SNAP2123ILxxNA
Pilot Light, Single Pole	SNAP2101PLxxNA	SNAP2123PLxxNA

xx=colors: **BK** (Black) **No** (No Suffix) **Brown**, **GY** (Gray), **I** (Ivory), **LA** (Light Almond), **R** (Red) and **W** (White).

SNAPConnect® Right Angle Pigtailed Connector for Switches

Clear right angle terminal with 6-inch leads #12 AWG THHN/THWN-2, 600V wire

Description	Solid Wire	Stranded Wire
Single Pole (3 Wires)	SNAPSP1NA	SNAPSP2NA
Single Pole with Pilot	SNAPSP1NA	SNAPSP2NA
3-Way (4 Wires)	SNAP3W1NA	SNAP3W2NA

Hubbell's Pre-Wired Devices are the perfect solution for those looking to improve installation efficiency through pre-fabricated wiring or pre-assembled system components—significantly reducing the on-site labor associated with the repetitious task of pre-cutting wire leads. Available in several styles of receptacles and switches, Hubbell's Pre-Wired Devices feature factory-installed 8-inch leads for consistent, anti-vibration terminations. Save time and money with Pre-Wired Devices from Hubbell.



- Duplex and decorator styles available in a variety of colors
- Standard, tamper-resistant and weather-resistant GFCIs with LED
- Rocker, heavy-duty toggle, and illuminated switches available
- 8-Inch, factory-installed leads, #12 AWG solid or stranded wire
- Meets federal specification, UL and CSA requirements



Ordering Information

Pre-Wired Commercial Grade Duplex Receptacles

Smooth Nylon Face; Self-Grounding

Description	15A 125V	20A 125V
8" Solid wire leads	CR15xxP1	CR20xxP1
8" Stranded wire leads	CR15xxP2	CR20xxP2
Tamper-Resistant; 8" Solid wire leads	CR15xxTRP1	CR20xxTRP1
Tamper-Resistant; 8" Stranded wire leads	CR15xxTRP2	CR20xxTRP2



Hubbell-Pro™ Pre-Wired Heavy Duty Toggle Switches

Description	15A, 120-277V AC	20A, 120-277V AC
Single Pole	—	1221PWxx
Double Pole	—	1222PWxx
3-Way	—	1223PWxx
4-Way	—	1224PWxx



Pre-Wired Commercial Grade Decorator Receptacles

Smooth Nylon Face; Self-Grounding

Description	15A 125V	20A 125V
8" Solid wire leads	DR15xxP1	DR20xxP1
8" Stranded wire leads	DR15xxP2	DR20xxP2
Tamper-Resistant; 8" Solid wire leads	DR15xxTRP1	DR20xxTRP1
Tamper-Resistant; 8" Stranded wire leads	DR15xxTRP2	DR20xxTRP2



Pre-Wired Specification Grade Toggle Switches

Description	15A, 120-277V AC	20A, 120-277V AC
Single Pole	CSL115xx	CSL120xx
Double Pole	CSL215xx	CSL220xx
3-Way	CSL315xx	CSL320xx
4-Way	CSL415xx	CSL420xx



Pre-Wired LED Heavy Duty GFCI Receptacles

Flush Nylon Face; Auto Grounding Clip

Description	15A 125V	20A 125V
8" Solid wire leads	GF15xxLAP1	GF20xxLAP1
8" Stranded wire leads	GF15xxLAP2	GF20xxLAP2
Tamper/Weather Resistant; 8" Solid wire leads	GF15TRxxLAP1	GF15TRxxLAP1
Tamper/Weather Resistant; 8" Stranded wire leads	GF15TRxxLAP2	GF15TRxxLAP2



Pre-Wired Specification Grade Decorator Series Switches

Description	15A, 120-277V AC	20A, 120-277V AC
Single Pole	DSL115xx	DSL120xx
Double Pole	DSL215xx	DSL220xx
3-Way	DSL315xx	DSL320xx
4-Way	DSL415xx	DSL420xx

Illuminated, Single Pole	—	DSL120xx
Illuminated, 3-Way	—	DSL320xx
Pilot Light, Single Pole, Red LED	—	DSL120PL



xx=CR/DR Receptacle colors: **AL** (Almond), **BK** (Black), No Suffix (Brown), **GY** (Gray), **I** (Ivory), **LA** (Light Almond) and **WHI** (White). GFCI Available in **GY** (Gray), **I** (Ivory) and **W** (White). Consult factory for additional colors.

xx=Toggle/Rocker color: **AL** (Almond), **BK** (Black), No Suffix (Brown), **GY** (Gray), **I** (Ivory), **LA** (Light Almond) and **W** (White). Illuminated available in **I** (Ivory) and **W** (White) only.

Pre-Fabricated Wiring Systems



Rough-In Ready Pre-Fabricated Systems provide a comprehensive solution for delivering installation efficiency. Available with universal mounting brackets, wiring device, plaster ring and protection plate for outlets and conduit, these complete Rough-In Ready assemblies are designed by technical experts to your specification with available numbered drawings for ease of installation and a reduced construction schedule. Each universal mounting bracket accommodates a wide range of wall depths and comes with an integral box attachment that allows for field terminations without the need to reassemble the box and bracket.

- Significantly reduces construction schedule
- Pre-assembled design for maximum quality
- Inspector-ready acceptance
- Reduced packaging and job-site waste
- Matched to design criteria and specifications



Ordering Information

The Complete System

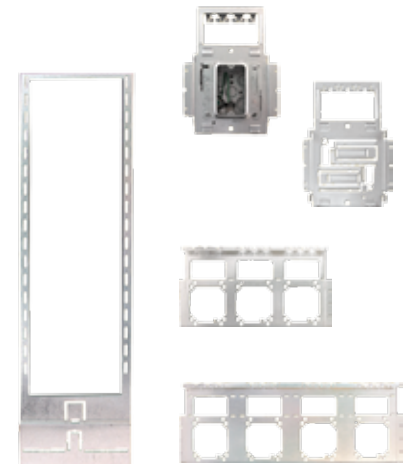
Rough-In Ready provides a UL listed, prefabricated system, complete with wiring devices, protection plates and MC-AP or MC cables cut to length. Rough-In Ready will do the take-off, supply the proposal, build your system, and delivered on time. All systems come with sequentially numbered assemblies and cables that correspond to a detailed layout drawing supplied by our own designers.

Pre-Fab Ready Assemblies

Rough-In Ready patented, UL listed components can be pre-assembled to order, ready for either cable or raceway. Our designers will determine what you need from your project drawings, or you can order your most common assemblies to have them ready for multiple jobs. All assemblies that come with a device installed include the patented Secure-Trim™ adjustment ring to eliminate device rock, and insure a flush finish with the wallplate.

UL Listed Components

All of our Pre-Fab components have unique, cost saving features. All mounting brackets have a built-in first means of cable support and far-side supports adjustable from 2.5" to 6" deep. The feature-rich Rough-In Ready components are available for you to purchase for your own pre-fab shop!



Hubbell's Pre-Wired Raceway Systems save time and money in new construction and retrofits. Especially ideal for deploying power and data in existing buildings, pre-wired raceway is available in aluminum, steel or non-metallic for a variety of applications. Each raceway system is precisely measured, cut, wired, assembled and tested to your specification. Pre-wired raceway from Hubbell can save up to 45% in labor over field installation, helping to keep on schedule and budget, complete jobs faster, and save money.



Project Support and Documentation

- Dedicated local and factory support team
- Assistance defining bills of material and quotes
- Factory engineer assigned to each project

Manufacturing and Testing

- Measured, cut, wired and assembled to specification
- Wiring harnesses bundled and labeled for easy identification
- Fully tested and 100% quality inspected prior to kitting

Fast and Easy Installation

- Kitted, labeled and shipped by room, area or floor
- Completely ready to install upon arrival to job site
- Just secure to wall, make connections, snap on covers and test

Ordering Information

Aluminum Pre-Wired Raceway

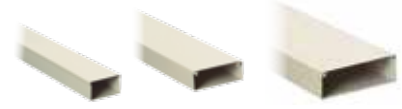
Satin Anodized Finish.



Description	Dimensions
HBLALU3800 Series Single Channel	A: 2.25" (57.15) B: 3.00" (76.20)
HBLALU4800 Series Two Channel	A: 2.25" (57.15) B: 6.00" (152.40)
HBLALU5000 Series Two Channel	A: 1.75" (44.45) B: 5.08" (129.03)
HBLALU7620 Series Three Channel	A: 2.25" (57.15) B: 7.62" (193.55)

Steel Pre-Wired Raceway

Ivory or Gray Finish.



Description	Dimensions
HBL3000 Series Single Channel	A: 1.53" (38.86) B: 2.75" (69.85)
HBL4750 Series Single or 2 Channel (with Divider)	A: 1.75" (44.45) B: 4.75" (120.65)
HBL6750 Series 2 Channel (w/1 divider) 3 Channel (w/2 dividers)	A: 2.22" (56.39) B: 6.75" (171.45)

Also Available UL Listed Modular Pre-Wired Raceway Systems Featuring the Flexibility of LINKOSITY® Connections



Hubbell Pre-Wired Metal Raceway with LINKOSITY® connections is a Hubbell innovation providing a flexible, modular UL Listed System that allows users to relocate furniture and equipment without the need to access the internal wiring of the raceway. The inherent flexibility of this system greatly reduces the cost of installation and future end-user costs associated with re-configuring space.

Non-Metallic Pre-Wired Raceway

Office White Color.



Description	Dimensions
PB2 BaseTrak® Series Single Channel	A: 1.63" (41.40) B: 4.50" (114.30)
PS3 Super BaseTrak® Series, Three Channel	A: 1.97" (50.04) B: 6.70" (170.18)

SystemOne Modular In-Floor System



Hubbell SystemOne has been expanded to include new 6-inch and 8-inch core hole versions. Providing a consistent, attractive and functional solution for in-the-floor or through-the-floor applications. Hubbell SystemOne is extremely easy to use in new construction and renovation projects. The fire-rated poke-throughs include a "stepdown" feature, enabling wiring, installation and removal from the floor above. Sub-plates that easily and efficiently install on SystemOne fire-rated poke-throughs and floor boxes. The modularity of the system allows for extremely economical upgrades and changes in renovation projects.

6-Inch and 8-Inch Core Hole

- Less core holes, more capacity
- Recessed connections
- Flush, durable low profile cover in brushed brass plated, satin nickel plated, oil rubbed bronze plated, brushed aluminum and black powder coat
- Large variety of subplates to accommodate various power and data configurations



4-Inch Core Hole/Floor Boxes

- Multi-service, multimedia and 4x4 applications
- Cast iron, stamped steel and non-metallic floor boxes
- Easily installed and configurable
- Can be used with both floor boxes and poke-throughs, maintaining a uniform look throughout the facility
- Durable black, gray, brass, aluminum and ivory powder coat finishes



Ordering Information

Hubbell SystemOne Flush Fire-Rated Poke-Throughs

Multi-Service Floor Box, Round

PVC	S1PFB
Stamped Steel	S1SFB
Stamped Steel AV	S1SFBV
Cast Iron	S1CFB



4-Inch Poke-Through, 1-Piece

AV	S1PT3IMxxx
Decorator	S1PTxxx
4x4	S1PT4X4xxx
Furniture Feed	S1PTFFxxx

xxx = Finish: **AL** (Aluminum), **BL** (Black), **BRS** (Brass) and **GY** (Gray).



4-Inch Poke-Through Floor Fitting

2-Channel	S1PTFIT
4x4	S1PT4X4FIT
AV	S1PTAVFIT



4-Inch Covers

Description	Carpet	Tile
Cast aluminum construction with a durable powder coat finish	S1CFCxxx	S1TFCxxx

For color options, replace xxx with the following suffixes:



xxx = Finish: **AL** (Aluminum), **BL** (Black), **BRS** (Brass) and **GY** (Gray).

Hubbell SystemOne Recessed Fire-Rated Poke-Throughs

6-Inch Pre-Wired FRPT for Data/AV

(2) pre-wired 20A receptacles with 18" leads plus 2 decorator openings including 2" EMT and 3/4" EMT, (1) flange and cover assembly

S1R6PTWZxxx

6-Inch FRPT for Furniture Feed Applications

(1) 2" EMT, (1) 3/4" EMT, (1) flange and cover assembly

S1R6PTFFxxx

6-Inch FRPT Fitting

6" through floor fitting including 2" EMT and 3/4" EMT

S1R6PTWZxxx

8-Inch Pre-Wired FRPT for Data/AV

(4) pre-wired 20A receptacles with 18" leads plus 3 gangs with 2" EMT for data and AV, (1) flange and cover assembly

S1R8PTZZ3xxx

8-Inch Pre-Wired FRPT for Power

(4) pre-wired 20A receptacles with 18" leads plus 2 gangs with 2" EMT and 1" EMT (1) flange and cover assembly

S1R8PTZZ2xxx

8-Inch FRPT Fitting

8" through floor fitting including 2" EMT for data and AV

S1R8PTFIT3

6-Inch and 8-Inch Covers

Cast aluminum cover with two large hide-away egress doors



6-Inch
S1R6CVRxxx

8-Inch
S1R8CVRxxx

xxx = Finish: **ALU** (Brushed Aluminum), **BLK** (Black Powder Coat), **BRS** (Brushed Brass, Plated), **BRZ** (Oil Rubbed Bronze, Plated) and **NKL** (Satin Nickel, Plated).

Sub-Plates

A large array of power, data and AV sub-plates are available for SystemOne Floor Boxes and FRPTs. Consult local sales team or Hubbell website.



S1R6PTWZALU

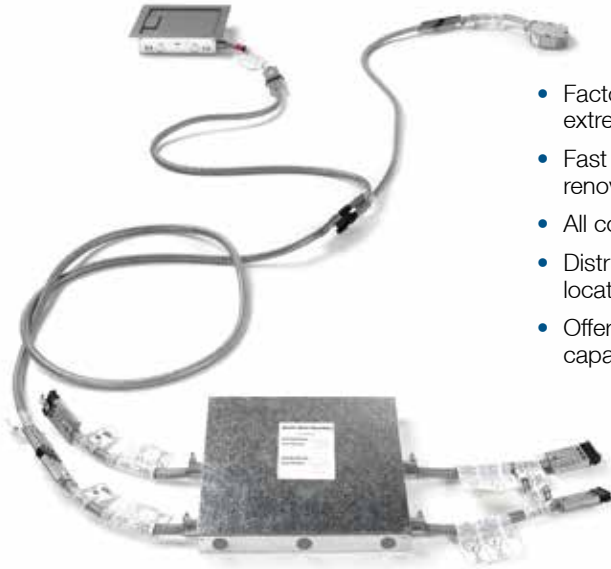


S1R6PTFFALU



S1R8PTZZ3ALU

Hubbell's UL listed Connexion Zone Distribution System is a modular wiring system with plug-and-play installation that saves time and money when delivering power and data to workstations in raised-floor applications, including new construction, office renovations, retail outlets, educational facilities and network operation centers. The system features pre-wired extender cables that create links between the distribution box and points of use, carrying 8 conductors to every point in the zone. With Hubbell Connexion Zone Distribution System, power and communications can be located where needed for efficient relocations and upgrades.



- Factory assembled components for extremely fast installation
- Fast and easy to reconfigure during renovations
- All components are UL listed to UL183
- Distributes power to more than one location from a single feed
- Offers the greatest degree of circuit capacity

Ordering Information

Expandable Zone Distribution Boxes

Description	Catalog Number
4/2/2 System (2+2)	PDCS42222
4/2/2 System (3+1)	PDCS42231
3/3/2 System	PDCS332

Extender Cable

Female To Female	Catalog Number
4/2/2 System	EXT422yyFF8W
3/3/2 System	EXT332yyFF8W

yy = Length: **05** (5 ft.), **10** (10 ft.), **15** (15 ft.), **20** (20 ft.), **25** (25 ft.), and **30** (30 ft.). Custom lengths are available upon request.

Cable Whip

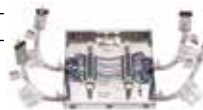
Description	Male To Open	Female To Open
4/2/2 System, 15 in.	EXT42201MO8W	EXT42201FO8W
3/3/2 System, 15 in.	EXT33201MO8W	EXT33201FO8W
4/2/2 System, 5 ft.	EXT42205MO8W	EXT42205FO8W
3/3/2 System, 5 ft.	EXT33205MO8W	EXT33205FO8W
4/2/2 System, 15 ft.	EXT42215MO8W	EXT42215FO8W
3/3/2 System, 15 ft.	EXT33215MO8W	EXT33215FO8W

Splitter Modules

Description	Catalog Number
4/2/2 System	SPLITTER422
3/3/2 System	SPLITTER332

Furniture Feed

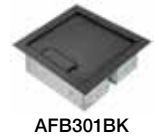
Description	Catalog Number
4/2/2 System	FIJB422
3/2/2 System	FIJB332



Floor Boxes

Description	Catalog Number
4-Gang, deep; metallic cover	AFB301xx
4-Gang, shallow; metallic cover	AFB401xx
8-Gang, deep; metallic cover	AFB501xx
4-Gang, deep; non-metallic cover	HBLAFB101xx
3-Gang power and 1-gang low voltage	AFB801xx

xx = Cover color: **BK** (Black) and **GNT** (Gray)



HBLAFB101BK



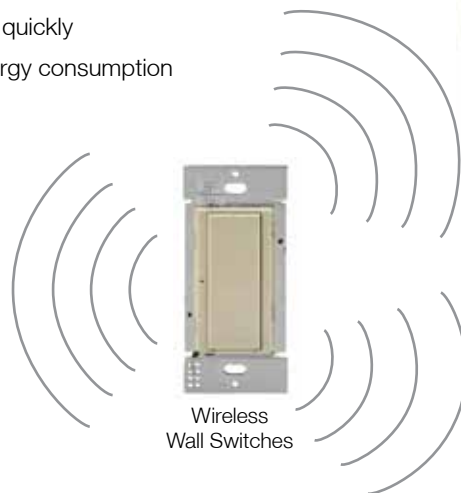
AFB801GNT

WL-Series Wireless Sensors and Controls



Hubbell's WL-Series Wireless Sensors and Controls are the ideal solution for renovation projects aimed at reducing energy consumption. These sensors use DSP Enhanced passive infrared technology to detect movement of heat from people to turn lights on when a room is occupied and off when vacant. The sensors wirelessly transmit commands to the associated control devices, reducing the need for additional wiring for ease and speed of installation and energy savings.

- Eliminates need to run extra wires
- Supports highly reconfigured spaces
- Complete projects quickly
- Helps manage energy consumption



Ordering Information

Wireless Ceiling Mount Sensor

Description	Color	Catalog Number
Ceiling mount 360° - 324-676 ft ²	White	WLP450C

Wireless Wall Mount Sensor

- Detection at longer distances is best when motion occurs at right angles to the sensor.
- Multiple sensors can be used to extend coverage.

Description	Color	Catalog Number
Wall mount 180° - 3000 ft ²	White	WLP3000W

Wireless Corner Mount Wall Sensor

- Detection at longer distances is best when motion occurs at right angles to the sensor.
- Multiple sensors can be used to extend coverage.
- Corner mount bracket included.

Description	Color	Catalog Number
Corner mount - 90° - 2500 ft ²	White	WLP2500W

Wireless Wall Mount Hallway Sensor

- Designed to mount at the end of a hallway with a clear view down the length of a hall.
- Detection at longer distances is best when motion occurs at right angles to the sensor.
- Multiple sensors can be used to extend coverage.

Description	Color	Catalog Number
Hallway - up to 150 linear ft	White	WLP150H

Compatible Controls: WSL1278xx switch, WLC316R control unit, or any Lutron Clear Connect Enabled Control Device.

Wireless Wall Switches

Description	Color	Catalog Number
8A Lighting, 3A Fan (1/10 HP motor, 120V only), Spec Grade Electronic Switch 120-277V, No Neutral Wire Required	Ivory White	WLS1278I WLS1278W
Accessory Switch 120V	Ivory White	WLAS120I WLAS120W
Accessory Switch 277V	Ivory White	WLAS277I WLAS277W

Compatible Transmitters: WLP series and WLDH sensors any Lutron Clear Connect Enabled Sensor.

Wireless Control Unit

Description	Catalog Number
Wireless load control unit with isolated relay	WLC316R

Compatible Transmitters: WLP series and WLDH sensors any Lutron Clear Connect Enabled Sensor.

Wireless Daylight Sensor

Description	Color	Catalog Number
Daylight sensor 0-107,000 Lux (0-10,000 fc)	White	WLDH

Compatible Controls: WSL1278xx switch, WLC316R control unit, or any Lutron Clear Connect Enabled Control Device.

With less parts to order and assemble, Hubbell's iFRAME® network hardware management system gets your data center and telecommunications rooms up and running faster. The iFRAME® features strong I-beam columns that simply bolt to the floor every two feet, quickly resulting in an EIA-310-E-Compliant rack to mount a full complement of network gear. With integrated grounding and bonding, power distribution and cable management, the iFRAME® system offers a total integrated solution. It is also designed to align with the raised floor and dropped ceiling grid to further simplify installation.



- Significantly less parts to assemble provides 10-15% more rack space
- Aligns with floor and ceiling grid
- Easy to install—simply bolt to the floor and install top plate
- Each additional column in the row forms an EIA-310-D rack
- Covers hinge to both left and right for ease of use
- Provides superior cable management
- 1400 lb load capacity
- Can be configured into a 4-post frame for data center requirements



Ordering Information

iFRAME® Column

Contents: (1) iFRAME® column weldment, (1) bottom alignment installation aid and (1) iFRAME® top plate floor template, (1) full height front cover with (4) heavy-duty floor anchor washers dual-acting hinges and (2) dual-acting front cover hinges (not included in IS7E), (20) #12-24 x 5/8" dog point machine screws, (4) 4" gates (Catalog No. VCG4) and washers, (12) snap-in-place cable routing spools, and (1) assembly hardware kit

Rack Units	Height Inches (mm)		Width In. (mm)	Rail Depth In. (mm)	Overall Depth In. (mm)	Hole Type	Color	Catalog Number
	Overall	Usable						
Use: Without Raised Floor								
45	84" (2134)	78.8" (2002)	5" (13)	3" (8)	14.17" (360)	12-24 Threaded	Black	IS7
45	84" (2134)	78.8" (2002)	10" (25)	3" (8)	14.17" (360)	12-24 Threaded	Black	IS710
Use: Square Holes with Cage Nuts								
45	84" (2134)	78.8" (2002)	5" (13)	3" (8)	14.17" (360)	Square	Black	IS7M6
45	84" (2134)	78.8" (2002)	10" (25)	3" (8)	14.17" (360)	Square	Black	IS7M610
Use: As the Rear Columns in 4-Post Applications								
45	84" (2134)	78.8" (2002)	5" (13)	3" (8)	14.17" (360)	12-24 Threaded	Black	IS7E

Note: Order two columns for the first rack in a line, then order only one column for each additional rack.

Category 6A Rear Cable Management Kit

Contents: 12" W x 6' L ladder rack sticks (Catalog No. HLS0612B), 12" W x 24" L iFRAME® top ladder, 27" W x 24" L iFRAME® top ladder, wall mounting kit (Catalog No. HLX0612), T-splice kit (Catalog No. HLTK) and mounting brackets

Color	Catalog Number
Black	ICKC

Top Ladder Rack

Color	Ladder Dimensions	Stringer Dimensions	Catalog Number
Black	2" H x 12" W	1 1/2" x 3/8"	ICKL



IS7
Shown: door open, door closed



ICKL

BIDnet Pre-Terminated Trunk Assemblies



Hubbell's Assemble-to-Order Cable Assembly Program delivers custom copper and fiber assemblies with short lead times to help you get your data center up and running faster than ever. Available in custom lengths, configurations and colors, in Category 5e or 6A, 25-pair, or multi-configured fiber trunk cables, BIDnet Pre-Terminated Trunk Assemblies fit virtually any data center or network application. With 70% less installation time and 100% factory terminated and tested, BIDnet ensures installation efficiency, peace of mind and reduced job-site waste.

- High performance, short lead time
- Custom lengths for reduced waste and faster deployment
- Substantially reduces installation time
- 100% factory terminated and tested for maximum reliability
- Labeled at each end for easy moves, adds, and changes
- Less on-site packing waste



Pre-Terminated Copper Trunk Assemblies



Pre-Terminated Fiber Trunk Assemblies

Ordering Information

Copper Assemblies

Lengths: 10'–295'
 Legs: 1, 4 and 6
 Category: 5e, 6 and 6A
 Connection: RJ45 jack; RJ45 plug; open end
 Cable: Plenum, riser and LSZH
 UTP: Category 5e; Category 6; Category 6A
 FTP: Category 6 (10G Base-T)
 Color: Blue and white



Jack to Open



Jack to Plug



Jack to Jack

Transition Assemblies

Connectors: MTP female to LC or SC duplex
 Fiber types: 50/OM3, 50/OM4, SM/OS2
 Fiber strand count: 12, 24 and 48 fibers
 Cable: plenum, riser, or LSZH (armored or non-armored)
 Polarity: TIA-568C.3, Type A,B or C



Distribution Fan-Out Trunks and Pigtails

Connectors: LC, MSFP, keyed LC, SC, SC/APC, ST, FC, FC/APC
 Fiber types: 62/OM1, 50/OM2, 50/OM3, 50/OM4, SM/OS2
 Fiber strand count: 6, 12, 24, 48, 72, 96
 Cable: plenum, riser, or LSZH (armored or non-armored)
 Fan-out: 2.0mm furcation tubing



Mesh Bundle Trunks (2.0mm Duplex Zip Cord)

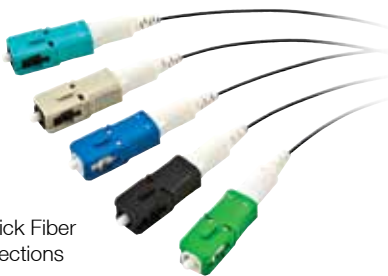
Connectors: LC, MSFP, keyed LC, SC, SC/APC, ST, FC, FC/APC
 Fiber types: 62/OM1, 50/OM2, 50/OM3, 50/OM4, SM/OS2
 Fiber strand count: 6, 12, 24, 48, 72, 96
 Cable: plenum, riser, or LSZH
 Outer sheath: polyester mesh



Factory terminated with MPO multi-fiber fanouts, Hubbell Pre-Terminated MPO Optical Cassettes snap easily into most Hubbell fiber patch panels, enclosures or cabinets. MPO cassettes and cords provide a flexible, rapid deployment fiber infrastructure solution. Available factory assembled MPO-to-MPO 12-fiber cables with attached pulling grip enable easy pulls through pathways and conduit. For reliable fiber terminations in less than one minute, Hubbell PROclick® Pre-Polished SC and LC Fiber Connectors feature a pre-installed cleaved fiber with an index-matching splice mechanism and a precision factory pre-polished ferrule.



MPO Cassettes



PROclick Fiber Connections

MPO Cassettes

- Compact design saves space
- Factory-terminated, 100% optically tested for low-loss, reliable performance
- Available in multimode and singlemode with 10 Gig Ethernet
- SC, ST, LC and MT-RJ versions available

PROclick Fiber Connections

- Typically Terminates in less than one minute
- Precision low-loss factory polished
- No adhesives or field polishing required
- Proven fiber clamping method with stable performance
- RoHS compliant and bulk packed in recyclable boxes



Ordering Information



MPO 12-Fiber Cassette

Fiber Type	Color	SC Duplex	ST-Style	LC Duplex 12F	LC Duplex 24F*	LC Quad 24F*	MT-RJ
50µm, OM2	Black	OCSC50	OCST50	OCLC50	OCLCD50	OCLCQ50	OCRJ50
50µm, OM3	Aqua	OCSC50G	-	OCLC50G	OCLCD50G	OCLCQ50G	OCRJ50G
50µm, OM4	Aqua	-	-	OCLC50G4	OCLCD50G4	OCLCQ50G4	-
62.5µm, OM1	Beige	OCSC62	OCST62	OCLC62	OCLCD62	OCLCQ62	OCRJ62
SM, OS2	Blue	OCSCSM	OCSTSM	OCLCSM	OCLCDSM	OCLCQSM	-

*24 fibers, 2-12 fiber MPO connectors in rear.

PROclick® LC Pre-Polished Connectors

Fiber Type	Cable Type	Color	12 Pack**
50µM, OM3	900/250 µM	Aqua	FCLC900K50GM12
50µM, OM2	900/250 µM	Black	FCLC900K50M12
62.5µM, OM1	900/250 µM	Beige	FCLC900K62M12
SM, OS2	900/250 µM	Blue	FCLC900KSM12

**Also available in 100 pack. To order, replace the 12 suffix with 100.

PROclick® SC Pre-Polished Connectors

Fiber Type	Cable Type	Color	12 Pack**
50µM, OM3	900/250 µM	Aqua	FCSC900K50GM12
50µM, OM2	900/250 µM	Black	FCSC900K50M12
62.5µM, OM1	900/250 µM	Beige	FCSC900K62M12
UPC SM, OS2	900/250 µM	Blue	FCSC900KSM12
APC SM, OS2	900/250 µM	Green	FCSC900KASM12

**Also available in 100 pack. To order, replace the 12 suffix with 100.

2Click® ST Pre-Polished Connectors

Fiber Type	Cable Type	Color	12 Pack
50µM, OM3	900/250 µM	Aqua	FCST50GM12
50µM, OM2	900/250 µM	Black	FCST50M12
62.5µM, OM1	900/250 µM	Beige	FCST62M12
SM, OS2	900/250 µM	Blue	FCSTSM12

Tools

Description	Catalog No.
Fiber Cleaver Single fiber multimode, cleave tool	OFCLV3
Fiber Cleaver Singlemode, tool kit with case	OFCLV5
Visual Fault Locator (ST, SC, LC)	OFVFLKT1



X-END and One Punch Tool



Installation efficiency at the work area is critical in today's facilities that can contain several thousands of connections to support data, voice and AV applications. Hubbell's Plug-n-Play X-End AV Solution uses pre-terminated assemblies and a locking connections that save valuable installation and testing time. The patch cords and tails are easily swapped out as requirements in horizontal cabling runs. For quick, efficient punching down all four pairs of a voice/data jack, the Hubbell 1-Punch Tool saves valuable installation time over traditional single-blade tools.

X-END Plug-n-Play

- Overmolded connections with locking interface ensure mated connection
- Designed for minimal signal loss for superior audio and video
- Support multiple applications and connector configurations
- Plug-n-play design saves installation and testing time

HDMI 110 UTP Extender

- Utilizes UTP cabling (Cable is already on site)
- Customize lengths on site (No pre-ordering cable assemblies)
- Integrates into all Hubbell workstation and delivery products

One Punch Tool

- Reduces termination time by 75%
- Consistent, reliable termination every time
- Punches all 4 pairs and cuts off excess wire in one punch



X-END Plug-n-Play



HDMI 110 UTP Extender



One Punch Tool

Ordering Information

Hubbell iSTATION HDMI 110 UTP Extenders

Description	DC	Installation Decorator	Module
110 UTP HDMI extender (pair)	5 Volt	2 4-pair	ISFH110xx IMH1102xx

xx = Color: **BK** (Black), **EI** (Electric Ivory), **GY** (Gray), **OW** (Office White), and **W** (White).



AV Plug-n-Play X-END Horizontal Cable Runs, Male, Black

Description	Catalog Number
Non-Plenum, 8-pin	VGA6yyBK
Plenum, 8-pin	VGA6PyyBK
Non-Plenum, 8-pin, with 3.5mm	VGA36yyBK
Plenum, 8-pin, with 3.5mm	VGA36PyyBK

yy = Length: **15** (15 ft), **25** (25 ft), **35** (35 ft), **50** (50 ft), **75** (75 ft), and **100** (100 ft). Contact Hubbell customer service for custom lengths, minimum quantities and lead times may apply.



VGA Plug-n-Play X-END Connections



Quantity	15-Pin (F) to 8-Pin (F)				15-Pin (M) to 8-Pin (M) 8" Tail	
	Straight 180°	Angled 45°	Angled 90°	8" Tail	Non-Plenum	Plenum
1-Pack	15S6P1	15A6P1	15N6P1	15T6P1	15M6P1	15MP6P1
10-Pack	15S6P10	15A6P10	15N6P10	15T6P10	15M6P10	15MP6P10

1-Punch Tool for XCELERATOR Jacks

Description	Catalog Number
1-punch Ascent HJ tool with head, blades and HXTA termination aid	TX4P6A
1-punch XJ tool with head, blades and HXTA termination aid	TX4P
Hand termination aid "Jack Knuckles" Xcelerator/Ascent	HXTA
Snap-X termination puck (bag of 25)	HXTP25
Ascent termination puck (bag of 25)	HJTP6A25

1-Punch Tool for P6E and P6A Series Patch Panels

Description	Catalog Number
Patch Panel tool with head and blades	TX4PP

Replacement heads and blades are available. Hubbell Xcelerator jacks are compatible with Paladin Tools® "Jack Terminator" PA8111 termination tool.



TX4P

HXTA

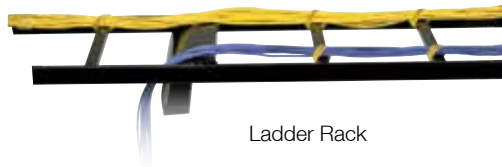


TX4PP



HXTP25

Hubbell's NEXTFRAME family of Cable Management Products are the ideal solution for high density cabling requirements in data centers and telecommunication rooms. From horizontal and vertical cable managers, to ladder rack and basket tray, all NEXTFRAME cable management products are designed to provide maximum installation efficiency. Horizontal and vertical cable managers are extremely modular and snap easily together, while ladder rack mounts easily to floors, walls, ceilings, racks and cabinets. For overhead or underfloor applications, Hubbell Wire Mesh Basket Tray provides substantial cable capacities and an economical cable solution.



Ladder Rack



Wire Basket Tray

Basket Tray:

- "Flat" style design significantly reduces stress on cables laying in bottom of tray
- Easy to install
- Field fabricated fittings
- Complete offering of supports, splice hardware and accessories
- Available finishes: Pre-galvanized
Powder coat paint: Black and pewter
Stainless steel



Ordering Information

Ladder Rack Straight Section

Width Inches (mm)	6 Foot (1829) Length		10 Foot (3048) Length	
	Black	Gray	Black	Gray
6" (152)	HLS0606B	HLS0606G	HLS1006B	HLS1006G
12" (305)	HLS0612B	HLS0612G	HLS1012B	HLS1012G
18" (457)	HLS0618B	HLS0618G	HLS1018B	HLS1018G
24" (610)	HLS0624B	HLS0624G	HLS1024B	HLS1024G

Note: Please order straight sections in multiples of 10 pieces. Width = outside to outside dimensions.



Hubbell Basket Tray Catalog Numbers:

HBT ___ ___ (add suffix letter "S" for shaped/flat style wire design)
Depth Width

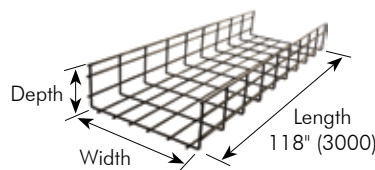
Available Depths (inches):	Available Widths (inches):
02	04
04	06
06	08
08	12
	16
	18
	20
	22
	24

Standard finish is "pre-galvanized".
Add suffix "BK" for powder coated black paint finish.
For additional hardware and accessories contact Hubbell.



Round Style Shaped/Flat Style
Cross sectional view of cross wires.

Shaped cross wires have more surface area and significantly reduces pressure and strain on cables.



Ceiling Support

Width Inches (mm)	Catalog Number
12" (305)	HBTWGSP12
16" (406)	HBTWGSP16
18" (457)	HBTWGSP18
20" (508)	HBTWGSP20
24" (610)	HBTWGSP24



Accessories

Description	Catalog Number
Splice kit	HBTSK
Corner splice	HBTCS





When it comes to ensuring efficient maintenance, repair and operation for maximum productivity in manufacturing facilities, Hubbell Industrial Solutions combine plug-and-play connections with safety to ensure rapid and safe equipment replacements and simple reconfigurations of machinery. Ideal for switching of PLCs and electronic drive systems, Hubbell Circuit-Lock® Disconnect Switch features auxiliary contacts that are factory installed and ready for wiring. MotorQuick®, quick disconnect switches are pre-wired to work with the Linkosity® plug-n-play power distribution system, are reducing motor replacement time by more than 60%.

Circuit-Lock® Disconnects

- UL listed as a motor controller and also "suitable as a motor disconnect"
- Meets NEC line-of-sight requirements for maximum safety
- Highly visible lockable handle meets OSHA lockout/tagout regulations
- Type 4X enclosure is molded of rugged Valox® to resist abuse, corrosion and enhance safety



Circuit-Lock® Disconnects

Motor-Quick®

- Enables faster installation and replacement of motors
- Pre-wired with Linkosity® components
- Easily retrofits to existing hard-wired installations using Linkosity®



MotorQuick®

Linkosity®

- Plug-n-play wiring with reconfigurable distribution components. Fast installation for 20A and 30A circuits up to 600V
- Labor-savings alternative to conventional wiring
- Cables are UL Type PC-ER with crush and impact resistance for maximum safety



Linkosity®

Ordering Information

Circuit-Lock® Unfused Disconnect Switches



Description	Catalog Number
30A disconnect switch	HBLDS3
30A disconnect switch with one HBLAC1 auxiliary contact	HBLDS3AC
60A disconnect switch	HBLDS6
60A disconnect switch with one HBLAC1 auxiliary contact	HBLDS6AC
100A disconnect switch	HBLDS10
100A disconnect switch with one HBLAC1 auxiliary contact	HBLDS10AC

Auxiliary Contacts for 30, 60 and 100A Switches



Description	Catalog Number
Auxiliary contacts, "break after main break" 1 set of n/o and n/c contacts	HBLAC1
Auxiliary contacts, "break before main break" 1 set of n/o contacts	HBLAC2

Power Components Cables and Receptacles 20A, 30A up to 600V



Device Type	Ratings	Wires	Conductor Color**	Length (ft.)
PH Double Ended Cable - Male/Female Straight	20 20A up to 600V	02 - PA	Green/Yellow; Black (all others)	001 1'
PM Male Single Ended Straight		05		005 5'
PN Male Single Ended 90°				010 10'
PF Female Single Ended Straight	23 20A up to 600V Specialty construction (Includes isolated ground on 6 wire and 10AWG super neutral conductor on 5 and 6 wire devices)	03	White	015 15'
PG Female Single Ended 90°		04		020 20'
PQ Double Ended Cable with Female 90°		05		025 25'
PR Double Ended Cable with Male 90°	30 30A up to 600V	06	Black (all others)	030 30'
PS Double Ended Cable with (2) 90° Connectors				035 35'
RF Female Receptacle; 1/2" N.P.T. rear thread				040 40'
RM Male Receptacle (Inlet); 1/2" N.P.T. rear thread			**other color codes available upon request	045 45'
				050 50'

Example Catalog Number: **PH2306PB05**

Type 1; 30A 3 Pole 600V AC

Description	with HBL1389D	with HBLDS3
(1) pre-wired LINKOSITY® female receptacle (load side)	HBL1389MQR	HBLDS3MQR
5 ft. pre-wired LINKOSITY® female cable (load side)	HBL1389MQ5	HBLDS3MQ5
(1) pre-wired LINKOSITY® male receptacle (line side) and (1) pre-wired LINKOSITY® female receptacle (load side)	HBL1389MQR2	HBLDS3MQR2



The NEC requires a separate disconnect means within sight of all motors. Hubbell's easy-to-install Mechanical Interlock devices eliminate making or breaking the circuit under load, are suitable as motor disconnects, and meet OSHA lockout/tagout regulations. The IEC Mechanical Interlock is easy to install with a pre-wired pin and sleeve receptacle, adjustable mounting feet and DIN rail mounted switch. The Insulgrip® Twist-Lock® Mechanical Interlock Enclosure accepts any 20A or 30A Watertight Safety-Shroud Receptacle and provides a simple, compact, low profile and watertight installation.

IEC Mechanical Interlocks



Insulgrip® Twist-Lock® Mechanical Interlock

IEC Mechanical Interlocks

- Easy installation with multiple mounting options and pre-wired receptacle
- Eliminates making or breaking circuit under load for safe connections
- Highly visible red handle complies with OSHA lockout/tagout requirements
- Certified as a manual motor controller and suitable as a disconnect

Insulgrip® Twist-Lock® Mechanical Interlock

- Heavy-duty internal frame bonds conduit and all grounds
- Easily accepts auxiliary contacts for various control circuit applications
- Offset premolded conduit entry protects components and speeds installation by making it easier to pull conductors



Ordering Information



IEC Watertight Pin and Sleeve

Rating Color Coded by Voltage	Poles/Wires	Mechanical Interlock
20A 3Ø 480V	3P 4W	HBL420MI7W
30A 3Ø 250V	3P 4W	HBL430MI9W
30A 3Ø 480V	3P 4W	HBL430MI7W
30A 3Ø 600V	3P 4W	HBL430MI5W
30A 3ØY 277/480V	4P 5W	HBL530MI7W
60A 3Ø 250V	3P 4W	HBL460MI9W
60A 3ØY 120/208V	4P 5W	HBL560MI9W
60A 3Ø 480V	3P 4W	HBL460MI7W
60A 3Ø 600V	3P 4W	HBL460MI5W
100A 250V	3P 4W	HBL4100MI9W
100A 3ØY 120/208V	4P 5W	HBL5100MI9W
100A 3Ø 480V	3P 4W	HBL4100MI7W
100A 3Ø 600V	3P 4W	HBL4100MI5W

For mating plug, replace MI with P. Ex. **HBL420MI7W** (mechanical interlock) to **HBL420P7W** (mating plug).

Twist-Lock® Mechanical Interlock

Description	Ratings	Catalog Number
Mechanical Interlock accommodates 20A or 30A Watertight Safety-Shroud Twist-Lock receptacles.	Amperage and voltage ratings will be determined by the choice of the Watertight Safety-Shroud Twist-Lock selected. Supplied with ¼" N.P.T. Hub.	HBLMITL



Accepts the following Watertight Safety-Shroud® Twist-Lock® Receptacles

Rating	Voltage AC	NEMA	Max HP Rating	Receptacle Catalog Number
20 Amp	120	L5-20	1	HBL2310SW
2 Pole, 3 Wire	208-240 277	L6-20	2.5	HBL2320SW
		L7-20	3	HBL2330SW
		20 Amp	120/240	L14-20
3 Pole, 4 Wire	240 3Ø 480 3Ø	L15-20	5 (3@208V)	HBL2420SW
		L16-20	10	HBL2430SW
		20 Amp	120/208 3ØY	L21-20
4 Pole, 5 Wire	120	L5-30	1	HBL2610SW
		L6-30	3	HBL2620SW
30 Amp	120/240 240 3Ø 480 3Ø	L14-30	3	HBL2710SW
		L15-30	7.5	HBL2720SW
		L16-30	15	HBL2730SW
30 Amp	120/208 3ØY 277/480	L21-30	7.5	HBL2810SW
		L22-30	7.5	HBL2820SW
		L23-30	7.5	HBL2830SW



Ideal for quickly delivering power when and where it's needed, Hubbell's Industrial Cord Reels eliminate unmanaged cords and cables that can cause trip hazards and or risk of electric shock. They feature a plug-in 5 foot power cord that requires no electric wiring, a multi-position guide arm to position the cable where it's needed, and a positive-latch mechanism to automatically maintain desired cord length. Available with a variety of connector types and lighted lamp ends, the cord reels can be easily wall, ceiling or bench mounted. An available pivot base provides a full 340° rotation.

- Provides safe, convenient power for demanding industrial environments
- All steel construction can easily be ceiling, wall or bench mounted
- Keeps cords organized, saving time and money and improving safety
- Durable and corrosion resistant for long term performance and savings
- Available with LED, fluorescent or incandescent light
- Durable, corrosion resistant steel construction with yellow powder coat finish



Industrial Cord Reels



Lighted Cord Reels

Ordering Information

Industrial Power Cord Reels

Cord End	Cable Feet (m)	Cable Type	Weight Lbs. (kg)	15A 125V Catalog Number	20A 125V Catalog Number
HBL5269C 15A connector/ HBL5369C 20A connector	45 (13.7)	12/3 SJEO	23 (10.4)	HBL45123C	HBL45123C20
Portable duplex outlet box; gray duplex	45 (13.7)	12/3 SJEO	29 (13.2)	HBL45123R	HBL45123R20
Portable duplex outlet box; gray GFCI duplex	45 (13.7)	12/3 SJEO	29 (13.2)	HBL45123GF15	HBL45123GF20
HBL2313 20A connector	45 (13.7)	12/3 SJEO	23 (10.4)		HBL45123TL20
Pivot Base 340° rotation	-	-	5 (2.3)	HBL340PB	



HBL45123TL20

Industrial Lighted Cord Reels, 50 Ft. (15.2m) - 16/3 AWG SJEO Cable

Cord End	Watts (Max)	Amps	Volts AC	Weight Lbs. (kg)	Catalog Number
LED hand lamp, with end light	4 + 1	0.17	120	21 (9.5)	HBL50162LED
Fluorescent hand lamp	13	0.3	120	21 (9.5)	HBL50162FL
Incandescent hand lamp	100	0.8	125	21 (9.5)	HBL50163IN

Note: Supplied with 5 ft. power supply cord with HBL5266C, 15A straight blade plug.



HBL50162LED

Accessories

Description	Watts (Max)	Amps	Volts AC	Weight Lbs. (kg)	Catalog Number
Pivot Base 340° rotation	-	-	-	5 (2.3)	HBL340PB
Replacement stop	-	-	-	.2 (.09)	HBL16BS
Replacement LED hand lamp	4 + 1	0.17	120	1 (.5)	HBL16LEDR
Replacement fluorescent hand lamp	13	0.3	120	1 (.5)	HBL16FLR
Replacement incandescent hand lamp	100	0.8	125	1 (.5)	HBL16INR



HBL340PB

Protecting electrical circuitry on the factory floor helps improve safety and prevents mechanical damage to maintain ongoing operations. Used between disconnect switches and equipment in industrial environments, Hubbell PolyTuff® Non-Metallic Conduit and Fittings provide superior flexibility and outstanding corrosion resistance while offering fast and easy installation. With a range of available conduit sizes, PolyTuff® can easily make tight turns and includes a variety of straight and multi-angle, SwivelLok® Connectors.



PolyTuff® Non-Metallic Liquidtight Conduit and Tubing



PolyTuff® Non-Metallic Liquidtight Fittings

- All non-metallic construction ends metal fatigue and separation problems
- Cuts cleanly with a knife or PVC cutter so there are no jagged edges
- Available with rigid PVC core PolyTuff® I or flexible corrugated wall PolyTuff® II
- SwivelLok® nylon two-piece swivel body twists 0° to 90°
- Neoprene O-ring ensures liquidtight seal at hub
- Non-integral ferule provides seal and pullout protection



Ordering Information

PolyTuff I® Conduit and PolyTuff II® Tubing



Trade Size (metric designator)	Feet (m)	PolyTuff I Conduit	PolyTuff II Tubing
¼ (10)	100 (30.5)	-	B2025
⅜ (12)	100 (30.5)	G1038	B2038
½ (16)	100 (30.5)	G1050	B2050
¾ (21)	100 (30.5)	G1075	B2075
1 (27)	100 (30.5)	G1100	B2100
1¼ (35)	100 (30.5)	G1125	B2125
1½ (41)	50 (15.2)	G1150	B2150
2 (53)	50 (15.2)	G1200	B2200

Fixed 90° Fittings for Non-Metallic Conduit



Trade Size (metric designator)	Black	Gray
¼ (6)	F20259	-
⅜ (9)	P0389NBK	P0389NGY
½ (13)	P0509NBK	P0509NGY
¾ (19)	P0759NBK	P0759NGY
1 (25)	P1009NBK	P1009NGY
1¼ (32)	P1259NBK	P1259NGY

Straight with Male Non-Metallic Fittings for Non-Metallic Conduit



Trade Size (metric designator)	Black	Gray
¼ (6)	F2025	-
⅜ (9)	P038NBKA	P038NGYA
½ (13)	P050NBKA	P050NGYA
¾ (19)	P075NBKA	P075NGYA
1 (25)	P100NBKA	P100NGYA
1¼ (32)	P125NBK	P125NGY
1½ (38)	P150NBK	P150NGY
2 (51)	P200NBK	P200NGY

SwivelLok® Flexible Conduit Kit



Trade Size (metric designator)	Fitting and Conduit Kit	Catalog Number
½ (13)	(2) PS0509NGY,	PS05GYKIT
¾ (19)	6' G1050	
	(2) PS0759NGY,	PS07GYKIT
	6' G1075	

SwivelLok® Multi-Position with Male Non-Metallic Liquidtight Fittings



Trade Size (metric designator)	Black	Gray
⅜ (9)	PS0389NBK	PS0389NGY
½ (13)	PS0509NBK	PS0509NGY
¾ (19)	PS0759NBK	PS0759NGY
1 (25)	PS1009NBK	PS1009NGY

HUBBELL® INSTALLATION EFFICIENCY

Wiring Device Solutions

Hubbell Application Guides



Hubbell Healthcare Application Guide

Healthcare Brochure featuring Hospital Grade Plugs, Connectors, Receptacles and more.



Hubbell Education Application Guide

Education Application Guide to assist education facility managers and engineers in identifying and deploying wiring devices for power, data, voice and multimedia in a variety of education spaces and applications.



Hubbell Safety Brochure

Hubbell has always been focused on safety. That's why Hubbell products are designed and developed to first provide maximum safety against injury and the potential dangers of electricity.



Hubbell Data Center Brochure

Data Center Solutions Guide assists data center professionals in identifying, specifying and deploying Hubbell Data Center Solutions to improve space utilization, reduce on-site labor, lower start-up costs and ensure a reliable network cabling infrastructure.



Scan for more information on Hubbell's Product for Installation Efficiency Solutions

Hubbell Energy Efficiency Solutions



Sensors

Reduce energy consumption in a wide variety of commercial, residential and industrial applications with Hubbell lighting controls and sensors.

Hubbell's sensors facilitate compliance with the latest building codes and standards, including ASHRAE/IESNA 90.1, CECs Title 24, and help obtain LEED® points.



Commercial Electric Vehicle Charging Stations

PEP Stations (EVSEs) are exclusively represented by Hubbell. EVSEs are an ideal fit commercial property electric vehicle charging requirements. Their distinctive styling provides property owners with a design that is complimentary to building architecture and supports a commitment to reducing emissions.



Power Strips

Hubbell's SpikeShield® Energy Saving Surge Protective Devices (ESPS Series) reduce power consumption by eliminating phantom power draw of unused electronics and appliances.

Hubbell offers a complete offering of power strips in a various levels of outlet configurations and surge protection.

Literature Support

Hubbell offers an extensive literature library for product support. Downloadable PDFs are available online at www.hubbell-wiring.com under the media tab.

HUBBELL®
Wiring Systems

www.hubbell-wiring.com
www.hubbell-premise.com



Hubbell Wiring Device-Kellems
Hubbell Incorporated (Delaware)
40 Waterview Drive, Shelton, CT 06484
Phone (800) 288-6000 • FAX (800) 255-1031

Hubbell Premise Wiring
Hubbell Incorporated (Delaware)
23 Clara Drive, Suite 103, Mystic, CT 06355
Phone (800) 626-0005 • FAX (860) 535-8328