

Stainless Steel Cord Reels

Stainless cord reels are better suited in applications where corrosion or sanitation are a concern. The heavy gauge 304L stainless provides an excellent finish and superior corrosion resistance. Models listed are for indoor, non-weathertight applications such as, food/chemical processing, pharmaceutical and water treatment facilities.

Benefits

- **Suitable for Clean Environments** - Stainless steel is easy to sanitize/clean.
- **Quiet** - These reels utilize a cam latching system, making them much quieter and smoother than other reels in their class.
- **Compact** - A space saving design makes them ideal for minimum space requirements.
- **Superior Strength** - A robotically welded base, engineered structural supports and high-grade industrial stainless steel combine to give this reel superior strength and stability.



Features

- 304L grade stainless steel
- Quiet speed latching mechanism
- Adjustable guide roller - multi-position
- 4 foot line cord
- 45 ft. of #12/3 SJEO cable

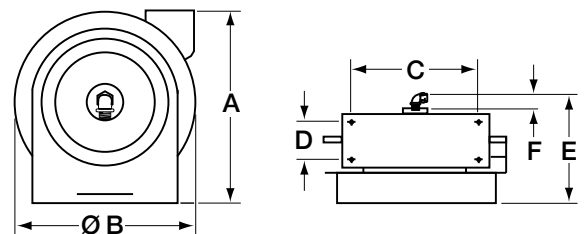
Stainless Steel Cord Reels

Description	Cable Feet (m)	Cable Type	Amps	Volts	Weight Lbs. (kg)	Catalog Number
Stainless Steel Reel without cord ends.	45 (13.7)	#12/3 SJEO	20	125	30 (14)	HBLSS45123

Note: For indoor non-weathertight applications only.

Dimensions Inches (mm)

	A	B	C	D	E	F
Inches	14.50"	13.50"	9.75"	2.50"	10.50"	2.125"
(mm)	(368)	(343)	(248)	(64)	(267)	(54)



Related Products (See Back Page)

Hubbell offers a comprehensive line of hose, cord and cable reels for almost every application. For more information visit us online at www.hubbell.com

Industrial Power Cord Reels

- Durable, corrosion resistant steel construction design with yellow or white powder coat finish
- Multi-position guide arm
- Positive-latch mechanism automatically maintains desired cord length
- 12 AWG cord for greater current carrying capacity
- Plug-in 5 ft. long power cord requires no electrical wiring



HBL45123TL20

Industrial Power Cord Reels

Cord End	Cable Feet (m)	Cable Type	NEMA Style	Amps	Volts AC	Weight Lbs. (kg)	Catalog Number
Without cord ends.	50 (15.2)	#16/3 SJ	—	10	125	20 (9.1)	HBL50163
Without cord ends.	45 (13.7)	#12/3 SJ	—	20	125	21 (9.5)	HBL45123
HBL5269C connector.	45 (13.7)	#12/3 SJ	5-15R	15	125	28 (12.7)	HBL45123C
HBL5369C connector.	45 (13.7)	#12/3 SJ	5-20R	20	125	28 (12.7)	HBL45123C20 HBL45123C20W
HBL2313 connector.	45 (13.7)	#12/3 SJ	L5-20R	20	125	28 (12.7)	HBL45123TL20 HBL45123TL20W
Portable outlet box with (1) gray duplex receptacle.	45 (13.7)	#12/3 SJ	5-15R	15	125	29 (13.2)	HBL45123R HBL45123R20 HBL45123R20W
Same as above except white.	45 (13.7)	#12/3 SJ	5-20R	20	125	29 (13.2)	HBL45123R20WM1
Black portable outlet box with (1) gray duplex receptacle, white reel housing.	45 (13.7)	#12/3 SJ	5-20R	20	125	29 (13.2)	HBL45123R220 HBL45123R220W
Portable outlet box with (2) gray duplex receptacles.	45 (13.7)	#12/3 SJ	5-20R	20	125	29 (13.2)	HBL45123R220WM1
Same as above except white.	45 (13.7)	#12/3 SJ	5-20R	20	125	29 (13.2)	HBL45123R220WM1
Black portable outlet box with (2) gray duplex receptacles, white reel housing.	45 (13.7)	#12/3 SJ	5-15R	15	125	29 (13.2)	HBL45123GF15 HBL45123GF20 HBL45123GF20W
Portable outlet box with (1) ground fault protected gray duplex receptacle.	45 (13.7)	#12/3 SJ	5-20R	20	125	29 (13.2)	HBL45123GF220WM1
Same as above, with white reel housing.	45 (13.7)	#12/3 SJ	5-20R	20	125	25 (11.3)	HBL45123GF220WM1
Black portable outlet box with (2) ground fault protected gray duplex receptacles, white reel housing.	45 (13.7)	#12/3 SJ	5-20R	20	125	25 (11.3)	HBL45123GF220WM1

Note: 15 Amp: Supplied with 5 ft. power supply cord with HBL5266C, 15A straight blade plug. 20 Amp: Supplied with 5 ft. power supply cord with HBL5366C, 20A straight blade plug. Ground fault protected reels supplied with (1) GFM20 and (1) HBLP26FS.



HBL45123C



HBL45123TL20



HBL45123R



HBL45123R20WM1



HBL45123GF15



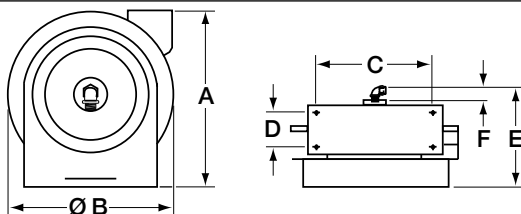
HBL45123GF220WM1

Accessories

Description	Weight Lbs. (kg)	Catalog Number
Pivot base 340° rotation fits all industrial models.	5 (2.3)	HBL340PB
Replacement stop.	.2 (.09)	HBL12BS

Dimensions

Inch (mm)	A	B	C	D	E	F
	13.00"	12.38"	8.00"	2.50"	9.75"	1.25"
	(330)	(314)	(203)	(64)	(248)	(32)



Note: All models have four .625" (15.9) diameter mounting holes.

Listing/Certification

UL 355
CSA C22.2 No. 21.

Environment

Dry, indoor, non-hazardous locations.

Mounting Positions

Wall mount.
Ceiling mount.
Bench mount.



HBL340PB