

# Fluorescent Obsolescence LED Alternatives Guide

**Due to adoption of several regulations under the RoHS (Restriction of Hazardous Substances) Directive, the production of numerous commonly used fluorescent lamps will be phased out in Europe throughout 2023. The aim is to reduce the use of mercury in electronics, increasing protection of both the environment and people and promote the use of cleaner, more efficient products.**

From a Chalmit perspective, this will affect all our luminaires that utilise T5 and T8 fluorescent tubes, with the lamps prohibited for manufacture from 24th August 2023. Not only will we be unable to source the lamp, but this will also directly impact on the overall demand and consequently supply of components and spares used within our fluorescent luminaires. Therefore, we have taken steps to identify and make several conventional luminaire ranges obsolete from our product offering.

If you are a user of Chalmit fluorescent luminaires, this move will encourage the long-term adoption of LED lighting technology which provides the well documented energy and maintenance savings... Ultimately, a solution that will help reduce carbon emissions and save you money in the long run.

As an easy reference guide, we have provided a list of all the fluorescent ranges that have been marked for obsolescence, and suggested LED alternatives that you could look to utilise. Any ranges which we haven't noted will remain for the time being.

If you need more information, please reach out to us on [getintouchuk@hubbell.com](mailto:getintouchuk@hubbell.com)

## Zone 1 Linear

### Lomond Linear

FL PARTCODE (Metallic Linear - Lomond)	LED EQUIVALENT 1 (Metallic Linear - Protecta X)	LED EQUIVALENT 2 (Metallic Bulkhead - Neo X)
LOMD/108/BI	-	NOXB/01L/LE
LOMD/208/BI	-	NOXB/01L/LE
LOMD/218/BI	PRXB/02L/LE	NOXB/01L/LE
LOMD/136/BI	PRXB/02L/LE	NOXB/02L/LE
LOMD/236/BI	PRXB/05L/LE	NOXB/04L/LE
LOMD/158/BI	PRXB/05L/LE	NOXB/04L/LE
LOMD/258/BI	PRXB/07L/LE	-
LOMD/108/BI/EM	-	NOXB/01L/LE/EMI
LOMD/218/BI/EM	PRXB/02L/LE/EM	NOXB/01L/LE/EMI
LOMD/236/BI/EM	PRXB/05L/LE/EM	-
LOMD/258/BI/EM	PRXB/07L/LE/EM	-



### Acclaim Recessible Linear

FL PARTCODE (Acclaim)	LED EQUIVALENT 1 (Acclaim)	LED EQUIVALENT 2 (Acclaim Retrofit Geartray)
ACLE/218/BI	ACLE/02L/LE	ACRE/02L/LE
ACLE/236/BI	ACLE/04L/LE	ACRE/04L/LE
ACLE/218/BI/EM	ACLE/02L/LE/EM	ACRE/02L/LE/EM
ACLE/236/BI/EM	ACLE/04L/LE/EM	ACRE/04L/LE/EM



### Curie Recessible Linear

FL PARTCODE (Curie Elite)	LED EQUIVALENT 1 (Curie Elite)
CUEE/218/BI	CUEE/03L/LE
CUEE/418/BI	CUEE/03L/LE
CUEE/236/BI	CUEE/03L/LE
CUEE/436/BI	-
CUEE/218/BI/EM	CUEE/03L/LE/EM
CUEE/418/BI/EM	CUEE/03L/LE/EM
CUEE/236/BI/EM	CUEE/03L/LE/EM
CUEE/436/BI/EM	-



## Zone 2 Linear

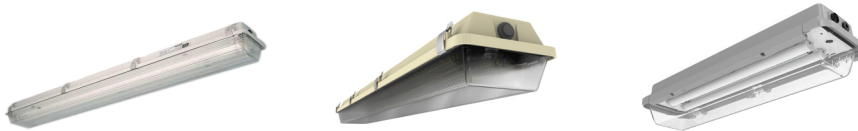
### Protecta Linear

FL PARTCODE (Protecta)	LED EQUIVALENT 1 (Protecta III)
PR2N/218/BI	PR3C/02L/LE
PR2N/136/BI	PR3C/02L/LE
PR2N/236/BI	PR3C/07L/LE
PR2N/218/BI/EM	PR3C/02L/LE/EM
PR2N/136/BI/EM	PR3C/02L/LE/EM
PR2N/236/BI/EM	PR3C/07L/LE/EM



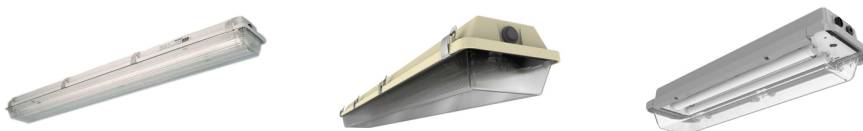
### Sterling II Linear

FL PARTCODE (Sterling II)	LED EQUIVALENT 1 (Sterling III)	LED EQUIVALENT 2 (Protecta III)
ST2N/218/BI	ST3N/03L/LE	PR3C/02L/LE
ST2N/136/BI	ST3N/03L/LE	PR3C/02L/LE
ST2N/236/BI	ST3N/06L/LE	PR3C/07L/LE
ST2N/158/BI	ST3N/03L/LE	PR3C/04L/LE
ST2N/258/BI	ST3N/09L/LE	PR3C/07L/LE
ST2N/218/BI/EM	ST3N/03L/LE/EM	PR3C/02L/LE/EM
ST2N/136/BI/EM	ST3N/03L/LE/EM	PR3C/02L/LE/EM
ST2N/236/BI/EM	ST3N/06L/LE/EM	PR3C/07L/LE/EM
ST2N/158/BI/EM	ST3N/03L/LE/EM	PR3C/04L/LE/EM
ST2N/258/BI/EM	ST3N/09L/LE/EM	PR3C/07L/LE/EM



### Sterling II Stainless Steel Linear

FL PARTCODE (Metallic Linear - Sterling II)	LED EQUIVALENT 1 (GRP Linear - Sterling III)	LED EQUIVALENT 2 (GRP Linear - Protecta III)
SS2N/218/BI	ST3N/03L/LE	PR3C/02L/LE
SS2N/136/BI	ST3N/03L/LE	PR3C/02L/LE
SS2N/236/BI	ST3N/06L/LE	PR3C/07L/LE
SS2N/158/BI	ST3N/03L/LE	PR3C/04L/LE
SS2N/258/BI	ST3N/09L/LE	PR3C/07L/LE
SS2N/218/BI/EM	ST3N/03L/LE/EM	PR3C/02L/LE/EM
SS2N/136/BI/EM	ST3N/03L/LE/EM	PR3C/02L/LE/EM
SS2N/236/BI/EM	ST3N/06L/LE/EM	PR3C/07L/LE/EM
SS2N/158/BI/EM	ST3N/03L/LE/EM	PR3C/04L/LE/EM
SS2N/258/BI/EM	ST3N/09L/LE/EM	PR3C/07L/LE/EM



## Industrial Linears

### Protecta Linear

FL PARTCODE (Protecta)	LED EQUIVALENT 1 (Protecta III)
PRGI/118/BI/HF	-
PRGI/218/BI/HF	PR31/02L/LE
PRGI/136/BI/HF	PR31/02L/LE
PRGI/236/BI/HF	PR31/07L/LE
PRGI/118/BI/EM	-
PRGI/218/BI/EM	PR31/02L/LE/EM
PRGI/136/BI/EM	PR31/02L/LE/EM
PRGI/236/BI/EM	PR31/07L/LE/EM



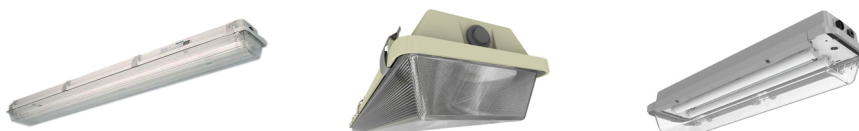
### Protecta Stainless Steel Linear

FL PARTCODE (Metallic Linear - Protecta)	LED EQUIVALENT 1 (GRP Linear - Protecta III)	LED EQUIVALENT 2 (Metallic Linear - Protecta X)
PRSI/118/BI/HF	-	-
PRSI/218/BI/HF	PR31/02L/LE	PRXI/02L/LE
PRSI/136/BI/HF	PR31/02L/LE	PRXI/02L/LE
PRSI/236/BI/HF	PR31/07L/LE	PRXI/05L/LE
PRSI/118/BI/EM	-	-
PRSI/218/BI/EM	PR31/02L/LE/EM	PRXI/02L/LE/EM
PRSI/136/BI/EM	PR31/02L/LE/EM	PRXI/02L/LE/EM
PRSI/236/BI/EM	PR31/07L/LE/EM	PRXI/05L/LE/EM



### Sterling II Linear

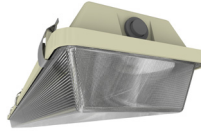
FL PARTCODE (Sterling II)	LED EQUIVALENT 1 (Sterling III)	LED EQUIVALENT 2 (Protecta III)
ST2I/118/BI/HF	ST3I/03L/LE	PR31/02L/LE
ST2I/218/BI/HF	ST3I/03L/LE	PR31/02L/LE
ST2I/136/BI/HF	ST3I/03L/LE	PR31/02L/LE
ST2I/236/BI/HF	ST3I/06L/LE	PR31/07L/LE
ST2I/158/BI/HF	ST3I/03L/LE	PR31/04L/LE
ST2I/258/BI/HF	ST3I/09L/LE	PR31/07L/LE
ST2I/118/BI/EM	ST3I/03L/LE/EM	PR31/02L/LE/EM
ST2I/218/BI/EM	ST3I/03L/LE/EM	PR31/02L/LE/EM
ST2I/136/BI/EM	ST3I/03L/LE/EM	PR31/02L/LE/EM
ST2I/236/BI/EM	ST3I/06L/LE/EM	PR31/07L/LE/EM
ST2I/158/BI/EM	ST3I/03L/LE/EM	PR31/04L/LE/EM
ST2I/258/BI/EM	ST3I/09L/LE/EM	PR31/07L/LE/EM



## Industrial Linear

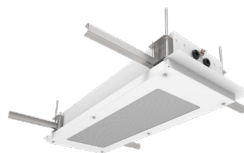
### Sterling II Stainless Steel Linear

FL PARTCODE (Metallic Linear - Sterling II)	LED EQUIVALENT 1 (Metallic Linear - Sterling III)	LED EQUIVALENT 2 (Protecta III)
SS2I/118/BI	ST3I/03L/LE	PR3I/02L/LE
SS2I/218/BI	ST3I/03L/LE	PR3I/02L/LE
SS2I/136/BI	ST3I/03L/LE	PR3I/02L/LE
SS2I/236/BI	ST3I/06L/LE	PR3I/07L/LE
SS2I/158/BI	ST3I/03L/LE	PR3I/04L/LE
SS2I/258/BI	ST3I/09L/LE	PR3I/07L/LE
SS2I/118/BI/EM	ST3I/03L/LE/EM	PR3I/02L/LE/EM
SS2I/218/BI/EM	ST3I/03L/LE/EM	PR3I/02L/LE/EM
SS2I/136/BI/EM	ST3I/03L/LE/EM	PR3I/02L/LE/EM
SS2I/236/BI/EM	ST3I/06L/LE/EM	PR3I/07L/LE/EM
SS2I/158/BI/EM	ST3I/03L/LE/EM	PR3I/04L/LE/EM
SS2I/258/BI/EM	ST3I/09L/LE/EM	PR3I/07L/LE/EM



### Acclaim Recessible Linear

FL PARTCODE (Acclaim)	LED EQUIVALENT 1 (Acclaim)	LED EQUIVALENT 2 (Acclaim Retrofit Geartray)
ACLI/218/BI	ACLI/02L/LE	ACRI/02L/LE
ACLI/236/BI	ACLI/04L/LE	ACRI/04L/LE
ACLI/218/BI/EM	ACLI/02L/LE/EM	ACRI/02L/LE/EM
ACLI/236/BI/EM	ACLI/04L/LE/EM	ACRI/04L/LE/EM



### Curie Recessible Linear

FL PARTCODE (Curie)	LED EQUIVALENT 1 (Curie)
CURI/218/BI	CURI/03L/LE
CURI/418/BI	CURI/04L/LE
CURI/236/BI	CURI/03L/LE
CURI/436/BI	-
CURI/218/BI/EM	CURI/03L/LE/EM
CURI/418/BI/EM	CURI/04L/LE/EM
CURI/236/BI/EM	CURI/03L/LE/EM
CURI/436/BI/EM	-

