

Chalmit®

# LUNA

..... Temporary Lighting for Hazardous Areas .....

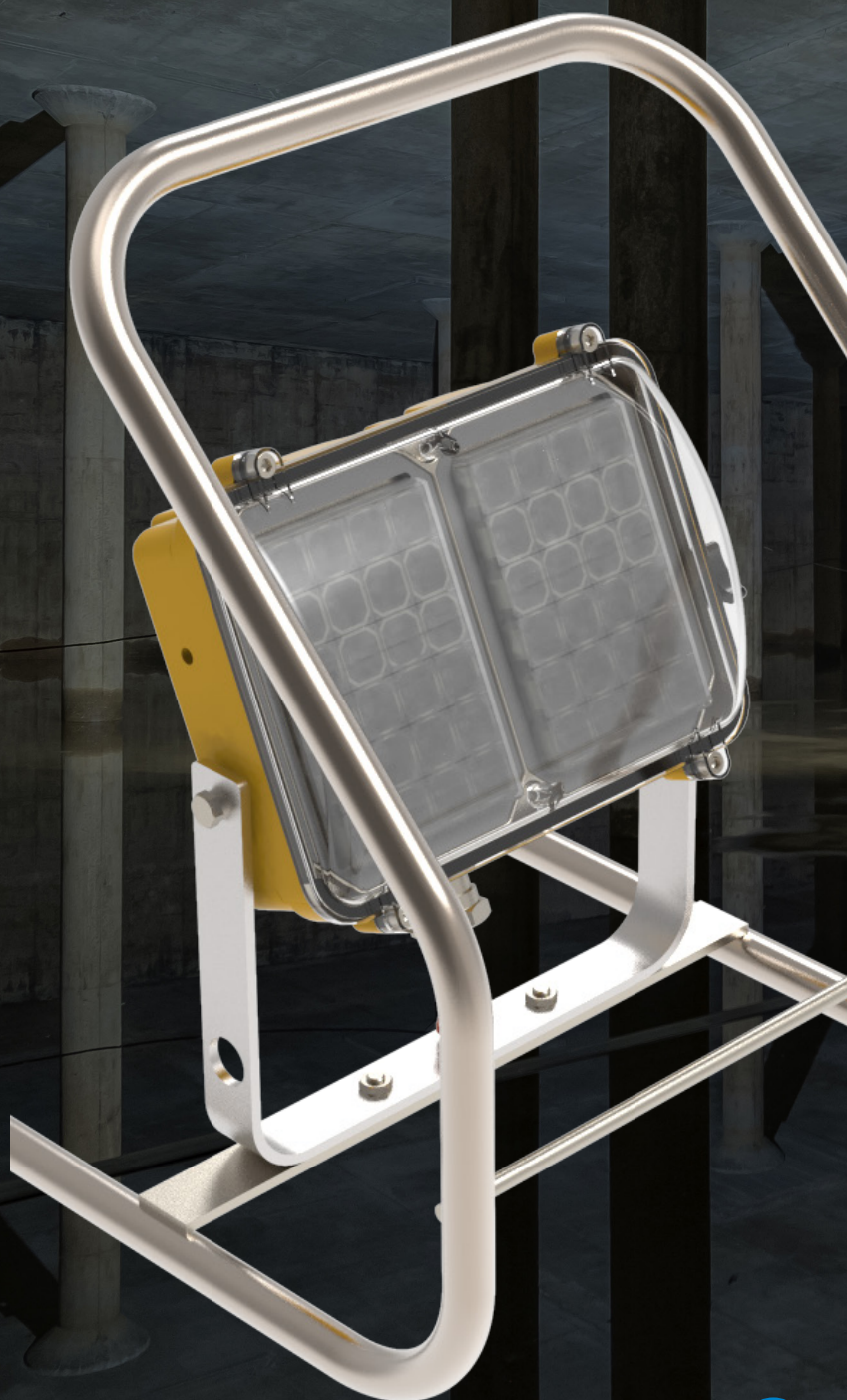


[www.hubbell.com/chalmit/en/Temporary-EX-LED-Floodlight](http://www.hubbell.com/chalmit/en/Temporary-EX-LED-Floodlight)





# LUNA





# Reliable. Robust. Powerful.

Easily portable and highly powerful, the **Luna LED** floodlight directs a crisp, white, targeted output (up to 5,600lm) where you need it most.

With a marine grade construction and ambient temperature range of -20°C to +55°C, the ATEX and IECEx certified Luna, can withstand the toughest use in some of the world's most arduous environments.

Discover how the **Luna** can light up your temporary lighting application today.



# Features & Benefits

## ● Certification

The Luna is ATEX & IECEx certified for use in Zones 1 & 2 (gas) and 21 & 22 (dust).

## ● LED Performance

Market leading LED Life of  
L70 >150,000 hours at 25°C  
50° beam angle for wide area illumination

## ● Ingress

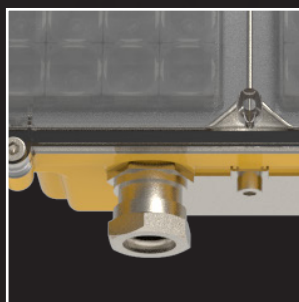
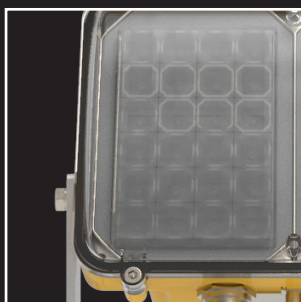
Waterproof & Dustproof (IP66/67)

## ● Linkable

Link multiple luminaires together  
from a single power supply to provide a  
greater spread of illumination

## ● Materials

- Uses proven materials to withstand the toughest environments
- Lightweight (9kg) for easy portability
- IK10 impact tested
- Marine Grade Aluminium Enclosure
- Stainless Steel Frame
- Toughened scratch, impact & chemical resistant diffuser
- Polycarbonate or Flat Glass Available







# Lighting. Where you need it.





# LUNA LED

HDL106TN Transportable Ex e LED Floodlight

The **Luna** Floodlight is an easily portable, reliable and highly powerful luminaire that directs a crisp, targeted output (up to 5,600lm) where you need it most.

With a robust, marine grade construction, maintenance-friendly design and LED lifespan of over 10 years, the **Luna** is ideal for temporary lighting applications



International Approvals



## Standard Specification

HDL106TN Transportable Ex e LED Floodlight

Type of Protection	Ex e mb (Increased Safety, Encapsulation) Ex tb (Dust Protected Enclosure)
ATEX Classification	Group II Category 2 GD
Area Classification	Zone 1 and 21 areas to EN 60079-10-1 and EN 60079-10-2 with installation to EN 60079-14
Certificate	EU Type Examination Certificate Sira 10ATEX5115X IECEX Certificate of Conformity IECEX SIR 10.0055X
Coding	Ex e mb IIC T* Gb Ex tb IIIC T*** °C Db Refer to table for T rating and Ambient
Enclosure	LM6 Aluminium with yellow epoxy powder finish (RAL 1018) and Polycarbonate diffuser
Entry	2 x M20 cable entries
Termination	3 core 4mm <sup>2</sup> max. conductor with looping
Installation	Stirrup mounted within transportable frame
Control Gear	Electronic Driver
Optical Distribution	Wide beam (50°)
Colour Temperature (CCT)	5000K (Cool White)
Colour Rendering Index (Ra)	>70
Maintenance	M8 Hex Head and M6 SKT Head
LED Lifetime @ 25°C Ambient	L70 > 150,000hrs
Impact Protection	IK10
Ingress Protection	IP66/67 to EN 60529
Surge Protection	4kV line to line, 6kV line to earth
Electrical Supply	Refer to Ordering Matrix (For details on Transformers or Splitter Boxes, please contact Internal Sales)

## Features

- ◆ **Ultra bright light** with market-leading efficacy
- ◆ **9kg Lightweight** transportable floodlight
- ◆ **>150,000 maintenance free hours** at 25°C (L70)
- ◆ Available with **a variety of cable lengths and plugs**
- ◆ **Robust marine grade construction** designed for tough use
- ◆ **Independent LED engines** for ultimate reliability and confidence on site\*

\*48 LED option only



Std. Cat No.	Delivered Output	Power Consumption	Voltage	Tclass	T °C (Dust)	Ambient °C	Weight
<b>HDL106TN0HWHW006</b>	2812lm	27W	100-254V AC	T4 T3	103	-20 to +50 -20 to +55	9kg
<b>HDL106TN0LWHW006</b>	2812lm	27W	18-54V AC/DC	T4	87	-20 to +55	9kg
<b>HDL106TN1HWHW006</b>	5624lm	53W	100-254V AC	T4 T3	103	-20 to +50 -20 to +55	9kg
<b>HDL106TN1LWHW006</b>	5624lm	53W	18-54V AC/DC	T4	87	-20 to +55	9kg

Options - Suffix to Catalogue No.

<b>FG</b>	Flat Glass and Aluminium front cover	<b>BP</b>	Nickel plated brass plugs (not available with Linkable version)
-----------	--------------------------------------	-----------	---

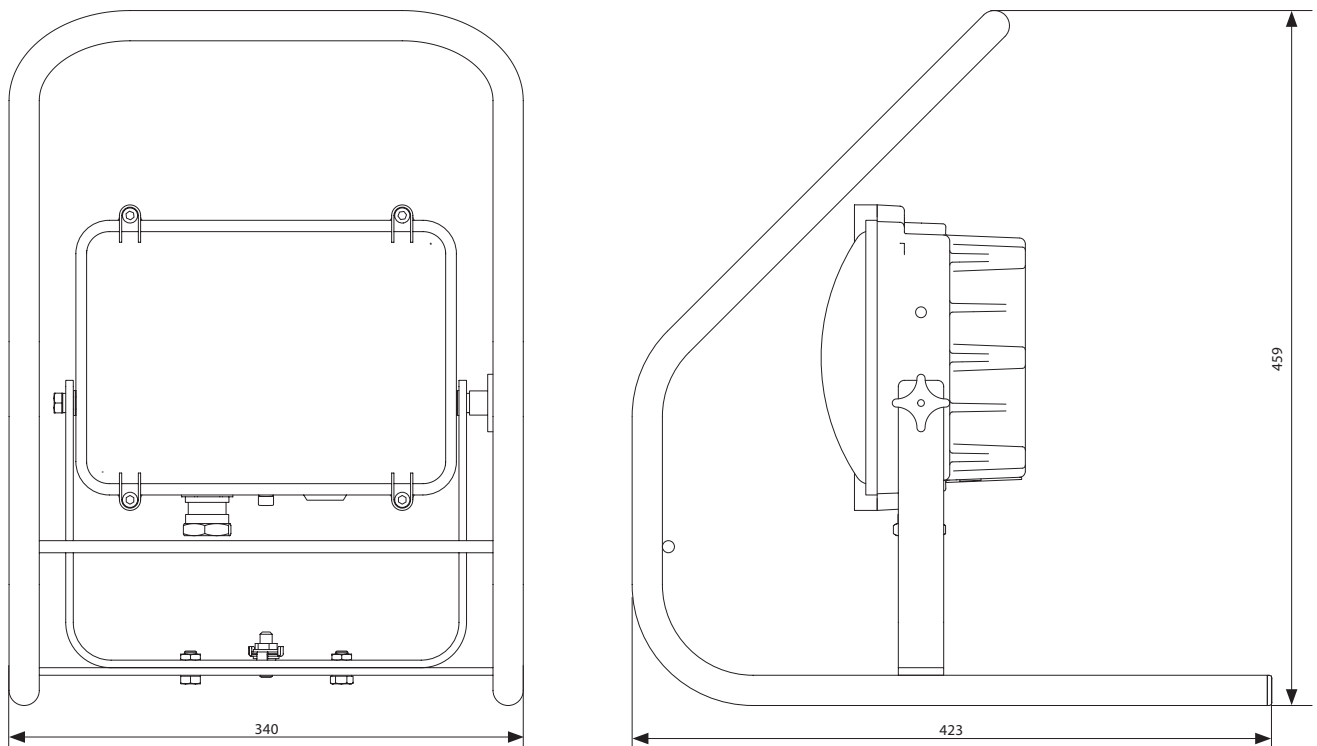
## HDL106TN CABLING CONFIGURATOR

Plug Manufacturer**	Plug Voltage**	Cable Type	Cable - Length	Linkable
<b>C</b> - CEAG	<b>024</b> - 24V	<b>S</b> - LSOH Armoured	<b>05</b> - 5m cable	<b>L</b> - Linkable version*
<b>A</b> - ATX	<b>110</b> - 110V	<b>H</b> - LSOH Unarmoured	<b>10</b> - 10m cable	
<b>S</b> - STAHL	<b>230</b> - 230V		<b>15</b> - 15m cable	

Typical ordering reference: **HDL106TN1HWHW006-C230H15**

\*Ambient restrictions apply when linking multiple units with CEAG sockets. Please contact Chalmit Technical for further information.

\*\*If a plug is not required, please leave Manufacturer and Voltage blank, e.g. HDL106TN1HWHW006-H15







#### **United Kingdom**

Chalmit PO Box 5575 Glasgow G52 9AP UK  
Tel: +44 (0) 141 882 5555 Email: [info@chalmit.com](mailto:info@chalmit.com)

#### **Middle East**

Building No. 5EA Office No. G03  
Dubai Airport Free Zone (DAFZ) PO Box 23529 Dubai UAE  
Tel: +971 (0)4 609 1222 Email: [middle-east@chalmit.com](mailto:middle-east@chalmit.com)

#### **Asia Pacific**

130 Joo Seng Road #03-02 Olivine Building Singapore 368357  
Tel: +65 6282 2242 Fax: +65 6284 4244 Email: [asia-pacific@chalmit.com](mailto:asia-pacific@chalmit.com)

#### **Korea**

512 Hyosung Intellian 681-3 Deungchon Dong  
Kangseo-Ku Seoul 157-030 Korea  
Tel: +82 2 2063 3719 Fax: +82 2 2603 7386  
Mob: +82 10 9977 6349 Email: [korea@chalmit.com](mailto:korea@chalmit.com)

#### **China**

Room H/I 18F No. 728 Pudong Avenue  
Shanghai International Ocean and Finance Building Shanghai 200120 P.R. China  
Tel: (86 21) 3392 6550 ext. 318 Fax: (86 21) 3392 6551  
Mob: +(86 139) 1829 4175 6349 Email: [china@chalmit.com](mailto:china@chalmit.com)