

Section 7

UL Lightning Protection Products

Description	Page #
7.1 UL Listed Lightning Protection Conductors.....	140-141
7.2 UL Listed Air Terminals	142
7.3 UL Listed Air Terminal Accessories	143-144
7.4 UL Listed Air Terminals Bases	145-152
7.5 UL Listed Air Terminals Splicers.....	153-156
7.6 UL Listed Air Terminals Bonding Plates and Lugs.....	157-159
7.7 UL Listed Air Terminals Bonding Clamps	159-162
7.8 UL Listed Thru Rod Assembly and Accessories.....	163-164
7.9 UL Listed Air Terminals Fasteners	164-165
7.10 Lightning Protection Structural Adhesive	166
7.11 Lightning Protection Access Wells.....	166

For Lightning Protection Molds see Section 4

UL LIGHTNING PROTECTION PRODUCTS

UL LISTED LIGHTNING PROTECTION CONDUCTORS

UL Listed Conductors

Catalog #	MATERIAL	AWG	STRAND CONFIGURATION	NO. OF STRANDS	STRAND DIAMETER	TIN PLATED	LBS PER 1000 FT	CIRCULAR MILLS	CABLE CODES
36-7562-00	Copper	LP Class I	Smooth Weave	29	.046"	NO	189	61,350	C
36-7562-01	Copper	LP Class I	Smooth Weave	29	.046"	YES	189	61,350	C
36-7562-02	Copper	LP Class I	Smooth Weave	30	.046"	NO	191	63,450	C
36-7573-00	Aluminum	LP Class I	Smooth Weave	24	.065"	NO	98	98,640	N/A
36-7562-03	Copper	#2	Smooth Weave	32	.046"	NO	206	67,700	C
36-7562-04	Copper	#2	Smooth Weave	32	.046"	YES	206	67,700	C
36-7562-06	Copper	1/0	Smooth Weave	24	.067"	NO	340	105,600	D
36-7562-07	Copper	1/0	Smooth Weave	24	.067"	YES	340	105,600	D
36-7573-02	Aluminum	1/0	Smooth Weave	26	.065"	NO	103	109,850	N/A
36-7573-01	Aluminum	1/0	Smooth Weave	28	.065"	NO	109	118,300	N/A
36-7561-08	Copper	1/0	Concentric	19	.075"	NO	325	106,850	D
36-7557-00	Copper	LP Class II	Rope Lay	28	.067"	NO	380	125,600	D
36-7557-01	Copper	LP Class II	Rope Lay	28	.067"	YES	380	125,600	D
36-7557-02	Copper	2/0	Rope Lay	30	.067"	NO	420	134,600	F
36-7557-03	Copper	2/0	Rope Lay	30	.067"	YES	420	134,600	F
36-7561-00	Copper	2/0	Concentric	19	.0837"	NO	410	133,100	C
36-7561-01	Copper	2/0	Concentric	19	.0837"	YES	410	133,100	C
36-7573-03	Aluminum	2/0	Smooth Weave	32	.065"	NO	124	135,200	N/A
36-7561-02	Copper	3/0	Concentric	19	.094"	NO	518	167,800	F
36-7561-03	Copper	3/0	Concentric	19	.094"	YES	518	167,800	F
36-7561-04	Copper	4/0	Concentric	19	.1057"	NO	653	211,600	Q
36-7561-05	Copper	4/0	Concentric	19	.1057"	YES	653	211,600	Q
36-7561-06	Copper	4/0	Concentric	37	.0757"	NO	653	211,600	Q
36-7561-07	Copper	4/0	Concentric	37	.0757"	YES	653	211,600	Q
36-7559-00	Aluminum	4/0	Concentric	19	.1057"	NO	204	211,700	N/A



Smooth Weave



Rope Lay



Concentric



Smooth Weave Aluminum



UL LISTED LIGHTNING PROTECTION CONDUCTORS

UL Listed Secondary Conductors

Catalog #	MATERIAL	AWG	STRAND CONFIGURATION	NO. OF STRANDS	STRAND DIAMETER	TIN PLATED	LBS PER 1000 FT	CIRCULAR MILLS	CABLE CODE
36-7563-00	Copper	#6	Smooth Weave	14	.046"	NO	92	29,600	A
36-7563-01	Copper	#6	Smooth Weave	14	.046"	YES	92	29,600	A
36-7563-02	Copper	#4	Smooth Weave	10	.067"	NO	130	44,800	B
36-7563-03	Copper	#4	Smooth Weave	10	.067"	YES	130	44,800	B
36-7573-04	Aluminum	#2	Smooth Weave	16	.065"	NO	62	67,600	N/A
36-7558-01	Copper	#6	Solid	1	.162"	NO	80	26,240	N/A
36-7558-00	Copper	#6	Solid	1	.162"	YES	80	26,240	N/A
36-7558-02	Copper	#4	Solid	1	.2044"	NO	127	41,740	N/A
36-7558-03	Copper	#4	Solid	1	.2044"	YES	127	41,740	N/A
36-7560-00	Aluminum	#4	Solid	1	.2044"	NO	40	41,740	N/A
36-7558-04	Copper	#2	Solid	1	.2577"	NO	204	66,360	N/A
36-7558-05	Copper	#2	Solid	1	.2577"	YES	204	66,360	N/A
36-7560-01	Aluminum	#2	Solid	1	.2577"	NO	60	66,360	B
36-7559-01	Aluminum	#4	Concentric	10	.065"	NO	41	42,200	N/A



Solid Copper



Smooth Weave



Solid Aluminum

UL Listed Aluminum Steel Reinforced Conductors for Catenary LP Systems

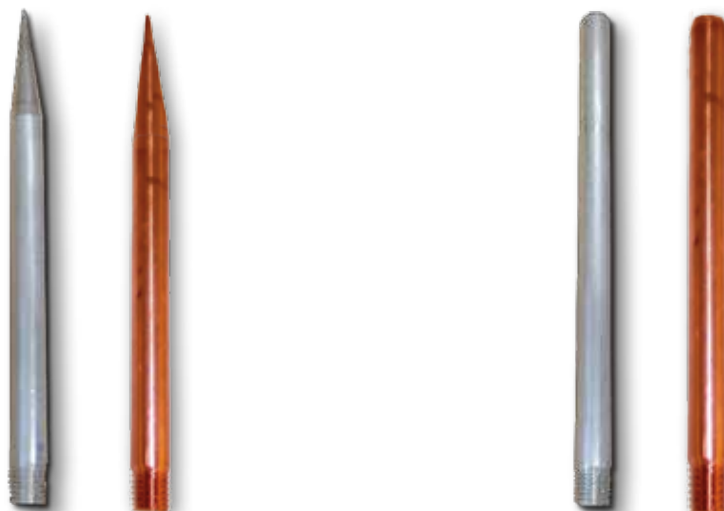
Catalog #	MATERIAL	AWG	STRAND CONFIGURATION	NO. OF STRANDS	STRAND DIAMETER	TIN PLATED	LBS PER 1000 FT	CIRCULAR MILLS	CABLE CODE
36-8193-01	Aluminum Steel Reinforced	1/0	Concentric	7	.1327	NO	145	105,656	A
36-8193-03	High Strength Aluminum Steel Reinforced	Class II	Concentric	19	.1327	NO	527	211,311	A



UL LISTED AIR TERMINALS

UL Listed Air Terminals

UL Listed Air Terminals are made of solid aluminum, copper, nickel plated, stainless steel, lead dipped or tinned* rod. They can be ordered with a standard 2" taper or safety tipped. *Tinned rod only available up to 24" lengths.



Catalog #	Product Description	Diameter (in)	Length (in)	Material
38-7237-00	2" Tapered Tip Air Terminal	1/2"	12"	Aluminum
38-7237-05		1/2"	15"	Aluminum
38-7237-04		1/2"	18"	Aluminum
38-7237-01		1/2"	24"	Aluminum
38-7237-10		1/2"	48"	Aluminum
38-7237-11		1/2"	60"	Aluminum
38-7613-03		5/8"	12"	Aluminum
38-7613-00		5/8"	15"	Aluminum
38-7613-12		5/8"	18"	Aluminum
38-7613-02		5/8"	24"	Aluminum
38-7613-08		5/8"	48"	Aluminum
38-7613-10		5/8"	60"	Aluminum
38-7321-01		1/2"	12"	Copper
38-7321-13		1/2"	15"	Copper
38-7321-10		1/2"	18"	Copper
38-7321-00		1/2"	24"	Copper
38-7321-03		1/2"	48"	Copper
38-7321-11		1/2"	60"	Copper
38-7425-23		5/8"	12"	Copper
38-7425-18		5/8"	15"	Copper
38-7425-20		5/8"	18"	Copper
38-7425-13		5/8"	24"	Copper
38-7425-24		5/8"	48"	Copper
38-7425-05		5/8"	60"	Copper

Catalog #	Product Description	Diameter (in)	Length (in)	Material
38-7237-09	Safety Tipped Air Terminal	1/2"	12"	Aluminum
38-7237-08		1/2"	15"	Aluminum
38-7237-02		1/2"	18"	Aluminum
38-7237-07		1/2"	24"	Aluminum
38-7237-03		1/2"	48"	Aluminum
38-7237-12		1/2"	60"	Aluminum
38-7613-04		5/8"	12"	Aluminum
38-7613-05		5/8"	15"	Aluminum
38-7613-06		5/8"	18"	Aluminum
38-7613-07		5/8"	24"	Aluminum
38-7613-09		5/8"	48"	Aluminum
38-7613-11		5/8"	60"	Aluminum
38-7347-01		1/2"	12"	Copper
38-7321-14		1/2"	15"	Copper
38-7321-15		1/2"	18"	Copper
38-7347-00		1/2"	24"	Copper
38-7321-16		1/2"	48"	Copper
38-7321-17		1/2"	60"	Copper
38-7425-17		5/8"	12"	Copper
38-7425-19		5/8"	15"	Copper
38-7425-21		5/8"	18"	Copper
38-7425-04		5/8"	24"	Copper
38-7425-16		5/8"	48"	Copper
38-7425-22		5/8"	60"	Copper

Other lengths and materials available, contact thermOweld. 3/8" Copper rod available upon request.

UL LISTED AIR TERMINAL ACCESSORIES

UL Listed Air Terminal Extension Rods

Solid Aluminum, Copper or Stainless Steel rod threaded at each end for use as a main conductor or air terminal extension. Available in lengths up to (12'). Specify length in feet, by replacing the "L" with the length in feet when ordering. UL Listed Example: 38-7594-48 = 1/2" Copper 48" long.

Catalog #	Product Description	Diameter (in)	Material
38-7590-"L"	Extension Rod	1/2"	Aluminum
38-7591-"L"	Extension Rod	5/8"	Aluminum
38-7593-"L"	Extension Rod	3/8"	Copper
38-7594-"L"	Extension Rod	1/2"	Copper
38-7595-"L"	Extension Rod	5/8"	Copper
38-7596-"L"	Extension Rod	3/4"	Copper

"L" = Length of Extension Rod in Feet.



UL Listed Swivels

Cast aluminum or brass swivel action allows air terminals to level on most surfaces. Added jam nut allows swivel to be locked in place. UL Listed.

Catalog #	Product Description	Size	Material
38-7751-01	Swivel	1/2" female to 1/2" male	Aluminum
38-7751-00	Swivel	1/2" female to 5/8" male	Aluminum
38-7751-02	Swivel	1/2" male to 5/8" female	Aluminum
38-7751-03	Swivel	5/8" female to 5/8" male	Aluminum
38-7752-00	Swivel	3/8" female to 3/8" male	Brass
38-7752-01	Swivel	3/8" female to 1/2" male	Brass
38-7752-02	Swivel	3/8" male to 1/2" female	Brass
38-7752-03	Swivel	1/2" female to 1/2" male	Brass
38-7752-04	Swivel	1/2" female to 5/8" male	Brass
38-7752-05	Swivel	1/2" male to 5/8" female	Brass
38-7752-06	Swivel	5/8" female to 5/8" male	Brass



UL LISTED AIR TERMINAL ACCESSORIES

UL Listed Tripod Brace

Galvanized tripod brace is made of mild steel. Can be attached with screw or adhesive. For all air terminals over 24" in length. Fits 3/8", 1/2" & 5/8" rods. UL Listed.

Catalog #	Product Description	Use with Air Terminal
38-7494-18	Tripod Brace	30"
38-7494-24	Tripod Brace	36"
38-7494-36	Tripod Brace	48"
38-7494-48	Tripod Brace	60"
38-7494-60	Tripod Brace	72"
38-7494-72	Tripod Brace	84"
38-7494-84	Tripod Brace	96"

Other Sizes available upon request.



UL LIGHTNING PROTECTION PRODUCTS

UL LISTED AIR TERMINAL BASES

UL Listed Cast Multi-Purpose Point Base

UL Listed Cast Multi-Purpose Base is a cast base threaded for mounting on horizontal and/or vertical surfaces using screws, 1/4" bolts, 1/4" drive-in anchors or an adhesive. Bolt tension cap can be turned so cables can run horizontal or vertical. Accepts up to two conductors.

Catalog #	Product Description	Material
38-7806-11	Cast Multi-Purpose Point Base - For 1/2" Air Terminals	Brass
38-7806-01	Cast Multi-Purpose Point Base - For 1/2" Air Terminals	Aluminum
38-7806-12	Cast Multi-Purpose Point Base - For 5/8" Air Terminals	Brass
38-7806-02	Cast Multi-Purpose Point Base - For 5/8" Air Terminals	Aluminum



UL Listed Dual Mount Base

UL Listed Dual Mount Bases are cast and threaded for mounting on horizontal or vertical surfaces using screws, 1/4" bolts, 1/4" drive-in anchors, or an adhesive. Bolt tension cap can be turned so cables can run horizontal or vertical.

Catalog #	Product Description	Material
38-7239-01	Dual Mount Bases - for 1/2" Air Terminal	Aluminum
38-7239-02	Dual Mount Bases - for 5/8" Air Terminal	Aluminum
38-7239-10	Dual Mount Bases - for 3/8" Air Terminal	Bronze
38-7239-11	Dual Mount Bases - for 1/2" Air Terminal	Bronze
38-7239-12	Dual Mount Bases - for 5/8" Air Terminal	Bronze
38-7239-20	Dual Mount Bases - for 3/8" Air Terminal	Tinned
38-7239-21	Dual Mount Bases - for 1/2" Air Terminal	Tinned
38-7239-22	Dual Mount Bases - for 5/8" Air Terminal	Tinned



UL Listed Dual Mount Narrow Base

UL Listed Dual Mount Bases are cast and can be mounted either horizontally or vertically with screws, 1/4" bolt, or 1/4" drive-in-anchor. Bolt tension cap can be turned so cables run horizontal or vertical. Furnished for air terminal size 3/8" or 1/2".

Catalog #	Product Description	Material
38-7244-01	Dual Mount Bases - for 1/2" Air Terminal	Aluminum
38-7244-10	Dual Mount Bases - for 3/8" Air Terminal	Bronze
38-7244-11	Dual Mount Bases - for 1/2" Air Terminal	Bronze
38-7244-21	Dual Mount Bases - for 3/8" Air Terminal	Tinned
38-7244-22	Dual Mount Bases - for 1/2" Air Terminal	Tinned



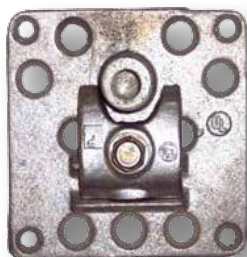
Suitable for use with lightning protection cable range of approximately 29,000 to 212,000 circular mils.

UL LIGHTNING PROTECTION PRODUCTS

UL LISTED AIR TERMINAL BASES

UL Listed Adhesive Base

UL Listed Adhesive Bases are designed with bolt tension cable clamping and can be used on any surface with an adhesive. It is available for all air terminals sizes 3/8", 1/2", and 5/8"



Catalog #	Product Description	Material
38-7242-01	Adhesive Bases - for 1/2" Air Terminal	Aluminum
38-7242-02	Adhesive Bases - for 5/8" Air Terminal	Aluminum
38-7242-10	Adhesive Bases - for 3/8" Air Terminal	Bronze
38-7242-11	Adhesive Bases - for 1/2" Air Terminal	Bronze
38-7242-12	Adhesive Bases - for 5/8" Air Terminal	Bronze
38-7242-20	Adhesive Bases - for 3/8" Air Terminal	Tinned
38-7242-21	Adhesive Bases - for 1/2" Air Terminal	Tinned
38-7242-22	Adhesive Bases - for 5/8" Air Terminal	Tinned

UL Listed Side Mount Narrow Base

This cast base can be mounted vertically with screws, 1/4 " bolts, or 1/4 " drive- in anchors. Bolt tension cap can be turned so cables can run horizontal or vertical. Furnished for all air terminal sizes 3/8", 1/2", and 5/8". Specify when ordering. UL listed.



Catalog #	Product Description	Material
38-7496-01	Side Mount Base - for 1/2" Air Terminal	Aluminum
38-7496-02	Side Mount Base - for 5/8" Air Terminal	Aluminum
38-7496-10	Side Mount Base - for 3/8" Air Terminal	Bronze
38-7496-11	Side Mount Base - for 1/2" Air Terminal	Bronze
38-7496-12	Side Mount Base - for 5/8" Air Terminal	Bronze
38-7496-20	Side Mount Base - for 3/8" Air Terminal	Tinned
38-7496-21	Side Mount Base - for 1/2" Air Terminal	Tinned
38-7496-22	Side Mount Base - for 5/8" Air Terminal	Tinned

Suitable for use with lightning protection cable range of approximately 29,000 to 212,000 circular mils.

UL LIGHTNING PROTECTION PRODUCTS

UL LISTED AIR TERMINAL BASES

UL Listed Top Mount Narrow Base

This cast base can be mounted horizontally with screws, 1/4" bolts, or 1/4" drive-in anchors. Bolt tension cap can be turned so cables can run horizontal or vertical. Furnished for all air terminal sizes 3/8", 1/2", and 5/8". Specify when ordering. UL listed.

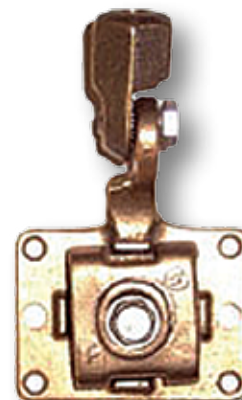
Catalog #	Product Description	Material
38-7495-01	Top Mount Base - for 1/2" Air Terminal	Aluminum
38-7495-02	Top Mount Base - for 5/8" Air Terminal	Aluminum
38-7495-10	Top Mount Base - for 3/8" Air Terminal	Bronze
38-7495-11	Top Mount Base - for 1/2" Air Terminal	Bronze
38-7495-12	Top Mount Base - for 5/8" Air Terminal	Bronze
38-7495-20	Top Mount Base - for 3/8" Air Terminal	Tinned
38-7495-21	Top Mount Base - for 1/2" Air Terminal	Tinned
38-7495-22	Top Mount Base - for 5/8" Air Terminal	Tinned



UL Listed Universal Swivel Base

This is the most universal base in the industry. The swivel adaptor allows the air terminal to level under most conditions. It can be secured with screws, nails, 1/4" bolts, 1/4" drive-in anchors, or an adhesive. Bolt tension cap can be turned so the cable can run horizontal or vertical. Perfect for skylights, domed or gently sloping roofs, or any uneven surface. Furnished for all air terminal sizes 3/8", 1/2", and 5/8". Specify when ordering. UL Listed.

Catalog #	Product Description	Material
38-7491-01	Universal Swivel Base - for 1/2" Air Terminal	Aluminum
38-7491-02	Universal Swivel Base - for 5/8" Air Terminal	Aluminum
38-7491-10	Universal Swivel Base - for 3/8" Air Terminal	Bronze
38-7491-11	Universal Swivel Base - for 1/2" Air Terminal	Bronze
38-7491-12	Universal Swivel Base - for 5/8" Air Terminal	Bronze
38-7491-20	Universal Swivel Base - for 3/8" Air Terminal	Tinned
38-7491-21	Universal Swivel Base - for 1/2" Air Terminal	Tinned
38-7491-22	Universal Swivel Base - for 5/8" Air Terminal	Tinned



UL LIGHTNING PROTECTION PRODUCTS

UL LISTED AIR TERMINAL BASES

UL Listed Narrow Surface Base

This strap base can be mounted on a narrow surface or ridge roof with screws or nails. Base can be modified to accept other anchors. Bolt tension cap provides maximum cable support. Furnished for all air terminal sizes - 3/8", 1/2", and 5/8". Specify when ordering. UL listed.

Catalog #	Product Description	Material
38-7499-01	Narrow Surface Base - for 1/2" Air Terminal	Aluminum
38-7499-02	Narrow Surface Base - for 5/8" Air Terminal	Aluminum
38-7499-10	Narrow Surface Base - for 3/8" Air Terminal	Copper
38-7499-11	Narrow Surface Base - for 1/2" Air Terminal	Copper
38-7499-12	Narrow Surface Base - for 5/8" Air Terminal	Copper
38-7499-20	Narrow Surface Base - for 3/8" Air Terminal	Tinned
38-7499-21	Narrow Surface Base - for 1/2" Air Terminal	Tinned
38-7499-22	Narrow Surface Base - for 5/8" Air Terminal	Tinned



UL Listed Offset Base

A cast base with a 2" offset to clear an overhang when mounted on a vertical surface using screws, 1/4 " bolts, or 1/4 " drive-in anchors. Bolt tension cap can be turned so cables can run horizontal or vertical. Furnished for all air terminal sizes 3/8", 1/2", and 5/8". Specify when ordering. UL listed

Catalog #	Product Description	Material
38-7444-01	Offset Base - for 1/2" Air Terminal	Aluminum
38-7444-02	Offset Base - for 5/8" Air Terminal	Aluminum
38-7444-10	Offset Base - for 3/8" Air Terminal	Bronze
38-7444-11	Offset Base - for 1/2" Air Terminal	Bronze
38-7444-12	Offset Base - for 5/8" Air Terminal	Bronze
38-7444-20	Offset Base - for 3/8" Air Terminal	Tinned
38-7444-21	Offset Base - for 1/2" Air Terminal	Tinned
38-7444-22	Offset Base - for 5/8" Air Terminal	Tinned



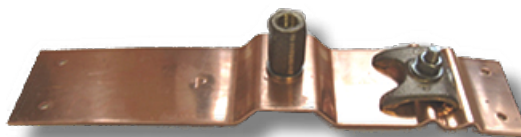
UL LIGHTNING PROTECTION PRODUCTS

UL LISTED AIR TERMINAL BASES

UL Listed Ridge Mount Base

This strap base can be mounted on ridge roof with screws or nails. Base can be modified to accept other anchors. Bolt tension cap provides maximum cable support. Furnished for point sizes - 3/8", 1/2", and 5/8". Specify when ordering. UL listed.

Catalog #	Product Description	Material
38-7501-01	Ridge Mount Base - for 1/2" Air Terminal	Aluminum
38-7501-02	Ridge Mount Base - for 5/8" Air Terminal	Aluminum
38-7501-10	Ridge Mount Base - for 3/8" Air Terminal	Copper
38-7501-11	Ridge Mount Base - for 1/2" Air Terminal	Copper
38-7501-12	Ridge Mount Base - for 5/8" Air Terminal	Copper
38-7501-20	Ridge Mount Base - for 3/8" Air Terminal	Tinned
38-7501-21	Ridge Mount Base - for 1/2" Air Terminal	Tinned
38-7501-22	Ridge Mount Base - for 5/8" Air Terminal	Tinned



UL Listed Cast Straight Base

Cast straight base. Two bolts or set screws hold cable firmly and air terminal screws into top to keep cable and air terminal in straight line. Available for air terminal sizes 3/8", 1/2" and 5/8". Specify when ordering. Hex Rod for all air terminal sizes and with set screws in lieu of bolts. UL Listed

Catalog #	Product Description	Material
38-7505-21	Cast Straight Base - Hex Rod - for 1/2" Air Terminal	Aluminum
38-7505-22	Cast Straight Base - Hex Rod - for 5/8" Air Terminal	Aluminum
38-7505-30	Cast Straight Base - Hex Rod - for 3/8" Air Terminal	Bronze
38-7505-31	Cast Straight Base - Hex Rod - for 1/2" Air Terminal	Bronze
38-7505-32	Cast Straight Base - Hex Rod - for 5/8" Air Terminal	Bronze



UL LIGHTNING PROTECTION PRODUCTS

UL LISTED AIR TERMINAL BASES

UL Listed Standing Seam Base

This cast base for standing seam roof has 3/4" groove to fit over most seams. Provided with a swivel adapter for leveling air terminals. Cable holder is adjustable so cables can run parallel or perpendicular. Two set screws secure base to seam. Available for air terminal sizes 3/8", 1/2", and 5/8". Specify when ordering. UL Listed



Catalog #	Product Description	Material
38-7507-01	Standing Seam Base - for 1/2" Air Terminal	Aluminum
38-7507-02	Standing Seam Base - for 5/8" Air Terminal	Aluminum
38-7507-10	Standing Seam Base - for 3/8" Air Terminal	Bronze
38-7507-11	Standing Seam Base - for 1/2" Air Terminal	Bronze
38-7507-12	Standing Seam Base - for 5/8" Air Terminal	Bronze
38-7507-20	Standing Seam Base - for 3/8" Air Terminal	Tinned
38-7507-21	Standing Seam Base - for 1/2" Air Terminal	Tinned
38-7507-22	Standing Seam Base - for 5/8" Air Terminal	Tinned

UL Listed Stamped Vent Base

Stamped vent air terminal base with no cable holder. Over 3 square inches of contact to direct mount air terminal on continuous metal surface. Furnished for all air terminal sizes 3/8", 1/2", and 5/8". Specify when ordering. UL listed



Catalog #	Product Description	Material
38-7523-01	Stamped Vent Base - for 1/2" Air Terminal	Aluminum
38-7523-02	Stamped Vent Base - for 5/8" Air Terminal	Aluminum
38-7523-10	Stamped Vent Base - for 3/8" Air Terminal	Copper
38-7523-11	Stamped Vent Base - for 1/2" Air Terminal	Copper
38-7523-12	Stamped Vent Base - for 5/8" Air Terminal	Copper
38-7523-20	Stamped Vent Base - for 3/8" Air Terminal	Tinned
38-7523-21	Stamped Vent Base - for 1/2" Air Terminal	Tinned
38-7523-22	Stamped Vent Base - for 5/8" Air Terminal	Tinned

UL LIGHTNING PROTECTION PRODUCTS

UL LISTED AIR TERMINAL BASES

UL Listed U-Bolt Pipe Mount Bases with Cable Connector

UL Listed cast aluminum, brass or tinned u-bolt pipe mount base. Can be configured for top or side mount. Size 3" O.D. or above can be provided with a cable connection. Fits O.D. pipes from 1.315" O.D. to 8.625" O.D. Available for air terminal sizes 3/8", 1/2", or 5/8".



UL Listed U-Bolt Pipe Mount Base with Cable Connector 1.900" to 3.00" Range

Catalog #	Product Description	Material
38-7685-21	1/2" Terminal U-Bolt Dual Mount Base - Fits 1.9" to 3.0" OD Pipe, w/cable connector	Aluminum
38-7685-22	5/8" Terminal U-Bolt Dual Mount Base - Fits 1.9" to 3.0" OD Pipe, w/cable connector	Aluminum
38-7685-34	3/8" Terminal U-Bolt Dual Mount Base - Fits 1.9" to 3.0" OD Pipe, w/cable connector	Tinned
38-7685-35	1/2" Terminal U-Bolt Dual Mount Base - Fits 1.9" to 3.0" OD Pipe, w/cable connector	Tinned
38-7685-36	5/8" Terminal U-Bolt Dual Mount Base - Fits 1.9" to 3.0" OD Pipe, w/cable connector	Tinned

UL Listed U-Bolt Pipe Mount Base with Cable Connector 2.75" to 4.50" Range

Catalog #	Product Description	Material
38-7686-21	1/2" Terminal U-Bolt Dual Mount Base - Fits 2.75" to 4.5" OD Pipe, w/cable connector	Aluminum
38-7686-22	5/8" Terminal U-Bolt Dual Mount Base - Fits 2.75" to 4.5" OD Pipe, w/cable connector	Aluminum
38-7686-34	3/8" Terminal U-Bolt Dual Mount Base - Fits 2.75" to 4.5" OD Pipe, w/cable connector	Tinned
38-7686-35	1/2" Terminal U-Bolt Dual Mount Base - Fits 2.75" to 4.5" OD Pipe, w/cable connector	Tinned
38-7686-36	5/8" Terminal U-Bolt Dual Mount Base - Fits 2.75" to 4.5" OD Pipe, w/cable connector	Tinned

Continued on Next Page

UL LIGHTNING PROTECTION PRODUCTS

UL LISTED AIR TERMINAL BASES

UL Listed U-Bolt Pipe Mount Bases with Cable Connector Continued

UL Listed U-Bolt Pipe Mount Base with Cable Connector 4.50" to 6.75" Range

Catalog #	Product Description	Material
38-7687-21	1/2" Terminal U-Bolt Dual Mount Base - Fits 4.5" to 6.75" OD Pipe, w/cable connector	Aluminum
38-7687-22	5/8" Terminal U-Bolt Dual Mount Base - Fits 4.5" to 6.75" OD Pipe, w/cable connector	Aluminum
38-7687-34	3/8" Terminal U-Bolt Dual Mount Base - Fits 4.5" to 6.75" OD Pipe, w/cable connector	Tinned
38-7687-35	1/2" Terminal U-Bolt Dual Mount Base - Fits 4.5" to 6.75" OD Pipe, w/cable connector	Tinned
38-7687-36	5/8" Terminal U-Bolt Dual Mount Base - Fits 4.5" to 6.75" OD Pipe, w/cable connector	Tinned

UL Listed U-Bolt Pipe Mount Base with Cable Connector 6.00" to 8.625" Range

Catalog #	Product Description	Material
38-7688-21	1/2" Terminal U-Bolt Dual Mount Base - Fits 6.0" to 8.625" OD Pipe, w/cable connector	Aluminum
38-7688-22	5/8" Terminal U-Bolt Dual Mount Base - Fits 6.0" to 8.625" OD Pipe, w/cable connector	Aluminum
38-7688-34	3/8" Terminal U-Bolt Dual Mount Base - Fits 6.0" to 8.625" OD Pipe, w/cable connector	Tinned
38-7688-35	1/2" Terminal U-Bolt Dual Mount Base - Fits 6.0" to 8.625" OD Pipe, w/cable connector	Tinned
38-7688-36	5/8" Terminal U-Bolt Dual Mount Base - Fits 6.0" to 8.625" OD Pipe, w/cable connector	Tinned



UL LIGHTNING PROTECTION PRODUCTS

UL LISTED CONDUCTOR SPLICERS

UL Listed Parallel Splicers

UL Listed Parallel Cable Splicers are cast and is designed with one carriage bolt and 1-1/2" of contact on cables or wires. Designed so the bolt does not come through bottom of the splicer and penetrate roof membrane. May be used with full size cables and secondary bonding wire.

Catalog #	Product Description	Material
38-7248-00	Parallel Splicers (Single Carriage Bolt, 1-1/2" of contact)	Aluminum
38-7248-10	Parallel Splicers (Single Carriage Bolt, 1-1/2" of contact)	Bronze
38-7248-11	Parallel Splicers (Single Carriage Bolt, 1-1/2" of contact)	Tinned



UL Listed Parallel Splicers

UL Listed Cast Parallel Cable Splicers are designed with a double carriage bolt tension and 2" of contact on cables or wires. May be used with full size cables and secondary bonding wire.

Catalog #	Product Description	Material
38-7250-00	Parallel Splicers (Double Carriage Bolts, 2" of contact)	Aluminum
38-7250-10	Parallel Splicers (Double Carriage Bolts, 2" of contact)	Bronze
38-7250-11	Parallel Splicers (Double Carriage Bolts, 2" of contact)	Tinned



UL Listed Parallel Splicer

UL Listed Parallel Cable Splicers are cast and is designed with one carriage bolt. This splicer may be used with rod, cable, or bonding wire where less contact is acceptable.

Catalog #	Product Description	Material
38-7297-00	Parallel Splicers (Single Carriage Bolt, 1" of contact)	Aluminum
38-7297-10	Parallel Splicers (Single Carriage Bolt, 1" of contact)	Bronze
38-7297-11	Parallel Splicers (Single Carriage Bolt, 1" of contact)	Tinned



UL LIGHTNING PROTECTION PRODUCTS

UL LISTED CONDUCTOR SPLICERS

UL Listed Cast Parallel Splicer

UL Listed Cast Parallel Cable Splicers are designed with double bolt tension and 4" of contact on cable or wires. Splicer may be used with full size cables or secondary bonding wires.



Catalog #	Product Description	Material
38-7300-00	Cast Parallel Splicers (Double Carriage Bolts, 4" of contact)	Aluminum
38-7300-10	Cast Parallel Splicers (Double Carriage Bolts, 4" of contact)	Bronze
38-7300-11	Cast Parallel Splicers (Double Carriage Bolts, 4" of contact)	Tinned

UL Listed Cast Parallel Splicer

UL Listed Cast Parallel Cable Splicers are designed with double bolt tension and 2" of contact on cable or wires. Splicer may be used with full size cables or secondary bonding wires.



Catalog #	Product Description	Material
38-7301-00	Cast Parallel Splicers (Single Carriage Bolt, 2" of contact)	Aluminum
38-7301-10	Cast Parallel Splicers (Single Carriage Bolt, 2" of contact)	Bronze
38-7301-11	Cast Parallel Splicers (Single Carriage Bolt, 2" of contact)	Tinned

UL Listed Cast Straight Splicer

UL Listed Straight Cable Splicers are cast and is designed with four bolt cable tension - two per cable. This splicer is used to butt ends of cable in straight line. It is also available with set screws in lieu of bolts.



Catalog #	Product Description	Material
38-7299-00	Cast Straight Splicers	Aluminum Hex
38-7299-10	Cast Straight Splicers	Brass Hex

Suitable for use with lightning protection cable range of approximately 29,000 to 212,000 circular mils.

UL LIGHTNING PROTECTION PRODUCTS

UL LISTED CONDUCTOR SPLICERS

UL Listed Cast Tee Splicer

Cast tee cable splicer has bolt tension for connections with all main size conductors. UL listed

Catalog #	Product Description	Material
38-7492-00	Cast Tee Splicer	Aluminum
38-7492-10	Cast Tee Splicer	Bronze
38-7492-11	Cast Tee Splicer	Tinned



UL Listed Cross Run Splicer

Cast cross run cable splicer has 1-1/2" of contact with four bolt tension. For use with all full size cables. UL listed

Catalog #	Product Description	Material
38-7445-00	Cross Run Splicer	Aluminum
38-7445-10	Cross Run Splicer	Bronze
38-7445-11	Cross Run Splicer	Tinned



UL Listed Cast Bimetallic Splicer

UL Listed Cast Bimetallic Cable Splicers are designed for making connections between aluminum and copper cables in a straight line. Two-bolt tension on each cable for making a strong connection. Use with all main size conductors.

Catalog #	Product Description	Material
38-7346-00	Bimetallic Splicer - Cast	Aluminum to Copper



UL Listed Machined Bimetallic Splicer

Machined bimetallic cable splicer for making connections between aluminum and copper cables in a straight line. Used to make connections inside 1" PVC conduit. Use with all main size conductors. UL Listed

Catalog #	Product Description	Material
38-7346-10	Bimetallic Splicer - Machined	Aluminum to Copper



Suitable for use with lightning protection cable range of approximately 29,000 to 212,000 circular mils.

UL LIGHTNING PROTECTION PRODUCTS

UL LISTED CONDUCTOR SPLICERS

UL Listed Aluminum and Brass Cast Bimetallic 1-Bolt Parallel Splicer

Cast bimetallic cable splicer for making connections between Aluminum and Copper cables. Single bolt tension cap allows the cables to come from a variety of directions. Use with all main size conductors. Eliminates the use of an additional splicer. UL Listed



Catalog #	Product Description	Material
38-7764-00	Bimetallic Splicer - Cast	Aluminum to Brass

UL Listed Cable Disconnects

Cast cable disconnects are used for testing system continuity or ground resistance. Single bolt caps allow for easy disconnection. UL Listed



UL Listed Cable Disconnects

Catalog #	Product Description	Material
38-7530-10	Brass Cast Cable Disconnect	Brass
38-7530-00	Aluminum Cast Cable Disconnect	Aluminum

Suitable for use with lightning protection cable range of approximately 29,000 to 212,000 circular mils.

UL LIGHTNING PROTECTION PRODUCTS

UL LISTED BONDING PLATES

UL Listed Cast Bonding Plate

Cast bonding plate with 3 square inches of contact. Bolt tension cap can be turned so cables can run horizontal or vertical. For use with all full size cables. UL listed.

Catalog #	Product Description	Material
38-7532-00	Cast Bonding Plate	Aluminum
38-7532-10	Cast Bonding Plate	Bronze
38-7532-11	Cast Bonding Plate	Tinned
38-7532-50	Cast Bonding Plate - Bimetallic	Alum/Brass



UL Listed Cast Bonding Plate

Cast bonding plate with 8 square inches of contact surface. Holes provided for 1/4" bolts or smaller screws. Bolt tension cap can be turned so cables can run any direction. For use with all full size cables. UL listed

Catalog #	Product Description	Material
38-7471-00	Cast Bonding Plate	Aluminum
38-7471-10	Cast Bonding Plate	Bronze
38-7471-11	Cast Bonding Plate	Tinned
38-7471-50	Cast Bonding Plate - Bimetallic	Alum/Brass



UL Listed Stamped Bonding Plate

Stamped bonding plate with 8 square inches of contact. Bolt tension cap provides maximum cable support. For use with all full size cables. UL listed

Catalog #	Product Description	Material
38-7533-00	Stamped Bonding Plate	Aluminum
38-7533-10	Stamped Bonding Plate	Bronze
38-7533-11	Stamped Bonding Plate	Tinned



UL LISTED BONDING LUGS

UL Listed Cast Bonding Lug

Cast bonding lug with 3 square inches of contact surface. Available for bolt sizes #10 to 7/8" diameter. Anchor hole drilled in center. Bolt tension cap can turn so cable can be connected from any direction. For use with all full size cables. Specify bolt size when ordering. UL Listed



Catalog #	Product Description	Material
38-7535-00	1/4" Cast Bonding Lug	Aluminum
38-7535-01	3/8" Cast Bonding Lug	Aluminum
38-7535-02	1/2" Cast Bonding Lug	Aluminum
38-7535-10	1/4" Cast Bonding Lug	Bronze
38-7535-11	3/8" Cast Bonding Lug	Bronze
38-7535-12	1/2" Cast Bonding Lug	Bronze
38-7535-20	1/4" Cast Bonding Lug	Tinned
38-7535-21	3/8" Cast Bonding Lug	Tinned
38-7535-22	1/2" Cast Bonding Lug	Tinned
38-7535-50	1/4" Cast Bonding Lug - Bimetallic	Alum/Bronze
38-7535-51	3/8" Cast Bonding Lug - Bimetallic	Alum/Bronze
38-7535-52	1/2" Cast Bonding Lug - Bimetallic	Alum/Bronze

UL Listed Cast Bonding Lug

Cast bonding lug with 3 square inches of contact surface. Available for bolt sizes #10 to 1/2" diameter. Anchor hole drilled at top. Bolt tension cap can turn so cable can be connected from any direction. For use with all full size cables. Specify bolt size when ordering. UL Listed



Catalog #	Product Description	Material
38-7536-00	1/4" Cast Bonding Lug	Aluminum
38-7536-01	3/8" Cast Bonding Lug	Aluminum
38-7536-02	1/2" Cast Bonding Lug	Aluminum
38-7536-10	1/4" Cast Bonding Lug	Bronze
38-7536-11	3/8" Cast Bonding Lug	Bronze
38-7536-12	1/2" Cast Bonding Lug	Bronze
38-7536-20	1/4" Cast Bonding Lug	Tinned
38-7536-21	3/8" Cast Bonding Lug	Tinned
38-7536-22	1/2" Cast Bonding Lug	Tinned
38-7536-50	1/4" Cast Bonding Lug - Bimetallic	Alum/Bronze
38-7536-51	3/8" Cast Bonding Lug - Bimetallic	Alum/Bronze
38-7536-52	1/2" Cast Bonding Lug - Bimetallic	Alum/Bronze

UL LISTED BONDING LUGS

UL Listed Secondary Cast Bonding Lug

Cast terminal bonding lug with 2 bolt tension on secondary wires. Lug can be secured with a screw, 1/4" drive-in anchor, or 1/4" bolt. For use with all secondary wires. UL listed

Catalog #	Product Description	Material
38-7540-00	Secondary Cast Bonding Lug	Aluminum
38-7540-10	Secondary Cast Bonding Lug	Bronze
38-7540-20	Secondary Cast Bonding Lug	Stainless Steel
38-7540-11	Secondary Cast Bonding Lug	Tinned



UL LISTED BONDING CLAMPS

UL Listed C-Clamp Bonding Clamp

Cast bonding clamp has 8 square inches of surface contact. C-type clamp allows easy installation on I-beams or other flat areas up to 1" thickness. Bolt tension cap has 1-1/2" of cable contact. For use with all full size cables. UL Listed

Catalog #	Product Description	Material
38-7537-00	C-Clamp Bonding Clamp	Aluminum
38-7537-10	C-Clamp Bonding Clamp	Bronze
38-7537-11	C-Clamp Bonding Clamp	Tinned



UL Listed C-Clamp Bonding Clamp

Cast bonding clamp has 8 square inches of surface contact. C-type allows easy installation on I-beams or other flat areas up to 3" thickness. Bolt tension cap has 1-1/2" of cable contact. For use with all full size cables. UL listed

Catalog #	Product Description	Material
38-7538-00	C-Clamp Bonding Clamp	Aluminum
38-7538-10	C-Clamp Bonding Clamp	Bronze
38-7538-11	C-Clamp Bonding Clamp	Tinned



UL LIGHTNING PROTECTION PRODUCTS

UL LISTED BONDING CLAMPS

UL Listed Bonding Clamp

Cast bolt tension bonding clamp with 3 square inches of contact secures to i-beams, purlin flange, etc. For use with all full size cables and secondary wires. UL listed



Catalog #	Product Description	Material
38-7541-00	Bonding Clamp	Aluminum
38-7541-10	Bonding Clamp	Bronze
38-7541-11	Bonding Clamp	Tinned

UL Listed Bonding Clamp

Cast bolt tension bonding clamp secures to i-beams, purlin flange, etc. For use with all full size cables and secondary wires. For secondary bond only. UL listed



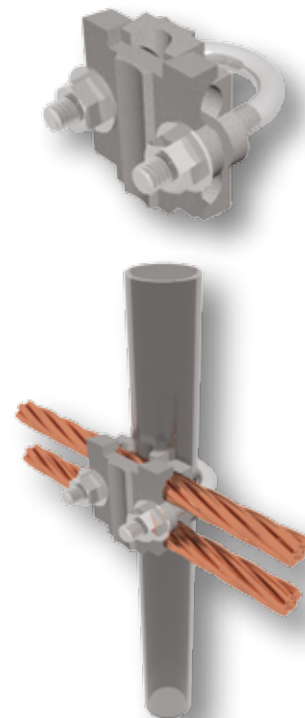
Catalog #	Product Description	Material
38-7542-00	Bonding Clamp	Aluminum
38-7542-10	Bonding Clamp	Bronze
38-7542-11	Bonding Clamp	Tinned

UL LISTED BONDING CLAMPS

UL Listed 1" U-Bolt Bonding Clamp

1" Cast U-Bolt Bonding Clamps for use with pipe or round bar sizes .400" to 1.315". Can be used with cable and wire sizes form #6 to 250 MCM. UL Listed.

Catalog Number	Material	Description
38-7420-00	Aluminum	1" U-Bolt Bonding Clamp - Fits .400" to 1.375" O.D. Pipe
38-7420-10	Bronze	1" U-Bolt Bonding Clamp - Fits .400" to 1.375" O.D. Pipe
38-7420-11	Tinned	1" U-Bolt Bonding Clamp - Fits .400" to 1.375" O.D. Pipe

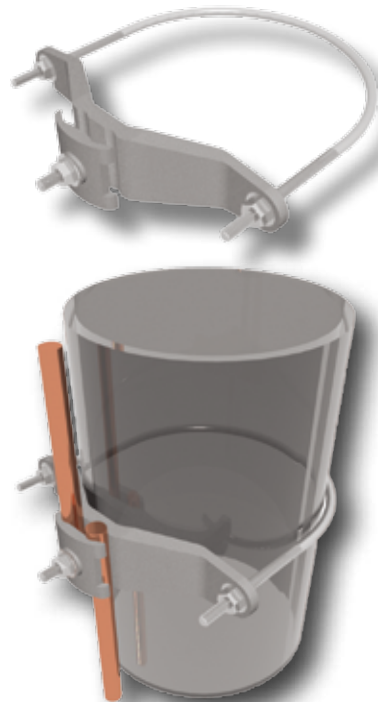


Pipe Range 0.375" - 1"

UL Listed 2"-8" U-Bolt Bonding Clamp

2"-8" Cast U-Bolt Bonding Clamps provide 1-1/2" of contact on pipe or cable. Use with all full size conductors. Fits pipe sizes 1.315" to 8.625". Used to bond any metal body including grade level water pipe. UL Listed.

Catalog Number	Material	Description
38-7421-00	Aluminum	2" U-Bolt Bonding Clamp - Fits 1.315" to 2.000" O.D. Pipe
38-7421-10	Bronze	2" U-Bolt Bonding Clamp - Fits 1.315" to 2.000" O.D. Pipe
38-7421-11	Tinned	2" U-Bolt Bonding Clamp - Fits 1.315" to 2.000" O.D. Pipe
38-7422-00	Aluminum	3" U-Bolt Bonding Clamp - Fits 1.900" to 3.000" O.D. Pipe
38-7422-10	Bronze	3" U-Bolt Bonding Clamp - Fits 1.900" to 3.000" O.D. Pipe
38-7422-11	Tinned	3" U-Bolt Bonding Clamp - Fits 1.900" to 3.000" O.D. Pipe
38-7423-00	Aluminum	4" U-Bolt Bonding Clamp - Fits 2.750" to 4.500" O.D. Pipe
38-7423-10	Bronze	4" U-Bolt Bonding Clamp - Fits 2.750" to 4.500" O.D. Pipe
38-7423-11	Tinned	4" U-Bolt Bonding Clamp - Fits 2.750" to 4.500" O.D. Pipe
38-7424-00	Aluminum	6" U-Bolt Bonding Clamp - Fits 4.500" to 6.750" O.D. Pipe
38-7424-10	Bronze	6" U-Bolt Bonding Clamp - Fits 4.500" to 6.750" O.D. Pipe
38-7424-11	Tinned	6" U-Bolt Bonding Clamp - Fits 4.500" to 6.750" O.D. Pipe
38-7711-00	Aluminum	8" U-Bolt Bonding Clamp - Fits 6.000" to 8.625" O.D. Pipe
38-7711-10	Bronze	8" U-Bolt Bonding Clamp - Fits 6.000" to 8.625" O.D. Pipe
38-7711-11	Tinned	8" U-Bolt Bonding Clamp - Fits 6.000" to 8.625" O.D. Pipe



Pipe Range 2" - 8"

UL LIGHTNING PROTECTION PRODUCTS

UL LISTED BONDING CLAMPS

UL Listed Secondary Bonding Clamp

Cast bolt tension secondary bonding lug for connections to VTR's (Vent Through Roof), roof drains, flashings, etc. For use with secondary wire. UL listed



Catalog #	Product Description	Material
38-7539-00	Secondary Bonding Clamp	Aluminum
38-7539-10	Secondary Bonding Clamp	Bronze
38-7539-11	Secondary Bonding Clamp	Tinned

UL Listed Ground Rod Clamp

Cast bronze ground rod clamp has 1 1/2" of contact and two bolt tension. UL listed



Catalog #	Product Description	Material
38-7461-00	Ground Rod Clamp for 1/2" Rod	Bronze
38-7461-02	Ground Rod Clamp for 5/8" to 3/4" Rod	Bronze

UL Listed Flexible Bonding Strap

Extra Flexible Bonding Strap for use in moving or vibrating metal objects. The size of the Flexible bonding Strap is 3/4"-1" wide x 1/8" thick and comes in standard lengths of 10" and 12". Other lengths available upon request. UL listed



Catalog #	Product Description	Material
38-7709-10	10" Flexible Bonding Strap	Aluminum
38-7710-10	10" Flexible Bonding Strap	Tinned Copper
38-7709-12	12" Flexible Bonding Strap	Aluminum
38-7710-12	12" Flexible Bonding Strap	Tinned Copper

UL LIGHTNING PROTECTION PRODUCTS

UL LISTED THRU ROD ASSEMBLIES & ACCESSORIES

UL Listed Thru Rod Assembly with Two Cable Connectors

Threaded 1/2" rod with parallel cable connectors on each end. Comes standard with 1/2" Neoprene washer for weatherproofing the outside terminal end. UL Listed.

UL Listed Thru Rod Assembly with One Cable Connector

Threaded rod furnished with a parallel cable connector and swivel air terminal adaptor. Comes standard with 1/2" Neoprene washer for weatherproofing the outside terminal end. UL Listed.

UL Listed Thru Rod Assembly with Two Cable Connectors

Catalog #	Product Description	Length	Material
38-7754-00	1/2" Rod Assembly	12"	Aluminum
38-7755-00	1/2" Rod Assembly	18"	Aluminum
38-7614-00	1/2" Rod Assembly	24"	Aluminum
38-7754-10	1/2" Rod Assembly	12"	Brass
38-7755-10	1/2" Rod Assembly	18"	Brass
38-7614-10	1/2" Rod Assembly	24"	Brass
38-7754-20	1/2" Rod Assembly	12"	Bimetallic
38-7755-20	1/2" Rod Assembly	18"	Bimetallic
38-7614-20	1/2" Rod Assembly	24"	Bimetallic

UL Listed Thru Rod Assembly with One Cable Connector

Catalog #	Product Description	Swivel Adapter Size	Material
38-7756-01	12" Thru Rod Assembly	1/2"	Aluminum
38-7757-01	18" Thru Rod Assembly	1/2"	Aluminum
38-7758-01	24" Thru Rod Assembly	1/2"	Aluminum
38-7756-02	12" Thru Rod Assembly	5/8"	Aluminum
38-7757-02	18" Thru Rod Assembly	5/8"	Aluminum
38-7758-02	24" Thru Rod Assembly	5/8"	Aluminum
38-7756-11	12" Thru Rod Assembly	1/2"	Brass
38-7757-11	18" Thru Rod Assembly	1/2"	Brass
38-7758-11	24" Thru Rod Assembly	1/2"	Brass
38-7756-12	12" Thru Rod Assembly	5/8"	Brass
38-7757-12	18" Thru Rod Assembly	5/8"	Brass
38-7758-12	24" Thru Rod Assembly	5/8"	Brass
38-7756-21	12" Thru Rod Assembly	1/2"	Bimetallic
38-7757-21	18" Thru Rod Assembly	1/2"	Bimetallic
38-7758-21	24" Thru Rod Assembly	1/2"	Bimetallic
38-7756-22	12" Thru Rod Assembly	5/8"	Bimetallic
38-7757-22	18" Thru Rod Assembly	5/8"	Bimetallic
38-7758-22	24" Thru Rod Assembly	5/8"	Bimetallic



Thru Rod Assembly with Two Cable Connectors
(Bimetallic shown)

Thru Rod Assembly with One Cable Connectors
(Aluminum shown)

UL LIGHTNING PROTECTION PRODUCTS

UL LISTED THRU ROD ASSEMBLIES & ACCESSORIES

UL Listed Thru Rod Assembly with PVC Cap

The thru rod assembly with PVC cap is designed with 1/2" threaded rod furnished with a parallel cable connector, conductor inside the conduit. The assembly fits over 1" conduit in order to form a water-tight connection to the connector inside the conduit. UL Listed.

Catalog #	Product Description	Material
38-7402-00	Thru Rod Assembly with 1" PVC Cap	Aluminum
38-7402-10	Thru Rod Assembly with 1" PVC Cap	Brass
38-7402-20	Thru Rod Assembly with 1" PVC Cap	Bimetallic



PVC Protector Pipe

PVC protector pipe for use where cable are subject to displacement or damage. Schedule 40 and sunlight resistant.



Catalog #	Product Description
38-7647-04	PVC Protector Pipe 3/4" x 4'
38-7647-10	PVC Protector Pipe 3/4" x 10'
38-7648-10	PVC Protector Pipe 1" x 10'

UL Listed Protector Pipe Strap

Galvanized EMT 1-hole strap. Used to secure protector pipes Fits pipe up to 1" i.D. UL Listed



Catalog #	Product Description	Material
38-7646-01	1-Hole Strap for 1" Schedule 40 PVC	Galvanized

UL LISTED FASTENERS

UL Listed Loop Fastener

1/2" wide loop—secure with a single nail or screw. For use with all main conductors. UL Listed

Catalog #	Product Description	Material
38-7544-00	1/2" Loop Fastener	Aluminum
38-7544-10	1/2" Loop Fastener	Copper
38-7544-11	1/2" Loop Fastener	Tinned



UL Listed Loop Fastener

5/8" wide loop—secure with a single nail, screw, 1/4" bolt, or 1/4" drive-in anchor. For use with all main conductors. UL Listed

Catalog #	Product Description	Material
38-7446-00	5/8" Loop Fastener with 1/4" holes	Aluminum
38-7446-01	5/8" Loop Fastener with 3/8" holes	Aluminum
38-7446-10	5/8" Loop Fastener with 1/4" holes	Copper
38-7446-11	5/8" Loop Fastener with 3/8" holes	Copper
38-7446-20	5/8" Loop Fastener with 1/4" holes	Tinned
38-7446-21	5/8" Loop Fastener with 3/8" holes	Tinned



UL Listed Stamped Adhesive Cable Clip

Stamped adhesive cable clip with three compression type fingers to hold the cable securely to the roof. Middle finger stamped so the adhesive does not interfere with the anchoring process. For use with all main size cables and secondary bonding wires. UL Listed.

Catalog #	Product Description	Material
38-7549-00	Stamped Finger Bonding Plate	Aluminum
38-7549-10	Stamped Finger Bonding Plate	Brass
38-7549-20	Stamped Finger Bonding Plate	Copper
38-7549-11	Stamped Finger Bonding Plate	Tinned



UL Listed Class II Cast Adhesive Cable Holder

Our cast adhesive cable holder is designed with a bolt tension cable clip. It is designed for use with all #6 to 4/0 AWG full and secondary cable sizes. UL Listed.

Catalog #	Product Description	Material
38-7632-00	Cast Adhesive Cable Holder	Aluminum
38-7632-10	Cast Adhesive Cable Holder	Bronze
38-7632-11	Cast Adhesive Cable Holder	Tinned



LIGHTNING PROTECTION STRUCTURAL ADHESIVE

M-1 Structural Adhesive/Sealant

M-1 Structural Adhesive/Sealant—10.1 oz. tube is available in 3 colors; Aluminum Gray, Black and White.

Catalog #	Product Description	Color
38-7547-00	M-1 Structural Adhesive/Sealant 10.1 oz.	Aluminum/Gray
38-7547-01	M-1 Structural Adhesive/Sealant 10.1 oz.	White
38-7547-02	M-1 Structural Adhesive/Sealant 10.1 oz.	Black



GROUND ACCESS WELLS

PVC Ground Access Well

PVC Ground Access Wells are available in 10" or 12" diameter. Galvanized Steel lid included with "Ground" tag on lid.



UL Listed Ground Well

Catalog #	Product Description	Material
38-7804-01	PVC Ground Well w/Galvanized Lid - 10" x 12", Schedule 40	PVC/Steel
38-7804-11	PVC Ground Well w/Galvanized Lid - 12" x 12", Schedule 40	PVC/Steel
38-7804-02	PVC Ground Well w/Galvanized Lid - 10" x 18", Schedule 40	PVC/Steel
38-7804-12	PVC Ground Well w/Galvanized Lid - 12" x 18", Schedule 40	PVC/Steel
38-7804-00	PVC Ground Well w/Galvanized Lid - 10" x 24", Schedule 40	PVC/Steel
38-7804-10	PVC Ground Well w/Galvanized Lid - 12" x 24", Schedule 40	PVC/Steel
38-7804-03	PVC Ground Well w/Galvanized Lid - 10" x 36", Schedule 40	PVC/Steel
38-7804-13	PVC Ground Well w/Galvanized Lid - 12" x 36", Schedule 40	PVC/Steel