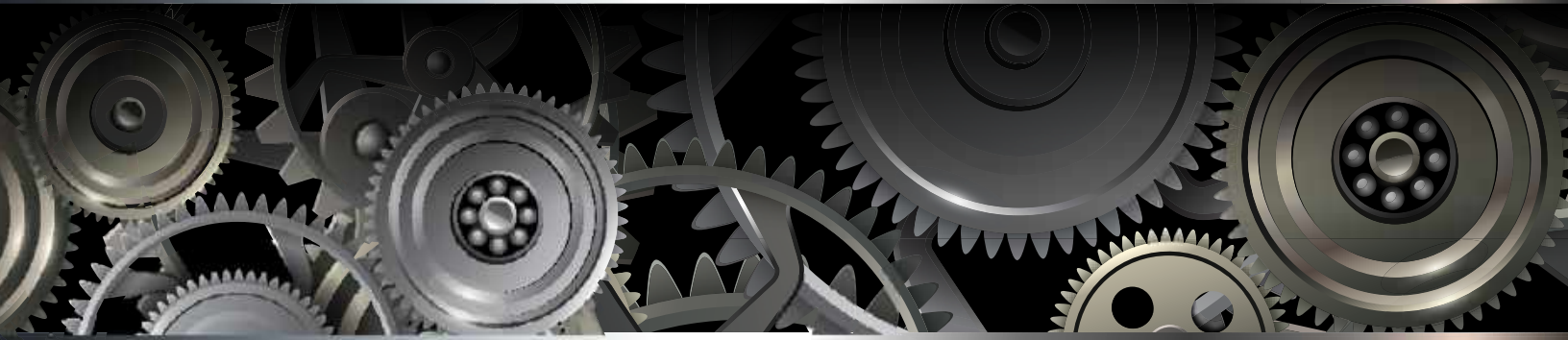


# INDUSTRIAL CAPABILITIES



# WHO WE ARE



Hubbell Industrial Lighting has invested more than 40 years in lighting environments that range from vast warehouses to assembly industries and food processing facilities. Hubbell Industrial promises quality and quantity of light, maintenance cost savings, energy reduction and professional assistance when deciding which solution is best for your application.

## Columbia LIGHTING

Columbia Lighting is one of North America's premier manufacturers of commercial and industrial lighting products. As a producer of a wide variety of specification and commercial-grade luminaires, Columbia Lighting is a recognized leader in providing quality and innovation at competitive prices.



Dual-Lite has been a leading brand for life safety lighting since 1940, when the founder formed a unique concept whereby an exit sign could operate in both emergency and normal mode. Many Dual-Lite products have been industry firsts or incorporate innovative features. The impact of Dual-Lite's product innovation has been so strong, it's changed the perception and direction of life safety products throughout the entire lighting industry.

# CONTENTS

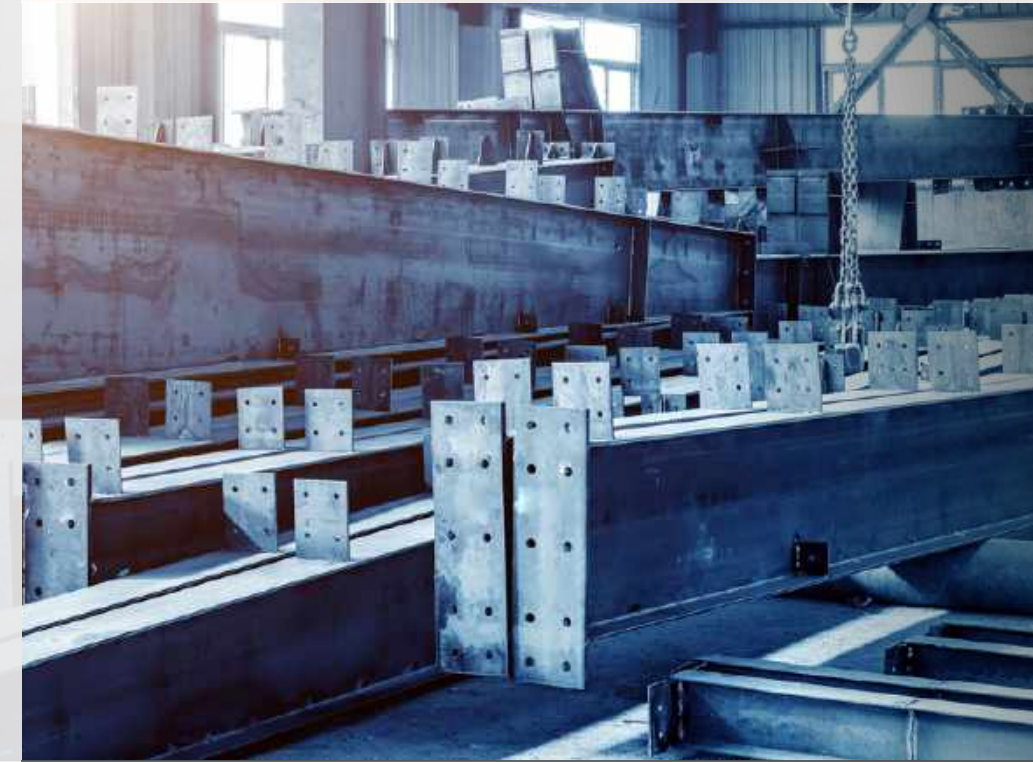
RETAIL | p.10



LIGHT INDUSTRIAL | p.12



DEMANDING | p.15



HAZARDOUS | p.18



LIFE SAFETY | p. 24



BATTERY PACKS & INVERTERS | p. 32



Product	CSA/UL1598	DLC	NSF	IP	Class Loc.	Retail	Light Industrial	Demanding	Hazardous
Sawano	Damp	-	-	-	-	●			
LWS	Damp	Standard, Premium	-	-	-	●			
MPL	Damp	Standard	-	-	-	●			
Peloton™	Damp	Standard, Premium	-	-	-	●	●		
CHB	Damp	Premium	-	-	-	●	●		
UTB2	Damp	Standard, Premium	-	-	-	●	●		
HBL	Damp	-	Yes	IP56/66	-		●		
CRN	Wet	Premium	-	IP65	-		●		
Triple H	Wet	Standard	-	-	-			●	
KSL	Wet	-	-	-	-			●	
LXEW	Wet	Standard, Premium	Yes	IP65/IP66/IP67	-			●	
LXEM	Wet	Standard, Premium	Yes	IP65/IP66/IP67	-			●	
LXEN	Wet	Standard, Premium	Yes	IP65/IP66/IP67	-			●	
LXEP	Wet	Standard	Yes	IP65/IP66/IP67	-			●	
VTC	Wet	-	-	-	-			●	
SNL	Wet	-	Yes	IP65 / IP66	-			●	
FPH	Wet	-	Yes	IP66	-			●	
PHB	Wet	Standard, Premium	-	IP66	-			●	
HBLH	Wet	-	-	IP56/66	Class I Div 2				●
KHL	Wet	-	-	-	Class I Div 2				●
CLH	Wet	-	Yes	IP66	Class I Div 2				●
HEM	Wet	Standard	Yes	IP65/IP66/IP67	Class I Div 2				●
VTH	Wet	-	-	-	Class 1 Div 2				●
HLEML	Wet	-	-	-	Class 1 Div 1, Class I Div 1 & 2, Class 3 Div 1 & 2				●

Product	CSA/UL1598	UL	IP	Class Loc.	Retail	Light Industrial	Demanding	Hazardous
EV4R	Damp	UL924	-	-	●	●		
Sempra® SE	Damp	UL 924	-	-		●		
EVE	Damp	UL 924	-	-	●	●		
EVC	Damp	UL 924	-	-		●		
EVHC	Damp	UL 924	-	-	●	●		
SEWL	Wet	UL 924, UL Sanitation	IP66	C1D2			●	●
Dynamo	Wet	UL 924, UL Sanitation	IP66 for 4X models	C1D2, C2D1			●	●
EVE4X	Wet	UL 924	-	-			●	●
PG	Wet	UL 924	-	-			●	
EBB-VEXA400	Wet	UL 924, UL 844	-	-				●
EBB	Wet	UL 924, UL 844	-	-				●
HLEBS	Wet	UL924, UL844, UL1203, UL1598, UL8750	-	-				●
HLEBS-HEXA100	Wet	UL924, UL844, UL1203, UL1598, UL8750	-	-				●
DPL (Type P only)	Wet	UL 924	-	-	●	●	●	
DYNC	Wet	UL 924, UL Sanitation	IP66	C1D2			●	●

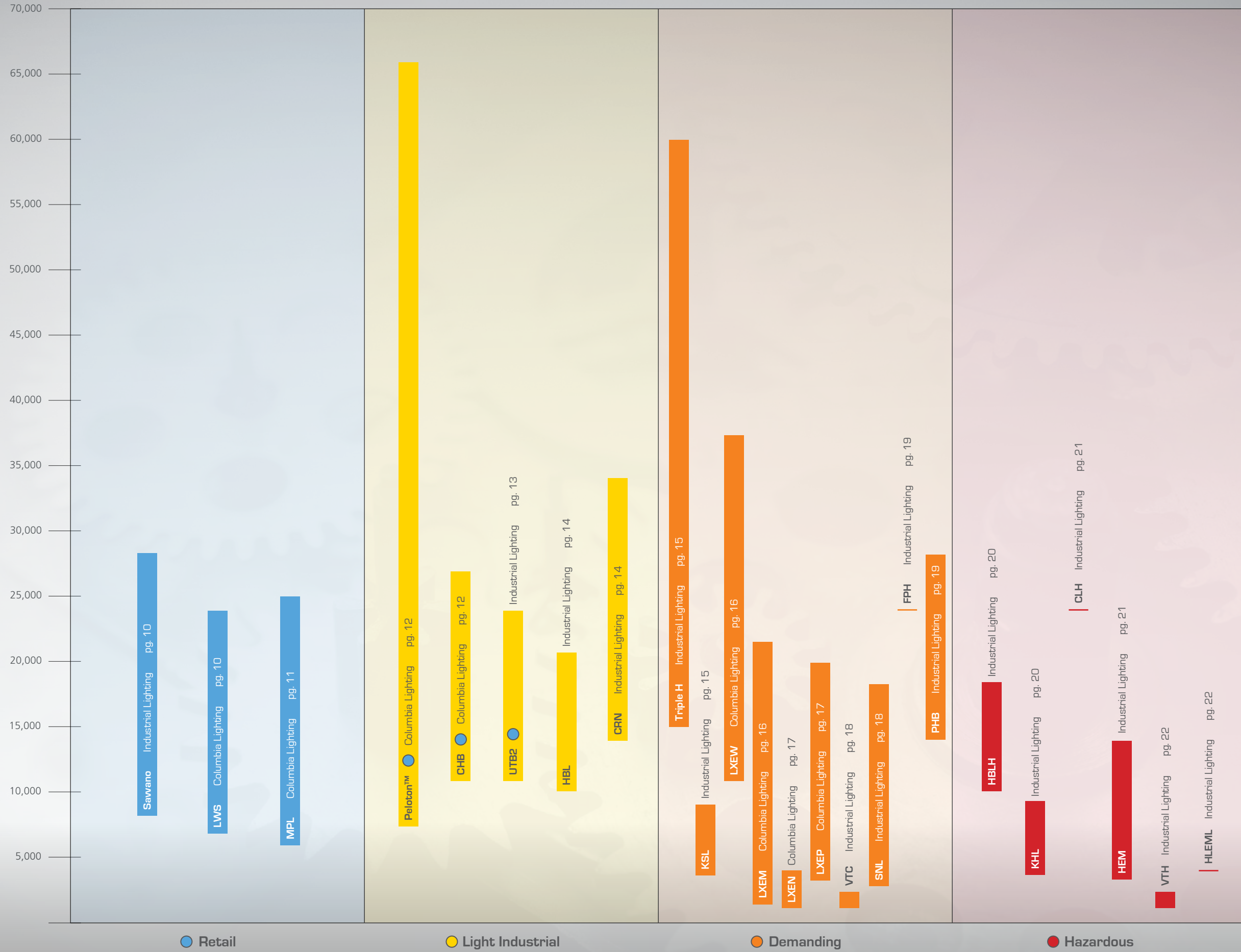
Emergency Products Suitable for Indoor use with Industrial Luminaires

Product	CSA/UL1598	UL
PLD	Damp	UL924
UFO-LED	Damp	UL924
LPS / LightPower™	Note 1	UL924 / UL2043 (for LG125)
LG / LiteGear™	Note 1	UL924 / UL2043 (T-Grid models)
Synchron	Note 1	UL924
LSN	Note 1	UL924 / UL1778
TRF	Note 1	UL924

Note 1: Inverters to be installed indoors for backing up fixtures located in all types of environments/applications.

CATEGORIES

# LUMENS



● Retail

● Light Industrial

● Demanding

● Hazardous

# LUMINAIRES

# LUMENS



# SAVVANO

Decorative High Bay

LUMEN RANGE	WATTAGE RANGE	LUMENS PER WATT RANGE
8,000- 28,000	73-219	99-123

### FEATURES

- Ten color accent options
- 80 or 90 CRI
- Multiple lensing and optic configurations
- Up to 123 lumens per watt

### CERTIFICATIONS

- CSA Listed to UL 1598
- Damp location

### APPLICATIONS

- Fitness gyms
- Schools
- Retail
- Decorative high bay locations



# LWS

16" x 24" Suspended High Bay/Low Bay

LUMEN RANGE	WATTAGE RANGE	LUMENS PER WATT RANGE
7,361-24,788	59-174	116-154

### FEATURES

- Aircraft cable hanging system or pendant mount bracket available
- Long-life, 60,000 hour LEDs at L80 reduce life cycle maintenance costs
- Four LED color choices and 83 CRI
- Diffuse wrap lens available

### CERTIFICATIONS

- CSA Listed to UL 1598
- Damp location
- UL 2108
- UL 924 on emergency equipped fixtures
- DLC® Qualified\*

### APPLICATIONS

- Industrial and retail
- Aisle and open areas



# MEGAPLANE™

MPL Industrial High Bay/Low Bay

LUMEN RANGE	WATTAGE RANGE	LUMENS PER WATT RANGE
6,000-25,000	49-192	106-140

### FEATURES

- Linear hanging fixture in 4' and 8'
- Long-life, 60,000 hour LEDs at L80 (up to 150,000 projected life) reduce life cycle maintenance costs
- 80 CRI standard and 90 CRI optional
- Optional decorative frosted drop lens

### CERTIFICATIONS

- CSA Listed to UL 1598
- Damp location
- UL 924 on emergency equipped fixtures
- UL 2108
- DLC® Qualified\*

### APPLICATIONS

- Racks, stacks and aisles
- Dealership showrooms



\*DesignLights Consortium® (DLC) qualified. Please refer to the DLC website for specific product qualifications at [www.designlights.org](http://www.designlights.org)





## PELTON™

High Performance High Bay

LUMEN RANGE	WATTAGE RANGE	LUMENS PER WATT RANGE
7,851-66,210	49-410	146-177

### FEATURES

- Uplight options from 1,000 to 4,000 lumens
- -40°C (-40°F) up to 65°C (149°F) ambient operation
- UL 924 with 10W and 20W emergency battery pack options
- NX Distributed Intelligence™ options

### CERTIFICATIONS

- CSA Listed to UL 1598
- UL 924
- UL 2108
- Damp location
- DLC® Qualified\*

### APPLICATIONS

- Warehouses
- Gymnasiums
- Convention centers
- Large open commercial spaces



## CHB

Linear High Bay

LUMEN RANGE	WATTAGE RANGE	LUMENS PER WATT RANGE
11,380-27,522	88-213	128-131

### FEATURES

- 0-10V dimming to 10%
- -20°C up to 50°C ambient operation
- Universal voltage standard (120-277V); 347V, 480V optional
- On/off and dimming sensors available
- Optional battery backup
- Multiple cord and plug options

### CERTIFICATIONS

- UL 1598
- Damp location
- DLC® Qualified\*

### APPLICATIONS

- Warehouses
- Gymnasiums
- Manufacturing and production areas
- Large open commercial spaces



## UTILIBAY™

UTB2 High Bay

LUMEN RANGE	WATTAGE RANGE	LUMENS PER WATT RANGE
12,000-24,000	76-168	94-170

### FEATURES

- Symmetrical design for consistent installed results
- Five reflector options
- Three optional lenses to meet your shielding needs
- Optional battery backup
- NX Distributed Intelligence™ options

### CERTIFICATIONS

- CSA Listed to UL 1598
- Damp location
- UL 924 on emergency equipped fixtures
- DLC® Qualified\*

### APPLICATIONS

- Warehouses
- Gymnasiums
- Light manufacturing
- Retail



\*DesignLights Consortium® (DLC) qualified. Please refer to the DLC website for specific product qualifications at [www.designlights.org](http://www.designlights.org)





**HBL**  
High Bay

LUMEN RANGE	WATTAGE RANGE	LUMENS PER WATT RANGE
10,000-21,000	112-169	91-100

**FEATURES**

- Custom engineered LED optics for evenly distributed light
- Rugged cast aluminum design
- Rated -40°C up to 55°C ambient
- Aisle, narrow and wide distributions
- 5 available mounting options

**CERTIFICATIONS**

- CSA Listed to UL 1598
- Damp location
- IP56

**APPLICATIONS**

- Industrial and hazardous locations (HBLH version)
- Gymnasiums
- Warehouses



**CRN**  
Wet Location High Bay

LUMEN RANGE	WATTAGE RANGE	LUMENS PER WATT RANGE
14,000-34,000	100-238	126-144

**FEATURES**

- Thermally separated electronic and LED heat-sink design
- Standard clear tempered glass or optional frosted polycarbonate lens
- Aluminum, clear or diffuse reflector options
- Optional integrated sensor

**CERTIFICATIONS**

- cULus to UL 1598
- Wet location
- IP65
- DLC® Qualified\*

**APPLICATIONS**

- Heavy industrial
- Warehouses
- Gymnasiums
- Garden centers



**TRIPLE H**  
High Bay / Low Bay

LUMEN RANGE	WATTAGE RANGE	LUMENS PER WATT RANGE
15,000-60,000	162-436	111-153

**FEATURES**

- High ambient - rated for 65°C
- High output - up to 60,000lm
- High efficacy - up to 139 lumens per watt
- Modular design with flexible optical choices
- Four extruded acrylic lens options or no lens for maximum efficacy

**CERTIFICATIONS**

- CSA Listed to UL 1598
- Wet location
- DLC® Qualified\*

**APPLICATIONS**

- Heavy industrial
- Warehouses
- Gymnasiums
- Airplane hangers



**KSL**  
Enclosed and Gasketed Severe Location

LUMEN RANGE	WATTAGE RANGE	LUMENS PER WATT RANGE
4,500-9,000	43-86	99-105

**FEATURES**

- Designed for harsh applications
- Three distinct distributions: Type V Square, Type V Rectangle, Narrow
- Modular design provides 6 mounting options

**CERTIFICATIONS**

- CSA Listed to UL 1598
- Wet location

**APPLICATIONS**

- Corrosive and harsh
- Chemical
- Marine
- Food processing



\*DesignLights Consortium® (DLC) qualified. Please refer to the DLC website for specific product qualifications at [www.designlights.org](http://www.designlights.org)







## LXEW

Wide Enclosed and Gasketed High Bay

LUMEN RANGE	WATTAGE RANGE	LUMENS PER WATT RANGE
11,079-33,099	91-328	108-137

### FEATURES

- 4' fiberglass housing with F1 weatherability rating
- 1500 PSI High Pressure Hose Down rating
- IK10 rated with polycarbonate lens
- Emergency battery pack available
- Occupancy sensor available

### CERTIFICATIONS

- CSA listed to UL 1598
- IP65, IP66, IP67
- Wet Listed
- UL Sanitation Certified per NSF Standards
- DLC® Qualified\*

### APPLICATIONS

- Livestock buildings
- Food processing
- Cold storage
- Car wash



## LXEM

Enclosed and Gasketed Luminaire

LUMEN RANGE	WATTAGE RANGE	LUMENS PER WATT RANGE
2,145-22,473	21-183	97-143

### FEATURES

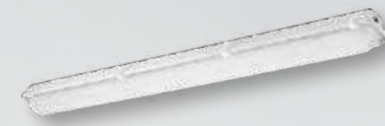
- Long life 60,000 hour LEDs at L80 for reduced lumen maintenance
- IP65 and IP67 standard; IP66 when ordered with polyacetal (POM) latches
- Available in 2', 4', or 8' lengths
- Serves rugged to severe conditions as well as food service areas

### CERTIFICATIONS

- CSA listed to UL 1598
- Wet location
- UL Sanitation Certified per NSF Standards
- DLC® Qualified\*

### APPLICATIONS

- Livestock buildings
- Food processing
- Car wash



## LXEN

Narrow Enclosed and Gasketed Luminaire

LUMEN RANGE	WATTAGE RANGE	LUMENS PER WATT RANGE
2,000-4,300	18-37	102-122

### FEATURES

- Available in 4' length
- Narrow housing design for applications with limited space
- IP65 and IP67 standard, IP66 when ordered with polyacetal latches
- Four LED color choices

### CERTIFICATIONS

- CSA
- IP Rated
- UL 1598
- UL 2108

### APPLICATIONS

- Livestock buildings
- Food processing
- Car wash



## LXEP

Parking Garage

LUMEN RANGE	WATTAGE RANGE	LUMENS PER WATT RANGE
2,900-19,700	27-204	87-116

### FEATURES

- Wide-angle light for indoor parking garage applications
- IP65, 66, 67 all models
- Clear or frosted acrylic lens
- Emergency battery pack optional

### CERTIFICATIONS

- CSA to UL 1598
- IP rated
- DLC® Qualified\*

### APPLICATIONS

- Parking garages



\*DesignLights Consortium® (DLC) qualified. Please refer to the DLC website for specific product qualifications at [www.designlights.org](http://www.designlights.org)





## VTC

LED Vaportite

LUMEN RANGE	WATTAGE	LUMENS PER WATT RANGE
1,402-1,940	27	50-74

### FEATURES

- Low-copper alloy die-cast aluminum
- Enclosed and gasketed
- Frosted glass globe
- 5000K
- Multiple mounting configurations

### CERTIFICATIONS

- CSA listed to UL 1598
- Wet location

### APPLICATIONS

- Catwalks
- Manufacturing areas
- Refineries



## SNL

Sanitube Food Service Strip

LUMEN RANGE	WATTAGE RANGE	LUMENS PER WATT RANGE
3,200-18,000	32-190	92-100

### FEATURES

- Low wattage LED Sanitube ideal for many food processing applications
- Internal optical diffuser for uniform light distribution
- Available in 4' and 8' lengths
- One-piece non-metallic housing
- Stainless steel hardware
- NSF Splash Zone rating
- Suspended, ceiling, or wall mount

### CERTIFICATIONS

- IP65, IP66
- CSA listed to UL 1598
- Wet location
- DLC® Qualified\*

### APPLICATIONS

- Food processing
- Cold storage
- Commercial kitchen
- Breweries



## FPH

Food Processing High Bay

LUMENS	WATTAGE	LUMENS PER WATT
24,000	220	109

### FEATURES

- Sealed LED fixture for food processing facilities
- Smooth exterior with no exposed fasteners
- Cast aluminum construction
- Replaces 400w PSMH one-for-one
- Four lens options

### CERTIFICATIONS

- IP66
- CSA listed to UL 1598
- Wet Location
- UL Sanitation Certified per NSF Standards
- DLC® Qualified\*

### APPLICATIONS

- Food processing
- Cold storage
- Commercial kitchen
- Breweries



## PHB

The Performance High Bay

LUMEN RANGE	WATTAGE RANGE	LUMENS PER WATT RANGE
14,000-28,000	103-216	110-141

### FEATURES

- Up to a full 65°C with no fold back
- Good side light and up light on the SPC and DLR optics
- 5 lens options
- 4 mounting options
- Optional occupancy sensor

### CERTIFICATIONS

- CSA listed to UL 1598
- Wet location
- IP66

### APPLICATIONS

- Heavy industrial
- Warehouse
- Cold storage
- Steel mills



\*DesignLights Consortium® (DLC) qualified. Please refer to the DLC website for specific product qualifications at [www.designlights.org](http://www.designlights.org)





## HBLH

Classified High Bay

LUMEN RANGE	WATTAGE RANGE	LUMENS PER WATT RANGE
10,000-17,000	112-169	91-101

### FEATURES

- Class I, Division 2 - Groups A, B, C & D
- High performance LED design
- Specialized thermal management allows from -40°C up to 55°C ambient temperature ratings
- 5 available mounting options
- Aisle, narrow, and wide distributions

### CERTIFICATIONS

- CSA listed to UL 1598
- UL844
- Wet location
- UL Sanitation Certified per NSF Standards
- IP66 available
- DLC® Qualified\*
- C1D2, Groups A, B, C & D

### APPLICATIONS

- Industrial and hazardous locations
- Gymnasiums
- Warehouses



## KHL

Kemlux III Hazardous Location Fixture

LUMEN RANGE	WATTAGE RANGE	LUMENS PER WATT RANGE
4,500-9,000	43-86	99-105

### FEATURES

- Custom engineered LED optics providing optimally controlled and evenly distributed light
- Three LED count options: 18, 24, 36
- Three distinct distributions: Type V Square, Type V Rectangle, Narrow
- Modular design provides 6 mounting options
- T code: T6

### CERTIFICATIONS

- CSA listed to UL 1598
- UL 1598
- UL 844
- C1D2, Groups A, B, C & D

### APPLICATIONS

- Chemical
- Petrochemical
- Marine
- Power plants



## CLH

Classified Location High Bay

LUMENS	WATTAGE	LUMENS PER WATT
24,000	220	109

### FEATURES

- Sealed LED fixture for hazardous locations
- Smooth exterior with no exposed fasteners
- Multiple acrylic and polycarbonate lens options

### CERTIFICATIONS

- CSA listed to UL 1598
- Wet location
- IP66

### APPLICATIONS

- Manufacturing
- Heavy industrial



## HEM

Enclosed and Gasketed Luminaire

LUMEN RANGE	WATTAGE RANGE	LUMENS PER WATT RANGE
4,850-16,300	47-136	114-123

### FEATURES

- LED hazardous location enclosed and gasketed
- Available in 4' or 8' lengths
- Fiberglass housing with F1 weatherability rating

### CERTIFICATIONS

- IP65, IP66 and IP67
- CSA listed to UL 1598
- UL Sanitation (to NSF Standards)
- C1D2, Groups A, B, C & D
- DLC® Qualified\*

### APPLICATIONS

- Ethanol refineries
- Manufacturing facilities
- Wastewater treatment facilities
- Power generation facilities



\*DesignLights Consortium® (DLC) qualified. Please refer to the DLC website for specific product qualifications at [www.designlights.org](http://www.designlights.org)



## VTH

Hazardous Location LED Vaportite

LUMEN RANGE	WATTAGE	LUMENS PER WATT RANGE
1,402-1,940	25	50-78

### FEATURES

- Low copper alloy die-cast aluminum
- Multiple mounting configurations
- Frosted glass globe
- -30°C to 40°C
- 5000K

### CERTIFICATIONS

- CSA to UL 1598
- Wet location
- UL 844, C1D2, Groups A, B, C, & D

### APPLICATIONS

- Catwalks
- Manufacturing facilities
- Refineries
- Hazardous locations



## HLEML

Explosion-Proof LED

LUMENS	WATTAGE	LUMENS PER WATT
4,000	45	64

### FEATURES

- Designed for classified areas
- Specialized thermal management allows from -40°C to 55°C ambient temperature ratings
- 5 available mounting options
- Clear or fluted globe

### CERTIFICATIONS

- C1D1, C1D2, Groups C & D
- Class I, Zone 1 & 2, Groups IIB, IIA
- C2D1, C2D2, Groups E, F, & G
- C3D1, C3D2
- NEMA 3, 4, 4X

### APPLICATIONS

- Manufacturing plants
- Ammunition facilities
- Refineries
- Tank farms





## EV4R

Recessed Ceiling Mount Emergency Light



### FEATURES

- Flame-rated, UV stable thermoplastic housing
- Choice of round or rectangular trim-plate in white or black finish
- 4 LEDs housed within an aluminum heat-sink and adjustable optic assembly
- Individual LEDs are driven at 1 watt each for 88 lumens per LED

### CERTIFICATIONS

- UL 924 Listed
- Damp location
- NFPA 101
- NFPA 70
- IC Rated

### APPLICATIONS

- Commercial hallways
- Schools
- Architectural areas



## SEMPRA<sup>®</sup> SE

Die Cast Exit Sign



### FEATURES

- AC or Emergency operation with optional Spectron<sup>®</sup> Self-Test/Self-Diagnostics
- Red or green letters, white or black finish, single or double face
- Accepts 120/277VAC input at 60Hz
- Special Wording option available

### CERTIFICATIONS

- UL 924 Listed
- Damp location
- NFPA 101
- NFPA 70

### APPLICATIONS

- Schools
- Hospitals
- Gymnasiums



## EVE

Thermoplastic Exit Sign



### FEATURES

- AC only or Emergency operation with optional Spectron<sup>®</sup> Self-Test/Self-Diagnostics
- Red or green letters, white or black finish, single or double face
- Accepts 120/277VAC input at 60Hz
- Special Wording options

### CERTIFICATIONS

- UL 924 Listed
- Damp location
- NFPA 101
- NFPA 70

### APPLICATIONS

- Schools
- Offices
- Commercial properties



## EVC

Thermoplastic Combination Exit/Emergency Light



### FEATURES

- Fully adjustable Integral LED lamp-heads
- Optional Self-Test/Self-Diagnostics
- Red or green letters, white or black finish
- Accepts 120/277VAC input at 60Hz

### CERTIFICATIONS

- UL 924 Listed
- Damp location
- NFPA 101
- NFPA 70

### APPLICATIONS

- Schools
- Offices
- Commercial properties





## EVHC

Thermoplastic High Lumen Emergency Light



Other categories: Emergency Lights

### FEATURES

- Fully adjustable lamp-heads
- High lumen output for up to 83' spacing
- Wall or ceiling mount in black or white finish
- Self-Test/Self-Diagnostics option

### CERTIFICATIONS

- UL 924 Listed
- Damp location
- NFPA 101
- NFPA 70

### APPLICATIONS

- Schools
- Offices
- Commercial properties



## SEWL

Wet Location/NEMA 4X Die-Cast Exit Sign



### FEATURES

- AC or Emergency Operation
- Red or green letters, white or black finish, single or double face
- Spectron® Self-Test/Self-Diagnostic circuitry standard

### CERTIFICATIONS

- UL 924 Listed
- Wet location
- UL Type 4X
- IP66 Ingress Protection
- NFPA 70
- NFPA 101
- OSHA Illumination Standards
- C1D2 option (Jan 2020)

### APPLICATIONS

- Parking garages
- Gymnasiums
- Apartment complexes
- Prisons



## DYNAMO

NEMA 4X / C1D2 / C2D1 Industrial Emergency Light



### FEATURES

- Sealed and gasketed thermoplastic housing
- Fully adjustable high output LED lamp heads
- Up to 81' spacing
- Optional heater for cold temperature applications

### CERTIFICATIONS

- UL 924 Listed
- Wet Location Listed
- 844 Listed
- NEMA 4X rated
- UL Sanitation Certified with FP option
- C1D2 and C2D1 options

### APPLICATIONS

- Manufacturing plants
- Warehouses
- Refineries
- Tank farms



## EVE4X

Wet Location/NEMA 4X Exit Sign



### FEATURES

- Enclosure and cover is constructed of impact-resistant polycarbonate
- LED based exit sign for wall mount only
- AC or Emergency with optional Self-Test/Self-Diagnostics
- Long-Life Nickel Metal Hydride Battery
- Full recharge within 24 hours

### CERTIFICATIONS

- UL 924 Listed
- Wet/damp location
- NEMA 4X

### APPLICATIONS

- Corrosive environments
- Hose down locations
- Parking decks





## HLEBS-HEXA100

Emergency Lighting System with Exit Accessory

### FEATURES

- Integral Push-to-Test Station and AC-On indicator
- Only "ON" in loss of normal power
- 23W capacity requiring 20W of load (2 lamp-heads)
- All holes and Hub size are 3/4"

### CERTIFICATIONS

- UL 924 Emergency Listed
- UL 844 Hazardous Location Listed

### APPLICATIONS

- Refineries
- Tank farms
- Warehouses



## EBB-VEXA400

Emergency Light with Exit Housing Accessory

### FEATURES

- Self-contained hazardous location
- Pendant, wall or ceiling mounting
- Fully automatic charger with low voltage disconnect
- Remote test station included

### CERTIFICATIONS

- UL 924 Emergency Listed (Emergency Lighting)
- UL 844 Hazardous Location Listed

### APPLICATIONS

- Manufacturing plants
- Warehouses
- Refineries
- Tank farms



## EBB

Hazardous Location Emergency Light

### FEATURES

- Self-contained Battery/Charger assy. in the lamp-head
- 60W capacity powers 3 integral 20W MR-16 Halogen lamps for 90 minutes
- Pendant, wall or ceiling mounting
- Includes Remote Test Station
- Lamp-head in globe type with optional EXIT accessory

### CERTIFICATIONS

- UL 924 Emergency
- UL 844 Hazardous Location
- C1D1, C1D2
- C2D1, C2D2
- C3D1, C3D2

### APPLICATIONS

- Manufacturing plants
- Warehouses
- Refineries
- Tank farms



## HLEBS

Emergency Lighting System

### FEATURES

- Battery/Charger assy. provides 23W
- Powers 2 each 10W LED lamp-heads for 90 minutes
- Available with Direct Mount or Remote Heads
- Integral Push-to-Test Station and AC-On indicator
- Lamp-heads in spot or globe with over 900 lumens each

### CERTIFICATIONS

- UL 924 Emergency
- UL 844 Hazardous Location
- C1D1, C1D2
- C2D1, C2D2
- C3D1, C3D2

### APPLICATIONS

- Manufacturing plants
- Warehouses
- Refineries
- Tank farms





## PG

Wet Location Emergency Light

### FEATURES

- Four long-life, high-output LEDs
- LEDs configured in redundant pairs
- 90 minute emergency operation
- No heads to aim, no adjustments to make

### CERTIFICATIONS

- UL 924 Listed
- Wet Location Listed
- NFPA 101
- NFPA 70

### APPLICATIONS

- Entrance/exit ways
- Perimeter walkways
- Exterior path of egress
- Parking deck



## DPL-P & DPL-PM

Exit Sign



Other categories: General Damp, Exits

### FEATURES

- DPL photoluminescent exit signs do not require AC or electrical power
- UL listed legible viewing distances of 50', 75' and 100'
- DPL-P units constructed of ABS thermoplastic
- DPL-PM units made of a high-density polyethylene (HDPE) with aluminum face and back
- All signs have a 25-year lifecycle

### CERTIFICATIONS

- UL 924 Listed
- NFPA 101, NFPA 70
- OSHA

### APPLICATIONS

- External illumination charge can be from natural or artificial light sources
- The signs require a continuous minimum of 5-foot candles of external illumination at all times of building occupancy to maintain the charge
- Indoor or outdoor use



## DYNC

NEMA 4X Industrial



Combination Exit/LED Emergency Light

### FEATURES

- Heavy duty die-cast construction with polycarbonate shields
- Fully adjustable shielded LED lamp heads
- Up to 71' spacing
- Optional heater for cold temperature applications
- Available in C1D1 (January 2020)

### CERTIFICATIONS

- UL 924 Listed
- NEMA 4, 4X Rated
- UL Sanitation Certified
- CEC-T20 Compliant
- C1D2 option

### APPLICATIONS

- Wet location or hose down industrial settings
- Food processing
- Chemical plants
- Manufacturing facilities







## PLD

Battery Pack

### FEATURES

- 90 or 120 minute backup
- 10W, 9W and 7W designs
- Constant lumen output
- Universal 120-277V input
- Auto-sensing Vf output

### CERTIFICATIONS

- UL 924 Listed
- Damp location
- NFPA 101
- NFPA 70
- UL 1310
- CSA C22.2
- CEC Title 20

### APPLICATIONS

- Retail
- Offices
- Commercial properties



## UFO-LED

LED Battery Pack

### FEATURES

- 25W output capacity
- 90 minutes of full lumen output
- Auto Select 120/277VAC Input/Output
- Compatible with Switched and Unswitched Fixtures
- Remote Test Switch included standard

### CERTIFICATIONS

- UL 924 Listed
- Damp Location Listed
- NFPA 101
- NFPA 70
- CSA 22.2

### APPLICATIONS

- Retail
- Offices
- Commercial properties



## LIGHTPOWER™

Single Phase Micro Inverters

### FEATURES

- 20W-55W output capacity
- Surface, recessed, T-grid mount
- Installed up to 1000' from lighting load
- Full lumen output

### CERTIFICATIONS

- UL 924 Listed
- UL 2043 (T-grid models)
- NFPA 101
- NFPA 70

### APPLICATIONS

- Indoor installation for backing up commercial, industrial, wet location and hazardous location fixtures



## LITEGEAR®

Single Phase Inverters

### FEATURES

- 125 and 250 VA output capacity
- Surface, recessed, and T-grid mount
- Installed up to 1000' from lighting load
- Full lumen output

### CERTIFICATIONS

- UL 924 Listed
- UL 2043 (T-grid models)
- NFPA 101
- NFPA 70
- CEC Title 20

### APPLICATIONS

- Indoor installation for backing up commercial, industrial, wet location and hazardous location fixtures





# SYNCHRON

Small Single Phase Inverters

### FEATURES

- 400-2100W output capacity
- Uninterruptable, no-break switching
- 98% efficiency
- Self-Diagnostics
- Multiple output breakers

### CERTIFICATIONS

- UL 924 Listed
- NFPA 101
- NFPA 70

### APPLICATIONS

- Indoor installation for backing up commercial, industrial, wet location and hazardous location fixtures



# LSN

Medium Single Phase Inverters

### FEATURES

- 1.0-17.5kVA/KW output capacity
- Self-Test/ Self-Diagnostics complies with life safety requirements
- RS232 Communication
- Seismic qualified options up to 20 output breakers
- Up to 20 output breakers

### CERTIFICATIONS

- UL 924 Listed
- UL 1770 (alternate runtimes)
- ANSI C62.41/.45
- NFPA 101
- NFPA 70

### APPLICATIONS

- Indoor installation for backing up commercial, industrial, wet location and hazardous location fixtures



# TRF

Large Three-Phase Inverter

### FEATURES

- 10-125kVA output capacity
- Self-Test/ Self-Diagnostics
- Intuitive GUI display
- Pre-mounted and wired batteries
- Seismic rating on 65-125kVA; optional on 15-60kVA
- Form C monitoring contacts
- Internal maintenance bypass switch

### CERTIFICATIONS

- UL 924 Listed
- IBC 2015 (OSHPD Certified)
- NFPA 101
- NFPA 70

### APPLICATIONS

- Internal installation for backing up commercial industrial wet location and hazardous location fixtures



# HAZARDOUS (CLASSIFIED) LOCATION INFORMATION AND DEFINITIONS

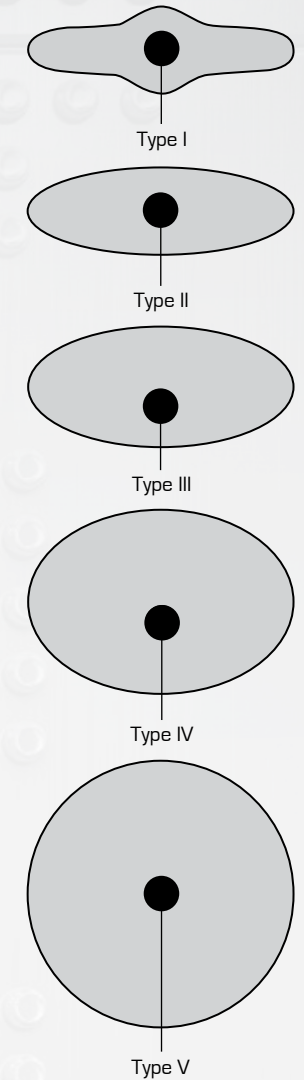
## ENCLOSURE TYPES

Enclosure Type	Intended Use	Equivalent IP Code Rating
1	Indoor use, limited amounts of falling dirt	10
3	Outdoor use, rain, sleet, wind blown dust, external formation of ice	54
3R	Outdoor use, rain, sleet, external formation of ice	14
3S	Outdoor use, rain, sleet, wind blown dust, external mechanisms operable when ice laden	54
4	Indoor or outdoor use, wind blown dust and rain, splashing water, hose directed water, external formation of ice	66
4X	Indoor or outdoor use, wind blown dust and rain, splashing water, hose directed water, corrosion, external formation of ice	66
5	Indoor use, settling airborne dust, falling dirt, noncorrosive liquids	52
6	Indoor or outdoor use, hose directed water, temporary submersion, external formation of ice	67
6P	Indoor or outdoor use, hose directed water, prolonged submersion, external formation of ice	67
7	Indoor use, Class I, Division 1, Groups A, B, C, and D hazardous locations, air-break equipment	
8	Indoor use, Class I, Division 1, Groups A, B, C, and D hazardous locations, oil-immersed equipment	
9	Indoor use, Class II, Division 1, Groups E, F, and G hazardous locations, air-break equipment	
10	Mining applications	
12	Indoor use, circulating dust, falling dirt, dripping	52
12k	Indoor use, circulating dust, falling dirt, dripping noncorrosive liquids, provided with knockouts	52
13	Indoor use, lint, dust, spraying of water, oil, and non corrosive coolant	54

## INGRESS PROTECTION (IP) CODES

First Number		Second Number	
0	No Protection	0	No Protection
1	Objects Greater than 50mm	1	Vertically Dripping Water
2	Objects Greater than 12mm	2	75° - 90° Dripping Water
3	Objects Greater than 2.5mm	3	Sprayed Water
4	Objects Greater than 1mm	4	Splashed Water
5	Dust Protected	5	Water Jets
6	Dust Tight	6	Powerful Water Jets
		7	Effects of Immersion
		8	Indefinite Immersion
		9k	Close high jets and high temperatures

## ANSI/IES LATERAL LIGHT DISTRIBUTION



## NEMA AND ANSI/IES FLOODLIGHT BEAM DESCRIPTIONS

Asymmetrical beam floodlights may be designated by a combination of horizontal and vertical beam spreads in that order; a floodlight with a horizontal beam spread of 75 degrees (Type 5) and a vertical beam of 35 degrees (Type 3) would be designated as Type 5x3 floodlight.

Beam Spread Degrees	NEMA Type
10 up to 18	1
18 up to 29	2
29 up to 46	3
46 up to 70	4
70 up to 100	5
100 up to 130	6
130 and up	7

# HAZARDOUS (CLASSIFIED) LOCATION INFORMATION AND DEFINITIONS

## CLASSES

Class	Description
Class I, Gases	Areas where inflammable gases or vapors may be present in sufficient quantities to produce explosive or flammable mixture.
Class II, Dust	Areas where combustible dust are present.
Class III, Fibers	Areas where ignitable fibers and flyings are present in sufficient quantities to produce ignitable mixtures.

## IEC HAZARDOUS CLASSIFICATIONS

IEC publication 79-10 defines the guidelines for classifying hazardous areas. Instead of using Classes and Divisions, the term Zones is used as defined below.

Zone 0	Zone 0 is an area in which an explosive gas-air mixture is continuously present or present for long periods. (This is comparable to Class I, Division 1 areas as defined by the National Electric Code). Generally, most industrial users try to keep all electrical equipment out of Zone 0 areas. The only equipment approved for use in Zone 0 applications is intrinsically safe equipment.
Zone 1	Zone 1 is defined as an area in which an explosive gas-air mixture is likely to occur in normal operations. Zone 1 is also comparable to Class I, Division 1 applications.
Zone 2	Defined as an area in which an explosive gas-air mixture is not likely to occur and if it does, it is only for a short period of time. (This is comparable to a Class I, Division 2 location area as defined by the NEC.)
Zone 20	A place in which an explosive dust atmosphere is continually present.
Zone 21	A place in which an explosive dust atmosphere is likely to occur in normal operation occasionally.
Zone 22	A place in which an explosive dust atmosphere is not likely to occur in normal operation, but if it does only occurs for short periods.

Note: Class III locations (fibers and flyings) are covered in Zone 10, 21 + 22 areas.

## DIVISIONS

Division	Description
Division 1, Always Present	Areas where the hazardous condition is normally present either continuously or periodically.
Division 2, Not Normally Present	Areas where the hazardous condition is present due to accidental rupture, breakage or unusual faulty operation of a closed container or system.

## IEC/NEC COMPARISONS

Hazardous Material	NEC U.S. Standards	IEC Euronorm Standards
Gas or Vapor	Class I, Division 1	Zone 0 & Zone 1
	Class I, Division 2	Zone 2
Dust	Class II, Division 1	Zone 20
	Class II, Division 2	Zone 21
Fibers or Flyings	Class III, Division 1	Zones 20 + 21
	Class III, Division 2	Zone 22

## GROUPS

Class I	Description
Group A	Acetylene
Group B	Hydrogen
Group C	Ether
Group D	Gasoline

Class II	Description
Group E	Metal Dust
Group F	Coal Dust
Group G	Grain Dust

## TEMPERATURE (T-CODE) MARKINGS

Maximum Operating Temperatures		Temperature (T) Code or Identification Number*
°C	°F	
450	840	T1
300	572	T2
280	536	T2A
260	500	T2B
230	446	T2C
215	419	T2D
200	392	T3
180	356	T3A
165	329	T3B
160	320	T3C
135	275	T4
120	248	T4A
100	212	T5
85	185	T6

\* Based on 40°C (104°F) ambient

## HIGH BAY/HIGH TEMPERATURE



## FLOODLIGHTS



## C1D2 (HAZARDOUS)



## NFS, IP, NEMA (WASH DOWN)



## LIFE SAFETY



## INVERTERS



## C2D1 (HAZARDOUS)



\* Available in January 2020



**HUBBELL**  
Lighting

- ALERA LIGHTING
- ARCHITECTURAL AREA LIGHTING
- BEACON PRODUCTS
- COLUMBIA LIGHTING
- COMPASS
- DUAL-LITE
- HUBBELL CONTROL SOLUTIONS
- HUBBELL INDUSTRIAL LIGHTING
- HUBBELL OUTDOOR LIGHTING
- KIM LIGHTING
- KURT VERSEN
- LITECONTROL
- PRESCOLITE

701 Millennium Blvd. Greenville, SC 29607  
Tel 864.678.1000  
[www.hubbellighting.com](http://www.hubbellighting.com)

HIL\_0285 10/19

Copyright © 2019 Hubbell Lighting. All rights reserved. Please refer to online specifications for most up-to-date content as specifications are subject to change without notice.