



CIRCUIT BREAKER ENCLOSURES



FEATURES-SPECIFICATIONS



Applications

- Locations such as petroleum refineries, chemical and petroleum plants with indoor and outdoor processes
- Motor control and circuit protection in locations made hazardous due to the presence of flammable gases or vapors, combustible dust, or easily ignitable fibers and flyings, and areas which are subject to corrosion, weather and dampness
- To provide overcurrent and short circuit protection of service entrance, feeder or branch circuits, lighting, heating, appliance and motor circuits
- To provide line disconnect means

Features

- Copper-free, cast aluminum construction (less than 4/10 of 1%).
- High strength, lighter in weight, corrosion resistant.
- Hinged Cover is standard.
- More Wiring Room – Meets the latest NEC/CEC wire bending requirements for circuit breaker enclosures.

- Ductile Mounting Lugs – Lugs are made of ductile aluminum alloy to adjust to irregular mounting surfaces without damage to enclosure.
- Universal Mounting Pan – Sheet aluminum pan is pre-drilled to facilitate easy field installation of major circuit breaker brands. Provisions for grounding supplied as standard.
- Conduit Openings Supplied – Standard conduit openings include power conduit top and bottom and a plugged opening suitable for field installation of drain and breather. Special conduit openings can be supplied at factory, or can be field installed.
- Breaker Handle – Provisions for lock “ON” or “OFF” positions with up to three padlocks. Spring loaded to prevent damage of breaker toggle and provides positive handle alignment. “O” ring on shaft to prevent water seeping into enclosure.
- Recessed Flange Notches – Flanges are notched to allow for easier cover opening with prying instrument without flange damage.

Class I, Div. 1 & 2, Groups B, C, D
Class I, Zones 1 & 2, Groups IIB+H₂, IIA
Class II, Div. 1 & 2, Groups E, F, G
Class III, Div. 1 & 2
NEMA 3, 4, 4x, 7 (B, C, D), 9 (E, F, G)

UL #UL1203-Explosion Proof and Dust-Ignition-Proof Electrical Equipment For Use In Hazardous (Classified) Locations. File #E83969

SP #C22.2 NO. 30-M1986-Explosion Proof Enclosures For Use In Class I Hazardous Locations. File #LR11714

- Gasketed Flange – Nitrile (BUNA-N) “O” ring gasket is located inside cover bolt circle to prevent water seeping into enclosure.
- Quick Release, Captivated Cover – Bolts of 316 Grade Stainless Steel Triple lead bolts require only 3-1/2 turns to disengage.

Material/Finish

- Enclosure: Copper-free, cast aluminum (less than 4/10 of 1%)
- Aluminum lacquer paint finish is standard, with special epoxy finish available. See page DE6
- Cover Bolts: 316 grade stainless steel
- Mounting Pan: Sheet aluminum
- Handle Mechanism: Cast aluminum with stainless steel shaft and hardware.
- Hinges: Aluminum with stainless steel hardware.



DISTRIBUTION EQUIPMENT



FEATURES-SPECIFICATIONS

B7C CIRCUIT BREAKER ENCLOSURES				
ENCLOSURE ONLY CATALOG NUMBER	WILL ACCEPT THE FOLLOWING CIRCUIT BREAKERS:			
	MANUFACTURER	FRAME SIZE	CIRCUIT BREAKER TYPE	MAX. AMP
B7CA	EATON/CUTLER HAMMER/WESTINGHOUSE	F	EHD, FDB, FD, HFD, FDC	100
	GENERAL ELECTRIC	E	TEB, TED, THED, TEL	100
	ITE - SIEMENS	ED	ED2, ED4, ED6, HED4, HED6	90
	SCHNIEDER/SQUARE D	H	HDL, HGL, HJL, FAL, FHL, FCL	100
	ABB	T1	T1N, T1S, T1H	100
B7CB	EATON/CUTLER HAMMER/WESTINGHOUSE	F	FDB, FD, HFD, FDC	150
	GENERAL ELECTRIC	E	TEB, TED, THED, TEL	150
	ITE - SIEMENS	ED	ED2, ED4, ED6, HED4, HED6	90
	SCHNIEDER/SQUARE D	H	HDL, HGL, HJL, FAL, FHL, FCL	150
	ABB	T1	T1N, T1S, T1H	150
B7CC	EATON/CUTLER HAMMER/WESTINGHOUSE	J	JD, JDB, JDC, HJD	250
	GENERAL ELECTRIC	F	TFJ, TFK, THFK, TFL	225
	SCHNIEDER/SQUARE D	J	JDL, JGL, JJL	250
	ITE - SIEMENS	FD	FXD6, FD6, HFD6, CFD6	250
	ABB	T3/T4	T3N, T3S, T3H, T4N, T4S, T4H	225/250
B7CD	EATON/CUTLER HAMMER/WESTINGHOUSE	K	DK, KDB, KD, HKD, KDC	400
	GENERAL ELECTRIC	J	TJJ, TJK, THJK	400
	ITE - SIEMENS	JD	JXD2, JXD6, JD6, HJD6, HHJD6, CJD6	400
	SCHNIEDER/SQUARE D	L	LDL, LGL	400
	ABB	T5	T5N, T5S, T5H	400
B7CE	EATON/CUTLER HAMMER/WESTINGHOUSE	L	LDB, LD, HLD, LDC	600
	GENERAL ELECTRIC	J	TJK, THJK	600
	ITE - SIEMENS	L	LXD6, LD6, HLD6, HHLD6, CLD6	600
	SCHNIEDER/SQUARE D	L	LDL, LGL	600
	ABB	T6	T6N, T6S, T6H	600
B7CF	EATON/CUTLER HAMMER/WESTINGHOUSE	N	ND, HND, NDC	1200
	GENERAL ELECTRIC	K	TKM, THKM	1200
	ITE - SIEMENS	MD/ND	MD, MXD, HMXD, HMD, CMD	800/1200
	SCHNIEDER/SQUARE D	P	PDL, PGL	1200
	ABB	T7	T7N, T7S, T7H	1200

NOTE: Enclosure includes mounting pan which is pre-drilled to accept circuit breakers illustrated above.

Mounting screw hardware for circuit breaker is not supplied with enclosure and must be furnished by supplier of circuit breaker.

*New generation Square 'D' circuit breakers G Frame, H Frame, J Frame, K Frame are not direct replacements for FAL, KAL, or MAG GUARD.



CIRCUIT BREAKER ENCLOSURES

B7C ENCLOSURE WITH CIRCUIT BREAKER INSTALLED										
BREAKER AMP TRIP	MAX. VOLTAGE	CATALOG NUMBER			CATALOG NUMBER			CATALOG NUMBER		
		CUTLER-HAMMER/EATON BREAKERS			SCHNIEDER/SQUARE D BREAKERS			ABB		
		FRAME	2 POLE	3 POLE	FRAME	2 POLE	3 POLE	FRAME	3 POLE	4 POLE
15	480	EHD	B7CA-WEHD-42015	B7CA-WEHD-43015	HDL	B7CA-SHDL-42015	B7CA-SHDL-43015	T1N	B7CA-AT1N-43015	B7CA-AT1N-44015
15	600	FDB	B7CA-WFDB-62015	B7CA-WFDB-63015	HDL	B7CA-SHDL-62015	B7CA-SHDL-63015	T1N	B7CA-AT1N-63015	B7CA-AT1N-64015
20	480	EHD	B7CA-WEHD-42020	B7CA-WEHD-43020	HDL	B7CA-SHDL-42020	B7CA-SHDL-43020	T1N	B7CA-AT1N-43020	B7CA-AT1N-44020
20	600	FDB	B7CA-WFDB-62020	B7CA-WFDB-63020	HDL	B7CA-SHDL-62020	B7CA-SHDL-63020	T1N	B7CA-AT1N-63020	B7CA-AT1N-64020
25	480	EHD	B7CA-WEHD-42025	B7CA-WEHD-43025	HDL	B7CA-SHDL-42025	B7CA-SHDL-43025	T1N	B7CA-AT1N-43025	B7CA-AT1N-44025
25	600	FDB	B7CA-WFDB-62025	B7CA-WFDB-63025	HDL	B7CA-SHDL-62025	B7CA-SHDL-63025	T1N	B7CA-AT1N-63025	B7CA-AT1N-64025
30	480	EHD	B7CA-WEHD-42030	B7CA-WEHD-43030	HDL	B7CA-SHDL-42030	B7CA-SHDL-43030	T1N	B7CA-AT1N-43030	B7CA-AT1N-44030
30	600	FDB	B7CA-WFDB-62030	B7CA-WFDB-63030	HDL	B7CA-SHDL-62030	B7CA-SHDL-63030	T1N	B7CA-AT1N-63030	B7CA-AT1N-64030
35	480	EHD	B7CA-WEHD-42035	B7CA-WEHD-43035	HDL	B7CA-SHDL-42035	B7CA-SHDL-43035	T1N	B7CA-AT1N-43035	B7CA-AT1N-44035
35	600	FDB	B7CA-WFDB-62035	B7CA-WFDB-63035	HDL	B7CA-SHDL-62035	B7CA-SHDL-63035	T1N	B7CA-AT1N-63035	B7CA-AT1N-64035
40	480	EHD	B7CA-WEHD-42040	B7CA-WEHD-43040	HDL	B7CA-SHDL-42040	B7CA-SHDL-43040	T1N	B7CA-AT1N-43040	B7CA-AT1N-44040
40	600	FDB	B7CA-WFDB-62040	B7CA-WFDB-63040	HDL	B7CA-SHDL-62040	B7CA-SHDL-63040	T1N	B7CA-AT1N-63040	B7CA-AT1N-64040
50	480	EHD	B7CA-WEHD-42050	B7CA-WEHD-43050	HDL	B7CA-SHDL-42050	B7CA-SHDL-43050	T1N	B7CA-AT1N-43050	B7CA-AT1N-44050
50	600	FDB	B7CA-WFDB-62050	B7CA-WFDB-63050	HDL	B7CA-SHDL-62050	B7CA-SHDL-63050	T1N	B7CA-AT1N-63050	B7CA-AT1N-64050
60	480	EHD	B7CA-WEHD-42060	B7CA-WEHD-43060	HDL	B7CA-SHDL-42060	B7CA-SHDL-43060	T1N	B7CA-AT1N-43060	B7CA-AT1N-44060
60	600	FDB	B7CA-WFDB-62060	B7CA-WFDB-63060	HDL	B7CA-SHDL-62060	B7CA-SHDL-63060	T1N	B7CA-AT1N-63060	B7CA-AT1N-64060
70	480	EHD	B7CA-WEHD-42070	B7CA-WEHD-43070	HDL	B7CA-SHDL-42070	B7CA-SHDL-43070	T1N	B7CA-AT1N-43070	B7CA-AT1N-44070
70	600	FDB	B7CA-WFDB-62070	B7CA-WFDB-63070	HDL	B7CA-SHDL-62070	B7CA-SHDL-63070	T1N	B7CA-AT1N-63070	B7CA-AT1N-64070
80	480	EHD	B7CA-WEHD-42080	B7CA-WEHD-43080	HDL	B7CA-SHDL-42080	B7CA-SHDL-43080	T1N	B7CA-AT1N-43080	B7CA-AT1N-44080
80	600	FDB	B7CA-WFDB-62080	B7CA-WFDB-63080	HDL	B7CA-SHDL-62080	B7CA-SHDL-63080	T1N	B7CA-AT1N-63080	B7CA-AT1N-64080
90	480	EHD	B7CA-WEHD-42090	B7CA-WEHD-43090	HDL	B7CA-SHDL-42090	B7CA-SHDL-43090	T1N	B7CA-AT1N-43090	B7CA-AT1N-44090
90	600	FDB	B7CA-WFDB-62090	B7CA-WFDB-63090	HDL	B7CA-SHDL-62090	B7CA-SHDL-63090	T1N	B7CA-AT1N-63090	B7CA-AT1N-64090
100	480	EHD	B7CA-WEHD-42100	B7CA-WEHD-43100	HDL	B7CA-SHDL-42100	B7CA-SHDL-43100	T1N	B7CA-AT1N-43100	B7CA-AT1N-44100
100	600	FDB	B7CA-WFDB-62100	B7CA-WFDB-63100	HDL	B7CA-SHDL-62100	B7CA-SHDL-63100	T1N	B7CA-AT1N-63100	B7CA-AT1N-64100
125	600	FDB	B7CB-WFDB-62125	B7CB-WFDB-63125	HDL	B7CB-SHDL-62125	B7CB-SHDL-63125	T3N	B7CB-AT3N-63125	B7CB-AT3N-64125
125	600	JDB	B7CC-WJDB-62125	B7CC-WJDB-63125						
150	600	FDB	B7CB-WFDB-62150	B7CB-WFDB-63150	HDL	B7CB-SHDL-62150	B7CB-SHDL-63150			
150	600	JDB	B7CC-WJDB-62150	B7CC-WJDB-63150	JDL	B7CC-SJDL-62150	B7CC-SJDL-63150	T3N	B7CC-AT3N-63150	B7CC-AT3N-64150
175	600	JDB	B7CC-WJDB-62175	B7CC-WJDB-63175	JDL	B7CC-SJDL-62175	B7CC-SJDL-63175	T3N	B7CC-AT3N-63175	B7CC-AT3N-64175
200	600	JDB	B7CC-WJDB-62200	B7CC-WJDB-63200	JDL	B7CC-SJDL-62200	B7CC-SJDL-63200	T3N	B7CC-AT3N-63200	B7CC-AT3N-64200
225	600	JDB	B7CC-WJDB-62225	B7CC-WJDB-63225	JDL	B7CC-SJDL-62225	B7CC-SJDL-63225	T3N	B7CC-AT3N-63225	B7CC-AT3N-64225
250	600	JDB	B7CC-WJDB-62250	B7CC-WJDB-63250	JDL	B7CC-SJDL-62250	B7CC-SJDL-63250			
250	600	KD	B7CD-WKD-62250	B7CD-WKD-63250	LDL	B7CD-SJDL-62250	B7CD-SJDL-63250	T4N	B7CD-AT4N-63250	B7CD-AT4N-64250
300	600	KD	B7CD-WKD-62300	B7CD-WKD-63300				T5N	B7CD-AT5N-63300	B7CD-AT5N-64300
350	600	KD	B7CD-WKD-62350	B7CD-WKD-63350						
400	600	KD	B7CD-WKD-62400	B7CD-WKD-63400	LDL	B7CD-SLDL-62400	B7CD-SLDL-63400	T5N	B7CD-AT5N-63400	B7CD-AT5N-64400
400	600	LD	B7CE-WLD-62400	B7CE-WLD-63400						
500	600	LD	B7CE-WLD-62500	B7CE-WLD-63500						
600	600	LD	B7CE-WLD-62600	B7CE-WLD-63600	LDL	B7CE-SLDL-62600	B7CE-SLDL-63600			
600	600	ND	B7CF-WND-62600	B7CF-WND-63600				T6N	B7CF-AT6N-63600	B7CF-AT6N-64600
700	600	ND	B7CF-WND-62700	B7CF-WND-63700						
800	600	ND	B7CF-WND-62800	B7CF-WND-63800				T6N	B7CF-AT6N-63800	B7CF-AT6N-64800
1000	600	ND	B7CF-WND-621000	B7CF-WND-631000				T7N	B7CF-AT7N-631000	B7CF-AT7N-641000
1200	600	ND	B7CF-WND-621200	B7CF-WND-631200	PDL	B7CF-SPDL-621200	B7CF-SPDL-631200	T7N	B7CF-AT7N-631200	B7CF-AT7N-641200

NOTE: See page DE6 for dimensional information and circuit breaker interrupting information.
For high interrupting breaker - consult factory.



CIRCUIT BREAKER ENCLOSURES

TECHNICAL DATA INTERRUPTING CAPACITY RATINGS (SYMMETRICAL AMPERES)				
BREAKER FRAME	VOLTS AC			VOLTS DC
	240	480	600	250
CUTLER-HAMMER/ EATON				
EHD	18,000	14,000	—	10,000
FDB	18,000	14,000	14,000	10,000
JDB	65,000	25,000	18,000	10,000
KD	65,000	35,000	25,000	10,000
LD	65,000	35,000	25,000	22,000
ND	65,000	50,000	25,000	—
SQUARE D				
HDL	25,000	18,000	14,000	10,000
JDL	42,000	25,000	22,000	10,000
LDL	25,000	18,000	14,000	10,000
LGL	65,000	35,000	18,000	—
PDL	42,000	50,000	50,000	14,000
ABB				
T1N	50,000	22,000	10,000	25,000
T3N	50,000	25,000	10,000	25,000
T4N	65,000	25,000	18,000	25,000
T5N	65,000	25,000	18,000	25,000
T6N	65,000	35,000	20,000	35,000
T7N	65,000	50,000	25,000	NA

Consult factory for requirements on higher interrupting rated breakers.

NOTE: Modifications to Internal Circuit Breaker such as Shunt Trip, Auxiliary Switches, Alarm Switch and Undervoltage Release Mechanism are available and should be ordered by description.

Dimensions

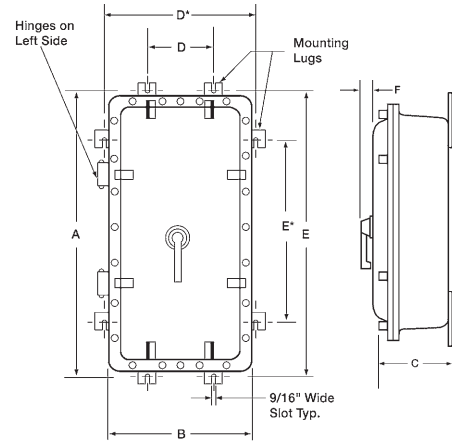


Figure 1

Dimensions

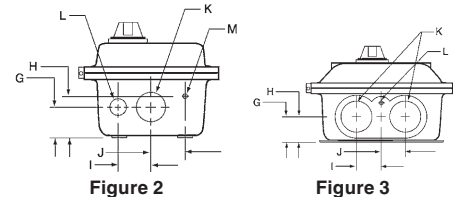
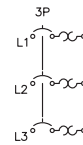


Figure 2

Figure 3

ACCESSORIES / OPTIONS	
CATALOG NUMBER	DESCRIPTION
SU-3B-4X	Drain/Breather NEMA 4X/7 B,C,D
SU-10B-4X	Drain NEMA 4X/7 B,C,D
SU-11B-4X	Breather NEMA 4X/7 B,C,D
B7CGRND	Grounding lug kit
B7C-SN1	Solid neutral 150 AMP
B7C-SN2	Solid neutral 250 AMP
B7C-SN3	Solid neutral 600 AMP
B7C-SN4	Solid neutral 1200 AMP
B7SF	Special epoxy finish
B7SPNPT	Change standard conduit openings

NOTE: Modifications to Internal Circuit Breaker such as Shunt Trip, Auxiliary Switches, Alarm Switch and Undervoltage Release Mechanism are available and should be ordered by description.



B7C DIMENSIONS																		
CATALOG NUMBER	USE FIGURES	DIMENSIONS											CONDUIT OPENINGS TOP & BTM. (NPT)			EST. ENCL. WT. LBS (KG)		
		A	B	C	D	D*	E	E*	F	G	H	I	J	K	L		M	
B7CA	1, 2	18" (457)	11" (279)	9-1/8" (232)	3-5/8" (92)	N/A	16-3/8" (416)	N/A	1-3/4" (44)	2-15/16" (76)	3-11/16" (94)	2-3/8" (60)	2-1/8" (54)	1-1/2"	3/4"	1/2"	46 (20.86)	
B7CB	1, 2	26-1/4" (667)	12-1/2" (318)	10-3/4" (273)	5" (127)	N/A	24-5/8" (625)	N/A	1-3/4" (44)	4-5/16" (110)	5-3/4" (146)	2-3/4" (70)	2-1/2" (64)	2"	1"	1/2"	80 (36.28)	
B7CC	1, 2	34-1/4" (870)	16-1/2" (419)	11-1/2" (292)	9" (229)	N/A	32-5/8" (829)	N/A	1-3/4" (44)	4-11/16" (119)	6-1/4" (159)	4" (102)	3-3/4" (95)	3"	1"	1/2"	155 (70.30)	
B7CD	1, 2	34-1/4" (870)	16-1/2" (419)	11-1/2" (292)	9" (229)	N/A	32-5/8" (829)	N/A	2-5/8" (67)	4-11/16" (119)	6-1/4" (159)	4" (102)	3-3/4" (95)	3"	1"	1/2"	155 (70.30)	
B7CE	1, 3	45-3/8" (1153)	17-1/2" (445)	9-5/8" (244)	N/A	15-1/4" (387)	N/A	33" (838)	2-5/8" (67)	3-3/16" (838)	4-1/2" (114)	2-3/4" (70)	2-3/4" (70)	3"	1/2"	N/A	215 (97.52)	
B7CF	1, 3	62-1/4" (1581)	20-1/4" (514)	15" (381)	N/A	18-1/2" (470)	N/A	43-1/2" (1105)	2-5/8" (67)	5-3/8" (137)	7-3/8" (187)	3-1/2" (89)	3-1/2" (89)	4"	1/2"	N/A	540 (244.93)	