

ENCLOSURES

USF SERIES



USF ENCLOSURES ONLY

TECHNE-TERM



USF Series

cCSAus / ATEX / IEC Ex Certified

Ex tb / AEx tb Zone 21 IIIC
 T80°C/T100°C/T130°C Db
 Enclosure Type 3, 4 & 4X IP66
 Report No. 15.70013872



0539 II 2 G D

Ex e IIC Gb
 Ex tb IIC Db IP66
 Service temperature -50°C to +135°C
 IECEx SIR 14.0053U
 SIRA 14ATEX3156U



FEATURES-SPECIFICATIONS

Applications

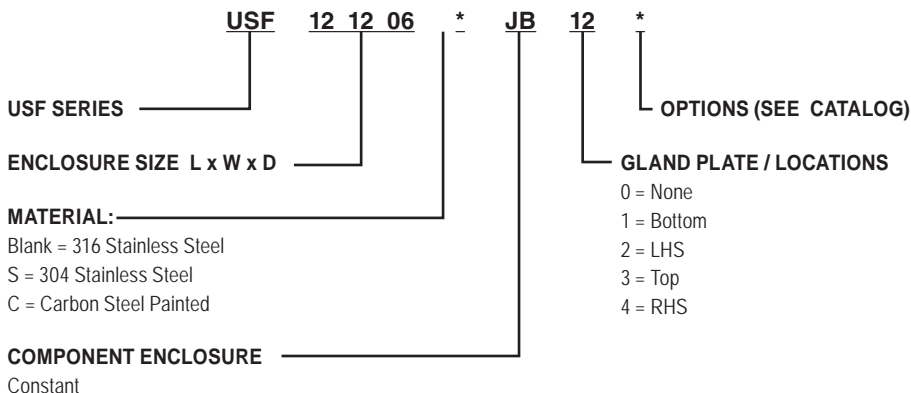
Panel builders and intergraders building equipment for use in hazardous , corrosive, wet, hose down, dust, dirty , for both hot and cold industrial applications

- Pulp & Paper Mills
- Breweries
- Electrical Power Plants
- Refineries
- Petrochemical Plants
- Chemical Plants
- Wastewater Treatment
- Grain Facilities
- Marine, Docks, Ports
- Coal Handling
- Off Shore Platforms
- Pumping Stations
- Textile manufacturing
- Food Processing

USF Enclosures Features—38 Sizes

- External slope top flange directs water, melting ice & snow and dust build up away from the opening side of the door.
- Continuous robot welded seams for a hose down tight seal.
- Concealed hinges with removable hinge pins.
- Doors are interchangeable and easily removable.
- Ground/earthing studs in both cover and through wall of the box.

- Quarter turn 316 stainless steel latch
- One piece high temperature closed cell silicone gasket. With superior recovery and re-sealing properties.
- Sturdy 14 gauge box construction helps prevent bending or permanent deflection of the walls when field installing openings.
- Bi-directional removal mounting lugs for the widest flexibility during installations.
- Openings for glands or conduits factory or field installed—option for gland plates.





USF SLOPE FLANGE ENCLOSURE



CATALOG NUMBER	HEIGHT IN. (MM)	WIDTH	DEPTH	"E"	"F"	"G"	"H"	"A" GLAND PLATE	"B" GLAND PLATE	"C" GLAND PLATE	WEIGHT LBS (KG)
USF121206-JB	12 (305)	12 (305)	6 (153)	10.69 (272)	10.69 (272)	13.63 (346)	13.63 (346)	4.06 (103)	9.38 (238)	9.63 (245)	14 (6.3)
USF161206-JB	16 (407)	12 (305)	6 (153)	10.69 (272)	14.69 (373)	13.63 (346)	17.63 (448)	4.06 (103)	13.38 (340)	9.63 (245)	20 (9.1)
USF161208-JB	16 (407)	12 (305)	8 (203)	10.69 (272)	14.69 (373)	13.63 (346)	17.63 (448)	6.06 (154)	13.38 (340)	9.63 (245)	22 (10)
USF161210-JB	16 (407)	12 (305)	10 (254)	10.69 (272)	14.69 (373)	13.63 (346)	17.63 (448)	8.06 (205)	13.38 (340)	9.63 (245)	24 (10.9)
USF161606-JB	16 (407)	16 (407)	6 (153)	14.69 (373)	14.69 (373)	17.63 (448)	17.63 (448)	4.06 (103)	13.38 (340)	13.38 (340)	26 (11.8)
USF161608-JB	16 (407)	16 (407)	8 (203)	14.69 (373)	14.69 (373)	17.63 (448)	17.63 (448)	6.06 (154)	13.38 (340)	13.38 (340)	27 (12.2)
USF161610-JB	16 (407)	16 (407)	10 (254)	14.69 (373)	14.69 (373)	17.63 (448)	17.63 (448)	8.06 (205)	13.38 (340)	13.38 (340)	29 (13.2)
USF201606-JB	20 (508)	16 (407)	6 (153)	18.69 (475)	14.69 (373)	21.63 (549)	17.63 (448)	4.06 (103)	17.38 (441)	13.38 (340)	29 (13.2)
USF201608-JB	20 (508)	16 (407)	8 (203)	14.69 (373)	18.69 (475)	17.63 (448)	21.63 (549)	6.06 (154)	17.38 (441)	13.38 (340)	31 (14)
USF201610-JB	20 (508)	16 (407)	10 (254)	14.69 (373)	18.69 (475)	17.63 (448)	21.63 (549)	8.06 (205)	17.38 (441)	13.38 (340)	32 (14.5)
USF202006-JB	20 (508)	20 (508)	6 (153)	14.69 (373)	18.69 (475)	17.63 (448)	21.63 (549)	4.06 (103)	17.38 (441)	17.38 (441)	35 (15.9)
USF202008-JB	20 (508)	20 (508)	8 (203)	18.69 (475)	18.69 (475)	21.63 (549)	21.63 (549)	6.06 (154)	17.38 (441)	17.38 (441)	37 (16.8)
USF202010-JB	20 (508)	20 (508)	10 (254)	18.69 (475)	18.69 (475)	21.63 (549)	21.63 (549)	8.06 (205)	17.38 (441)	17.38 (441)	39 (17.7)
USF202012-JB	20 (508)	20 (508)	12 (305)	18.69 (475)	18.69 (475)	21.63 (549)	21.63 (549)	10.06 (255)	17.38 (441)	17.38 (441)	44 (20)
USF241606-JB	24 (610)	16 (407)	6 (153)	14.69 (373)	22.69 (576)	17.63 (448)	25.63 (651)	4.06 (103)	21.38 (543)	13.38 (340)	35 (15.9)
USF241608-JB	24 (610)	16 (407)	8 (203)	18.69 (475)	18.69 (475)	21.63 (549)	21.63 (549)	6.06 (154)	21.38 (543)	13.38 (340)	36 (16.3)
USF241610-JB	24 (610)	16 (407)	10 (254)	14.69 (373)	22.69 (576)	17.63 (448)	25.63 (651)	8.06 (205)	21.38 (543)	13.38 (340)	38 (17.2)
USF242006-JB	24 (610)	20 (508)	6 (153)	14.69 (373)	22.69 (576)	17.63 (448)	25.63 (651)	4.06 (103)	21.38 (543)	17.38 (441)	42 (19)
USF242008-JB	24 (610)	20 (508)	8 (203)	18.69 (475)	22.69 (576)	21.63 (549)	25.63 (651)	6.06 (154)	21.38 (543)	17.38 (441)	43 (19.5)
USF242010-JB	24 (610)	20 (508)	10 (254)	18.69 (475)	22.69 (576)	21.63 (549)	25.63 (651)	8.06 (205)	21.38 (543)	17.38 (441)	44 (20)
USF242012-JB	24 (610)	20 (508)	12 (305)	18.69 (475)	22.69 (576)	21.63 (549)	25.63 (651)	10.06 (255)	21.38 (543)	17.38 (441)	46 (20.9)
USF242406-JB	24 (610)	24 (610)	6 (153)	18.69 (475)	22.69 (576)	21.63 (549)	25.63 (651)	4.06 (103)	21.38 (543)	21.38 (543)	49 (22.2)
USF242408-JB	24 (610)	24 (610)	8 (203)	22.69 (576)	22.69 (576)	25.63 (651)	25.63 (651)	6.06 (154)	21.38 (543)	21.38 (543)	53 (24)
USF242410-JB	24 (610)	24 (610)	10 (254)	22.69 (576)	22.69 (576)	25.63 (651)	25.63 (651)	8.06 (205)	21.38 (543)	21.38 (543)	58 (26.3)
USF242412-JB	24 (610)	24 (610)	12 (305)	22.69 (576)	22.69 (576)	25.63 (651)	25.63 (651)	10.06 (255)	21.38 (543)	21.38 (543)	62 (28.1)
USF242416-JB	24 (610)	24 (610)	16 (407)	22.69 (576)	22.69 (576)	25.63 (651)	25.63 (651)	14.06 (357)	21.38 (543)	21.38 (543)	71 (32.2)
USF242420-JB	24 (610)	24 (610)	20 (508)	22.69 (576)	22.69 (576)	25.63 (651)	25.63 (651)	18.06 (458)	21.38 (543)	21.38 (543)	78 (35.4)
USF302008-JB	30 (762)	20 (508)	8 (203)	22.69 (576)	22.69 (576)	25.63 (651)	25.63 (651)	6.06 (154)	26.00 (660)	17.38 (441)	59 (26.8)
USF302010-JB	30 (762)	20 (508)	10 (254)	18.69 (475)	28.69 (729)	21.63 (549)	31.63 (803)	8.06 (205)	26.00 (660)	17.38 (441)	61 (27.7)
USF302408-JB	30 (762)	24 (610)	8 (203)	18.69 (475)	28.69 (729)	21.63 (549)	31.63 (803)	6.06 (154)	26.00 (660)	21.38 (543)	56 (25.4)
USF302410-JB	30 (762)	24 (610)	10 (254)	22.69 (576)	28.69 (729)	25.63 (651)	31.63 (803)	8.06 (205)	26.00 (660)	21.38 (543)	63 (28.6)
USF302412-JB	30 (762)	24 (610)	12 (305)	22.69 (576)	28.69 (729)	25.63 (651)	31.63 (803)	10.06 (255)	26.00 (660)	21.38 (543)	64 (29)
USF302420-JB	30 (762)	24 (610)	20 (508)	22.69 (576)	28.69 (729)	25.63 (651)	31.63 (803)	18.06 (458)	26.00 (660)	21.38 (543)	99 (45)
USF303008-JB	30 (762)	30 (762)	8 (203)	22.69 (576)	28.69 (729)	25.63 (651)	31.63 (803)	6.06 (154)	26.00 (660)	26.00 (660)	68 (30.8)
USF303010-JB	30 (762)	30 (762)	10 (254)	28.69 (729)	28.69 (729)	31.63 (803)	31.63 (803)	8.06 (205)	26.00 (660)	26.00 (660)	72 (32.7)
USF303012-JB	30 (762)	30 (762)	12 (305)	28.69 (729)	28.69 (729)	31.63 (803)	31.63 (803)	10.06 (255)	26.00 (660)	26.00 (660)	89 (40.4)
USF362408-JB	36 (915)	24 (610)	8 (203)	34.69 (881)	28.69 (729)	37.63 (956)	31.63 (803)	6.06 (154)	33.00 (838)	21.38 (543)	66 (30)
USF362410-JB	36 (915)	24 (610)	10 (254)	9.79 (249)	35.20 (894)	8.15 (207)	27.63 (702)	8.06 (205)	33.00 (838)	21.38 (543)	70 (31.8)

All dimension in. (mm)

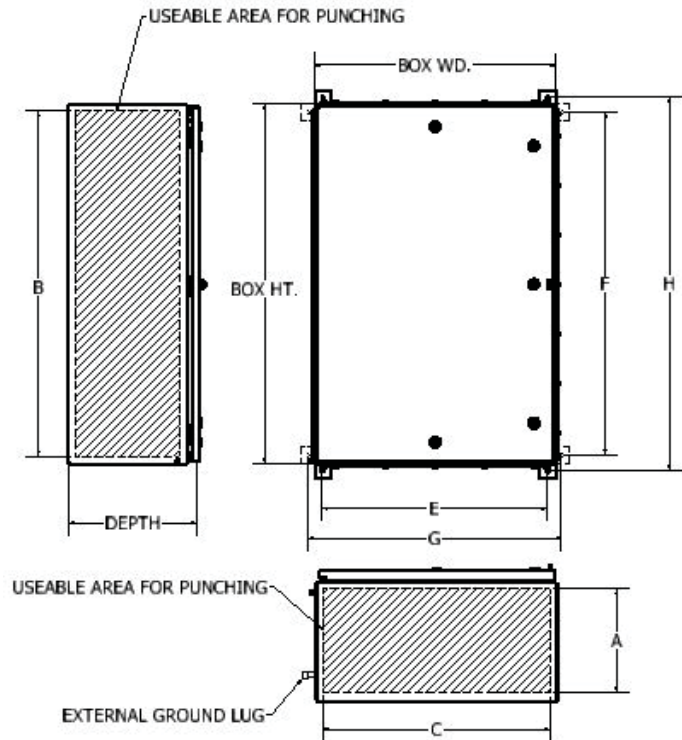


USF SLOPE FLANGE ENCLOSURE



CATALOG NUMBER	"A" BLANK WALL AREA	"B" BLANK WALL AREA	"C" BLANK WALL AREA	(W) MAX. POWER
USF121206-JB	5.74 (146)	10.93 (277)	10.93 (277)	15.0
USF161206-JB	5.74 (146)	14.93 (379)	10.93 (277)	17.0
USF161208-JB	7.74 (196)	14.93 (379)	10.93 (277)	20.6
USF161210-JB	9.74 (247)	14.93 (379)	10.93 (277)	23.5
USF161606-JB	5.74 (146)	14.93 (379)	14.93 (379)	19.0
USF161608-JB	7.74 (196)	14.93 (379)	14.93 (379)	20.0
USF161610-JB	9.74 (247)	14.93 (379)	14.93 (379)	25.0
USF201606-JB	5.74 (146)	18.93 (480)	14.93 (379)	21.0
USF201608-JB	7.74 (196)	18.93 (480)	14.93 (379)	23.0
USF201610-JB	9.74 (247)	18.93 (480)	14.93 (379)	26.0
USF202006-JB	5.74 (146)	18.93 (480)	18.93 (480)	24.3
USF202008-JB	7.74 (196)	18.93 (480)	18.93 (480)	26.0
USF202010-JB	9.74 (247)	18.93 (480)	18.93 (480)	30.0
USF202012-JB	11.74 (298)	18.93 (480)	18.93 (480)	36.0
USF241606-JB	5.74 (146)	22.93 (582)	14.93 (379)	35.0
USF241608-JB	7.74 (196)	22.93 (582)	14.93 (379)	36.0
USF241610-JB	9.74 (247)	22.93 (582)	14.93 (379)	31.0
USF242006-JB	5.74 (146)	22.93 (582)	18.93 (480)	24.5
USF242008-JB	7.74 (196)	22.93 (582)	18.93 (480)	31.5
USF242010-JB	9.74 (247)	22.93 (582)	18.93 (480)	33.6
USF242012-JB	11.74 (298)	22.93 (582)	18.93 (480)	36.0
USF242406-JB	5.74 (146)	22.93 (582)	22.93 (582)	25.8
USF242408-JB	7.74 (196)	22.93 (582)	22.93 (582)	34.0
USF242410-JB	9.74 (247)	22.93 (582)	22.93 (582)	34.0
USF242412-JB	11.74 (298)	22.93 (582)	22.93 (582)	38.0
USF242416-JB	15.74 (400)	22.93 (582)	22.93 (582)	42.0
USF242420-JB	19.74 (501)	22.93 (582)	22.93 (582)	57.3
USF302008-JB	7.74 (196)	28.93 (735)	18.93 (480)	36.5
USF302010-JB	9.74 (247)	28.93 (735)	18.93 (480)	36.0
USF302408-JB	7.74 (196)	28.93 (735)	22.93 (582)	39.0
USF302410-JB	9.74 (247)	28.93 (735)	22.93 (582)	38.0
USF302412-JB	11.74 (298)	28.93 (735)	22.93 (582)	40.0
USF302420-JB	19.74 (501)	28.93 (735)	22.93 (582)	57.3
USF303008-JB	7.74 (196)	28.93 (735)	28.93 (735)	43.0
USF303010-JB	9.74 (247)	28.93 (735)	28.93 (735)	40.0
USF303012-JB	11.74 (298)	28.93 (735)	28.93 (735)	46.0
USF362408-JB	7.74 (196)	34.93 (887)	22.93 (582)	44.0
USF362410-JB	9.74 (247)	34.93 (887)	22.93 (582)	40.0

All dimension in. (mm)



USF MAXIMUM CONDUIT / GLAND OPENINGS					
W/O GLAND PLATE			W/ GLAND PLATE		
BOX DEPTH	MAX NPT	MAX METRIC	BOX DEPTH	MAX NPT	MAX METRIC
6	3-1/2"	M100	6	2-1/2"	M75
8	4"	M100	8	4"	M100
10	4"	M100	10	4"	M100
12	4"	M100	12	4"	M100
16	4"	M100	16	4"	M100
20	4"	M100	20	4"	M100

See enclosure modification page for conduit / gland holes sizes and spacing.



USF SLOPE FLANGE ENCLOSURES

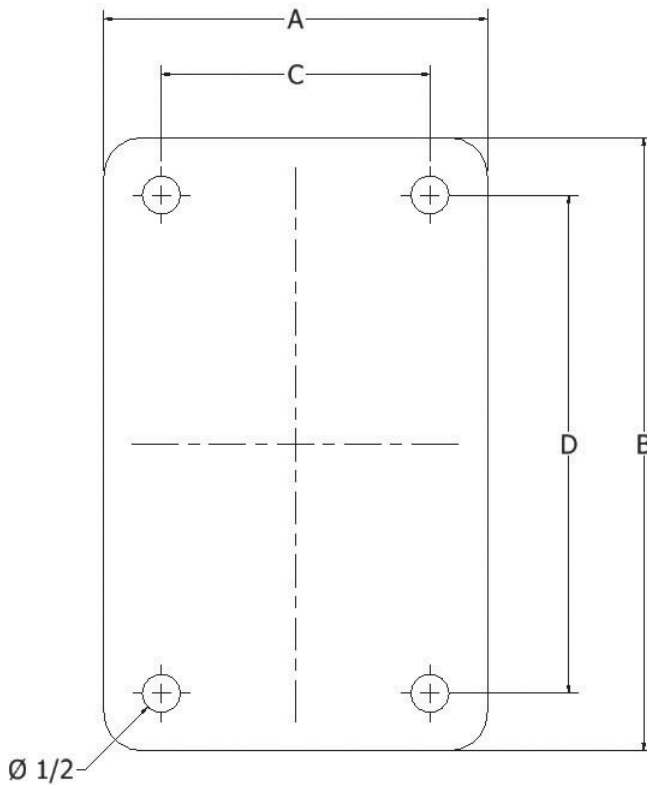


USF SERIES INTERNAL MOUNTING PAN					
CATALOG NO.	A	B	C	D	THICKNESS
USF1212P	9.00 (229)	9.00 (229)	7.25 (184)	7.25 (184)	.13 (3.3)
USF1612P	9.00 (229)	13.00 (330)	7.25 (184)	11.25 (286)	.13 (3.3)
USF1616P	13.00 (330)	13.00 (330)	11.25 (286)	11.25 (286)	.13 (3.3)
USF2012P	9.00 (229)	17.00 (432)	7.25 (184)	15.25 (387)	.13 (3.3)
USF2016P	13.00 (330)	17.00 (432)	11.25 (286)	15.25 (387)	.13 (3.3)
USF2416P	13.00 (330)	21.00 (533)	11.25 (286)	19.25 (489)	.13 (3.3)
USF2420P	17.00 (432)	21.00 (533)	15.25 (387)	19.25 (489)	.13 (3.3)
USF2424P	21.00 (533)	21.00 (533)	19.25 (489)	19.25 (489)	.13 (3.3)
USF3020P	17.00 (432)	25.63 (651)	15.25 (387)	23.88 (606)	.13 (3.3)
USF3024P	21.00 (533)	25.63 (651)	19.25 (489)	23.88 (606)	.13 (3.3)
USF3030P	25.63 (651)	25.63 (651)	23.88 (606)	23.88 (606)	.13 (3.3)
USF3624P	21.00 (533)	32.63 (829)	19.25 (489)	30.88 (784)	.19 (4.8)

Internal mounting pans are made from high strength aluminum alloy. The aluminum alloy is corrosion resistance and can be drilled and tapped in the field for ease of installation of components.

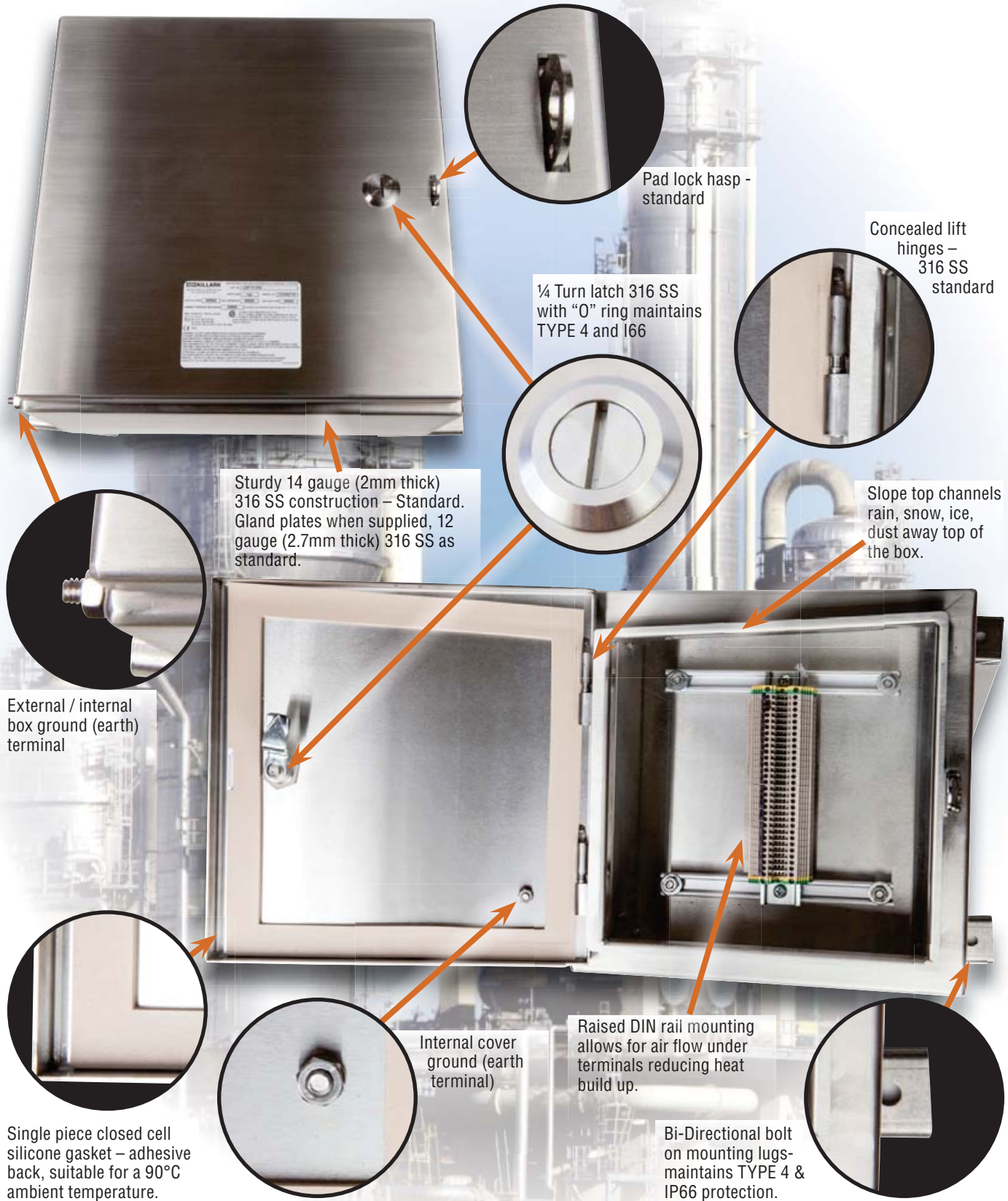
Pans come standard with mounting hardware.

All dimension in. (mm)





TERMINAL BOXES FOR HARSH & HAZARDOUS ENVIRONMENTS



Pad lock hasp - standard

Concealed lift hinges - 316 SS standard

¼ Turn latch 316 SS with "O" ring maintains TYPE 4 and I66

Sturdy 14 gauge (2mm thick) 316 SS construction - Standard. Gland plates when supplied, 12 gauge (2.7mm thick) 316 SS as standard.

Slope top channels rain, snow, ice, dust away top of the box.

External / internal box ground (earth) terminal

Internal cover ground (earth) terminal

Raised DIN rail mounting allows for air flow under terminals reducing heat build up.

Single piece closed cell silicone gasket - adhesive back, suitable for a 90°C ambient temperature.

Bi-Directional bolt on mounting lugs - maintains TYPE 4 & IP66 protection.



USF TERMINAL BOXES

TECHNE-TERM

FEATURES-SPECIFICATIONS

Applications

Terminal enclosures for use in hazardous, corrosive, wet, hose down, dust, dirty, for both hot and cold industrial applications for terminating conductors by means of a terminal block.

- Pulp & Paper Mills
- Grain Facilities
- Breweries
- Marine, Docks, Ports
- Electrical Power Plants
- Coal Handling
- Refineries
- Off Shore Platforms
- Petrochemical Plants
- Pumping Stations
- Chemical Plants
- Textile manufacturing
- Wastewater Treatment
- Food Processing
- Used to link electrical wires. Provide access to conductors for maintenance and system expansions
- Primary circuits for distribution to field control devices.



USF Series

cCSAus / ATEX / IEC Ex Certified

IECEX SIR 14.0054

SIRA 14ATEX3157

CE 0539 II 2 G D

Ex e IIC Gb, Ex i IIC Gb

Ex tb IIC Db IP66

TA= -50°C to +45°C /T6/T80°C

TA= -50°C to +55°C /T5/T100°C

TA= -50°C to +90°C /T4/T130°C

Class I, Div. 2, Groups A, B, C & D

Ex e/ Class I, Zones 1 & 2, AEx e

Groups IIA, IIB & IIC

Class II, Groups E, F & G. Class III

Type 3, 4 & 4X

Ex tb / Zone 21 & 22 AEx tb IIC

T80°C/ T100°C/T130°C Db

IP66

CSA 15.70013872

IEEx 15.0155X INMETRO

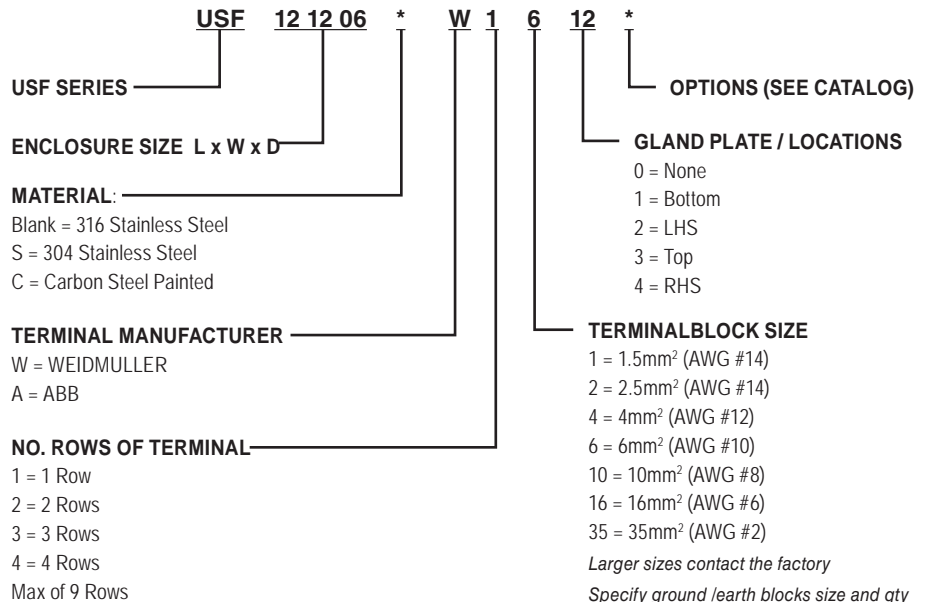


Material

- 316 stainless steel as standard.
- Option material 304 Stainless steel, carbon steel or aluminum.
- All external hardware 316 stainless steel.
- Gasket One piece high temperature closed cell silicone.

USF Terminal Box Features – 38 Sizes

- Offered with ABB or Weidmuller increase safety terminal blocks in choices of screw terminal or cage (spring) clamp styles DIN rail mounted. Intrinsically safe terminals available also.
- External slope top flange directs water, melting ice & snow and dust build up away from the opening side of the door.
- Continuous robot welded seams for a hose down tight seal.
- Concealed hinges with removable hinge pins. Standard on left side.
- Doors are interchangeable and easily removable.
- Ground/earthing studs in both cover and through wall of the box.
- Quarter turn 316 stainless steel latch
- One piece high temperature closed cell silicone gasket. With superior recovery and re-sealing properties.
- Sturdy 14 gauge box construction helps prevent bending or permanent deflection of the walls when field installing openings.
- Bi-directional removal mounting lugs for the widest flexibility during installations.
- Openings for glands or conduit factory or field installed – option for gland plates.





USF TERMINAL BOXES



CATALOG NUMBER	HEIGHT IN. (MM)	WIDTH	DEPTH	"E"	"F"	"G"	"H"	"A" GLAND PLATE	"B" GLAND PLATE	"C" GLAND PLATE	WEIGHT LBS (KG)
USF121206	12 (305)	12 (305)	6 (153)	10.69 (272)	10.69 (272)	13.63 (346)	13.63 (346)	4.06 (103)	9.63 (245)	9.63 (245)	14 (6.3)
USF161206	16 (407)	12 (305)	6 (153)	10.69 (272)	14.69 (373)	13.63 (346)	17.63 (448)	4.06 (103)	13.38 (340)	9.63 (245)	20 (9.1)
USF161208	16 (407)	12 (305)	8 (203)	10.69 (272)	14.69 (373)	13.63 (346)	17.63 (448)	6.06 (154)	13.38 (340)	9.63 (245)	22 (10)
USF161210	16 (407)	12 (305)	10 (254)	10.69 (272)	14.69 (373)	13.63 (346)	17.63 (448)	8.06 (205)	13.38 (340)	9.63 (245)	24 (10.9)
USF161606	16 (407)	16 (407)	6 (153)	14.69 (373)	14.69 (373)	17.63 (448)	17.63 (448)	4.06 (103)	13.38 (340)	13.38 (340)	26 (11.8)
USF161608	16 (407)	16 (407)	8 (203)	14.69 (373)	14.69 (373)	17.63 (448)	17.63 (448)	6.06 (154)	13.38 (340)	13.38 (340)	27 (12.2)
USF161610	16 (407)	16 (407)	10 (254)	14.69 (373)	14.69 (373)	17.63 (448)	17.63 (448)	8.06 (205)	13.38 (340)	13.38 (340)	29 (13.2)
USF201606	20 (508)	16 (407)	6 (153)	18.69 (475)	14.69 (373)	21.63 (549)	17.63 (448)	4.06 (103)	17.38 (441)	13.38 (340)	29 (13.2)
USF201608	20 (508)	16 (407)	8 (203)	14.69 (373)	18.69 (475)	17.63 (448)	21.63 (549)	6.06 (154)	17.38 (441)	13.38 (340)	31 (14)
USF201610	20 (508)	16 (407)	10 (254)	14.69 (373)	18.69 (475)	17.63 (448)	21.63 (549)	8.06 (205)	17.38 (441)	13.38 (340)	32 (14.5)
USF202006	20 (508)	20 (508)	6 (153)	14.69 (373)	18.69 (475)	17.63 (448)	21.63 (549)	4.06 (103)	17.38 (441)	17.38 (441)	35 (15.9)
USF202008	20 (508)	20 (508)	8 (203)	18.69 (475)	18.69 (475)	21.63 (549)	21.63 (549)	6.06 (154)	17.38 (441)	17.38 (441)	37 (16.8)
USF202010	20 (508)	20 (508)	10 (254)	18.69 (475)	18.69 (475)	21.63 (549)	21.63 (549)	8.06 (205)	17.38 (441)	17.38 (441)	39 (17.7)
USF202012	20 (508)	20 (508)	12 (305)	18.69 (475)	18.69 (475)	21.63 (549)	21.63 (549)	10.06 (255)	17.38 (441)	17.38 (441)	44 (20)
USF241606	24 (610)	16 (407)	6 (153)	14.69 (373)	22.69 (576)	17.63 (448)	25.63 (651)	4.06 (103)	21.38 (543)	13.38 (340)	35 (15.9)
USF241608	24 (610)	16 (407)	8 (203)	18.69 (475)	18.69 (475)	21.63 (549)	21.63 (549)	6.06 (154)	21.38 (543)	13.38 (340)	36 (16.3)
USF241610	24 (610)	16 (407)	10 (254)	14.69 (373)	22.69 (576)	17.63 (448)	25.63 (651)	8.06 (205)	21.38 (543)	13.38 (340)	38 (17.2)
USF242006	24 (610)	20 (508)	6 (153)	14.69 (373)	22.69 (576)	17.63 (448)	25.63 (651)	4.06 (103)	21.38 (543)	17.38 (441)	42 (19)
USF242008	24 (610)	20 (508)	8 (203)	18.69 (475)	22.69 (576)	21.63 (549)	25.63 (651)	6.06 (154)	21.38 (543)	17.38 (441)	43 (19.5)
USF242010	24 (610)	20 (508)	10 (254)	18.69 (475)	22.69 (576)	21.63 (549)	25.63 (651)	8.06 (205)	21.38 (543)	17.38 (441)	44 (20)
USF242012	24 (610)	20 (508)	12 (305)	18.69 (475)	22.69 (576)	21.63 (549)	25.63 (651)	10.06 (255)	21.38 (543)	17.38 (441)	46 (20.9)
USF242406	24 (610)	24 (610)	6 (153)	18.69 (475)	22.69 (576)	21.63 (549)	25.63 (651)	4.06 (103)	21.38 (543)	21.38 (543)	49 (22.2)
USF242408	24 (610)	24 (610)	8 (203)	22.69 (576)	22.69 (576)	25.63 (651)	25.63 (651)	6.06 (154)	21.38 (543)	21.38 (543)	53 (24)
USF242410	24 (610)	24 (610)	10 (254)	22.69 (576)	22.69 (576)	25.63 (651)	25.63 (651)	8.06 (205)	21.38 (543)	21.38 (543)	58 (26.3)
USF242412	24 (610)	24 (610)	12 (305)	22.69 (576)	22.69 (576)	25.63 (651)	25.63 (651)	10.06 (255)	21.38 (543)	21.38 (543)	62 (28.1)
USF242416	24 (610)	24 (610)	16 (407)	22.69 (576)	22.69 (576)	25.63 (651)	25.63 (651)	14.06 (357)	21.38 (543)	21.38 (543)	71 (32.2)
USF242420	24 (610)	24 (610)	20 (508)	22.69 (576)	22.69 (576)	25.63 (651)	25.63 (651)	18.06 (458)	21.38 (543)	21.38 (543)	78 (35.4)
USF302008	30 (762)	20 (508)	8 (203)	22.69 (576)	22.69 (576)	25.63 (651)	25.63 (651)	6.06 (154)	26.00 (660)	17.38 (441)	59 (26.8)
USF302010	30 (762)	20 (508)	10 (254)	18.69 (475)	28.69 (729)	21.63 (549)	31.63 (803)	8.06 (205)	26.00 (660)	17.38 (441)	61 (27.7)
USF302408	30 (762)	24 (610)	8 (203)	18.69 (475)	28.69 (729)	21.63 (549)	31.63 (803)	6.06 (154)	26.00 (660)	21.38 (543)	56 (25.4)
USF302410	30 (762)	24 (610)	10 (254)	22.69 (576)	28.69 (729)	25.63 (651)	31.63 (803)	8.06 (205)	26.00 (660)	21.38 (543)	63 (28.6)
USF302412	30 (762)	24 (610)	12 (305)	22.69 (576)	28.69 (729)	25.63 (651)	31.63 (803)	10.06 (255)	26.00 (660)	21.38 (543)	64 (29)
USF302420	30 (762)	24 (610)	20 (508)	22.69 (576)	28.69 (729)	25.63 (651)	31.63 (803)	18.06 (458)	26.00 (660)	21.38 (543)	99 (45)
USF303008	30 (762)	30 (762)	8 (203)	22.69 (576)	28.69 (729)	25.63 (651)	31.63 (803)	6.06 (154)	26.00 (660)	26.00 (660)	68 (30.8)
USF303010	30 (762)	30 (762)	10 (254)	28.69 (729)	28.69 (729)	31.63 (803)	31.63 (803)	8.06 (205)	26.00 (660)	26.00 (660)	72 (32.7)
USF303012	30 (762)	30 (762)	12 (305)	28.69 (729)	28.69 (729)	31.63 (803)	31.63 (803)	10.06 (255)	26.00 (660)	26.00 (660)	89 (40.4)
USF362408	36 (915)	24 (610)	8 (203)	34.69 (881)	28.69 (729)	37.63 (956)	31.63 (803)	6.06 (154)	33.00 (838)	21.38 (543)	66 (30)
USF362410	36 (915)	24 (610)	10 (254)	9.79 (249)	35.20 (894)	8.15 (207)	27.63 (702)	8.06 (205)	33.00 (838)	21.38 (543)	70 (31.8)

All dimension in. (mm)



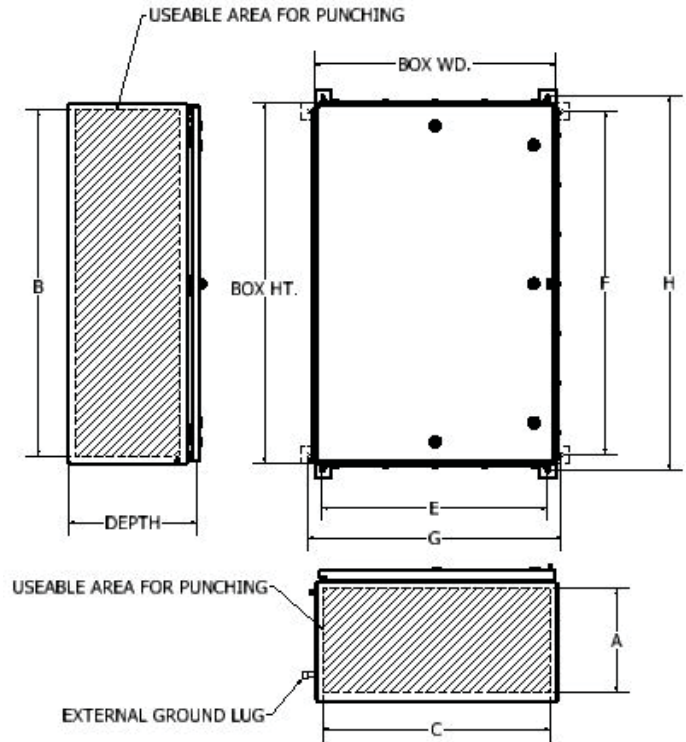
USF TERMINAL BOXES



CATALOG NUMBER	"A" BLANK WALL AREA	"B" BLANK WALL AREA	"C" BLANK WALL AREA	(W) MAX. POWER
USF121206	5.74 (146)	10.93 (277)	10.93 (277)	15.0
USF161206	5.74 (146)	14.93 (379)	10.93 (277)	17.0
USF161208	7.74 (196)	14.93 (379)	10.93 (277)	20.6
USF161210	9.74 (247)	14.93 (379)	10.93 (277)	23.5
USF161606	5.74 (146)	14.93 (379)	14.93 (379)	19.0
USF161608	7.74 (196)	14.93 (379)	14.93 (379)	20.0
USF161610	9.74 (247)	14.93 (379)	14.93 (379)	25.0
USF201606	5.74 (146)	18.93 (480)	14.93 (379)	21.0
USF201608	7.74 (196)	18.93 (480)	14.93 (379)	23.0
USF201610	9.74 (247)	18.93 (480)	14.93 (379)	26.0
USF202006	5.74 (146)	18.93 (480)	18.93 (480)	24.3
USF202008	7.74 (196)	18.93 (480)	18.93 (480)	26.0
USF202010	9.74 (247)	18.93 (480)	18.93 (480)	30.0
USF202012	11.74 (298)	18.93 (480)	18.93 (480)	36.0
USF241606	5.74 (146)	22.93 (582)	14.93 (379)	35.0
USF241608	7.74 (196)	22.93 (582)	14.93 (379)	36.0
USF241610	9.74 (247)	22.93 (582)	14.93 (379)	31.0
USF242006	5.74 (146)	22.93 (582)	18.93 (480)	24.5
USF242008	7.74 (196)	22.93 (582)	18.93 (480)	31.5
USF242010	9.74 (247)	22.93 (582)	18.93 (480)	33.6
USF242012	11.74 (298)	22.93 (582)	18.93 (480)	36.0
USF242406	5.74 (146)	22.93 (582)	22.93 (582)	25.8
USF242408	7.74 (196)	22.93 (582)	22.93 (582)	34.0
USF242410	9.74 (247)	22.93 (582)	22.93 (582)	34.0
USF242412	11.74 (298)	22.93 (582)	22.93 (582)	38.0
USF242416	15.74 (400)	22.93 (582)	22.93 (582)	42.0
USF242420	19.74 (501)	22.93 (582)	22.93 (582)	57.3
USF302008	7.74 (196)	28.93 (735)	18.93 (480)	36.5
USF302010	9.74 (247)	28.93 (735)	18.93 (480)	36.0
USF302408	7.74 (196)	28.93 (735)	22.93 (582)	39.0
USF302410	9.74 (247)	28.93 (735)	22.93 (582)	38.0
USF302412	11.74 (298)	28.93 (735)	22.93 (582)	40.0
USF302420	19.74 (501)	28.93 (735)	22.93 (582)	57.3
USF303008	7.74 (196)	28.93 (735)	28.93 (735)	43.0
USF303010	9.74 (247)	28.93 (735)	28.93 (735)	40.0
USF303012	11.74 (298)	28.93 (735)	28.93 (735)	46.0
USF362408	7.74 (196)	34.93 (887)	22.93 (582)	44.0
USF362410	9.74 (247)	34.93 (887)	22.93 (582)	40.0

All dimension in. (mm)

USF MAXIMUM CONDUIT / GLAND OPENINGS					
W/O GLAND PLATE			W/ GLAND PLATE		
BOX DEPTH	MAX NPT	MAX METRIC	BOX DEPTH	MAX NPT	MAX METRIC
6	3-1/2"	M100	6	2-1/2"	M75
8	4"	M100	8	4"	M100
10	4"	M100	10	4"	M100
12	4"	M100	12	4"	M100
16	4"	M100	16	4"	M100
20	4"	M100	20	4"	M100



Standard terminal offering

- ABB ZS Screw Clamp
- ABB ZS Cage (Spring) Clamp
- Weidmuller WD Screw Clamp
- Weidmuller ZD Cage (Spring) Clamp

Additional ABB & Weidmuller terminal blocks available. Contact the factory for more information.

Terminals are mounted on TS-35 DIN rail. The rails are mounted to raised collared studs or unistrut rails which adds additional air flow and wire room.

Pages E18 & E19 for maximum number of terminals and rows per enclosure.

Specify ground / earth blocks size and qty separately. Must be included in total qty.

The USF terminal boxes are suitable for use Wago, Phoenix and Klemsan Elektrik terminals.

Options

- Panel ID tag 316 stainless steel
- Tamperproof latches
- Key latches
- Copper ground / earth bars

See enclosure modification page for conduit / gland holes sizes and spacing.



ABB TERMINALS

ABB ZS Series Screw Terminal

ABB ZS Series Screw Terminal

ABB ZK Series Screw Clamp Terminals

ZS 4		32 AMPS 4MM2 690VAC (12 AWG 600VAC)							
	ROW	1	2	3	4	5	6	7	8
		ROWS	ROWS	ROWS	ROWS	ROWS	ROWS	ROWS	ROWS
USF1212**	33	66	99						
USF1612**	52	104	156						
USF1616**	52	104	156	208					
USF2016**	72	144	216	288					
USF2020**	72	144	216	288	360				
USF2416**	91	182	273	364					
USF2420**	91	182	273	364	455				
USF2424**	91	182	273	364	455	546			
USF3020**	114	228	342	456	570				
USF3024**	114	228	342	456	570	684			
USF3030**	114	228	342	456	570	684	798	912	
USF3624**	148	296	444	592	740	888			
ZS 6		41 AMPS 6MM2 690VAC (10 AWG 600VAC)							
	ROW	1	2	3	4	5	6	7	8
		ROWS	ROWS	ROWS	ROWS	ROWS	ROWS	ROWS	ROWS
USF1212**	29	58	87						
USF1612**	45	90	135						
USF1616**	45	90	135	180					
USF2016**	62	124	186	248					
USF2020**	62	124	186	248	310				
USF2416**	79	158	237	316					
USF2420**	79	158	237	316	395				
USF2424**	79	158	237	316	395	474			
USF3020**	98	196	294	392	490				
USF3024**	98	196	294	392	490	588			
USF3030**	98	196	294	392	490	588	686	784	
USF3624**	128	256	384	512	640	768			
ZS 10		57 AMPS 10MM2 690VAC (6 AWG 600VAC)							
	ROW	1	2	3	4	5	6	7	8
		ROWS	ROWS	ROWS	ROWS	ROWS	ROWS	ROWS	ROWS
USF1212**	21	42							
USF1612**	34	68							
USF1616**	34	68	102						
USF2016**	47	94	141						
USF2020**	47	94	141	188					
USF2416**	59	118	177						
USF2420**	59	118	177	236					
USF2424**	59	118	177	236	295				
USF3020**	74	148	222	296					
USF3024**	74	148	222	296	370				
USF3030**	74	148	222	296	370	444			
USF3624**	96	192	288	384	480				
ZS 16		76 AMPS 16MM2 690VAC (4 AWG 600VAC)							
	ROW	1	2	3	4	5	6	7	8
		ROWS	ROWS	ROWS	ROWS	ROWS	ROWS	ROWS	ROWS
USF1212**	17	34							
USF1612**	27	54							
USF1616**	27	54							
USF2016**	37	74							
USF2020**	37	74	111						
USF2416**	47	94							
USF2420**	47	94	141						
USF2424**	47	94	141	188					
USF3020**	59	118	177						
USF3024**	59	118	177	236					
USF3030**	59	118	177	236	295				
USF3624**	77	154	231	308					
ZS 35		125 AMPS 35MM2 690VAC (1/0 AWG 600VAC)							
	ROW	1	2	3	4	5	6	7	8
		ROWS	ROWS	ROWS	ROWS	ROWS	ROWS	ROWS	ROWS
USF1212**	10								
USF1612**	17								
USF1616**	17								
USF2016**	23								
USF2020**	23	46							
USF2416**	29								
USF2420**	29	58							
USF2424**	29	58							
USF3020**	37	74							
USF3024**	37	74							
USF3030**	37	74	111						
USF3624**	48	96							
ZS 4-D1		29 AMPS 4MM2 440VAC (12 AWG)							
	ROW	1	2	3	4	5	6	7	8
		ROWS	ROWS	ROWS	ROWS	ROWS	ROWS	ROWS	ROWS
USF1212**	33	66							
USF1612**	52	104							
USF1616**	52	104	156						
USF2016**	72	144	216						
USF2020**	72	144	216	288					
USF2416**	91	182	273						
USF2420**	91	182	273	364					
USF2424**	91	182	273	364	455				
USF3020**	114	228	342	456					
USF3024**	114	228	342	456	570				
USF3030**	114	228	342	456	570	684			
USF3624**	148	296	444	592	740				

ZS 6-D1		40 AMPS 6MM2 440VAC (10 AWG)							
	ROW	1	2	3	4	5	6	7	8
		ROWS	ROWS	ROWS	ROWS	ROWS	ROWS	ROWS	ROWS
USF1212**	28	56							
USF1612**	45	90							
USF1616**	45	90	135						
USF2016**	62	124	186						
USF2020**	62	124	186	248					
USF2416**	79	158	237						
USF2420**	79	158	237	316					
USF2424**	79	158	237	316	395				
USF3020**	98	196	294	392					
USF3024**	98	196	294	392	490				
USF3030**	98	196	294	392	490	588			
USF3624**	128	256	384	512	640				
ZS 4-D2		29 AMPS 4MM2 440VAC (12 AWG)							
	ROW	1	2	3	4	5	6	7	8
		ROWS	ROWS	ROWS	ROWS	ROWS	ROWS	ROWS	ROWS
USF1212**	33	66							
USF1612**	52	104							
USF1616**	52	104	156						
USF2016**	72	144	216						
USF2020**	72	144	216	288					
USF2416**	91	182	273						
USF2420**	91	182	273	364					
USF2424**	91	182	273	364	455				
USF3020**	114	228	342	456					
USF3024**	114	228	342	456	570				
USF3030**	114	228	342	456	570	684			
USF3624**	148	296	444	592	740				
ZS 6-D2		40 AMPS 6MM2 440VAC (10 AWG)							
	ROW	1	2	3	4	5	6	7	8
		ROWS	ROWS	ROWS	ROWS	ROWS	ROWS	ROWS	ROWS
USF1212**	28	56							
USF1612**	45	90							
USF1616**	45	90	135						
USF2016**	62	124	186						
USF2020**	62	124	186	248					
USF2416**	79	158	237						
USF2420**	79	158	237	316					
USF2424**	79	158	237	316	395				
USF3020**	98	196	294	392					
USF3024**	98	196	294	392	490				
USF3030**	98	260	294	392	490	588			
USF3624**	128	256	384	512	640				
ABB ZK SERIES CAGE CLAMP TERMINALS									
ZK 2.5		21 AMPS 2.5MM2 690VAC (14 AWG 600VAC)							
	ROW	1	2	3	4	5	6	7	8
		ROWS	ROWS	ROWS	ROWS	ROWS	ROWS	ROWS	ROWS
USF1212**	35	70	105						
USF1612**	54	108	162						
USF1616**	54	108	162	216					
USF2016**	74	148	222	296					
USF2020**	74	148	222	296	370				
USF2416**	93	186	279	372					
USF2420**	93	186	279	372	465				
USF2424**	93	186	279	372	465	558			
USF3020**	116	232	348	464	580				
USF3024**	116	232	348	464	580	696			
USF3030**	116	260	348	464	580	696	812	928	
USF3624**	150	300	450	600	750	900			
ZK 4		29 AMPS 4MM2 690VAC (12 AWG 600VAC)							
	ROW	1	2	3	4	5	6	7	8
		ROWS	ROWS	ROWS	ROWS	ROWS	ROWS	ROWS	ROWS
USF1212**	31	62	93						
USF1612**	47	94	141						
USF1616**	47	94	141	188					
USF2016**	64	128	192	256					
USF2020**	64	128	192	256	320				
USF2416**	81	162	243	324					
USF2420**	81	162	243	324	405				
USF2424**	81	162	243	324	405	486			
USF3020**	101	202	303	404	505				
USF3024**	101	202	303	404	505	606			
USF3030**	101	260	303	404	505	606	707	808	
USF3624**	130	260	390	520	650	780			
ZK 6		37 AMPS 6MM2 690VAC (10 AWG 600VAC)							
	ROW	1	2	3	4	5	6	7	8
		ROWS	ROWS	ROWS	ROWS	ROWS	ROWS	ROWS	ROWS
USF1212**	23	46							
USF1612**	35	70							
USF1616**	35	70	105						
USF2016**	48	96	144						
USF2020**	48	96	144	192					
USF2416**	61	122	183						
USF2420**	61	122	183	244					
USF2424**	61	122	183	244	305				
USF3020**	75	150	225	300					



WEIDMULLER TERMINALS

Wiedmuller WDU Series Screw Terminal

Weidmuller ZDU Series Cage Clamp Terminals

Weidmuller WDUN Series Screw Clamp Terminals

WDU 2.5	15 AMPS 2.5MM ² 550VAC (14 AWG)						
	1 ROW	2 ROWS	3 ROWS	4 ROWS	5 ROWS	6 ROWS	7 ROWS
USF1212**	35	70					
USF1612**	55	110					
USF1616**	55	110	165				
USF2016**	75	150	225				
USF2020**	75	150	225	300	375		
USF2416**	95	190	285				
USF2420**	95	190	285	380	475		
USF2424**	95	190	285	380	475	570	
USF3020**	118	236	354	472	590		
USF3024**	118	236	354	472	590	708	
USF3030**	118	260	354	472	590	708	826
USF3624**	153	306	459	612	765	918	
WDU 4	28 AMPS 4MM ² 690VAC (12 AWG 600VAC)						
USF1212**	29	58					
USF1612**	46	92					
USF1616**	46	92	138				
USF2016**	62	124	186				
USF2020**	62	124	186	248	310		
USF2416**	79	158	237				
USF2420**	79	158	237	316	395		
USF2424**	79	158	237	316	395	474	
USF3020**	98	196	294	392	490		
USF3024**	98	196	294	392	490	588	
USF3030**	98	260	294	392	490	588	686
USF3624**	127	254	381	508	635	762	
WDU 6	36 AMPS 6MM ² 550VAC (10 AWG)						
USF1212**	23	46					
USF1612**	35	70					
USF1616**	35	70	105				
USF2016**	48	96	144				
USF2020**	48	96	144	192	240		
USF2416**	61	122	183				
USF2420**	61	122	183	244	305		
USF2424**	61	122	183	244	305	366	
USF3020**	76	152	228	304	380		
USF3024**	76	152	228	304	380	456	
USF3030**	76	152	228	304	380	456	532
USF3624**	98	196	294	392	490	588	
WDU 10	50 AMPS 10MM ² 550VAC (8 AWG)						
USF1212**	18	36					
USF1612**	28	56					
USF1616**	28	56	84				
USF2016**	38	76	114				
USF2020**	38	76	114	152			
USF2416**	48	96	144				
USF2420**	48	96	144	192			
USF2424**	48	96	144	192	240		
USF3020**	60	120	180	240			
USF3024**	60	120	180	240	300		
USF3030**	60	120	180	240	300	360	420
USF3624**	78	156	234	312	390		
WDU 16	66 AMPS 16MM ² 690VAC (6 AWG 600VAC)						
USF1212**	14	28					
USF1612**	22	44					
USF1616**	22	44	66				
USF2016**	30	60	90				
USF2020**	30	60	90	120			
USF2416**	39	78	117				
USF2420**	39	78	117	156			
USF2424**	39	78	117	156	195		
USF3020**	48	96	144	192			
USF3024**	48	96	144	192	240		
USF3030**	48	96	144	192	240	288	
USF3624**	63	126	189	252	315		
WDU 35	109 AMPS 35MM ² 690VAC (2 AWG 600VAC)						
USF1212**	10						
USF1612**	17						
USF1616**	17	34					
USF2016**	23	46					
USF2020**	23	46	69				
USF2416**	29	58					
USF2420**	29	58	87				
USF2424**	29	58	87				
USF3020**	37	74	111				
USF3024**	37	74	111				
USF3030**	37	74	111	148			
USF3624**	48	96	144				

ZDU 2.5	21 AMPS 2.5MM ² 550VAC (14 AWG)						
	1 ROW	2 ROWS	3 ROWS	4 ROWS	5 ROWS	6 ROWS	7 ROWS
USF1212**	35	70					
USF1612**	55	110					
USF1616**	55	110	165				
USF2016**	75	150	225				
USF2020**	75	150	225	300			
USF2416**	95	190	285				
USF2420**	95	190	285	380			
USF2424**	95	190	285	380	475	570	
USF3020**	118	236	354	472			
USF3024**	118	236	354	472	590	708	
USF3030**	118	236	354	472	590	708	826
USF3624**	153	306	459	612	765	918	
ZDU 4	28 AMPS 4MM ² 550VAC (12 AWG)						
USF1212**	29	58					
USF1612**	45	90					
USF1616**	45	90	135				
USF2016**	62	124	186				
USF2020**	62	124	186	248			
USF2416**	79	158	237				
USF2420**	79	158	237	316			
USF2424**	79	158	237	316	395	474	
USF3020**	98	196	294	392			
USF3024**	98	196	294	392	490	588	
USF3030**	98	196	294	392	490	588	686
USF3624**	127	254	381	508	635	762	
ZDU 6	36 AMPS 6MM ² 550VAC (10 AWG)						
USF1212**	21	42					
USF1612**	34	68					
USF1616**	34	68	102				
USF2016**	46	92	138				
USF2020**	46	92	138	184			
USF2416**	59	118	177				
USF2420**	59	118	177	236			
USF2424**	59	118	177	236	295		
USF3020**	73	146	219	292			
USF3024**	73	146	219	292	365		
USF3030**	73	146	219	292	365	438	511
USF3624**	95	190	285	380	475		
ZDU 10	50 AMPS 10MM ² 550VAC (8 AWG)						
USF1212**	17	35					
USF1612**	27	54					
USF1616**	27	54					
USF2016**	37	74					
USF2020**	37	74	111				
USF2416**	47	94					
USF2420**	47	94	141				
USF2424**	47	94	141	188			
USF3020**	59	118	177				
USF3024**	59	118	177	236			
USF3030**	59	118	177	236	295		
USF3624**	76	152	228	304			
ZDU 16	66 AMPS 16MM ² 690VAC (6 AWG 600VAC)						
USF1212**	14	28					
USF1612**	22	44					
USF1616**	22	44	66				
USF2016**	30	60	90				
USF2020**	30	60	90	120			
USF2416**	39	78	117				
USF2420**	39	78	117	156			
USF2424**	39	78	117	156	195		
USF3020**	48	96	144	192			
USF3024**	48	96	144	192	240		
USF3030**	48	96	144	192	240	288	
USF3624**	63	126	189	252	315		
ZDU 35	109 AMPS 35MM ² 690VAC (2 AWG 600VAC)						
USF1212**	11						
USF1612**	17						
USF1616**	17						
USF2016**	23						
USF2020**	23	46					
USF2416**	29						
USF2420**	29	58					
USF2424**	29	58					
USF3020**	37	74					
USF3024**	37	74					
USF3030**	37	74	111				
USF3624**	48	96					

WDU 2.5N	15 AMPS 2.5MM ² 440VAC (14 AWG)								
	1 ROW	2 ROWS	3 ROWS	4 ROWS	5 ROWS	6 ROWS	7 ROWS	8 ROWS	9 ROWS
USF1212**	34	68	102	136					
USF1612**	54	108	162	216					
USF1616**	54	108	162	216					
USF2016**	74	148	222	296					
USF2020**	74	148	222	296	370				
USF2416**	94	188	282	376					
USF2420**	94	188	282	376	470				
USF2424**	94	188	282	376	470	564	658		
USF3020**	118	236	354	472	590				
USF3024**	118	236	354	472	590	708	826		
USF3030**	118	260	354	472	590	708	826	944	1062
USF3624**	153	306	459	612	765	918	1377		
WDU 4N	27 AMPS 4MM ² 440VAC (12 AWG)								
USF1212**	29	58							
USF1612**	45	90							
USF1616**	45	90	135						
USF2016**	62	124	186						
USF2020**	62	124	186	248	310				
USF2416**	79	158	237						
USF2420**	79	158	237	316	395				
USF2424**	79	158	237	316	395	474	553		
USF3020**	98	196	294	392	490				
USF3024**	98	196	294	392	490	588	686		
USF3030**	98	260	294	392	490	588	686	784	882
USF3624**	127	254	381	508	635	762	1143		
WDK 2.5N	21 AMPS 2.5MM ² 550VAC (14 AWG) DOUBLE POLE FEED THROUGH								
USF1212**	33	66							
USF1612**	53	106							
USF1616**	53	106	159						
USF2016**	73	146	219						
USF2020**	73	146	219	292					
USF2416**	93	186	279						
USF2420**	93	186	279	372					
USF2424**	93	186	279	372	465	558			
USF3020**	116	232	348	464					
USF3024**	116	232	348	464	580	696			
USF3030**	116	232	348	464	580	69			