



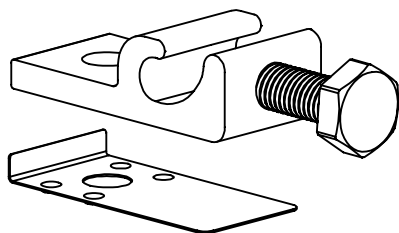
Washer, Electrical Equipment Bond

WEEB

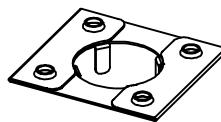
INSTALLATION INSTRUCTIONS
For PV Racking Roof Mount

Please read carefully before installing.

BURNDY LLC recommends that the sufficient details of the installation be submitted to the AHJ for approval before any work is started.



WEEBLug-6.7



WEEB-11.5

Products are tested to UL 467, CAN/CSA-C22.2 No. 41
US/Canadian standards for safety grounding and bonding equipment **3098177**



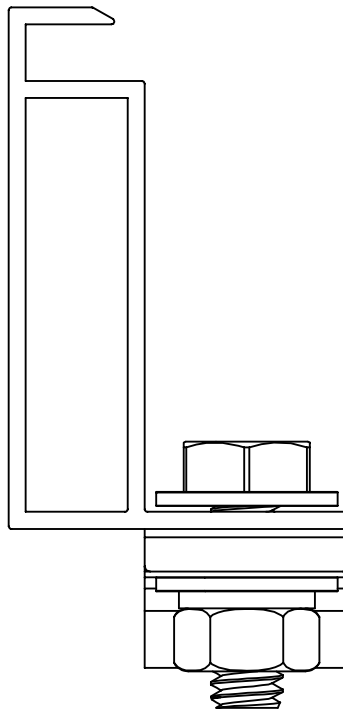
WEEB COMPATIBILITY

The WEEB family of products can be used to bond anodized aluminum, galvanized steel, steel and other electrically conductive metal structures. All installations shall be in accordance with NEC requirements in the USA and with CSA C22.1 in Canada. The WEEBs are for use with modules that have a maximum series fuse rating of less than 25A.

Installing Ground Lugs

The WEEB-11.5 is only used in this application to provide a ground solution between the vertical and horizontal rails. It **DOES NOT** provide a ground solution for the individual modules. Wiley's recommendation for grounding module frames is using (1) WEEBLug-6.7 per module.

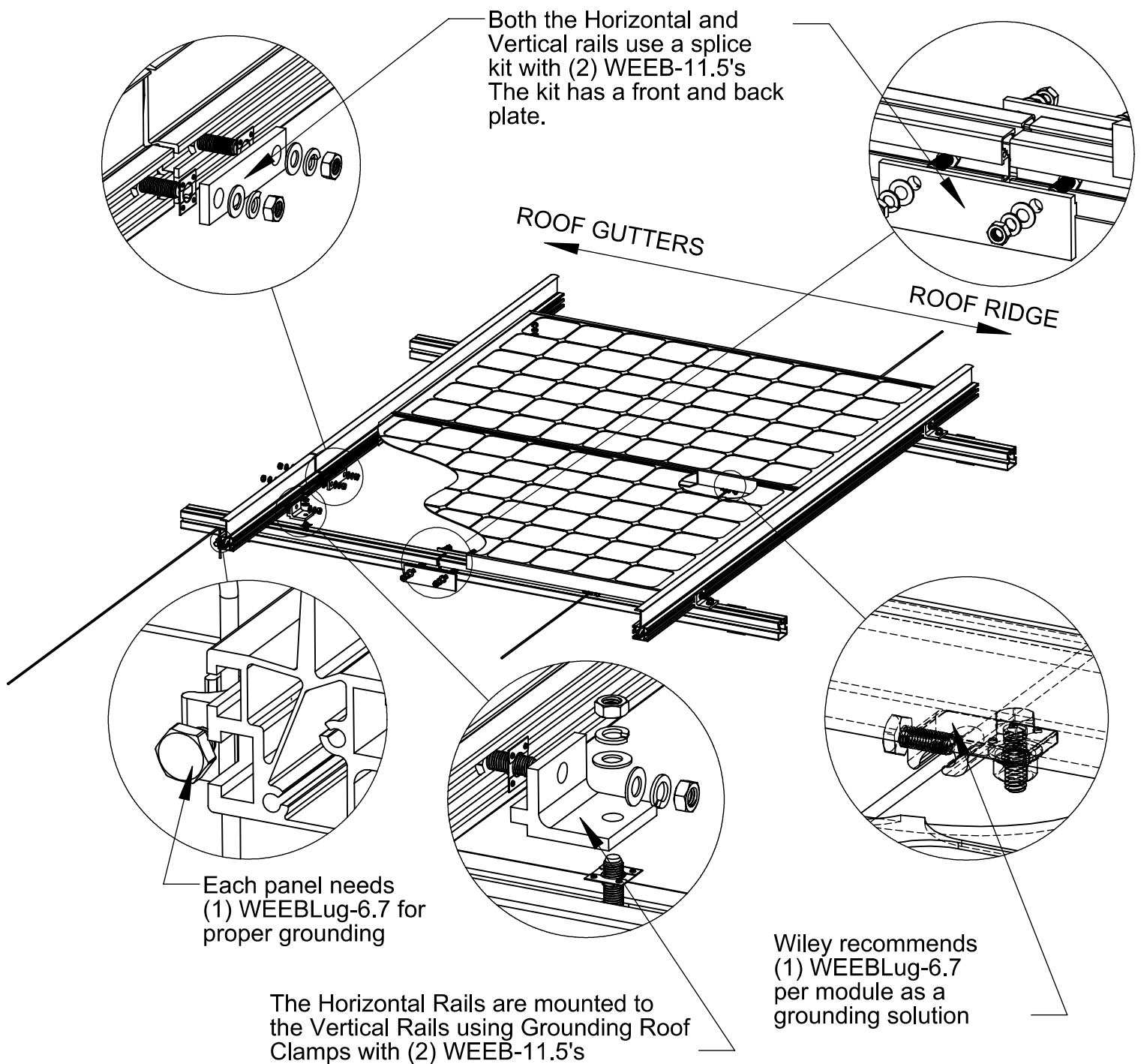
The WEEBLugs used for grounding the PV modules are compatible with various cross-sections of module frames.



Important Note:

Inspect each module frame used with a WEEB to ensure that the bottom mounting face of the frame is flat, and that there are no hinderances to embedding WEEB teeth. Do not use a module with a frame that prevents the WEEB teeth from embedding fully.

SYSTEM OVERVIEW



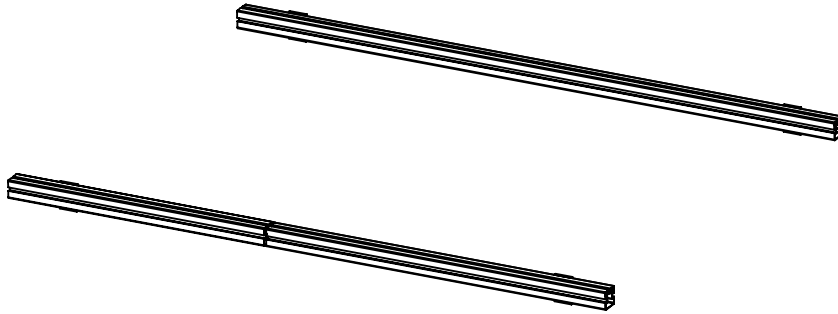
Important notes

1. Use general purpose anti-seize compound on fastener threads when installing WEEBs.
2. The NEC section 690.43 states, "Exposed non-current carrying metal parts of module frames, equipment, and conductor enclosures shall be grounded in accordance with 250.134 or 250.136(A) regardless of voltage."
3. WEEBs are intended for **SINGLE USE ONLY**. Functionality will not be guaranteed if reused.

WEEB-11.5 ASSEMBLY

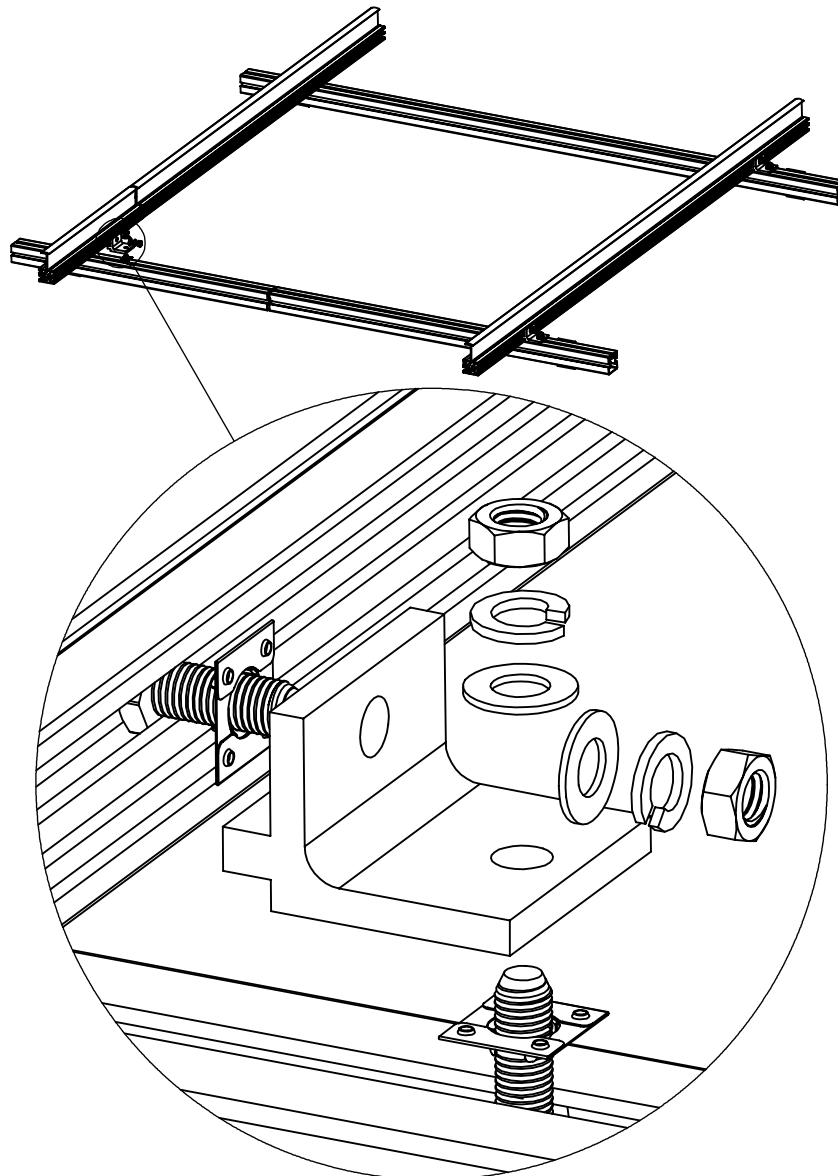
①

LAY OUT AND INSTALL VERTICAL RAILS ACCORDING TO MANUFACTURERS SPECIFICATIONS



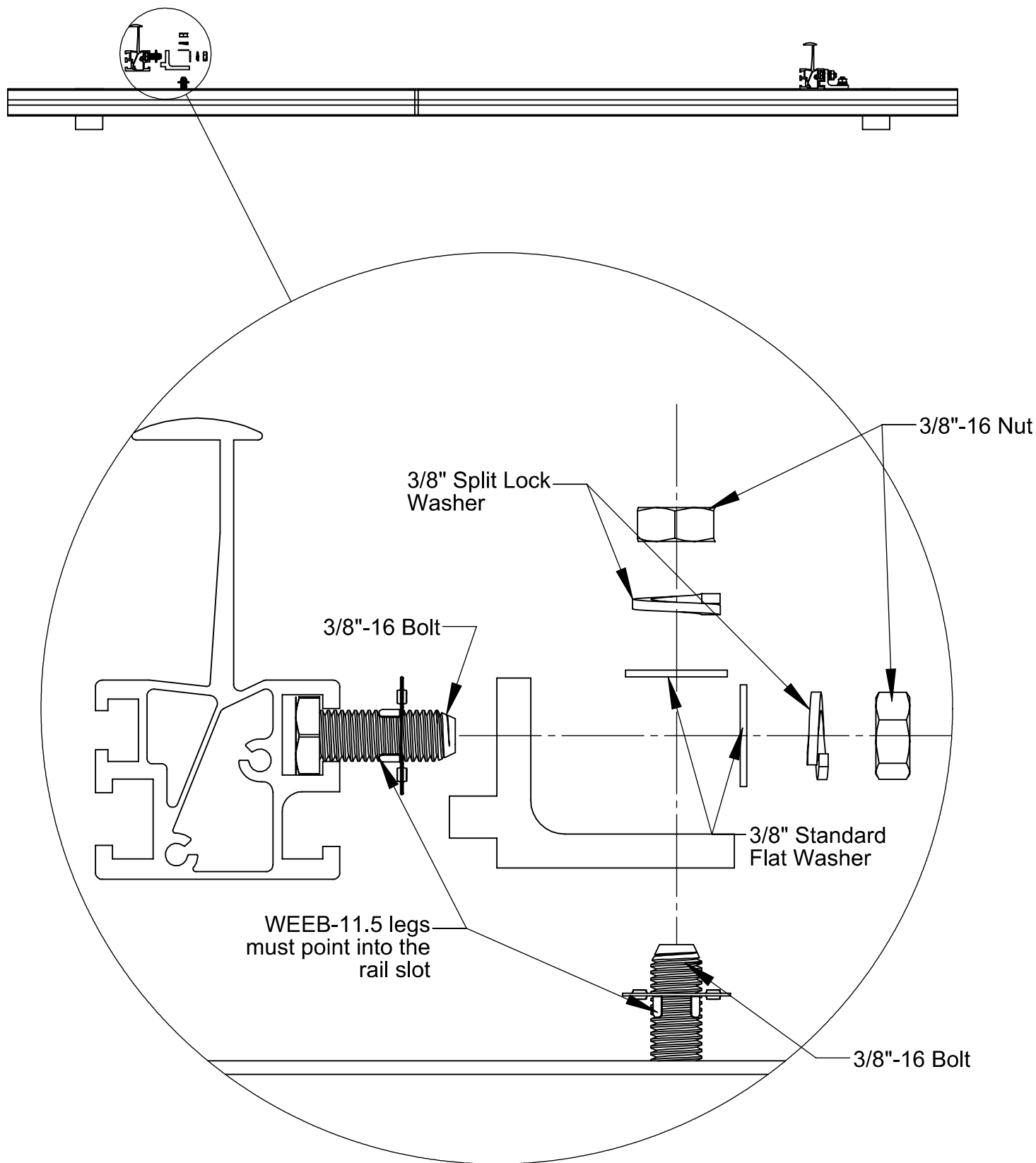
②

LAY OUT AND ATTACH THE HORIZONTAL RAILS TO THE VERTICAL RAILS USING THE GROUNDING ROOF CLAMP, WEEB-11.5's AND THE FOLLOWING HARDWARE CONFIGURATION



WEEB-11.5 ASSEMBLY

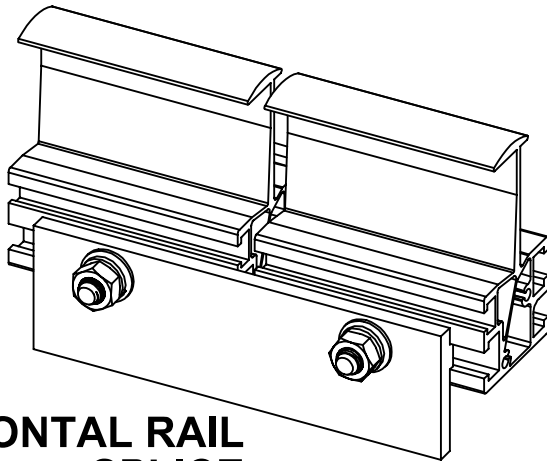
② CONTINUED



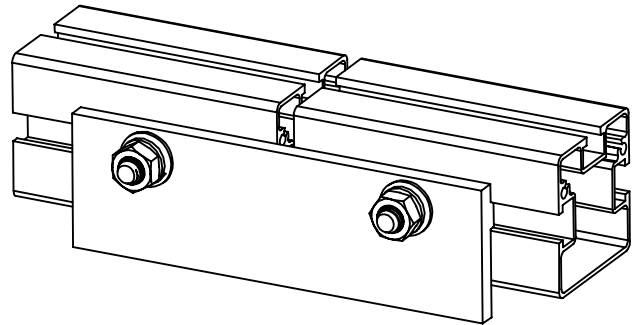
**TORQUE ALL 3/8"-16 FASTENERS TO 15 ft-lbs / 20.5 N-m
USING GENERAL PURPOSE ANTI-SEIZE COMPOUND ON THREADS**

WEEB-11.5 ASSEMBLY

- ③ **TORQUE ALL 3/8"-16 FASTENERS TO 15 ft-lbs / 20.5 N-m
USING GENERAL PURPOSE ANTI-SEIZE COMPOUND ON THREADS**

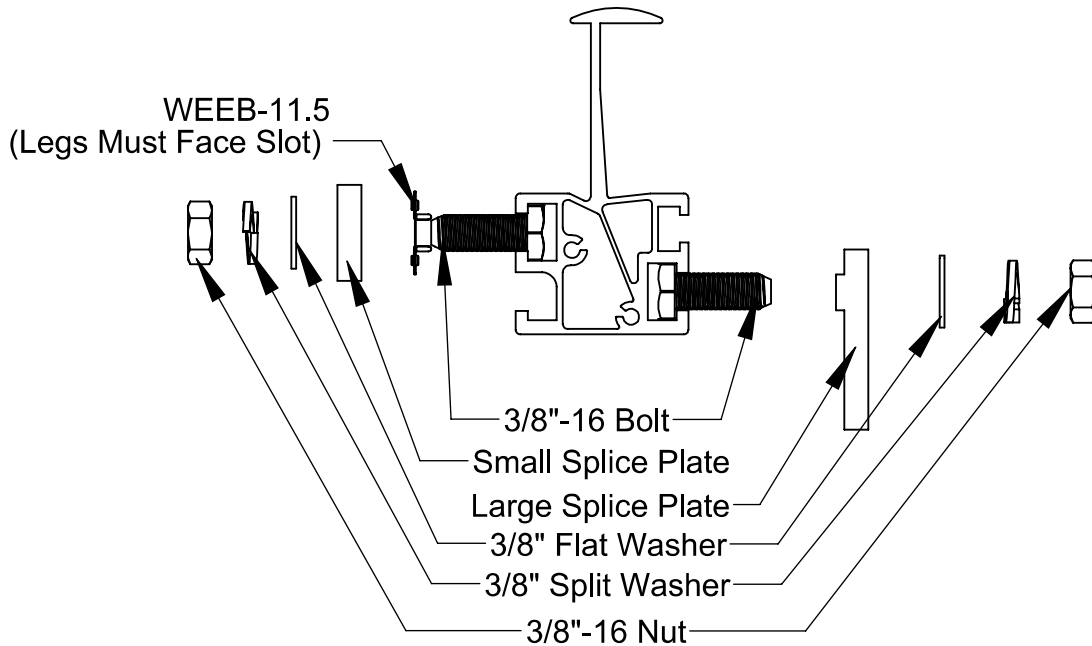


**HORIZONTAL RAIL
SPLICE**

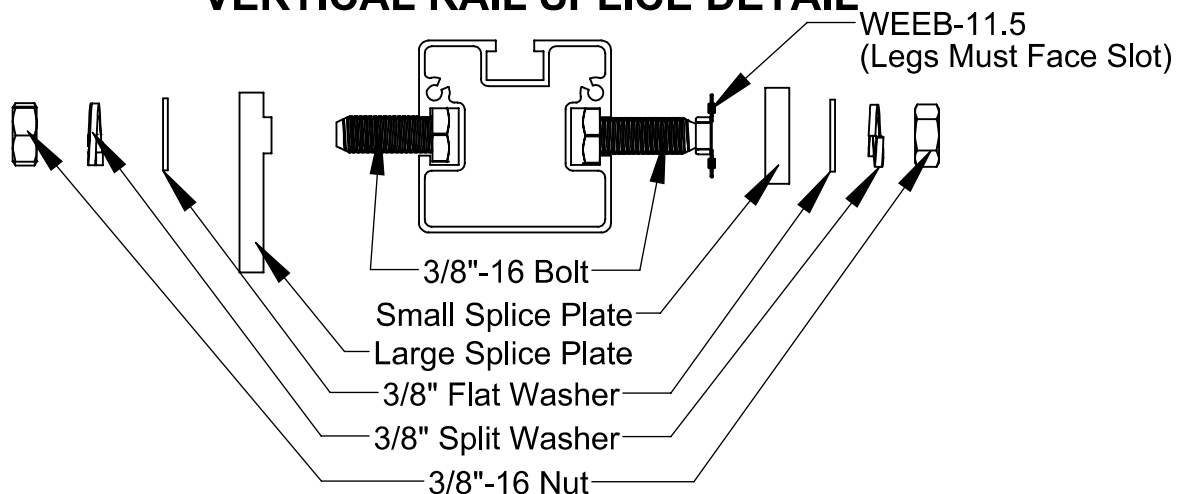


**VERTICAL RAIL
SPLICE**

HORIZONTAL RAIL SPLICE DETAIL



VERTICAL RAIL SPLICE DETAIL



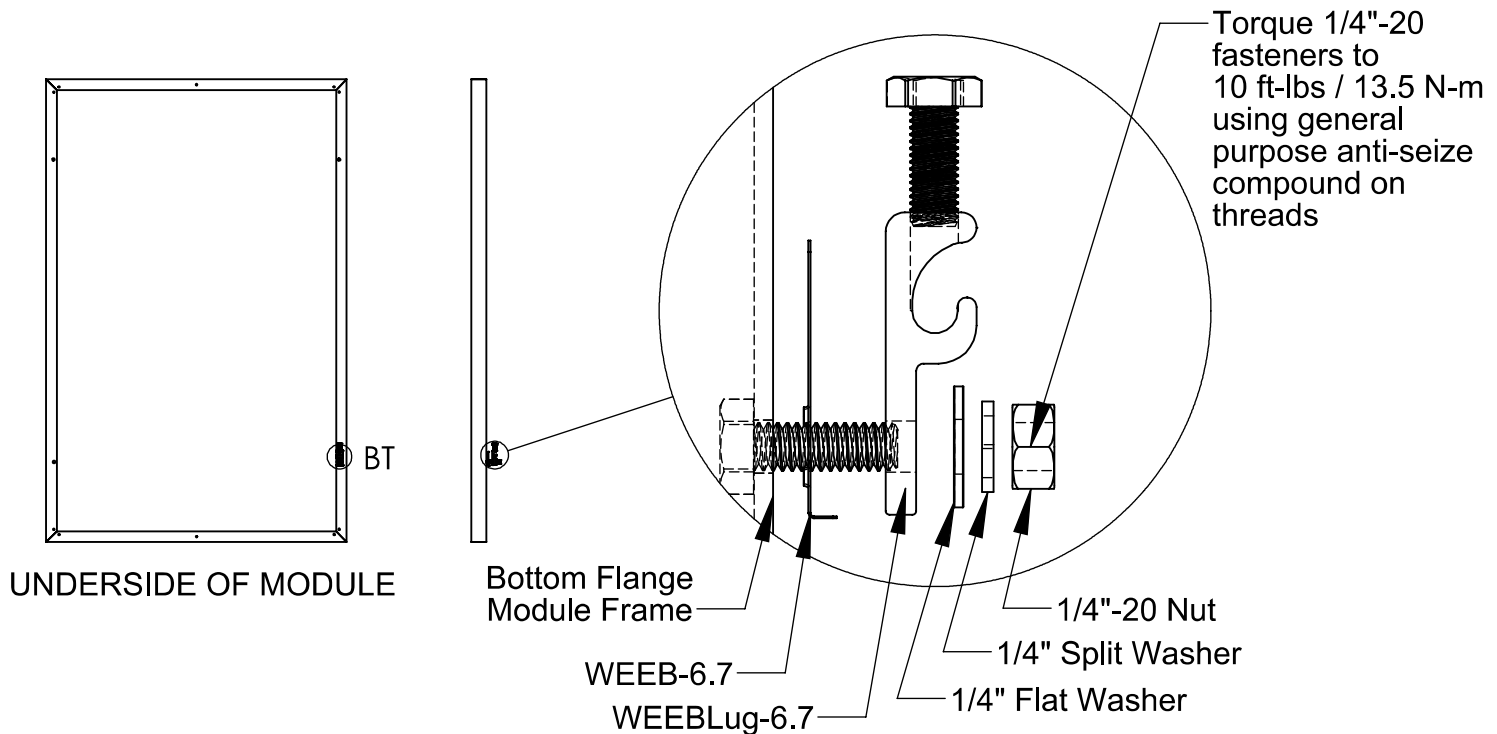
WEEB-11.5 ASSEMBLY

④

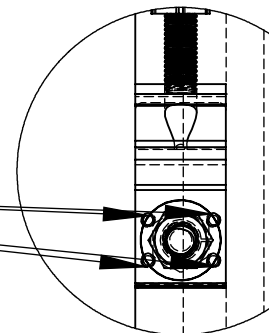
IMPORTANT NOTE:

The WEEB-11.5 installed in steps 1-3 only provides a grounding solution between the horizontal rails and the vertical rails it does not provide a grounding solution for each individual module.

Steps 4-5 are Wiley's recommendation for grounding modules.



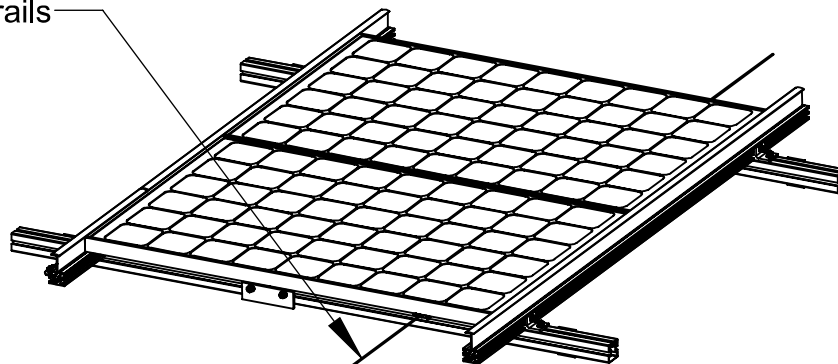
GROUND HOLE SIZE AND ORIENTATION VARY FROM MODULE COMPANY TO MODULE COMPANY. BEFORE INSTALLING THE WEEBLug-6.7 VERIFY THAT ALL TEETH WILL EMBED



DETAIL BT
SCALE 2 : 3

⑤

Before installing modules run the ground wire above the vertical rails

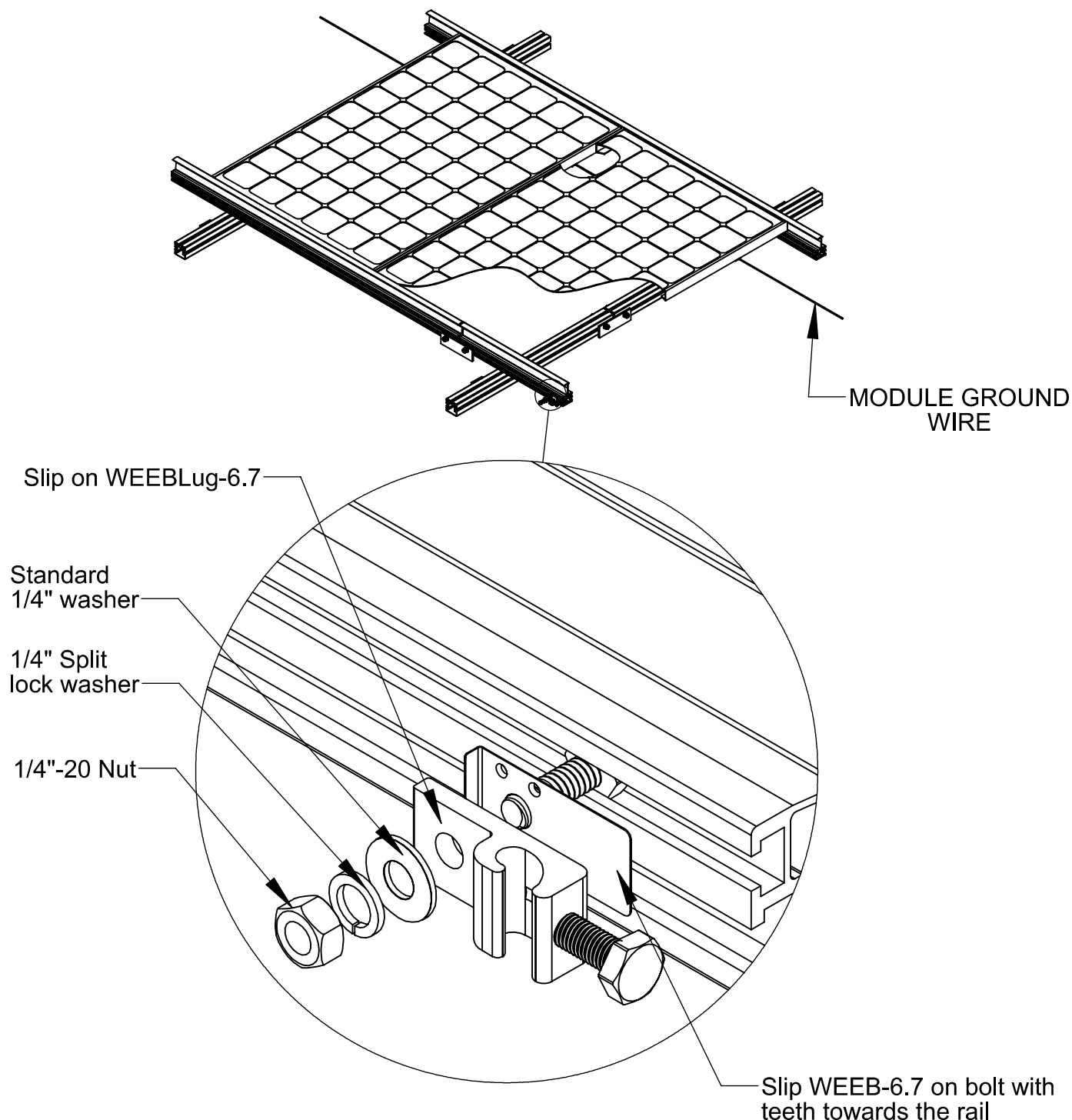


⑥

WEEBLUG ASSEMBLY

(1) WEEBLug-6.7 MUST BE INSTALLED PER PANEL

Install WEEBLug-6.7 assembly and torque 1/4"-20 fasteners to 10 ft-lbs / 13.5 N-m using general purpose anti-seize compound on threads.

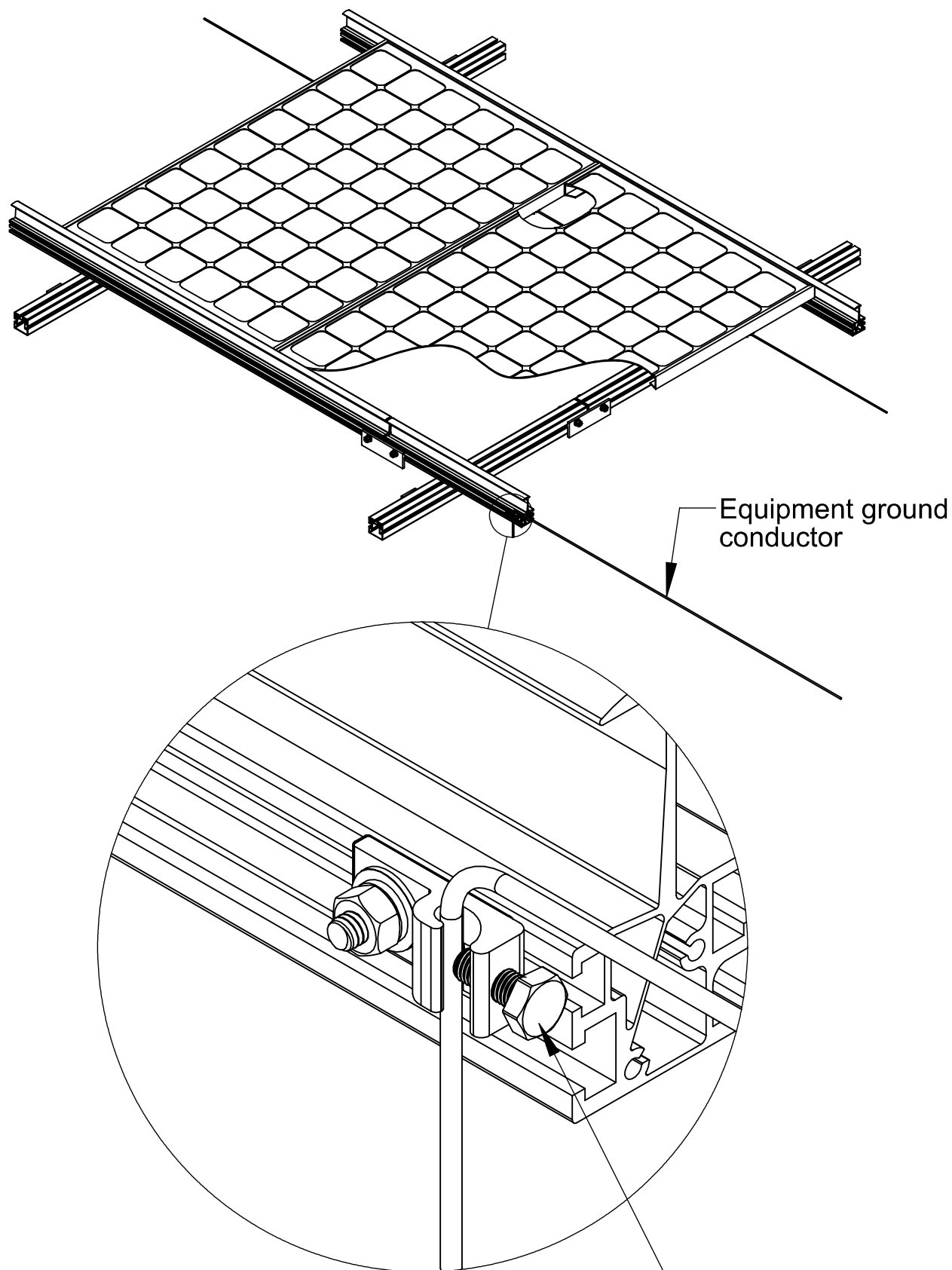


Important note:

1. WEEB-6.7 that sits under the WEEBLug is for **SINGLE USE ONLY**. Ensure position is correct before tightening down.
2. The WEEBLug-6.7 may be used with a maximum equipment ground wire of 6 AWG.

GROUND CONDUCTOR ASSEMBLY

7



Lay in equipment ground conductor and tighten bolt to 7 ft-lb / 10 N-m.

Customer Service Department
7 Aviation Park Drive
Londonderry, NH 03053
1-800-346-4175
1-603-647-5299 (International)

Document Number 104-0404-000069-001
© 2012 BURNDY LLC.