



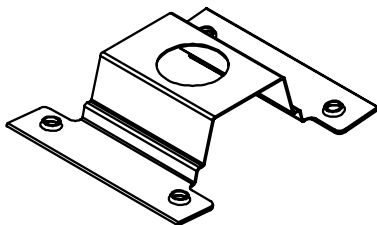
Washer, Electrical Equipment Bond

# WEEB<sup>®</sup> WASHER

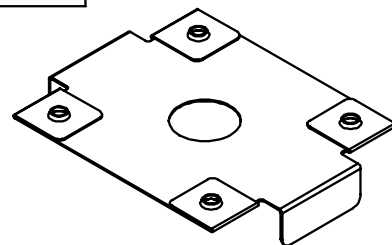
## INSTALLATION INSTRUCTIONS

*For OPSUN SunRail Lite 1 Layer,  
SunRail Lite 2 Layer, SunRail Lite Classic,  
SunRail Structure, SunGround and  
SunRail Universal Solar Mounting System Only*

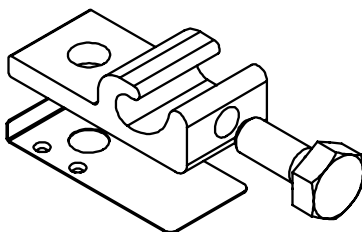
Burndy LLC recommends that the sufficient details of the installation be submitted to the AHJ for approval before any work is started.



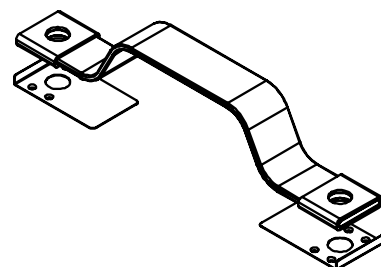
WEEB-OSF



WEEB-SSR



WEEB-LUG-6.7



WEEB-BNDJMP8.0



Products are tested to UL 467, CAN/CSA-C22.2 No. 41  
US/ Canadian standards for safety grounding and bonding equipment.

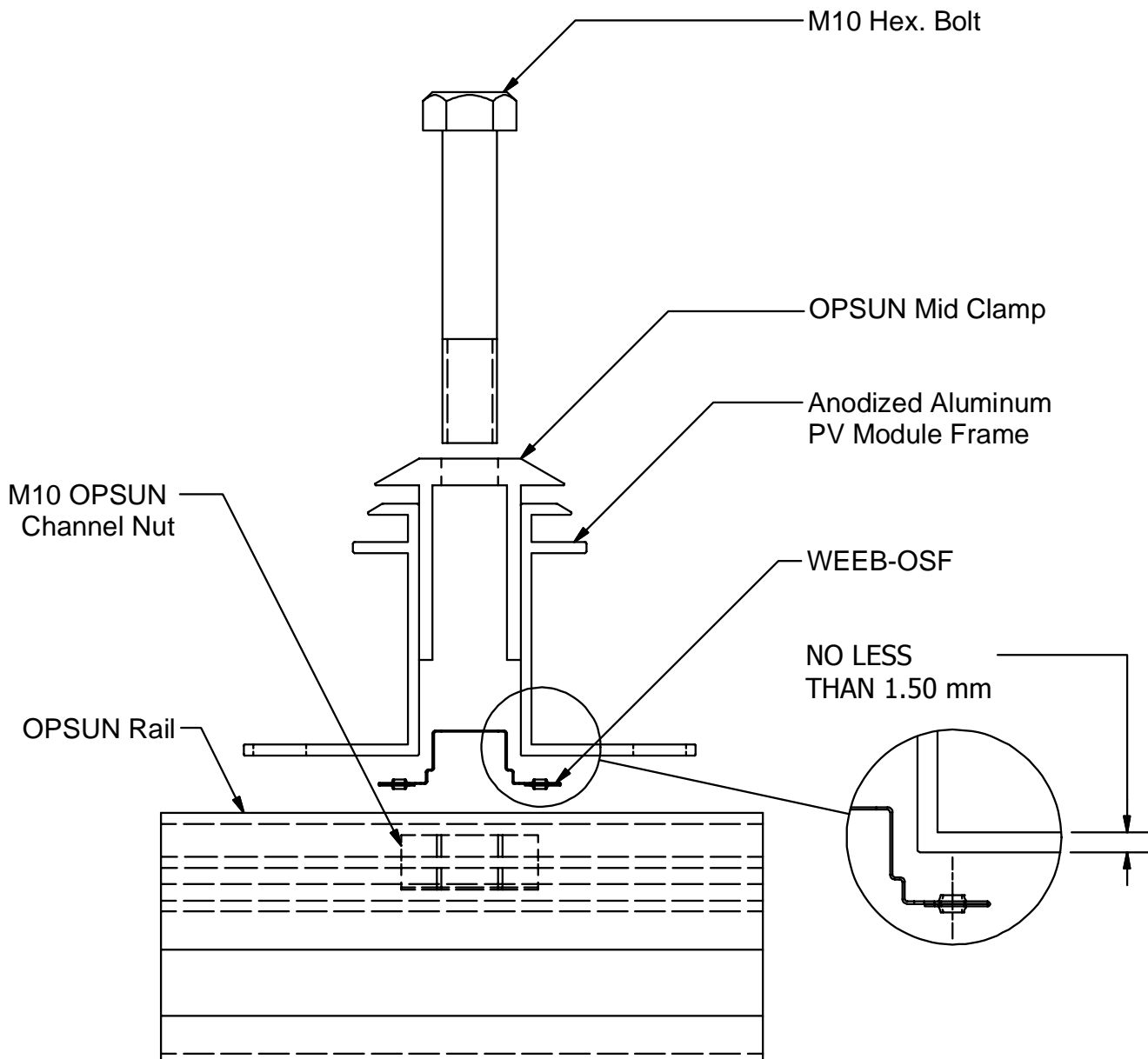


Intertek  
4004188

# WEEB-OSF COMPATIBILITY

The WEEB® washer family of products can be used to bond anodized aluminum, galvanized steel, steel and other electrically conductive metal structures. All installations shall be in accordance with NEC requirements in the USA and with CSA C22.1 in Canada. The WEEB® washers are for use with modules that have a maximum fuse rating of less than 25A.

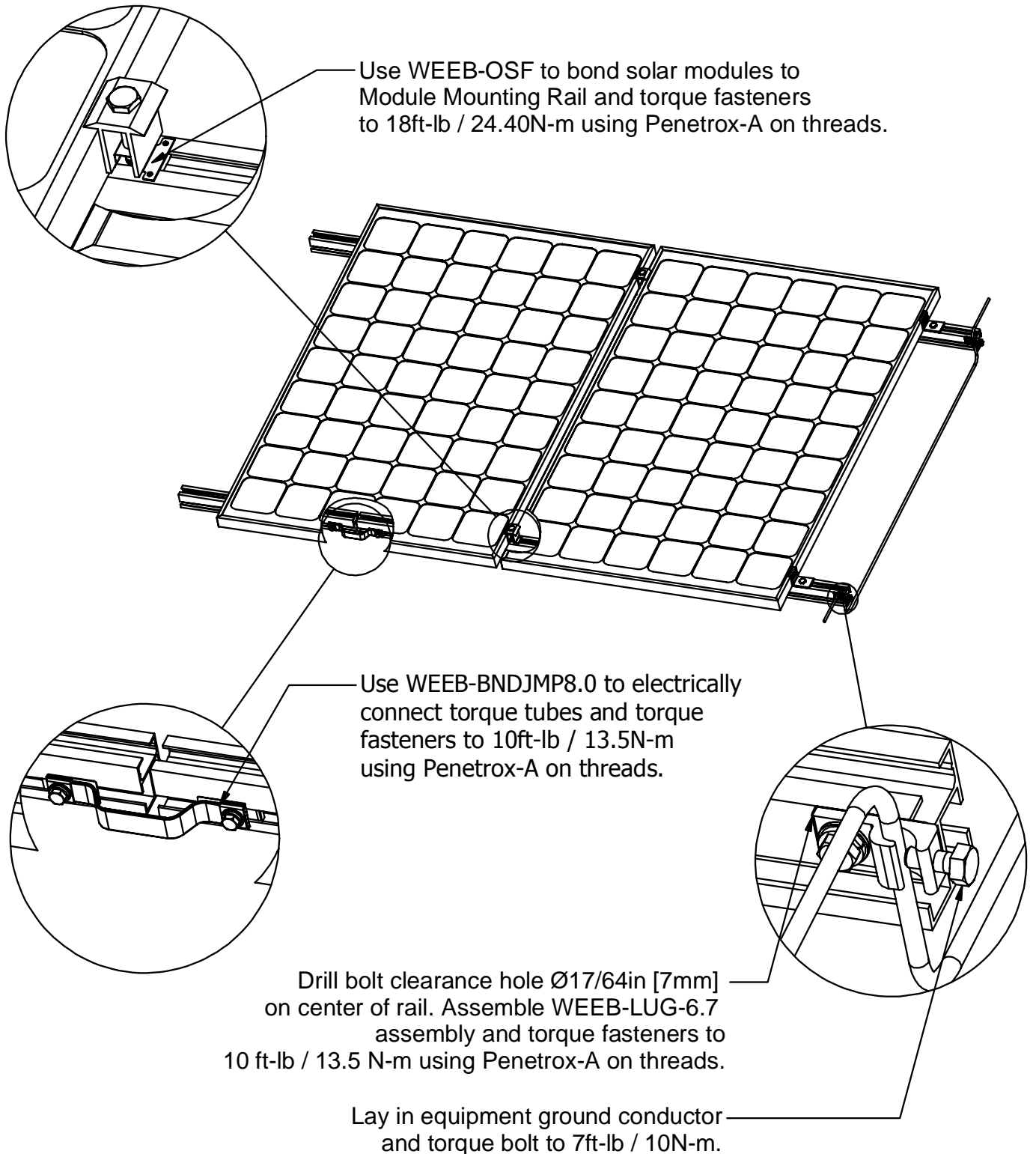
Certain module frames do not have enough structural strength to withstand the force required to embed a WEEB® washer. These frames will deform and therefore not allow sufficient penetration of the WEEB® washer teeth. The general requirements for minimum module frame thickness of "C-shape" type module frames are illustrated below. For more information regarding module compatibility, please see the technical documents section of our website.



## Note:

**Inspect each module frame used with a WEEB® device to ensure that the bottom mounting face of the frame is flat, and that there are no hindrances to embedding WEEB® washer teeth. Do not use a module with a frame that prevents the WEEB® washer teeth from embedding fully.**

# SYSTEM OVERVIEW

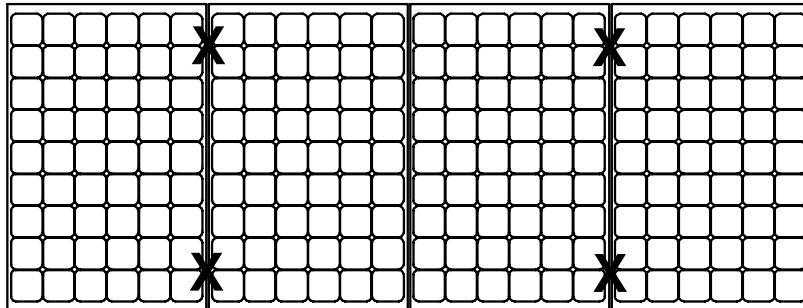


## Important notes:

1. Use general purpose anti-seize compound on fastener threads when installing WEEB® washers.
2. The NEC section 690.43 states “Exposed non-current carrying metal parts of module frames, equipment, and conductor enclosures shall be grounded in accordance with 250.134 or 250.136(A) regardless of voltage”.

# WEEB-OSF LAYOUT LANDSCAPE MODULE ORIENTATION

## EVEN NUMBER OF MODULES IN ROW

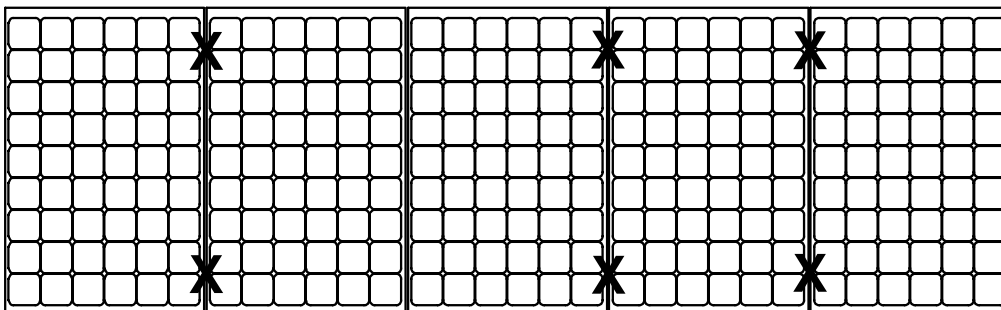


X DENOTES PLACES TO INSTALL WEEB-OSF

$$C \times R = 4 \times 1$$

$$\text{WEEB-OSF NEEDED} = C \times R = 4 \times 1 = 4$$

## ODD NUMBER OF MODULES IN ROW



X DENOTES PLACES TO INSTALL WEEB-OSF

$$C \times R = 5 \times 1$$

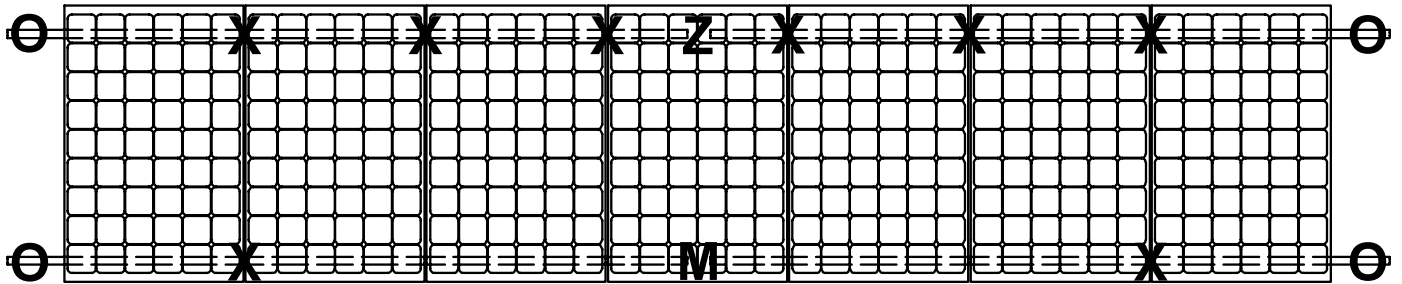
$$\text{WEEB-OSF NEEDED} = (C \times R) + 1 = (5 \times 1) + 1 = 6$$

### Note:

When replacing a single faulty module, also remove the adjacent module which contacts the same WEEB® washers as the faulty module. This will ensure that there are never ungrounded modules in the array.

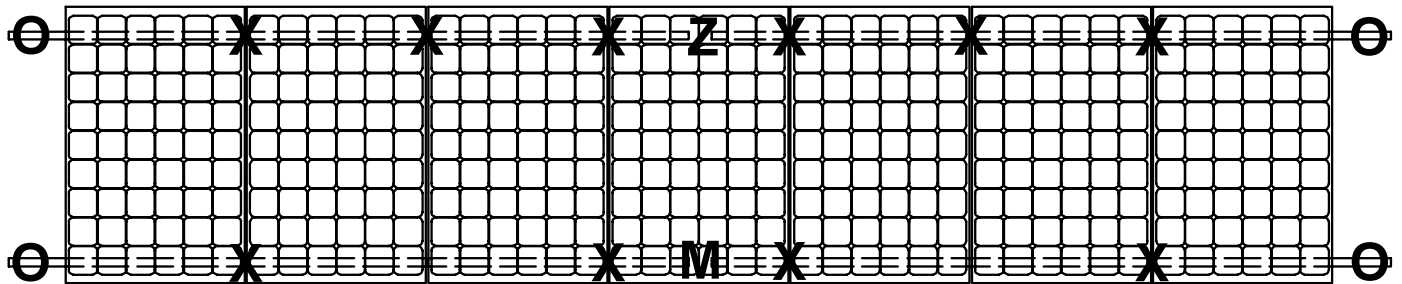
# ALTERNATE LAYOUT CONFIGURATIONS

## CONFIGURATION - 2



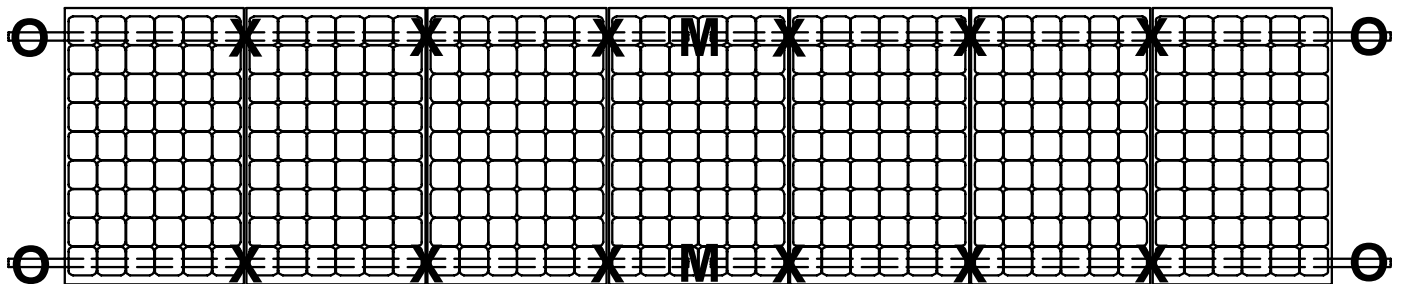
X DENOTES PLACES TO INSTALL WEEB-OSF  
O DENOTES PLACES TO INSTALL WEEB-LUG-6.7  
Z DENOTES PLACES TO INSTALL WEEB-BNDJMP8.0  
M DENOTES PLACES TO INSTALL OPSUN RAIL LINKER (SRL-RL5)

## CONFIGURATION - 3



X DENOTES PLACES TO INSTALL WEEB-OSF  
O DENOTES PLACES TO INSTALL WEEB-LUG-6.7  
Z DENOTES PLACES TO INSTALL WEEB-BNDJMP8.0  
M DENOTES PLACES TO INSTALL OPSUN RAIL LINKER (SRL-RL5)

## CONFIGURATION - 4



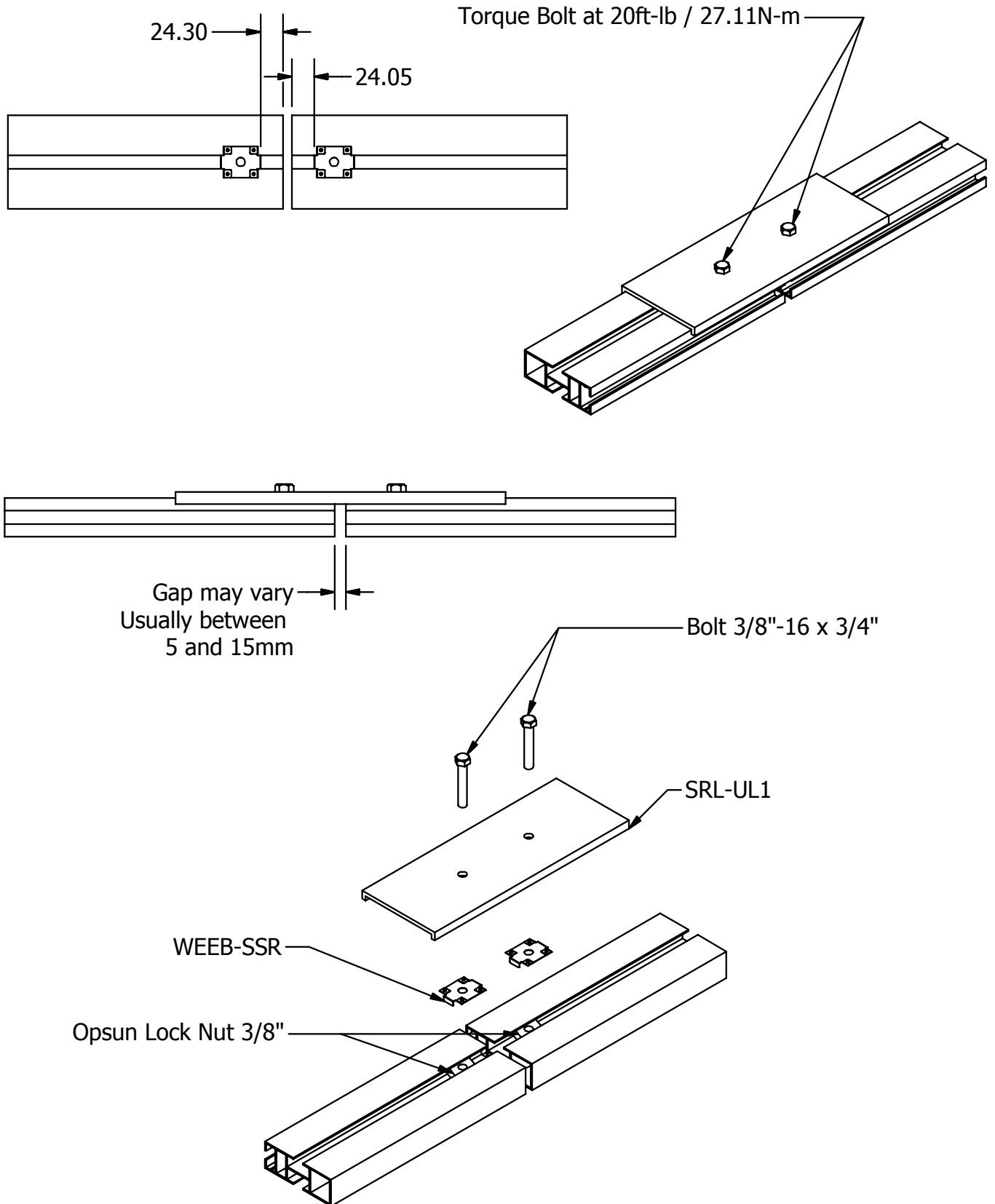
X DENOTES PLACES TO INSTALL WEEB-OSF  
O DENOTES PLACES TO INSTALL WEEB-LUG-6.7  
M DENOTES PLACES TO INSTALL OPSUN RAIL LINKER (SRL-RL5)

### Note:

- 1) Configuration - 2 is only applicable if no more than 2 rail sections are joined.
- 2) Configuration - 3 requires WEEB® washers placed on either side of each rail splice.
- 3) Configuration - 4 requires WEEB® washers placed at each mid clamp.

# SPLICE KIT ASSEMBLY

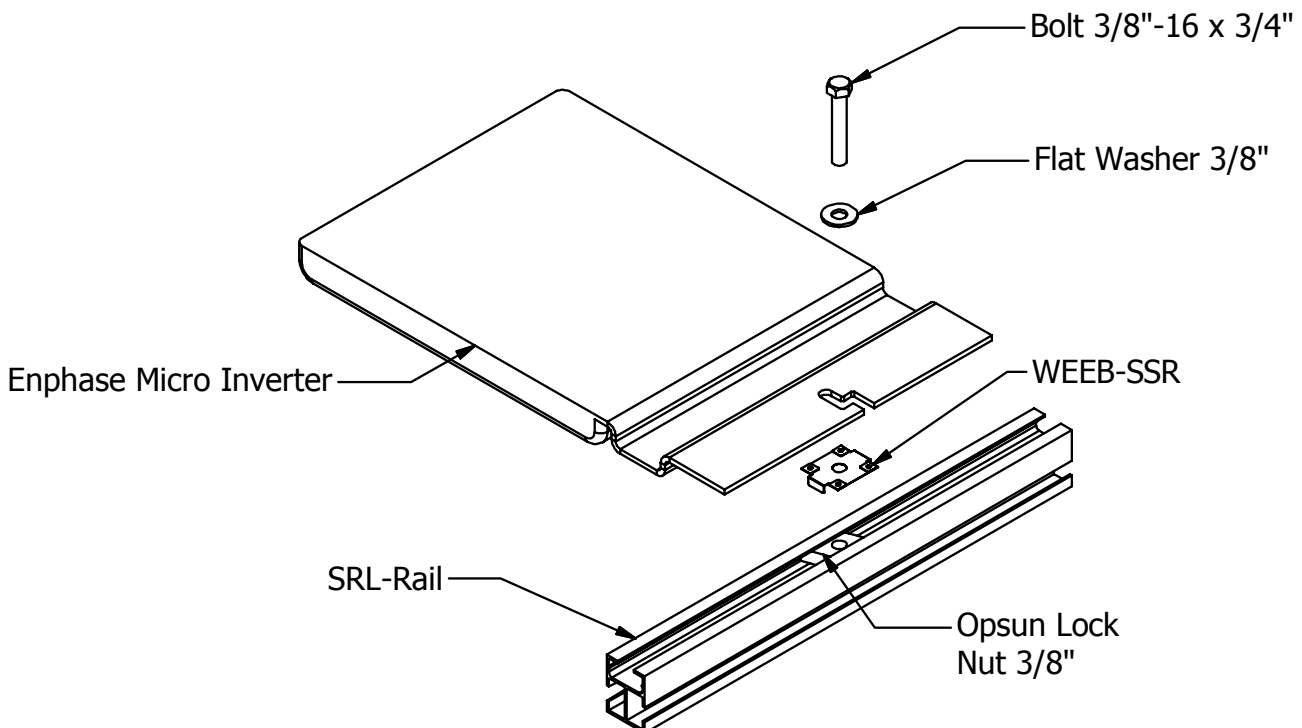
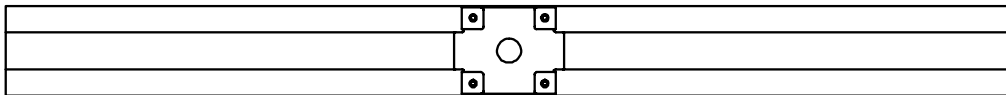
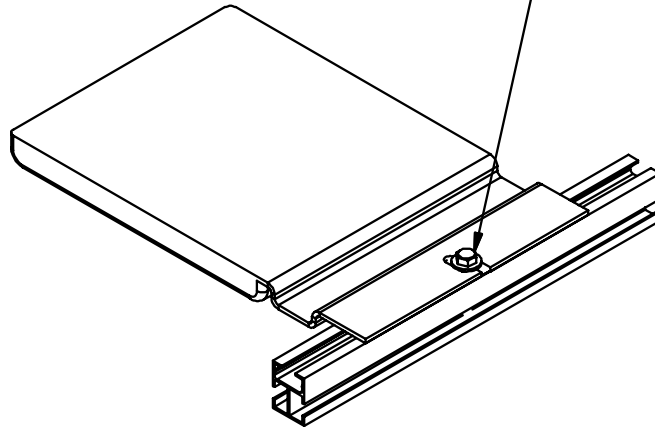
## SR Rails bonding with SR-UL1 & WEEB-SSR



# ENPHASE MICRO INVERTER ASSEMBLY

## SRL-Rail & Enphase Micro Inverter bonding with WEEB-SSR

Torque Bolt at 20ft-lb / 27.11N-m



**Customer Service Department**  
7 Aviation Park Drive  
Londonderry, NH 03053  
1-800-346-4175  
1-603-647-5299 (International)