



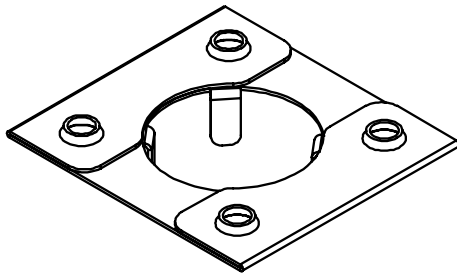
Washer, Electrical Equipment Bond

# WEEB® WASHER

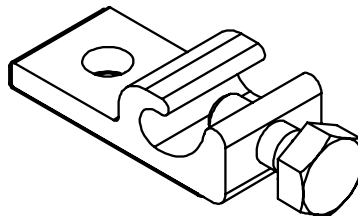
## INSTALLATION INSTRUCTIONS For RBI Solar ProtekPark Direct Connect Parking Structure Only

BURNDY recommends that the sufficient details of the installation be submitted to the AHJ for approval before any work is started.

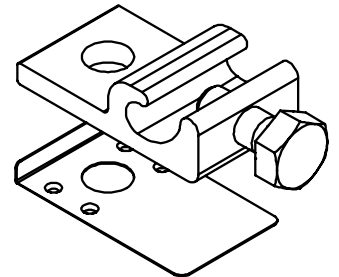
<b>NOTICE</b>	
	<p>PLEASE READ CAREFULLY BEFORE INSTALLING</p>



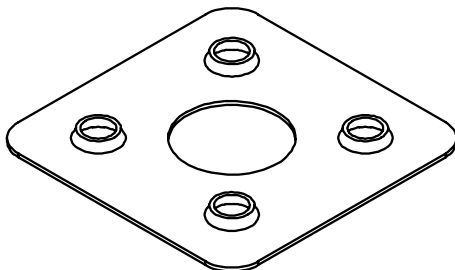
**WEEB-11.5**



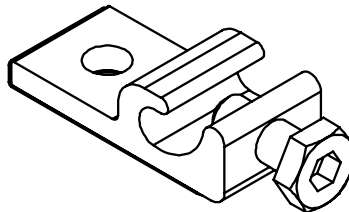
**WEEB-LUG-6.7**



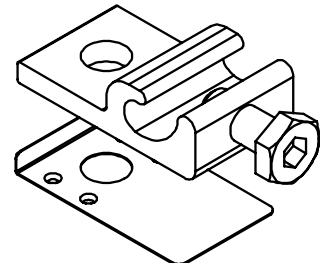
**WEEB-LUG-8.0**



**WEEB-UIR**



**WEEB-LUG-6.7HS**



**WEEB-LUG-8.0HS**



Products are tested to UL 467, CAN/CSA-C22.2 No. 41 US/ Canadian standards for safety grounding and bonding equipment.

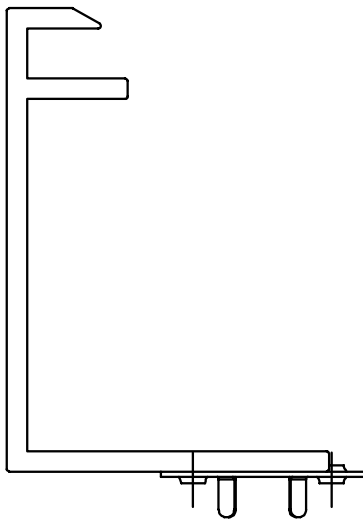
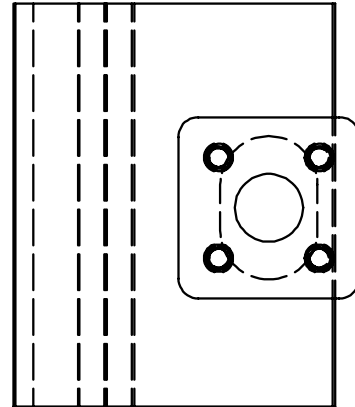
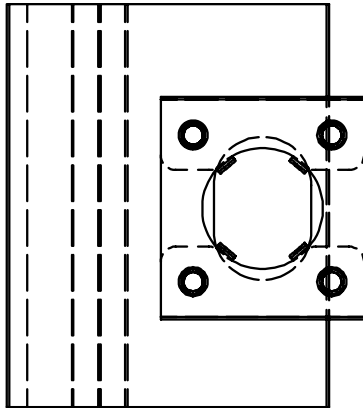


# Contents:

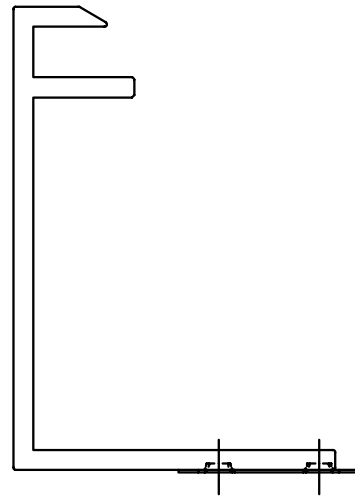
- WEEB® Washer Compatibility with Slotted Hole.....3
  - 5/16" Hardware and WEEB-11.5.....4-10
    - Modules in Portrait Configuration.....5-7
    - Modules in Landscape Configuration.....8-10
  - 1/4" Hardware and WEEB-11.5.....11-17
    - Modules in Portrait Configuration.....12-14
    - Modules in Landscape Configuration.....15-17
  - 1/4" Hardware and WEEB-UIR.....18-24
    - Modules in Portrait Configuration.....18-21
    - Modules in Landscape Configuration .....22-24
- Layout of WEEB-11.5 and WEEB-UIR.....25
- Layout of WEEB-LUG-6.7/WEEB-LUG-8.0.....26-28

# WEEB<sup>®</sup> WASHER COMPATIBILITY

## WEEB-11.5 and WEEB-UIR BOTTOM MOUNT SCENARIO FOR SLOTTED MODULE MOUNTING HOLE



**ONLY (1) WEEB-11.5  
NEEDED PER MODULE**



**ONLY (1) WEEB-UIR  
NEEDED PER MODULE**

### Note:

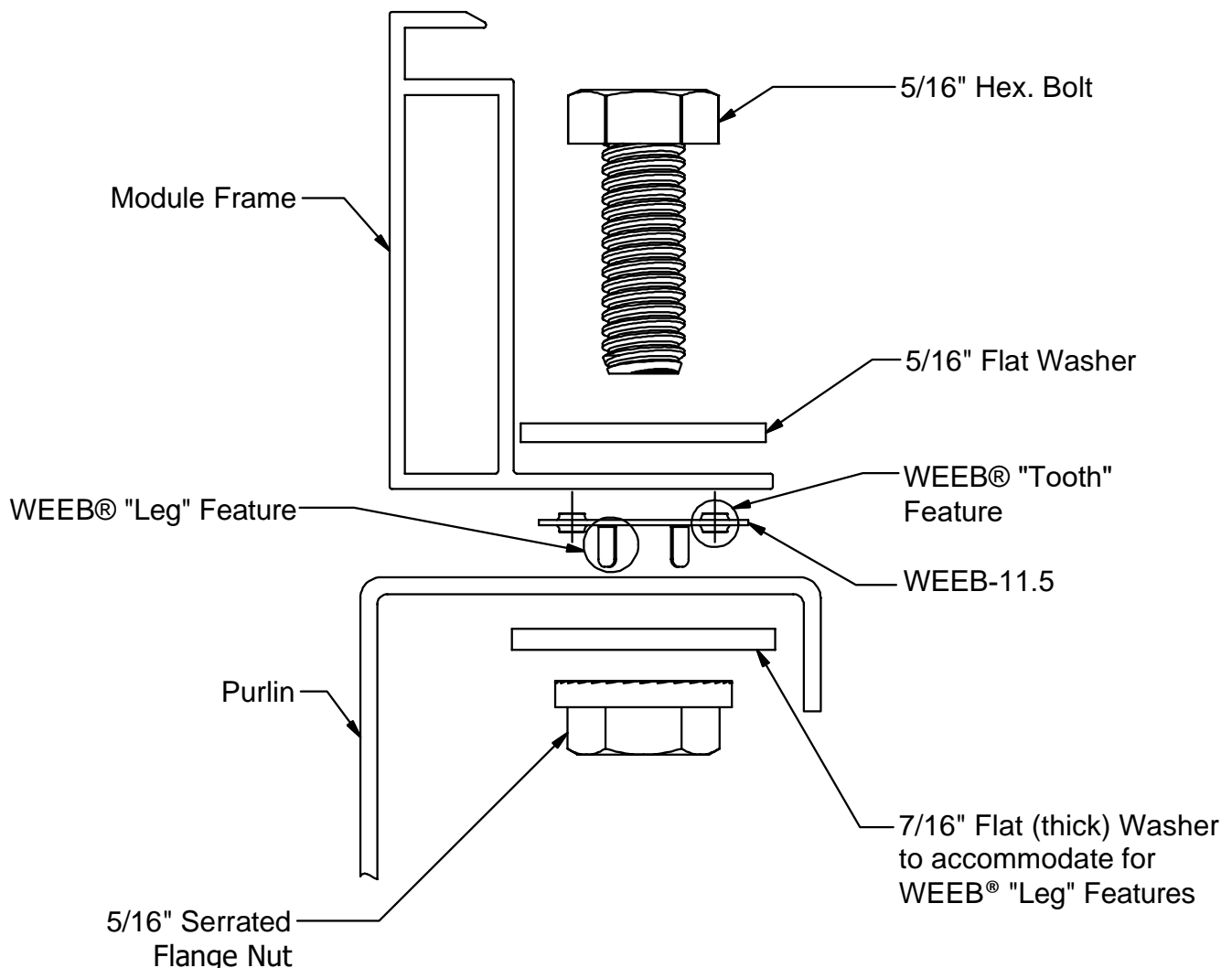
At least two teeth of WEEB-11.5 must embed to the module frame.  
At least two teeth of WEEB-UIR must embed to the module frame.

# WEEB-11.5 COMPATIBILITY

The WEEB® washer family of products can be used to bond anodized aluminum, galvanized steel, steel, and other electrically conductive metal structures. Metal racking components conforming to ASTM A653, A1046, and A792 standards have been evaluated and may be used in systems utilizing the WEEB® washer family of products. All installations shall be in accordance with NEC requirements in the USA and with CSA C22.1 in Canada. The WEEB® washers are for use with modules that have a maximum fuse rating of less than 25A.

## Bottom Mounting Modules requiring 5/16" Hardware

The WEEB® washers used for bonding the PV modules to the mounting rails are compatible with various cross-sections of module frames. The following is an example of a module frame that is compatible. Notice that the WEEB® washer teeth are positioned completely under the edge of the module frame.

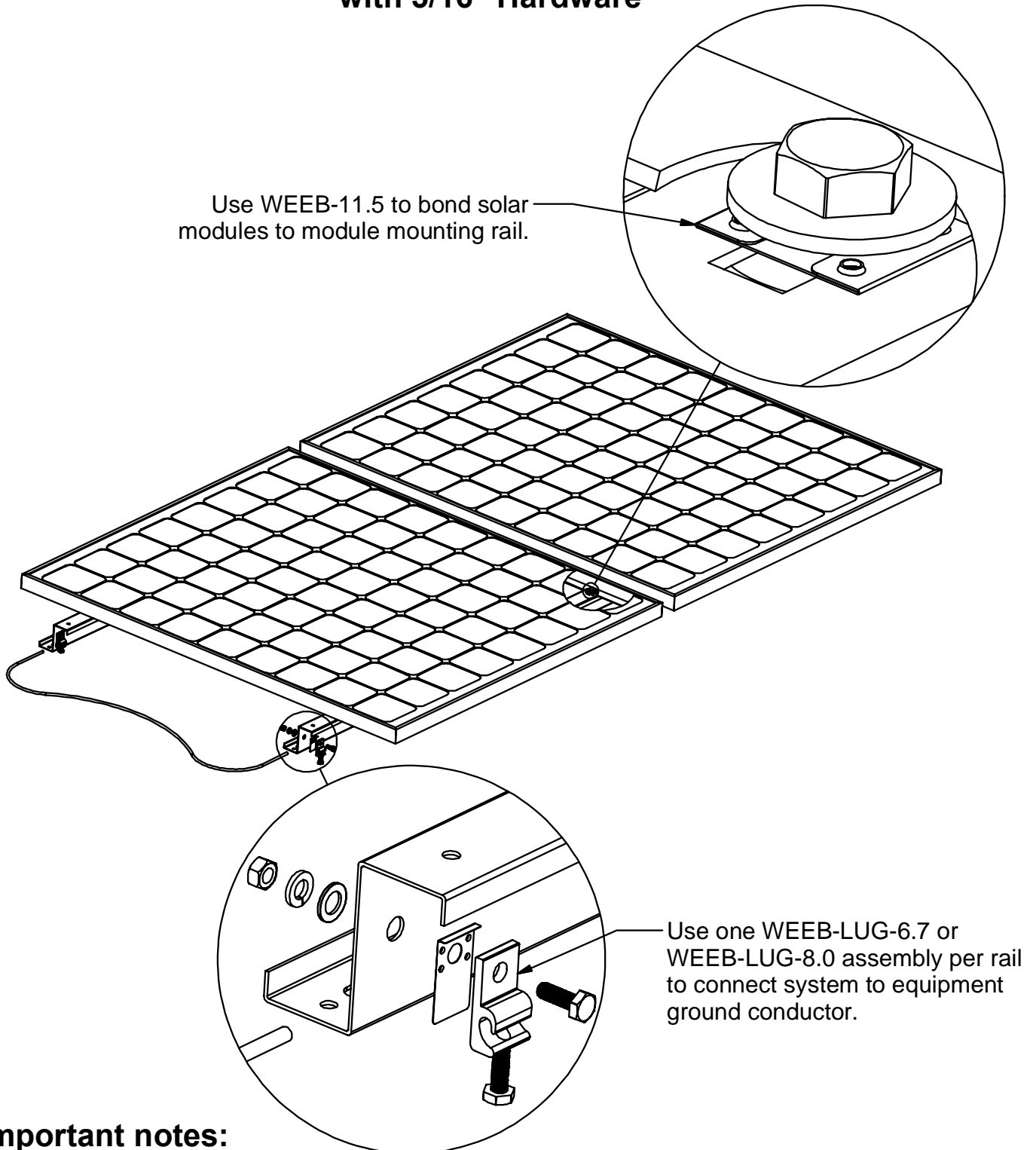


### Note:

Inspect each module frame used with a WEEB® device to ensure that the bottom mounting face of the frame is flat, and that there are no hindrances to embedding WEEB® washer teeth. Do not use a module with a frame that prevents the WEEB® washer teeth from embedding fully.

# SYSTEM OVERVIEW

## WEEB-11.5 AND MODULES IN PORTRAIT CONFIGURATION with 5/16" Hardware



### Important notes:

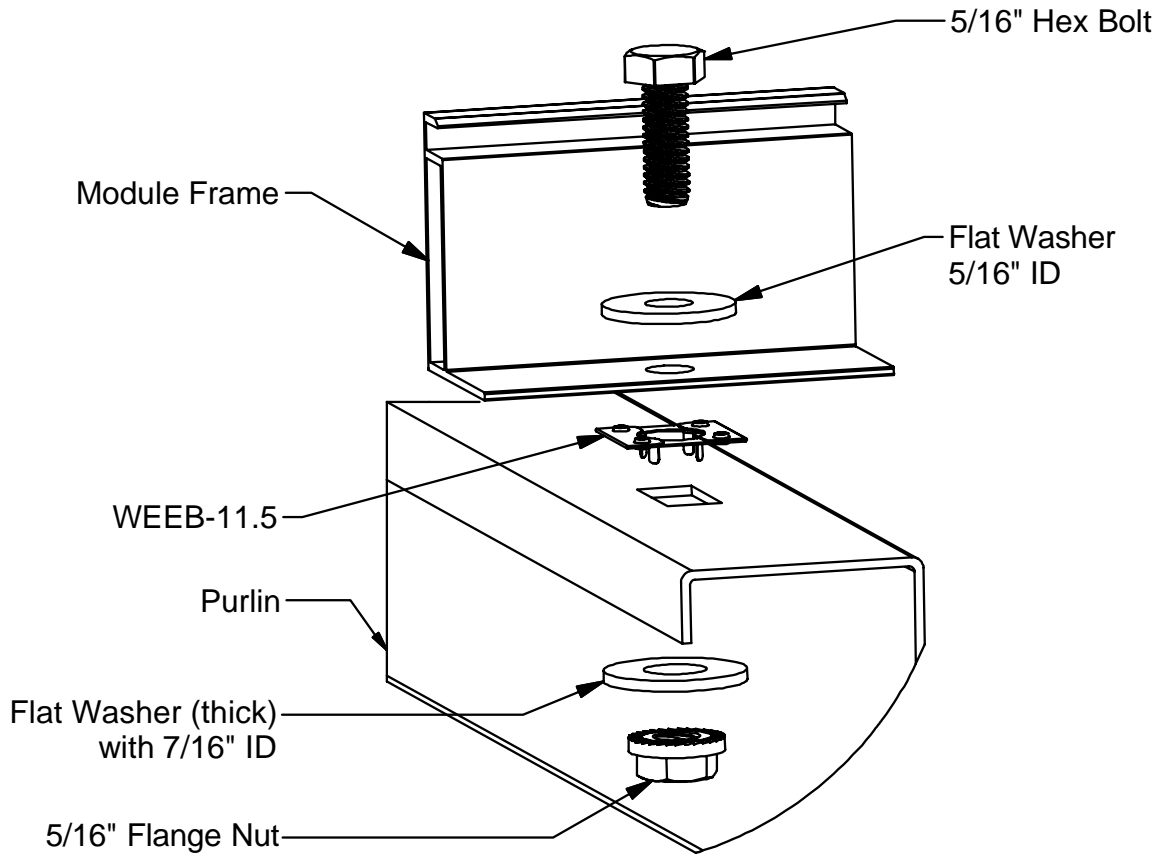
1. Anti-Seize or BURNDY PENETROX™ oxide inhibitor is not required on mounting hardware.
2. Secure PV cables and reliably route cables using Wiley ACC cable clips for proper wire management.
3. The NEC section 690.43 states “Exposed non-current carrying metal parts of module frames, equipment, and conductor enclosures shall be grounded in accordance with 250.134 or 250.136(A) regardless of voltage”.

# WEEB-11.5 ASSEMBLY

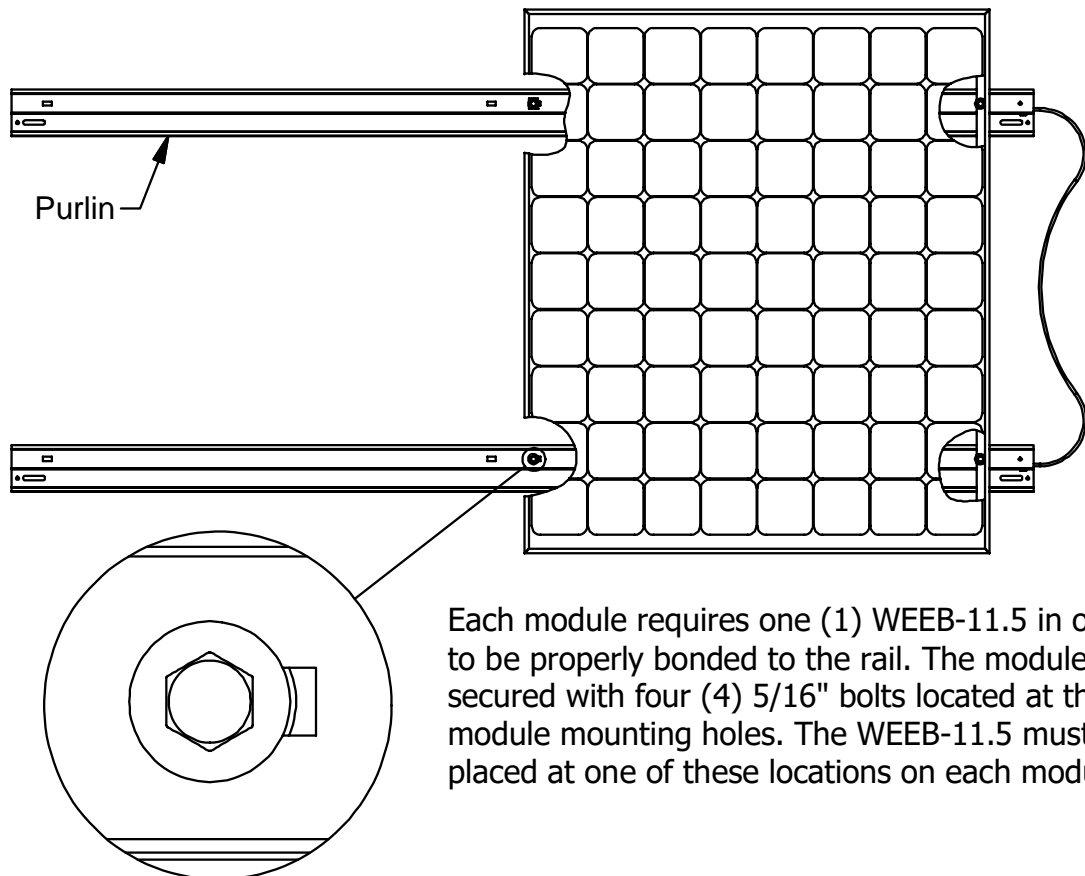
## MODULES IN PORTRAIT CONFIGURATION

### WITH 5/16" HARDWARE

1



2

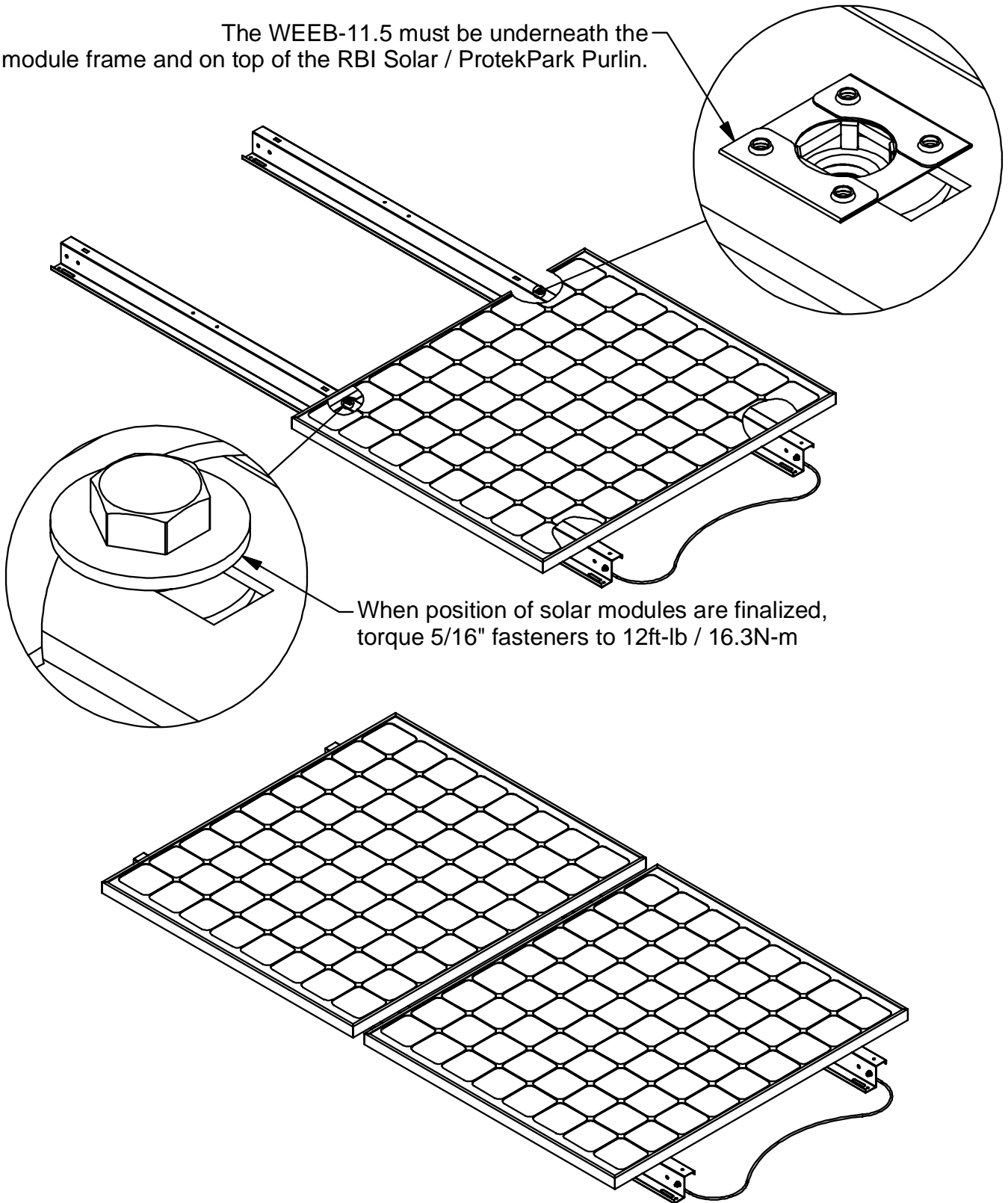


# WEEB-11.5 ASSEMBLY

## MODULES IN PORTRAIT CONFIGURATION

### WITH 5/16" HARDWARE

The WEEB-11.5 must be underneath the module frame and on top of the RBI Solar / ProtekPark Purlin.

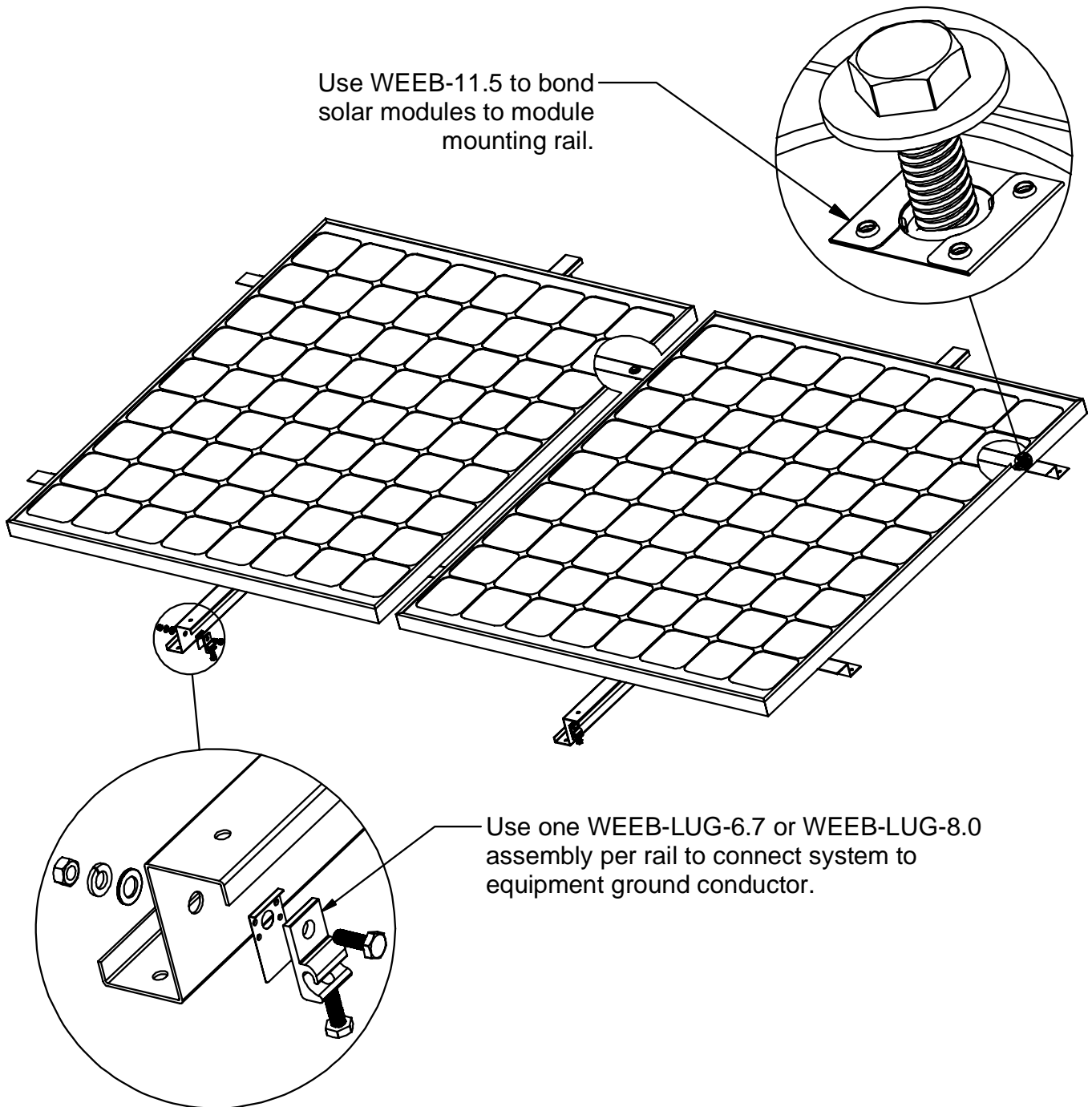


## Important note:

Do not torque fasteners down if position of solar modules is not finalized.  
Only slightly tighten fasteners to keep modules in place.

# SYSTEM OVERVIEW

## WEEB-11.5 AND MODULES IN LANDSCAPE CONFIGURATION WITH 5/16" HARDWARE



### Important notes:

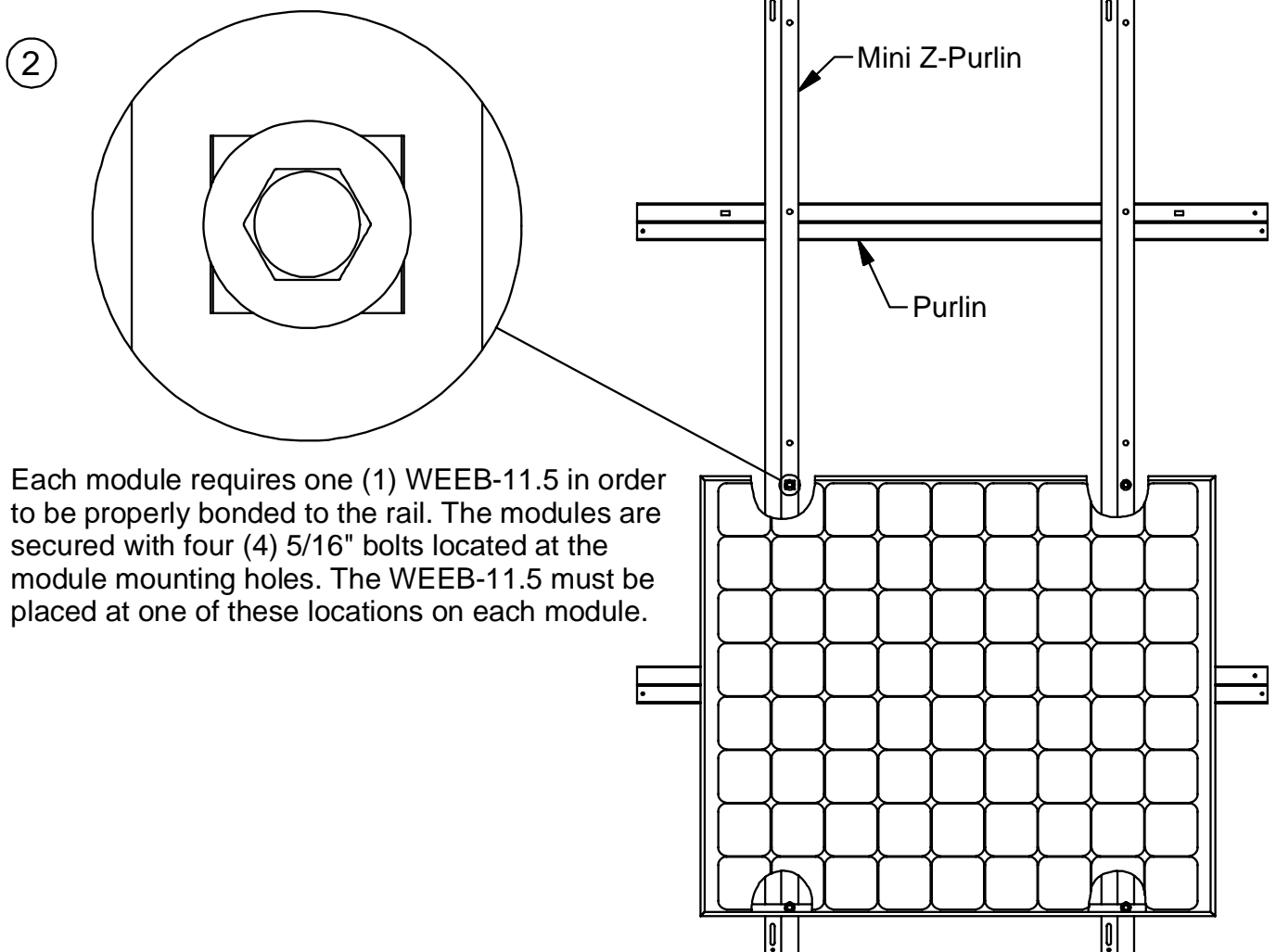
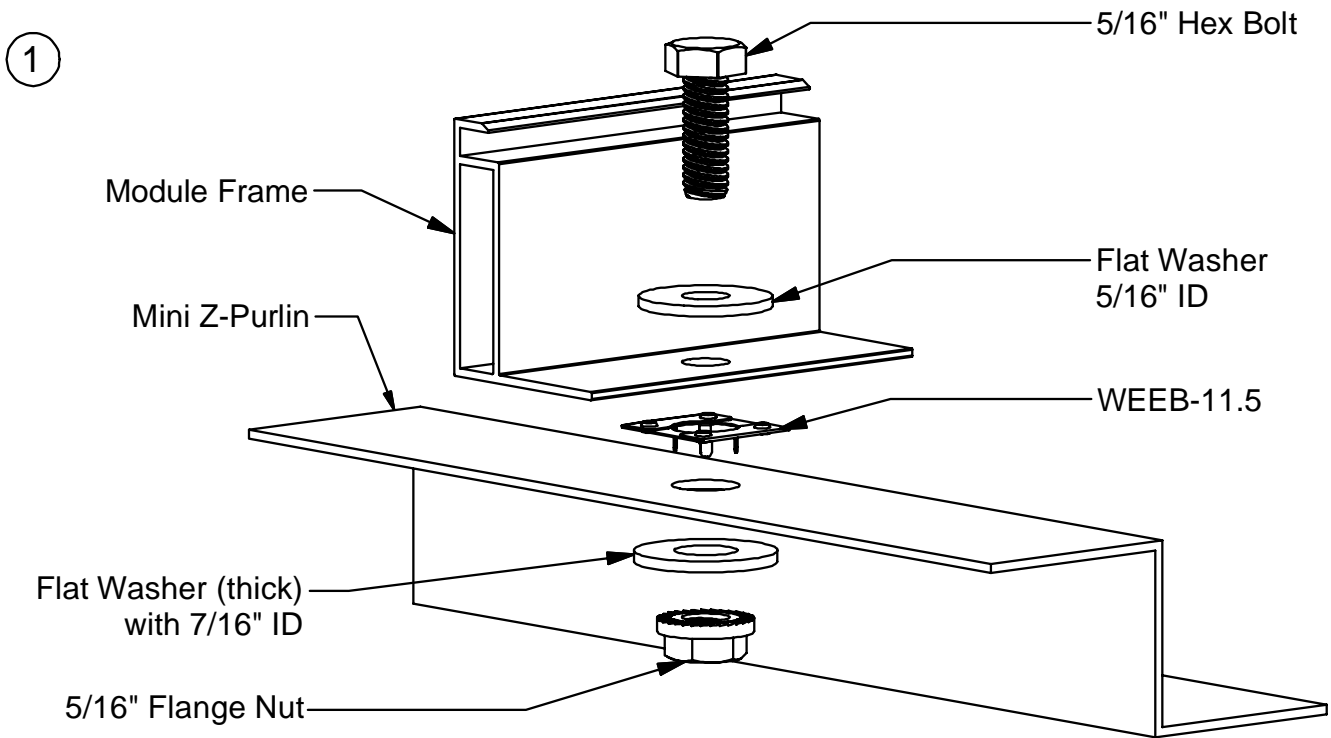
1. Anti-Seize or BURNDY PENETROX™ oxide inhibitor is not required on mounting hardware.
2. Secure PV cables and reliably route cables using Wiley ACC cable clips for proper wire management.
3. The NEC section 690.43 states “Exposed non-current carrying metal parts of module frames, equipment, and conductor enclosures shall be grounded in accordance with 250.134 or 250.136(A) regardless of voltage”.



# WEEB-11.5 ASSEMBLY

## MODULES IN LANDSCAPE CONFIGURATION

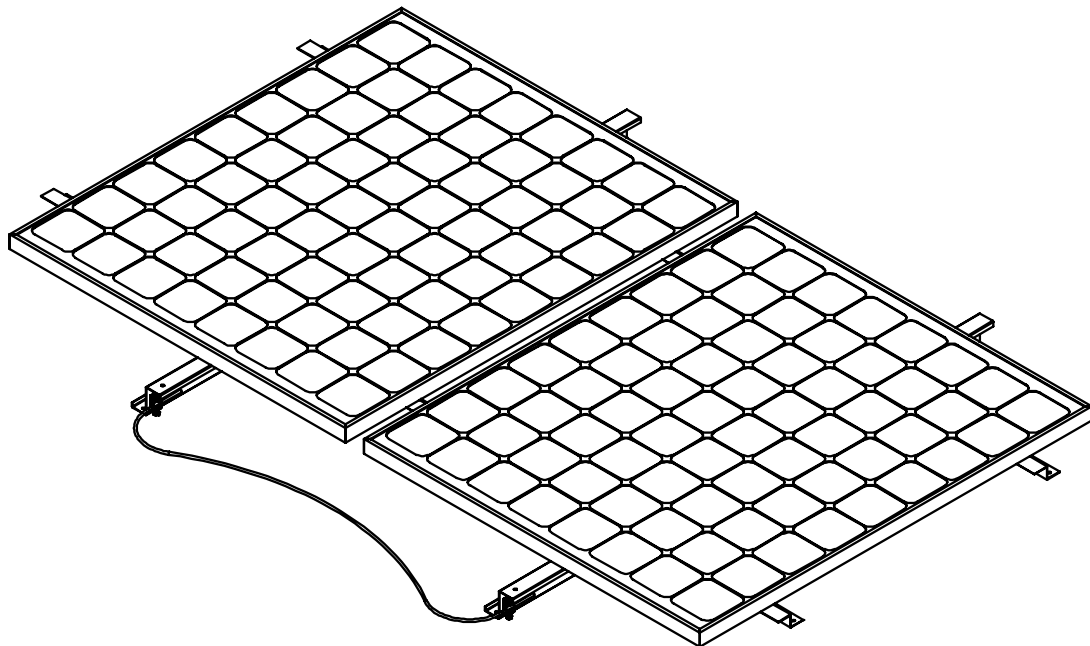
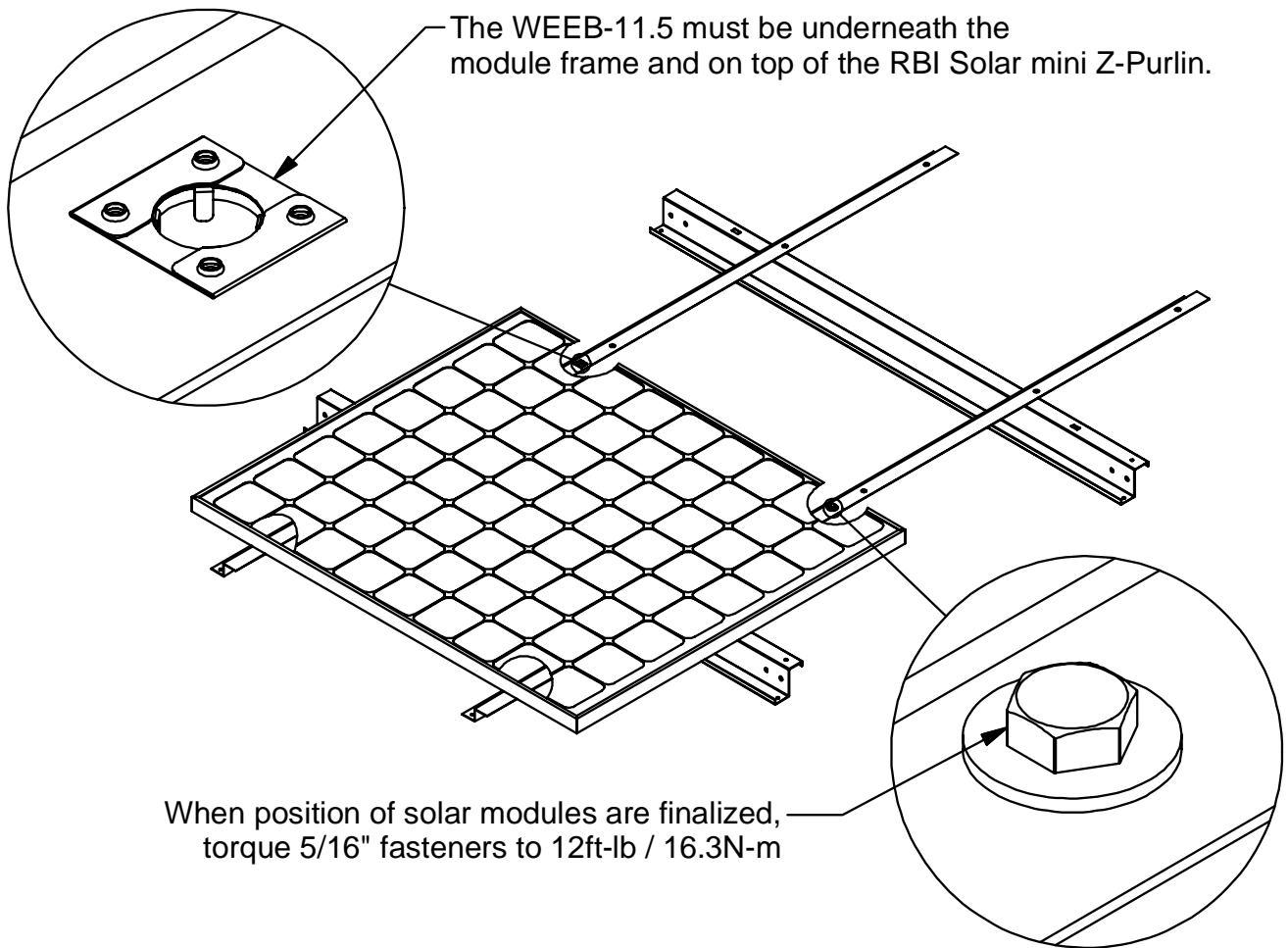
### WITH 5/16" HARDWARE



# WEEB-11.5 ASSEMBLY

## MODULES IN LANDSCAPE CONFIGURATION

### WITH 5/16" HARDWARE



## Important note:

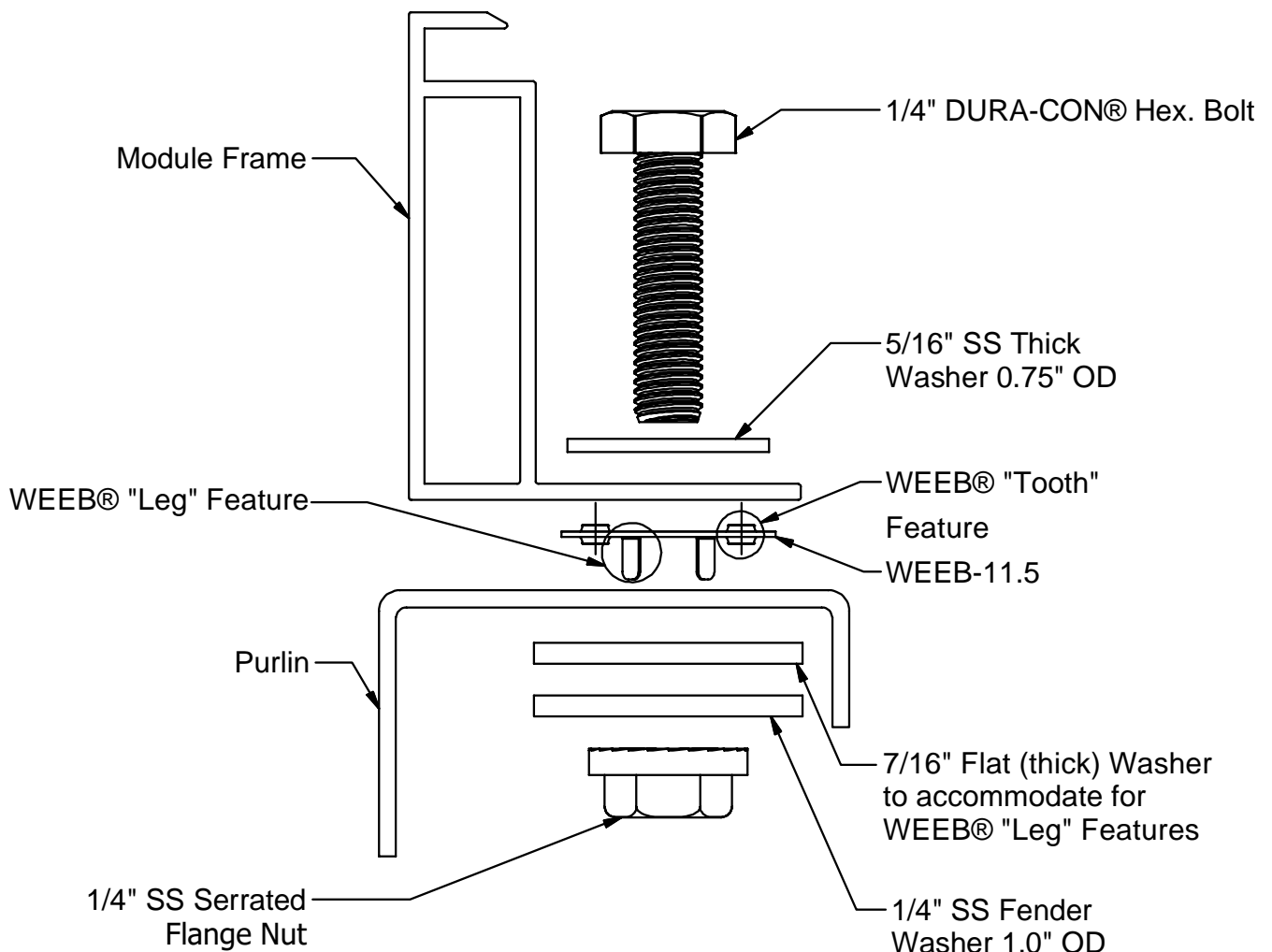
Do not torque fasteners down if position of solar modules is not finalized.  
Only slightly tighten fasteners to keep modules in place.

# WEEB-11.5 COMPATIBILITY

The WEEB® washer family of products can be used to bond anodized aluminum, galvanized steel, steel, and other electrically conductive metal structures. Metal racking components conforming to ASTM A653, A1046, and A792 standards have been evaluated and may be used in systems utilizing the WEEB® washer family of products. All installations shall be in accordance with NEC requirements in the USA and with CSA C22.1 in Canada. The WEEB® washers are for use with modules that have a maximum fuse rating of less than 25A.

## Bottom Mounting Modules requiring 1/4" Hardware

The WEEB® washers used for bonding the PV modules to the mounting rails are compatible with various cross-sections of module frames. The following is an example of a module frame that is compatible. Notice that the WEEB® washer teeth are positioned completely under the edge of the module frame.

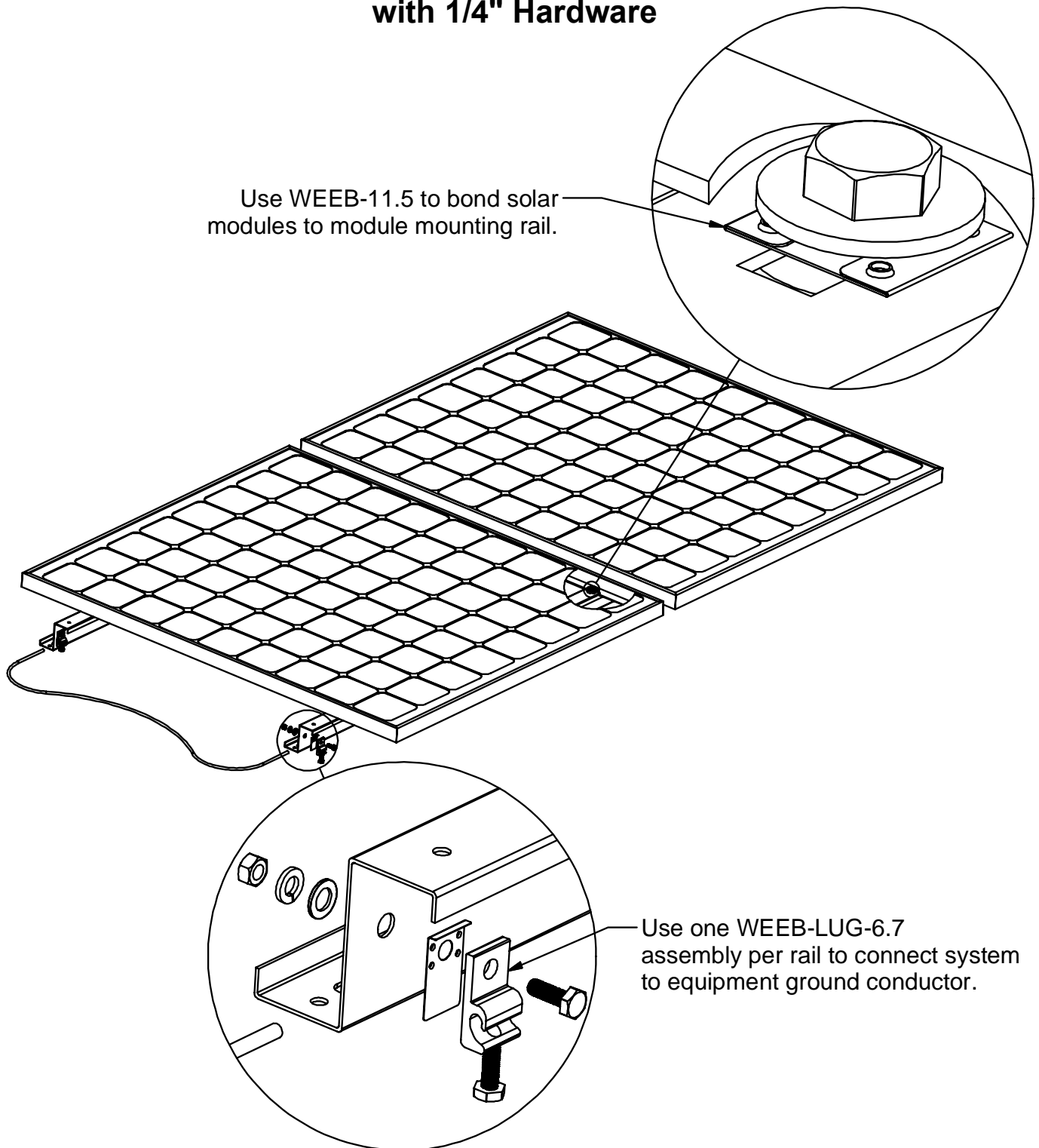


### Note:

**Inspect each module frame used with a WEEB® device to ensure that the bottom mounting face of the frame is flat, and that there are no hindrances to embedding WEEB® washer teeth. Do not use a module with a frame that prevents the WEEB® washer teeth from embedding fully.**

# SYSTEM OVERVIEW

## WEEB-11.5 AND MODULES IN PORTRAIT CONFIGURATION with 1/4" Hardware



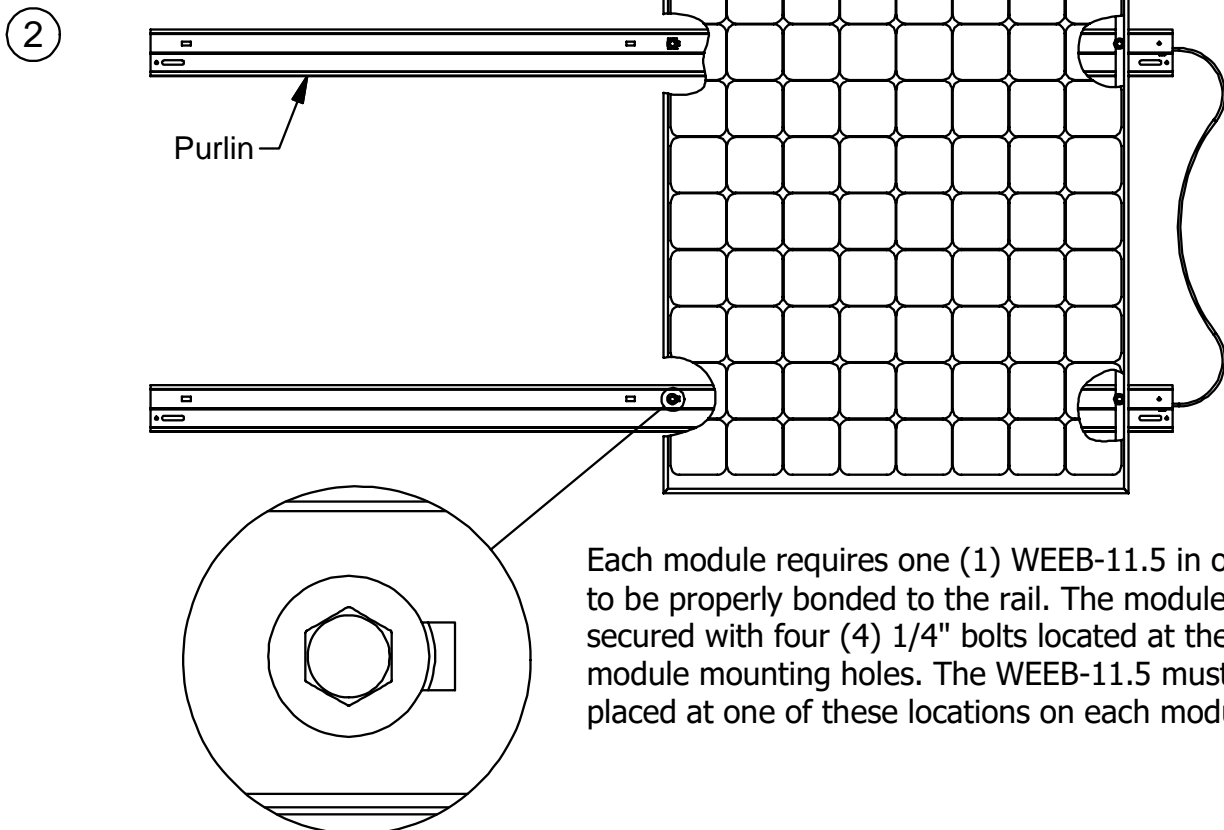
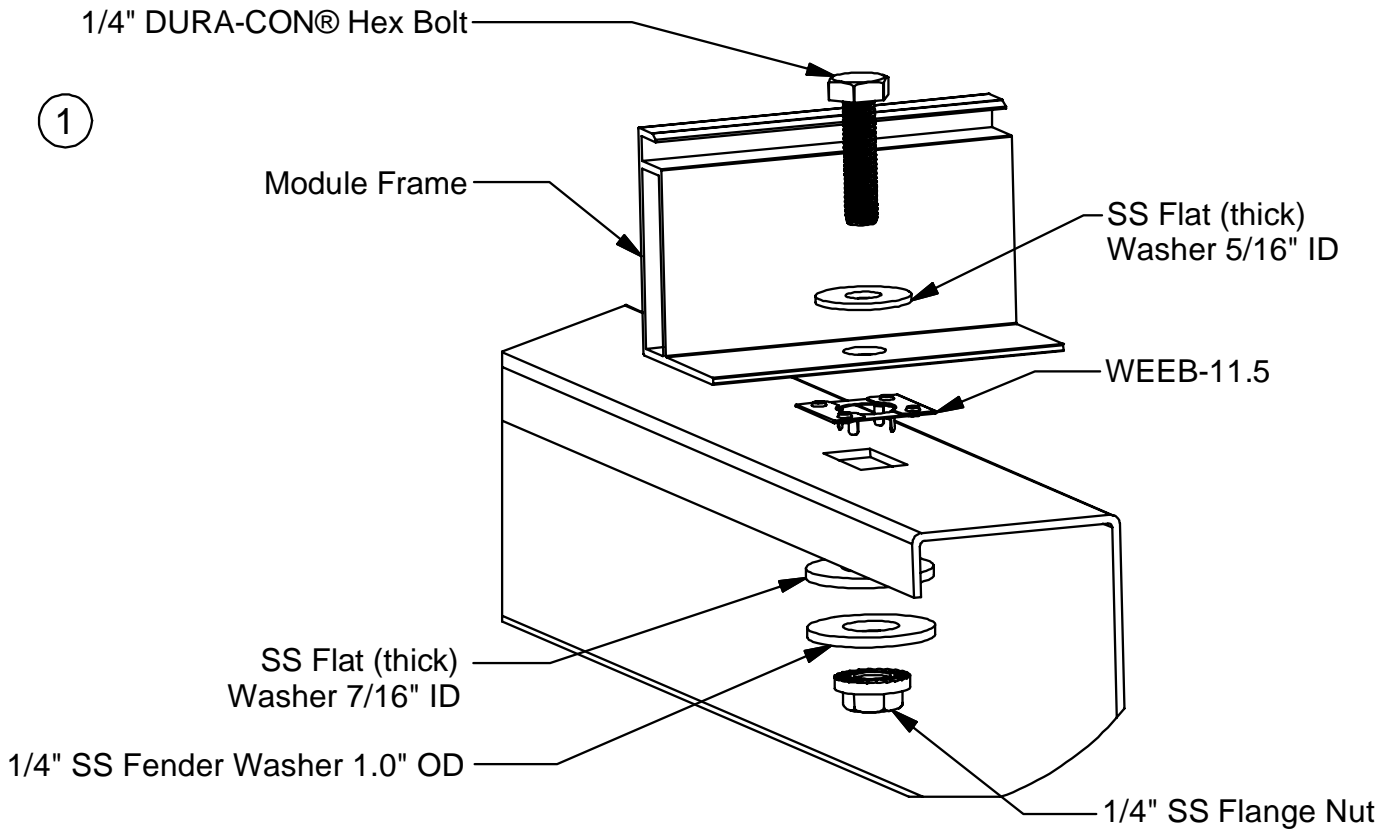
### Important notes:

1. Anti-Seize or BURNDY PENETROX™ oxide inhibitor is not required on mounting hardware.
2. Secure PV cables and reliably route cables using Wiley ACC cable clips for proper wire management.
3. The NEC section 690.43 states “Exposed non-current carrying metal parts of module frames, equipment, and conductor enclosures shall be grounded in accordance with 250.134 or 250.136(A) regardless of voltage”.

# WEEB-11.5 ASSEMBLY

## MODULES IN PORTRAIT CONFIGURATION

### WITH 1/4" HARDWARE

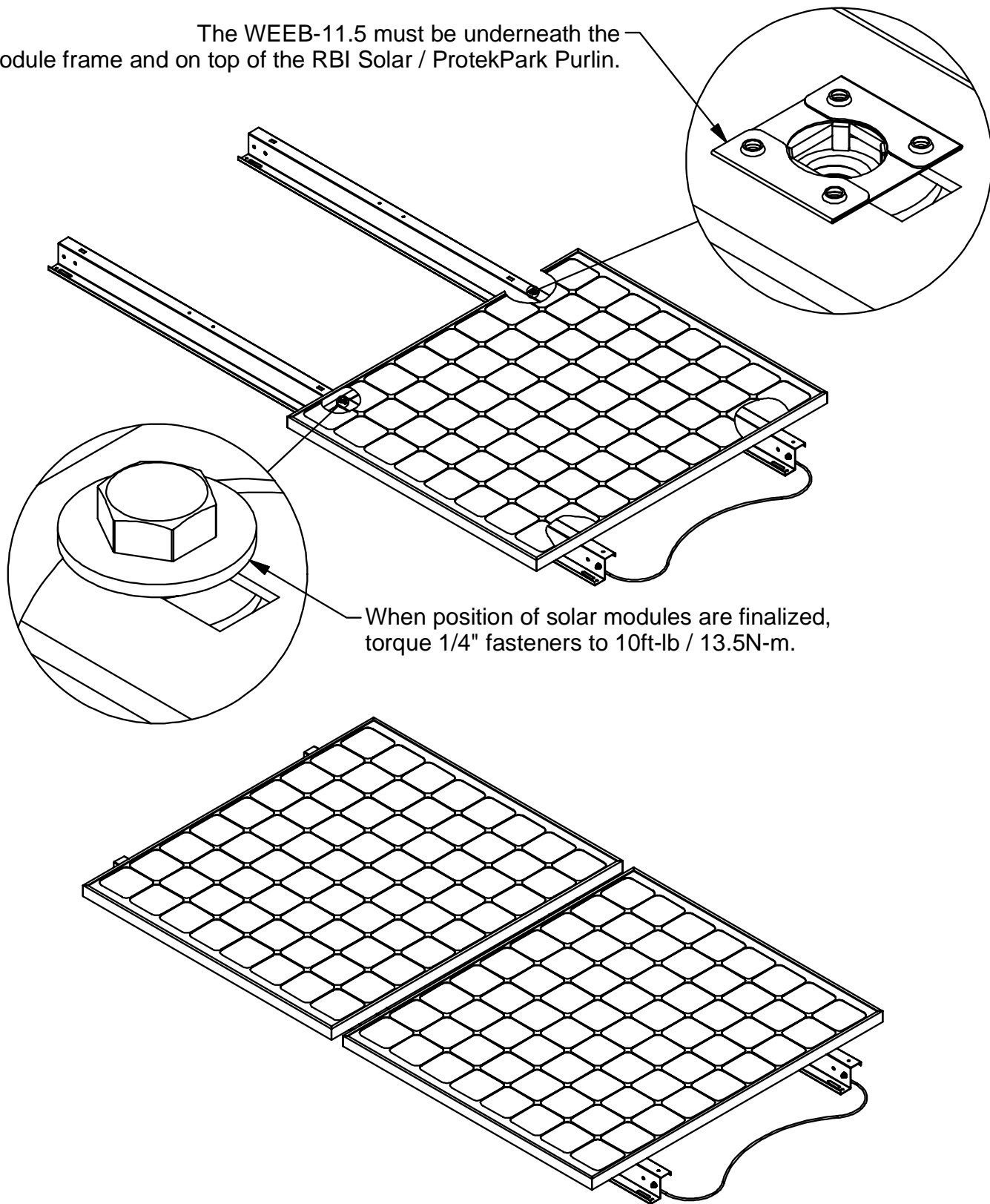


# WEEB-11.5 ASSEMBLY

## MODULES IN PORTRAIT CONFIGURATION

### WITH 1/4" HARDWARE

The WEEB-11.5 must be underneath the module frame and on top of the RBI Solar / ProtekPark Purlin.

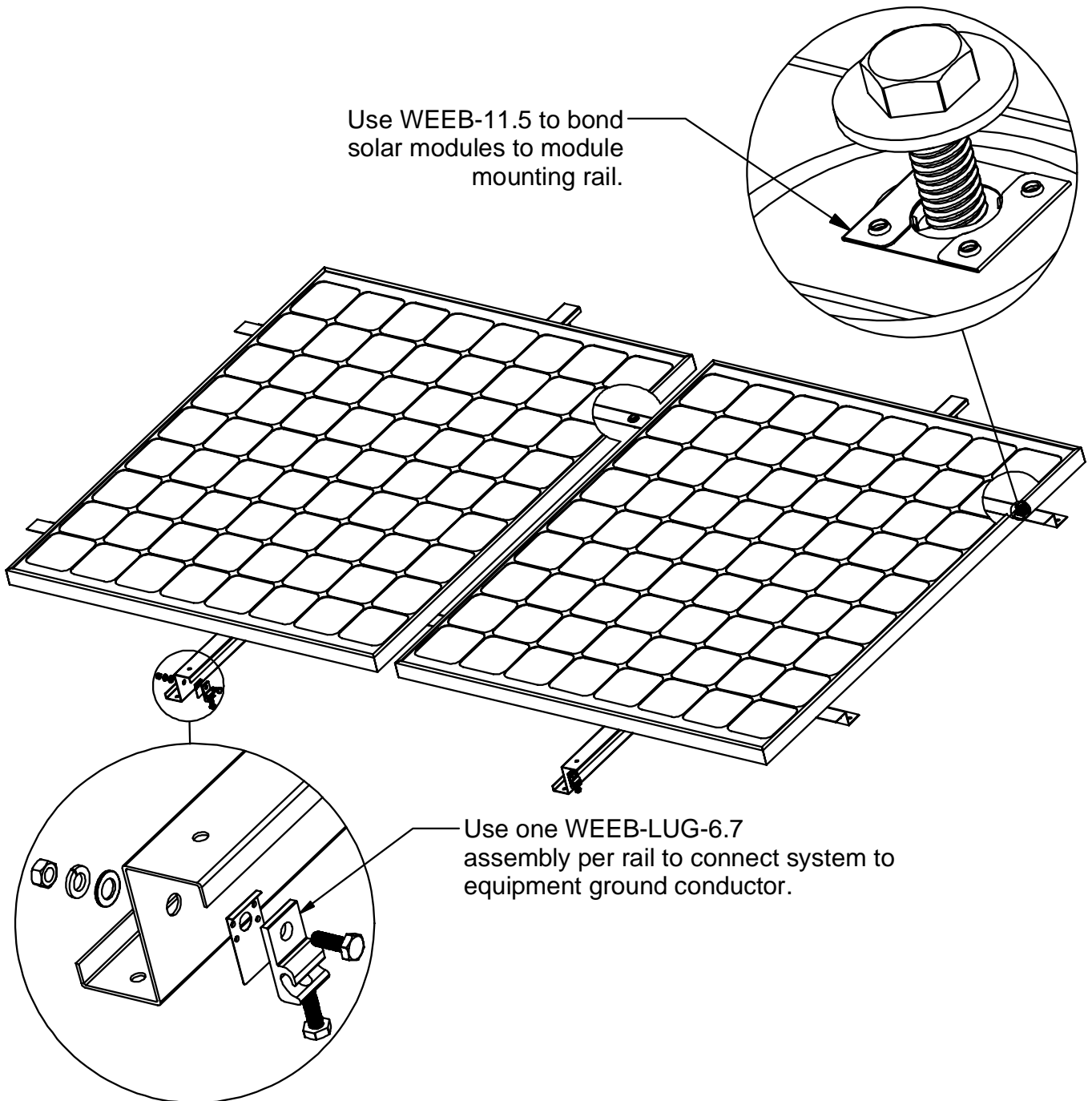


## Important note:

Do not torque fasteners down if position of solar modules is not finalized.  
Only slightly tighten fasteners to keep modules in place.

# SYSTEM OVERVIEW

## WEEB-11.5 AND MODULES IN LANDSCAPE CONFIGURATION with 1/4" Hardware

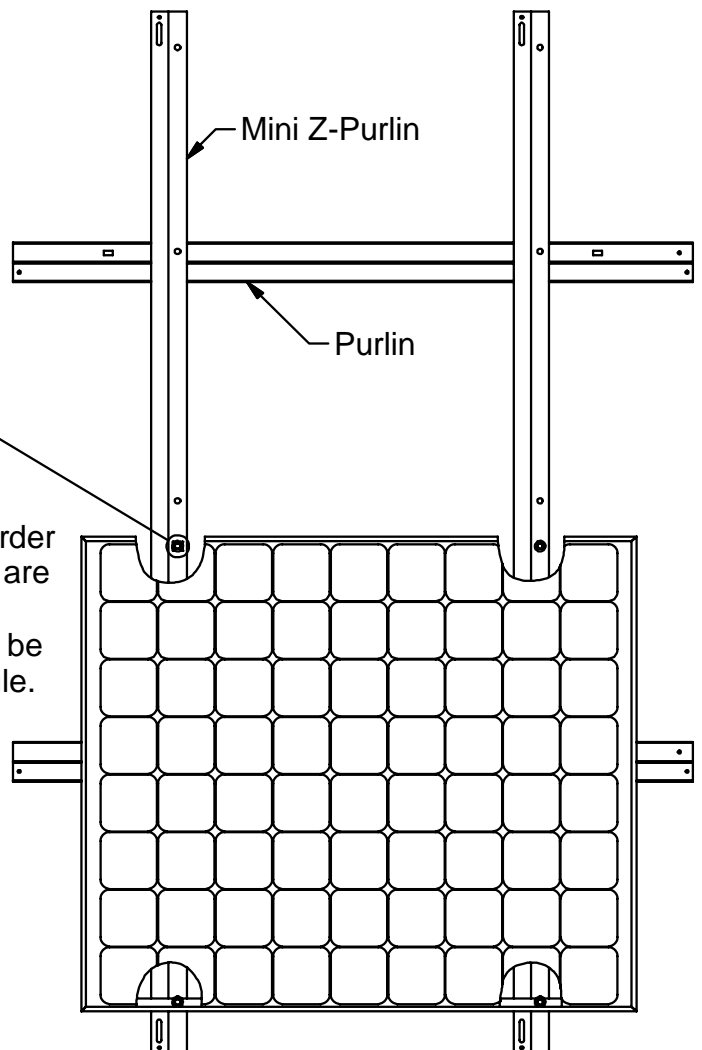
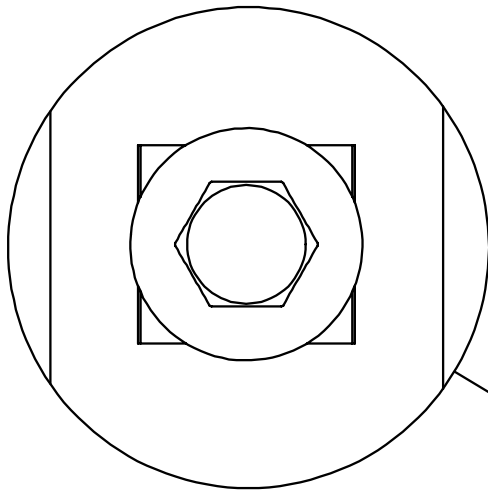
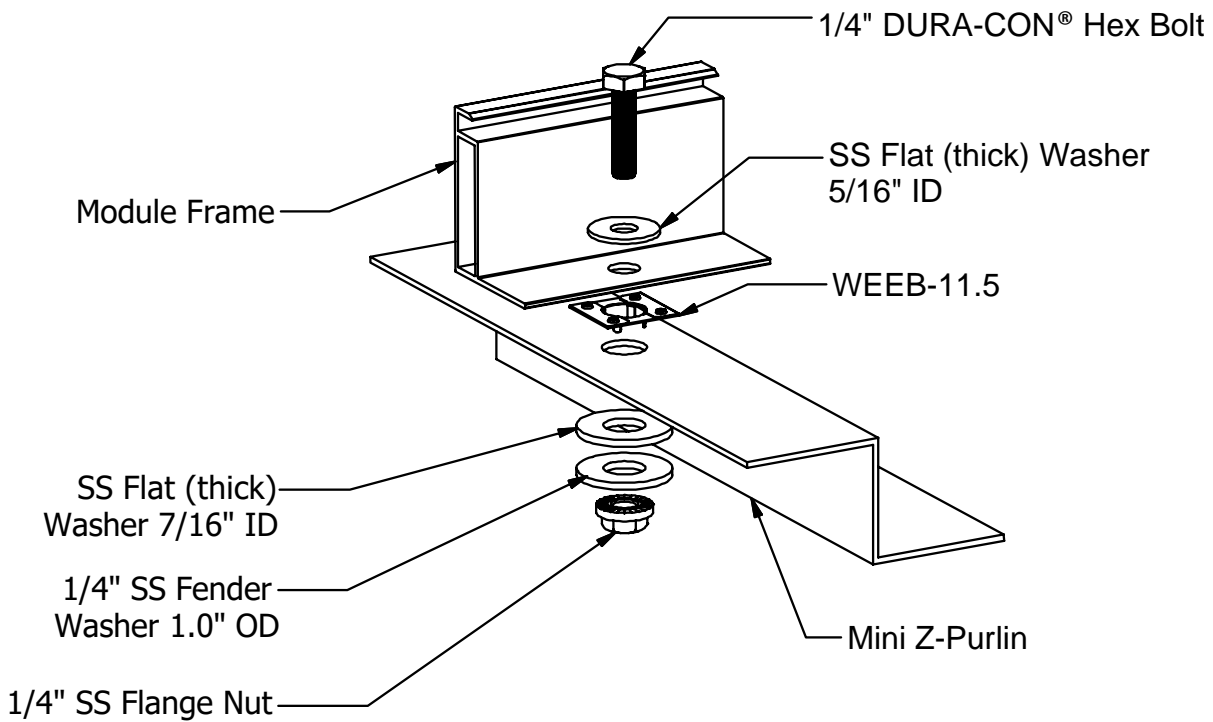


### Important notes:

1. Anti-Seize or BURNDY PENETROX™ oxide inhibitor is not required on mounting hardware.
2. Secure PV cables and reliably route cables using Wiley ACC cable clips for proper wire management.
3. The NEC section 690.43 states “Exposed non-current carrying metal parts of module frames, equipment, and conductor enclosures shall be grounded in accordance with 250.134 or 250.136(A) regardless of voltage”.

# WEEB-11.5 ASSEMBLY

## MODULES IN LANDSCAPE CONFIGURATION WITH 1/4" HARDWARE



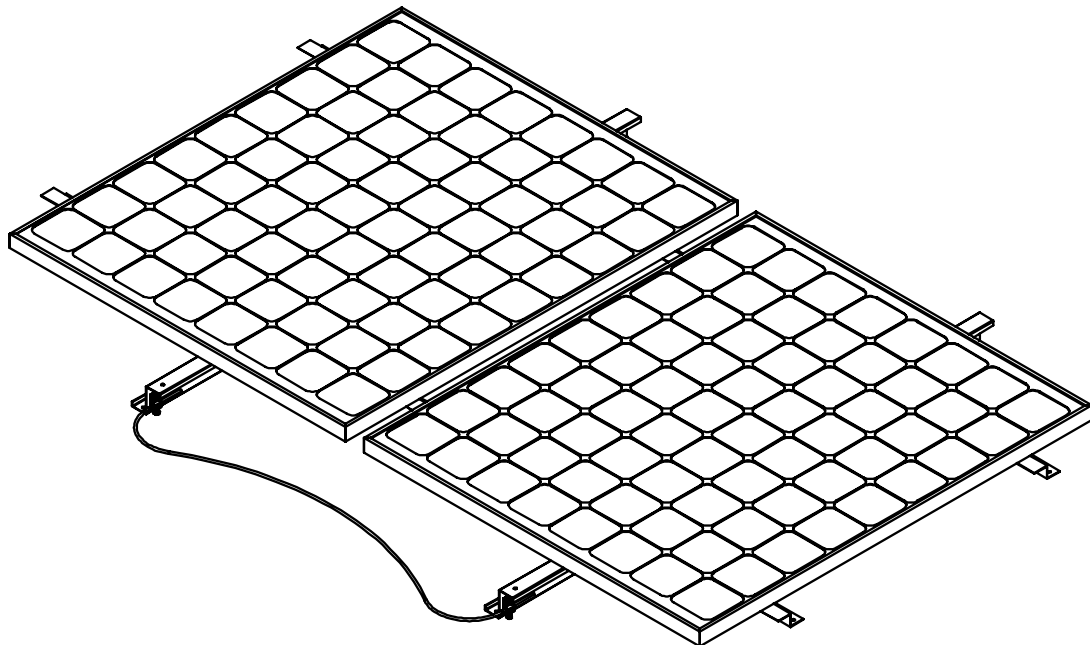
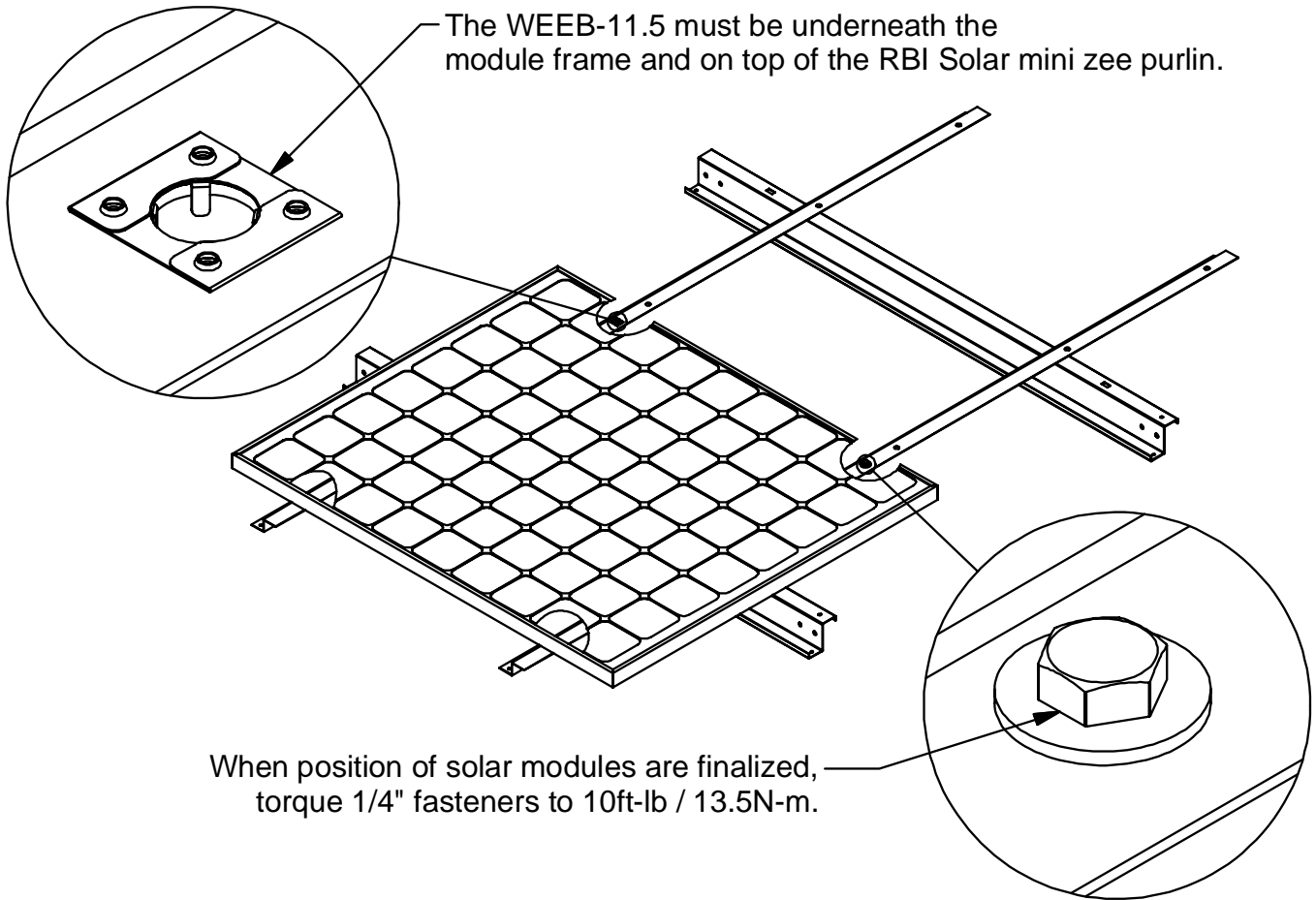
Each module requires one (1) WEEB-11.5 in order to be properly bonded to the rail. The modules are secured with four (4) 1/4" bolts located at the module mounting holes. The WEEB-11.5 must be placed at one of these locations on each module.



# WEEB-11.5 ASSEMBLY

## MODULES IN LANDSCAPE CONFIGURATION

### WITH 1/4" HARDWARE



## Important note:

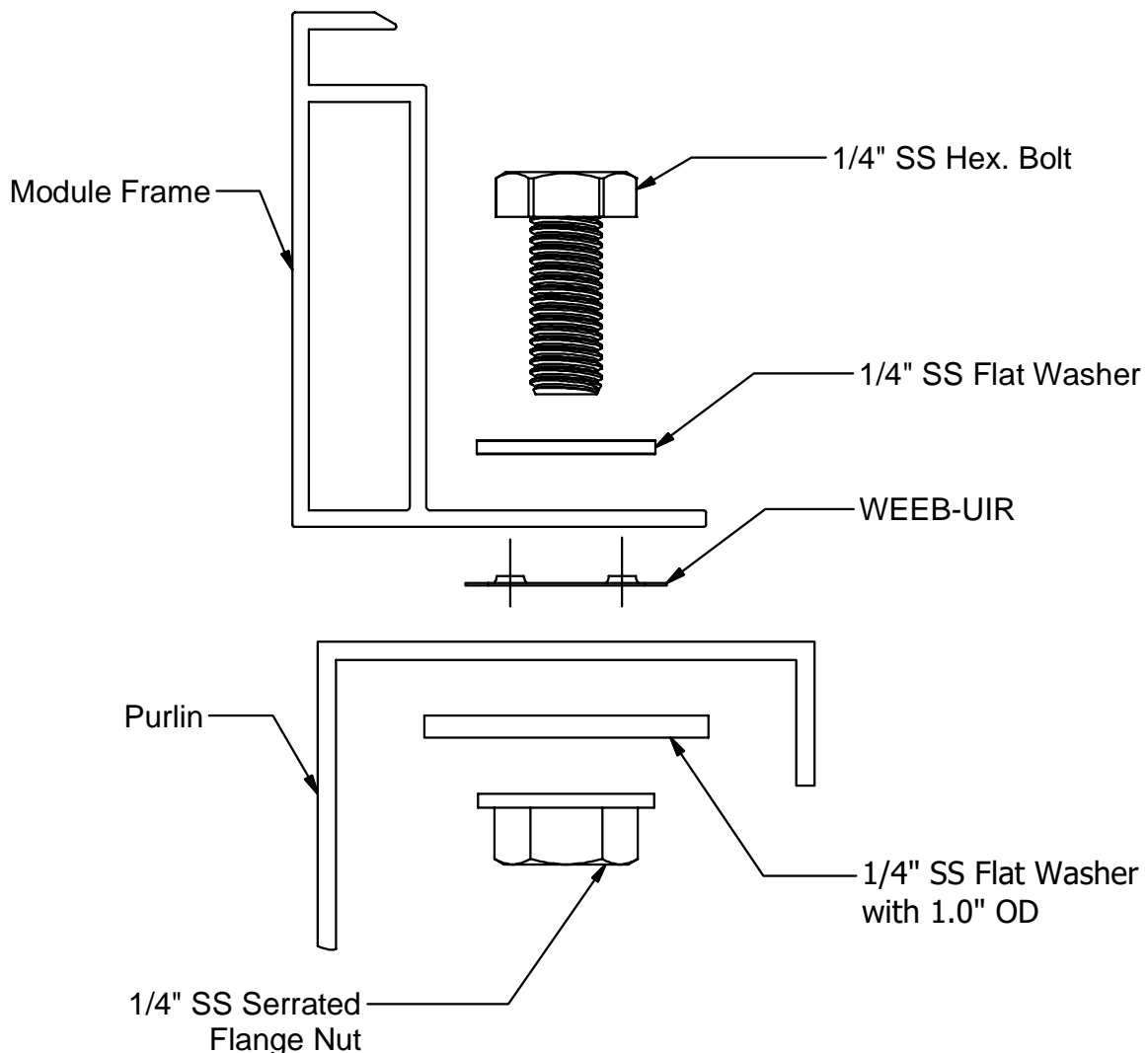
Do not torque fasteners down if position of solar modules is not finalized.  
Only slightly tighten fasteners to keep modules in place.

# WEEB-UIR COMPATIBILITY

The WEEB® washer family of products can be used to bond anodized aluminum, galvanized steel, steel, and other electrically conductive metal structures. Metal racking components conforming to ASTM A653, A1046, and A792 standards have been evaluated and may be used in systems utilizing the WEEB® washer family of products. All installations shall be in accordance with NEC requirements in the USA and with CSA C22.1 in Canada. The WEEB® washers are for use with modules that have a maximum fuse rating of less than 25A.

## Bottom Mounting Modules requiring 1/4" Hardware

The WEEB® washers used for bonding the PV modules to the mounting rails are compatible with various cross-sections of module frames. The following is an example of a module frame that is compatible. Notice that the WEEB® washer teeth are positioned completely under the edge of the module frame.

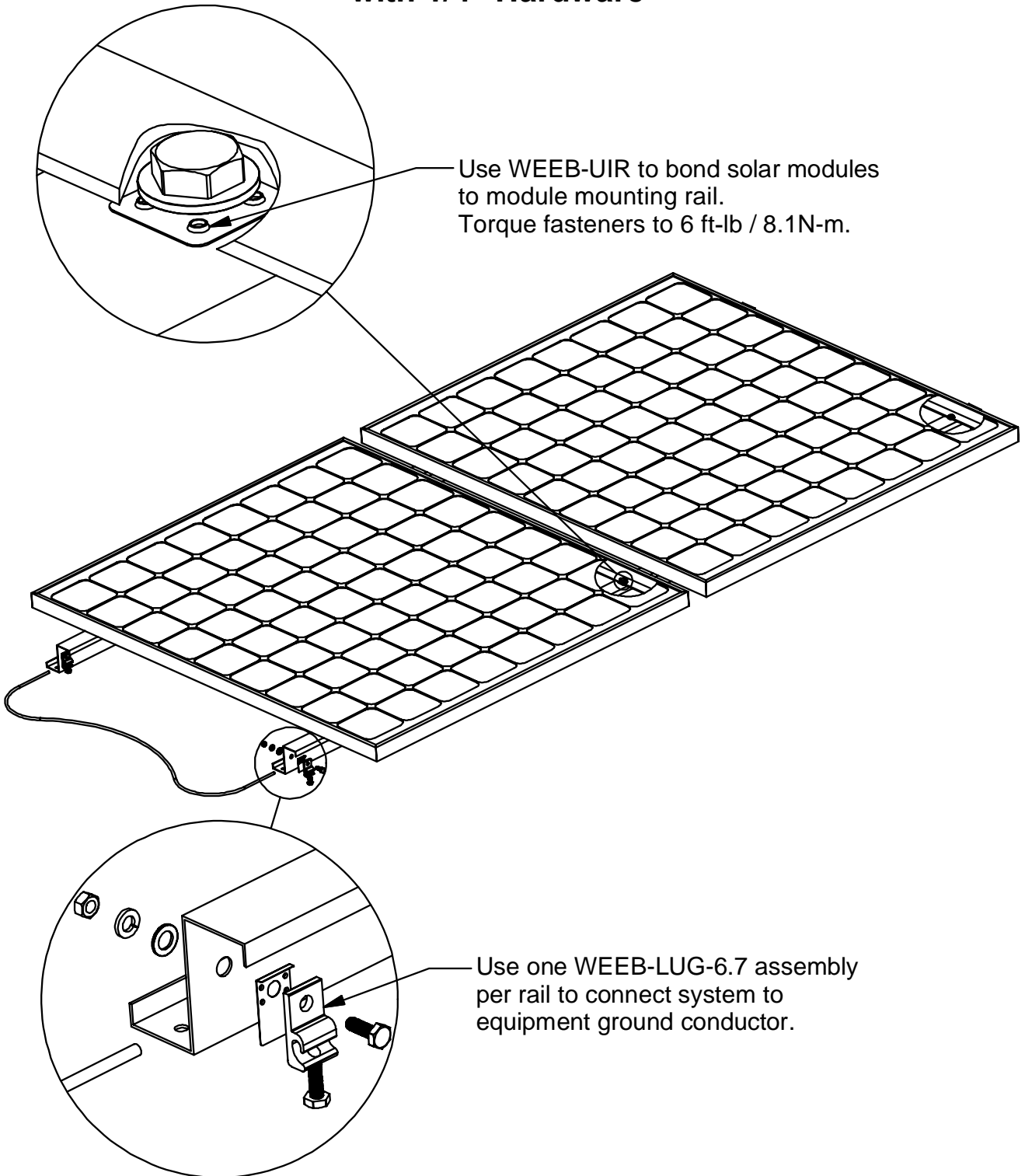


### Note:

**Inspect each module frame used with a WEEB® device to ensure that the bottom mounting face of the frame is flat, and that there are no hindrances to embedding WEEB® washer teeth. Do not use a module with a frame that prevents the WEEB® washer teeth from embedding fully.**

# SYSTEM OVERVIEW

## WEEB-UIR AND MODULES IN PORTRAIT CONFIGURATION with 1/4" Hardware



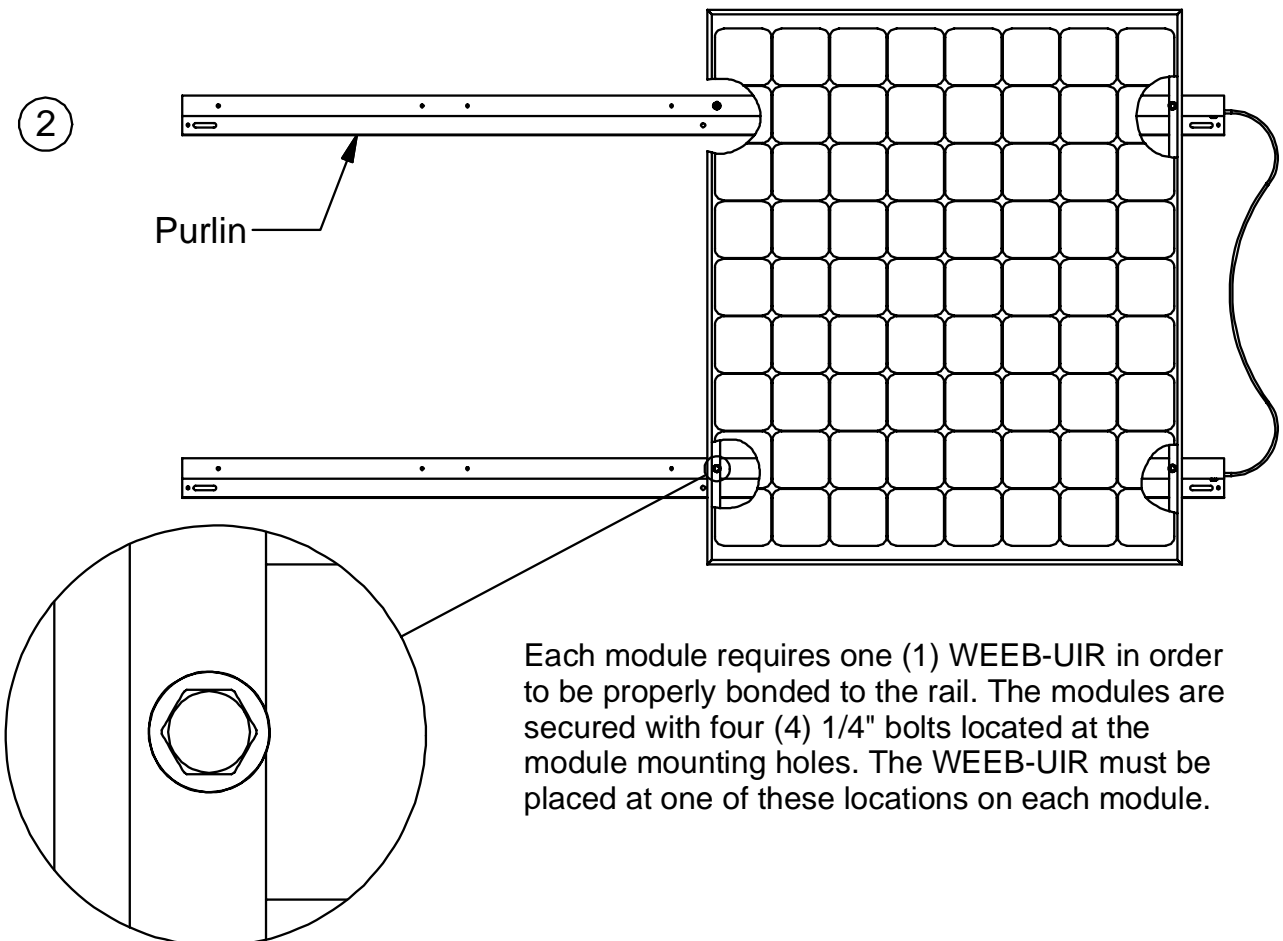
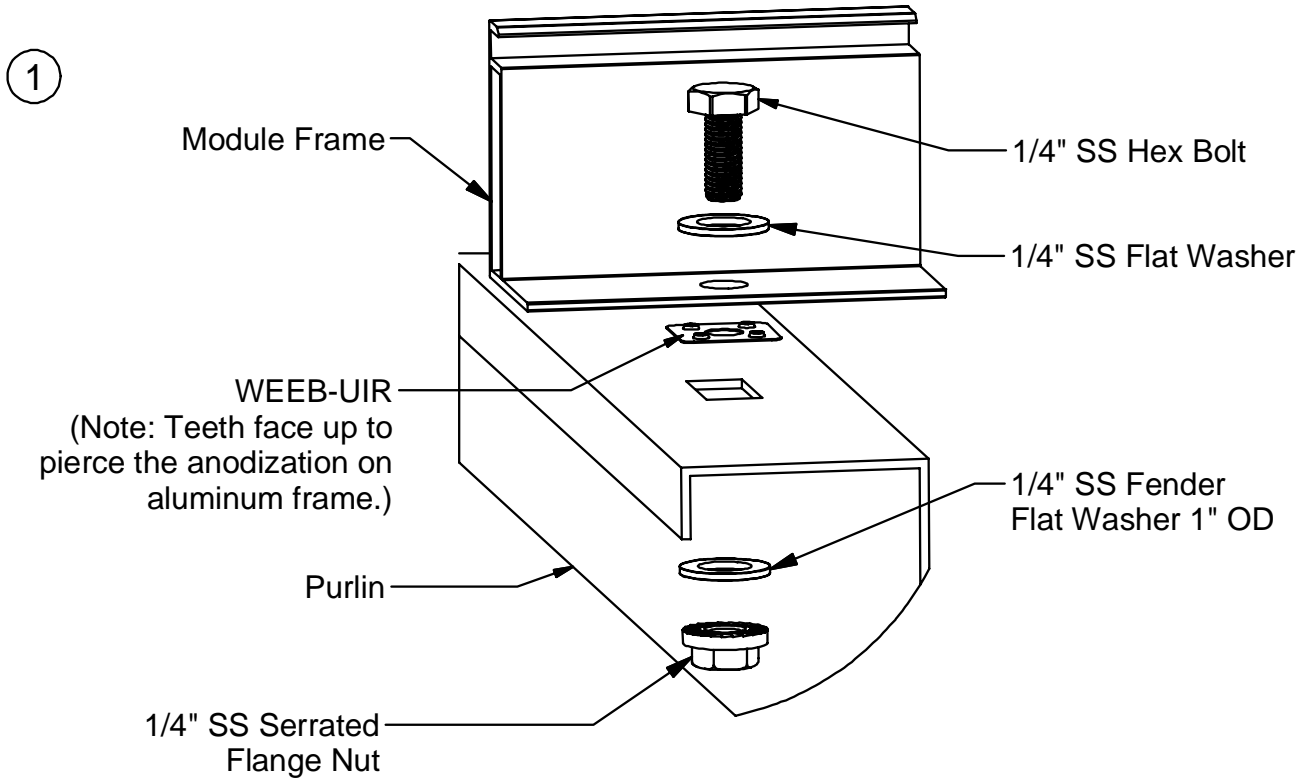
### Important notes:

1. Anti-Seize or BURNDY PENETROX™ oxide inhibitor is not required on mounting hardware.
2. Secure PV cables and reliably route cables using Wiley ACC cable clips for proper wire management.
3. The NEC section 690.43 states “Exposed non-current carrying metal parts of module frames, equipment, and conductor enclosures shall be grounded in accordance with 250.134 or 250.136(A) regardless of voltage”.

# WEEB-UIR ASSEMBLY

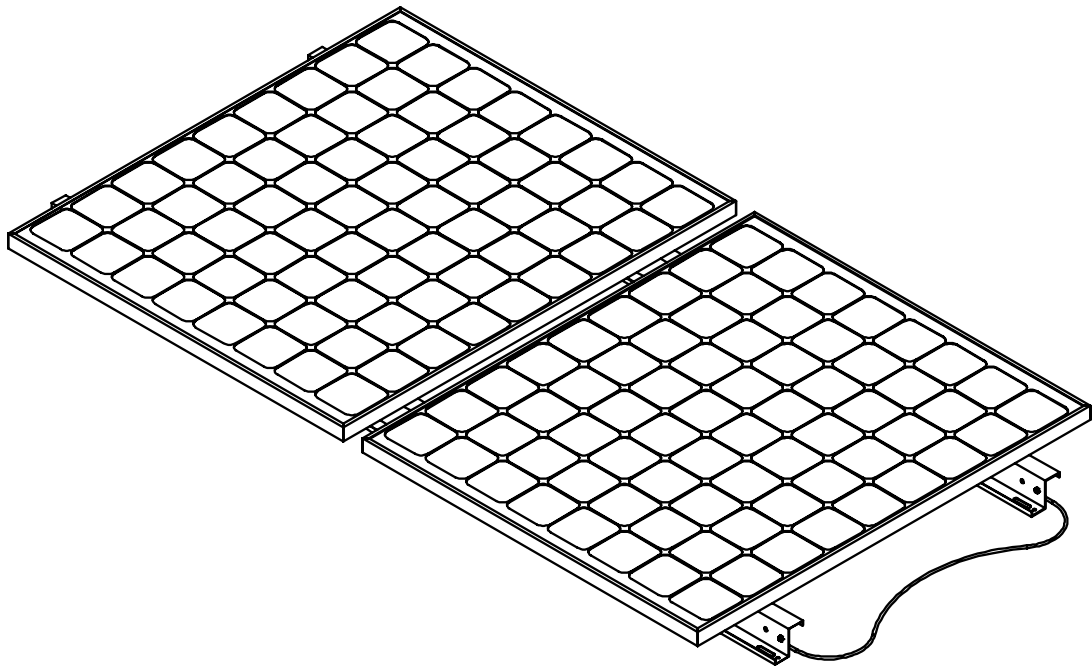
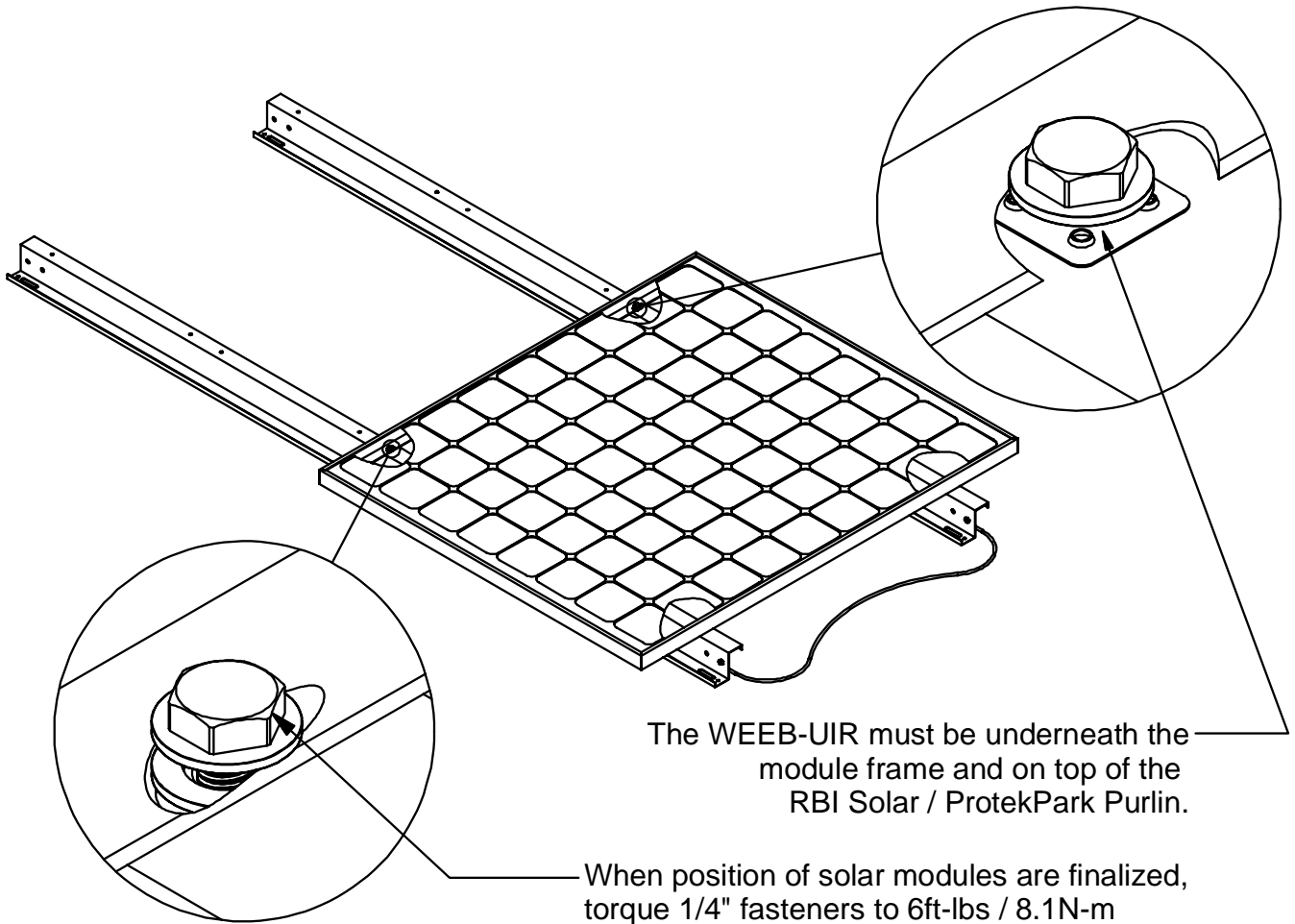
## MODULES IN PORTRAIT CONFIGURATION

### WITH 1/4" HARDWARE



# WEEB-UIR ASSEMBLY

## MODULES IN PORTRAIT CONFIGURATION

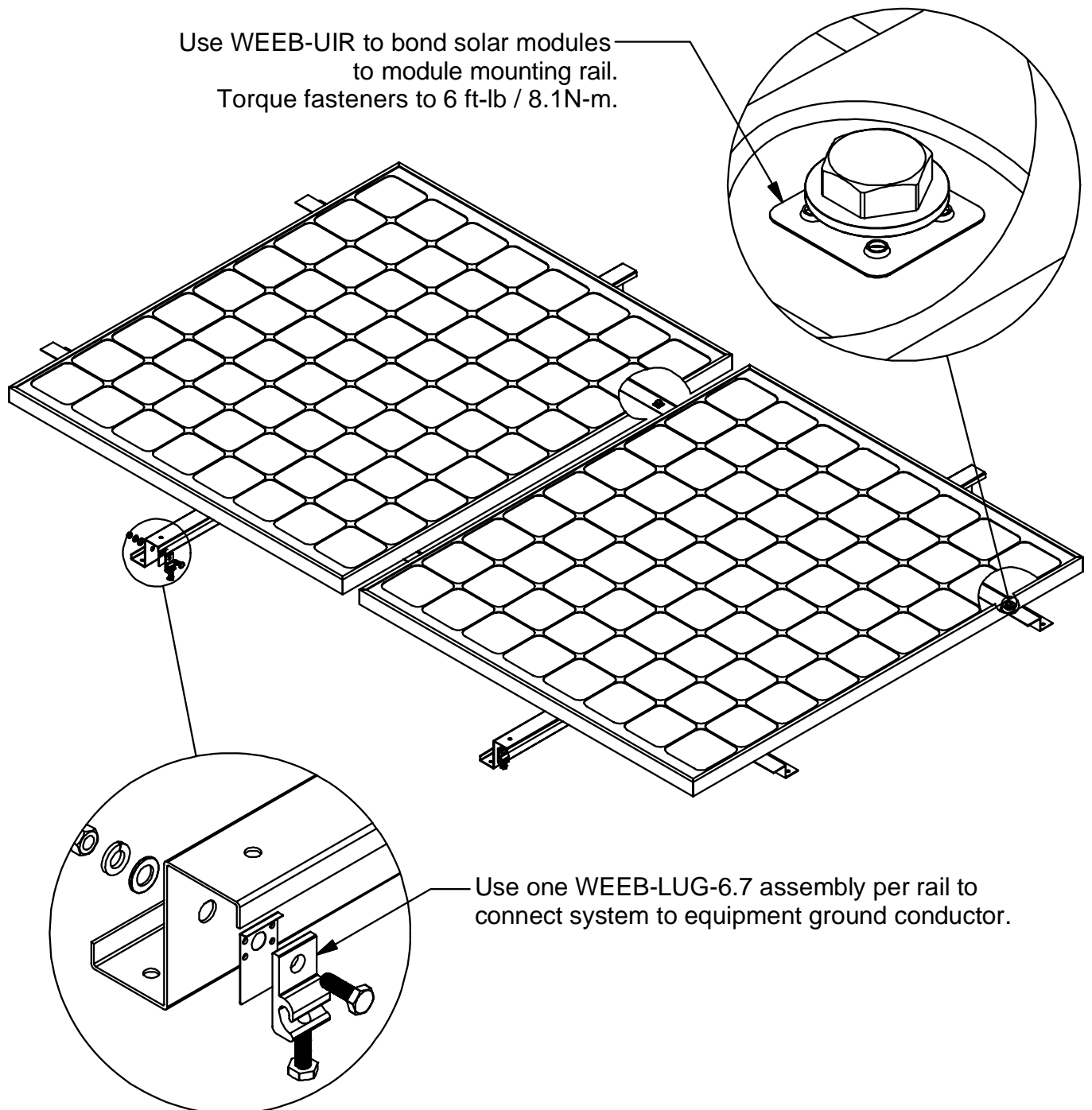


### Important note:

Do not torque fasteners down if position of solar modules is not finalized.  
Only slightly tighten fasteners to keep modules in place.

# SYSTEM OVERVIEW

## WEEB-UIR AND MODULES IN LANDSCAPE CONFIGURATION with 1/4" Hardware

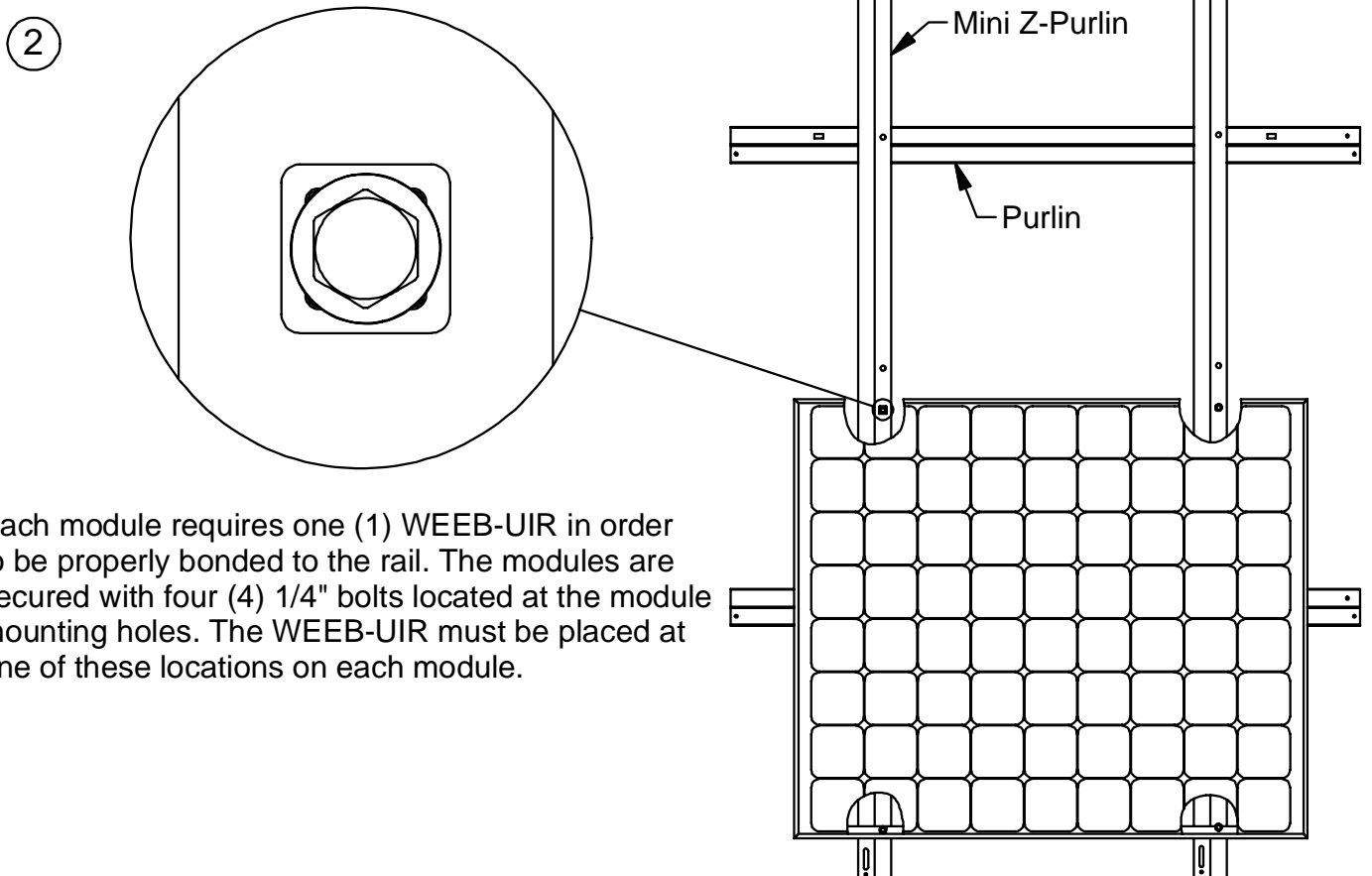
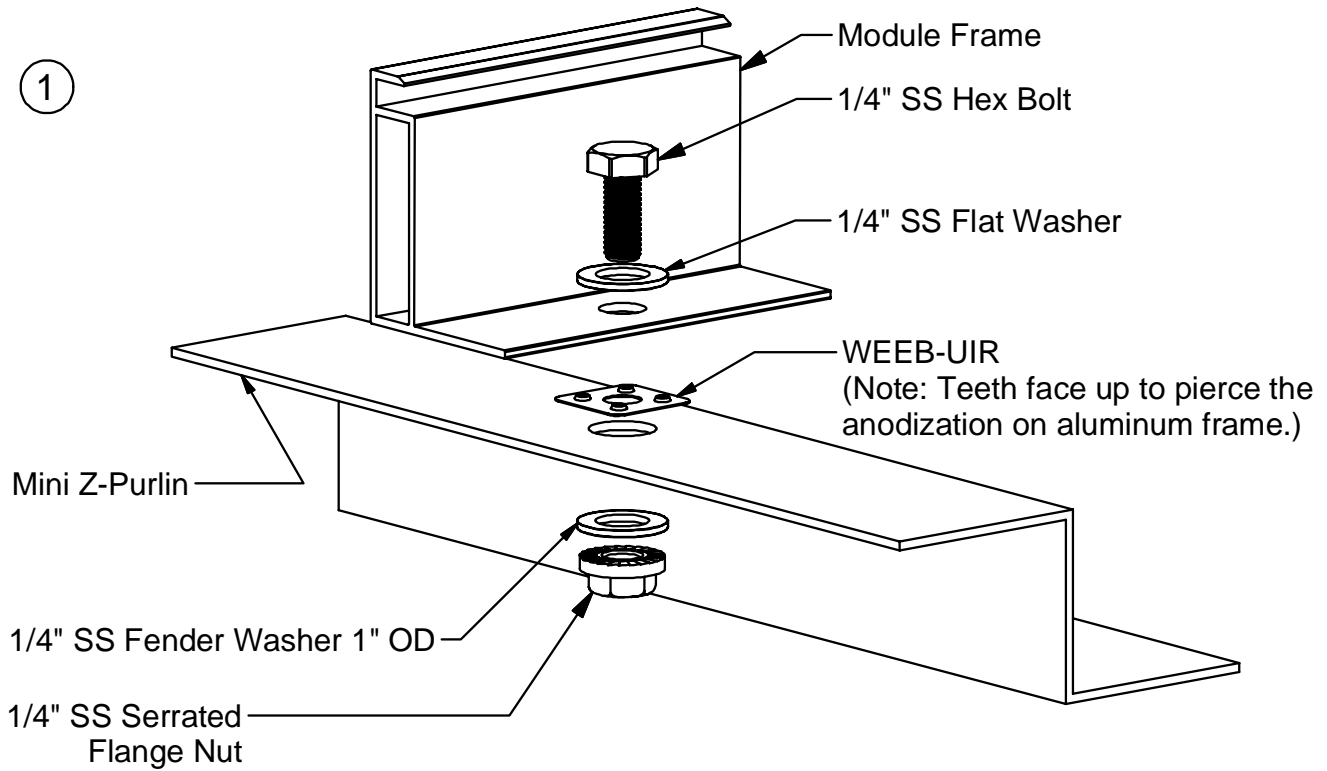


### Important notes:

1. Anti-Seize or BURNDY PENETROX™ oxide inhibitor is not required on mounting hardware.
2. Secure PV cables and reliably route cables using Wiley ACC cable clips for proper wire management.
3. The NEC section 690.43 states “Exposed non-current carrying metal parts of module frames, equipment, and conductor enclosures shall be grounded in accordance with 250.134 or 250.136(A) regardless of voltage”.

# WEEB-UIR ASSEMBLY

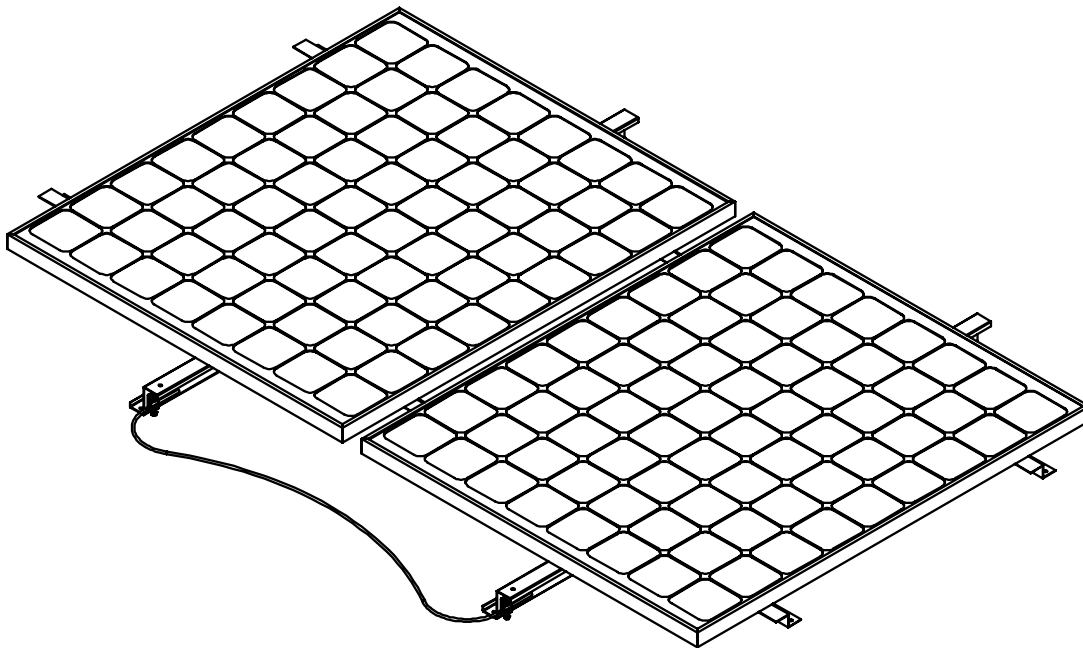
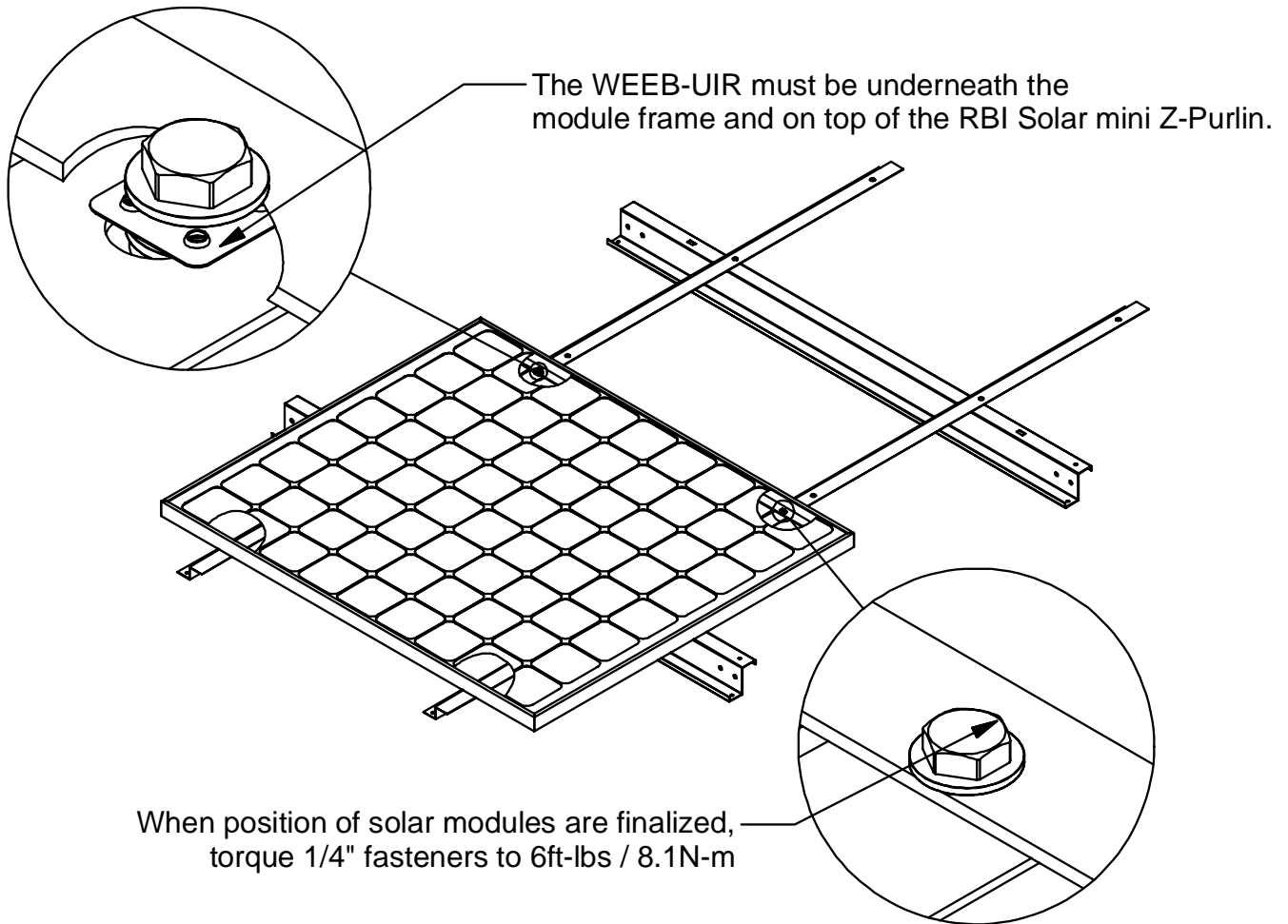
## MODULES IN LANDSCAPE CONFIGURATION WITH 1/4" HARDWARE



Each module requires one (1) WEIB-UIR in order to be properly bonded to the rail. The modules are secured with four (4) 1/4" bolts located at the module mounting holes. The WEIB-UIR must be placed at one of these locations on each module.

# WEEB-UIR ASSEMBLY

## MODULES IN LANDSCAPE CONFIGURATION



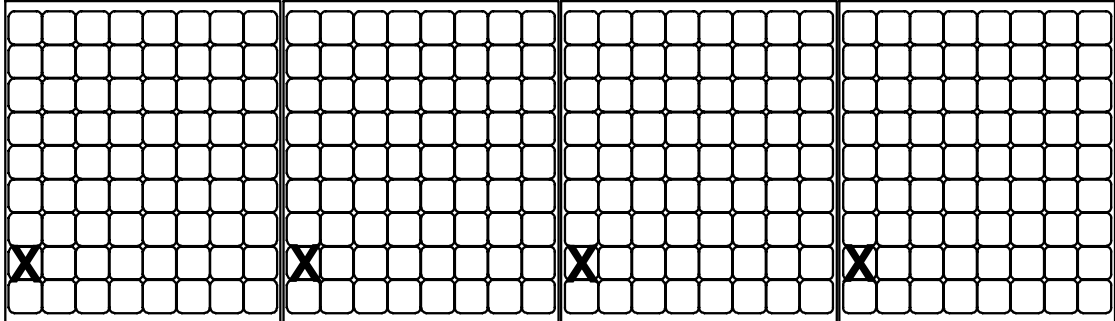
### Important note:

Do not torque fasteners down if position of solar modules is not finalized.  
Only slightly tighten fasteners to keep modules in place.



# WEEB<sup>®</sup> WASHER LAYOUT

## EVEN NUMBER OF MODULES IN ROW

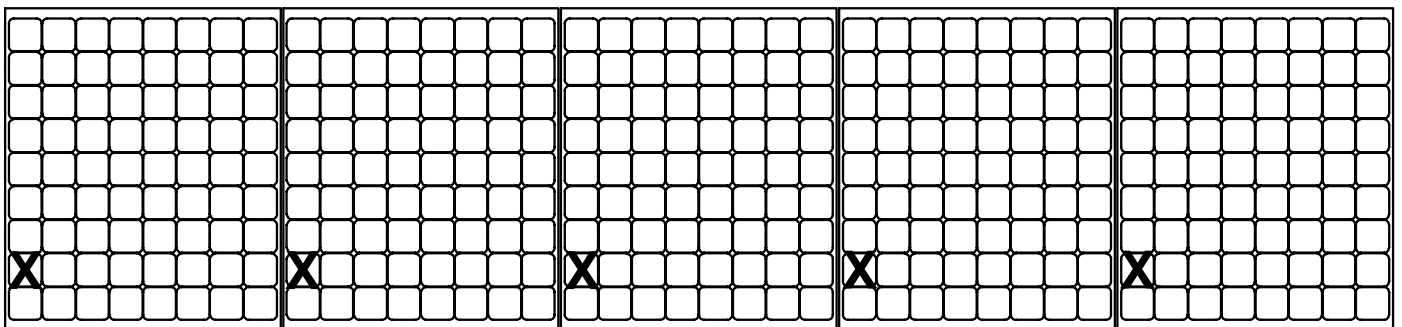


X DENOTES PLACES TO INSTALL WEEB-11.5 OR WEEB-UIR

COLUMN X ROW = C X R = 4 X 1 = 4

WEEB-11.5 OR WEEB-UIR NEEDED = 4

## ODD NUMBER OF MODULES IN ROW



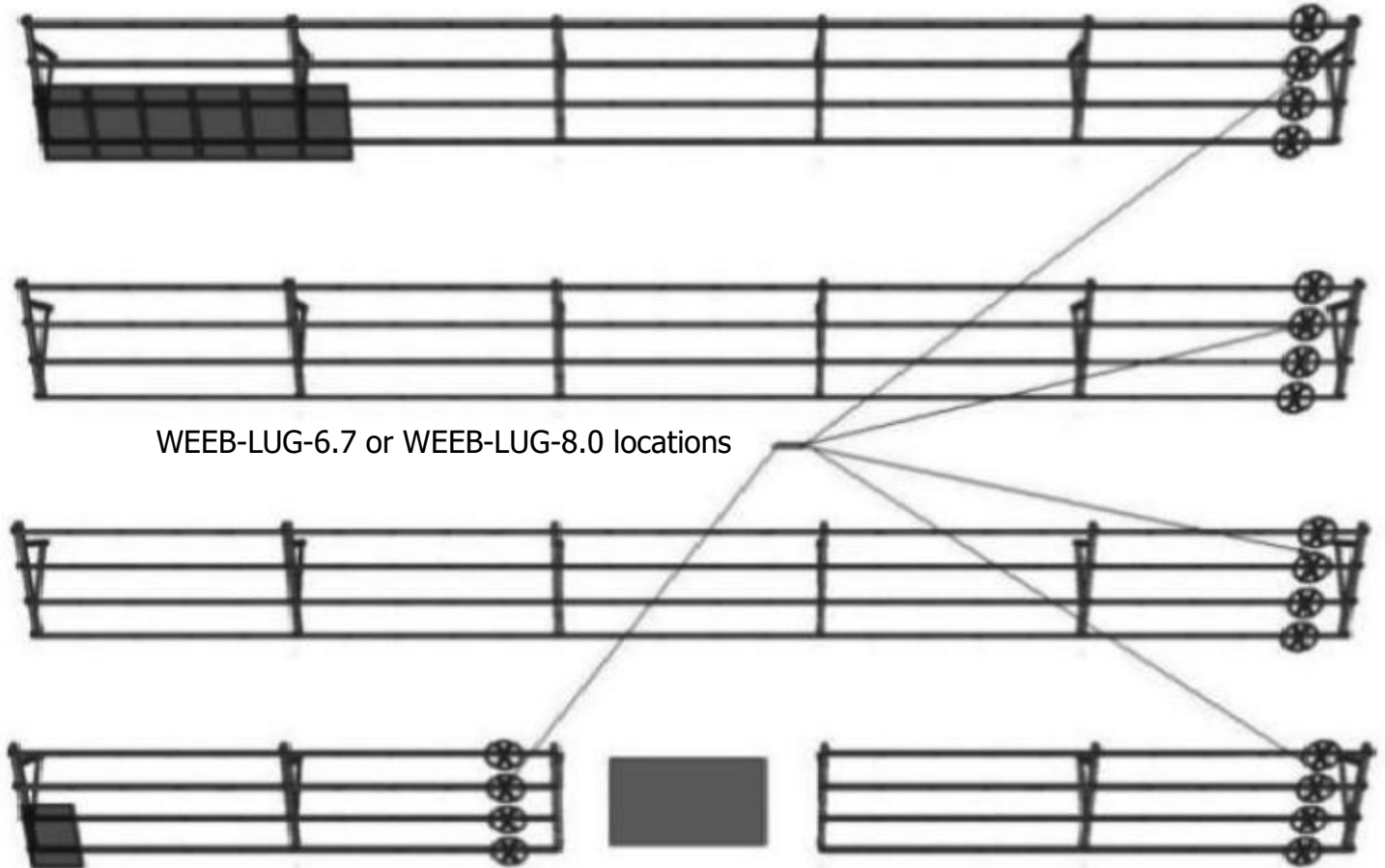
X DENOTES PLACES TO INSTALL WEEB-11.5 OR WEEB-UIR

COLUMN X ROW = C X R = 5 X 1 = 5

WEEB-11.5 OR WEEB-UIR NEEDED = 5

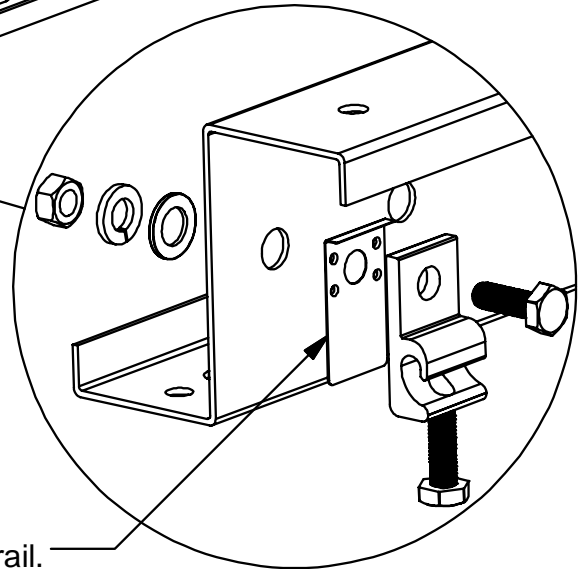
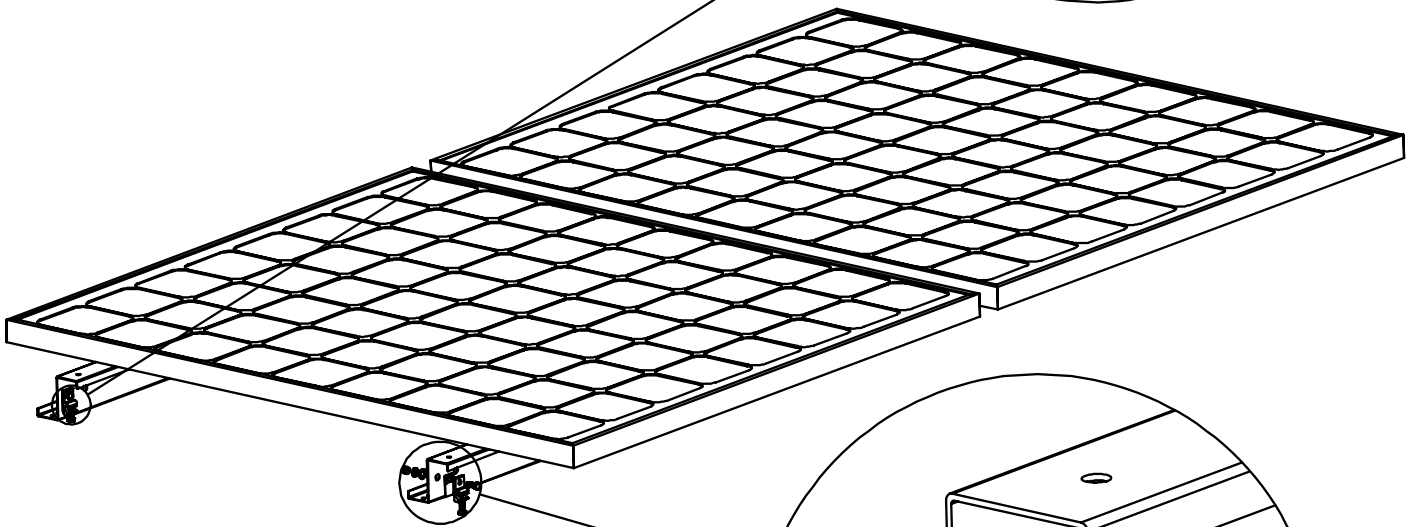
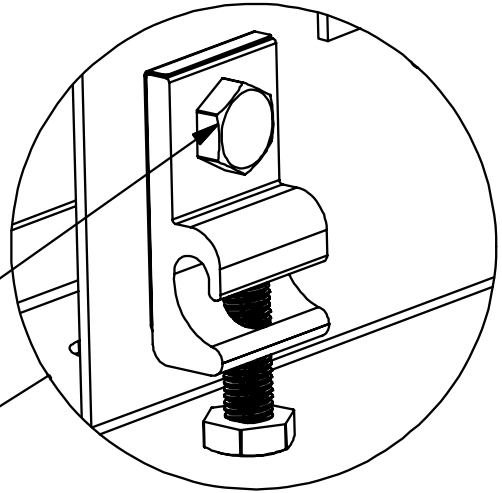
# WEEB-LUG ASSEMBLY LOCATIONS

Install WEEB-LUG-6.7 or WEEB-LUG-8.0 at the following marked locations.



# WEEB-LUG ASSEMBLY

Assemble WEEB-LUG-6.7 or WEEB-LUG-8.0 assembly and torque fasteners to 10ft-lb / 13.5N-m.

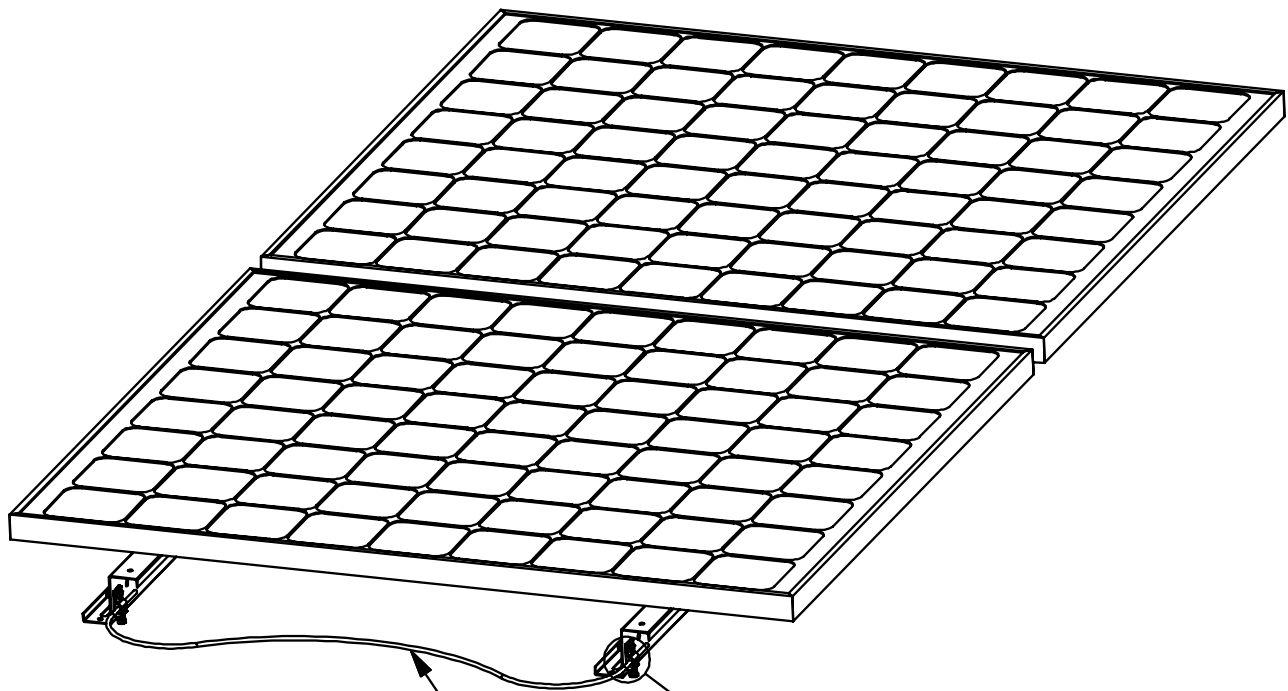


WEEB® washer teeth towards rail.

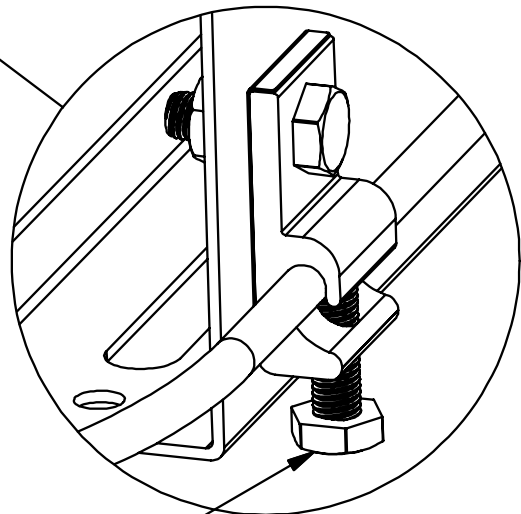
## Important notes:

1. The location of the WEEB-LUG-6.7 or WEEB-LUG-8.0 is the same regardless of module orientation.
2. The WEEB-6.7 and WEEB-8.0 are located underneath the WEEB-LUG-6.7 and WEEB-LUG-8.0 respectively. Ensure position is correct before tightening the hardware.
3. The WEEB-LUG-6.7 may be used with a maximum equipment ground wire of 6 AWG.

# GROUND CONDUCTOR ASSEMBLY



Equipment Ground  
Conductor



Lay in equipment ground conductor  
(6-14 AWG, material CU only)  
and tighten bolt to 5ft-lb / 6.7N-m.

**Customer Service Department**  
7 Aviation Park Drive  
Londonderry, NH 03053  
1-800-346-4175  
1-603-647-5299 (International)