



Washer, Electrical Equipment Bond

WEEB

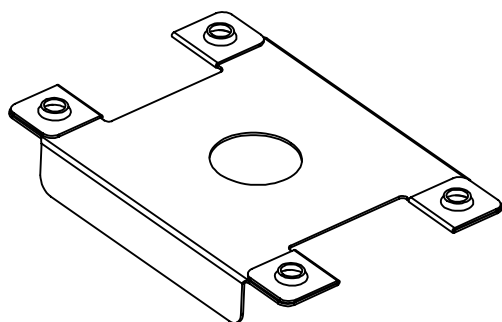
INSTALLATION INSTRUCTIONS

For SOLSTICE

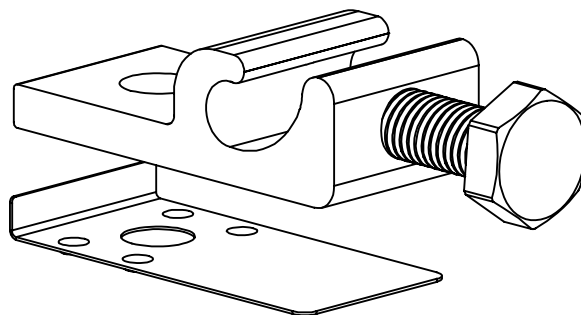
Mounting System only

Please read carefully before installing.

Burndy LLC recommends that the sufficient details of the installation be submitted to the AHJ for approval before any work is started.



WEEB-ASR



WEEB-Lug 6.7

Products are tested to UL 467, CAN/CSA-C22.2 No. 41
US/Canadian standards for safety grounding and bonding equipment



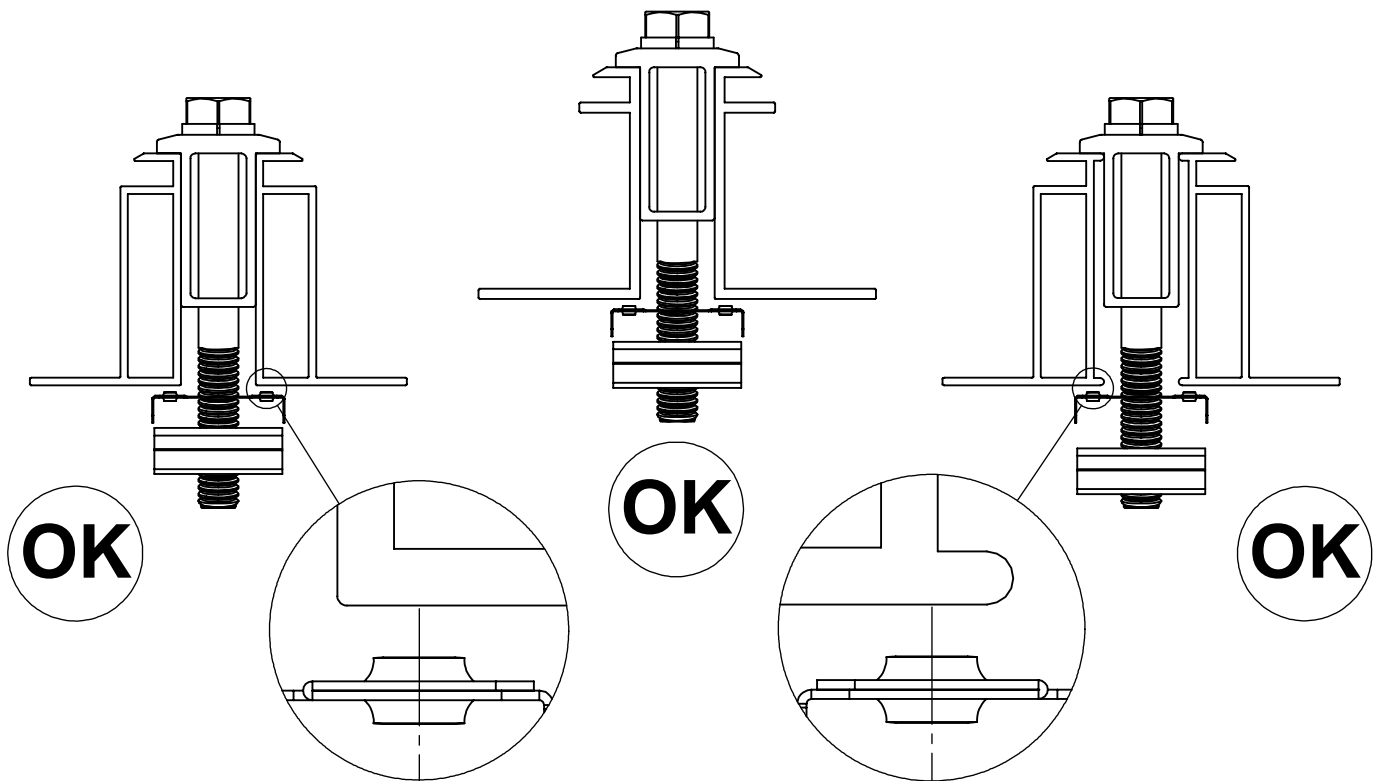
3098177

WEEB COMPATIBILITY

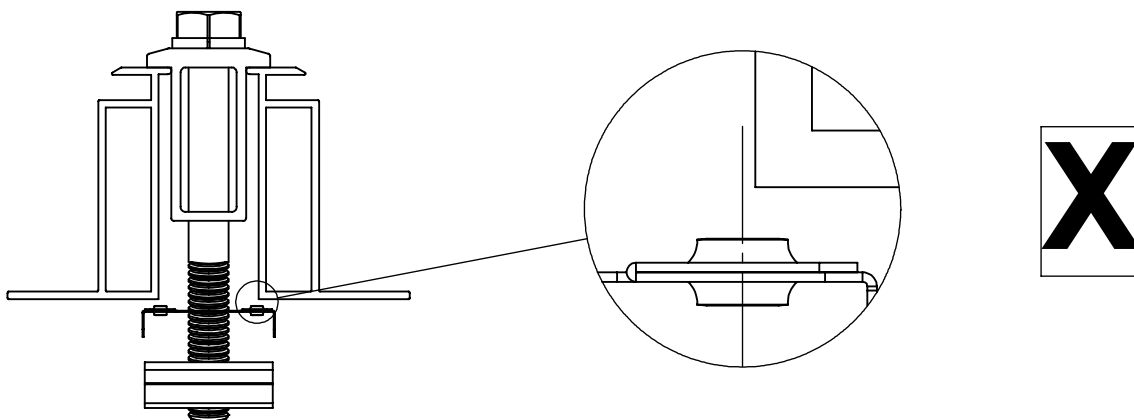
The WEEB family of products can be used to bond anodized aluminum, galvanized steel, steel and other electrically conductive metal structures. All installations shall be in accordance with NEC requirements in the USA and with CSA C22.1 in Canada. The WEEBs are for use with modules that have a maximum series fuse rating of less than 25A.

Standard Top Down Clamps

The WEEBs used for bonding the PV modules to the mounting rails are compatible with various cross-sections of module frames. The following are examples of module frames that are compatible. Notice that the WEEB teeth are positioned completely under the edge of the module frame.

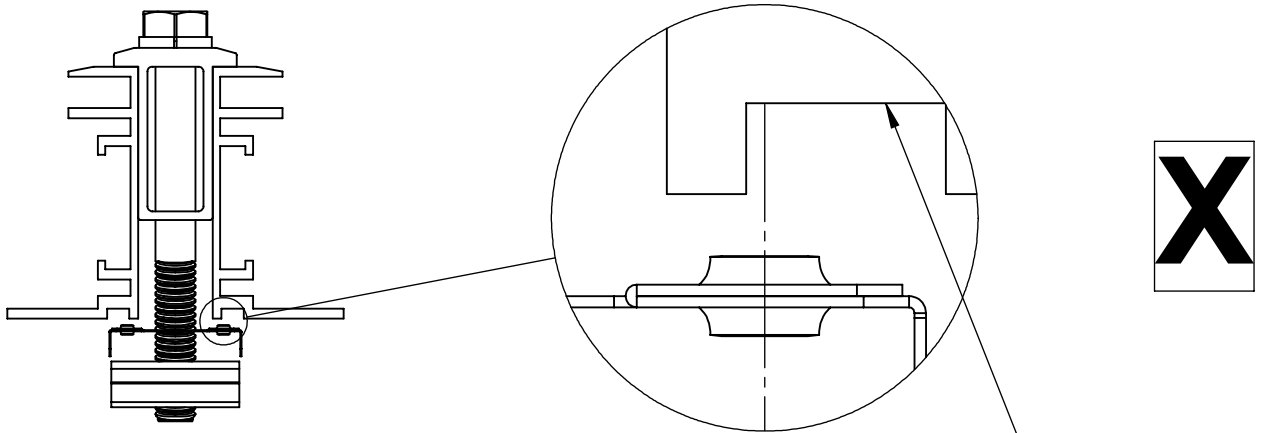


The following is an example of a module frame that is incompatible with the WEEB. The WEEB teeth are positioned only partially under the edge of the module due to the lip on the top edge of the module frame.

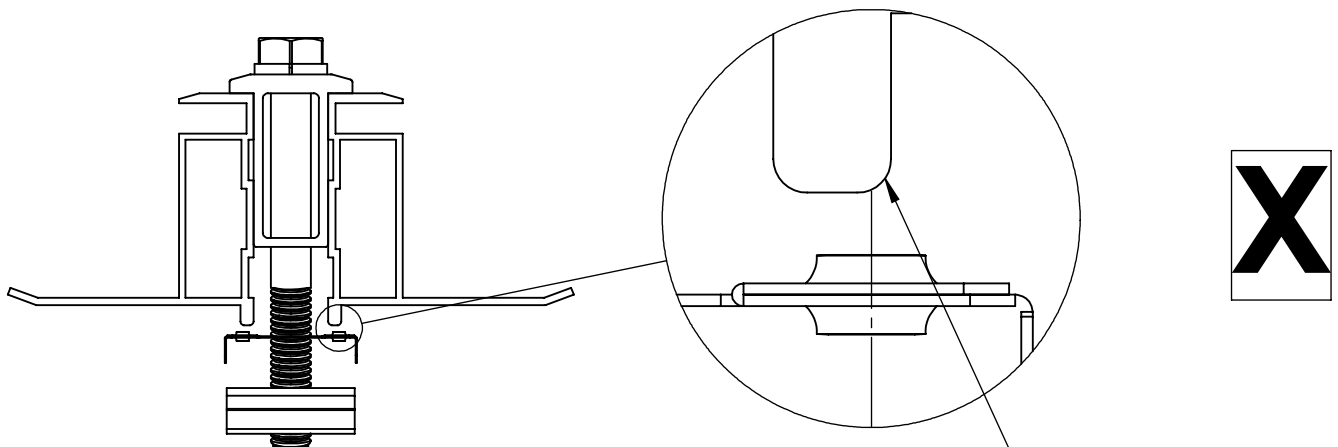


WEEB COMPATIBILITY

Module frames like those shown here may have a ridge or lip on the bottom edge of the frame that would prevent the WEEB teeth from fully embedding.



Shown here is an example of a groove that will prevent the WEEB teeth from properly penetrating the module frame. This type of frame is not compatible with the WEEB.



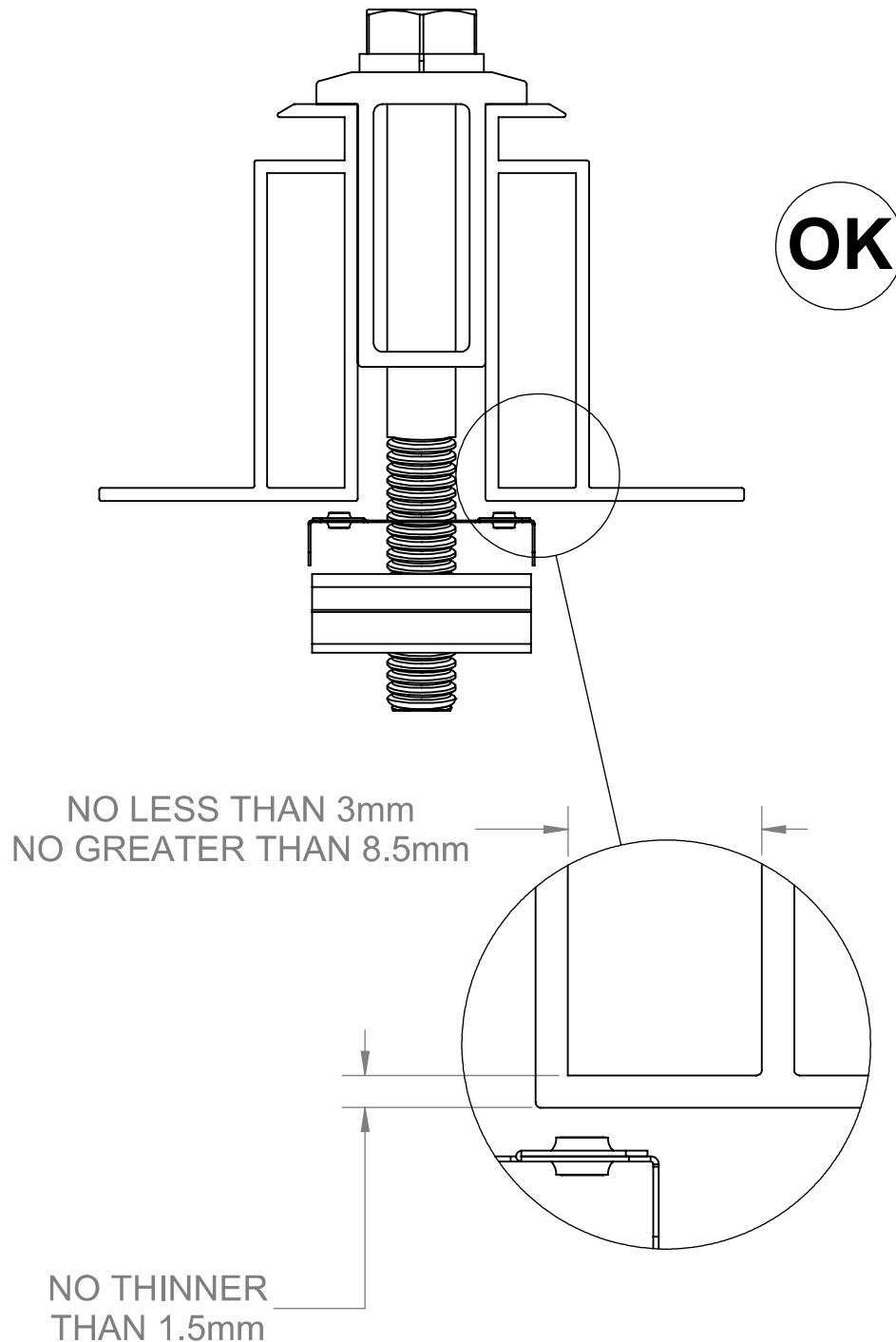
Shown here is an example of a lip that will prevent the WEEB teeth from properly penetrating the module frame. This type of frame is not compatible with the WEEB.

Important Note:

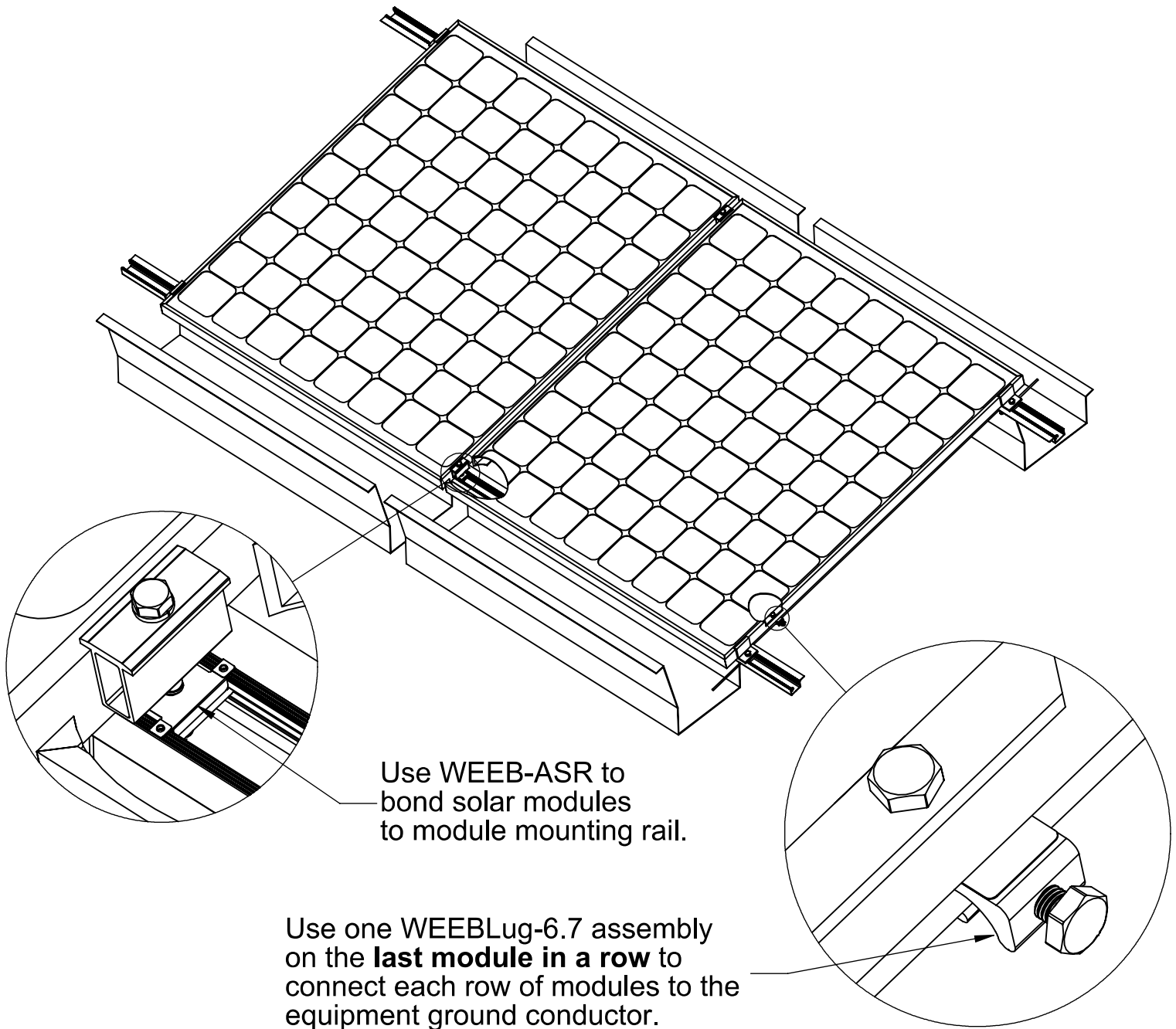
Inspect each module frame used with a WEEB to ensure that the bottom mounting face of the frame is flat, and that there are no hinderances to embedding WEEB teeth. Do not use a module with a frame that prevents the WEEB teeth from embedding fully.

WEEB-ASR on Boxed Module Frames

Certain module frames do not have enough structural strength to withstand the force required to embed a WEEB. These frames will deform and therefore not allow sufficient penetration of the WEEB teeth. The general requirements for minimum module frame thickness of "boxed" type module frames are illustrated below.



SYSTEM OVERVIEW

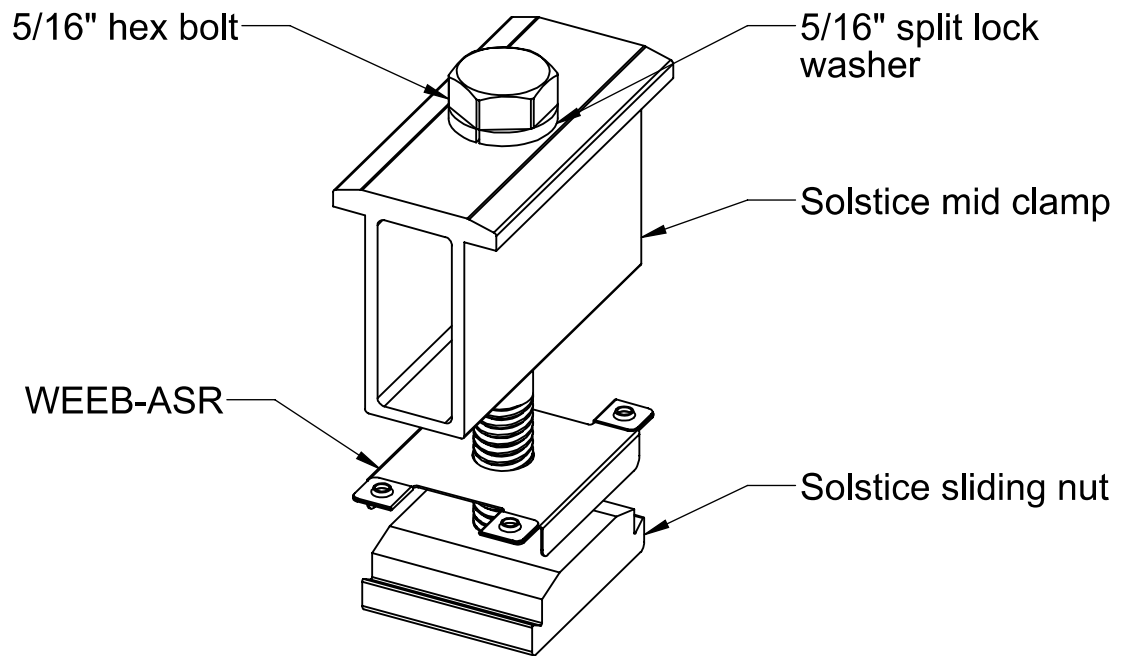


Important notes

1. Use general purpose anti-seize compound on fastener threads when installing WEEBs.
2. The NEC section 690.43 states, "Exposed non-current carrying metal parts of module frames, equipment, and conductor enclosures shall be grounded in accordance with 250.134 or 250.136(A) regardless of voltage."
3. WEEBs are intended for **SINGLE USE ONLY**. Functionality will not be guaranteed if reused.

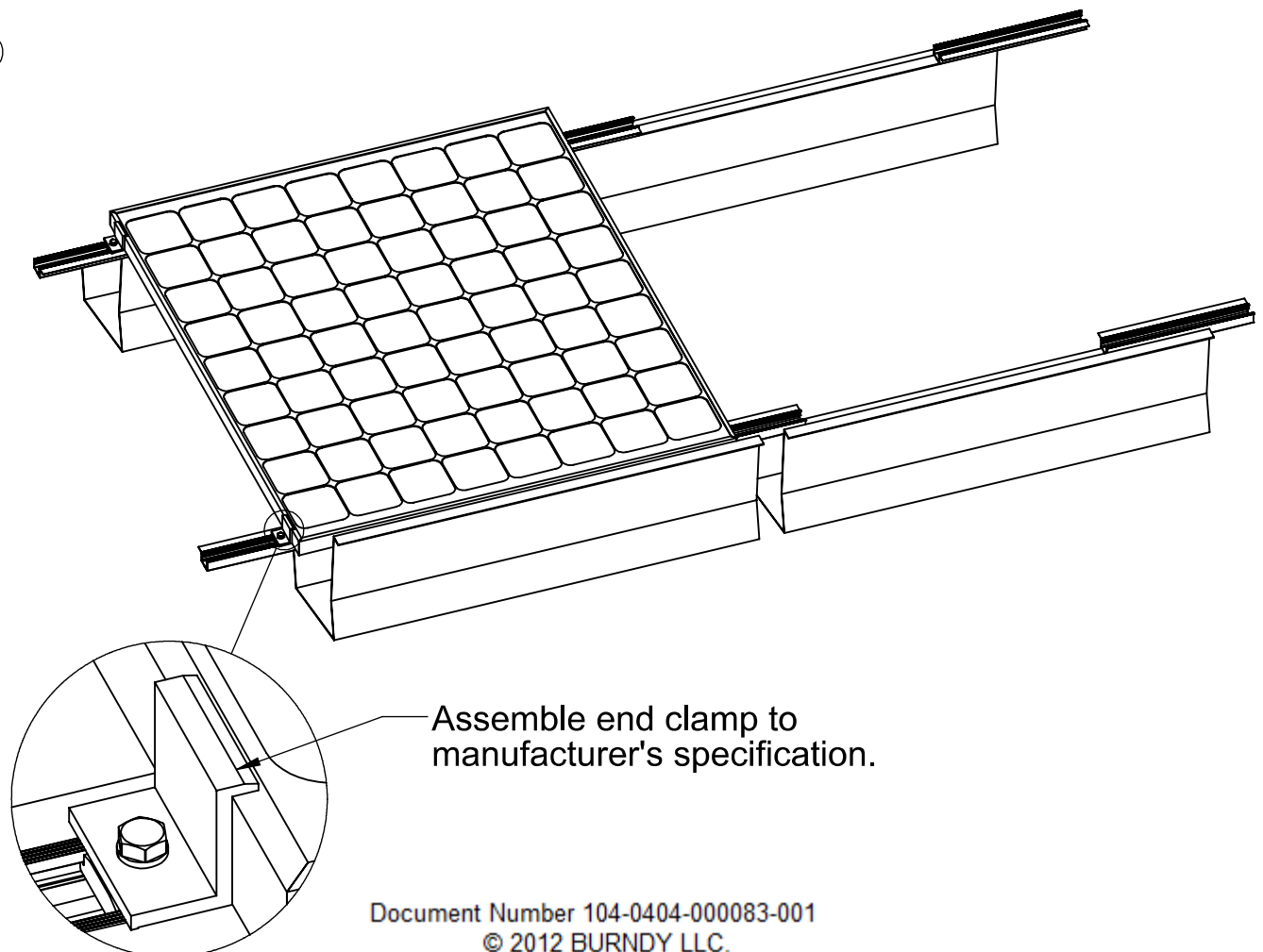
WEEB-ASR ASSEMBLY

①



Pre-assemble WEEB-ASR to mid-clamp assembly as shown. Pre-assembling WEEB-ASR to mid-clamp assembly will contain the small individual parts, reducing the possibility of losing parts during installation.

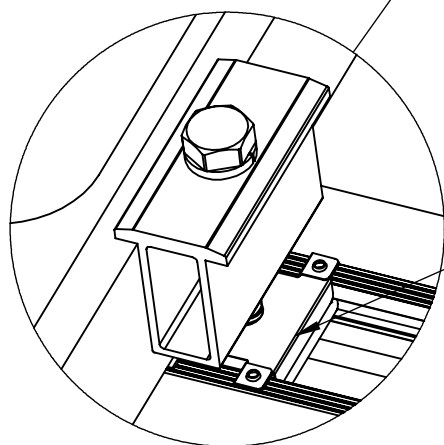
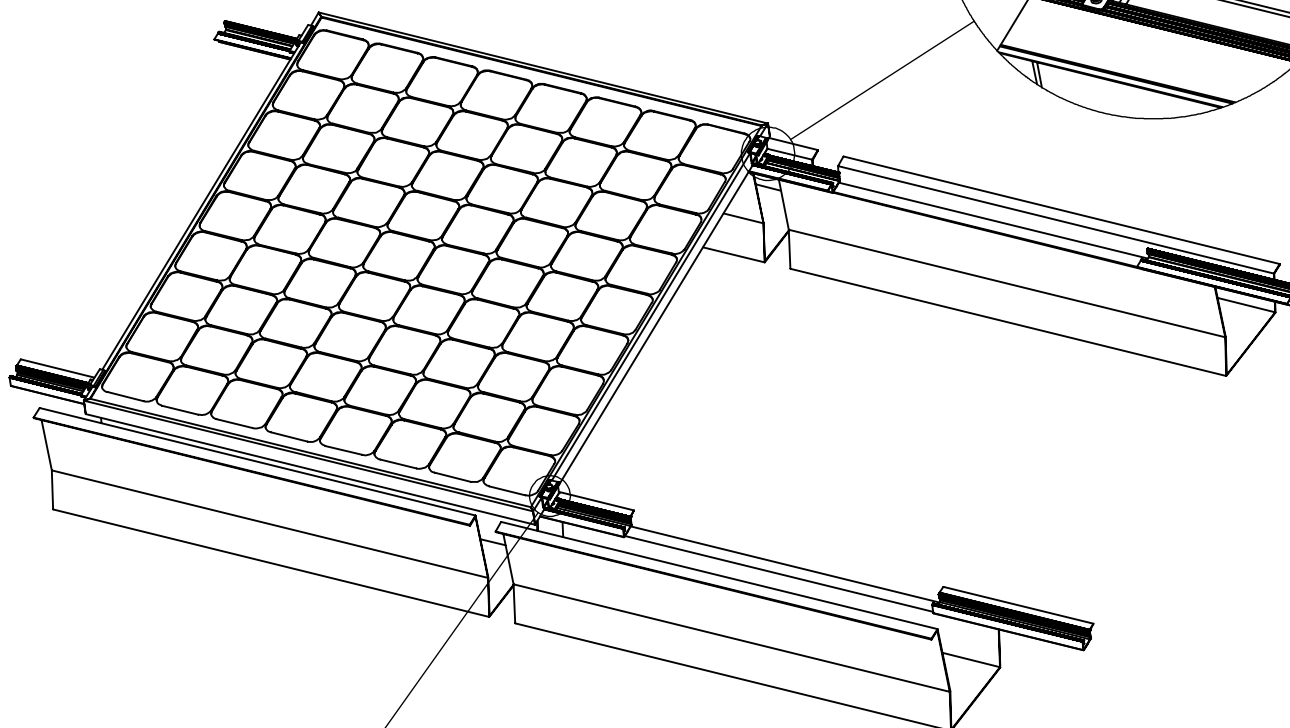
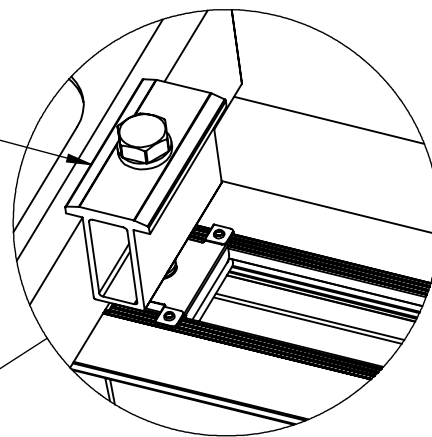
②



③

MIDCLAMP ASSEMBLY

Slide pre-assembled WEEB-ASR and mid-clamp assembly into position.



Slightly lift solar module and slide WEEB-ASR and mid-clamp assembly into position. WEEB teeth will automatically be aligned under the edge of the module when the mid-clamp assembly is correctly installed.

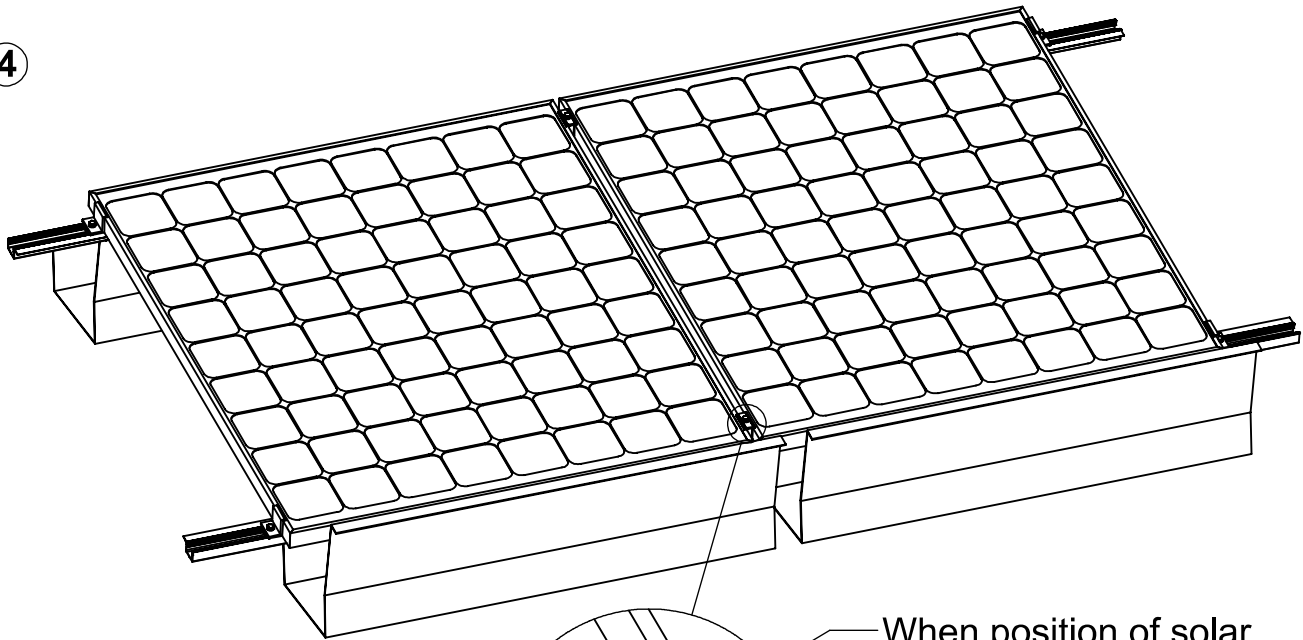
Important note:

To correctly install WEEB-ASR, ensure that both sides of the solar modules are completely positioned against the mid-clamp. Refer to WEEB compatibility page for illustrations. Visually check that WEEBs are properly positioned.

Important note:

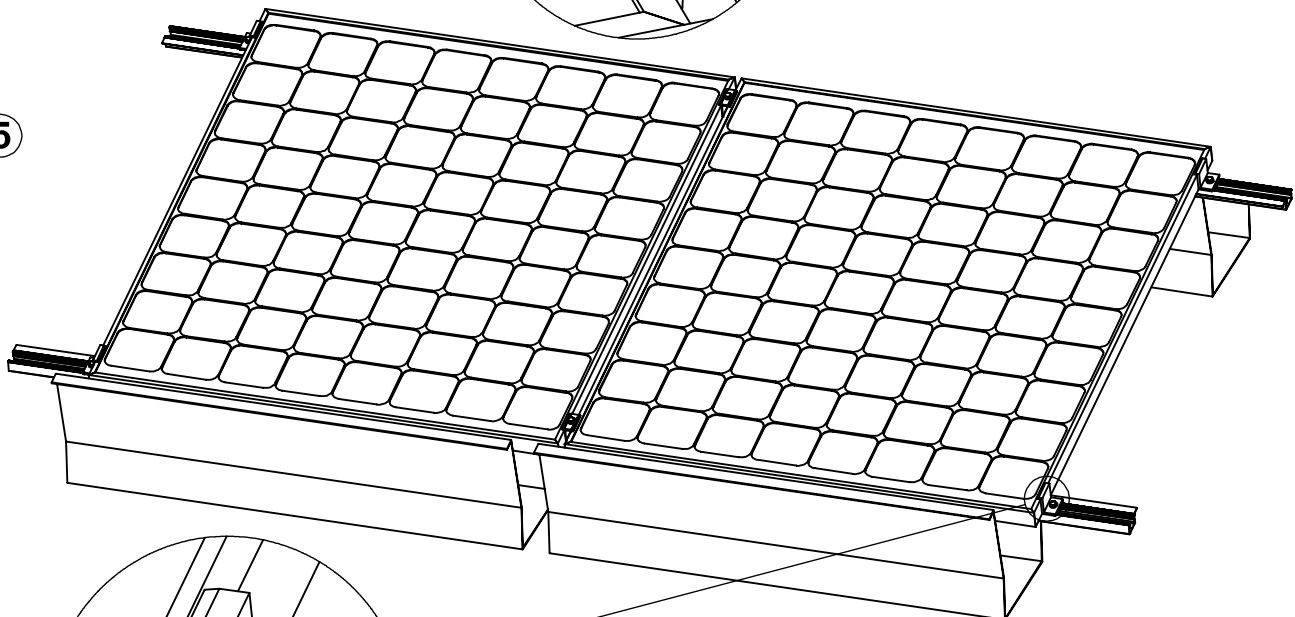
WEEBs are for **SINGLE USE ONLY!** Do not torque fasteners down if position of solar modules is not finalized. Only slightly tighten fasteners to keep modules in place.

④



When position of solar modules are finalized, torque fasteners to 12ft-lb / 20.5 N-m using general purpose anti-seize compound on threads.

⑤

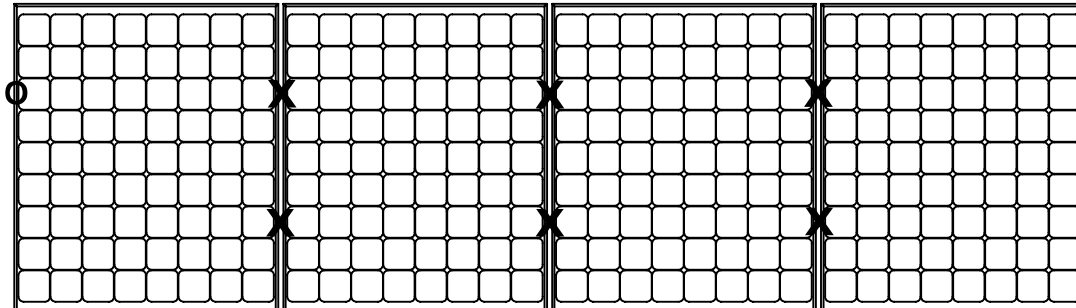


Assemble end clamp to manufacturer's specification.

⑥

WEEB-ASR and WEEBLug-6.7 LAYOUT

EVEN NUMBER OF MODULES IN ROW



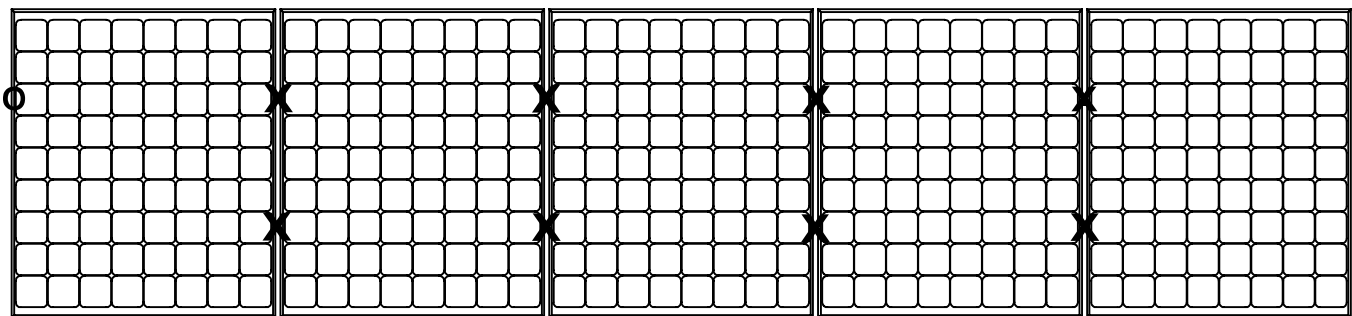
O DENOTES PLACES TO INSTALL WEEBLug-6.7

X DENOTES PLACES TO INSTALL WEEB-ASR

$$C \times R = 4 \times 1$$

$$\text{WEEB-ASR NEEDED} = [(2 \times C) - 2] \times R = [(2 \times 4) - 2] \times 1 = 6$$

ODD NUMBER OF MODULES IN ROW



O DENOTES PLACES TO INSTALL WEEBLug-6.7

X DENOTES PLACES TO INSTALL WEEB-ASR

$$C \times R = 5 \times 1$$

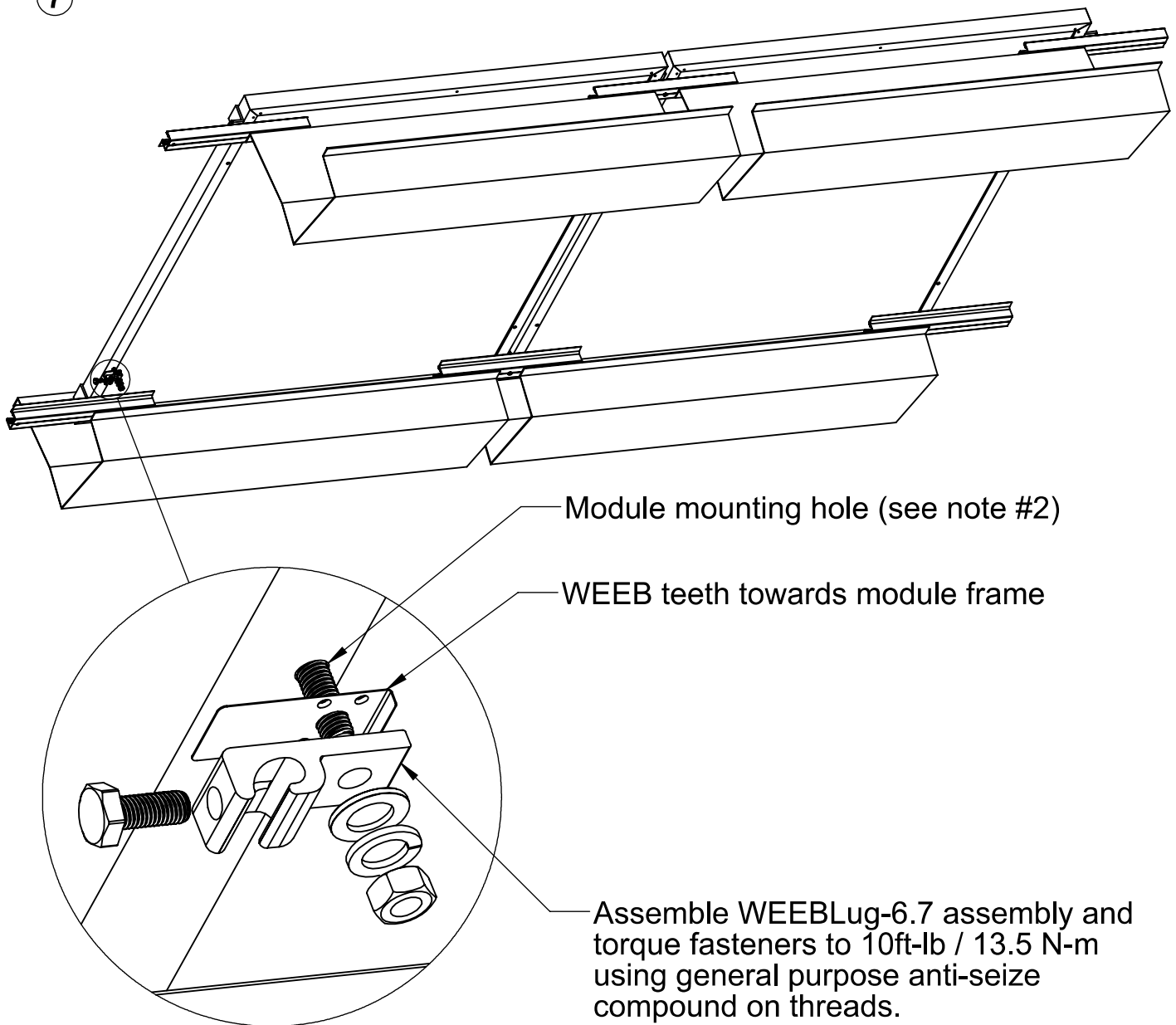
$$\text{WEEB-ASR NEEDED} = [(2 \times C) - 2] \times R = [(2 \times 5) - 2] \times 1 = 8$$

Note:

When replacing a single faulty module, also remove the adjacent module which contacts the same WEEBs as the faulty module. This will ensure that there are never ungrounded modules in the array.

WEEBLUG ASSEMBLY

7

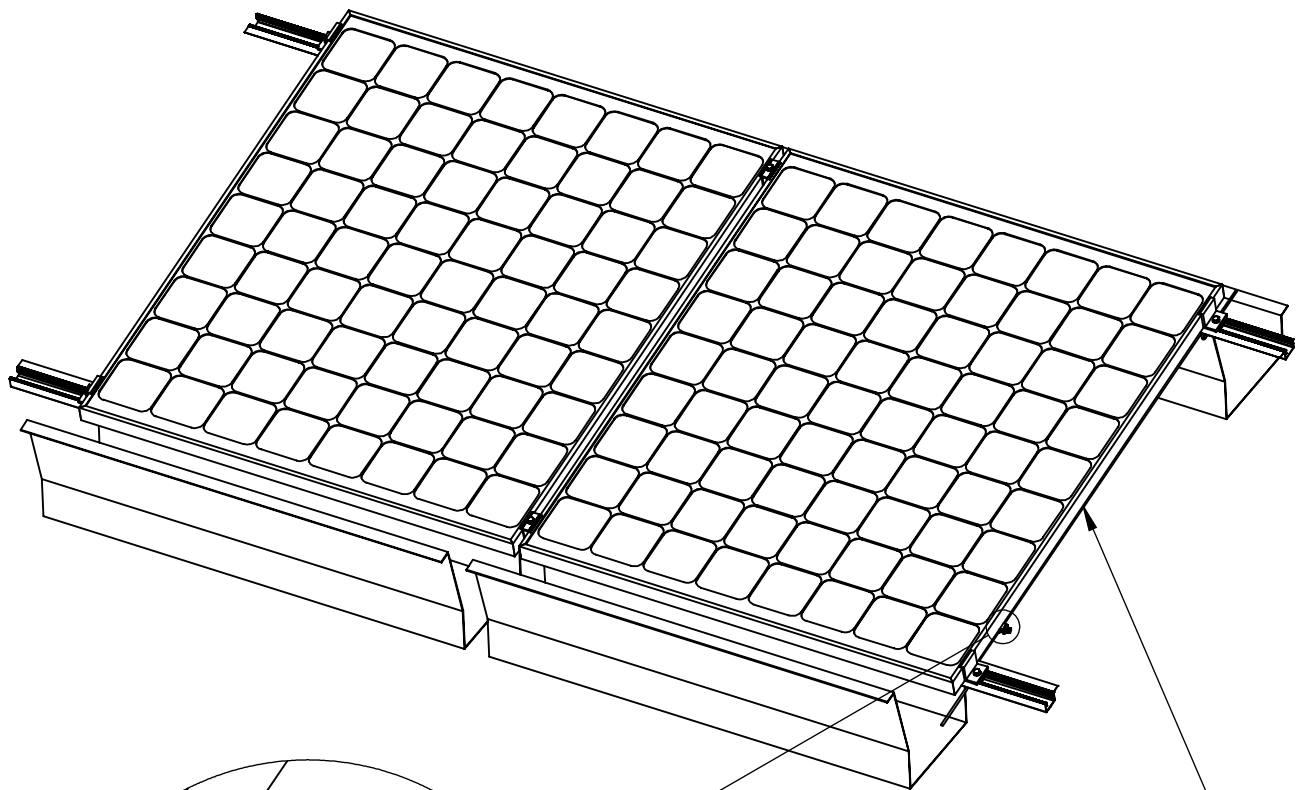


Important note:

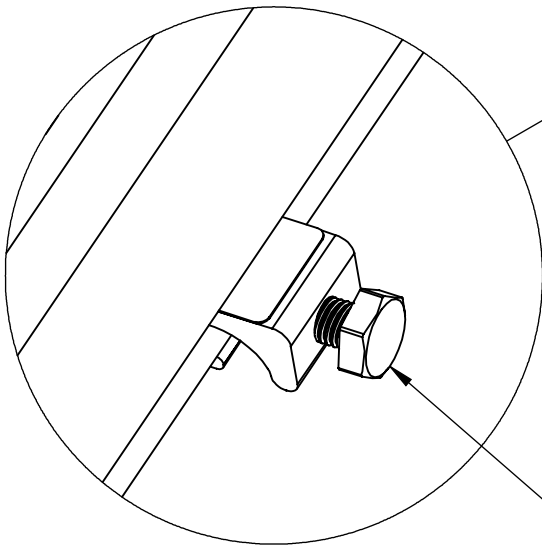
1. Install one (1) WEEBLug-6.7 on the last module of the row in order to connect each module row to the equipment ground conductor.
2. The center of the module mounting hole cannot be closer than 9.50mm to the edge of the module frame in order for the WEEBLug-6.7 to be compatible.
3. WEEBLug-6.7 assembly must be installed either perpendicular or parallel to the edge of the module frame.
4. The WEEBLug-6.7 may be used with a maximum equipment ground wire of 6 AWG.

GROUND CONDUCTOR ASSEMBLY

8



Equipment Ground Conductor



Lay in equipment ground conductor and torque bolt to 7 ft-lb / 10 N-m.

Customer Service Department

7 Aviation Park Drive
Londonderry, NH 03053
1-800-346-4175
1-603-647-5299 (International)