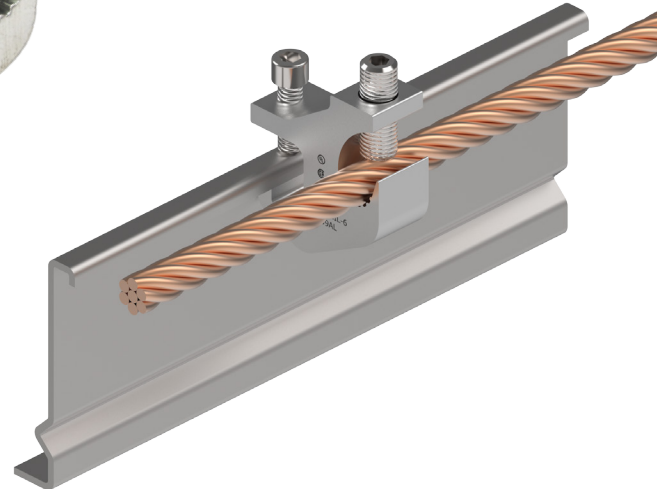
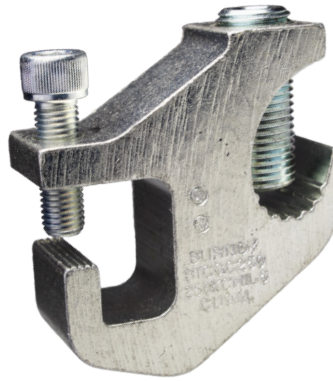


TYPE BTCGC

**Cable Tray Clamp
Copper or Aluminum Conductor
to Aluminum or Steel Cable Tray**

Made of aluminum and tin plated, the BTCGC cable tray clamp accommodates aluminum or copper conductor #6 AWG through 250 kcmil. Suitable for indoor applications, the BTCGC clamp may be used with most types of cable tray with an inside or outside flange design.

Quick and easy installation requiring no drilling or special tools; use with 1/2" maximum straight rail, aluminum and steel cable trays. Tin plated for durability and corrosion resistance. UL Listed for Grounding and Bonding.



Features & Benefits

- Tin plated aluminum for durable, long lasting corrosion resistance
- UL Listed for Grounding & Bonding
- For use on 1/2" max Straight Rail; Aluminum and Steel Cable Trays
- Accommodates most popular styles of cable tray with inside or outside flanges
- Quick and easy installation; no drilling or special tools required
- Set screw bonds clamp to the cable tray while another set screw securely fastens the grounding conductor to the clamp providing vibration resistance and outstanding pull-out values

Catalog Number	Copper or Aluminum Conductor	Straight Rail Thickness	Length	Width	Height	Installation Tooling	Recommended Installation Torque (in-lb)
BTCGC250	#6 AWG - 250 kcmil	1/2" Max	2.25	0.88	2.43	1/4" Hex Key	275