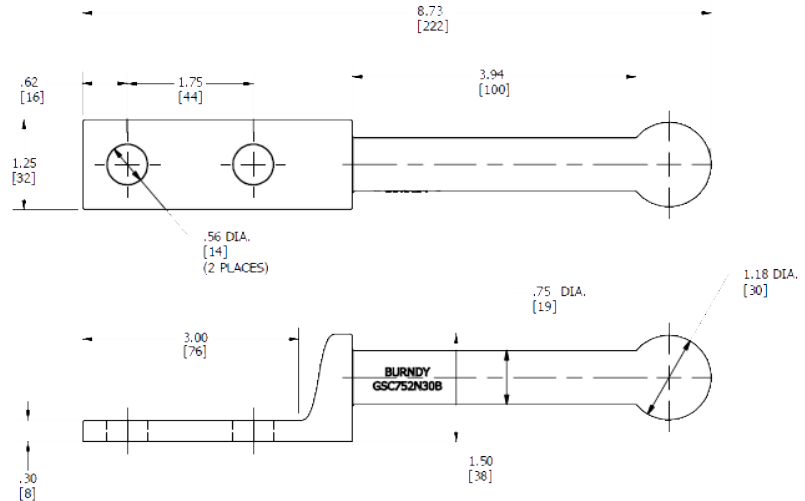


Ground Studs / Ground Stud Cover

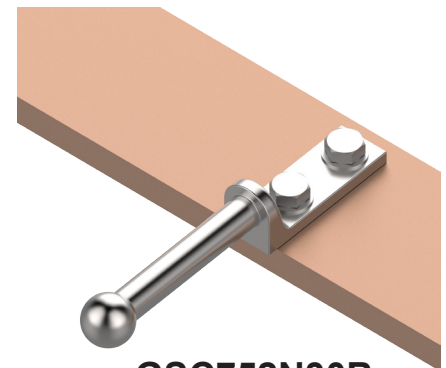
All-in-one Ball and Socket Design with NEMA Pad

The GSC line of grounding studs represents a product line enhancement over our already popular GAD series of grounding studs. Grounding studs are used to create a temporary personal protective ground by providing a low resistance path in the event of a fault. The BURNDY GSC series of studs are currently available in Straight, 45°, and 90° variations with other angles available upon request. The available GSC7530BCOVER provides a snug fit when not in use and serves as animal mitigation.



Features & Benefits

- High Amperage Rating
- Critter Guard/Cover provides a snug fit
- Available in Straight, 45°, and 90° variations
- Ball and Socket design accommodates industry standard clamps
- All-in-one design with NEMA terminal pad, in-line with stud



GSC752N30B

UPC #	Catalog Number	Description	Hole Spacing	Pad Angle	Ball Diameter
621945462977	GSC752N30B	Ground Stud (Straight)	1.75"	straight	30 mm (1.18")
621945462953	GSC752N30B45	Ground Stud (45°)	1.75"	45 degree	30 mm (1.18")
621945462960	GSC72N30B90	Ground Stud (90°)	1.75"	90 degree	30 mm (1.18")
621945483842	GSC7530BCOVER	Ground Stud Cover	—	—	—

Customer Service 1-800-346-4175 | Tool Service Center 1-800-426-8720 | Technical Services 1-800-451-4956 | www.burndy.com