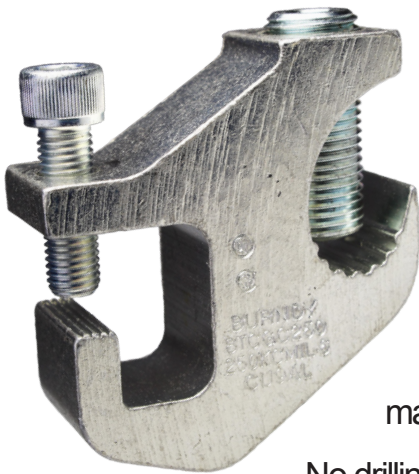


BTCGC250 Cable Tray Clamp Enhancement

CSA Certification to CSA 22.2 NO. 41 Grounding and Bonding



Enhancement

The BTCGC250 Cable Tray Clamp is used to securely clamp a grounding or bonding conductor to cable tray. Made of tin plated aluminum, the clamp has the applicable wire range (6 AWG - 250 kcmil) marked on the body.

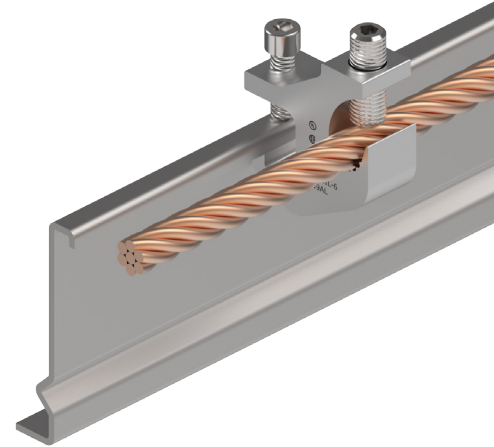
No drilling or punching holes in the cable tray is required for installation so the grounding continuity for the whole system remains intact.

The BTCGC250 clamp is suitable for indoor applications and accommodates most types of cable trays that have inside or outside flange designs.

The Grounding team is pleased to announce the BTCGC250 CSA Certification now includes CSA 22.2 NO. 41 for Grounding and Bonding. The inclusion of this certification was made to better support our Canadian partners and look forward to supporting them in this sales effort.

Features & Benefits

- CSA 22.2 No. 41 and UL Listed for Grounding & Bonding
- Tin plated aluminum for durable, long lasting corrosion resistance
- For use on 1/2" max Straight Rail; Aluminum and Steel Cable Trays
- Accommodates most popular styles of cable tray with inside or outside flanges
- Quick and easy installation; no drilling or special tools required
- Set screw bonds clamp to the cable tray while another set screw securely fastens the grounding conductor to the clamp providing vibration resistance and outstanding pull-out values



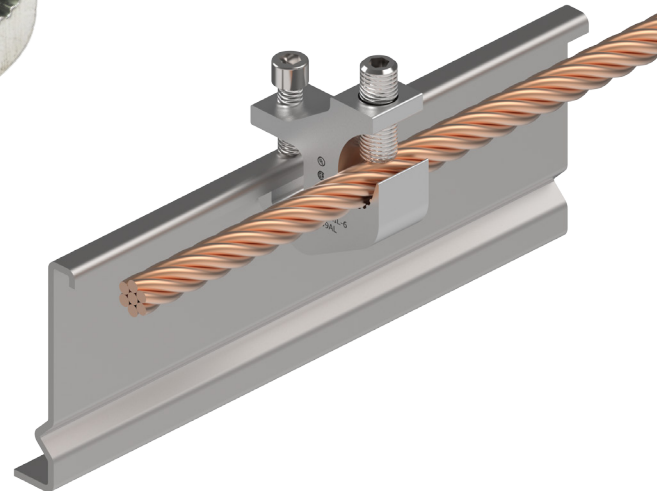
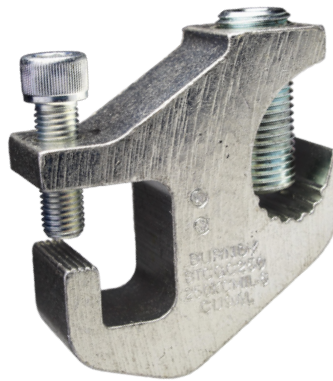
Customer Service 1-800-346-4175 | Tool Service Center 1-800-426-8720 | Technical Services 1-800-451-4956 | www.burndy.com

TYPE BTCGC

Cable Tray Clamp
Copper or Aluminum Conductor
to Aluminum or Steel Cable Tray

Made of aluminum and tin plated, the BTCGC cable tray clamp accommodates aluminum or copper conductor #6 AWG through 250 kcmil. Suitable for indoor applications, the BTCGC clamp may be used with most types of cable tray with an inside or outside flange design.

Quick and easy installation requiring no drilling or special tools; use with 1/2" maximum straight rail, aluminum and steel cable trays. Tin plated for durability and corrosion resistance. UL Listed for Grounding and Bonding. CSA 22.2 NO.41 for Grounding and Bonding.



Features & Benefits

- Tin plated aluminum for durable, long lasting corrosion resistance
- UL Listed / CSA Certified for Grounding & Bonding
- For use on 1/2" max Straight Rail; Aluminum and Steel Cable Trays
- Accommodates most popular styles of cable tray with inside or outside flanges
- Quick and easy installation; no drilling or special tools required
- Set screw bonds clamp to the cable tray while another set screw securely fastens the grounding conductor to the clamp providing vibration resistance and outstanding pull-out values

Catalog Number	Copper or Aluminum Conductor	Straight Rail Thickness	Length	Width	Height	Installation Tooling	Recommended Installation Torque (in-lb)
BTCGC250	#6 AWG - 250 kcmil	1/2" Max	2.25	0.88	2.43	1/4" Hex Key	275