



Critical Infrastructure

Invest in your facility with connections you can trust

The locations with your most critical assets demand our most robust grounding solutions to date.

Developed specifically for critical infrastructure, the new BURNDY line of GA-H grounding clamps offer uncompromising solutions. These clamps accommodate either 6" or 8" square posts, incorporate a tapered U-Bolt and are offered with stainless steel hardware.

Range taking from #4-300 kcmil the GA-H ground clamps are cULus Listed for direct burial in earth or concrete.

Ask your local BURNDY Sales Representative for more information.



© BURNDY LLC, 2018

Connecting Power to Your World®



Heavy Duty Ground Clamps

Invest in your facility with connections you can trust

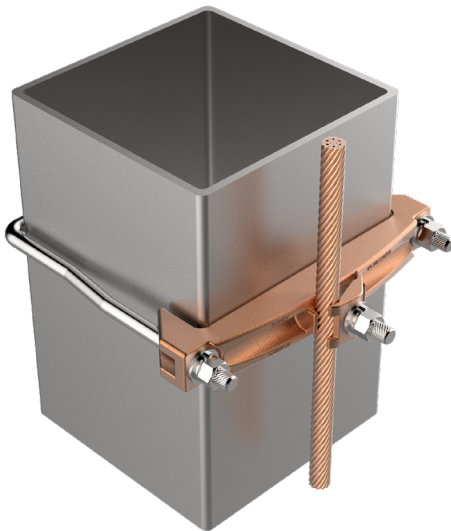
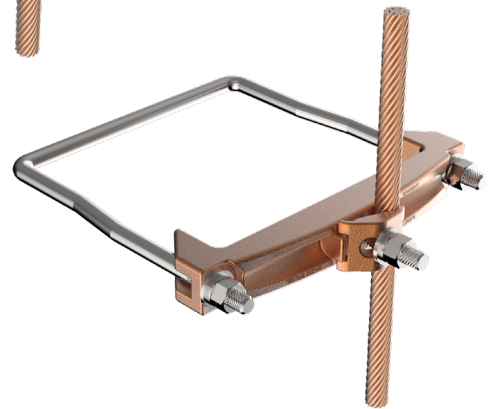
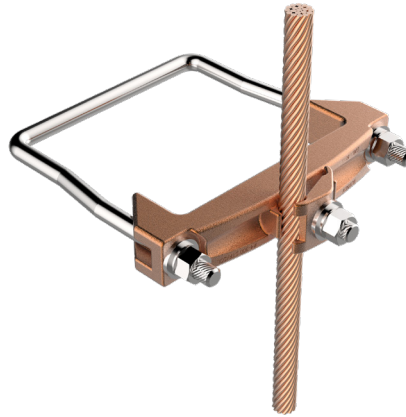
TYPE GA-H

Ground Connector For Copper Cable to Square Fence Post

High copper alloy ground clamp for joining copper cable (#4 AWG - 300 kcmil) to square fence posts. Stainless Steel hardware for superior corrosion protection.

Features & Benefits

- Robust design for 6" and 8" square fence posts
- Tapered bolt design enhances connection to post
- Stainless steel hardware
- cULus Listed for direct burial in earth and concrete



Catalog Number	Accommodates		H	Hardware size	W	Recommended Torque in-lb
	Square Fence Post	Copper Conductor				
GA600H30SS	6"	#4 AWG - 300 kcmil	9.38	1/2"	8.38	480 in-lb
GA800H30SS	8"		11.38	1/2"	10.38	480 in-lb

Customer Service 1-800-346-4175 | Tool Service Center 1-800-426-8720 | Technical Services 1-800-451-4956 | www.burndy.com



Connecting Power to Your World®

