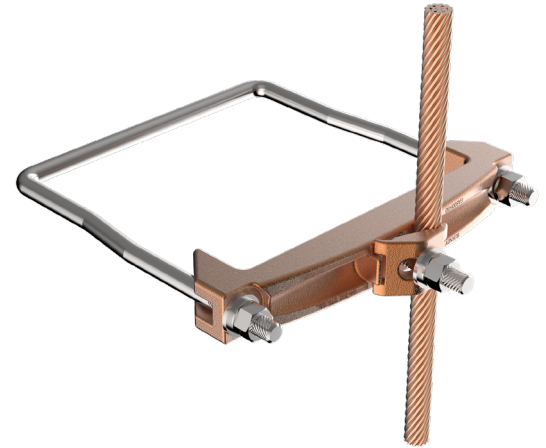
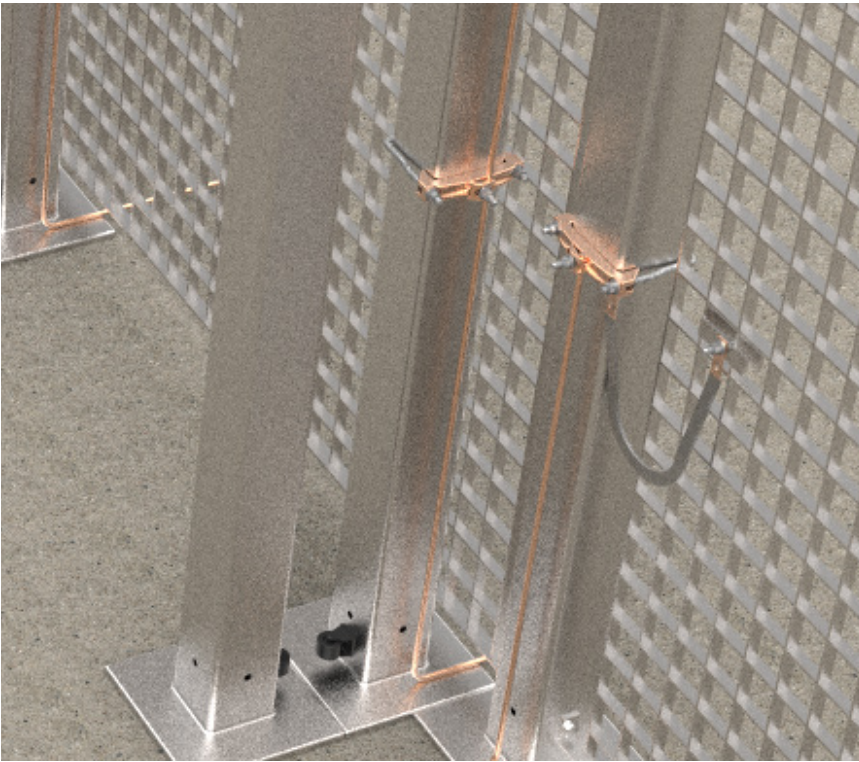


# Heavy Duty Ground Clamps

*Invest in your facility with connections you can trust*



## Introduction

The GA600H30SS and GA800H30SS heavy duty square ground clamps were developed for use in substation hardening applications. The need for large, square, fence post ground clamps has become increasingly common as utilities have moved to a more robust means of protecting their assets.

These square post clamps accommodate #4 AWG - 300 kcmil copper conductor and are available in both 6" and 8" versions. Supplied with stainless steel hardware, cULus Listed, and rated for Direct Burial in earth or concrete, the GA600H30SS (6") and GA800H30SS (8") clamps are a welcome addition to The Grounding Superstore™.

Customer Service 1-800-346-4175 | Tool Service Center 1-800-426-8720 | Technical Services 1-800-451-4956 | [www.burndy.com](http://www.burndy.com)