



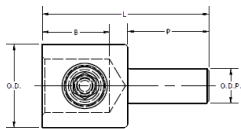
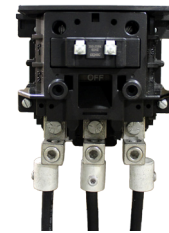
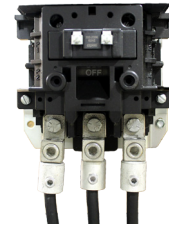
Mechanical Pin Adaptors

Don't Get Caught in a "Pin"ch!

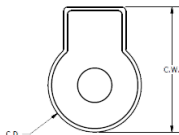
Features & Benefits



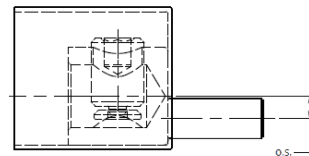
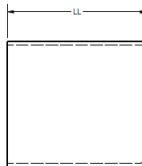
- AL9CU Dual rated for both copper and aluminum conductor
- 600 Volt Rated
- UL Listed to the UL Wire Connector standard UL486A-B
- Rated for use with Flex (fine stranded) conductor
- Range taking conductor port
- Only 3 pin sizes required to accommodate a wire range of #6 AWG to 777.7 DLO
- Off-centered Pin available to reduce center-to-center distance between adjacent pins
- Easy installation with the use of a torque wrench - no crimping tool and/or die required
- Plastisol insulated covers provided with each connector
- Covers are molded to fit around set screws protruding from connector



PIN



COVER



ASSEMBLY

Catalog Number	Wire Range	Pin Dimensions						Cover Dimensions			Assembly Dim.	Installation Torque (in-lbs)	Hex Key	Amp Rating
		O.D.	B (Strip Length)	L	P	O.D.P.	Pin Size Equiv.	C.D.	C.W.	LL	O.S.			
KAP1/0	#6 - 1/0 AWG	1.00	.97	2.01	.84	.29	2 AWG	1.12	1.43	1.92	.56 / [14]	100	1/4"	170
KAPO1/0	Class B, C, H, I, K, DLO	[25]	[25]	[51]	[21]	[7]		[28]	[36]	[49]	.27 / [7]			
KAP350	1/0 - 350 kcmil	1.38	1.11	2.75	1.34	.57	250 kcmil	1.50	2.00	2.22	.75 / [19]	450	3/8"	350
KAPO350	Class B, C, H, I, K, DLO	[35]	[43]	[70]	[34]	[14]		[38]	[51]	[56]	.31 / [8]			
KAP750	350 - 750 kcmil	1.75	2.30	4.46	1.76	.81	500 kcmil	1.87	2.37	3.51	.94 / [24]	500	1/2"	535
KAPO750	Class B, C, H, I, K, DLO	[44]	[58]	[113]	[45]	[21]		[48]	[60]	[89]	.38 / [10]			

Customer Service 1-800-346-4175 | Tool Service Center 1-800-426-8720 | Technical Services 1-800-451-4956 | www.burndy.com



Connecting Power to Your World®

