

TYPE GCS

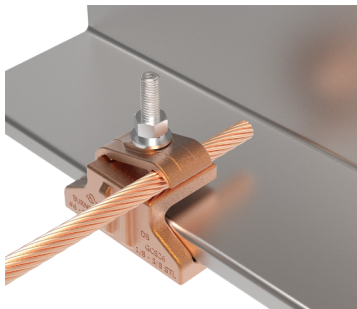
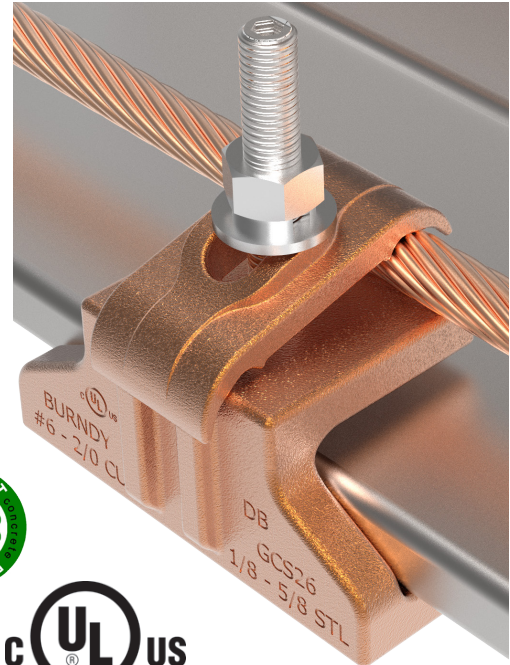
The Constrictor™

Ground Connector to Steel

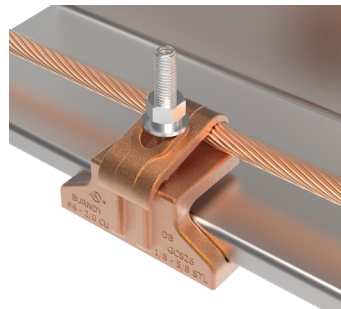
The GCS26 connector is used to ground cable to steel in applications where drilling is either not possible or unwanted. Installation of the GCS26 connector requires no power tools and is suitable for all applications particularly where power equipment of any kind is not allowed. The Constrictor™ GCS series of ground connectors are cULus Listed for Grounding and Bonding.

Features & Benefits

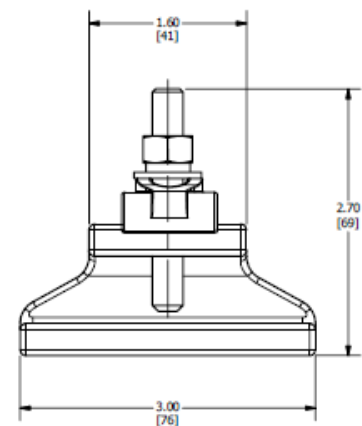
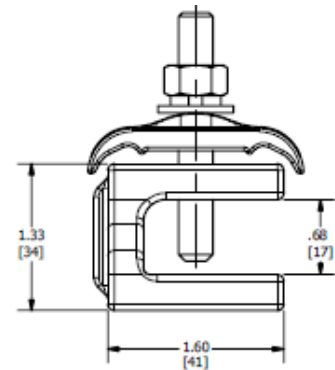
- cULus for Grounding and Bonding; Direct Burial rated for installation into earth and concrete
- Accepts beam thickness: .125 - .625" (1/8 to 5/8")
- Conductor range from #6 to 2/0
- Versatile; allows parallel or perpendicular conductor orientation
- Stainless steel hardware
- 5/32" Allen cup point screw penetrates coatings on steel
- No special tooling required
- Applicable for use in "extremely volatile environments"



Perpendicular Configuration



Parallel Configuration



Catalog Number	Accommodates		Installation Torque	Hardware Size
	Copper Conductor Size	Beam Thickness		
GCS26	#6 to 2/0	1/8" to 5/8" (.125" to .625")	180 in-lb on hex nut; 100 in-lb on Allen screw	1/2" hex nut; 5/32" Allen key
GCS26TN				