



GAI-TRONICS®
A HUBBELL COMPANY

GUDA

GAI-Tronics Universal Device Application

Confidentiality Notice

This manual is provided solely as an installation, operation, and maintenance guide and contains sensitive business and technical information that is confidential and proprietary to GAI-Tronics. GAI-Tronics retains all intellectual property and other rights in or to the information contained herein, and such information may only be used in connection with the operation of your GAI-Tronics product or system. This manual may not be disclosed in any form, in whole or in part, directly or indirectly, to any third party.

General Information

The GUDA (GAI-Tronics Universal Device Application) enables configuration of GAI-Tronics network devices; including HUBBCOM™ IP devices and the SP2 Page/Party® interface. The application has the following requirements:

- Windows 10® with Microsoft .NET Framework 4.6.1
- Intel® i3 2.0 GHz with dual cores or better processor
- 4 GB ram or more
- DirectX 9 capable video card with a 1024 × 768 dpi minimum screen resolution

Obtain the GUDA software

Download the GUDA software from the GAI-Tronics website at <https://www.gai-tronics.com>:

1. Hover the mouse over the RESOURCES tab at the top of the webpage.
2. Under SOFTWARE, click GUDA—GAI-Tronics Universal Device Application.

3. Click the  button to download the application.

Install the GUDA software

1. Double click the downloaded application to launch the installation.
2. Click the Run button to continue past the open file security warning.
3. Click *Yes* when prompted by the system to allow the installation to change the PC's configuration.
4. Keep the default installation path and click next.

5. Keep the default start menu folder and click next.
6. Select the option to create a desktop shortcut if desired and click next.
7. Select the option to run the GUDA, if desired, and click Finish to complete the installation configuration

Launch the GUDA Software

1. Launch the GUDA application from the desktop shortcut or from the Windows® start menu.

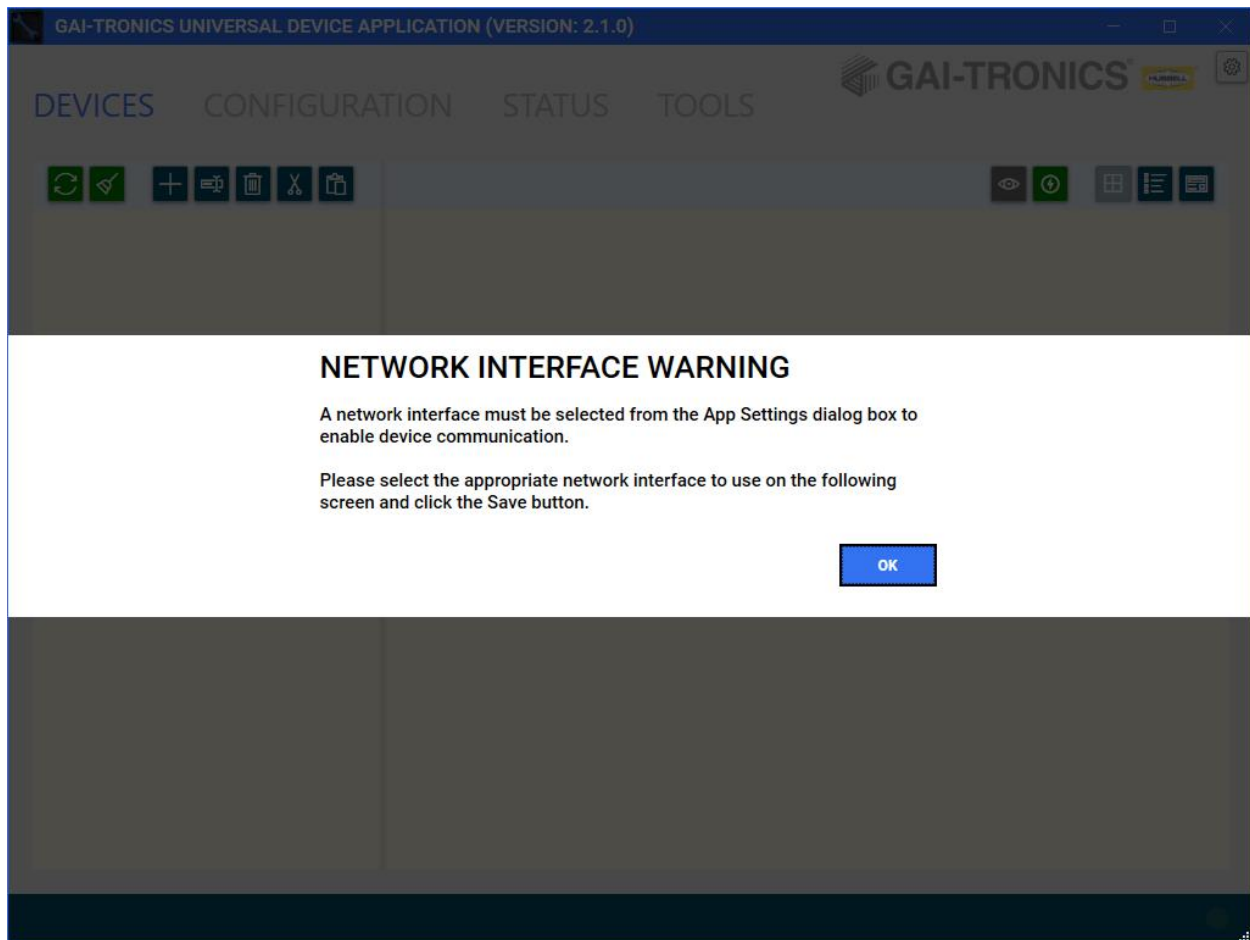


Figure 1. Program First Launch

2. Click **OK** to open the application settings.

Application Settings

The first launch of the GUDA opens the EDIT APP SETTINGS dialog box. Access this screen by clicking the gear icon in the upper right corner of the GUDA window. Modify the default application settings in the EDIT APP SETTINGS dialog box (See [Figure 2](#)).

Figure 2. Application Settings

Device Communication Options

Select Network Interface—Select the network adapter connected to the network containing the HUBBCOM devices.

Refresh Button—Click to display additional networks after connecting to a desired network.

Automatic Find Devices Interval—*Manually via refresh* | Every 30 seconds | Every minute | Every 5 minutes | Every 10 minutes | Every 15 minutes.

Site Display Options

Number of Columns in Device List—*Auto* | 1–8 (NOTE: This applies only to the *Grid View* of the discovered devices in the selected folder)

Display Name for Devices—*Device Name* | Hostname | Device Name, Hostname | Hostname, Device Name

Device Sort Field—*Device Name* | Hostname


Enable Multi-Site Mode—Use this option to manage alternate site layouts for separate locations and/or networks (i.e. from a secondary network adapter). This prevents mixing devices from different sites in the same layout. Restart the application after selecting this option. The MANAGE MULTIPLE SITE LAYOUTS interface enables creating, renaming, and deleting new site layouts.

NOTE: Choose the correct network interface before loading a site layout (see [Figure 3](#) and [Figure 4](#)).

Manage Multiple Site Layouts


Confirm the selected network interface to use and then select an existing site layout or create a new one. Click the LOAD SITE LAYOUT button to connect to the devices for that site.

Network Interface to Use DGE-530T Gigabit Ethernet Adapte 10.17.3.21 ↻



BIGMAN DEVICES SITE LAYOUT

Created Date: 8/20/2019 2:40:07 PM
Last Used Date: 9/22/2020 10:39:50 AM



HUBBELL NETWORK SITE LAYOUT

Created Date: 8/20/2019 2:51:30 PM
Last Used Date: 9/22/2020 10:50:57 AM

New Site Layout

Rename Site Layout

Delete Site Layout

LOAD SITE LAYOUT

Figure 3. Selecting the Network Interface and Site Layout

Confirm Matching Network Interface with Site Layout

There could be undesired devices discovered for the site layout selected if the wrong network interface is chosen. Please confirm the following is correct and click OK to continue or Cancel to make a change.

Network Interface: DGE-530T Gigabit Ethernet Adapter. (Ethernet 2/10.17.3.21)
Site Layout: HUBBELL NETWORK SITE LAYOUT

OK

Cancel

Figure 4. Network Interface/Site Layout Match Confirmation

Use the GUDA Software

The initial program screen loads:




Figure 5. Initial Program Screen


The left side of the screen contains the site layout. Modify the layout by organizing the site's devices into folders. The right side of the screen contains the devices in the folder selected on the left.


Execute commands by selecting a device or folder and clicking the desired toolbar button or by right clicking a device or folder and using the pop-up menu.


Site Layout Toolbar Options

 **Contact/Refresh Devices**—Attempts to contact all supported devices on the connected network, refreshes the site layout, and saves the current site layout.

NOTE: The GUDA automatically saves the site layout in direct relation to the *Automatic Find Device Interval*.

 **Site Clean-up**—Removes all devices in the site layout that are *currently unavailable*.

 **Add New Folder**—Adds a new folder in the site layout under the currently selected folder.

 **Rename Folder**—Allows renaming the selected folder.

 **Remove Folder/Device**—Removes the selected folder or device.

NOTE: The folder must be empty and not contain any folders or devices. Select multiple devices for removal by holding the Ctrl-key or Shift-key and selecting the devices in the view on the right.



Cut Folder/Device—Temporarily removes the selected folder or one or more selected devices for pasting at a new location in the site layout.

NOTE: A cut folder contains all subfolders and devices contained in the folder.



Paste Folder/Device—Moves the previously cut folder or devices into the selected folder.

Site Layout Folder View Options



Toggle All Devices View—Displays all devices in the folder and its subfolders on the right side from the selected folder, as if the subfolders do not exist.

NOTE: This combines all devices beneath the selected folder as though the folders below do not exist.



Multi-Device Firmware Update—Transfers a firmware update file to multiple devices in the selected folder.


NOTE: If the *All Devices View* is enabled, all targeted devices below the selected folder receive the update file.



Grid View, Compact Detail View, and Alternate Detail View—Three distinct views of the devices in the selected folder.

Devices

Select a device in the site layout (left pane) to display basic information for the device (see [Figure 6](#)).

- Click the  REFRESH button to update the displayed information.
- Click the **VIEW CONFIGURATION** button to update the information displayed.
- Click the **CONNECT AND CONFIGURE** button to log into the device and configure it (see the [Device Access](#) section).
- Click the **REBOOT DEVICE** button to restart the currently selected device.

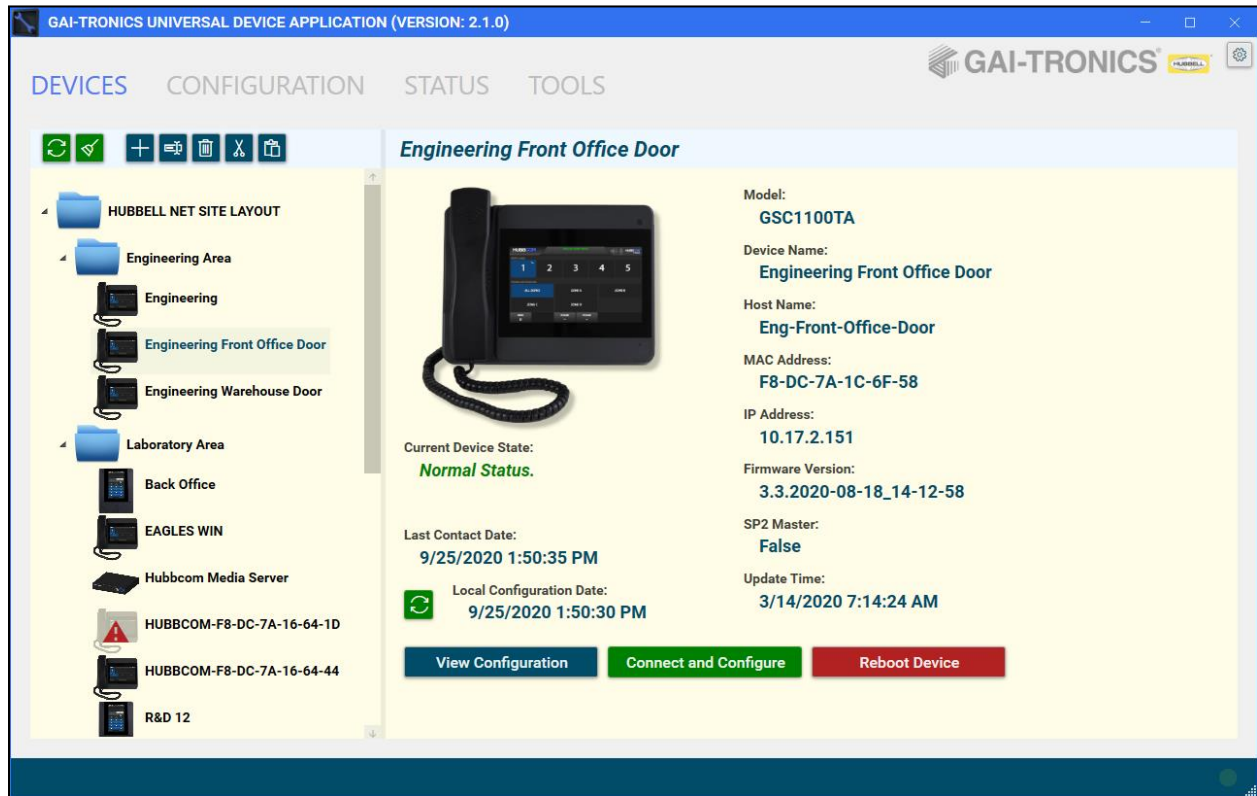


Figure 6. Selected Device View

Device Access

1. Double click a device or select a device and click the **CONNECT AND CONFIGURE** button to access the device's configuration.

NOTE: The VIEW CONFIGURATION button allows viewing the last received *Local Configuration* without connecting to the unit. The data is read-only.

The device login screen appears:

The 'Device Login' screen displays the device ID 'HUBBCOM-F8-DC-7A-1C-6F-39'. Below the ID are two input fields: 'User Name:' and 'Password:'. At the bottom of the screen are two buttons: 'Cancel' and 'LOGIN'.

Figure 7. Device Login

2. Enter the user ID and password and click the LOGIN button.

The default factory assigned username and password are:

- User Name: *gai-tronics*
- Password: *pageparty*

A prompt to change the default user name and password appear upon first login to each device.

3. Enter a new user name and password and click the CHANGE PASSWORD button.

The Unit Configuration tab displays:

Device Configuration

Refer to the following documents to configure the relevant device. GAI-Tronics documentation are on the GAI-Tronics website at <https://www.gai-tronics.com>.

HUBCOM Desktop/Wall-Mount and Flush-Mount Smart Controllers, Models: GSC1100, GSC2100, GSC3100, and GSC4100:

HUBBCOM™ Device Configuration Guide42004-551

Access Control Card Management (TOOLS tab)

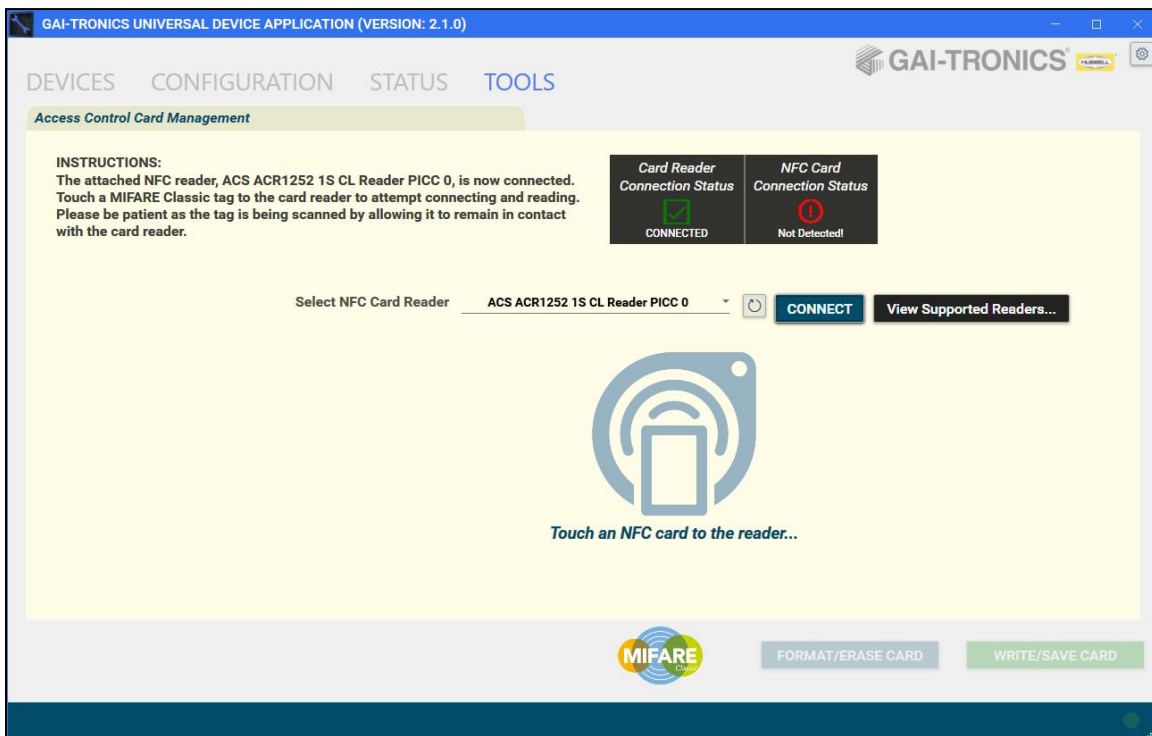


Figure 8. GUDA Tools Tab

1. Attach a supported NFC reader.
Click the VIEW SUPPORTED READERS... button to display a list of supported NFC devices.
2. Provision any MIFARE Classic 1K NFC card for access control with a supported HUBBCOM unit.