

CONNECTORS






EXPLOSIONPROOF STARLINE

FEATURES • GROUND POWER & AIRCRAFT CONNECTORS



Ratings & Certifications:

-  **Class I, Groups C & D. 480VAC, 60/400 Hz, Circuit-Breaking.**
-  **Class I, Groups B, C & D and Class II, Groups F & G 600VAC, 60/400 Hz, Circuit-Breaking.**
-  **II 2 G D , Ex d IIB + H2 IP66/67 T70 KEMA04ATEX2179X 50/60/400 Hz; 1000VAC, 500VDC**

Hangar Ground Power Receptacle

Vantage Ground Power receptacles mount flush into the concrete deck of an aircraft hangar or service apron. Cast from nodular iron for increased strength and durability, each unit is available with one or two power receptacles mounted in the intermediate cover. Power receptacles are rated at 30, 60, 100 or 200 amps at 50/60/400 Hz.

- Single or duplex receptacle combinations available
- Explosionproof pushbuttons and pilot lights for point-of-use control.
- Color coded covers and conduit entries to customer specifications.
- Unique drainage system prevents pooling around the receptacle.



ADDITIONAL CONNECTORS FOR THE AIRCRAFT INDUSTRY



Receptacles for Hangar Service Pits

Hangar pits and service outlets allow military and commercial airline operators to position electrical power in the hangar floor convenient to aircraft scheduled for maintenance. Equipped with power and/or control circuits, maintenance crews can easily use the pit receptacle to hook up portable equipment or bring power directly to the aircraft.

Receptacles for Aircraft Test Stands:

Test stands for the 767 and C5A airplanes require 30 amp, 480 VAC, 4 pole 5 wire explosion proof connectors. Panel Mount style receptacles are used to safely bring power to and from various test stand enclosures. Supplied with a flat gasket to maintain the purge within the enclosure, Panel Mount receptacles are also pre-wired and factory sealed, requiring no external seal fittings. Optional color coding and alternate keyed inserts ensure proper mating.



Receptacles for Hangar Bulkhead Mounting & Aircraft Cable Assemblies

Vantage connectors safely make and break under full rated load in the presence of jet fuel vapor and other hazardous gases. GDT connectors come complete with E & F relay pins for electrical interlock and are ideal for high ampere hangar applications rated Class I, Division 1. We combine Vantage explosionproof connectors and MS rubber-molded connectors to fabricate 400Hz Ground Support assemblies. Utilizing the E and F relay pins to create an electrical interlock, these flexible assemblies supply power directly to aircraft, mobile carts and frequency converters.



PART NUMBERS GROUND POWER

SINGLE RECEPTACLE GDS - D5L1 - 92ANMEQP

Of the many available variations we selected above example:

- GD = Class I, Division 1, Groups C-D;
- S = Red/Amber pilot lights and on/off switches;
- D5L1 = 200/260 amp, 5P 6W, 60/400 hertz keyed in the 01 position;
- 92 = single;
- ANM = Side A - 3.0" and 2.5";
- EQP = Side E - 4.0" and 3.5".

For additional part numbers see Single code logic on page CN75.
Mating plugs are listed on page CN47.

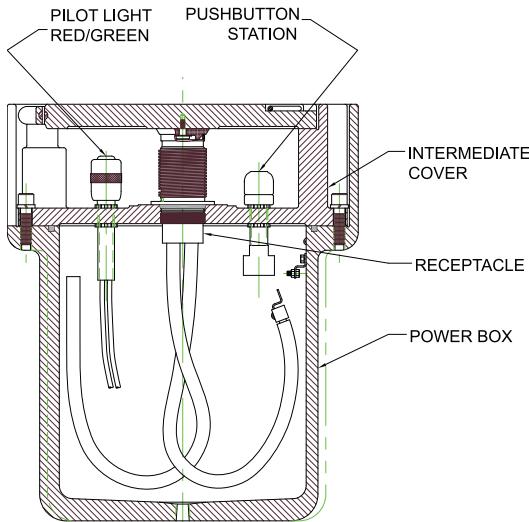
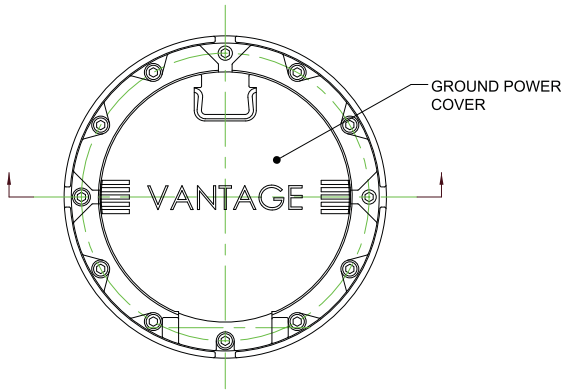
DUPLEX RECEPTACLE GD - A1B3 - 93B68DMN

There are hundreds of variations and we selected the above example:

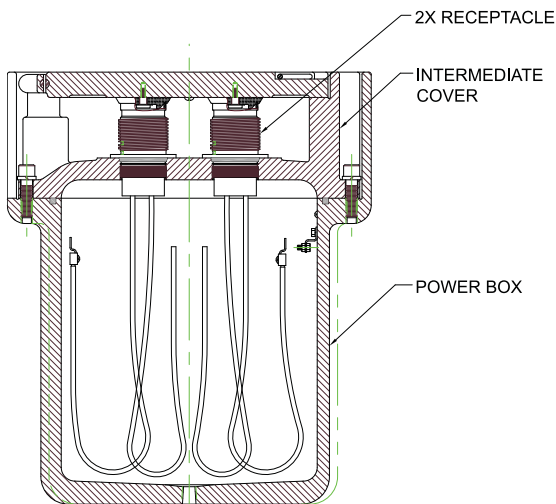
- GD = Class I, Division 1, Groups C-D;
- A1 = 30/32 amp, 2P 3W, 60/400 hertz;
- B3 = 60/63 amp, 3P 4W, 60/400 hertz;
- 93 = duplex;
- B68 = Side B - 1.0" and 1.5";
- DMN = Side D - 2.5" and 3.0".

For additional part numbers see Duplex code logic on page CN76.
Mating plugs are listed on page CN47.

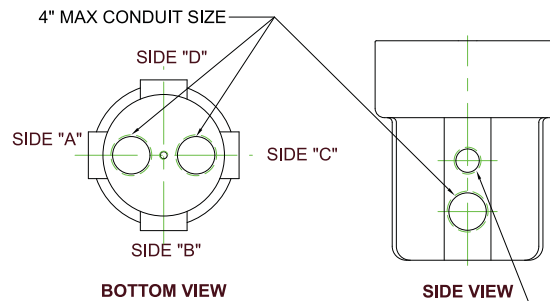
AMPS		INSERT 600/1000 VAC, 60/400 HZ	INSERT SYMBOL	RECEPTACLE ASSEMBLY
30	32	2 Pole 3 Wire	A1	GD-1716-51SL-L36
		3 Pole 4 Wire	A2	GD-1716-23SL-L36
		4 Pole 5 Wire	B1	GD-1720-36SL-L36
60	63	2 Pole 3 Wire	B2	GD-1720-61SL-L36
		3 Pole 4 Wire	B3	GD-1720-40SL-L36
		4 Pole 5 Wire	C1	GD-1724-29SL-L36
100	125	2 Pole 3 Wire	C2	GD-1724-60SL-L36
		3 Pole 4 Wire	C3	GD-1724-39SL-L36
		4 Pole 5 Wire	D1	GD-1728-23SL-L36
200	260	2 Pole 3 Wire	D3	GD-1728-30SL-L36
		3 Pole 4 Wire	D4	GDU-1728-31SL-L36
		5 Pole 6 Wire	D5	GDT-1728-42SL-L36



SINGLE



DUPLEX



MAX DIA OF SECOND CONDUIT TAP IN SIDE WALL IS 2 1/2"