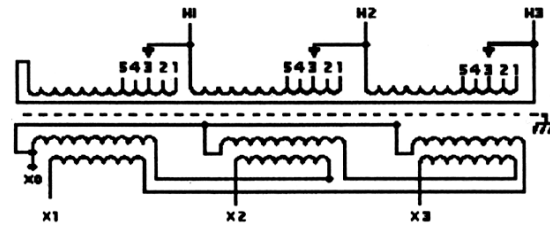
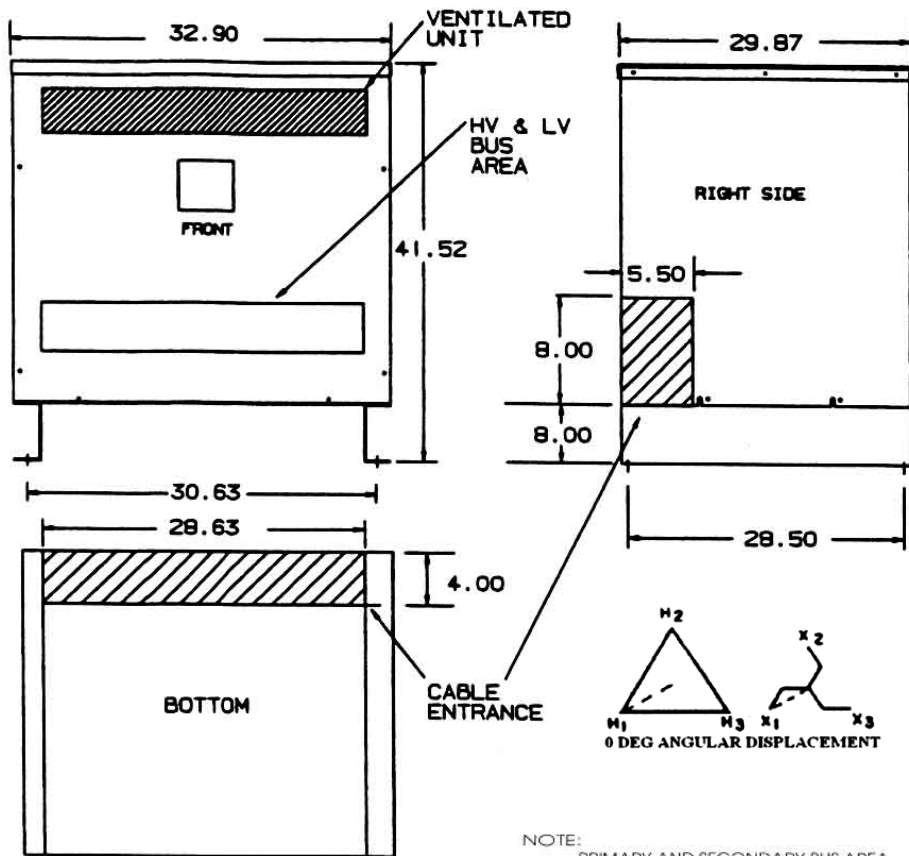


Revisions



PRIMARY VOLTS	%	CONNECT LEADS TO TAP NO.
504	105	1
492	102.5	2
480	100	3
468	97.5	4
456	95	5

PRIMARY LINES TO H1-H2-H3,
SECONDARY LINES TO X0-X1-X2-X3
CAUTION: KEEP 3 TAP CONNECTIONS IN SAME POSITION WHEN TRANSFORMER IS IN OPERATION

NOTE: PRIMARY AND SECONDARY BUS AREA IN FRONT OF CASE.

KEY: DENOTES CONDUIT AREAS



Type No. CMTI533174S

Weather Shield – WS-A-4

KVA	CATALOG NUMBER	VOLTAGE		Windings	WEIGHT	PHASE	FREQ.
		HIGH	LOW				
225	CMTI533174S	480Δ	208Y/120	CU	1970 Lbs	3φ	60 Hz

TYPICAL PERFORMANCE DATA

Winding Rise	150°C
Insulation	220°C
Sound Level	55 dB

Regulation @ 100% PF	0.174%
----------------------	--------

Impedance	3.201%
-----------	--------

Typical Efficiency	98.36%
No Load Losses	605 W
Full Load Losses	3740 W