

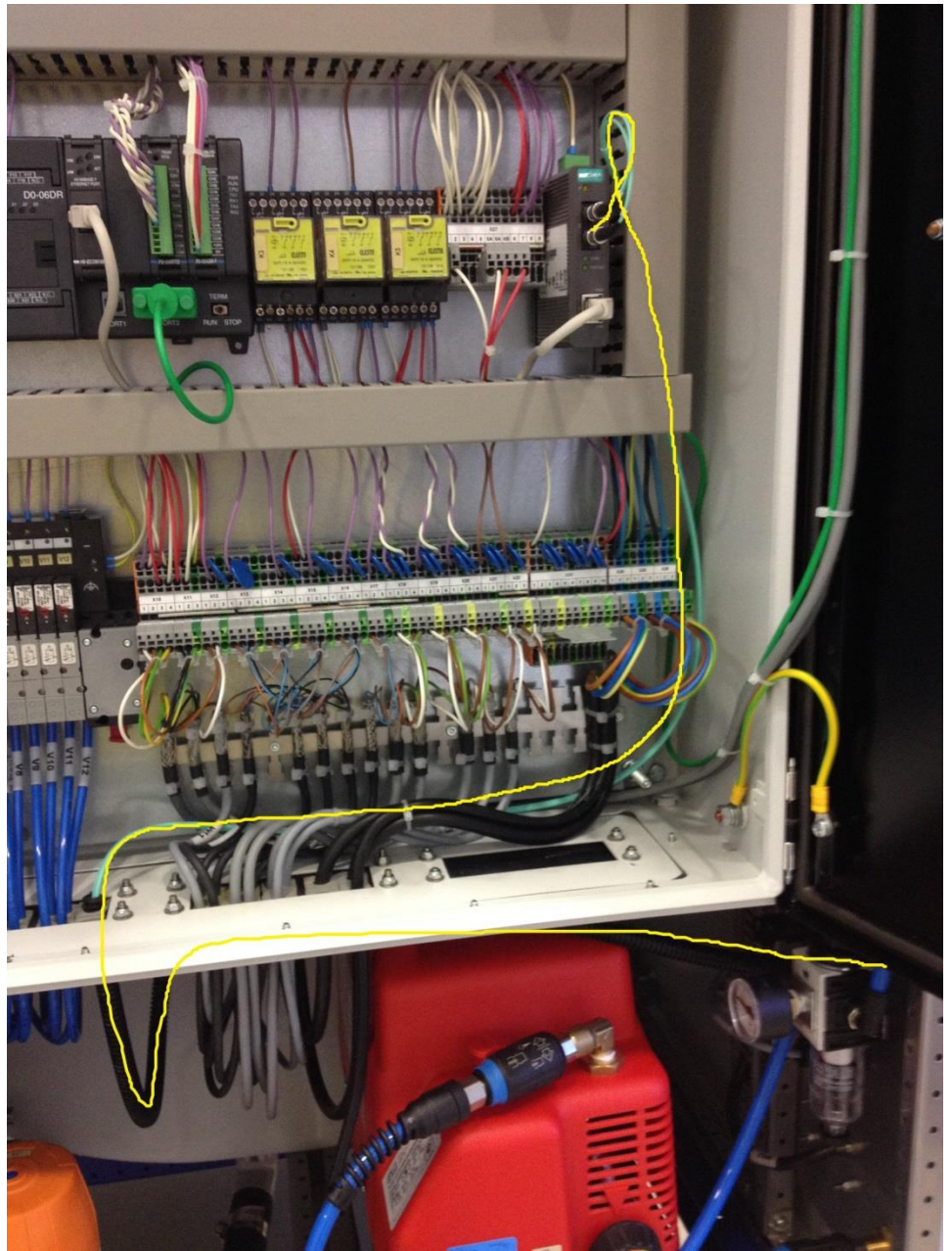
How to replace the LWL cables at the WPU

Required Parts:

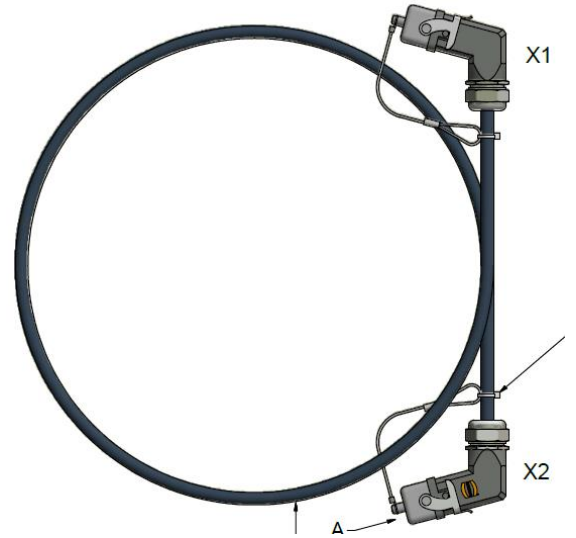
1. SAP No. 4844011; LWL Cable WPU Cabinet internal 2m SC-ST
2. SAP No. 4844029; LWL Cable WPU Cabinet – Remote Panel 50m 4Pol
3. SAP No. 4844008; LWL Cable WPU Remote Panel internal 0.5m SC-ST

Required Work:

As first you need to remove the old LWL cable in the WPU cabinet and replace it by the new one. I marked the path of the LWL cable in yellow on the picture the cable is turquoise.



The Cable between the WPU Cabinet and the Remote Panel will be delivered as a preassembled part there you don't need to do anything. Just be careful with the Plugs they often have protection cups on the LWL phases which need to be removed before plugged in.



Also the LWL cable inside the remote Panel needs to be replaced, for this it should be enough to open it on one side and replace the cable. The cable is marked yellow in the picture.

