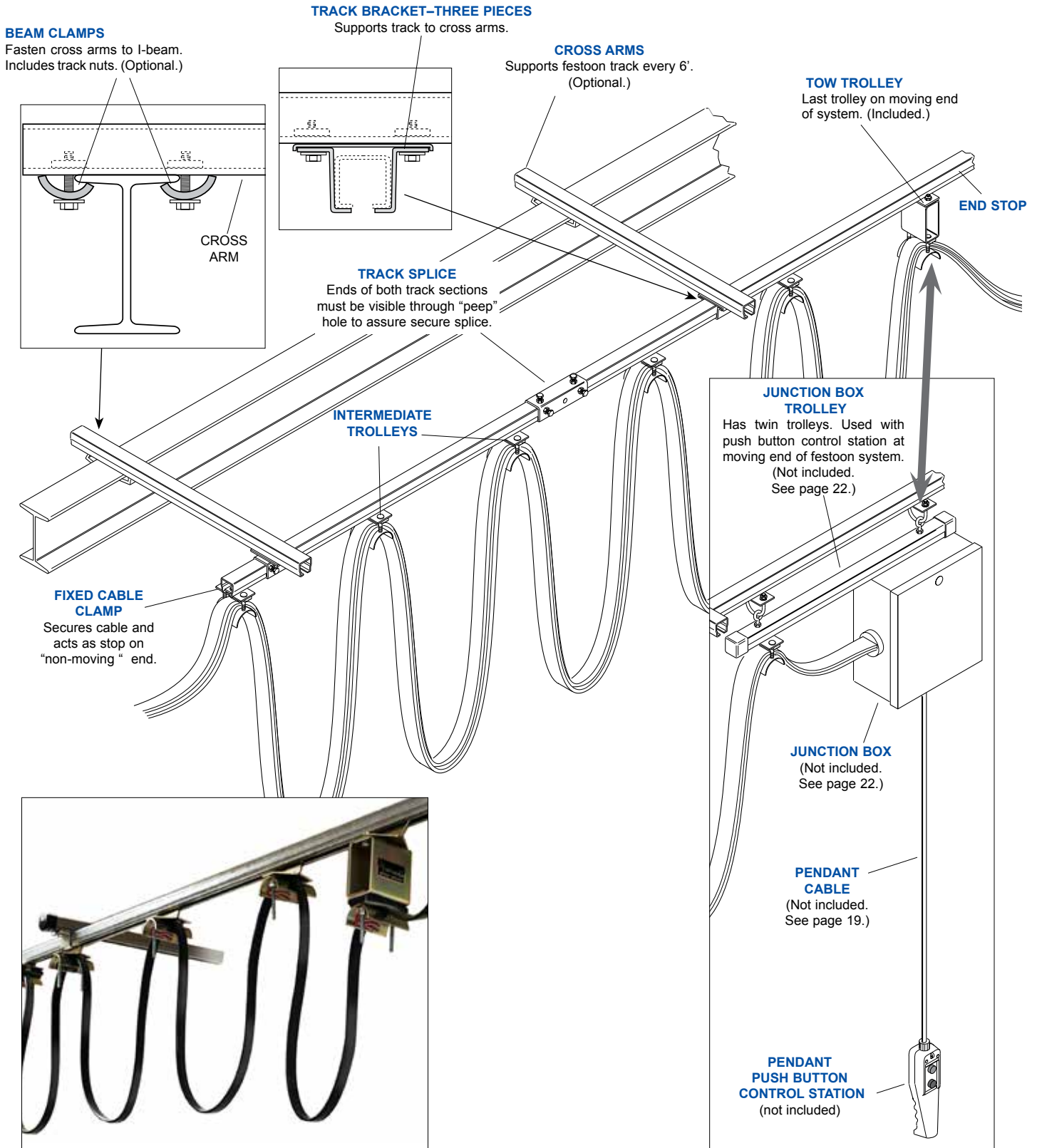


STEEL TRACK FESTOON SYSTEM KITS

Install a high speed, smooth operating festoon system on an overhead crane or similar application. Kits include all required parts - track, trolleys, and mounting clamps. Refer to model charts on following pages for system lengths and cables available.



C-Rail Festoon Kits

SELECTING

STEP 1 - Choose a kit number below considering the active travel distance you require (AT) and allowable loop depth (30, etc.).

STEP 2 - To complete kit number, add loop depth (LD) (and cable O.D. code for Type "CR" round kits).

STEP 3 - Order optional components, including flat or round cable.



CABLE NOT INCLUDED
ORDER CABLE AND CONNECTORS ON PAGE 23

Series "CF" kits for FLAT CABLE

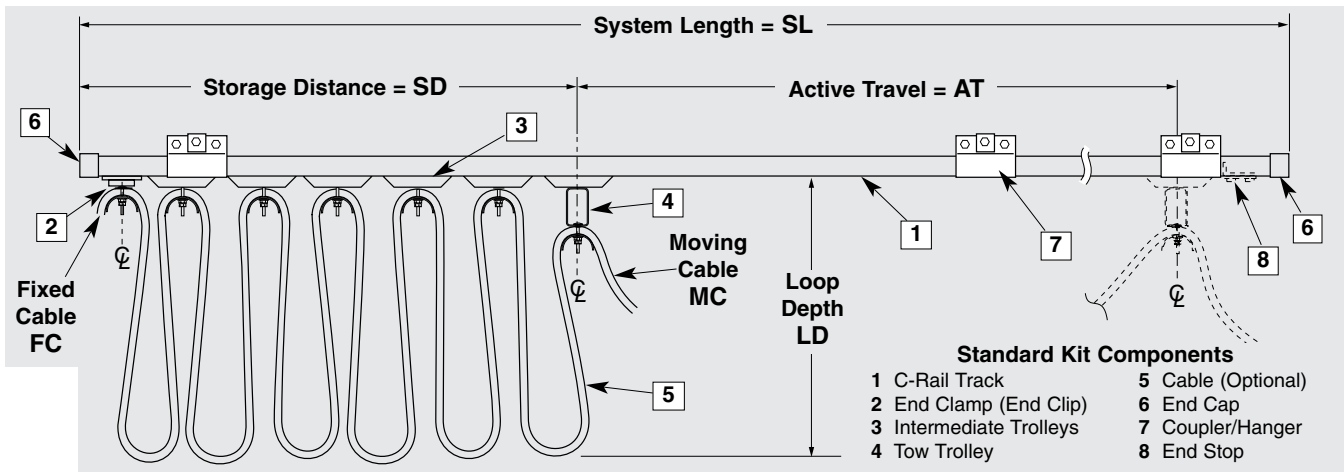
KIT NUMBER	30 LOOP DEPTH IN INCHES				36 LOOP DEPTH IN INCHES				42 LOOP DEPTH IN INCHES				48 LOOP DEPTH IN INCHES			
	AT ft.-in.	SD ft.-in.	SL* ft.-in.	Active Cable ft.**	AT ft.-in.	SD ft.-in.	SL* ft.-in.	Active Cable ft.**	AT ft.-in.	SD ft.-in.	SL* ft.-in.	Active Cable ft.**	AT ft.-in.	SD ft.-in.	SL* ft.-in.	Active Cable ft.**
CF-02-___	12-1	1-4	13-10	15	14-10	1-4	16-7	18	17-6	1-4	19-4	21	20-3	1-4	22-1	24
CF-03-___	16-1	1-7	18-2	19	19-9	1-7	21-10	23	23-4	1-7	25-5	27	27-0	1-7	29-1	31
CF-04-___	20-2	1-11	22-6	24	24-8	1-11	27-0	29	29-3	1-11	31-7	34	33-9	1-11	36-1	39
CF-05-___	24-2	2-2	26-9	29	29-8	2-2	32-3	35	35-1	2-2	37-8	41	40-6	2-2	43-2	47
CF-06-___	28-3	2-5	31-1	34	34-7	2-5	37-5	41	40-11	2-5	43-10	48	47-4	2-5	50-2	55
CF-07-___	32-3	2-8	35-5	38	39-6	2-8	42-8	46	46-9	2-8	49-11	54	54-1	2-8	57-3	62
CF-08-___	36-3	3-0	39-8	43	44-6	3-0	47-11	52	52-8	3-0	56-1	61	60-10	3-0	64-3	70
CF-09-___	40-4	3-3	44-0	48	49-5	3-3	53-1	58	58-6	3-3	62-2	68	67-7	3-3	71-3	78
CF-10-___	44-4	3-6	48-4	53	54-4	3-6	58-4	64	64-4	3-6	68-4	75	74-4	3-6	78-4	86
CF-11-___	48-5	3-9	52-7	57	59-4	3-9	63-6	69	70-2	3-9	74-5	81				
CF-12-___	52-5	4-1	56-11	62	64-3	4-1	68-9	75								
CF-13-___	56-6	4-4	61-3	67	69-2	4-4	74-0	81								
CF-14-___	60-6	4-7	65-6	72	74-2	4-7	79-2	87								
CF-15-___	64-6	4-10	69-10	76												
CF-16-___	68-7	5-2	74-2	81												
CF-17-___	72-7	5-5	78-6	86												

Need more?
Longer travel or larger cables? Systems designed for pendant controls or workstations? Additional systems are available. Consult your local distributor for details.

Add LOOP DEPTH (LD)
Flat kit number example:
CF - 04 - 30

*System Length (SL) = Storage Distance (SD) + Active Travel (AT) + 4"-6" for End Stop, End Caps, Etc. System Length shown above is achieved using indicated loop depth and active cable length. System length may be increased by lengthening Active Cable and (1) decreasing loop depth or (2) increasing number of trolleys. C-rail track included in kit is in 6' lengths only and must be field cut to desired System Length.

**Lengths listed are for ACTIVE cable only. If you need hookup cable at fixed end (FC) or moving end (MC) you MUST ADD it when ordering or cutting cable.



Features & Specifications

Trolley Body, Saddles & Clips

Wheels	zinc-plated steel, smooth running ball bearing
Axles	zinc-plated steel
C-Rail Track	roll-formed galvanized steel
Hardware	zinc-plated steel
Active Travel	up to 72 ft (21.6m)*
Trolley Loads	up to 45 lbs/trolley (20.25kg)**
Speed	up to 250 fpm (75mpm)

*Additional kits are available for longer travel. Consult factory for details.

**Designed for cable loads only.

Kits are boxed for parcel delivery shipment and are complete with C-Rail Track, all components and hardware.

Includes: C-Rail, Coupler Hangers, Trolleys, Tow Trolley, End Stop, End Clamp and End Caps.

Cable NOT included.



Series "CR" kits for ROUND CABLE

KIT NUMBER	30 LOOP DEPTH IN INCHES				36 LOOP DEPTH IN INCHES				42 LOOP DEPTH IN INCHES				48 LOOP DEPTH IN INCHES			
	AT ft.-in.	SD ft.-in.	SL* ft.-in.	Active Cable ft.**	AT ft.-in.	SD ft.-in.	SL* ft.-in.	Active Cable ft.**	AT ft.-in.	SD ft.-in.	SL* ft.-in.	Active Cable ft.**	AT ft.-in.	SD ft.-in.	SL* ft.-in.	Active Cable ft.**
CR-02-__-2	10-10	1-4	12-8	17	13-6	1-4	15-3	20	16-1	1-4	17-10	23	18-8	1-4	20-6	26
CR-03-__-2	14-6	1-7	16-7	22	18-0	1-7	20-0	26	21-5	1-7	23-6	30	24-11	1-7	27-0	34
CR-04-__-2	18-2	1-11	20-6	27	22-6	1-11	24-10	32	26-10	1-11	29-2	37	31-2	1-11	33-6	42
CR-05-__-2	21-9	2-2	24-4	33	27-0	2-2	29-7	39	32-2	2-2	34-9	45	37-5	2-2	40-0	51
CR-06-__-2	25-5	2-5	28-3	38	31-6	2-5	34-4	45	37-7	2-5	40-5	52	43-8	2-5	46-6	59
CR-07-__-2	29-0	2-8	32-2	43	36-0	2-8	39-1	51	42-11	2-8	46-1	59	49-10	2-8	53-0	67
CR-08-__-2	32-8	3-0	36-1	49	40-6	3-0	43-11	58	48-3	3-0	51-8	67	56-1	3-0	59-6	76
CR-09-__-2	36-4	3-3	40-0	54	45-0	3-3	48-8	64	53-8	3-3	57-4	74	62-4	3-3	66-0	84
CR-10-__-2	39-11	3-6	43-11	59	49-6	3-6	53-5	70	59-0	3-6	63-0	81	68-7	3-6	72-7	92
CR-11-__-2	43-7	3-9	47-10	65	54-0	3-9	58-2	77	64-5	3-9	68-8	89	74-10	3-9	79-1	101
CR-12-__-2	47-2	4-1	51-8	70	58-6	4-1	63-0	83	69-9	4-1	74-3	96				
CR-13-__-2	50-10	4-4	55-7	75	63-0	4-4	67-9	89	75-2	4-4	79-11	103				
CR-14-__-2	54-6	4-7	69-6	81	67-6	4-7	72-6	96								
CR-15-__-2	58-1	4-10	63-5	86	72-0	4-10	77-4	102								
CR-16-__-2	61-9	5-2	67-4	91												
CR-17-__-2	65-4	5-5	71-3	97												
CR-18-__-2	69-0	5-8	75-1	102												
CR-19-__-2	72-8	5-11	79-0	108												

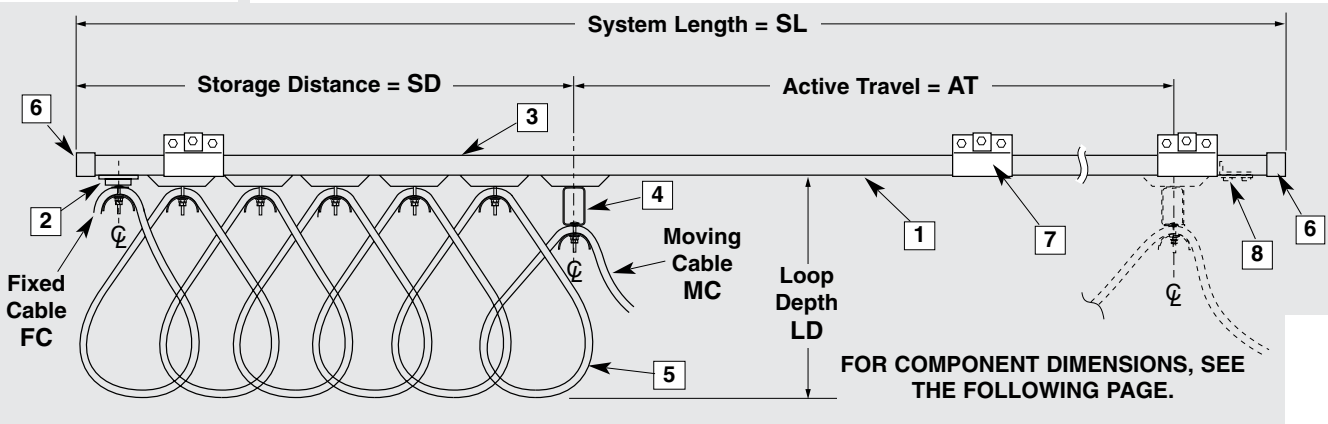
Need more?
Longer travel or larger cables? Systems designed for pendant controls or workstations? Additional systems are available. Consult your local distributor for details.

Standard Series CR Kits have saddle for O.D. range 0.60" - 0.94" (typical 3/8" I.D. hose). If optional saddle with O.D. range of 0.31" - 0.59" is desired, substitute "1" for "2" as last digit of model number. **Example:** CR-2-30-1

Add LOOP DEPTH (LD) Round kit number example: CR - 04 - 30 - 2

*System Length (SL) = Storage Distance (SD) + Active Travel (AT) + 4"-6" for End Stop, End Caps, Etc. See note previous page. C-rail track included in kit is in 6' lengths only and must be field cut to desired System Length.

**Lengths listed are for ACTIVE cable only. If you need hookup cable at fixed end (FC) or moving end (MC) you MUST ADD it when ordering or cutting cable.

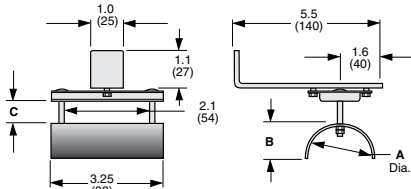


FOR COMPONENT DIMENSIONS, SEE THE FOLLOWING PAGE.

ADD TO C-RAIL FESTOON KITS SHOWN ON PRECEDING PAGES

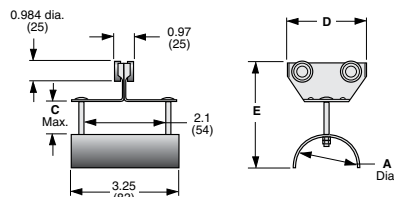
COMPONENTS - C-Rail Festoon

For FLAT Cable



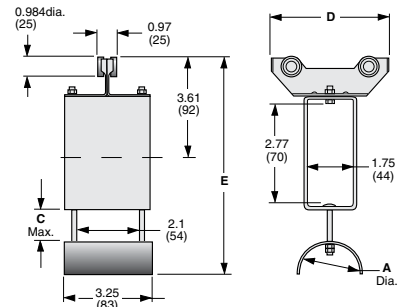
FLAT CABLE END CLAMP

Model No.	A in. (mm)	B in. (mm)	C in. (mm)	Wt. lbs. (Kg)
C35-FE-02	2.00 (51)	1.00 (25)	1.50 (38)	1.46 (.66)
C35-FE-03	3.12 (80)	1.56 (40)	0.94 (24)	1.63 (.73)



FLAT CABLE INTERMEDIATE TROLLEYS

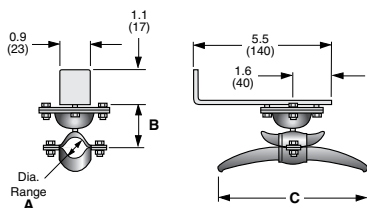
Model No.	A in. (mm)	C in. (mm)	D in. (mm)	E in. (mm)	Wt. lbs. (Kg)
C35-FC-32	2.00 (51)	0.56 (14)	3.12 (79)	3.72 (94)	0.84 (.38)
C35-FC-52	2.00 (51)	1.50 (38)	5.00 (127)	4.76 (121)	0.94 (.42)
C35-FC-53	3.12 (80)	0.94 (24)	5.00 (127)	4.31 (109)	1.11 (.50)



FLAT CABLE TOW TROLLEY

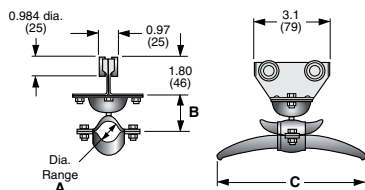
Model No.	A in. (mm)	C in. (mm)	D in. (mm)	E in. (mm)	Wt. lbs. (Kg)
C35-FT-52	2.00 (51)	1.50 (38)	5.00 (127)	8.18 (208)	2.38 (1.07)
C35-FT-53	3.12 (80)	0.94 (24)	5.00 (127)	8.18 (208)	2.45 (1.10)

For ROUND Cable or Hose



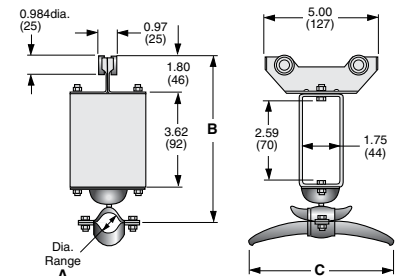
ROUND CABLE/HOSE END CLAMP

Model No.	A in. (mm)	B in. (mm)	C in. (mm)	Wt. lbs. (Kg)
C35-RE-11	0.31-0.59 (8-15)	1.10 (28)	2.75 (70)	1.41 (.63)
C35-RE-12	0.60-0.94 (15-24)	1.25 (32)	3.86 (98)	1.53 (.69)
C35-RE-13	0.95-1.25 (24-32)	1.47 (37)	5.59 (142)	1.85 (.83)



ROUND CABLE/HOSE INTERMEDIATE TROLLEY

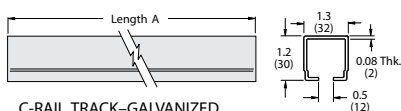
Model No.	A in. (mm)	B in. (mm)	C in. (mm)	Wt. lbs. (Kg)
C35-RC-11	0.31-0.59 (8-15)	1.10 (28)	2.75 (70)	1.41 (.63)
C35-RC-12	0.60-0.94 (15-24)	1.25 (32)	3.86 (98)	1.53 (.69)
C35-RC-13	0.95-1.25 (24-32)	1.47 (37)	5.59 (142)	1.85 (.83)



ROUND CABLE/HOSE TOW TROLLEY

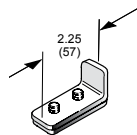
Model No.	A in. (mm)	B in. (mm)	C in. (mm)	Wt. lbs. (Kg)
C35-RT-11	0.31-0.59 (8-15)	6.50 (165)	2.75 (70)	2.33 (1.05)
C35-RT-12	0.60-0.94 (15-24)	6.70 (170)	3.86 (98)	2.45 (1.10)
C35-RT-13	0.95-1.25 (24-32)	6.92 (176)	5.59 (142)	2.77 (1.25)

ACCESSORIES

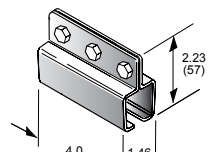


C-RAIL TRACK-GALVANIZED

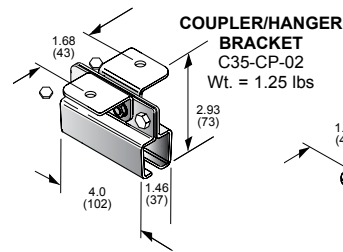
Model No.	A ft. (m)	Wt. lbs. (Kg)
C35-TR-06	6 (1.8)	6.3 (2.84)
C35-TR-12	12 (3.6)	12.6 (5.67)
C35-TR-18	18 (5.4)	18.9 (8.51)



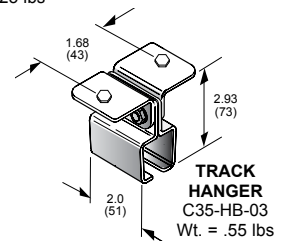
END STOP WS30-ES
Wt. = 0.3 lbs



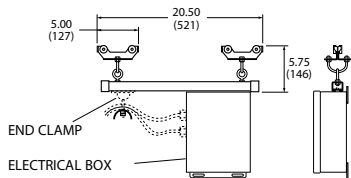
TRACK COUPLER C35-CP-01
Weight = 1.0 lbs



COUPLER/HANGER BRACKET C35-CP-02
Wt. = 1.25 lbs



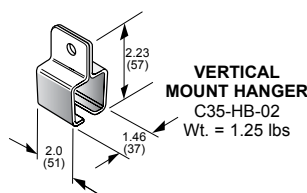
TRACK HANGER C35-HB-03
Wt. = .55 lbs



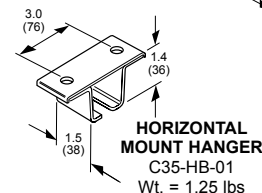
CONTROL UNIT ASSEMBLY WITH 2 TROLLEYS

Model No.	Wt. lbs. (Kg)
C35-UN-01	4.00 (1.8)
C35-UN-02	8.00 (3.6)

Order End Clamp and Glands separately.



VERTICAL MOUNT HANGER C35-HB-02
Wt. = 1.25 lbs



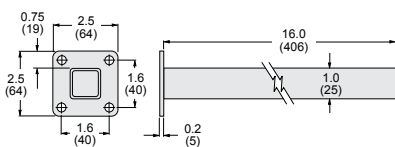
HORIZONTAL MOUNT HANGER C35-HB-01
Wt. = 1.25 lbs



BEAM CLAMP C35-BCA
Wt. = 0.34 lbs

TOW ARM

Attaches to your machine and inserts into Tow Trolley to tow the system.



DESCRIPTION	WGT lb. (kg)	MODEL NUMBER
TOW ARM	1.3 (59)	CTA-01

FLAT-TO-ROUND CABLE CONNECTOR SET



DESCRIPTION	MODEL NUMBER
Set of 2 Locking Plugs	LC-01

Go quickly and safely from flat to round cable. Consists of one each male and female plugs designed to accept flat or round cable and lock together securely. Plugs are 3-pole, 4-wire plus ground and will accommodate round cable sizes #14 AWG through #10 AWG; flat cable up to 1.00" wide. Ratings: 20 amp, 480 volt, 3 phase. NEMA configuration #L16-20. Plugs are double-insulated plastic and resist impact, corrosion and most chemicals.

Kellems® Deluxe Cord Grips for Strain Relief



Aluminum Fittings, Stainless Steel Mesh, Liquidtight, for Insulated Cables



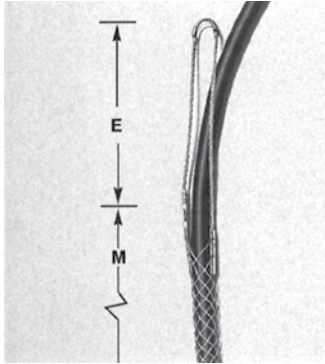
Grip Diameter Range		Threat Size NPT In.	Form Size	Model No.
In.	(cm)			
0.250–0.312	(.63–.79)	3/8"	F1	CGD-1001
0.312–0.375	(.79–.95)			CGD-1002
0.375–0.437	(.95–1.11)			CGD-1003
0.187–0.250	(.47–.63)	1/2"	F2	CGD-1004
0.250–0.375	(.63–.95)			CGD-1006
0.375–0.500	(.95–1.27)			CGD-1008
0.500–0.625	(1.27–1.59)			CGD-1010
0.625–0.750	(1.59–1.90)	1/2"	F3	CGD-11247
0.750–0.875	(1.90–2.22)			CGD-11248
0.187–0.250	(.47–.63)	3/4"	F2	CGD-1011
0.250–0.375	(.63–.95)			CGD-1013
0.375–0.500	(.95–1.27)			CGD-1015
0.500–0.625	(1.27–1.59)			CGD-1017
0.625–0.750	(1.59–1.90)	3/4"	F3	CGD-1018
0.750–0.875	(1.90–2.22)			CGD-11249
0.375–0.500	(.95–1.27)	1"	F4	CGD-11195
0.500–0.625	(1.27–1.59)			CGD-1019
0.625–0.750	(1.59–1.90)			CGD-1021
0.750–0.875	(1.90–2.22)			CGD-1023
0.875–1.000	(2.22–2.54)			CGD-1025
1.000–1.125	(2.54–2.86)			CGD-11250
1.125–1.250	(2.86–3.17)			CGD-11028
1.250–1.375	(3.17–3.49)	CGD-11029		
0.750–0.875	(1.90–2.22)	1 1/4"	F5	CGD-11251
0.875–1.000	(2.22–2.54)			CGD-1026
1.000–1.125	(2.54–2.86)			CGD-1027
1.125–1.250	(2.86–3.17)			CGD-1028
1.250–1.375	(3.17–3.49)			CGD-11178
0.750–0.875	(1.90–2.22)	1 1/2"	F5	CGD-11252
0.875–1.000	(2.22–2.54)			CGD-1029
1.000–1.125	(2.54–2.86)			CGD-1030
1.125–1.250	(2.86–3.17)			CGD-1031
1.250–1.375	(3.17–3.49)			CGD-1032
1.312–1.437	(3.33–3.65)	1 1/2"	F6	CGD-11253
1.437–1.562	(3.65–3.97)			CGD-11254
1.562–1.687	(3.97–4.28)			CGD-11255
1.687–1.812	(4.28–4.60)			CGD-11256
1.750–1.875	(4.44–4.76)			CGD-11257

Note: Kellems® Deluxe Cord Grips are suitable for use in hazardous locations per Class I Div. 2, Class II Div. 1 & 2, Class III Div. 1 & 2 of the National Electric Code Sections 501.10(b)(2), 502.10(a)(2), 502.10(b)(2), 503.10(a)(2) and 503.10(b).

*Cable jacket may have to be stripped to pass through connector body.

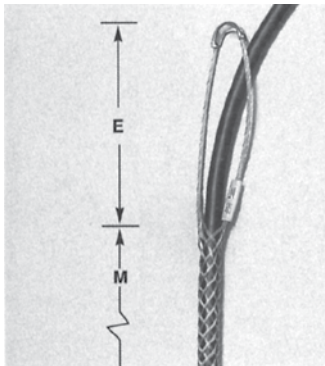
Kellems® Support Grips

Permanent support when cable end is available for grip installation



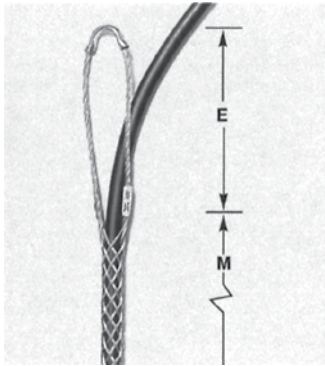
Service Drop-Light Duty, Single Eye, Closed Mesh

Cable Diameter Range Range-Inches (mm)	Approx. Breaking Strength Lbs. (N)	E In. (cm)	M In. (mm)	Model No.
0.23-0.31 (6-8)	290 (1,290)	3 (76)	3.75 (95)	CG-16001
0.29-0.37 (7-9)	290 (1,290)	4 (102)	4.25 (108)	CG-16002
0.35-0.44 (9-11)	500 (2,224)	4 (102)	4.75 (121)	CG-16003
0.41-0.50 (10-13)	500 (2,224)	5 (127)	5.00 (127)	CG-16004
0.46-0.56 (12-14)	660 (2,936)	6 (152)	5.25 (133)	CG-16005
0.52-0.62 (13-16)	790 (3,514)	7 (178)	6.25 (159)	CG-16006
0.58-0.68 (15-17)	790 (3,514)	7 (178)	6.50 (165)	CG-16007
0.64-0.75 (16-19)	790 (3,514)	7 (178)	6.75 (171)	CG-16008
0.70-0.81 (18-21)	790 (3,514)	7 (178)	7.25 (184)	CG-16009
0.75-0.87 19-22)	1,020 (4,537)	8 (203)	8.00 (203)	CG-16010
0.81-0.94 (21-24)	1,020 (4,537)	8 (203)	8.25 (210)	CG-16011
0.87-1.00 (22-25)	1,020 (4,537)	8 (203)	8.75 (222)	CG-16012
0.94-1.06 (24-27)	1,020 (4,537)	9 (229)	9.00 (229)	CG-16013
1.00-1.18 (25-30)	1,020 (4,537)	9 (229)	9.50 (241)	CG-16014
1.06-1.25 (27-32)	1,020 (4,537)	9 (229)	9.50 (241)	CG-16015



Service Drop-Heavy Duty, Single Eye, Closed Mesh

Cable Diameter Range Range-Inches (mm)	Approx. Breaking Strength Lbs. (N)	E In. (cm)	M In. (mm)	Model No.
0.23-0.31 (6-8)	500 (2,224)	5 (127)	4.50 (114)	CG-17001
0.29-0.37 (7-9)	500 (2,224)	5 (127)	5.50 (140)	CG-17002
0.35-0.44 (9-11)	870 (3,870)	6 (152)	6.50 (165)	CG-17003
0.41-0.50 (10-13)	870 (3,870)	6 (152)	7.50 (191)	CG-17004
0.46-0.56 (12-14)	1,050 (4,670)	6 (152)	8.00 (203)	CG-17005
0.52-0.62 (13-16)	1,050 (4,670)	7 (178)	8.50 (216)	CG-17006
0.58-0.68 (15-17)	1,050 (4,670)	7 (178)	9.50 (241)	CG-17007
0.64-0.75 (16-19)	1,390 (6,183)	7 (178)	9.50 (241)	CG-17008
0.70-0.81 (18-21)	1,390 (6,183)	8 (203)	10.50 (267)	CG-17009
0.75-0.87 19-22)	1,390 (6,183)	8 (203)	10.50 (267)	CG-17010
0.81-0.94 (21-24)	1,390 (6,183)	8 (203)	10.50 (267)	CG-17011
0.87-1.00 (22-25)	1,790 (7,962)	8 (203)	11.50 (292)	CG-17012
0.94-1.06 (24-27)	1,790 (7,962)	9 (229)	12.50 (318)	CG-17013
1.00-1.18 (25-30)	1,790 (7,962)	9 (229)	13.50 (343)	CG-17014
1.06-1.25 (27-32)	1,790 (7,962)	9 (229)	14.50 (368)	CG-17015

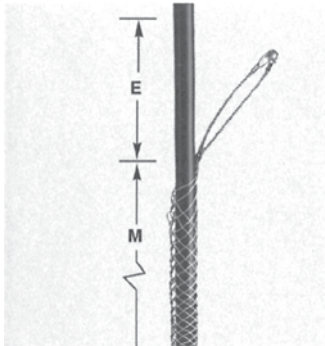


Support-Standard Duty, Single Eye, Closed Mesh

Cable Diameter Range Range-Inches (mm)	Approx. Breaking Strength Lbs. (N)	E In. (cm)	M In. (mm)	Model No.
0.50-0.62 (13-16)	530 (2,357)	7 (178)	10 (254)	CG-01013
0.63-0.74 (16-19)	790 (3,514)	8 (203)	10 (254)	CG-01014
0.75-0.99 (19-25)	1,020 (4,537)	8 (203)	13 (330)	CG-01015
1.00-1.24 (25-32)	1,610 (7,161)	9 (229)	14 (356)	CG-01017
1.25-1.49 (32-38)	1,610 (7,161)	10 (254)	15 (381)	CG-01018
1.50-1.74 (38-44)	1,610 (7,161)	12 (305)	17 (432)	CG-01019
1.75-1.99 (44-51)	2,150 (9,563)	14 (356)	19 (483)	CG-01020

Support-Heavy Duty, Single Eye, Closed Mesh

Cable Diameter Range Range-Inches (mm)	Approx. Breaking Strength Lbs. (N)	E In. (cm)	M In. (mm)	Model No.
0.75-0.99 (19-25)	2,820 (12,543)	10 (254)	25 (635)	CG-06010
1.00-1.24 (25-32)	4,280 (19,037)	10 (254)	28 (711)	CG-06011
1.25-1.49 (32-38)	4,280 (19,037)	10 (254)	30 (762)	CG-06012
1.50-1.99 (38-51)	4,280 (19,037)	10 (254)	34 (864)	CG-06013



Support-Standard Duty, Offset Eye, Closed Mesh

Cable Diameter Range Range-Inches (mm)	Approx. Breaking Strength Lbs. (N)	E In. (cm)	M In. (mm)	Model No.
0.50-0.62 (13-16)	500 (2,224)	4 (102)	10 (254)	CG-01037
0.63-0.74 (16-19)	750 (3,336)	4 (102)	10 (254)	CG-01038
0.75-0.99 (19-25)	950 (4,226)	4 (102)	13 (330)	CG-01039
1.00-1.24 (25-32)	1,500 (6,672)	5 (127)	14 (356)	CG-01041
1.25-1.49 (32-38)	1,500 (6,672)	5 (127)	15 (381)	CG-01042
1.50-1.74 (38-44)	1,500 (6,672)	5 (127)	17 (432)	CG-01043
1.75-1.99 (44-51)	2,000 (8,896)	6 (152)	19 (483)	CG-01044

NEMA 12 Electrical Boxes

Continuous hinge. Provides protection from dirt, dust, oil and water.



Construction

- Heavy 14 gauge steel
- Continuously welded seams
- Closed-cell neoprene gasket
- External mounting feet
- Panel included
- Weldnuts provided for mounting panel
- External screw clamps are quick and easy to operate
- Grounding kit provided
- Furnished without knockouts

Finish

ANSI-61 gray polyester powder inside and out over phosphatised surfaces. Panels are painted white polyester powder.

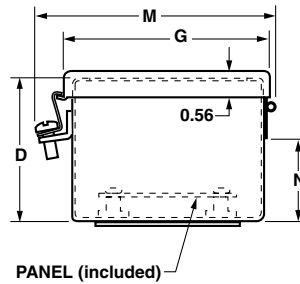
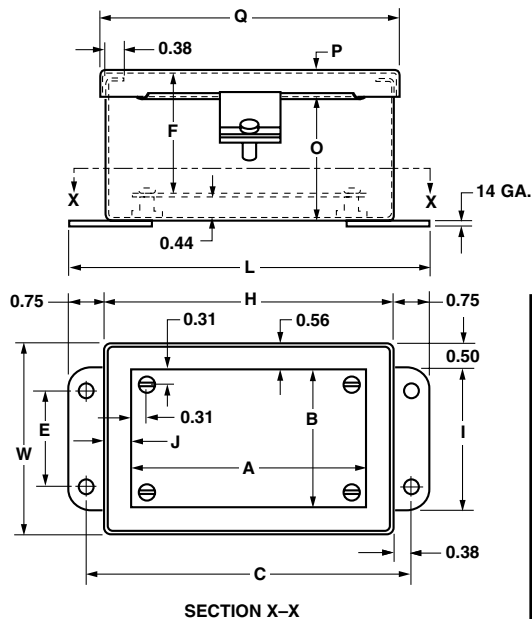
Listings

- UL 50 Listed, Types 12 & 13
- CSA Certified, Types 12 & 13
- Meets NEMA/EEMAC Type 12 & 13 requirements
- JIC EL - 1 - 71

Application: Designed for use as instrument housings, electrical control enclosures, terminal wiring boxes or electrical junction boxes.

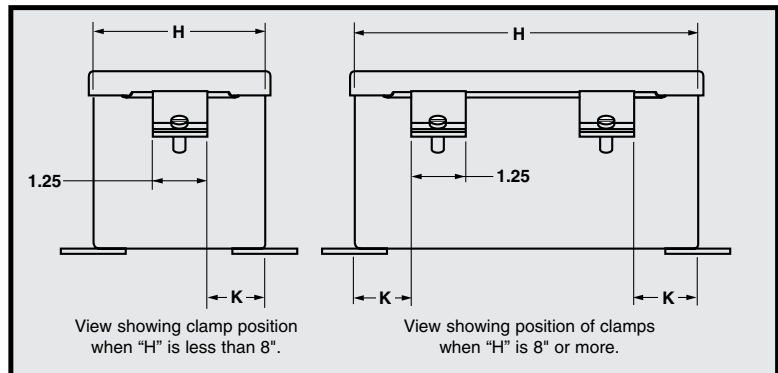
Consult factory for other sizes and configurations.

Box Model No.	Enclosure Size HxWxD	Panel Size A x B	Mounting C x E	Overall L x M	F	G	I	J	K	N	O	P	Q
ENC-060604	6.00x6.00x4.00 (152x152x102)	4.88x4.88 (124x124)	6.75x4.00 (171x102)	7.50x7.00 (191x178)	3.53 (101)	6.31 (160)	5.00 (127)	0.56 (14)	2.38 (60)	2.78 (71)	3.53 (90)	0.63 (16)	6.31 (160)
ENC-080804	8.00x8.00x4.00 (203x203x102)	6.88x6.88 (175x175)	8.75x6.00 (222x152)	9.50x9.00 (241x229)	3.53 (101)	8.31 (211)	7.00 (178)	0.56 (14)	1.00 (25)	2.78 (71)	3.53 (90)	0.63 (16)	8.31 (211)
ENC-100804	10.00x8.00x4.00 (254x203x102)	8.88x6.88 (225x175)	10.75x6.00 (273x152)	11.50x9.00 (292x229)	3.53 (101)	8.31 (211)	7.00 (178)	0.56 (14)	1.00 (25)	2.78 (71)	3.53 (90)	0.63 (16)	10.31 (262)
ENC-101006	10.00x10.00x6.00 (254x254x152)	8.88x8.88 (225x225)	10.75x8.00 (273x203)	11.50x11.00 (292x279)	5.53 (152)	10.31 (262)	9.00 (229)	0.56 (14)	1.00 (25)	4.78 (121)	5.53 (141)	0.63 (16)	10.31 (262)
ENC-121206	12.00x12.00x6.00 (305x305x152)	10.88x10.88 (276x276)	12.75x10.00 (324x254)	13.50x13.00 (343x330)	5.53 (152)	12.31 (313)	11.00 (279)	0.56 (14)	1.00 (25)	4.78 (121)	5.53 (141)	0.63 (16)	12.31 (313)
ENC-141206	14.00x12.00x6.00 (356x305x152)	12.88x10.88 (327x276)	14.75x10.00 (375x254)	15.50x13.00 (394x330)	5.53 (152)	12.31 (313)	11.00 (279)	0.56 (14)	1.00 (25)	4.78 (121)	5.53 (141)	0.63 (16)	14.31 (364)
ENC-161006	16.00x10.00x6.00 (406x254x152)	14.88x8.88 (378x226)	16.75x8.00 (425x203)	17.50x11.00 (445x279)	5.53 (152)	10.31 (262)	9.00 (229)	0.56 (14)	1.00 (25)	4.78 (121)	5.53 (141)	0.63 (16)	16.31 (414)



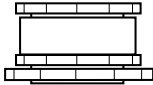
NOTES:

1. Panels (included) are 14 Ga. Steel.
2. Panel Screws are #10-32 Pan Hd.
3. Two Cover Clamps are used if H = 8.00" or more. See below.



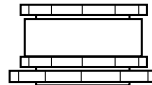
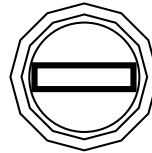
CONNECTORS

for
ROUND CABLE



BRASS MODELS	CABLE O.D. RANGE in.	HOLE REQ'D in. (mm)
CBR-01	0.275 - 0.492	0.750 (19)
CBR-02	0.275 - 0.590	0.812 (21)
CBR-03	0.315 - 0.630	0.906 (23)
CBR-04	0.433 - 0.866	1.125 (29)
CBR-05	0.748 - 1.220	1.469 (37)

for
FLAT CABLE



PLASTIC MODELS	CABLE O.D. RANGE in.	HOLE REQ'D in. (mm)
CPR-11	0.231 - 0.394	0.750 (19)
CPR-12	0.270 - 0.480	0.812 (21)
CPR-13	0.428 - 0.546	0.906 (23)
CPR-14	0.545 - 0.709	1.125 (29)
CPR-15	0.709 - 1.000	1.469 (37)

BRASS MODELS	CABLE THICK RANGE in.	CABLE WIDTH RANGE in.	CLEARANCE HOLE REQ'D in. (mm)
CBF-21	0.16 - 0.45	0.55 - 1.18	1.469 (37)
CBF-22	0.16 - 0.45	0.94 - 1.57	1.875 (48)
CBF-23	0.20 - 0.47	1.14 - 1.77	2.125 (54)
CBF-24	0.20 - 0.47	1.34 - 1.97	2.375 (60)

PLASTIC MODELS	CABLE THICK RANGE in.	CABLE WIDTH RANGE in.	CLEARANCE HOLE REQ'D in. (mm)
CPF-31	0.45 - 1.18	0.55 - 1.02	1.469 (37)
CPF-32	0.45 - 1.57	0.94 - 1.34	1.875 (48)
CPF-33	0.47 - 1.77	1.14 - 1.57	2.125 (54)
CPF-34	0.47 - 1.97	1.14 - 1.77	2.375 (60)

Round Cable Type SO 600 VOLT

Use the information below as a guide to cable or hose sizes and weights. Refer to the National Electrical Code for ampere ratings and other details.

16 AWG.			14 AWG.			12 AWG.			10 AWG.		
NO. COND.	DIA. in. (mm)	WEIGHT/ft. lbs. (kg)	NO. COND.	DIA. in. (mm)	WEIGHT/ft. lbs. (kg)	NO. COND.	DIA. in. (mm)	WEIGHT/ft. lbs. (kg)	NO. COND.	DIA. in. (mm)	WEIGHT/ft. lbs. (kg)
2	0.374 (9)	0.094 (0.04)	2	0.512 (13)	0.158 (0.07)	2	0.586 (15)	0.204 (0.09)	2	0.638 (16)	0.250 (0.11)
3	0.393 (10)	0.110 (0.05)	3	0.538 (14)	0.184 (0.08)	3	0.616 (16)	0.244 (0.11)	3	0.671 (17)	0.310 (0.14)
4	0.427 (11)	0.144 (0.06)	4	0.584 (15)	0.224 (0.10)	4	0.668 (17)	0.282 (0.13)	4	0.730 (19)	0.371 (0.17)
5	0.510 (13)	0.156 (0.07)	5	0.665 (17)	0.160 (0.12)	5	0.725 (18)	0.322 (0.14)	5	0.796 (20)	0.425 (0.19)
6	0.565 (14)	0.178 (0.08)	6	0.710 (18)	0.302 (0.14)	6	0.805 (20)	0.380 (0.17)	6	0.883 (22)	0.485 (0.22)
7	0.605 (15)	0.202 (0.09)	7	0.710 (18)	0.329 (0.15)	7	0.865 (22)	0.435 (0.20)			
8	0.645 (16)	0.222 (0.10)	8	0.770 (20)	0.373 (0.17)	8	0.920 (23)	0.475 (0.21)			
9	0.720 (18)	0.268 (0.12)	9	0.820 (21)	0.414 (0.19)						
10	0.720 (18)	0.278 (0.13)	10	0.885 (22)	0.434 (0.20)						
12	0.740 (19)	0.305 (0.14)									

Round Cable Type W 600 VOLT

8 AWG.			6 AWG.			4 AWG.		
NO. COND.	DIA. in. (mm)	WEIGHT/ft. lbs. (kg)	NO. COND.	DIA. in. (mm)	WEIGHT/ft. lbs. (kg)	NO. COND.	DIA. in. (mm)	WEIGHT/ft. lbs. (kg)
2	0.788 (20)	0.328 (0.15)	2	0.872 (22)	0.425 (0.19)	2	0.980 (25)	0.575 (0.26)
3	0.894 (23)	0.470 (0.21)	3	0.983 (25)	0.614 (0.28)	3	1.068 (27)	0.797 (0.36)
4	0.966 (25)	0.583 (0.26)	4	1.068 (27)	0.769 (0.35)	4	1.166 (30)	1.019 (0.46)

Flat Cable

NEOPRENE JACKETED

AWG SIZE	NO. COND.	THICK x WIDE in. (mm)	WEIGHT/ft. lbs. (kg)
14	4	0.275 (7) x 0.785 (20)	0.181 (.08)
	12	0.295 (7) x 2.165 (55)	0.557 (.25)
12	4	0.335 (9) x 0.945 (24)	0.268 (.12)
10	4	0.335 (9) x 1.045 (27)	0.335 (.15)
6	4	0.490 (12) x 1.495 (38)	0.739 (33)
4	4	0.550 (14) x 1.810 (46)	1.061 (.48)

PVC JACKETED

AWG SIZE	NO. COND.	THICK x WIDE in. (mm)	WEIGHT/ft. lbs. (kg)
16	8	0.22 (6) x 1.16 (29)	0.18 (.08)
	12	0.22 (6) x 1.66 (42)	0.27 (.12)
14	4	0.23 (6) x 0.66 (17)	0.12 (.05)
	8	0.23 (6) x 1.23 (31)	0.22 (.10)
	12	0.23 (6) x 1.75 (44)	0.34 (.15)
12	4	0.25 (6) x 0.74 (19)	0.16 (.07)
	8	0.25 (6) x 1.39 (35)	0.32 (.14)
10	4	0.29 (7) x 0.91 (23)	0.24 (.11)
8	4	0.39 (9) x 1.24 (31)	0.42 (.19)
6	4	0.45 (11) x 1.50 (38)	0.60 (.27)
4	4	0.52 (13) x 1.74 (44)	0.75 (.34)

Hose

GENERAL PURPOSE

I.D. in. (mm)	BRAID	O.D. in. (mm)	MAX PRES psi	WEIGHT/ft. lbs. (kg)
0.25 (6)	2	0.57 (14)	315	0.12 (.05)
0.38 (10)	2	0.73 (19)	315	0.18 (.08)
0.50 (13)	2	0.88 (22)	315	0.24 (.11)
0.75 (19)	2	1.16 (29)	250	0.37 (.17)
1.00 (25)	2	1.50 (38)	150	0.64 (.29)
1.25 (32)	2	1.75 (44)	150	1.01 (.45)
1.50 (38)	2	2.00 (51)	150	1.06 (.48)

SINGLE HYDRAULIC

I.D. in. (mm)	BRAID	O.D. in. (mm)	MAX PRES psi	WEIGHT/ft. lbs. (kg)
0.25 (6)	2	0.59 (15)	250	0.13 (.06)
0.38 (10)	2	0.72 (18)	250	0.18 (.08)
0.50 (13)	2	0.84 (21)	250	0.24 (.11)
0.75 (19)	2	1.16 (29)	250	0.37 (.17)
1.00 (25)	2	1.50 (38)	150	0.64 (.29)
1.25 (32)	2	1.75 (44)	150	1.01 (.45)