



SLIP-RINGS

Electrical Collectors for Industrial Applications



Gleason Slip Rings solve a common problem in today's world: Transfer of electric current from a stationary to a rotating component. There is a Gleason Slip Ring for virtually anything that rotates on a fixed axis and requires a flow of electricity. Electric current is transferred through copper graphite brushes onto copper alloy rings.

Constant contact is maintained between brushes and rings through a variety of unique spring designs, depending on unit type, to insure optimum surface contact and reliable current flow. In some applications the brushes rotate around the rings (example; rotating signs) while in others the rings rotate inside the brushes (example; cable reels).

Standard models are available with ratings from 30 to 700 amps at 600 volts in three basic styles: COMPACT for work in small areas with light and medium duty requirements, ROTA-POWER™, designed for a wide range of applications and HIGH AMPERAGE. Data for all three series are shown on the chart below. Most Gleason Slip Rings are also available in watertight and dust tight enclosures. In addition, heavy duty models are available for up to 15,000 volt applications. Please consult your local representative or Gleason Reel for more information.

RATED MAXIMUM AMPERAGE	RATED MAXIMUM VOLTAGE	MAXIMUM BORE SIZE (i.d.)	MAXIMUM ROTATION SPEED	MINIMUM NUMBER POLES	MAXIMUM NUMBER POLES	MODEL SERIES
30	600	1.5"	40 rpm	2	20	COMPACT 30
35	600	2.0"	125 rpm	2	36	ROTA-POWER 35
55	600	1.5"	40 rpm	2	6	COMPACT 55
75	600	2.0"	125 rpm	2	8	ROTA-POWER 75
125	600	2.0"	125 rpm	2	4	ROTA-POWER 125
200	600	2.0"	125 rpm	2	4	ROTA-POWER 200
200	600	3.5"	300 rpm	2	5	HIGH AMP 200
400	600	3.5"	300 rpm	2	5	HIGH AMP 400
700	600	4.0"	300 rpm	2	5	HIGH AMP 700



A Hubbell Company

GLEASON REEL CORP.

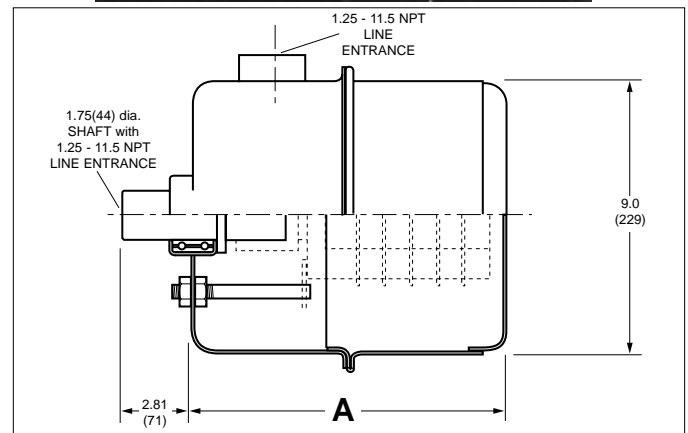
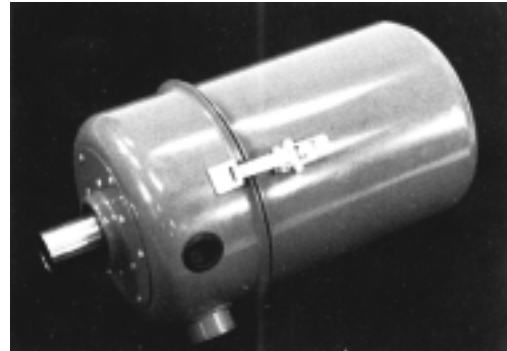
P.O. Box 26 • 600 South Clark Street
Mayville, WI 53050

Phone 920-387-4120 • FAX 920-387-4189

SLIP-RINGS IN ENCLOSURES

COMPACT or ROTA-POWER™ Slip-Ring plus Enclosure

- WEATHERTIGHT HOUSING:** Easy to access Gleason Slip-Ring Enclosures are watertight and dust-tight. Sealed design keeps all but the most minute particles away from the working slip-ring.
- RUGGED CONSTRUCTION:** All enclosures are manufactured from medium gauge steel and are custom fit to each slip-ring size. Main shafts are mounted to enclosure on double ball bearings (for support of slip-ring assembly and enclosure only).
- WEATHERPROOF FINISH:** Gleason Slip-Ring Enclosures feature a baked-on polyester finish for maximum durability in harsh condition. Finish exceeds even zinc plating. Custom colors and finishes are available—contact Gleason Reel for details.
- HEATERS:** For outdoor applications where machinery is not operating for extended periods of time or where low temperatures are common, we recommend the installation of a strip heater. Condensation can build up during shut-down periods causing the slip-ring assembly to require frequent service. The strip heater eliminates this condensation on a continuous basis increasing the service life of your Gleason Reel Slip-Ring assembly.



COMPACT MODELS

Model Number	Number Poles	Amps*	Assembled Length (A) in. (mm)
ECR030-02	2	30	8.88 (226)
ECR030-04	4	30	8.88 (226)
ECR030-06	6	30	8.88 (226)
ECR030-08	8	30	10.63 (270)
ECR030-10	10	30	10.63 (270)
ECR030-12	12	30	12.38 (315)
ECR030-14	14	30	12.38 (315)
ECR030-16	16	30	14.88 (378)
ECR030-18	18	30	14.88 (378)
ECR030-20	20	30	14.88 (378)
ECR055-02	2	55	8.88 (226)
ECR055-04	4	55	10.63 (270)
ECR055-06	6	55	12.38 (315)

* Unless otherwise specified, standard assemblies are supplied with lead wires as indicated, derated per lead wire limits and per number of poles (see page 4). If larger or mixed lead wires are required or for high-temp use (<200°C), please contact us.

ROTA-POWER™ MODELS

Model Number	Number Poles	Amps*	Assembled Length (A) in. (mm)
ERP035-02	2	35	12.00 (305)
ERP035-03	3	35	12.00 (305)
ERP035-04	4	35	12.00 (305)
ERP035-06	6	35	14.50 (369)
ERP035-08	8	35	14.50 (369)
ERP035-10	10	35	17.00 (432)
ERP035-12	12	35	17.00 (432)
ERP035-14	14	35	19.50 (496)
ERP035-16	16	35	19.50 (496)
ERP035-20	20	35	24.50 (623)
ERP035-24	24	35	24.50 (623)
ERP035-30	30	35	32.50 (826)
ERP035-36	36	35	32.50 (826)
ERP075-02	2	75	14.50 (369)
ERP075-03	3	75	14.50 (369)
ERP075-04	4	75	14.50 (369)
ERP125-02	2	125	14.50 (369)
ERP125-03	3	125	17.00 (432)
ERP125-04	4	125	17.00 (432)
ERP200-02	2	200	12.00 (305)
ERP200-03	3	200	14.50 (369)
ERP200-04	4	200	14.50 (369)

* Unless otherwise specified, standard assemblies are supplied with lead wires as indicated, derated per lead wire limits and per number of poles (see page 4). If larger or mixed lead wires are required or for high-temp use (<200°C), please contact us.