



Retrofits & New Installations

Solid-State IGBT Magnet Control

Infinitely variable current control for all lifting magnets
Magnets operate at the lowest possible temperature

Optimize Every Magnet

Adjustable current and times for all operating modes
to maximize performance, optimize production and
prolong magnet life

Save Energy Costs

Magnet energy consumption reduced by up to 75%

Save Maintenance Costs

Solid state construction, no wear components

Save Magnet Repair Costs

Eliminate voltage spikes and electrical magnet wear, reduced magnet rewinds

Improve Production Capacity – Run Cooler

- Increased throughput up to 50%
- Reduced drop time
- Reduced cleaning time
- Reduce cycle time up to 38%
- Improved lift capacity by 10-25%, 15-20% average
- Reduced magnet operating temperatures

Additional Benefits

- Solid-state construction
- Uses existing operator controls
- Eliminates need for dual voltage magnet controls
- Uses existing DC power supply
- Uses existing connections

Specifications

- **Voltage:** 230 VDC Nominal, 300 VDC Max, 120 VDC min
- **Current:** For use on magnets rated up to 350 Cold Amps Maximum
- **Ambient Operating Temperature:** +50°C Maximum to -10°C Minimum
- **Operating modes:** Lift, Hold, Feather, Dribble, Clean
- **Dimensions:** 35.7" (L) x 24" (W) x 15" (D) Approx.
- **Weight:** 190lbs approx.
- **Diagnostics & Parameter Adjustment** – Data Terminal, Part No. A62499

Distributed by:

OICS, LLC, a subsidiary of Cableform Inc.

— 8845 Three Notch Road — Troy, Virginia 22974 — U.S.A.

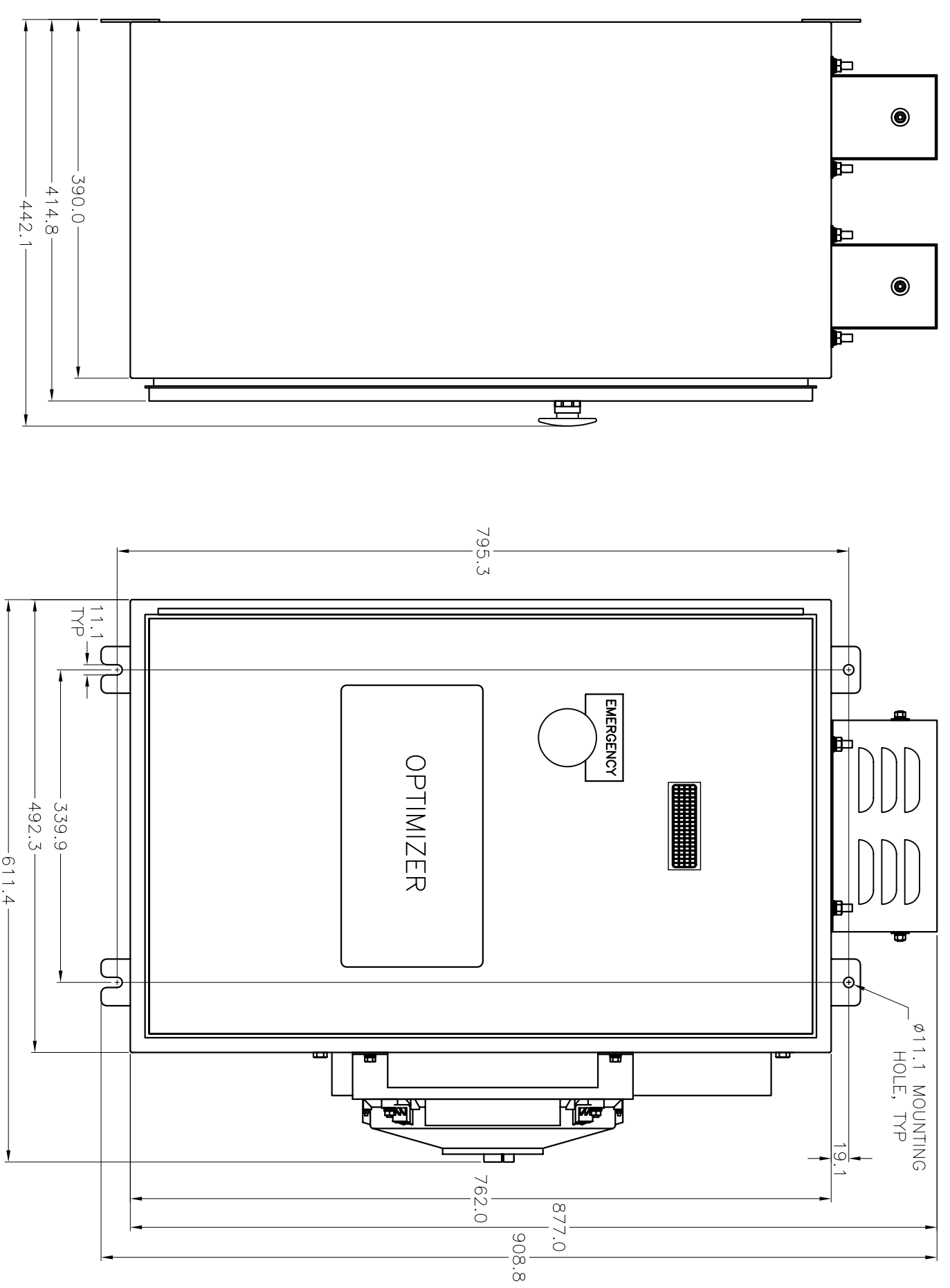
Tel: 434/589-8224 — Fax: 434/589-3803 — Email: sales@OICSystems.com — www.cableform.com

Specifications subject to change without notice.

© 2007 OICS, LLC

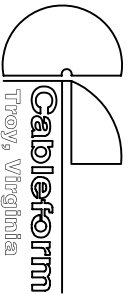


M350GENII-240D Patent Pending



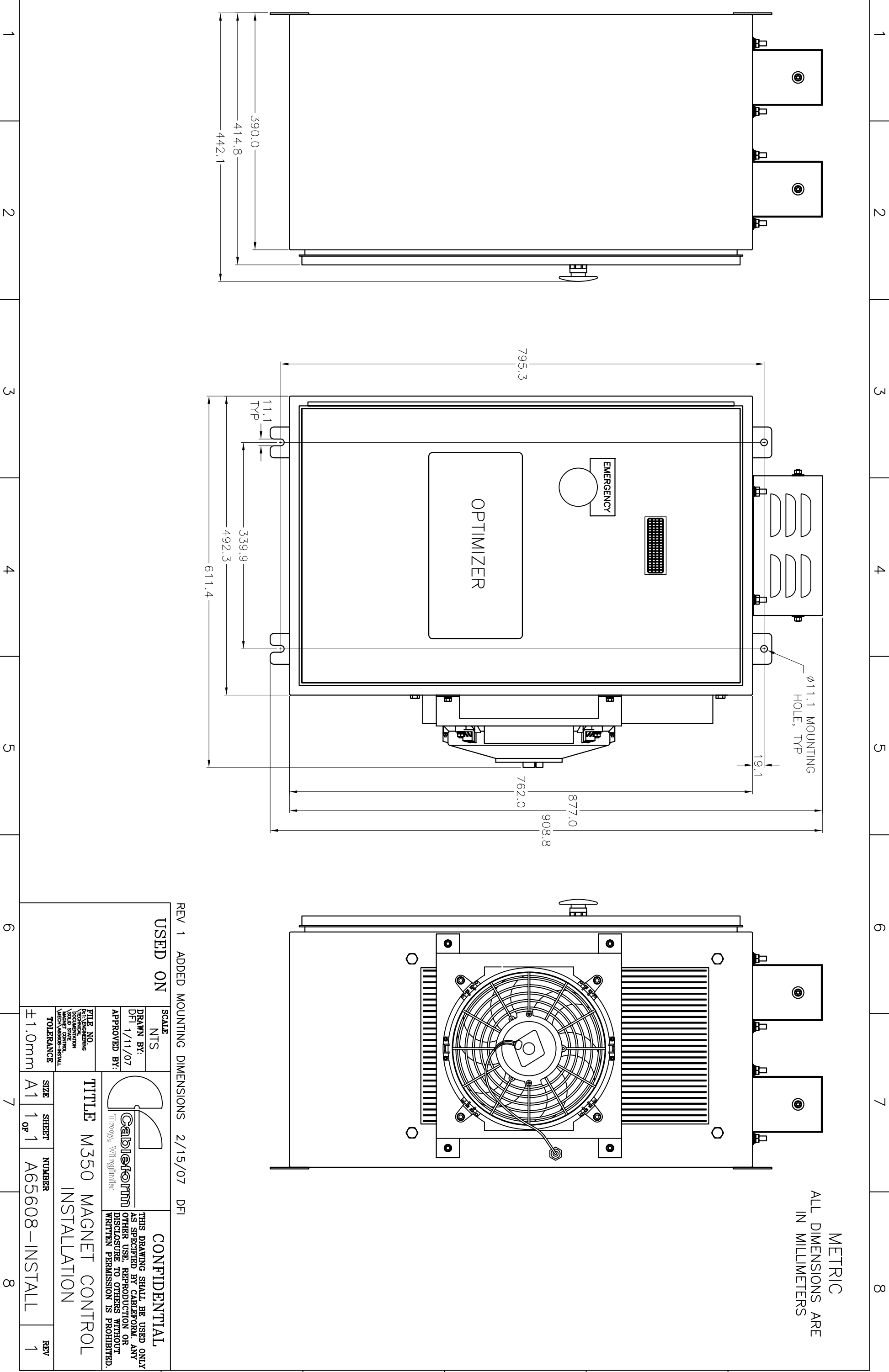
METRIC
ALL DIMENSIONS ARE
IN MILLIMETERS

REV 1 ADDED MOUNTING DIMENSIONS 2/15/07 DFI

USED ON		SCALE		TITLE		CONFIDENTIAL	
NTS		NTS		M350 MAGNET CONTROL INSTALLATION		THIS DRAWING SHALL BE USED ONLY AS SPECIFIED BY CABLIFORM. ANY OTHER USE, REPRODUCTION OR DISCLOSURE TO OTHERS WITHOUT WRITTEN PERMISSION IS PROHIBITED.	
DRAWN BY: DFI 1/11/07		APPROVED BY:		 Cabliform Troy, Virginia		TOLERANCE $\pm 1.0\text{mm}$	
FILE NO. TECHNICAL DOCUMENTATION MAGNET CONTROL MECH ASSOC-INSTALL		TITLE NO. M350 MAGNET CONTROL					
SIZE	SHEET	NUMBER	REV				
A1	1 OF 1	A65608-INSTALL	1				

1 2 3 4 5 6 7 8

A B C D E F



1 2 3 4 5 6 7 8

A B C D E F