

End-to-End Solutions

Hubbell solutions offer a fully integrated system of copper and fiber network cabling and components that are designed to exceed all applicable standards for performance and reliability. Hubbell cabling infrastructure offers the option of a complete end-to-end system utilizing Hubbell connectivity and cable or an open architecture solution utilizing Hubbell connectivity and cable from any of our qualified cable partners. Either option delivers all the benefits that component-level performance can offer to end users, designers and specifiers.

Hubbell cabling systems provide the confidence of third party component performance verification, along with a full 25-Year MISSION CRITICAL[®] System Warranty. Future performance, including 100W PoE capability, is also engineered into Hubbell UTP cabling systems to assure long term operation with emerging applications.





End-to-End Solutions

NEXTSPEED® Ascent Category 6A UTP System	A4
NEXTSPEED® Ascent Category 6A Shielded System	A5
NEXTSPEED® Category 6 UTP System.....	A6
NEXTSPEED® Category 5e UTP System	A7
Hubbell OptiChannel Fiber Solutions	A8

The Hubbell Integrated System Advantage

Over the past decade, Ethernet data rates have escalated to support transmission of increasing volumes of data with larger file sizes associated with cloud computing, virtualization, streaming video and other digital media content. The increase in data rates impacts how networks and cabling infrastructure are designed and installed.

Supporting today's bandwidth intensive applications has resulted in a shift to 10GBASE-T deployments. As a result, 10GBASE-T is expanding in the enterprise and the data center. Hubbell's extensive line of both copper and fiber systems support 10GbE and other emerging technologies.



Hubbell is a Solution Developer Partner within the Cisco Developer Network Program

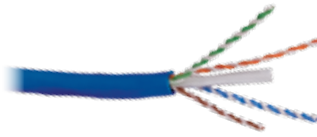




Jack
HJ6AB



Patch Panel
HP6A24



Cable
C6ASRB



Patch Cord
HC6AB01

NEXTSPEED® Ascent Category 6A UTP solution is a tuned system of structured cabling components designed and balanced to work together to support bandwidth beyond 625MHz. NEXTSPEED® Ascent provides the highest level of reliability with a zero bit error rate of 10⁻¹³.

NEXTSPEED® Ascent Category 6A Jacks

Color	Single Pack	25-Pack	Color	Single Pack	25-Pack
Black	HJ6ABK	HJ6ABK25	Office White	HJ6AOW	HJ6AOW25
Blue	HJ6AB	HJ6AB25	Orange	HJ6AOR	HJ6AOR25
Electric Ivory	HJ6AEI	HJ6AEI25	Purple	-	HJ6AP25
Gold	-	HJ6AGL25	Red	HJ6AR	HJ6AR25
Gray	HJ6AGY	HJ6AGY25	White	HJ6AW	HJ6AW25
Green	HJ6AGN	HJ6AGN25	Yellow	HJ6AY	HJ6AY25

Note: Light Almond is the same color as Office White. See color chart on page V12.

NEXTSPEED® Ascent Category 6A Component Patch Panels, 19"

Format	Color	24-Port Catalog No.	48-Port Catalog No.
Standard	Black	HP6A24	HP6A48
Standard	White	HP6A24W	HP6A48W
Angled	Black	HP6A24A*	HP6A48A*

*Angled panels protrude 4.46" from the plane of the rack. One extra inch of space is recommended between the door and panel angle.

Note: See page C4 for additional sizes.

NEXTSPEED® Ascent Category 6A Cable

Color	Plenum Spool	Riser Spool
Blue	C6ASPB	C6ASRB
Gray	C6ASPGY	C6ASRGY
White	C6ASPW	C6ASRW
Yellow	C6ASPY	C6ASRY

Note: All category rated cable is packaged in 1000ft quantities. Made-to-order colors available.

See Section E for additional cable requirements.

NEXTSPEED® Ascent Category 6A Patch Cords

Color	Catalog No.	Color	Catalog No.
Black	HC6ABKyy	Purple	HC6APyy
Blue	HC6AByy	Pink	HC6APKyy
Green	HC6AGNyy	Red	HC6ARyy
Gray	HC6AGYyy	White	HC6AWyy
Orange	HC6AORyy	Yellow	HC6AYyy

yy = Standard Length: **01** (1'), **03** (3'), **05** (5'), **07** (7'), **10** (10'), **15** (15'), **20** (20'). Made-to-order lengths are available from 25ft to 100ft in 5ft increments. See color chart on page V12.

NEXTSPEED® 10 GbE Field Termination Kits

Pairs	Legs	Connecting Blocks	Catalog No.
64-pair	With	16	6110FTK64WL
64-pair	Without	16	6110FTK64NL
192-pair	With	64	6110FTK192WL

Note: 6-110, 4-pair connecting blocks. See page C10 for full connecting block system.

NEXTSPEED® Ascent Category 6A Pre-Terminated Trunk Cable Assemblies

BIDnet Pre-Terminated Copper Trunk Cable Assemblies are the ideal solutions for data centers, open office and other applications where accuracy, reliability and performance are critical factors.

- Simplifies installation time by 75%
- Reduces initial installation cost by 30%
- 100% factory tested and assembled
- Mission Critical® 25-year warranty

Note: Contact your local distributor or Hubbell Customer Service for additional information on BIDnet Pre-Terminated Trunk Cable Assemblies.



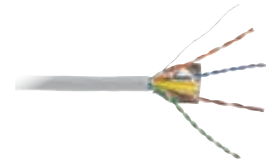
Shielded Jack
SJ6A



Shielded Patch Panel
HPJS24



Shielded Patch Cord
PC6AGY03



FTP Cable
C6AFTSPGY

NEXTSPEED® Ascent Shielded Category 6A FTP is a tuned system of structured cabling components designed and balanced to work together delivering headroom beyond 500MHz. Ascent Shielded systems provide the highest level of reliability with additional protection against AXT and other external noise sources.

NEXTSPEED® Ascent Shielded Category 6A Jacks

Unit of Measure	Catalog No.
Single pack	SJ6A
24-pack	SJ6A24

NEXTSPEED® Shielded Category 6A Patch Cords

Color	Catalog No.	Color	Catalog No.
Black	PC6ABKyy	Gray	PC6AGYyy
Blue	PC6AByy	Yellow	PC6AYyy

yy = Standard Length: **03** (3'), **05** (5'), **07** (7'), **10** (10'), **15** (15'), **20** (20'), **25** (25'). Made-to-order lengths are available from 30ft to 75ft in 5ft increments.

NEXTSPEED® Shielded Patch Panels, Unloaded, 19"

Ports	Height Inches (mm)	Rack Units	Color	Catalog No.
24	1.75" (45)	1	Black	HPJS24
48	3.50" (89)	2	Black	HPJS48

Note: Jacks shown above are sold separately.

NEXTSPEED® Ascent 10GbE, FTP Cable, 4-Pair

Color	Plenum Spool	Riser Spool
Blue	C6AFTSPB	C6AFTSRB
Gray	C6AFTSPGY	C6AFTSRGY
White	C6AFTSPW	C6AFTSRW
Yellow	C6AFTSPY	C6AFTSRY

Note: All category rated cable is packaged in 1000 foot quantities. Made-to-order colors available.

NEXTSPEED® Ascent Shielded Category 6A Trunk Cable Assemblies

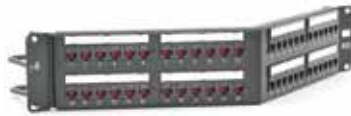
BIDnet Pre-Terminated Copper Trunk Assemblies improve air flow in the data center, decrease installation time and supply superior performance.

- Simplifies installation time by 75%
- Reduces initial installation cost by 30%
- 100% factory tested and assembled
- Mission Critical® 25-year warranty

Note: Contact your local distributor or Hubbell Customer Service for additional information on BIDnet Pre-Terminated Copper Trunk Assemblies.



Jack
HXJ6BK



Patch Panel
HP648A



Patch Cord
HC6B01



Cable
C6RPY

The NEXTSPEED® Category 6 UTP system is designed to deliver headroom beyond 500MHz for dependable Multi-gigabit Ethernet applications. NEXTSPEED's extended bandwidth provides reliability with zero bit error rate performance for today's high speed digital communications.

NEXTSPEED® Category 6 Jacks

Color	Single Pack	25-Pack	Color	Single Pack	25-Pack
Black	HXJ6BK	HXJ6BK25	Office White	HXJ6OW	HXJ6OW25
Blue	HXJ6B	HXJ6B25	Purple	–	HXJ6P25
Gold	–	HXJ6GL25	Red	HXJ6R	HXJ6R25
Gray	HXJ6GY	HXJ6GY25	White	HXJ6W	HXJ6W25
Green	HXJ6GN	HXJ6GN25	Yellow	HXJ6Y	HXJ6Y25

Note: Light Almond is the same color as Office White. See color chart on page V12.

NEXTSPEED® Category 6 Patch Panels, 19"

Format	Color	24-Port Catalog No.	48-Port Catalog No.
Standard	Black	HP624	HP648
Standard	White	HP624W	HP648W
Angled	Black	HP624A*	HP648A*

*Angled panels protrude 4.46" from the plane of the rack. One extra inch of space is recommended between the door and panel angle.

Note: See page C5 for additional sizes.

NEXTSPEED® Category 6 Patch Cords

Color	Catalog No.	Color	Catalog No.
Black	HC6BKyy	Purple	HC6Pyy
Blue	HC6Byy	Red	HC6Ryy
Green	HC6GNyy	White	HC6Wyy
Gray	HC6GYyy	Yellow	HC6Yyy
Orange	HC6ORyy		

yy = Standard Length: **01** (1'), **03** (3'), **05** (5'), **07** (7'), **10** (10'), **15** (15'), **20** (20'), **25** (25'). Made-to-order lengths are available from 30ft to 100ft in 5ft increments. See color chart on page V12.

NEXTSPEED® Category 6 UTP Cable, 4-Pair

Color	REELEX® Plenum Box	REELEX® Riser Box
Blue	C6RPB	C6RRB
Gray	C6RPGY	C6RRGY
White	C6RPW	C6RRW
Yellow	C6RPY	C6RRY

Note: All category rated cable is packaged in 1000 foot quantities. Made-to-order colors available. See Section E for additional cable requirements. REELEX is licensed and patented by Windings Inc.

NEXTSPEED® Category 6 Field Termination Kits

Pairs	Legs	Connecting Blocks	Catalog No.
64-pair	With	16	6110FTK64WL
64-pair	Without	16	6110FTK64NL
192-pair	With	64	6110FTK192WL

Note: 6-110, 4-pair connecting blocks. See page C10 for full connecting block system.

NEXTSPEED® Category 6 Trunk Cable Assemblies

BIDnet assemblies provide simplicity for permanent links between switches, servers, patch panels, MUTOAs and zone distribution areas enabling easy moves, adds and changes to the infrastructure.

- Simplifies installation time by 75%
- Reduces initial installation cost by 30%
- 100% factory tested and assembled
- Mission Critical® 25-year warranty

Note: Contact your local distributor or Hubbell Customer Service for additional information on BIDnet Pre-Terminated Copper Trunk Assemblies.



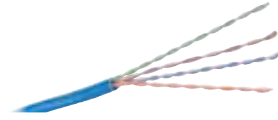
Jack
HXJ5EB



Patch Panel
HP5E24



Patch Cord
HC5EB01



Cable
C5EPRPB

NEXTSPEED® Category 5e is designed to support reliable Gigabit Ethernet performance. The NEXTSPEED system is available in a variety of colors, lengths and configurations for multiple applications.

NEXTSPEED® Category 5e Jacks

Color	Single Pack	25-Pack
Black	HXJ5EBK	HXJ5EBK25
Blue	HXJ5EB	HXJ5EB25
Gold	–	HXJ5EGL25
Gray	HXJ5EGY	HXJ5EGY25
Green	HXJ5EGN	HXJ5EGN25

Color	Single Pack	25-Pack
Office White	HXJ5EOW	HXJ5EOW25
Purple	–	HXJ5EP25
Red	HXJ5ER	HXJ5ER25
White	HXJ5EW	HXJ5EW25
Yellow	HXJ5EY	HXJ5EY25

Note: Light Almond is the same color as Office White. See color chart on page V12.

NEXTSPEED® Category 5e Patch Panels, 19"

Format	Color	24-Port Catalog No.	48-Port Catalog No.
Standard	Black	HP5E24	HP5E48
Standard	White	HP5E24W	HP5E48W
Angled	Black	HP5E24A*	HP5E48A*

*Angled panels protrude 4.46" from the plane of the rack. One extra inch of space is recommended between the door and panel angle.

Note: See page C6 for additional sizes.

NEXTSPEED® Category 5e Patch Cords

Color	Catalog No.	Color	Catalog No.
Black	HC5EBKyy	Purple	HC5EPyy
Blue	HC5EByy	Red	HC5ERYy
Gray	HC5EGYyy	White	HC5EWyy
Green	HC5EGNyy	Yellow	HC5EYyy
Orange	HC5EORYy		

yy = Standard Length: **01** (1'), **03** (3'), **05** (5'), **07** (7'), **10** (10'), **15** (15'), **20** (20'). Made-to-order lengths are available from 25ft to 100ft in 5ft increments.

NEXTSPEED® GbE Ethernet Patch Panels, 19"

Format	Color	24-Port Catalog No.	48-Port Catalog No.
Standard	Black	PG24	PG48

NEXTSPEED® Category 5e UTP Cable, 4-Pair

Color	REELEX® Plenum	REELEX® Riser
Blue	C5EPRPB	C5EPRRB
Gray	C5EPRPGY	C5EPRRGY
White	C5EPRPW	C5EPRRW
Yellow	C5EPRPY	C5EPRRY

Note: All category rated cable is packaged in 1000ft quantities. Made-to-order colors available. See Section E for additional cable requirements. REELEX is licensed and patented by Windings Inc.

NEXTSPEED® Category 5e Field Termination Kits

Pairs with 4-pair blocks	Catalog No.
50-pair	110BLK50FTK4
100-pair	110BLK100FTK4
300-pair	110BLK300FTK4

Note: See page C11 for more information on 4- and 5-pair Category 5e 110 blocks.

NEXTSPEED® Category 5e Trunk Cable Assemblies

BIDnet offers a "Green" approach to cabling by providing the exact lengths and number of connections, eliminating unwanted cable waste.

- Simplifies installation time by 75%
- Reduces initial installation cost by 30%
- 100% factory tested and assembled
- Mission Critical® 25-year warranty

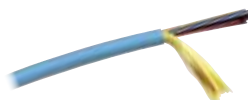
Note: Contact your local distributor or Hubbell's Customer Service for additional information on BIDnet Pre-Terminated Copper Trunk Assemblies.



PROclick® Connectors
FCLC900K50GM12
FCSC900K50GM12



High Density Enclosure
FCRHD1BK



Cable
HFCD1024P3



MPO Cassette
OCLCQ50G



Fiber Trunk Assembly,
Made to Order

The Hubbell OptiChannel system is a comprehensive, end-to-end fiber solution that supports high bandwidth data center applications including 10/40/100 Gigabit Ethernet. The OptiChannel high density modular design promotes efficiency, flexibility and maximum space utilization without compromising accessibility.

PROclick® Connectors

OM3 multimode	
Description	Catalog No.
LC 12-pack	FCLC900K50GM12
SC 12-pack	FCSC900K50GM12
LC 100-pack	FCLC900K50GM100

Standard SC/LC-MPO Cassettes

50, OM3		
Description	Ports	Catalog No.
SC duplex	12	OCSC50G
LC duplex	12	OCLC50G
LC duplex	24	OCLCD50G
LC quad	24	OCLCQ50G

Note: Standard LC-MPO cassettes are not compatible with the HD enclosures.

Ultra Compact LC-MPO Cassettes

Description	Catalog No.
12-port, 50, OM3	OCLCHD50G3

Fiber Trunk Cable Assemblies

BIDnet pre-terminated fiber trunk assemblies are custom made to order in any length, fiber type or cable construction for a reliable, high-performance data center.

- Fast, efficient deployment
- 100% factory tested and assembled
- Mission Critical® 25-year warranty

MPO round, OM3/OM4	
Options	Applications Supported
12-fiber	10/40 GbE
24-fiber	10/40/100 GbE
48-fiber	10/40/100 GbE

Note: Contact your local distributor or Hubbell customer service for additional information on BIDnet Pre-Terminated Fiber Trunk Assemblies. See page H6 for fiber BIDnet assemblies.

High Density Patch Cords

OM3 duplex single jacket	
Description	Catalog No.
LC to LC	HDPCLC50G3My
LC to SC	HDPCLCSC50G3My

y = Standard Length: **1, 2, 3, 4, 5, 6, 8 or 10 meters**

High Density Enclosures

144-port, 1U, 19" (483)	
Color	Catalog No.
Black	FCRHD1UBK
Gray	FCRHD1UGY

Cable

Description	Catalog No.
Indoor, tight buffer	HFCD1 Series
Indoor, tight buffer, armored	HFCD15 Series
Indoor/outdoor, tight buffer	HFCD14 Series
Indoor/outdoor, tight buffer, armored	HFCD19 Series

Note: See Section I for more information.

Standard Patch Cords

OM3 duplex zipcord jacket	
Description	Catalog No.
LC to LC	DFPCLCLCEyMM
MSFP to LC	MSFPLC50G3My

y = Standard Length: **1, 2, 3, 4, 5, 6, 8 or 10 meters**