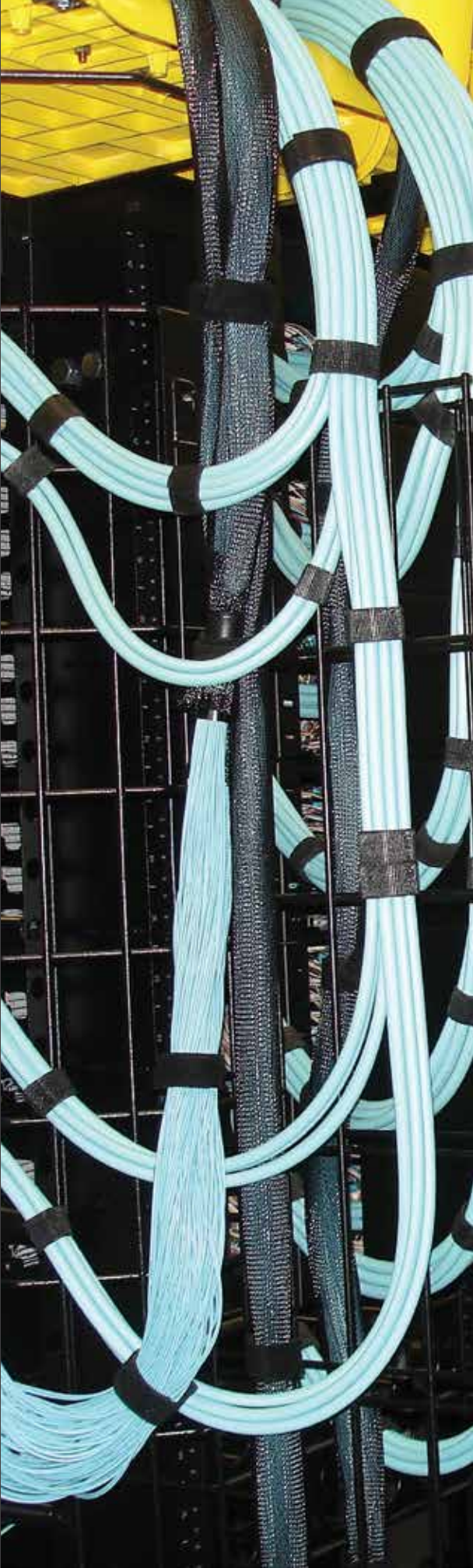


FIBER | Connectivity

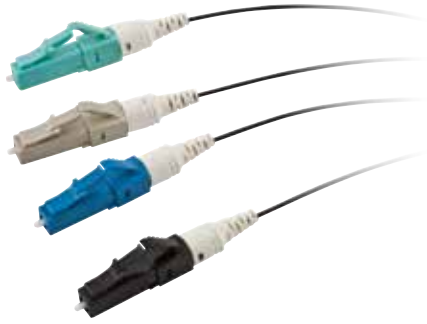
Hubbell optical fiber connectivity products offer a modular, standards-compliant solution for enterprise and data center cabling infrastructure. This section features high performance PROclick® pre-polished connectors, fusion splice connectors, adapters and keystone snap fittings. FSP Series panels and OC Series pre-terminated cassettes complete the end-to-end solution with a full range of densities, fiber types and adapter options.





FIBER | Connectivity

Pre-Polished Connectors.....	G3
Fusion Splice Connectors.....	G4
Adhesive and Crimp Style Connectors	G5
MPO Cassettes	G6
FSP Adapter Panels	G7
Keystone Adapter Snap Fittings	G10
LC and SC Adapters.....	G12
Specialty Adapters.....	G13
Termination Tools and Accessories	G14
Advanced Fiber Cleaning Supplies	G16



LC Pre-Polished
FCLC900K50GM12



SC Pre-Polished
FCSC900K62M12



2CLICK® ST
FCSTSM12

Standards

- ANSI/TIA-568.3-D
- TIA-604-FOCIS
- Telcordia GR-326-CORE

Pre-Polished Connectors

900/250 μM cable, 10mm cleave length

LC PROclick®

Color	Fiber Type	12-Pack	100-Pack
Aqua	50μM, OM3/OM4	FCLC900K50GM12	FCLC900K50GM100
Beige	62.5μM, OM1	FCLC900K62M12	FCLC900K62M100
Black	50μM, OM2	FCLC900K50M12	FCLC900K50M100
Blue	SM, OS2	FCLC900KSM12	FCLC900KSM100
Green		-	-

SC PROclick®

Fiber Type	12-Pack	100-Pack
50μM, OM3/OM4	FCSC900K50GM12	FCSC900K50GM100
62.5μM, OM1	FCSC900K62M12	FCSC900K62M100
50μM, OM2	FCSC900K50M12	FCSC900K50M100
UPC SM, OS2	FCSC900KSM12	FCSC900KSM100
APC SM, OS2	FCSC900KASM12	-

ST 2Click®

Color	Fiber Type	12-Pack
Aqua	50μM, OM3/OM4	FCST50GM12
Beige	62.5μM, OM1	FCST62M12
Black	50μM, OM2	FCST50M12
Blue	SM, OS2	FCSTSM12

Fiber Cleaver

Description	Catalog No.
Multimode only	OFCLV3
SM or MM fiber, CT-30 style, with case	OFCLV4
SM or MM fiber, precision, with case	OFCLV5

Universal Fiber Strip Tool

Description	Catalog No.
900 micron buffered 250 fiber acrylate buffer, loose tube and PVC jackets	OFSTRIP2

Visual Fault Locator (ST, SC, LC)

Description	Catalog No.
Visual fault locator	OFVFLKT1

TIP: Use a VFL during termination for optimum test results.

Four Easy Termination Steps



Strip



Wipe

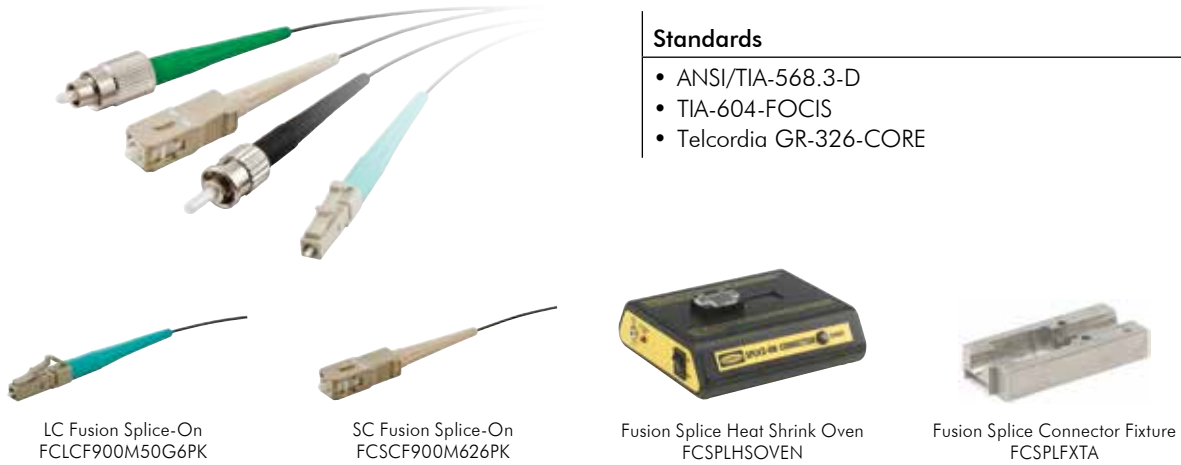


Cleave



Insert and Click

Note: See page G14 for termination tools and accessories. Cleave tool OFCLV3 is suitable for multimode only. Visual Fault locator OFVFLKT1 recommended during termination. Precision cleave tool OFCLV4 or OFCLV5 is required for singlemode terminations. Use a precision cleave tool for optimum performance.



Standards

- ANSI/TIA-568.3-D
- TIA-604-FOCIS
- Telcordia GR-326-CORE

LC Fusion Splice-On
FCLCF900M50G6PK

SC Fusion Splice-On
FCSCF900M626PK

Fusion Splice Heat Shrink Oven
FCSPLHSOVEN

Fusion Splice Connector Fixture
FCSPLFXTA

Fusion Splice-On Connectors

6-Pack

Fiber Type	LC	SC	ST-Style	FC
Multimode 62.5 (OM1)	FCLCF900M626PK	FCSCF900M626PK	FCSTF900M626PK	FCFCF900M626PK
Multimode 50 (OM2)	FCLCF900M506PK	FCSCF900M506PK	FCSTF900M506PK	FCFCF900M506PK
Multimode 50 (OM3)	FCLCF900M50G6PK	FCSCF900M50G6PK	FCSTF900M50G6PK	FCFCF900M50G6PK
Singlemode UPC (OS2)	FCLCF900SM6PK	FCSCF900SM6PK	FCSTF900SM6PK	FCFCF900SM6PK
Singlemode APC (OS2)	–	FCSCF900SMA6PK	–	FCFCF900SMA6PK

100-Pack

Multimode 50 (OM3)	FCLCF900M50G100PK	FCSCF900M50G100PK	–	–
Singlemode UPC (OS2)	FCLCF900SM100PK	FCSCF900SM100PK	–	–

Note: Pack of 6 connectors, each in a protective capsule with cleave protector, extended dust cap, 900µm boot and splice sleeve. Compatible with fusion splicers having a removable fiber holder. See application chart below. Metal holder fixture required (sold separately). See application table below. Hubbell fusion splice heat shrink oven, Catalog Number FCSPLHSOVEN is also required for termination.

Fusion Splice Heat Shrink Oven

Catalog No.

FCSPLHSOVEN

Metal Splice Connector Fixture Application Chart

Fusion Splicer Manufacturer	Fusion Splicer Model No.	Splice-On Connectors Supported (900µ)	Metal Connector Fixture Catalog No.
AFL/Fujikura	FSM-11 (S/M)	LC, SC, ST, FC	FCSPLFXSTAR
	FSM-12S	LC, SC, ST, FC	FCSPLFXTA
	FSM-17S	LC, SC	
	FSM-18S, FSM-60 (S/R)	LC, SC, ST	
	FSM-21S	LC, SC	FCSPLFXTA2
Furukawa/Fitel®	S121 (A/M), S122 (A/C/M)	LC, SC, ST, FC	FCSPLFXTF
	S123 (C/M), S153, S178A		
Sumitomo®	Type-25e (U/S/M)	LC, SC, ST, FC	FCSPLFXTS
	Type-39FH		
	Type-46, 66		
	Quantum (Q101-CA)		
INNO™	IFS10, IFS15	LC, SC, ST, FC	FCSPLFXTI
Greenlee®	910 FS	LC, SC, ST, FC	FCSPLFXTG
FIS	SUPER COUGAR	LC, SC, ST, FC	FCSPLFXTFS

Sumitomo is a registered trademark of Sumitomo Electric Lightwave. Fitel is a registered trademark of Furukawa Electric Co., LTD. INNO is a trademark of INNO Instrument Inc. Greenlee is a registered trademark of Greenlee Textron Inc.



SC Adhesive
FCSCM12R
FCSCS12R



ST and SC Crimp
FCSTM12R
FCSTS12R



LC Adhesive
FCLCMM



Crimp Insert and 3mm Boot
FCLCXX
OFPCRKXX

Adhesive Connectors

900µm termination

Mode	SC		ST-Style	
	12-Pack	100-Pack	12-Pack	100-Pack
Multimode	FCSCM12R	FCSCM100R	FCSTM12R	FCSTM100R
Singlemode	FCSCS12R	FCSCS100R	FCSTS12R	FCSTS100R

LC Simplex Adhesive Connectors

900µm termination, LC connector, white boot and dust cap

Mode	6-Pack
Multimode	FCLCMM
Singlemode	FCLCSM

Crimp Style Non-Adhesive Connectors

900µm termination

Mode	SC		ST-Style	
	12-Pack	100-Pack	12-Pack	100-Pack
Multimode	FCSCMQ12R	FCSCMQ100R	FCSTMQ12RA	FCSTMQ100R
Singlemode	FCSCSQ12R	FCSCSQ100R	FCSTSQ12R	FCSTSQ100R

Note: Includes 1 connector, dust cap, black boot (MM) or yellow boot (SM), and crimp insert.

Crimp Inserts

Mode	12-Pack	100-Pack
Multimode/singlemode	FCCI12	FCCI100

Crimp Rings/3mm Boots

(25) crimp sleeves and boots

Description	Catalog No.
Multimode	OFPCRKM
Singlemode	OFPCRKS

Note: SC/ST-style Hubbell OptiChannel connectors for 3mm jacketed cables, black boot (MM) or yellow boot (SM).

Note: OFCMT04 crimp tool required for SC and ST crimp or adhesive termination. See page G14 for termination tools and accessories sold separately.



SC Duplex, 12-Port, OM3
OCSC50G



ST Duplex, 12-Port, OM2
OCST50



LC Duplex, 12-Port, OS2
OCLCSM



LC Quad, 24-Port, OM3
OCLCQ50G



MT-RJ, 12-Port, OM2
OCRJ50

MPO 12- and 24-Fiber Cassettes

Type A polarity, max 1U density: 72 LC ports ((3) 24-port cassettes across)

Fiber Type	Color	SC Duplex	ST-Style	LC Duplex 12F	LC Duplex 24F*	LC Quad 24F*	MT-RJ
50µm, OM2	Black	OCSC50	OCST50	OCLC50	OCLCD50	OCLCQ50	OCRJ50
50µm, OM3	Aqua	OCSC50G	-	OCLC50G	OCLCD50G	OCLCQ50G	OCRJ50G
50µm, OM4	Aqua	OCSC50G4	-	OCLC50G4	OCLCD50G4	OCLCQ50G4	-
50µm, OM4	Violet	OCSC50G4VI	-	OCLC50G4VI	OCLCD50G4VI	OCLCQ50G4VI	-
62.5µm, OM1	Beige	OCSC62	OCST62	OCLC62	OCLCD62	OCLCQ62	OCRJ62
SM, OS2	Blue	OCSCSM	OCSTSM	OCLCSM	OCLCDSM	OCLCQSM	-
Type C polarity							
50µm, OM4	Aqua			OCLC50G4C	OCLCD50G4C	OCLCQ50G4C	
50µm, OM4	Violet			OCLC50G4CVI	OCLCD50G4CVI	OCLCQ50G4CVI	

*24 fibers, 2-12 fiber MPO receptacles in rear.

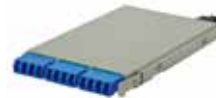
Note: See G16 for Keyed LC fiber cassettes. See page J3 for ultra compact high density cassettes used in the FCRHD1UBK enclosure.



OM3 Cassette
OCLCHD50G3



OM4 Cassette
OCLCD50G4



OS2 Cassette
OCLCHDSM

Ultra Compact LC to MPO Cassettes, 12-Fiber

Type A polarity, max 1U density: 144 LC ports (12 cassettes)

Height In (mm)	Width In (mm)	Depth In (mm)	Fiber Type	Color	Catalog No.
0.5" (13)	3.5" (89)	5.2" (132)	OM3	Aqua	OCLCHD50G3
			OM4	Aqua	OCLCHD50G4
			OS2	Blue	OCLCHDSM
			OM4	Violet	OCLCHD50G4VI

Note: Use with FCRHD Series High Density Enclosures, page J3.



LC Duplex, 6-Port
FSPLCDS3AQ



LC Duplex, 24-Port
FSPLCDS12AQ



LC Quad, 24-Port
FSPLCQS6Y



SC Duplex, 6-Port
FSPSCDS3B



SC Duplex, 12-Port
FSPSCDS6Y

LC Duplex FSP Adapter Panels

	LC 6-Port (3 LC Duplex)		LC 12-Port (6 LC Duplex)		LC 24-Port (12 LC Duplex)	
Color	Phosphor Bronze Multimode Only	Zirconia Ceramic Single/Multimode	Phosphor Bronze Multimode Only	Zirconia Ceramic Single/Multimode	Phosphor Bronze Multimode Only	Zirconia Ceramic Single/Multimode
Aqua	FSPLCDM3AQ	FSPLCDS3AQ	FSPLCDM6AQ	FSPLCDS6AQ	FSPLCDM12AQ	FSPLCDS12AQ
Beige	FSPLCDM3BE	FSPLCDS3BE	FSPLCDM6BE	FSPLCDS6BE	FSPLCDM12BE	FSPLCDS12BE
Black	FSPLCDM3BK	FSPLCDS3BK	FSPLCDM6BK	FSPLCDS6BK	FSPLCDM12BK	FSPLCDS12BK
Blue	FSPLCDM3B	FSPLCDS3B	FSPLCDM6B	FSPLCDS6B	FSPLCDM12B	FSPLCDS12B
Green	FSPLCDM3GN	FSPLCDS3GN	FSPLCDM6GN	FSPLCDS6GN	FSPLCDM12GN	FSPLCDS12GN
Orange	FSPLCDM3OR	FSPLCDS3OR	FSPLCDM6OR	FSPLCDS6OR	FSPLCDM12OR	FSPLCDS12OR
Red	FSPLCDM3R	FSPLCDS3R	FSPLCDM6R	FSPLCDS6R	FSPLCDM12R	FSPLCDS12R
Violet	-	FSPLCDS3VI	-	FSPLCDS6VI	-	FSPLCDS12VI
Yellow	FSPLCDM3Y	FSPLCDS3Y	FSPLCDM6Y	FSPLCDS6Y	FSPLCDM12Y	FSPLCDS12Y

LC Quad FSP Adapter Panels

	LC 12-Port (3 LC Quad)		LC 24-Port (6 LC Quad)	
Color	Phosphor Bronze Multimode Only	Zirconia Ceramic Single/Multimode	Phosphor Bronze Multimode Only	Zirconia Ceramic Single/Multimode
Aqua	FSPLCQM3AQ	FSPLCQS3AQ	FSPLCQM6AQ	FSPLCQS6AQ
Beige	FSPLCQM3BE	FSPLCQS3BE	FSPLCQM6BE	FSPLCQS6BE
Black	FSPLCQM3BK	FSPLCQS3BK	FSPLCQM6BK	FSPLCQS6BK
Blue	FSPLCQM3B	FSPLCQS3B	FSPLCQM6B	FSPLCQS6B
Green	FSPLCQM3GN	FSPLCQS3GN	FSPLCQM6GN	FSPLCQS6GN
Orange	FSPLCQM3OR	FSPLCQS3OR	FSPLCQM6OR	FSPLCQS6OR
Red	FSPLCQM3R	FSPLCQS3R	FSPLCQM6R	FSPLCQS6R
Violet	-	FSPLCQS3VI	-	FSPLCQS6VI
Yellow	FSPLCQM3Y	FSPLCQS3Y	FSPLCQM6Y	FSPLCQS6Y

SC Duplex FSP Adapter Panels

	SC 6-Port (3 SC Duplex)		SC 12-Port (6 SC Duplex)	
Color	Phosphor Bronze Multimode Only	Zirconia Ceramic Single/Multimode	Phosphor Bronze Multimode Only	Zirconia Ceramic Single/Multimode
Aqua	FSPSCDM3AQ	FSPSCDS3AQ	FSPSCDM6AQ	FSPSCDS6AQ
Beige	FSPSCDM3BE	FSPSCDS3BE	FSPSCDM6BE	FSPSCDS6BE
Black	FSPSCDM3BK	FSPSCDS3BK	FSPSCDM6BK	FSPSCDS6BK
Blue	FSPSCDM3B	FSPSCDS3B	FSPSCDM6B	FSPSCDS6B
Green	FSPSCDM3GN	FSPSCDS3GN	FSPSCDM6GN	FSPSCDS6GN
Orange	FSPSCDM3OR	FSPSCDS3OR	FSPSCDM6OR	FSPSCDS6OR
Red	FSPSCDM3R	FSPSCDS3R	FSPSCDM6R	FSPSCDS6R
Yellow	FSPSCDM3Y	FSPSCDS3Y	FSPSCDM6Y	FSPSCDS6Y



FC Duplex, 6-Port
FSPFC6



SC Simplex, 6-Port
FSPSC6



SC/APC Simplex, 6-Port
FSPSCA6



ST Simplex, 6-Port
FSPST6



MPO Simplex, 6-Port
FSPMTPAQ6



Jack-Pack®, 4-Port
FSPHD4X

FC Simplex

Nickle Plate

Description	Zirconia Ceramic Sleeve
FC 6-port (6 FC)	FSPFC6
FC 8-port (8 FC)	FSPFCSS8

SC Simplex

Blue

Description	Phosphor Bronze Sleeve	Zirconia Ceramic Sleeve
SC 6-port (6 SC)	FSPSC6	FSPSCSS6
SC 8-port (8 SC)	FSPSC8	FSPSCSS8
SC 12-port (12 SC)	FSPSC12	FSPSCSS12

SC Simplex, APC

Green

Description	Zirconia Ceramic Sleeve
SC 6-port (6 SC)	FSPSCA6
SC 8-port (8 SC)	FSPSCA8
SC 12-port (12 SC)	FSPSCA12

ST-Style Simplex

Yellow

Description	Phosphor Bronze Sleeve	Zirconia Ceramic Sleeve
ST-style 6-port	FSPST6	FSPSTSS6
ST-style 8-port	FSPST8	FSPSTSS8

MT-RJ

Black

Description	Catalog No.
MT-RJ 6-port	FSPMTRJ6
MT-RJ 8-port	FSPMTRJ8

JACK-PACK®, Unloaded

Description	Catalog No.
Keystone 4-port	FSPHD4X
Keystone 6-port	FSPHD6X*

**Will not fit into FTU2 series, FTU4SP or FCR2U9SP enclosures.*

MPO, Standard Polarity*

Color	Application	Simplex 6-Port (72 Fiber)	Duplex 12-Port (144 Fiber)
Aqua	OM3/OM4	FSPMTPAQ6	FSPMTPDAQ6
Beige	OM1/OM2	FSPMTPBE6	FSPMTPDBE6
Black	Universal	FSPMTPBK6	FSPMTPDBK6
Green	Singlemode	FSPMTPGN6	FSPMTPDGN6
Violet	OM4	FSPMTPVI6	FSPMTPDVI6

*Standard MPO polarity is key-up/key-down. Reversed polarity is key-up/key-up.
Note: Compatible with 12- or 24-fiber MPO connectors.

MPO, Reversed Polarity*

Color	Simplex 6-Port (72 Fiber)
Gray	FSPMTPRPGY6



Blank Panel
FSPB



SC Simplex, 6-Port
FSPSC6X



SC Simplex, 8-Port
FSPSC8X



SC Duplex, 6-Port
FSPSCD3X



SC Duplex, 12-Port
FSPSCD6X

FSP Adapter Panels, Unloaded

Description	Catalog No.	Description	Catalog No.
Blank, snap-in	FSPB	4 SC duplex or LC quad	FSPSCD4X
6 SC simplex or LC duplex	FSPSC6X	6 SC duplex or LC quad	FSPSCD6X
8 SC simplex or LC duplex	FSPSC8X	6 ST-style	FSPST6X
12 SC simplex or LC duplex	FSPSC12X	8 ST-style	FSPST8X
3 SC duplex or LC quad	FSPSCD3X	6 MTP-style	FSPSC6X

Note: Use Hubbell snap mount or screw mount adapters (screws included).



ST/SC Duplex, 6-Port
FSPSCST3



ST/SC Duplex, 12-Port
FSPSCST6

SC to ST-Style Duplex FSP Panels

Description	Phosphor Bronze Sleeve	Zirconia Ceramic Sleeve
SC-ST 6-port, blue	FSPSCST3	FSPSCSTDS3
SC-ST 12-port, blue	FSPSCST6	FSPSCSTDS6

ST-Style Duplex FSP Adapter Panels

Description	Phosphor Bronze Sleeve	Zirconia Ceramic Sleeve
ST duplex, 6-port, blue	FSPSTD3	FSPSTDS3
ST duplex, 12-port, blue	FSPSTD6	FSPSTDS6



LC Duplex, Flush Mount
SFFLCSBW



LC Duplex, Standard
SFLCSBBK



SC Simplex, Flush Mount
SFFSCSBW



SC Simplex, Standard
SFSCSBOW

LC Duplex Keystone Adapters

Flush Mount, Zirconia Ceramic

Housing Color	Adapter Color							
	Aqua	Beige	Black	Blue	Green	Orange	Red	Yellow
Almond	SFFLCSAQAL	SFFLCSBEAL	SFFLCSBKAL	SFFLCSBAL	SFFLCSGNAL	SFFLCSORAL	SFFLCSRAL	SFFLCSYAL
Black	SFFLCSAQBK	SFFLCSBEBK	SFFLCSBKBK	SFFLCSBBK	SFFLCSGNBK	SFFLCSORBK	SFFLCSRBK	SFFLCSYBK
Gray	SFFLCSAQG	SFFLCSBEG	SFFLCSBK G	SFFLCSBG	SFFLCSGN G	SFFLCSORG	SFFLCSRG	SFFLCSYG
Ivory	SFFLCSAQEI	SFFLCSBEEI	SFFLCSBKEI	SFFLCSBEI	SFFLCSGNEI	SFFLCSOREI	SFFLCSREI	SFFLCSYEI
Light Almond	SFFLCSAQLA	SFFLCSBELA	SFFLCSBKLA	SFFLCSBLA	SFFLCSGNLA	SFFLCSORLA	SFFLCSRLA	SFFLCSYLA
Office White	SFFLCSAQOW	SFFLCSBEOW	SFFLCSBKOW	SFFLCSBOW	SFFLCSGNOW	SFFLCSOROW	SFFLCSROW	SFFLCSYOW
White	SFFLCSAQW	SFFLCSBEW	SFFLCSBKW	SFFLCSBW	SFFLCSGNW	SFFLCSORW	SFFLCSRW	SFFLCSYW

Standard, Zirconia Ceramic

Housing Color	Adapter Color							
	Aqua	Beige	Black	Blue	Green	Orange	Red	Yellow
Almond	SFLCSAQAL	SFLCSBEAL	SFLCSBKAL	SFLCSBAL	SFLCSGNAL	SFLCSORAL	SFLCSRAL	SFLCSYAL
Black	SFLCSAQBK	SFLCSBEBK	SFLCSBKBK	SFLCSBBK	SFLCSGNBK	SFLCSORBK	SFLCSRBK	SFLCSYBK
Gray	SFLCSAQG	SFLCSBEG	SFLCSBK G	SFLCSBG	SFLCSGN G	SFLCSORG	SFLCSRG	SFLCSYG
Ivory	SFLCSAQEI	SFLCSBEEI	SFLCSBKEI	SFLCSBEI	SFLCSGNEI	SFLCSOREI	SFLCSREI	SFLCSYEI
Light Almond	SFLCSAQLA	SFLCSBELA	SFLCSBKLA	SFLCSBLA	SFLCSGNLA	SFLCSORLA	SFLCSRLA	SFLCSYLA
Office White	SFLCSAQOW	SFLCSBEOW	SFLCSBKOW	SFLCSBOW	SFLCSGNOW	SFLCSOROW	SFLCSROW	SFLCSYOW
White	SFLCSAQW	SFLCSBEW	SFLCSBKW	SFLCSBW	SFLCSGNW	SFLCSORW	SFLCSRW	SFLCSYW

SC Simplex Keystone Adapters

Flush Mount, Zirconia Ceramic

Housing Color	Adapter Color							
	Aqua	Beige	Black	Blue	Green	Orange	Red	Yellow
Almond	SFFSCAQAL	SFFSCBEAL	SFFSCBKAL	SFFSCBAL	SFFSCGNAL	SFFSCORAL	SFFSCSRAL	SFFSCSYAL
Black	SFFSCAQBK	SFFSCBEBK	SFFSCBKBK	SFFSCBBK	SFFSCGNBK	SFFSCORBK	SFFSCRBK	SFFSCSYBK
Gray	SFFSCAQG	SFFSCBEG	SFFSCBK G	SFFSCBG	SFFSCGN G	SFFSCORG	SFFSCSRG	SFFSCSYG
Ivory	SFFSCAQEI	SFFSCBEEI	SFFSCBKEI	SFFSCBEI	SFFSCGNEI	SFFSCOREI	SFFSCSREI	SFFSCSYEI
Light Almond	SFFSCAQLA	SFFSCBELA	SFFSCBKLA	SFFSCBLA	SFFSCGNLA	SFFSCORLA	SFFSCSRLA	SFFSCSYLA
Office White	SFFSCAQOW	SFFSCBEOW	SFFSCBKOW	SFFSCBOW	SFFSCGNOW	SFFSCOROW	SFFSCSROW	SFFSCSYOW
White	SFFSCAQW	SFFSCBEW	SFFSCBKW	SFFSCBW	SFFSCGNW	SFFSCORW	SFFSCSRW	SFFSCSYW

Standard, Zirconia Ceramic

Housing Color	Adapter Color							
	Aqua	Beige	Black	Blue	Green	Orange	Red	Yellow
Almond	SFSCAQAL	SFSCBEAL	SFSCBKAL	SFSCBAL	SFSCGNAL	SFSCORAL	SFSCSRAL	SFSCSYAL
Black	SFSCAQBK	SFSCBEBK	SFSCBKBK	SFSCBBK	SFSCGNBK	SFSCORBK	SFSCRBK	SFSCSYBK
Gray	SFSCAQG	SFSCBEG	SFSCBK G	SFSCBG	SFSCGN G	SFSCORG	SFSCSRG	SFSCSYG
Ivory	SFSCAQEI	SFSCBEEI	SFSCBKEI	SFSCBEI	SFSCGNEI	SFSCOREI	SFSCSREI	SFSCSYEI
Light Almond	SFSCAQLA	SFSCBELA	SFSCBKLA	SFSCBLA	SFSCGNLA	SFSCORLA	SFSCSRLA	SFSCSYLA
Office White	SFSCAQOW	SFSCBEOW	SFSCBKOW	SFSCBOW	SFSCGNOW	SFSCOROW	SFSCSROW	SFSCSYOW
White	SFSCAQW	SFSCBEW	SFSCBKW	SFSCBW	SFSCGNW	SFSCORW	SFSCSRW	SFSCSYW

Note: Any green zirconia LC or SC adapter is suitable for APC applications.



MT-RJ Standard
SFMTRJ



MT-RJ Flush Mount
FAMTRJK



ST Simplex, Standard
SFSTOW



ST to SC Simplex, Standard
SFSCSTSOW



MPO Flush Mount
SFFMTPBKOW

MT-RJ Keystone Adapters

Housing Color	Standard	Flush Mount
Almond	SFMTRJAL	FAMTRJKAL
Black	SFMTRJBK	FAMTRJBKBK
Gray	SFMTRJG	FAMTRJKG
Ivory	SFMTRJEI	FAMTRJKEI
Light Almond	SFMTRJLA	FAMTRJKLA
Office White	SFMTRJ	FAMTRJK
Orange	–	FAMTRJKO
White	SFMTRJW	FAMTRJKW

ST-Style to SC Simplex Keystone Adapters

Housing Color	Zirconia Ceramic
Almond	SFSCSTSAL
Black	SFSCSTSBK
Gray	SFSCSTSG
Ivory	SFSCSTSEI
Light Almond	SFSCSTSAL
Office White	SFSCSTSOW
White	SFSCSTSOW

Note: Adapter is blue

ST-Style Keystone Adapters

Housing Color	Zirconia Ceramic
Almond	SFSTSAL
Black	SFSTSBK
Gray	SFSTSG
Ivory	SFSTSEI
Light Almond	SFSTSLA
Office White	SFSTSOW
White	SFSTSW

Note: Adapter is black oxide

MPO Flush Mount Keystone Adapters

Housing Color	Adapter Color			
	Aqua	Beige	Black	Green
Almond	SFFMTPAQAL	SFFMTPBEAL	SFFMTPBKAL	SFFMTPGNAL
Black	SFFMTPAQBK	SFFMTPBEBK	SFFMTPKBK	SFFMTPGNBK
Gray	SFFMTPAQG	SFFMTPBEG	SFFMTPBKG	SFFMTPGNG
Ivory	SFFMTPAQEI	SFFMTPBEEI	SFFMTPBKEI	SFFMTPGNEI
Light Almond	SFFMTPAQLA	SFFMTPBELA	SFFMTPBKLA	SFFMTPGNLA
Office White	SFFMTPAQOW	SFFMTPBEOW	SFFMTPBKOW	SFFMTPGNOW
White	SFFMTPAQW	SFFMTPBEW	SFFMTPBKW	SFFMTPGNW



LC Duplex, Snap Mount
FALCDS6B



LC Duplex, Screw Mount
FALCDSS6AQ



SC Duplex, Snap Mount
FASCDSC6GN



SC Duplex, Screw Mount
FASCDSS6B



SC Simplex, Snap Mount
FASCSSC12B

LC Adapters

LC Duplex; recommended cut out: 0.525" X 0.390"

Color	Snap mount, clip installed (6-pack), zirconia ceramic sleeve	Screw mount, clip installed, mounting screws included (6-pack), zirconia ceramic sleeve
Aqua	FALCDSC6AQ	FALCDSS6AQ
Beige	FALCDSC6BE	FALCDSS6BE
Black	FALCDSC6BK	FALCDSS6BK
Blue	FALCDSC6B	FALCDSS6B
Green	FALCDSC6GN	FALCDSS6GN
Orange	FALCDSC6OR	FALCDSS6OR
Red	FALCDSC6R	FALCDSS6R
Yellow	FALCDSC6Y	FALCDSS6Y

LC Quad; recommended cut out: 1.024" X 0.375"

Aqua	FALCQSC6AQ	FALCQSS6AQ
Beige	FALCQSC6BE	FALCQSS6BE
Black	FALCQSC6BK	FALCQSS6BK
Blue	FALCQSC6B	FALCQSS6B
Green	FALCQSC6GN	FALCQSS6GN
Orange	FALCQSC6OR	FALCQSS6OR
Red	FALCQSC6R	FALCQSS6R
Yellow	FALCQSC6Y	FALCQSS6Y

Note: Any green zirconia LC or SC adapter is suitable for APC applications.

SC Adapters

SC Duplex; recommended cut out: 1.024" X 0.375"

Color	Snap mount, clip installed (6-pack), zirconia ceramic sleeve	Screw mount, clip installed, mounting screws included (6-pack), zirconia ceramic sleeve
Aqua	FASCDSC6AQ	FASCDSS6AQ
Beige	FASCDSC6BE	FASCDSS6BE
Black	FASCDSC6BK	FASCDSS6BK
Blue	FASCDSC6B	FASCDSS6B
Green	FASCDSC6GN	FASCDSS6GN
Orange	FASCDSC6OR	FASCDSS6OR
Red	FASCDSC6R	FASCDSS6R
Yellow	FASCDSC6Y	FASCDSS6Y

SC Simplex; recommended cut out: 0.525" X 0.390"

Aqua	FASCSSC12AQ	FASCSS12AQ
Beige	FASCSSC12BE	FASCSS12BE
Black	FASCSSC12BK	FASCSS12BK
Blue	FASCSSC12B	FASCSS12B
Green	FASCSSC12GN	FASCSS12GN
Orange	FASCSSC12OR	FASCSS12OR
Red	FASCSSC12R	FASCSS12R
Yellow	FASCSSC12Y	FASCSS12Y

Note: Any green zirconia LC or SC adapter is suitable for APC applications.



ST Duplex,
Snap Mount
FASTDMPB6



ST to SC Duplex,
Snap Mount
FASTSCEMPB6



ST Simplex,
Bulkhead
FASTMPB12



MT-RJ
Snap Mount
FAMTRJMPB6



FC Simplex,
Bulkhead
FAFCSS6



MPO Duplex,
Screw Mount
FAMTPDSBK

ST-Style Adapters

Description	Recommended Cut-Out	Color	Phosphor Bronze Sleeve	Zirconia Ceramic Sleeve
Snap mount, clip installed, ST duplex*, 6-pack	Any SC duplex 1.024" x 0.375"	Beige Blue	FASTDMS6 FASTDMPB6	– –
Screw mount, clip installed, ST duplex, 6-pack	1.024" x 0.375"	Blue	–	FASTDSS6
Bulkhead, ST simplex, 12-pack, with nuts and washers	Dia. 0.38", flat 0.31" (Double D)	Black Oxide, Metal	FASTMPB12	FASTSS12

*These adapters can mount into unloaded FSP adapter panels (see page G11).

SC to ST-Style Adapters

Zirconia Ceramic Sleeve				
Description	Recommended SC Cut-Out	Color	Simplex, 12-Pack	Duplex, 6-Pack
Snap mount, clip installed	Simplex: 0.525" x 0.390" Duplex: 1.024" x 0.375"	Blue Orange Red Yellow	FASTSCSSC12 FASTSCSSC12OR FASTSCSSC12R FASTSCSSC12Y	FASTSCDSC6 FASTSCDSC6OR FASTSCDSC6R FASTSCDSC6Y
Phosphor Bronze Sleeve				
Screw mount, clip installed	Duplex: 1.024" x 0.375"	Blue	–	FASTSCMPB6

MPO Simplex Adapters

Standard Polarity				
Description	Recommended MPO Simplex Cut-Out	Color	Snap Mount	Screw Mount
Fits any SC simplex cut-out, 6-pack, compatible with 12- or 24-fiber MPO connectors	0.525" x 0.390"	Aqua Beige Black Green Violet	FAMTPAQ FAMTPBE FAMTPBK FAMTPGN FAMTPVI	FAMTPSAQ FAMTPSBE FAMTPSBK FAMTPSGN FAMTPSVI
Reversed Polarity				
		Gray	FAMTPRPGY	FAMTPSRPGY

Note: Standard MPO polarity is key-up/key-down. Reversed polarity is key-up/key-up.

MPO Duplex Adapters

Description	Recommended SC Duplex Cut-Out	Color	Snap Mount	Screw Mount
Fits any SC duplex cut-out, 6-pack	1.024" x 0.375"	Aqua Beige Black Green Violet	FAMTPDAQ FAMTPDBE FAMTPDBK FAMTPDGN FAMTPDVI	FAMTPDSAQ FAMTPDSBE FAMTPDSBK FAMTPDSGN FAMTPDSVI

FC Adapters

Description	Recommended Cut-Out	Finish	Zirconia Ceramic Sleeve
Bulkhead, singlemode, 6-pack	Dia. 0.38", flat 0.31" (Double D)	Nickel Plated	FAFCSS6

MT-RJ Adapters

Description	Recommended Cut-Out	Color	Snap Mount
Snap mount, clip installed, 6-pack	0.525" x 0.390" (SC simplex)	Aqua Beige Black	FAMTRJC6AQ FAMTRJMPB6 FAMTRJC6BK



Precision Cleaver
OFCLV5



Fiber Test Set
OFPM813, OFLS813



Fiber Microscope
OFSCOPE1



Epoxy Termination Kit
OFTK03C

Fiber Cleavers

Description	Catalog No.
Multimode fiber only	OFCLV3
SM or MM fiber, CT-30 style, with case	OFCLV4
SM or MM fiber, precision, with case	OFCLV5
Replacement blade	OFCLV5RB

Fiber Strip Tools

Description	Catalog No.
Universal 250/900 μ , 2.0, 2.5, 3.0mm cable	OFSTRIP2

Kevlar® Cable Scissors

Description	Catalog No.
For cutting Kevlar reinforced cables up to 24-strand, non-armored	OFSCRS

Visual Fault Locators (ST, SC, LC)

Includes: batteries, LC adapter, holster, wrist strap and end protectors

Description	Catalog No.
Visual fault locator	OFVFLKT1
LC adapter, separate	OFVLCADP

TIP: Use a VFL during termination for optimum test results.

Multimode Test Set

Includes: (1) power meter, (1) dual wavelength LED source, (1) soft pouch, batteries

Description	Catalog No.
Complete tester kit	OFPLK813A
Power meter dual wavelength	OFPM813
LED light source dual wavelength, multimode	OFLS813

Connector Installation Tool Pouch

Includes: sapphire scribe, scribe guide, black permanent marker, carbon fiber scissors, strip template and polishing fixture, ruler, buffer/cable jacket stripper, 200X microscope assembly, crimp tool and die

Description	Catalog No.
For SC/ST-style connectors crimp or adhesive termination	OFTP02C

Microscope, 400X

Includes: built-in illuminator, batteries, SC/ST-style adapter, and soft pouch

Description	Catalog No.
SC/ST-style microscope	OFSCOPE1
LC adapter (400X microscope only)	FOADPTLC

Microscope, 200X (ST, SC, LC)

Includes: batteries, LC adapter, and soft pouch

Description	Catalog No.
ST, SC, LC microscope	OFSCOPE2

Termination Kits, Epoxy

Includes: canned air, 10oz, tool pouch (OFTP02C) with fiber and cable preparation tools, wipes, heat cure epoxy, anaerobic adhesive and primer, polishing paper, polishing pad, heat-cure epoxy oven, safety glasses, syringes, needles, cure adapters and clips

For SC/ST-style connectors	Catalog No.
16-Port (110V AC)	OFTK03C
8-Port (220V AC)*	OFTK04C

*Does not contain canned air

Field Installation Tool Kit, Epoxy and Crimp Style

Includes:

- OFSTRIP2 fiber strip tool
- OFCMT04 crimp tool
- Universal 2.5mm and 1.25mm polishing pucks
- Polishing plate
- 70 durometer polishing pad
- Polishing paper
- 200X microscope with 2.5mm and 1.25mm universal adapters
- Carbon fiber scissors
- Reversible blade carbide scribe
- Permanent marker
- Protective glasses
- Debris bottle for fiber safety
- Alcohol wipes
- Lint free cleaning wipes
- Water bottle
- Alcohol bottle
- 6" ruler
- 10" long x 7" wide x 6.25" high carrying case with the lid functioning as a portable work surface

Description	Catalog No.
Field installation tool kit for SC/ST and LC connectors	OFTK05



Epoxy/Crimp Termination Kit
OFTK05

Note: See PROclick® connectors on page G3 for termination tool applications. Kevlar is a registered trademark of E. I. du Pont de Nemours and Company.



Anaerobic Adhesive Kit
OFAP



Loose Tube Break-Out Kit
OFBOKT6



Crimp Tool
OFCMT04



Scribe Tool and Guide
OFSCRIBE



Cable Management Clip
FBRMGTCPLK4

Epoxy Adhesive Kit

Includes: (6) tubes 1g, (6) syringes/needles

Description	Catalog No.
Easy mix 1g tubes	OFCEP

Anaerobic Adhesive Kit

Includes: Primer and adhesive, (10) syringes and (10) needles

Description	Catalog No.
Anaerobic adhesive kit cures in 6–10 seconds	OFCAP
Replacement bottle of primer only	OFPRIIME

Epoxy Cure Adapters

Includes: package of (6) adapters for heat cure oven

Description	Catalog No.
SC/ST-style	OFCA
LC	OFCALC

Loose Tube OSP Cable Break-Out Kits

Includes: tube kit, break-out block and crimp bushing

Description	Catalog No.
6-fiber break-out kit	OFBOKT6
12-fiber break-out kit	OFBOKT12

Fiber Cable Management Radius Clips

Includes: pack of (4) self-adhering clips with bend radius control element

Description	Catalog No.
Cable clips	FBRMGTCPLK4

LC Duplex Connector Extraction Tool

Includes: (1) tool, individually packaged, ideal for servicing high density interconnections

Description	Catalog No.
Connector extraction tool	OFLCDOOL1

Crimp Tool

Dual hex cavity: 0.178"/0.151", flat crimp 0.052", hex crimp 0.136", hardened die

Description	Catalog No.
For SC/ST-style epoxy/anaerobic or crimp style connectors	OFCMT04
Crimp dies	OFCMD04

Hand Scribe Tool

Includes: (1) tool and scribe guide

Description	Catalog No.
Sapphire blade	OFSCRIBE

Scribe Guide Fixture

6-pack

Description	Catalog No.
Suitable for SC, ST-style, or LC connectors	OFSG

Polishing Fixture

Includes: (1) stainless steel puck, polished surface; SC/ST-style or LC compatible

Description	Catalog No.
SC/ST-style	OFPUCK
LC	OFPUCKLC

Polishing Film

Includes: (25) each of 5 μ , 1 μ and 0.3 μ sheets, (1) polishing pad

Description	Catalog No.
Replacement kit	OFLFP

OPTISOK® Pulling Grips

Bundle Size Range	Catalog No.
0.125–0.562"	CCPS1
0.250–0.750"	CCPS2
0.750–1.750"	CCPS3

Fusion Splice Sleeves

25-pack

Description	Catalog No.
40mm length, 10mm cleave	FSHST401025
12-fiber ribbon	FRSHST401025

Fiber Management Spool

2-pack

Description	Catalog No.
Adhesive mount, yellow	OFSPoolPK2

Fusion Splice Trays

Description	Catalog No.
Aluminum, 12-fiber	STRAY12F
Aluminum, 24-fiber	STRAY24F
Plastic, yellow, 24-fiber	OFSPKLT24F



Cleaning Kit without Clicker Cleaners
OFCLEANKT1



Cleaning Kit with Clicker Cleaners
OFCLEANKT2



Clicker Cleaner LC/MU/APC
OFCLICK750LC



Cleaning Sticks SC/FC/APC
OFSTIX50SC



Cloth Wipes Cartridge
OFWIPES400

Cleaning Kit 1 without Sticklers® CleanClicker®

Includes:

- Optical fiber cleaning fluid, 3oz, non-hazardous
- (2) packs of 50 LC/MU cleaning sticks
- (2) packs of 50 SC/FC cleaning sticks
- (1) box of 400 lint-free wipes
- (1) dispenser of 90 lint-free wipes
- Instructions on product packaging
- Protective carrying bag

Description	Catalog No.
Cleaning kit without clickers	OFCLEANKT1

Cleaning Kit 2 with Sticklers® CleanClicker®

Includes:

- LC/MU clicker cleaner, 750 clicks
- SC/FC clicker cleaner, 750 clicks
- MPO clicker cleaner, 600 clicks
- Optical fiber cleaning fluid, 3oz, non-hazardous
- (2) packs of 50 LC/MU cleaning sticks
- (2) packs of 50 SC/FC cleaning sticks
- (1) box of 400 lint-free wipes
- (1) dispenser of 90 lint-free wipes
- Instructions on product packaging
- Protective carrying bag

Description	Catalog No.
Cleaning kit with LC, SC, MPO clickers	OFCLEANKT2

Sticklers® CleanClicker®, SC/ST/FC/APC

Includes: (1) disposable cleaner tape cartridge

Description	Catalog No.
2.5mm, SC/FC/APC	OFCLICK750SC

Sticklers® CleanClicker®, LC/MU/APC

Includes: (1) disposable cleaner tape cartridge

Description	Catalog No.
2.5mm, LC/MU/APC	OFCLICK750LC

Sticklers® CleanClicker®, MPO/APC

Includes: (1) disposable cleaner tape cartridge

Description	Catalog No.
MPO male, female, flat/APC	OFCLICK600MPO

Sticklers® CleanStixx™, LC/MU/APC

Includes: (1) pack of 50 disposable cleaning sticks

Description	Catalog No.
LC/MU/APC 1.25mm port cleaning sticks	OFSTIX50LC

Sticklers® CleanStixx™, SC/ST/FC/APC

Includes: (1) pack of 50 disposable cleaning sticks

Description	Catalog No.
SC/FC/APC 2.50mm port cleaning sticks	OFSTIX50SC

Sticklers® Cleaning Fluid, Optical

Includes: (1) 3oz pump dispenser

Description	Catalog No.
3oz cleaning fluid, pump, non-hazardous	OFCLEANER3OZ

Sticklers® CleanWipes™, Cartridge

Includes: (1) 4-slot box

Description	Catalog No.
Box of 100 lint-free sheets, 4 wipes/sheet	OFWIPES400

Sticklers® CleanWipes™, Dispenser

Includes: (1) roll of 90 sheets

Description	Catalog No.
Tube of 90 lint-free sheets, multi-purpose	OFWIPES90

Sticklers, CleanClicker, CleanStixx and CleanWipes are trademarks of MicroCare.