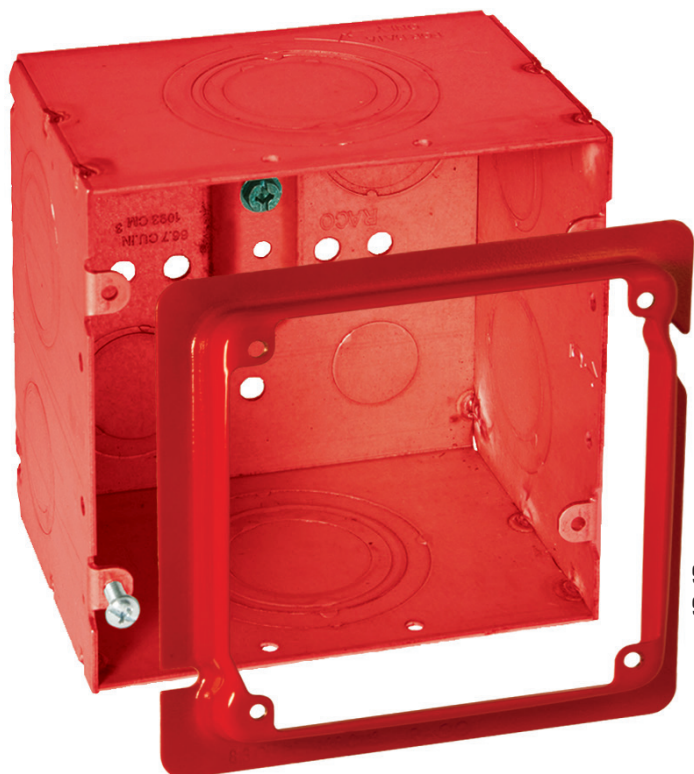




LIFE SAFETY APPLIANCE BACK BOX 66.7 Cubic Inches



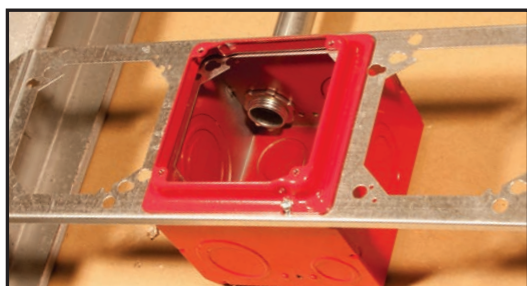
911-15 with
911-16 Adapter

Application

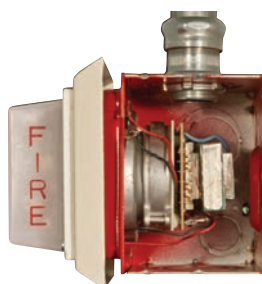
A large capacity back box used for life safety appliance applications (speaker strobe). Provides ample space for large appliances. Extra large knockouts for pulling pre-terminated cables.

Features

- 4-11/16" square, 3-1/4" deep box
- Accepts all 4-11/16" square covers and mud rings
- Painted red for system identification
- Includes knockouts - 1/2" through 2"
- Pre-installed ground screw
- Raised ground screw surface
- Mounts on existing 4-11/16" square box positioning brackets
- Use with 4-11/16" sq. x 4" sq. adapter ring - Cat. No. 911-16
- cULus Listed



Works with most standard box
positioning brackets



Accepts Largest Life Safety
Notifier Appliances



Never build a deep
box again



Catalog No.	Description	Knockouts Sides	Knockouts Back	Std. Pkg.	Cubic Inch Capacity
911-15	3-1/4" Depth Back Box, Welded, 4-11/16" Sq.	2, 3/4" - 1" TKO; 2, 1" - 1-1/4" TKO; 2, 1" - 2" Conc. KO	2, 3/4" - 1" TKO; 2-1/2"	10	66.7
911-16	4-11/16" Sq. x 4" Sq. Adapter, 5/8" Raised	—	—	25	8.3
911-17	4-11/16" Sq. x 4" Sq. Adapter, 1-1/4" Raised	—	—	12	16.0