



WIEGMANN®

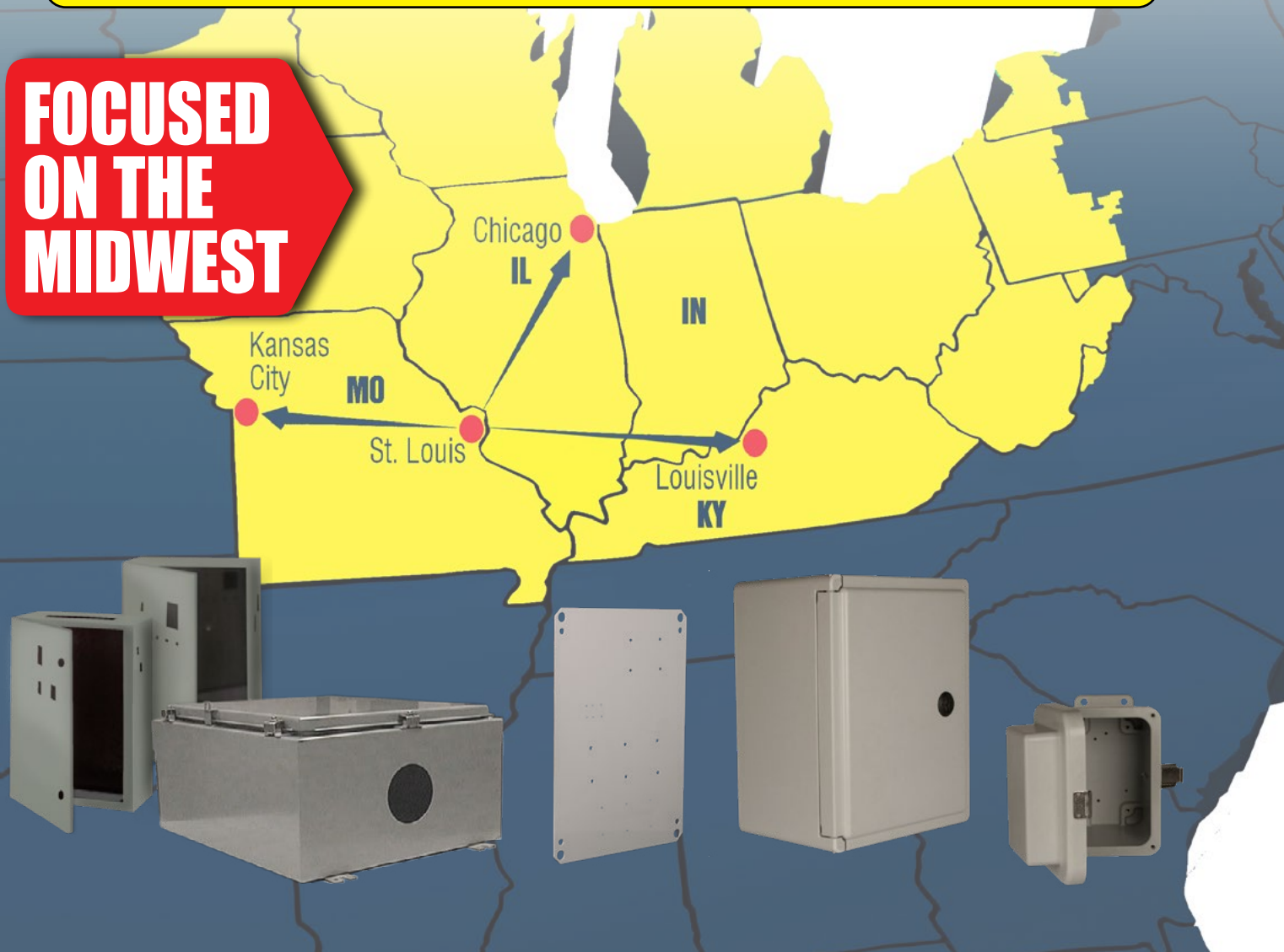
Commercial and Industrial Enclosures

MODCENTER

Our customizing process provides expedited shipments throughout the Midwest!

Our CNC machining center modifies enclosures and panels faster than ever. Onsite Freeburg, IL plant, can provide great service to St. Louis, Chicago, Louisville, Kansas City and the entire Midwest. Only 2-3 day turnaround for in-stock carbon and stainless steel items. Once customs are produced on the ModCenter, we can ship in 24 hours.

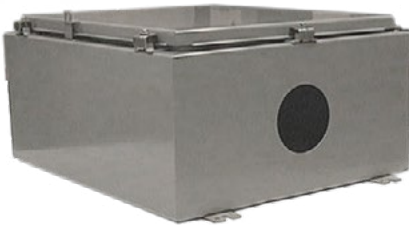
**FOCUSED
ON THE
MIDWEST**



CNC MACHINING CENTER DESIGNED SPECIFICALLY TO MODIFY ENCLOSURES AND PANELS.

**3-5 DAY
LEAD TIME**

*Approved Drawing
Required*



Stainless steel

STAINLESS STEEL				
Numbers in () represent total part numbers available within family				
PRODUCT LINE	ULTIMATE SERIES	N4 WALL-MOUNT SERIES	3PT WALL-MOUNT SERIES	JIC SERIES
	N412SSC (52), N412WSSC (21) N412CSSST (18) N412CSSSTD (5) N412SS3PT (26) N412SSA3PT (26)	SSN4 (76), ALN4 (16), SSN4X (9)	SSN43PT (13), SSN43PTA (13) SSN4WF3PT (12)	BN4SS (8), BN4CHSS (16), BN4CHAL (6), BN4CHQTSS (14), BN4CHQTSSA (14)
Size Ranges	12x12x6 to 60x36x12	16x12x6 to 60x36x16	24x20x6 to 36x36x12	4x4x3 to 16x14x6
Key Features	<ul style="list-style-type: none"> Aesthetic, attractive, sleek design. Accessory driven product line. Larger Sub Panel foot prints (sub panels are optional). Larger tub openings. 	<ul style="list-style-type: none"> Rugged workhorse. Clamps on three sides of door provides for an excellent seal. Padlocking provision. 	<ul style="list-style-type: none"> Rugged workhorse. Simple 3pt latching access. 	<ul style="list-style-type: none"> Single door junction boxes. Hinge cover. Lift off cover.
Standard Features	<ul style="list-style-type: none"> Available in 304 or 316L SS Plasma welded seams Removable & interchangeable doors Print Pocket Solid or Plexiglass doors FIP gasket 1/4 turn latches Rear mounting holes 20 Degree sloped top on ST series Smooth #4 preprained finish. 	<ul style="list-style-type: none"> Available in 304 or 316L SS Available in .080 aluminum Seam welded design Continuous hinge Print Pocket Clamps three sides FIP gasket Hasp & staple (padlocking) External mtg feet top & bottom Optional sub panels Smooth #4 preprained finish. 	<ul style="list-style-type: none"> Available in 304 or 316L SS Seam welded design Continuous hinge Print Pocket 3pt latching handle FIP gasket External mtg feet top & bottom Optional sub panels Smooth #4 preprained finish. 	<ul style="list-style-type: none"> Available in 304 or 316L SS Seam welded design Continuous or lift off hinge Clamp secured lid FIP gasket External mtg feet top & bottom Optional sub panels Smooth #4 preprained finish.
Ratings	NEMA Type 3R, 4, 4X, 12, 13 UL & CSA, IP66	NEMA Type 3R, 4, 4X, 12, 13 UL & CSA, IP66	NEMA Type 3R, 4, 4X, 12, UL Pending	NEMA Type 3R, 4, 4X, 12, UL & CSA, IP66



Carbon steel

MILD STEEL - NEMA 4 - ANSI 61				
Numbers in () represent total part numbers available within family				
PRODUCT LINE	ULTIMATE SERIES	WALL-MOUNT SERIES	3PT WALL-MOUNT SERIES	JIC SERIES
	N412C (46), N412WC (27) N412CST (25).	N4 (40)	N43PT (40) N4123PTC (44)	BN4 (8) BN4CH (10) BN4CHQT (14)
Size Ranges	12x12x6 to 60x36x12	16x12x6 to 60x36x16	24x20x6 to 36x36x12	4x4x3 to 16x14x6
Key Features	<ul style="list-style-type: none"> Aesthetic, attractive, sleek design. Accessory driven product line. Larger Sub Panel foot prints (sub panels are optional). Larger tub openings. 	<ul style="list-style-type: none"> Rugged workhorse. Clamps on three sides of door provides for an excellent seal. Padlocking provision. 	<ul style="list-style-type: none"> Rugged workhorse. Simple 3pt latching access. 	<ul style="list-style-type: none"> Single door junction boxes. Hinge cover. Lift off cover.
Standard Features	<ul style="list-style-type: none"> Concealed hinges Plasma welded seams Removable & interchangeable doors Print Pocket Solid or Plexiglass doors FIP gasket 1/4 turn latches Rear mounting holes 20 Degree sloped top on ST series ANSI 61 polyester powder. 	<ul style="list-style-type: none"> Seam welded design Continuous hinge Print Pocket Clamps three sides FIP gasket Hasp & staple (padlocking) External mtg feet top & bottom Optional sub panels ANSI 61 polyester powder. 	<ul style="list-style-type: none"> Seam welded design Continuous hinge Print Pocket 3pt latching handle FIP gasket External mtg feet top & bottom Optional sub panels ANSI 61 polyester powder. 	<ul style="list-style-type: none"> Seam welded design Continuous or lift off hinge Clamp secured lid FIP gasket External mtg feet top & bottom Optional sub panels ANSI 61 polyester powder.
Ratings	NEMA Type 3R, 4, 4X, 12, 13 UL & CSA, IP66	NEMA Type 3R, 4, 4X, 12, 13 UL & CSA	NEMA Type 3R, 4, 4X, 12, UL, UL Pending on N43PT	NEMA Type 3R, 4, 4X, 12, 13 UL & CSA, IP66

Carbon steel



MILD STEEL - NEMA 12 - ANSI 61 POLYESTER POWDER			
Numbers in () represent total part numbers available within family			
PRODUCT LINE	JIC SERIES	N12 WALL-MOUNT SERIES	DISCONNECT WALL-MOUNT SERIES
	B (14), BCH (22), BCHS (4), BSC (16), WAGIE (11), JIC (3), TCH (32), BCHL (20) BCHQR (7)	N12 (85), WAWF (12), WAFM (5)	SDN12 (32), SDN12PL (31), ABN12 (11), N412CSTD (8), N412CSSSTD (5)
Size Ranges	4 x 4 x 3 to 16 x 14 x 10	16 x 12 x 6 to 72 x 30 x 16	20 x 21 x 8 to 60 x 38 x 16
Key Features	<ul style="list-style-type: none"> Variety of cover options 	<ul style="list-style-type: none"> Rugged workhorse Single or two door options Clamps (single door) 3pt handle (two door) 	<ul style="list-style-type: none"> Disconnects designed to accept most major handle offerings
Standard Features	<ul style="list-style-type: none"> Single door junction enclosures Lift off cover Continuous hinge Screw cover Quick release Seam welded construction External mtg feet top & bottom Optional sub panels SS hinge pin ANSI 61 polyester powder 	<ul style="list-style-type: none"> Single door (clamps, hasp & staple) Two door (3pt keylocking handle) Continuous hinge SS hinge pin External mtg feet top & bottom FIP gasket Hasp & staple (padlocking) External mtg feet top & bottom Seam welded construction Optional sub panel FIP (single door) Print pocket ANSI 61 polyester powder 	<ul style="list-style-type: none"> Single door Continuous hinge SS hinge pin External mtg feet top & bottom Optional sub panel FIP (single door) Print pocket ANSI 61 polyester powder
Ratings	NEMA Type 12, 13 UL & CSA	NEMA Type 12, 13 UL & CSA	NEMA Type 4, 4X, 12, 13 UL & CSA



MILD/GALVANIZED STEEL - NEMA 1/3R - COMMERCIAL CONTRACTOR					
Numbers in () represent total part numbers available within family					
PRODUCT LINE	SC & A SERIES	N1C SERIES	RSC-RHC-LOH SERIES	WCT-CTSD-DTDD SERIES	WAGSC SERIES
	SC (63), SCNK (72), SCG (59), SCGNK (72), ACAB (31)	N1CS (19), N1CLP (27), N1CL(6)	RSC (44), RSCG (44), RHCS (7), RHCM (17), LOH (10)	WCT (5), CTSD (8), CTDD (11)	WAGSC (22), WAGSCG (22)
Size Ranges	4 x 4 x 4 to 24 x 36 x 12	6 x 6 x 4 to 48 x 37 x 17	4 x 4 x 4 to 60 x 16 x 12	24 x 24 x 12 to 48 x 48 x 16	8 x 6 x 4 to 36 x 36 x 12
Key Features	<ul style="list-style-type: none"> W/KO, NO/KO options Carbon or Galvanized options Painted or Galvanized ACAB=NOKO/Hinge cover 	<ul style="list-style-type: none"> N1C's available in three different configurations: small, medium Clamps (single door) and large 	<ul style="list-style-type: none"> Three available configurations: Screw Cover (reversible), Hinge Cover (continuous), and Lift Off 	<ul style="list-style-type: none"> Two lid configurations: Screw Cover and Hinge Cover (single/double door) 	<ul style="list-style-type: none"> Seam Welded Screw Cover Available in Galv (no paint), and C/S (ANSI 61 polyester powder)
Standard Features	<ul style="list-style-type: none"> Flat removable covers Wall-mounting holes With or without KO's Shrink wrapped Painted = ANSI 61 Polyester Powder Unpainted = Galvanized steel ACAB = Hinge cover/noko/ANSI 61 only 	<ul style="list-style-type: none"> Continuous or butt hinge versions N1CS & N1CLP; w/rear mtg holes N1CL: mtg feet top & bottom With 1/4 turn latches With sub panel mtg provisions (sub panels optional) Grounding provisions ANSI 61 Polyester powder 	<ul style="list-style-type: none"> RSC/RHC With KO's Drip hoods Padlocking provisions (RSC/RHC) w/wall-mounting provisions (sub panels optional) Grounding provisions ANSI 61 polyester powder (LOH) Wall mtg & sub panel provisions optional (RSC) also available in galv only 	<ul style="list-style-type: none"> Single or two door options N3R drip lip or hood Padlocking/meter seal provisions CTSD/CTDD with sub panel mtg provisions (panels optional) Grounding provisions CTSD/CTDD have lift off hinges ANSI 61 Polyester powder 	<ul style="list-style-type: none"> Gasketed screw cover Seam welded tub With captive rivnuts Grounding provisions GALV no pain Carbon steel painted ANSI 61 Polyester powder Painted = ANSI 61 Polyester powder Unpainted = galvanized steel
Ratings	NEMA Type 1 UL & CSA	NEMA Type 1 UL & CSA	NEMA Type 1, 3R UL & CSA	NEMA Type 12, 13 UL & CSA	NEMA Type 1, 3R, 4 UL & CSA

- Saves a significant amount of time and money when compared to traditional modification techniques
- All **in-stock and standard** carbon steel, stainless steel, and non-metallic enclosures are available for modification
- Drills, taps, and mills standard enclosures and panels



**3-5 DAY
LEAD TIME**
*Approved Drawing
Required*



NP Series back panels for NEMA 1, 3R, 4, 4X and 12 Wall-Mount Enclosures

- Painted Steel
- Galvanized
- 304 Stainless Steel
- Aluminum

P Series back panels for JIC Enclosures

- Painted steel
- Galvanized
- 304 Stainless Steel
- Aluminum

NP_C Series back panels for Ultimate N412C Enclosures

- Painted Steel
- Galvanized
- 304 Stainless Steel
- 316 Stainless Steel

N1P Series back panels for N1C and RHC Enclosures

- Painted Steel
- Galvanized

BACK PANELS FOR NEMA 1, 3R, 4, 4X & 12 WALL-MOUNT ENCLOSURES

Painted Steel (White)	Galvanized	304 Stainless Steel	Aluminum
NP1212	NP1212G	—	—
NP1224	NP1224G	—	—
NP1612	NP1612G	NP1612SS	ALNP1612
NP1616	NP1616G	NP1616SS	ALNP1616
NP1620	NP1620G	—	—
NP1818	—	—	—
NP2012	NP2012G	—	—
NP2016	NP2016G	NP2016SS	ALNP2016
NP2024	NP2024G	—	—
NP2020	NP2020G	NP2020SS	ALNP2020
NP2412	NP2412G	—	—
NP2416	NP2416G	NP2416SS	—
NP2420	NP2420G	NP2420SS	ALNP2420
NP2424	NP2424G	NP2424SS	ALNP2424
NP2430	NP2430G	—	—
NP3016	NP3016G	—	—
NP3020	NP3020G	NP3020SS	—
NP3024	NP3024G	NP3024SS	ALNP3024
NP3030	NP3030G	NP3030SS	—
NP3036	NP3036G	—	—
NP3042	NP3042G	—	—
NP3624	NP3624G	NP3624SS	ALNP3624
NP3630	NP3630G	NP3630SS	ALNP3630
NP3636	NP3636G	NP3636SS	—
NP3642	NP3642G	—	—
NP4024	NP4024G	—	—
NP4224	NP4224G	—	—
NP4230	NP4230G	NP4230SS	—
NP4236	NP4236G	NP4236SS	—
NP4824	NP4824G	—	—
NP4830	NP4830G	—	—
NP4836	NP4836G	NP4836SS	ALNP4836
NP6030	NP6030G	—	—
NP6036	NP6036G	NP6036SS	ALNP6036
NP7230	NP7230G	—	—
NP7236	NP7236G	—	—

NP-C SERIES BACK PANELS FOR ULTIMATE N412C ENCLOSURES

Painted Steel	Galvanized	304 Stainless Steel	316 Stainless Steel
NP1212C	NP1212CG	NP1212SSC	—
NP1414C	NP1414CG	NP1414SSC	—
NP1612C	NP1612CG	NP1612SSC	NP1612SSAC
NP1616C	NP1616CG	NP1616SSC	—
NP2016C	NP2016CG	NP2016SSC	—
NP2416C	NP2416CG	NP2416SSC	NP2416SSAC
NP2020C	NP2020CG	NP2020SSC	NP2020SSAC
NP2420C	NP2420CG	NP2420SSC	—
NP3020C	NP3020CG	—	—
NP2424C	NP2424CG	NP2424SSC	NP2424SSAC
NP3024C	NP3024CG	NP3024SSC	NP3024SSAC
NP3624C	NP3624CG	NP3624SSC	—
NP4024C	NP4024CG	—	—
NP4824C	NP4824CG	—	—
NP2430C	NP2430CG	—	—
NP3030C	NP3030CG	NP3030SSC	—
NP3630C	NP3630CG	NP3630SSC	—
—	NP4230CG	—	—
NP3636C	NP3636CG	NP3636SSC	NP3636SSAC
NP4236C	NP4236CG	NP4236SSC	NP4236SSAC
NP4836C	NP4836CG	NP4836SSC	NP4836SSAC
—	NP5236CG	—	—
NP6036C	NP6036CG	NP6036SSC	NP6036SSAC

BACK PANELS FOR N1C & RHC ENCLOSURES

Painted Steel	Galvanized
N1P0606	N1P0606G
N1P0608	N1P0608G
N1P0808	N1P0808G
N1P0810	N1P0810G
N1P1010	N1P1010G
N1P1012	N1P1012G
N1P1212	N1P1212G
N1P1214	N1P1214G
N1P1216	N1P1216G
N1P1220	N1P1220G
N1P1216L	—
N1P1616	—
N1P1620	—
N1P2016	—
N1P2020	—
N1P1624	—
N1P2024	—
N1P2424	—
N1P2030	—
N1P2436	—
N1P2420	—
N1P2430	—
N1P3030	—
N1P036	—

BACK PANELS FOR JIC ENCLOSURES

Painted Steel (White)	Galvanized	304 Stainless Steel	Aluminum
P0604	P0604G	P0604SS	P0604AL
P0606	P0606G	P0606SS	P0606AL
P0806	P0806G	P0806SS	P0806AL
P0808	P0808G	—	—
P1008	P1008G	P1008SS	P1008AL
P1010	P1010G	—	—
P1206	P1206G	—	—
P1210	P1210G	P1210SS	P1210AL
P1212	P1212G	P1212SS	—
P1408	P1408G	—	—
P1412	P1412G	P1412SS	P1412AL
P1610	P1610G	—	—
P1614	P1614G	P1614SS	P1614AL

- CNC machining center will drill and tap holes for installation of electrical equipment
- 3 - 5 day turnaround with approved drawing
- Saves a significant amount of time and money when compared to traditional modification techniques
- Panels are in stock and ready to go
- Machining center will accommodate large back panels and swing panels as well. *(Subject to stock availability)*
- Max back panel 90" x 61"



COMMERCIAL CONSTRUCTION
A Division of Hubbell Incorporated (Delaware)

© 2020 Hubbell. All rights reserved. Information subject to change. Trademarks are property of their respective owners.

Hubbell Canada Inc.
905-839-1138

Hubbell de Mexico, S.A. de C.V.
52-55-9151-9999

Wiegmann
Freeburg, IL
618-539-3193

hubbell.com/wiegmann/en



WG_SEL_026_MODCNTR Group rev1
07/20