



WIEGMANN

Hubbell-Wiegmann Product Training





WIEGMANN

Commercial Contractor Products

NEMA 1 and 3R enclosures

- SC**, SCREW COVER SERIES, NEMA 1
- A**, HINGE COVER SERIES, NEMA 1
- N1C**, "SMALL" HINGE COVER SERIES, NEMA 1
- N1C**, "MEDIUM" HINGE COVER SERIES, NEMA 1
- N1C**, "LARGE" HINGE COVER SERIES, NEMA 1
- RSC**, SCREW COVER SERIES, NEMA 1
- RHC**, "SMALL" HINGE COVER, NEMA 3R
- RHC**, "MEDIUM" HINGE COVER, NEMA 3R
- LOH**, HINGE COVER, NEMA 3R
- WCT**, SCREW COVER, NEMA 3R
- CT & CTDD**, HINGE COVER, NEMA 3R
- RSCG**, SCREW COVER WIRING TROUGH SERIES, NEMA 3R
- HS & S**, NEMA 1 HINGE & SCREW COVER SYSTEMS





WIEGMANN

SC Screw Cover and “A” Cabinet enclosures

SC

(i.e. SC060604GNK)

- Commercial (NEMA 1)
- Spot welded construction
- Wrapper design/spot welded back
- Key-way cover
- Available in Galvanized
- Available in ANSI 61 polyester powder version
- Available with/without KO's

• **SIZES:** 4x4x4 – 36X36X12



“A” Cabinet

(i.e. A060804)

- Commercial (NEMA 1)
- Spot welded construction
- Wrapper design/spot welded back
- Removable hinge cover
- Friction door catch w/ring pull
- ANSI 61 polyester powder finish
- Available only with KO's

• **SIZES:** 4x5x3 – 24x36x8



Designed primarily for indoors



WIEGMANN

N1C, “SMALL & MEDIUM” enclosures

N1C, “SMALL”

(i.e. N1C060604)

- Commercial (NEMA 1)
- Spot welded construction
- Wrapper design/spot welded back
- 1/4 turn coin latch
- Continuous hinge
- Weld nuts for mounting optional sub panels
- No KO
- ANSI 61 polyester powder finish



SIZES: 6x6x4 - 12x20x6

N1C, “MEDIUM”

(i.e. N1C161606LP)

- Commercial (NEMA 1)
- Plasma (seam) welded design
- 1/4 turn latch
- Butt hinges
- Collar studs for mounting optional sub panels
- No KO
- ANSI 61 polyester powder finish



SIZES: 12x16x6 - 30x36x12

Designed primarily for indoors



WIEGMANN

N1C, "LARGE" enclosures

N1C, "LARGE"

(i.e. N1C304209)

- Commercial (NEMA 1)
- Plasma (seam) welded design
- 1/4 turn latch
- Wall mounting feet top and bottom
- Continuous hinged door
- Door/body stiffeners provided
- Collar studs for mounting optional sub panels
- No KO
- ANSI 61 polyester powder finish



SIZES: 30x42x9 - 36x48x17

Designed primarily for indoors



WIEGMANN

RSC enclosures

RSC

(i.e. RSC081206)

- Commercial (NEMA 3R)
- Spot welded design
- Drip top design
- Slip on reversible cover
- Hasp and meter seal
- With and W/O KO's (8" and deeper are No KO)
- ANSI 61 polyester powder finish
- Also available in pre-galvanized finish (unpainted)

SIZES: 4x4x4 - 36x48x16



Designed primarily for outdoors



WIEGMANN

RHC, “SMALL” & “MEDIUM” enclosures

RHC, “SMALL” (i.e. RHC060804)

- Commercial (NEMA 3R)
- Spot welded construction
- Padlockable draw catch
- Mounting feet top/bottom
- Stainless hinge pin
- With KO's
- Weld nuts for mounting optional sub panels
- ANSI 61 polyester powder finish



SIZES: 6x6x4 - 12x12x6

RHC, “MEDIUM” (i.e. RHC201606)

- Commercial (NEMA 3R)
- Plasma (seam) welded design
- Hasp and staple
- Mounting feet top/bottom
- Stainless hinge pin
- No KO's
- With collar studs for mounting optional sub panels
- ANSI 61 polyester powder finish



SIZES: 16x12x6 - 48x36x16

Designed primarily for outdoors



WIEGMANN

LOH enclosures

LOH

(i.e. LOH121206)

- Commercial (NEMA 3R)
- Spot welded construction
- Drip cap
- Padlockable draw latches
- Lift off hinges
- Stainless hinge pins
- No KO's
- Optional wall mounting feet available
- Optional panel mounting kit available

SIZES: 8x6x4 - 30x24x8



Designed primarily for outdoors



WIEGMANN

WCT enclosures

WCT

(i.e. WCT242412)

- Commercial (NEMA 3R)
- Smooth seamless sides
- Tack welded construction
- Wall mounting holes
- Drip cap
- Removable slip on cover
- Door handles
- Hasp for padlocking or meter seal
- ANSI 61 polyester powder finish



SIZES: 24x24x12 - 48x36x16

Designed primarily for outdoors



WIEGMANN

CT & CTDD enclosures

CT

(i.e. CT242412)

- Commercial (NEMA 3R)
- Smooth seamless sides
- Seam welded construction
- Wall mounting holes
- Drip cap
- Meter seal provisions
- Lift off hinges
- ¼ turn latch
- Collar studs for mounting optional sub panel
- ANSI 61 polyester powder finish



CTDD

(i.e. CTDD363212)

- Commercial (NEMA 3R)
- Smooth seamless sides
- Seam welded construction
- Wall mounting holes
- Drip cap
- Lift off hinges
- T door handle
- Meter seal provisions
- Collar studs for mounting optional sub panel
- ANSI 61 polyester powder finish



**SIZES: 12x18x10 -
30x36x12**

**SIZES: 30x24x10 -
48x48x16**

Designed primarily for outdoors



WIEGMANN

RSCG enclosures

RSCG

(i.e. RSCG040460G)

- Commercial wiring troughs (NEMA 3R)
- Spot welded construction
- Drip cap
- Embossed wall mounting holes
- Slip-on removable cover
- With KO's
- Painted version offers an ANSI 61 polyester powder finish
- Galvanized version is unpainted

SIZES: 4x4x12 - 8x8x72



Designed primarily for outdoors



WIEGMANN

HS, S wire way

HS, S Wire way

(i.e. HS225, S2260NK)

- Commercial (NEMA1)
- Offered in Hinge Cover or Screw Cover
- Covers on HS Series are held in place by combination hinge/screw
- Covers on S Series are held in place by screw fasteners
- 2 1/2", 4", 6", & 8" offered with or without KO's
- KO's are provided on two sides
- 10" & 12" no KO's
- ANSI 61 polyester powder finish
- Very competitively priced
- S series available in unpainted GALVANIZED

Sizes: 2 1/2", 4", 6", 8", 10", 12" (10"=S series only)

Designed primarily for indoors





WIEGMANN

*Please feel free to utilize the
Hubbell-Wiegmann Engineering
Catalog while completing the
Product Quiz sections.*



WIEGMANN

Product Quiz

- 1) Wiegmann offers products that fall into the following NEMA groups:
 - a) NEMA1, NEMA12, NEMA4, NEMA 6
 - b) NEMA1, NEMA12, NEMA4X, NEMA 6, NEMA 9
 - c) NEMA1, NEMA3R, NEMA12, NEMA4, NEMA4X
 - d) NEMA1, NEMA3R, NEMA12, NEMA4, NEMA4X, NEMA6, NEMA9

- 2) Screw Cover Pull Boxes meet what rating?
 - a) NEMA12
 - b) NEMA1
 - c) NEMA3R
 - d) NEMA4

- 3) Screw Cover Pull Boxes have gasketed covers.
 - a) True
 - b) False

- 4) A SC080804NK is painted what color?
 - a) ANSI49 Gray
 - b) ANSI61 Enamel
 - c) ANSI61 Polyester powder
 - d) None of the above

- 5) What does the letter G stand for in the part number SC060604GNK?
 - a) goop
 - b) gout
 - c) galvanized
 - d) none of the above



WIEGMANN

Product Quiz

- 6) What does the letter NK stand for in the part numbers SC060604GNK?
- a) Knockout
 - b) No Knockouts
 - c) With Knockouts
 - d) None of the above
- 7) If a person were to add a SCF0606 cover to a SC060604 enclosure, would the customer have a surface mount or a flush mount application?
- a) Surface
 - b) Flush
 - c) None of the above
- 8) Knockouts are typically concentric (ref: two knockout sizes within one) with a tab holding the metal in place.
- a) True
 - b) False
- 9) NEMA 1 Screw Cover Pull Boxes are seam welded.
- a) True
 - b) False
- 10) A SC060604GNK is painted:
- a) ANSI61 polyester powder
 - b) ANSI61 enamel
 - c) None of the above



WIEGMANN

Product Quiz

- 11) Screw Cover Pull Boxes have wall mounting feet welded to the back in four places.
- a) True
 - b) False
- 12) NEMA1 hinged cover Cutout Boxes (ref: A060604) have what type of hinges?
- a) Butt hinges
 - b) Lift off hinges
 - c) Formed hinges
 - d) Clamp style hinges
- 13) NEMA1 hinged cover Cutout Boxes are only available with Knockouts.
- a) True
 - b) False
- 14) SMALL NIC products (ref: NIC060604) come standard with an internal sub panel installed.
- a) True
 - b) False
- 15) SMALL NIC doors (ref: NIC060604) are held in place by what type of latches?
- a) Friction catches
 - b) Paddle Latches
 - c) 3pt Latches
 - d) ¼ turn coin latches



WIEGMANN

Product Quiz

- 16) NIC060604's are painted ANSI49 polyester powder.
- a) True
 - b) False
- 17) What is the height dimension of a NIC243008?
- a) 24
 - b) 30
 - c) 8
- 18) NIC products can be used outside so long as you add a drip shield.
- a) True
 - b) False
- 19) What is the height stand off on our NIC studs (ref: NIC060604).
- a) 15/16
 - b) 3/8
 - c) .46
 - d) .43
- 20) Extra Large NIC's have wall mounting feet top and bottom of cabinet.
- a) True
 - b) False



WIEGMANN

Product Quiz

- 21) RSCG's have a hasp for padlocking.
- a) True
 - b) False
- 22) RSCG's are mounted against the wall via:
- a) embossed holes
 - b) clearance holes
 - c) key holes
 - d) mounting feet
- 23) All RSCG's come standard with knockouts in the bottom.
- a) True
 - b) False
- 24) RSC enclosures come with a reversible cover that hides the meter hasp.
- a) True
 - b) False
- 25) RHC060604 covers are secured via what type of latching system.
- a) ¼ turn latch
 - b) 1 pt non locking handle
 - c) Hex nuts with slots
 - d) Padlockable draw catch



WIEGMANN

Product Quiz

- 26) RHC's come standard with mounting feet top and bottom.
- a) True
 - b) False
- 27) What type of sub panel does a RHC060604 use?
- a) NP0606
 - b) P0606
 - c) NIP0606
- 28) RSCG, RSC, RHC, WAGSC, and LOH enclosures meet NEMA 3R.
- a) True
 - b) False
- 29) RHC161206 use what type of sub panel?
- a) NP1612
 - b) P1612
 - c) NIP1612
- 30) LOH121206 enclosures come standard with mounting feet top and bottom.
- a) True
 - b) False



WIEGMANN®

Product Quiz Answers

Question Number

1) C

2) B

3) B

4) C

5) C

6) B

7) B

8) A

9) B

10) C

11) B

Question Number

12) D

13) A

14) B

15) D

16) B

17) B

18) B

19) C

20) A

21) B

22) A

Question Number

23) A

24) A

25) D

26) A

27) C



WIEGMANN®

Traditional NEMA Products

NEMA 12 enclosures

- B**, JIC LIFT OFF COVER SERIES, NEMA 12
- BCH**, JIC CONTINUOUS HINGE SERIES, NEMA 12
- BCH**, "LARGE" CONTINUOUS HINGE JIC SERIES, NEMA 12
- BCHQR**, JIC CONTINUOUS HINGE SERIES, NEMA 12
- BSC**, JIC SCREW COVER SERIES, NEMA 12
- WAGIE**, HINGED SCREW COVER SERIES, NEMA 12
- JIC**, SCREW COVER HANDY BOX SERIES, NEMA 12
- N12**, SINGLE DOOR WALL MOUNT SERIES, NEMA 12
- WAWF**, TWO DOOR WALL MOUNT SERIES, NEMA 12
- WAFM**, SINGLE DOOR FLUSH WALL MOUNT SERIES, NEMA 12
- N12**, TWO DOOR FLOOR MOUNT SERIES, NEMA 12
- WAFS**, **WAFSD**, **WAFSDA**, **WAFSDAD**, FREESTANDING ENCLOSURE SERIES, NEMA 12
- WA-E**, MULTI-DOOR FREESTANDING SERIES, NEMA 12
- TCH**, HINGE COVER WIRING TROUGH JIC SERIES, NEMA 12
- JW**, PULL THRU WIRE WAY SERIES, NEMA 12
- LJW**, LAY IN WIRE WAY SERIES, NEMA 12





WIEGMANN

B, JIC clamp cover “lift-off” enclosures

B

(i.e. B060604)

- Industrial (NEMA 12)
- Seam welded construction
- Clamp cover (lift off), with security chain
- Mounting feet top and bottom
- Weld nuts for mounting optional sub panels (6 x 4 & larger)
- External clamps for securing cover
- Closed cell neoprene gasket
- ANSI 61 polyester powder finish

SIZES: 4x4x3 - 16x14x6



Designed primarily for indoors



WIEGMANN

BCH, JIC continuous hinged enclosures

B-CH

(i.e. B161406CH)

- Industrial (NEMA 12)
- Seam welded construction
- Continuous hinged cover
- Mounting feet top and bottom
- Weld nuts for mounting optional sub panel (6x4 & larger)
- External clamps for securing cover
- Closed cell neoprene gasket
- ANSI 61 polyester powder finish

SIZES: 4x4x3 - 16x14x10



Designed primarily for indoors



WIEGMANN

BCH, LARGE JIC, continuous hinged enclosures

B-CH

(i.e. B201607CH)

- Industrial (NEMA 12)
- Seam welded construction
- Continuous hinge
- Mounting feet top and bottom
- Collar studs for mounting optional sub panel
- External clamps for securing cover
- Closed cell neoprene gasket
- ANSI 61 polyester powder finish

SIZES: 20x16x7 - 36x30x13



Designed primarily for indoors



WIEGMANN

BCHQR, quick release continuous hinged enclosures

B-CHQR

(i.e. B100804CHQR)

- Industrial (NEMA 12)
- Seam welded construction
- Quick release clamps
- Mounting feet top and bottom
- Weld nuts for mounting optional sub panel
- Closed cell neoprene gasket
- ANSI 61 polyester powder finish

SIZES: 6x4x3 - 16x14x6



Designed primarily for indoors



WIEGMANN

BSC, JIC enclosures

B-SC

(i.e. B060604SC)

- Industrial (NEMA 12)
- Seam welded construction
- Captivated screws secure cover
- Mounting feet top and bottom
- Weld nuts for mounting optional sub panel (6x4 & larger)
- Closed cell neoprene gasket
- ANSI 61 polyester powder

SIZES: 4x4x3 - 16x14x6



Designed primarily for indoors



WIEGMANN

WAGIE, JIC enclosures

WA-GIE

(i.e. WA060604GIE)

- Industrial (NEMA 12)
- Seam welded construction
- Continuous hinged cover
- Captivated screws secure cover
- No mounting feet
- Weld nuts for mounting optional sub panel
- Closed cell neoprene gasket
- ANSI polyester powder finish
- **SIZES: 6x6x4 -14x12x6**



Designed primarily for indoors



WIEGMANN

JIC, Handy Box enclosures

JIC

(i.e. JIC040202)

- Industrial (NEMA 12)
- Seam welded construction
- Drawn screw cover
- Less weld nuts
- Mounting feet top and bottom
- Closed cell neoprene gasket
- ANSI 61 polyester powder finish
- **SIZES:** 4x2x2 - 4x4x3



Designed primarily for indoors



WIEGMANN

N12 enclosures

N12

(i.e. N12161206)

- Industrial (NEMA 12)
- Plasma (seam) welded construction
- No grinding or vibrating
- Mounting feet top and bottom
- Collar studs for mounting optional sub panel
- External clamps for securing cover
- Continuous hinge with stainless pin
- Rolled lip on cover and tub
- Stiffeners
- Hasp and staple
- Print pocket
- Poured in place gasket on 36 x 30 and smaller
- ANSI 61 polyester powder
- **SIZES: 16x12x6 - 72 x30x16 (some sizes also in 20" AND 24" deep)**



Designed primarily for indoors



WIEGMANN

WAWF enclosures

WA-WF

(i.e. WA244208WF)

- Industrial (NEMA 12)
- Seam welded construction
- Double overlapping doors
- Continuous hinges
- Wall mounting feet top and bottom
- 3pt key locking handle
- Rolled lip on tub
- Stiffeners
- Print pocket
- Collar studs for mounting optional sub panels
- ANSI 61 polyester powder finish

SIZES: 24x42x8 - 48x48x12



Designed primarily for indoors



WIEGMANN

WAFM enclosures

WA-FM

(i.e. WA161206FM)

- Industrial (NEMA 12)
- Flush mount
- Plasma (seam) welded construction
- No grinding or vibrating
- Flush single door
- Captivated screws secure cover
- Continuous hinged door
- Rolled lip on tub
- Stiffeners
- Print pocket
- Poured in place gasket on 36 x 30 and smaller
- ANSI 61 polyester powder finish
- **SIZES: 16x12x6 - 36x30x8**



Designed primarily for indoors



WIEGMANN

N12, FLOOR MOUNT enclosures

N12

(i.e. N12604808)

- Industrial (NEMA 12)
- Continuous seam welded design
- Rolled lip on tub
- Double overlapping door design
- 3pt key locking/padlocking handle
- Closed cell neoprene gasket
- Print pocket
- 12" floor kit
- Collar studs for mounting optional sub panel
- Heavy duty continuous hinges
- Heavy duty lifting eyes
- Body stiffeners
- Panel supports
- ANSI 61 polyester powder finish



SIZES: 54x42x8 - 72x72x24

Designed primarily for indoors



WIEGMANN

WAFS enclosures

WA-FS, WA-FSD, WA-FSDA & WA-FSDAD (i.e. WA722418FS)



- Industrial (NEMA 12)
- Continuously welded design
- Freestanding design (no legs)
- Unistrut for mounting optional sub panels
- Heavy duty continuous hinge
- Rolled lip on tub
- 3pt keylocking/padlocking handle
- Print pocket
- Closed cell neoprene gasket
- Heavy duty lifting eyes
- ANSI 61 polyester powder finish
- **SIZES: 60x24x18 - 90x72x36**



FS = single door front access only

FSD = double door front access only

FSDA = single door front and rear
access

FSDAD = double door front and rear access

NOTE !! FSDA = dual access

Designed primarily for indoors



WIEGMANN

WAME, MULTI DOOR enclosures

WA-M-E

(i.e. WA86M5E20)

- Industrial (NEMA 12)
- Continuously seam welded design
- Freestanding design
- 3pt keylocking/padlocking handles
- Rolled lip on tub
- Stiffeners
- Heavy duty lifting eyes
- Print pocket
- Light mounting channels
- Panel mounting supports
- Heavy duty continuous hinges
- Closed cell neoprene gasket
- Sub panels (installed)
- ANSI 61 polyester powder finish
- **SIZES: 3, 4 and 5 doors in various sizes**



Designed primarily for indoors



WIEGMANN

TCH wiring trough

T-CH

(i.e. T4460CH)

- Industrial (NEMA 12)
- 14 gauge carbon steel
- Continuously welded seams
- Continuous hinge
- Covers secured with external clamps
- Closed cell oil resistant neoprene gasket
- External mounting feet
- ANSI 61 polyester powder
- **Sizes: 2 1/2"x2 1/2"x12" – 12"x12"x60"**



Designed primarily for indoors



WIEGMANN

JW & LJW wire way

JW, LJW Wire way

(i.e. JW44, LJW44)

- Industrial (NEMA 12)
- 14 gauge carbon steel bodies, 10 gauge end flanges (6x12 bodies/covers fabricated from 12 gauge)
- Continuously welded seams
- Butt hinge cover design
- Covers secured (JW=twist clamps, LJW=quick release)
- Closed cell oil resistant neoprene gasket
- Solid end gasket kits
- ANSI 61 polyester powder
- **Sizes: 2 1/2", 4", 6", 8", (6"x12" on LJW only)**



JW Series (pull thru design)



LJW Series (Lay-in design)

Designed primarily for indoors



WIEGMANN

OPERATOR INTERFACE

NEMA 12 & 4 enclosures

W1C, CONSOLES, NEMA 12

WC9, CONSOLES, NEMA 12

WC10, CONSOLES, NEMA 12

WC12, CONSOLES, NEMA 12

WC14, CONSOLES, NEMA 12

WCC, CONSOLETS, NEMA 12

CCL, PEDESTAL COLUMNS & BASES, NEMA 12

WPBA, SLOPING PB ENCLOSURES, NEMA 12

PB, 30.5mm PB ENCLOSURES, NEMA 4

PBGX, 22.5mm PB ENCLOSURES, NEMA 12

PBXD, 30.5mm PB ENCLOSURES, NEMA 4

PSL, 30.5mm PB ENCLOSURES, N12

PBYX, 30.5mm PB ENCLOSURES, N12

Please refer to engineering catalog for technical information on these products.





WIEGMANN

Product Quiz

- 31) B121005 has what kind of cover?
- a) Continuous hinge
 - b) Lift off
 - c) Screw cover
 - d) None of the above
- 32) BN4141206CH has what kind of cover?
- a) Continuous hinge
 - b) Lift off
 - c) Screw cover
 - d) None of the above
- 33) A BN4141206CH has clamps on four sides of the cover.
- a) True
 - b) False
- 34) A B060604SC has clamps around how many sides of the cover?
- a) One
 - b) Three
 - c) Four
 - d) None of the above
- 35) Large JIC enclosures have four wall mounting feet not two.
- a) True
 - b) False



WIEGMANN

Product Quiz

- 36) WAGIE enclosures use clamps to secure the cover.
- a) True
 - b) False
- 37) WAGIE enclosures have how many mounting feet?
- a) two
 - b) four
 - c) none
- 38) Single door wall mount NEMA12 enclosures (ref: N12161206) have how many mounting feet?
- a) 2
 - b) 6
 - c) 8
 - d) 4
- 39) NEMA 12 wall mounting feet have two slots and two clearance holes.
- a) True
 - b) False



WIEGMANN

Product Quiz

- 40) NEMA12 wall mounts (ref: N12161206) have door clamps located top and bottom of door.
- a) True
 - b) False
- 41) A N12242408 takes what size sub panel?
- a) NP2024
 - b) NP2424
 - c) NP2420
- 42) N12242008 enclosures are continuously welded and meet NEMA4.
- a) True
 - b) False
- 43) N12161206 enclosures are fabricated from what type of metal?
- a) Carbon steel
 - b) Galvanized steel
 - c) Stainless steel
 - d) None of the above
- 44) WA364212WF is a single door enclosure.
- a) True
 - b) False



WIEGMANN

Product Quiz

- 45) WA484812WF enclosures have what type of a handle?
- a) 1pt keylocking handle
 - b) 2pt keylocking handle
 - c) 3pt keylocking handle
 - d) 3pt padlocking handle
- 46) All "WAWF" wall mounts have six wall mounting feet.
- a) True
 - b) False
- 47) All "WAWF" enclosures come standard with a sub panel included.
- a) True
 - b) False
- 48) "WAWF" enclosures meet what NEMA rating?
- a) NEMA12
 - b) NEMA 3R
 - c) NEMA 4
 - d) NEMA4X
- 49) WA161206FM enclosures are surface mount and cannot be flush mounted.
- a) True
 - b) False
- 50) Doors on WA161206FM are secured via what type of hardware?
- a) Quick release clamps
 - b) Hasp and staple
 - c) 1pt keylocking handle
 - d) Captivated screws



WIEGMANN

Product Quiz

- 51) WA161206FM's meet NEMA 4X.
- a) True
 - b) False
- 52) N12606012 enclosures have what size floor kits?
- a) 12" tall
 - b) 15" tall
 - c) 20" tall
 - d) 24" tall
- 53) N12606012 enclosures have what type of handle?
- a) Keylocking
 - b) Padlocking
- 54) N12606012 have what type of door arrangement?
- a) Double overlapping
 - b) Single door
 - c) Double independent doors with removable center post
- 55) N12606012 have white interiors?
- a) True
 - b) False



WIEGMANN

Product Quiz

- 56) Sub panels in N12606012's are designed to be mounted how?
- a) On studs
 - b) On unistrut
 - c) None of the above
- 57) N12606012 enclosures meet what NEMA rating?
- a) NEMA4
 - b) NEMA4X
 - c) None of the above
- 58) WA722418FS enclosures have what type of door access?
- a) Single door single access
 - b) Two door dual access
 - c) Single door dual access
- 59) Sub panels are mounted on what when installing them into a WA723624FS?
- a) Unistrut
 - b) Studs
 - c) None of the above
- 60) A WA727224FSD has two doors.
- a) True
 - b) False
- 61) A WA727224FSDA has how many doors?
- a) 2
 - b) 3
 - c) 4
 - d) 6



WIEGMANN

Product Quiz

- 62) A WA722424FSDA has how many doors?
- a) 2
 - b) 1
 - c) 3
 - d) 4
- 63) How many 3pt handles are there on a WA722424FSDA?
- a) 2
 - b) 4
- 64) A WA86M3E enclosure has how many doors?
- a) 2
 - b) 3
 - c) 4
- 65) WA86M4E enclosures have what type of handles?
- a) Keylocking
 - b) Padlocking
- 66) Sub panels are included within WA86M4E enclosures.
- a) True
 - b) False



WIEGMANN

Product Quiz Answers

Question Number

31) B

32) A

33) B

34) D

35) A

36) B

37) C

38) D

39) A

40) B

41) B

Question Number

42) B

43) A

44) B

45) C

46) A

47) B

48) A

49) B

50) D

51) B

52) A

Question Number

53) A

54) A

55) B

56) A

57) C

58) A

59) A

60) A

61) A

62) A

63) A

Question Number

64) B

65) B

66) A



WIEGMANN

Traditional NEMA Products

NEMA 4 enclosures

- BN4**, JIC LIFT-OFF COVER SERIES, NEMA 4
- BN4CH**, JIC CONTINUOUS HINGE SERIES, NEMA 4
- WAGSC**, SCREW COVER, NEMA4
- BCHFTC**, JIC CONTINUOUS HINGE SERIES FTC FLANGE, NEMA 4
- N412C**, SINGLE DOOR WALL MOUNT SERIES, NEMA 4
- N4123PTC**, SINGLE DOOR WITH 3PT HANDLE, NEMA 4
- N412CST**, SINGLE DOOR SLOPE TOP, NEMA 4
- N412WC**, SINGLE DOOR WINDOW SERIES, NEMA 4
- N4**, SINGLE DOOR WALL MOUNT SERIES, NEMA 4
- N4D**, TWO DOOR FLOOR MOUNT SERIES, NEMA 4
- N4D3PT**, TWO DOOR 3PT HANDLES, NEMA 4
- N4SFS**, SINGLE DOOR FREESTANDING SERIES, NEMA 4
- WAFSN43PT**, FREESTANDING WITH 3 PT HANDLE, NEMA 4





WIEGMANN

BN4 enclosure

BN4

(i.e. BN4141206)

- Industrial (NEMA4)
- Seam welded construction
- Clamp cover (lift off)
- Mounting feet top and bottom
- Stainless clamps for securing cover
- Weld nuts for mounting optional sub panel
- Closed cell neoprene gasket
- ANSI 61 polyester powder finish
- **SIZES: 4x4x3 - 16x14x6**



Designed primarily for outdoors



WIEGMANN

BN4CH enclosures

BN4-CH

(i.e. BN4100804CH)

- Industrial (NEMA 4)
- Seam welded construction
- Continuous hinge
- Stainless hinge pin
- Mounting feet top and bottom
- Weld nuts for mounting optional sub panel
- Stainless external clamps for securing cover
- Closed cell neoprene gasket
- ANSI 61 polyester powder finish
- **SIZES: 4x4x3 - 16x14x6**



Designed primarily for outdoors



WIEGMANN

WAGSC enclosures

WA-GSC

(i.e. WA060604GSC)

- Industrial (NEMA 4)
- Seam welded construction
- Closed cell neoprene gasket
- Screw Cover design
- Captivated stainless cover screws
- Painted version offers a ANSI 61 polyester powder finish
- Galvanized version is unpainted

SIZES: 6x6x4 - 36x36x12



Designed primarily for outdoors



WIEGMANN

BCHFTC enclosure

B-CHFTC

(i.e. B1614065CHFTC)

- Industrial (NEMA 4)
- Seam welded construction
- FTC style flange around door opening
- Closed cell neoprene gasket
- Continuous hinge
- Quick release clamps for securing door
- ANSI 61 polyester powder finish
- External mounting feet
- Weld nuts for mounting optional sub panel
- **SIZES: 6x4x4 ½ - 16x14x6 1/2**



Designed primarily for outdoors



WIEGMANN

N412C enclosures

N412-C, N412-3PTC & N412-CST (i.e. N412161206C, N4122016063PTC, N412302408CST)



CST

- Industrial (NEMA 4)
- **ALSO AVAILABLE IN SLOPE TOPS (CST)**
- Plasma (seam) welded
- No grinding or vibrating
- Interchangeable doors
- Lift off hinges
- 1/4 turn oil tight latches or 3PT combo handle
- Print pocket
- Poured in place gasket (36 x 30 and smaller)
- Collar studs for mounting optional sub panel
- Body stiffeners
- ANSI 61 polyester powder finish
- Optional mounting foot kits available
- **SIZES: 12x12x6 - 60x36x12**



3PTC

Designed primarily for outdoors



WIEGMANN

N412WC enclosures

N412-WC

(i.e. N412161206WC)

- Industrial (NEMA 4)
- Plasma (seam) welded
- No grinding or vibrating
- Interchangeable doors
- Lift off hinges
- 1/4 turn oil tight latches
- Plexiglas viewing window
- Poured in place gasket (36x30 and smaller)
- Collar studs for mounting optional sub panel
- Body Stiffeners
- ANSI 61 polyester powder finish
- Optional mounting foot kits available
- **SIZES: 12x12x6 - 30x24x20**



Designed primarily for outdoors



WIEGMANN

N4 enclosures

N4

(i.e. N4161206)

- Industrial (NEMA4)
- Plasma (seam) welded
- No grinding or vibrating
- Rolled lip on door and tub
- Stainless door clamps
- Stainless hinge pin
- Continuous hinge
- Hasp and staple
- Print pocket
- Wall mounting feet top and bottom
- Poured in place gasket (36 x 30 and smaller)
- Collar studs for mounting optional sub panel
- Clamps can be replaced with 3PT handle
- Door and body stiffeners

SIZES: 16x12x6 - 60x36x16



Designed primarily for outdoors



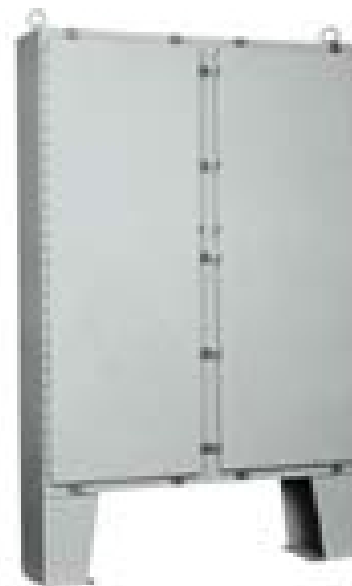
WIEGMANN

N4D enclosures

N4D & N4D-3PT

(i.e. N4D624810, N4D7472123PT)

- Industrial (NEMA4)
- Continuously welded design
- Rolled lips on doors and tub
- Stainless door clamps
- Hasp and staples or 3PT handles (N4D-3PT)
- Collar studs for mounting optional sub panel
- X type body stiffener
- Heavy duty continuous hinge
- Stainless pin
- Print pocket
- 12" Floor kits
- Heavy duty lifting eyes
- Removable center post
- Closed cell neoprene gasket
- ANSI 61 polyester powder finish
- **SIZES: 62x48x10 – 74x72x24**



Designed primarily for outdoors



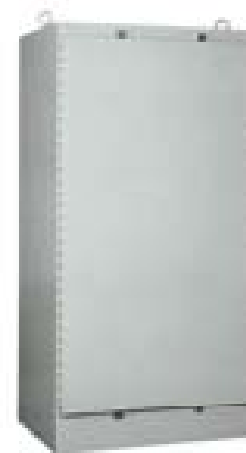
WIEGMANN

N4SFS & WAFSN43PT enclosures

N4S-FS & WA-FSN43PT

(i.e. N4S722518FS, WA723018FSN43PT)

- Industrial (NEMA 4)
- Continuously welded design
- Rolled lips on door and tub
- Stainless door clamps or 3PT handle (WA-FSN43PT)
- Hasp and staple
- Unistrut for mounting optional sub panels
- Heavy duty continuous hinge
- Stainless pin
- Freestanding design (no floor kits)
- Print pocket
- Heavy duty lifting eyes
- Clamps can be replaced with 3PT handle
- Closed cell neoprene gasket
- ANSI 61 polyester powder finish
- **SIZES: 60x24x18 – 90x36x36**



Designed primarily for outdoors



WIEGMANN

Product Quiz

- 67) N412 enclosures (ref: N412161206) have wall mounting feet welded to their backs.
- a) True
 - b) False
- 68) N412 enclosures are provided with a ¼ turn latches for easy access.
- a) True
 - b) False
- 69) N412 enclosure doors are interchangeable.
- a) True
 - b) False
- 70) N412 enclosures meet what NEMA rating?
- a) NEMA12
 - b) NEMA4
 - c) All of the above
- 71) Optional mounting foot kits are available for mounting enclosures against wall (ref: N412161206).
- a) True
 - b) False



WIEGMANN

Product Quiz

- 72) At what height does a N412 enclosure come with a 3pt latch?
- a) 36"
 - b) 40"
 - c) 48"
- 73) N412 optional wall mounting feet can be mounted on the enclosure sides as well as the top and bottom.
- a) True
 - b) False
- 74) N412 enclosures come standard with sub panels installed.
- a) True
 - b) False
- 75) N4242006 enclosures have clamps around how many sides of the door?
- a) 1
 - b) 2
 - c) 3
- 76) What type of door clamps are on a N4201606?
- a) Plated
 - b) Stainless



WIEGMANN

Product Quiz

- 77) How many mounting feet are there on a N4242408 enclosure?
- a) 2
 - b) 4
 - c) 6
- 78) A N4D626012 enclosure has double overlapping doors.
- a) True
 - b) False
- 79) A N4D626012 enclosure has what dividing its two doors?
- a) A removable center post
 - b) 3pt keylocking handle
- 80) N4D enclosures come standard with what size floor kits?
- a) 6"
 - b) 12"
 - c) 4"
- 81) N4S722518FS are floor mounted on 12" high legs.
- a) True
 - b) False



WIEGMANN

Product Quiz

- 82) What are used to secure doors on N4S722518FS enclosures?
- a) Stainless clamps
 - b) Hasp and staple
 - c) 3pt padlocking handle
 - d) a & b
- 83) N4S722518FS enclosures use what method to mount sub panels?
- a) Unistrut
 - b) Studs
 - c) No method provided
- 84) A "BN4" is what type of enclosure?
- a) NEMA4
 - b) NEMA12
 - c) NEMA1
 - d) NEMA3R
- 85) How many sides have clamps on a BN4100804 (ref: the lid).
- a) 2
 - b) 3
 - c) 4
- 86) The clamps surrounding the lid on a BN4100804 are:
- a) Zinc Plated
 - b) Stainless steel
 - c) Galvanized



WIEGMANN

Product Quiz

- 87) What does the "CH" stand for in the following part number: BN4100804CH?
- a) Lift off cover
 - b) Cut outs and holes
 - c) Continuous hinged
 - d) None of the above
- 88) How many studs are in BN4 type enclosures (excluding BN4040403)?
- a) 2
 - b) 3
 - c) always 4
 - d) Sometimes 6
- 89) Jic sub panels that go into BN4 type enclosures are fabricated from what gauge of material?
- a) 12 gauge
 - b) 11 gauge
 - c) 10 gauge
 - d) 14 gauge



WIEGMANN

Product Quiz Answers

Question Number

67) B

68) A

69) A

70) C

71) B

72) B

73) A

74) B

75) C

76) B

77) B

Question Number

78) B

79) A

80) B

81) B

82) D

83) A

84) A

85) C

86) B

87) C

88) C

Question Number

89) D



WIEGMANN

Traditional NEMA Products, “STAINLESS”

NEMA 4X enclosures

- BN4SS**, JIC LIFT-OFF COVER SERIES, NEMA 4X
 - BN4CHSS**, JIC CONTINUOUS HINGE SERIES, NEMA 4X
 - BN4AL**, JIC LIFT-OFF COVER ALUMINUM SERIES, NEMA 4X
 - BN4CHAL**, JIC HINGE COVER ALUMINUM SERIES, NEMA 4X
 - SSN4**, SINGLE DOOR WALL MOUNT SERIES, NEMA 4X
 - SSN43PT**, SINGLE DOOR WALLMOUNT 3PT HANDLE SERIES, NEMA 4X
 - SSN43PTW**, SINGLE DOOR, WHITE, 3PT HANDLE SERIES, NEMA 4X
 - ALN4**, SINGLE DOOR WALL MOUNT ALUMINUM SERIES, NEMA 4X
 - N412SSC**, SINGLE DOOR WALL MOUNT SERIES, NEMA 4X
 - N412SS3PTC**, SINGLE DOOR WITH 3PT HANDLE, NEMA 4X
 - N412CSSST**, SINGLE DOOR SLOPE TOP, NEMA 4X
 - N412WSSC**, SINGLE DOOR WINDOW SERIES, NEMA 4X
 - SSN4WF3PT**, DOUBLE DOOR WALLMOUNT SERIES, NEMA 4X
 - SSN4D**, TWO DOOR FLOOR-MOUNT, NEMA 4X
 - SSN4D3PT**, TWO DOOR FLOOR-MOUNT, 3PT, NEMA 4X
 - N4SFSSS** SINGLE DOOR FREESTANDING SERIES, NEMA 4X
 - WASSFSN43PT & WASSFSDN43PT** FREESTANDING ENCLOSURE SERIES, NEMA 4X
 - PBSS & PBXDSS**, PUSH BUTTON SERIES ENCLOSURES, NEMA 4X
 - WAFSSS & WAFSDSS**, SINGLE AND TWO DOOR FREESTANDING SERIES, N12
 - WC-CSS**, CONSOLE SERIES, NEMA 12
 - CCOLSS & BASESSS**, PEDESTAL AND BASE SERIES, NEMA 12
 - SSJW**, STAINLESS WIREWAY, NEMA 12
- STAINLESS ACCESSORIES**





WIEGMANN

BN4SS enclosures

BN4-SS

(i.e. BN4080604SS)

- Industrial (NEMA 4X)
- 304 Stainless steel
- Closed cell neoprene gasket
- External mounting feet top and bottom
- Weld nuts for mounting optional sub panel
- Stainless clamps
- Lift off cover
- Grained finish
- **SIZES: 4x4x3 - 16x14x6**



Designed primarily for outdoors



WIEGMANN

BN4CHSS enclosures

BN4-CHSS

(i.e. BN4141206CHSS)

- Industrial (NEMA 4X)
- 304 stainless steel
- Seam welded construction
- Closed cell neoprene gasket
- External mounting feet top and bottom
- Weld nuts for mounting optional sub panel
- Stainless clamps
- Continuous hinge
- Grained finish
- 316 stainless steel also stocked
- **SIZES: 6x4x4 - 16x14x6**



Designed primarily for outdoors



WIEGMANN

BN4AL enclosures

BN4-AL

(i.e. BN4161406AL)

- Industrial (NEMA 4X)
- .080 Aluminum
- Closed cell neoprene gasket
- External mounting feet top and bottom
- Weld nuts for mounting optional sub panel
- Stainless clamps
- Lift off cover
- Grained finish
- **SIZES: 6x6x4 - 16x14x6**



Designed primarily for outdoors



WIEGMANN

BN4CHAL enclosures

BN4-CHAL

(i.e. BN4080603CHAL)

- Industrial (NEMA4X)
- .080 Aluminum
- Closed cell neoprene gasket
- External mounting feet top and bottom
- Weld nuts for mounting optional sub panel
- Stainless clamps
- Lift off cover
- Grained finish
- **SIZES: 6x6x4 - 16x14x6**



Designed primarily for outdoors



WIEGMANN

N412SSC, N412WSSC, N412SS3PTC & N412CSSST

N412-SSC, N412-WSSC, N412-SS3PTC & N412-CSSST

(i.e. N412161206SSC, N412161206WSSC)



CSSST



WSSC



SS3PTC

- Industrial (NEMA 4X)
- **ALSO AVAILABLE IN SLOPE TOPS!!!**
- Continuously welded
- 304 & 316 Stainless steel
- Interchangeable doors
- Lift off hinges
- 1/4 turn oil tight latches or door combo handle
- Print pocket
- Poured in place gasket (36x30 and smaller)
- Collar studs for mounting optional sub panel
- Body stiffeners
- Optional mounting foot kits available
- **SIZES: 12x12x6 – 60x36x12**



Designed primarily for outdoors



WIEGMANN

SSN4 enclosures

SSN4

(i.e. SSN4161206, SSN4244808WF3PT)

- Industrial (NEMA4X)
- 304 & 316 stainless
- Single or double door wall mounts
- With clamps or combo handles
- Continuously welded seams
- Mounting feet top and bottom
- Collar studs for mounting optional sub panel
- Stainless external clamps for securing cover
- Continuous hinge with stainless pin
- Rolled lip on cover and tub
- Also in white finish over stainless (SSN4-3PTW)
- Hasp and staple
- Print pocket
- Clamps can be replaced with 3PT handle
- Poured in place gasket on 36x30 and smaller
- **SIZES: 16x12x6 - 60x36x16**



Designed primarily for outdoors



WIEGMANN

ALN4 enclosures

ALN4

(i.e. ALN4302412)

- Industrial (NEMA4X)
- .080 aluminum
- Single door wall mounts
- Continuously welded seams
- Mounting feet top and bottom
- Collar studs for mounting optional sub panel
- External clamps for securing cover
- Continuous hinge with stainless pin
- Rolled lip on cover and tub
- Hasp and staple
- Print pocket
- Poured in place gasket on 36x30 and smaller
- **SIZES: 16x12x6 - 60x36x12**



Designed primarily for outdoors



WIEGMANN

SSN4D enclosures

SSN4D & SSN4D-3PT

(i.e. SSN4D624812, SSN4D7460123PT)

- Industrial (NEMA 4X)
- Continuously welded design
- Rolled lips on doors and tub
- Stainless door clamps or 3PT combo handles
- Hasp and staples
- Collar studs for mounting optional sub panel
- X type body stiffener
- Heavy duty continuous hinge
- Stainless pins
- 12" floor kits
- Heavy duty lifting eyes
- Clamps can be replaced with 3PT handle
- Removable center post
- Closed cell neoprene gasket



Designed primarily for outdoors



WIEGMANN

N4SFSSS, WASSFSN43PT & WASSFSDN43PT enclosures

N4S-FSSS, WA-SSFSN43PT & WA-SSFSDN43PT (i.e. N4S722518FSSS, WA723018SSFSN43PT)

- Industrial (NEMA 4X)
- Fabricated from 304 stainless
- 316 stainless (also available as standard)
- Continuously welded design
- Rolled lips on door and tub
- Stainless door clamps or 3 PT combo handle
- Hasp and staple
- Unistrut for mounting optional sub panels
- Heavy duty continuous hinge
- Stainless pin
- Freestanding design (no floor kits)
- Print pocket
- Heavy duty lifting eyes
- Clamps can be replaced with 3PT handle
- Closed cell neoprene gasket
- Standard grained finish



Designed primarily for outdoors



WIEGMANN

PBSS, PBXDSS enclosures

PBSS, PBXD-SS (i.e. PBSS1, PBXD16SS)

- Industrial (NEMA 4X)
- Fabricated from 304 stainless steel
- Continuously welded seams
- Closed cell neoprene gasket
- External mounting feet top and bottom
- Captivated cover screws
- Standard “4-way” pushbutton holes
- Internal detachable hinges on larger sizes
- Standard grained finish



Designed primarily for outdoors



WIEGMANN®

SSJW wire way

SSJW

(i.e. SSJW44)

- Industrial (NEMA 12, NEMA 4X pending)
- 304 stainless steel
- Hinged cover
- Continuously welded seams
- Closed cell neoprene gasket
- Heavy duty butt hinges
- Quick-screw-clamps secure cover
- Solid joint (end) gasket provided
- Standard grained finish
- Sizes: 4" & 6"



Designed primarily for indoors



WIEGMANN®

NEMA 12 “Stainless” enclosures

NEMA 12 stainless enclosures

WAFSSS & WAFSDSS, SINGLE AND TWO DOOR FREESTANDING SERIES, NEMA 12

PBSS & PBXDSS, PUSH BUTTON SERIES ENCLOSURES, NEMA 12

WC-CSS, CONSOLET SERIES, NEMA 12

CCOLSS & BASESSS, PEDESTAL AND BASE SERIES, NEMA 12

SSJW, STAINLESS WIREWAY & FITTINGS, NEMA 12





WIEGMANN

WAFSSS enclosures

(i.e. WA722418FSSS)

- Industrial (NEMA 12)
- 304 stainless construction
- Single and double door available
- Continuously welded design
- Freestanding design (no legs)
- Unistrut for mounting optional sub panels
- Heavy duty continuous hinge
- Rolled lip on tub
- 3pt keylocking/padlocking handle
- Print pocket
- Closed cell neoprene gasket
- Heavy duty lifting eyes
- Standard grained finish



Designed primarily for indoors



WIEGMANN

WC Consolet enclosures

WC-C-SS

(WC12C12SS)

- Industrial (NEMA 12, NEMA4X pending)
- 304 Stainless steel
- Continuously welded seams
- Captivated cover screws
- Sloped and hinged control panel
- closed cell neoprene gasket
- Control surfaces can be mounted 30 or 60 degrees
- Standard grained finish



Designed primarily for indoors



WIEGMANN

Product Quiz

- 90) ALN4161206 enclosures meet what NEMA rating?
- a) NEMA6
 - b) NEMA9
 - c) NEMA4X
 - d) None of the above
- 91) ALN4 enclosures are fabricated from what gauge material?
- a) .080
 - b) .125
 - c) .250
- 92) BN4100804CHSS enclosures are fabricated from 304 stainless steel and are also available in 316 stainless.
- a) True
 - b) False
- 93) SSN4161206 enclosures meet what NEMA rating?
- a) NEMA6
 - b) NEMA9
 - c) NEMA4X
 - d) None of the above
- 94) A SSN4X242108 is what type of enclosure?
- a) Standard NEMA 4 wall mount
 - b) Stainless right flange NEMA 4X disconnect
 - c) NEMA1 enclosure



WIEGMANN®

Product Quiz

- 95) SSN4D6224812 enclosures have a removable center post.
- a) True
 - b) False
- 96) SSN4D624812 have two hasp and staples.
- a) True
 - b) False
- 97) SSN4D enclosures are mounted on what size floor kit?
- a) 16"
 - b) 15"
 - c) 12"
 - d) 8"
- 98) What best describes the door arrangement of a SSN4D624812?
- a) Double independent
 - b) Double overlapping
 - c) Single door
 - d) None of the above
- 99) A SSJW41 is what type of product?
- a) Wireway section
 - b) Fitting
 - c) NEMA4 enclosure
 - d) None of the above



WIEGMANN

Product Quiz

- 100) SSJW products are used in what type of environments?
- a) Very corrosive environments
 - b) Contractor/Commercial
 - c) Industrial applications
 - d) A & C
- 101) SSJW product is not gasketed.
- a) True
 - b) False



WIEGMANN

Product Quiz Answers

Question Number

90) C

91) A

92) A

93) C

94) B

95) A

96) A

97) C

98) A

99) A

100) D

101) B



WIEGMANN

Disconnect enclosures

NEMA 12, 4 & 4X disconnect enclosures

- ABN12**, RIGHT FLANGED SINGLE DOOR, NO DOOR HANDLE, NEMA 12
- SDN12**, RIGHT FLANGED SINGLE DOOR, NO DOOR HANDLE, NEMA 12
- SDN12PL**, RIGHT FLANGED SINGLE DOOR, WITH DOOR HANDLE, NEMA 12
- SN4**, RIGHT FLANGED SINGLE DOOR, NO DOOR HANDLE, NEMA 4
- SSN4X**, RIGHT FLANGED SINGLE DOOR, NO DOOR HANDLE, NEMA 4X
- N412CD**, RIGHT FLANGED SINGLE DOOR, WITH DOOR HANDLE, NEMA 4
- N412CDSS & N412CDSSA**, RIGHT FLANGED SINGLE DOOR, WITH DOOR HANDLE, NEMA 4X
- N412CSTD**, RIGHT FLANGED SINGLE DOOR, SLOPE TOP, WITH DOOR HANDLE, NEMA 4
- N412CSSSTD**, RIGHT FLANGED SINGLE DOOR, SLOPE TOP, WITH DOOR HANDLE, NEMA 4X
- WAXU**, RIGHT FLANGED, DOUBLE DOOR, FLOOR MOUNT, N12
- WAXSSN4**, RIGHT FLANGED, DOUBLE DOOR, FLOOR MOUNT, N4X
- WACPXU**, CENTER POST, DOUBLE DOOR, FLOOR MOUNT, N12
- WACPXSSN4**, CENTER POST, DOUBLE DOOR, FLOOR MOUNT, N4X
- WAXMU**, RIGHT FLANGED, SINGLE AND DOUBLE DOOR, FREESTANDING, N12
- WAXMSSN4**, RIGHT FLANGED, SINGLE AND DOUBLE DOOR, FREESTANDING, N4X
- WAXMEQU & WAXMEWU**, RIGHT FLANGED, 3 4 and 5 DOOR, N12
- WMOD & WMODXU**, RIGHT FLANGED, MODULAR, SINGLE AND DOUBLE DOOR, FREESTANDING, N12



Please refer to the engineering catalog for technical information on these products.

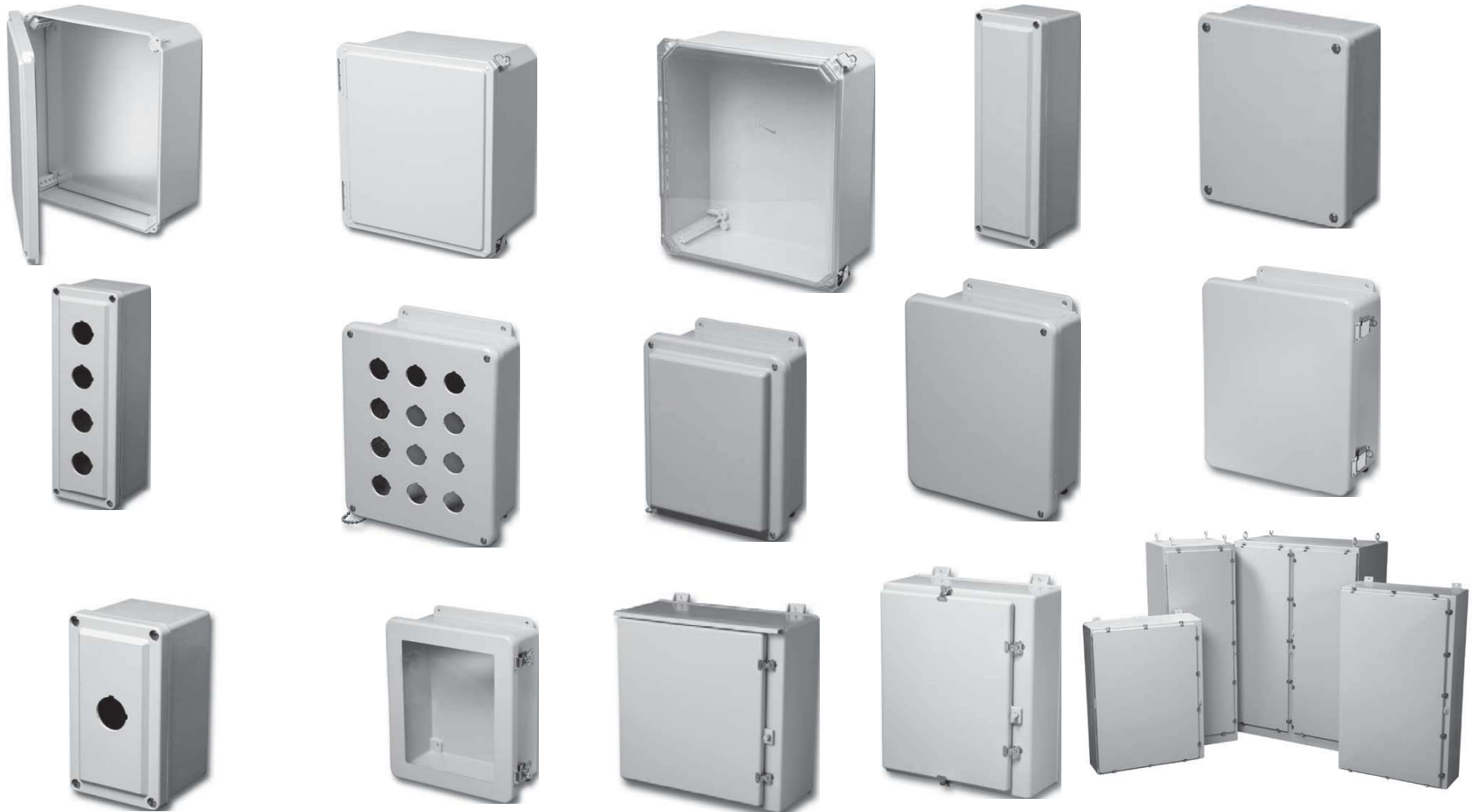




WIEGMANN

NON METALLIC

WIEGMANN OFFERS A FULL LINE OF **NON METALLIC ENCLOSURES** AND ACCESSORIES, PLEASE SEE THE ENGINEERING CATALOG FOR DETAILS





WIEGMANN

ACCESSORIES and ENVIRONMENTAL CONTROLS

WIEGMANN OFFERS ENCLOSURE ACCESSORIES AND ENVIRONMENTAL CONTROLS, PLEASE SEE THE ENGINEERING CATALOG FOR DETAILS





WIEGMANN

**Wiegmann also leads the industry in
Special/Modified enclosure products.
Contact the factory for pricing and lead
times.**

**THANK YOU for taking the time to learn
more about the Hubbell-Wiegmann product
line!**