



Food Processing Product Solution Guide for Wiring Devices

FASTENAL®



HUBBELL® Food Processing Solutions



Washdown Areas



To ensure sanitary conditions, washdowns are required in food processing

environments. Strict cleanliness and sanitation requirements must be met to ensure product is safe for consumer use, but washdowns and harsh chemicals can damage and shorten the life of electrical products. Selecting the proper equipment is critical in avoiding downtime while still promoting sanitary conditions. All electrical equipment, controls, and components must be environmentally rated for the correct application.



Corrosive Environments



In highly corrosive food processing environments, materials must

constantly battle deterioration. Unprotected electrical products can deteriorate and fail, creating safety issues, unreliable connections, and the potential for lost productivity. Corrosion caused by chemicals, moisture, and other elements can't be eliminated, but the right products can ensure that corrosion doesn't interfere with reliable power delivery.

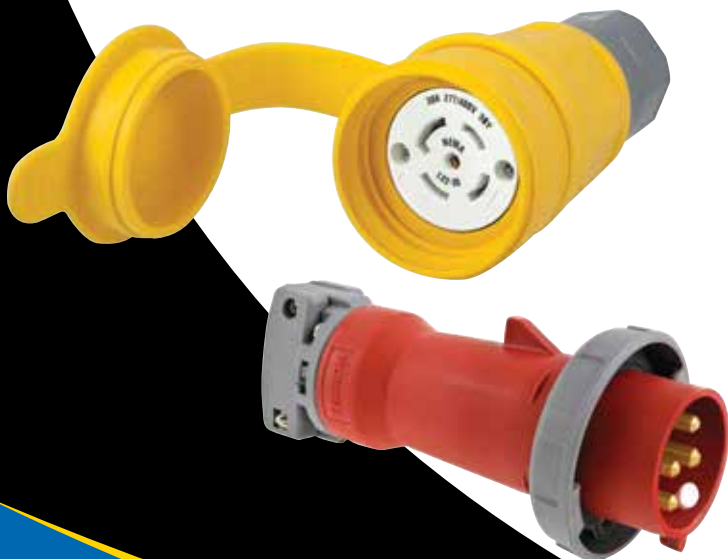


Extreme Temperatures



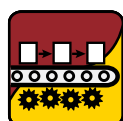
Food and beverage plants often operate within extreme temperature ranges

due to processing equipment like dryers, ovens, and flash freezers. Harsh, hot and cold zones, along with extreme temperature fluctuations, can add stress to the electrical system. In these environments, electrical component failure may occur. Expansion and contraction caused by temperature changes can damage electrical devices.





Process Automation



Improving food processing capabilities and efficiencies can

help lower production costs while improving overall productivity. To achieve this, all electrical, instrumentation and automation components must work together efficiently and effectively within the process automation. Automating food and beverage processing requires equipment flexibility and the ability to reconfigure quickly and efficiently.



Personnel Protection



Not only is food safety important in a food processing environment – so is

the safety of the personnel who work in these areas. Employees are subject to the risk of electrical shock from exposed wiring and trips and falls from cables and cords on the floor. Injury due to working alongside harsh chemicals and in extreme temperatures are also a concern. Commitment to personnel safety requires the right types of electrical components to protect against hazards.



Harsh Locations

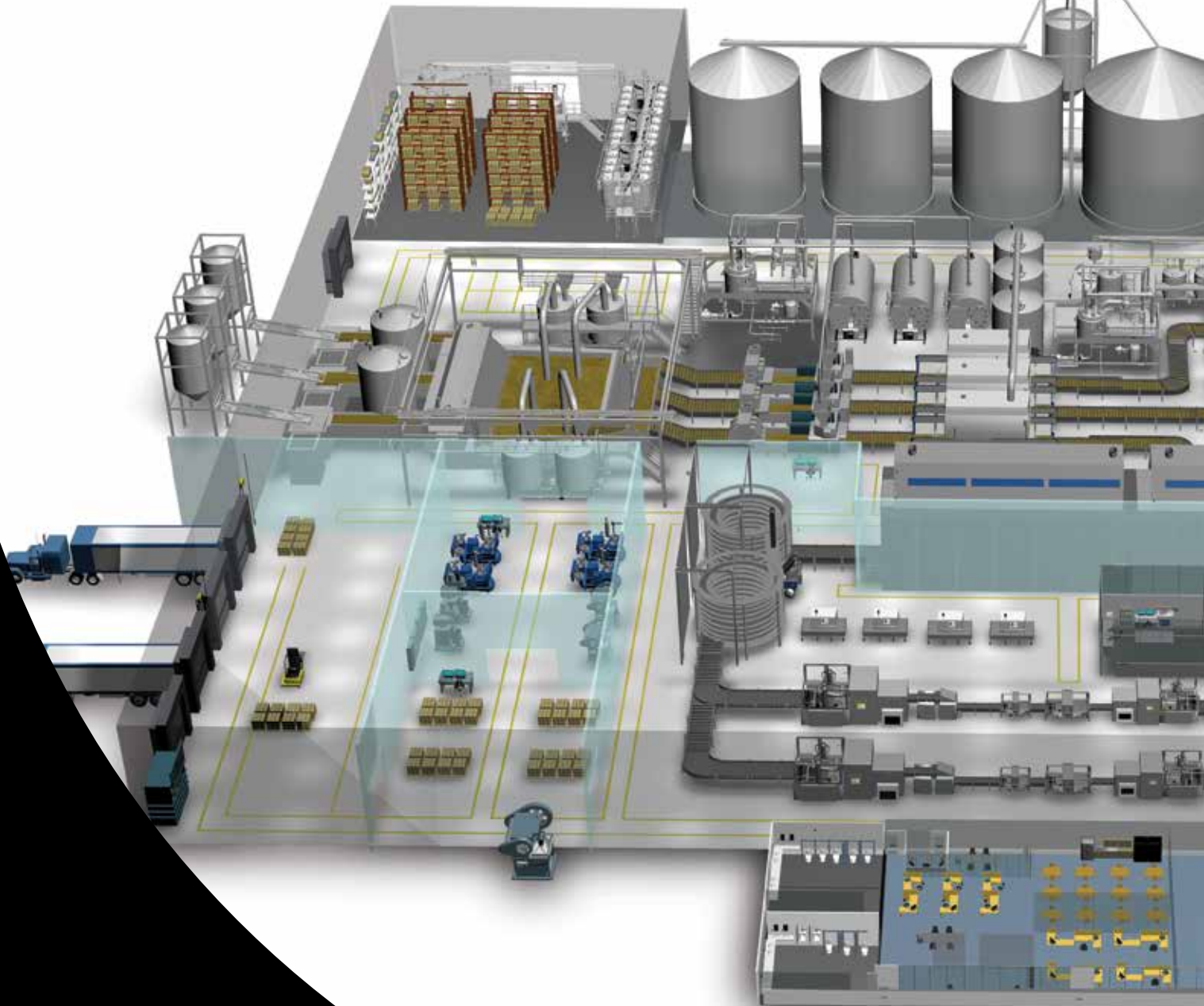


Food processing plants can be classified as hazardous by

the National Electrical Code because of the way materials are handled, processed, and stored. Explosion and fire are possible due to the presence of flammable gases, vapors, and dust. To protect food processing facilities and employees, high-performance solutions are needed to prevent and contain possible explosion.



HUBBELL® Food Processing Solutions



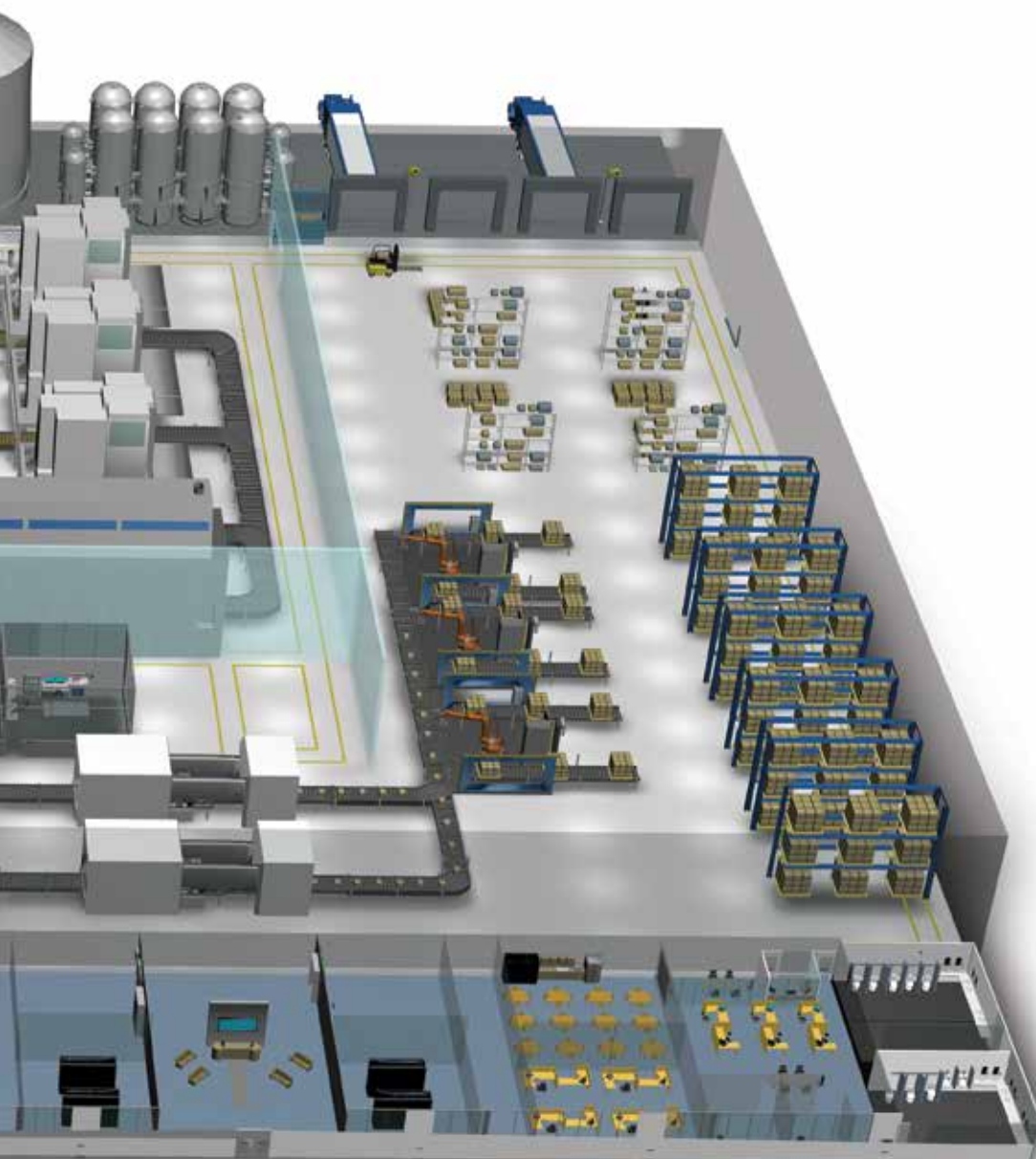
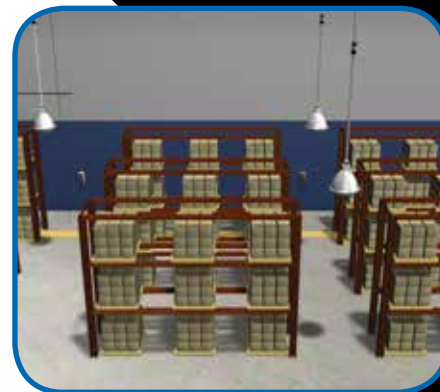
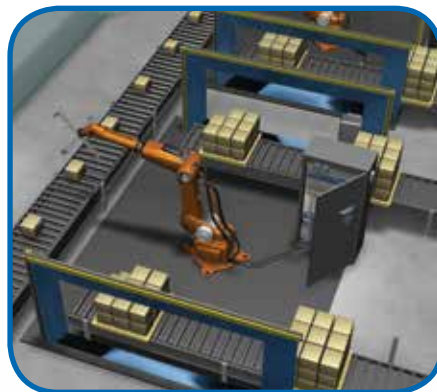


Table Of Contents

Washdown Areas

| | |
|-------------------------------------|-----|
| IEC Pin & Sleeve | 6 |
| Watertight Wiring Devices | 6-7 |

Corrosive Environments

| | |
|---------------------------------------|---|
| Corrosion Resistant Devices | 8 |
| Weatherproof Covers | 8 |

Extreme Temperatures

| | |
|------------------------------|---|
| Hazardous Location | |
| Occupancy Sensors | 9 |
| 50 Amp Twist-Lock® | 9 |

Process Automation

| | |
|--------------------------------------|----|
| Linkosity® | 10 |
| MotorQuick® | 10 |
| Twist-Lock® Wiring Devices | 11 |
| Panel-Safe® | 11 |

Personnel Protection

| | |
|-----------------------------------|----|
| GFCI Receptacles | 12 |
| Locking Switches | 12 |
| Portable GFCI | 12 |
| Switched Enclosures | 13 |
| TrukTrak® and TredTrak® | 13 |
| Cord and Hose Reels | 13 |

Harsh Locations

| | |
|------------------------------------|----|
| Mechanical Interlocks | 14 |
| Disconnect Switches | 14 |
| Explosion Proof Lighting | 15 |
| Harsh Occupancy Sensors | 15 |

See back page for Food Processing
eTour information



Washdown environments can be challenging to clean. Not only do electrical products need to withstand high-pressure washdowns and harsh chemicals, but complete runoff is also important. Whether it's Watertight devices, Watertight Safety-Shroud® Twist-Lock® devices or IEC Pin & Sleeve devices, Hubbell's extensive offering of devices meet the challenge.

IEC Watertight and Switch-Rated Pin & Sleeve Devices

- The UV-stabilized, impact and corrosion-resistant PBT housing is designed to withstand harsh industrial environments
- Advantage™ Series Switch-Rated Pin & Sleeve has superior water ingress protection, UL witnessed IP69k and UL Type 4X and 12. Device is built to withstand wet and harsh environments
- The sleek and modern design of the ergonomic device is easy to keep clean making it ideal for hygienic food processing facilities



| Rating Color Coded by Voltage | Company | Advantage™ Series IP69k | | | IP67k | | |
|-------------------------------------|-------------------------|-------------------------|---------------------------|----------------------------|------------------------|------------------------|------------------------|
| | | Plug | Switch-Rated Connector | Switch-Rated Receptacle | Connector | Receptacle | Plug |
| 20A 120/240V | Hubbell # Fastenal # | — | — | — | HBL420C12W 0735580 | HBL420R12W 0735604 | HBL420P12W 0735599 |
| 20A 3Ø 480V | Hubbell # Fastenal # | — | — | — | HBL420C7W 0735582 | HBL420R7W 0735606 | HBL420P7W 0735601 |
| 30A 125/250V | Hubbell # Fastenal # | HBL430P12W 99609468 | HBL430C12W 99609454 | HBL430R12W 99609482 | HBL430C12W 0735615 | HBL430R12W 0735650 | HBL430P12W 0735637 |
| 30A 3Ø 480V | Hubbell # Fastenal # | HBL430P7W 99609476 | HBL430C7W 99609461 | HBL430R7W 99609490 | HBL430C7W 0735617 | HBL430R7W 0735652 | HBL430P7W 0735641 |
| 30A 3Ø 600V | Hubbell # Fastenal # | HBL430P5W 99609477 | HBL430C5W 99609462 | HBL430R5W 99609491 | HBL430C5W 0735616 | HBL430R5W 0735651 | HBL430P5W 0735638 |
| 60A 120/240V | Hubbell # Fastenal # | — | — | — | HBL460C12W 0735711 | HBL460R12W 0735750 | HBL460P12W 0735736 |
| 60A 3Ø 480V | Hubbell # Fastenal # | — | — | — | HBL460C7W 0735713 | HBL460R7W 0735752 | HBL460P7W 0735741 |
| 60A 3Ø 600V | Hubbell # Fastenal # | — | — | — | HBL460C5W 0735712 | HBL460R5W 0735751 | HBL460P5W 0735738 |
| 100A 120/240V | Hubbell # Fastenal # | — | — | — | HBL4100C12W 0735507 | HBL4100R12W 0735535 | HBL4100P12W 0735523 |

Watertight Safety-Shroud® Twist-Lock® Devices

- Constructed of highly impact-resistant PBT thermoplastic for a UL Type 4X rating in heavy duty environments
- Safety-Shroud virtually eliminates bent and broken plug blades, leading to longer equipment life while providing extra protection for personnel



| Rating Color Coded by Voltage | Poles/ Wires | Company | Connector | Plug | Receptacles |
|----------------------------------|-----------------|-------------------------|-----------------------|----------------------|-----------------------|
| 20A 125V | 2P/3W | Hubbell # Fastenal # | HBL2313SW 0734723 | HBL2311SW 0734717 | HBL2310SW 0734712 |
| 20A 250V | 2P/3W | Hubbell # Fastenal # | HBL2323SW 0734746 | HBL2321SW 0734740 | HBL2320SW 0734735 |
| 20A 277V | 2P/3W | Hubbell # Fastenal # | HBL2333SW 99614406 | HBL2331SW 0734759 | HBL2330SW 99614410 |
| 20A 3Ø 250V AC | 3P/4W | Hubbell # Fastenal # | HBL2423SW 0734844 | HBL2421SW 0734842 | HBL2420SW 0734839 |
| 30A 3Ø 250V AC | 3P/4W | Hubbell # Fastenal # | HBL2723SW 0735083 | HBL2721SW 0735080 | HBL2720SW 0735077 |
| 30A 3Ø 480V AC | 3P/4W | Hubbell # Fastenal # | HBL2733SW 0735098 | HBL2731SW 0735095 | HBL2730SW 0735092 |



Water & Dust Ingress Protection:



IP69k Water Test

Extremely Hot (176°) and High Pressure Water (1450 psi) sprayed from various angles.

IP69k Dust Test

Device is placed in a dust chamber for 8 hours while a vacuum tries to pull dust into the sealed device.

UL 50E Type 4X Test

High Flow of Water (65 gallons of water per minute thru 1" hose) is directed at all joints of the enclosure for 5 minutes.

Advantage™ Series

Closure cover is spring-loaded to the open position, reminding users that the cover must be secured to ensure maximum ingress protection.



Washdown Areas

Watertight Devices

- Smooth body design minimizes dirt and debris collection
- Industry best strain relief assures consistent sealing and max cord retention
- Corrosion-resistant nickel plated blades and stainless steel captive assembly screws
- NEMA 3R, 3RX, 4, 4X, 6, 6P, IP65, IP66, IP67



Straight Blade

| Rating | Poles/ Wires | Color | Company | Plug | Connector | Receptacle with Lift Cover | Duplex Receptacle |
|-----------------------|-----------------|--------|-------------------------|------------------------------|------------------------------|-------------------------------|-----------------------------|
| NEMA 5-15 15A 125V | 2P/3W | Yellow | Hubbell # Fastenal # | HBL14W47A 0781815 | HBL15W47A 0781821 | HBL60W47 0781911 | HBL60W47D 0781912 |
| | | Black | Hubbell # Fastenal # | HBL14W47BK 0781816 | HBL15W47BK 0781822 | — | — |
| NEMA 6-15 15A 250V | 2P/3W | Yellow | Hubbell # Fastenal # | HBL14W49 0781818 | HBL15W49 0781824 | HBL60W49 0781915 | HBL60W49D 0781916 |
| NEMA 5-20 20A 125V | 2P/3W | Yellow | Hubbell # Fastenal # | HBL14W33A 0781814 | HBL15W33A 0781820 | HBL60W33 0781909 | HBL60W33D 0781910 |
| NEMA 6-20 20A 250V | 2P/3W | Yellow | Hubbell # Fastenal # | HBL14W48 0781817 | HBL15W48 0781823 | HBL60W48 0781913 | HBL60W48D 0781914 |



Twist-Lock® Devices

| Rating | Poles/ Wires | Color | Company | Plug | Connector | Receptacle with Lift Cover | Duplex Receptacle |
|----------------------------------|-----------------|--------|-------------------------|------------------------------|------------------------------|-------------------------------|-----------------------------|
| NEMA L5-15 15A 125V | 2P/3W | Yellow | Hubbell # Fastenal # | HBL24W47A 0781826 | HBL25W47A 0781830 | HBL65W47 0781920 | HBL65W47D 0781921 |
| | | Black | Hubbell # Fastenal # | HBL24W47BK 0781827 | HBL25W47BK 0781831 | — | — |
| NEMA L7-15 15A 277V | 2P/3W | Yellow | Hubbell # Fastenal # | HBL24W34 0781825 | HBL25W34 0781829 | HBL65W34 0781918 | HBL65W34D 0781919 |
| NEMA L5-20 20A 125V | 2P/3W | Yellow | Hubbell # Fastenal # | HBL26W47 0781835 | HBL27W47 0781850 | HBL67W47 0781927 | — |
| | | Black | Hubbell # Fastenal # | HBL26W47BK 0781836 | HBL26W47BK 0781851 | — | — |
| NEMA L6-20 20A 250V | 2P/3W | Yellow | Hubbell # Fastenal # | HBL26W48 0781837 | HBL27W48 0781852 | HBL67W48 0781928 | — |
| NEMA L7-20 20A 277V | 2P/3W | Yellow | Hubbell # Fastenal # | HBL26W49 0781838 | HBL27W49 0781853 | HBL67W49 0781929 | — |
| NEMA L14-20 20A 125/250V | 3P/4W | Yellow | Hubbell # Fastenal # | HBL26W74 0781839 | HBL27W74 0781854 | HBL67W74 0781930 | — |
| NEMA L15-20 20A 3Ø 250V AC | 3P/4W | Yellow | Hubbell # Fastenal # | HBL26W75 0781840 | HBL27W75 781855 | HBL67W75 0781931 | — |
| | | Black | Hubbell # Fastenal # | HBL26W75BK 0781841 | HBL27W75BK 0781856 | — | — |
| NEMA L5-30 30A 125V | 2P/3W | Yellow | Hubbell # Fastenal # | HBL28W47 0781865 | HBL29W47 0781880 | HBL69W47 0781938 | — |
| | | Black | Hubbell # Fastenal # | HBL28W47BK 0781866 | HBL29W47BK 0781881 | — | — |
| NEMA L7-30 30A 277V | 2P/3W | Yellow | Hubbell # Fastenal # | HBL28W49 0781868 | HBL29W49 0781883 | HBL69W49 0781940 | — |
| NEMA L14-30 30A 125/250V | 3P/4W | Yellow | Hubbell # Fastenal # | HBL28W74 0781869 | HBL29W74 0781884 | HBL69W74 0781941 | — |



National Sanitation Foundation (NSF)

Known as The Most Trusted Name in Food Safety™, NSF International has been helping businesses in the agriculture, processing, food equipment, restaurant and retail industries to navigate the food safety and regulatory environment for nearly 70 years.

© 2014 NSF International. All rights reserved.



NEMA

| Type No. | IEC Enclosure Class | Basic Description |
|----------|---------------------|---|
| 4 | IP66 | Watertight, Dusttight Indoor, Outdoor |
| 4X | IP66 | Watertight, Dusttight, Corrosion-Resistant Indoor, Outdoor |
| 6 | IP67 | Watertight, Dusttight Sleet (Ice) Resistant Indoor, Outdoor |
| 12 | IP52 | Industrial Use, Dusttight, Driptight Indoor |



Corrosive Environments



Food processing areas can be particularly corrosive for electrical connections, calling for an extra level of safety and protection. Hubbell offers a wide range of plugs, connectors, and receptacles that are specifically designed to withstand corrosive environments.

Corrosion Resistant Devices

- UV stabilized, chemical and oil resistant receptacle faces are impact resistant in refrigerated environments
- Nickel plated contacts and stainless steel hardware protect metallic components from corrosion
- Powerful nylon cord grips on plugs and connectors prevent wire strain on terminals and prevent cord pull-outs



Straight Blade

| Rating | Poles/Wires | Company | Connector | Plug | Duplex Receptacle | Single Receptacle | Duplex Lift Cover |
|----------|-------------|------------------------|------------------------------|------------------------------|-----------------------------|------------------------------|-----------------------------|
| 15A 125V | 2P/3W | Hubbell # Fastenal# | HBL52CM69C 0736109 | HBL52CM66C 0736107 | HBL52CM62 0736105 | HBL52CM61 99616739 | HBL52CM21 0736101 |
| 20A 125V | 2P/3W | Hubbell # Fastenal# | HBL53CM69C 0736206 | HBL53CM66C 0736205 | HBL53CM62 0736204 | HBL53CM61 99616738 | HBL52CM21 0736101 |



Twist-Lock®

| Rating | Poles/Wires | Company | Connector | Plug | Duplex Receptacle | Single Receptacle | Lift Cover |
|----------|-------------|------------------------|-------------------------------|------------------------------|------------------------------|-----------------------------|--------------------------------|
| 15A 125V | 2P/3W | Hubbell # Fastenal# | HBL47CM29C 99614319 | HBL47CM20C 0735908 | HBL47CM00 99614318 | — | HBL74CM25WOA 0736703 |
| 20A 125V | 2P/3W | Hubbell # Fastenal# | HBL23CM13 0734786 | HBL23CM11 0734784 | — | HBL23CM10 0734783 | |

Weatherproof Covers

- Available in either cast aluminum or impact and UV resistant PBT materials
- Stainless steel springs and mounting hardware makes for superior corrosion resistance



Duplex Covers

| Description | Thermoplastic for Vertical Mounting | | | | Cast Aluminum for Horizontal Mounting | |
|------------------------|-------------------------------------|-----------------|-----------|----------------|---------------------------------------|-----------------|
| | Gray | | Yellow | | Aluminum | |
| | Hubbell # | Fastenal # | Hubbell # | Fastenal # | Hubbell # | Fastenal # |
| For FS/FD box mounting | HBL5221 | 0736024 | HBL52CM21 | 0736101 | HBL5206WO | 99617247 |
| For device mounting | HBL5222 | 99617250 | HBL52CM22 | 0736103 | HBL5205WO | 99617248 |



Receptacle Covers Vertical FS/FD Mounting

| Color | Company | Face Diameter inches (mm) 1.36" - 1.39" (34.5-35.3) | | Face Diameter inches (mm) 1.55" - 1.58" (39.4-35.3) | | Face Diameter inches (mm) 1.68" - 1.72" (42.7-43.7) | |
|--------|-------------------------|--|---------------------------|--|---------------------------|--|----------------------------|
| | | Thermoplastic | Cast Aluminum | Thermoplastic | Cast Aluminum | Thermoplastic | Cast Aluminum |
| Gray | Hubbell # Fastenal # | HBL7423WO 0736673 | HBL7420 0736672 | HBL7425WOA 0736675 | HBL7420 0736672 | HBL7424WO 0736674 | HBL3393 99617242 |
| Yellow | Hubbell # Fastenal # | HBL74CM23WO 99617240 | — | HBL74CM25WOA 0736703 | — | HBL74CM24WO 0736702 | — |

Wet Locations: Thermoplastic w/ cover "open" Cast Aluminum w/ cover "closed".

Weather Resistant Receptacles

Per National Electrical Code (NEC®) Article 406.9; all 125 and 250 volt, 15 and 20 amp non-locking receptacles for use in damp or wet locations shall be a listed weather resistant type. Listed devices are required to have a WR marking on the face visible when installed.



NEC® 110.11 Electrical Installations

Unless identified for use in the operating environment, no conductors or equipment shall be located in damp or wet locations.



Extreme Temperatures



Extreme temperature changes can wreak havoc on electrical components and devices that aren't constructed to withstand a food processing environment. Hubbell products are designed to withstand temperature fluctuations and accommodate expansion and contraction when necessary.

H-MOSS®|MAXX™ Harsh Sensors

- Watertight occupancy sensor is ideal for energy savings in harsh environments
- Line and low voltage options are available
- Watertight OPTIMYZER is IP65, NEMA 3R watertight and outdoor rated

Outdoor Rated Watertight Wall Mount PIR Sensor

IP66, NEMA 4X

| Description | Voltage | Hubbell # | Fastenal# |
|---|---------|-------------|-----------|
| Heavy duty wall or pendant mount PIR sensor; -40°F to 149°F (-40°C to 65°C) operating temperature range; isolated relay, photocell and 160° of coverage | 24V DC | AHP1600WRP* | 0778862* |



Extreme Temperature PIR Ceiling Sensor

| Description | Company | 24V DC Sensor | NEMA 4X Enclosure |
|---|------------------------|-------------------------|-------------------|
| Upgraded ceiling PIR sensor; isolated relay and photocell; -40°F to 149°F (-40°C to 65°C) operating temperature range; Use ACIPE to make NEMA 4X watertight | Hubbell # Fastenal# | AHP1500CRP* 0778863* | ACIPE 0769859 |



Watertight OPTIMYZER®

IP66, NEMA 3R

| Description | Voltage | Hubbell # | Fastenal# |
|--|--------------|-------------|-----------|
| PIR sensor, relay with photocell | 120-347V AC | HMHB21UPCW | 0769810 |
| PIR sensor, 2 relays with photocell | 120-347V AC | HMHB22UPCW | 0769811 |
| PIR sensor, 1 double pole relay with photocell | 208, 240V AC | HMHB23APCW | 0769812 |
| PIR sensor, 1 double pole relay with photocell | 480V AC | HMHB23BPCW | 0769813 |
| PIR sensor with photocell | 24V DC | HMHB2LVPCW* | 0769814 |



* Must use control unit CU300HD, see below.

Control Unit

| Description | Voltage | Hubbell # | Fastenal# |
|---|-------------|-----------|-----------|
| Control Unit for use with AHP1600WRP, AHP1500CRP and HMHB2LVPCW | 120-277V AC | CU300HD | 0778864 |



50 Amp Twist-Lock®

- Thermoplastic polyester interior of plugs provides heat resistance and impact strength
- Super tough nylon housing offers better impact qualities
- Padlock capable shroud allows compliance to OSHA lockout tagout regulation 29 CFR 1910.147



| NEMA Rating | Poles/Wires | Company | Plug | Connector | Receptacle | Flanged Inlet |
|-------------|-------------|------------------------|--------------------|--------------------|-------------------|-------------------|
| 50A 125V | 2P/3W | Hubbell # Fastenal# | CS6361C 0732882 | CS6360C 0732881 | CS6370 0732889 | CS6377 0732893 |
| 50A 250V | 2P/3W | Hubbell # Fastenal# | CS8265C 0732902 | CS8264C 0732901 | CS8269 0732903 | CS8275 0732904 |
| 50A 480V | 2P/3W | Hubbell # Fastenal# | CS8465C 0732915 | CS8464C 0732914 | CS8469 0732916 | CS8475 0732917 |
| 50A 125/250 | 3P/4W | Hubbell # Fastenal# | CS6365C 0732885 | CS6364C 0732883 | CS6369 0732887 | CS6375 0732890 |
| 50A 3Ø 250 | 3P/4W | Hubbell # Fastenal# | CS8365C 0732907 | CS8364C 0732905 | CS8369 0732909 | CS8375 0732911 |
| 50A 3Ø 480 | 3P/4W | Hubbell # Fastenal# | CS8165C 0732898 | CS8164C 0732897 | CS8169 0732899 | CS8175 0732900 |

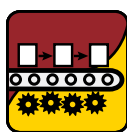


Whether there is a need to comply with codes and standards such as provisions **9.4.1.1 of ASHRAE 90.1** and **130.1(c) of CEC Title 24** for Automatic Lighting Shutoff or to simply achieve significant energy savings, H-MOSS®|MAXX™ from Hubbell is the ideal solution for those indoor or outdoor harsh environments where heavy duty devices are required.



NEC® 430.102 (B)

- (1) Separate Motor Disconnect. A disconnecting means for the motor shall be located in sight from the motor location and the driven machinery locations.
- (2) Controller Disconnect. The controller disconnecting means required in accordance with 430.102(1) shall be permitted to serve as the disconnecting means for the motor if it is in sight from the motor location and the driven machinery location.



Hubbell's complete line of electrical components and devices includes cost-effective alternatives to conventional wiring methods, along with fast installation and excellent performance. It also allows for easy retrofits to existing hard-wired installations.

Linkosity®

- Reconfigurable factory defined assemblies that can be easily installed as a cost effective alternative to conventional wiring methods, supports moves, adds and changes
- Enables fast installation and high technical performance for 20A and 30A circuits up to 600V



Cables and Receptacles

Power Components 20A, 30A up to 600V

| Device Type | Ratings | Wires | Conductor Colors** | Length (ft.) |
|--|--|--------------------|--|----------------|
| PH Double Ended Cable - Male/Female Straight | 20 20A up to 600V | 02 - 05 | PA Green/Yellow; Black (all others) | 001 1' |
| PM Male Single Ended Straight | | | | 005 5' |
| PN Male Single Ended 90° | | | | 010 10' |
| PF Female Single Ended Straight | | | | 015 15' |
| PG Female Single Ended 90° | | | | 020 20' |
| PQ Double Ended Cable with Female 90° | 23 20A up to 600V Specialty construction (Includes isolated ground on 6 wire and 10AWG super neutral conductor on 5 and 6 wire devices) | 03 04 05 06 | PB Green/Yellow White Black (all others) | 025 25' |
| PR Double Ended Cable with Male 90° | | | | 030 30' |
| PS Double Ended Cable with (2) 90° Connectors | | | | 035 35' |
| RF Female Receptacle; ½" N.P.T. rear thread | | | | 040 40' |
| RM Male Receptacle (Inlet); ½" N.P.T. rear thread | | | | 045 45' |
| | 30 30A up to 600V | 04 | **Other color codes available upon request | 050 50' |

Example Catalog Number: **PH2306PB050**



LINKOSITY® Tees

| Description | Hubbell # | Fastenal # |
|----------------------------------|-----------------|-----------------|
| M/F/F Tee, 20A, 2P | TX2002002002T00 | 99614029 |
| M/F/F Tee, 20A, 3P | TX2003002003T00 | 99614030 |
| M/F/F Tee, 20A, 5P | TX2005002005T00 | 99614032 |
| M/F/F Tee, 20A SNIG, 4P | TX2304002304T00 | 99614015 |
| M/F/F Tee, 20A SNIG, A Phase Tap | TX2306002304A00 | 99616250 |
| M/F/F Tee, 20A SNIG, B Phase Tap | TX2306002304B00 | 99616251 |
| M/F/F Tee, 30A, 4P | TX3004003004T00 | 99613768 |



Closure Caps

| Description | For use with | Hubbell # | Fastenal # |
|-------------|-------------------|-----------|-----------------|
| 20A and 30A | Female Receptacle | CCMBC | 99616233 |
| | Male Inlet | CCFBC | 99609689 |

MotorQuick®

- Combines Circuit-Lock® motor disconnect with plug-and-play LINKOSITY® system for faster installation and replacement of motors.
- Easily retrofits to existing hard wired installations with LINKOSITY® components.
- **HBLDS3** series are IP69k and certified by NSF for hygiene in food processing applications.



30A 3 Pole 600V AC

| Description | Company | Type 1 HBL1389D Non-Metallic | Type 2 HBLDS3 Non-Metallic | Type 2 HBLDS3SS Stainless Steel | Type 2 HBLDS3SSR Stainless Steel |
|--|-------------------------|------------------------------------|----------------------------------|---------------------------------------|--|
| With (1) pre-wired LINKOSITY® female receptacle (load side) | Hubbell # Fastenal # | HBL1389MQR 99609245 | HBLDS3MQR 99613044 | HBLDS3SSMQR 99612056 | HBLDS3SSRMQR 99609260 |
| With 5 ft. pre-wired LINKOSITY® female cable (load side) | Hubbell # Fastenal # | HBL1389MQ5 99609247 | HBLDS3MQ5 99613046 | HBLDS3SSMQ5 99609268 | HBLDS3SSRMQ5 99609261 |
| With (1) pre-wired LINKOSITY® male receptacle (line side) and (1) pre-wired LINKOSITY® female receptacle (load side) | Hubbell # Fastenal # | HBL1389MQR2 99609246 | HBLDS3MQR2 99613045 | HBLDS3SSMQR2 99612057 | HBLDS3SSRMQR2 99609262 |

Twist-Lock® Plugs, Connectors and Receptacles

- Integral dust shield protects wiring chamber from dust or contaminants
- Tough ribbed nylon housing provides a secure grip with impact and chemical resistance
- Two part cord grip tightens with two screws for maximum strain relief

Hubbell Twist-Lock®... The Industry Standard!



| NEMA Rating Color Coded by Voltage | Poles/Wires | Plug | | Connector | | Receptacle | |
|---------------------------------------|-------------|-----------|----------------|-----------|----------------|------------|----------------|
| | | Hubbell # | Fastenal # | Hubbell # | Fastenal # | Hubbell # | Fastenal # |
| 15A 125V AC | 2P/3W | HBL4720C | 0735803 | HBL4729C | 0735809 | HBL4710 | 0735766 |
| 20A 125V AC | 2P/3W | HBL2311 | 0734713 | HBL2313 | 0734720 | HBL2310 | 0734707 |
| 20A 250V AC | 2P/3W | HBL2321 | 0734736 | HBL2323 | 0734743 | HBL2320 | 0734729 |
| 20A 3Ø 250V AC | 3P/4W | HBL2421 | 0734840 | HBL2423 | 0734843 | HBL2420 | 0734833 |
| 20A 3Ø 480V AC | 3P/4W | HBL2431 | 0734857 | HBL2433 | 0734862 | HBL2430 | 0734849 |
| 30A 3Ø 250V AC | 3P/4W | HBL2721 | 0735078 | HBL2723 | 0735081 | HBL2720 | 0735072 |
| 30A 3Ø 480V AC | 3P/4W | HBL2731 | 0735093 | HBL2733 | 0735096 | HBL2730 | 0735087 |

Panel-Safe®

- Available in Type 4, 12 and 4X versions with protective clear cover
- Provides overcurrent protection for power ports
- Ensures safety with finger-safe contacts and Hubbell GFCI functionality



| Description | NEMA TYPE 4, 12 | | NEMA TYPE 4X | |
|--|----------------------|--|-----------------|---------------------------|
| | Hubbell # | Fastenal # | Hubbell # | Fastenal # |
| Power Only 20A 125V GFCI with In-Cabinet Receptacle | PR20 | 99616234 | — | — |
| Data Only Cat. 5e Ethernet Access only DB9 Interface Connector only DH + Combo (DB9/8M Din) and Cat. 5e Ethernet | P5E PDB9 PDH5E | 0741826 99610772 99610773 | P4X5E — — | 99616237 — — |
| Power and Data 20A 125V GFCI with In-Cabinet Receptacle and Cat. 5e Ethernet Access | PR205E | 0742651 | PR4X205E | 99616240 |
| 20A 125V GFCI with In-Cabinet Receptacle, Cat. 5e Ethernet Access and 3A Circuit Breaker | PR205EB | 0742653 | PR4X205EB | 99616241 |
| 20A 125V GFCI Power and Cat. 5e Ethernet, DH + Combo (DB9/8M Din) | P20DH5E | 99616236 | — | — |
| 15A 125V Power and Cat. 5e Ethernet Access | P155E | 0741807 | P4X155E | 99616238 |
| 15A 125V Power, Cat. 5e Ethernet Access and 3A Circuit Breaker | P155EB | 99616235 | P4X155EB | 99616239 |
| 15A 125V Power and (2) Cat. 5e Ethernet Access | P155E2 | 99610771 | — | — |



NFPA 79 Section 16.1.1(6) 16.1.2 Control Panel Utility Receptacle Standard

- All utility receptacles must be GFCI protected.
- All external utility receptacles must be covered.
- All covers must maintain the enclosure rating.

NFPA 70E:

- Electrical equipment enclosure can ONLY be accessed by qualified personnel with extensive protective clothing and equipment, including fire-resistant suits and hoods with non-conductive wands.



Personnel Protection



The combination of GFCI protection and tamper-resistant safety provides an ideal one-stop solution. Hubbell's tamper-resistant GFCI devices also include a weather-resistant rating per NEC 406.9, providing UV and corrosion resistance.

GFCI Receptacles

- Self-Test units continually tests and monitors for protection automatically
- No power at device face if reverse wired, eliminating false assumption of protection
- Patented tamper-resistant design limits improper access to energized contacts



AUTOGUARD® Self Test GFCI Receptacles

| Description | Color | 15A 125V | | 20A 125V | |
|---|-------|-------------|-----------------|-------------|-----------------|
| | | Hubbell # | Fastenal # | Hubbell # | Fastenal # |
| Flush, polyester face; back and side wired; multiple drive screws; 10 kA Short Circuit Current Rating | Black | GFR5262SGBK | 99610445 | GFR5362SGBK | 99610451 |
| | Brown | GFR5262SG | 99610446 | GFR5362SG | 99610311 |
| | Gray | GFR5262SGGY | 99610447 | GFR5362SGGY | 99610452 |
| | Ivory | GFR5262SGI | 99610448 | GFR5362SGI | 0733861 |
| | Red | GFR5262SGR | 99610449 | GFR5362SGR | 99610453 |
| | White | GFR5262SGW | 99610450 | GFR5362SGW | 99610454 |

Locking Switches

- Prevents unauthorized control of lighting or ventilation control
- Keys supplied with each locking switch
- One piece integral grounding terminal provides a low resistance ground path

AC Barrel Key

20A 120-277 Volt

| Pole | Hubbell # | Fastenal # |
|------------------------|------------|-----------------|
| Single Pole | HBL1221RKL | 0734314 |
| Double Pole | HBL1222RKL | 99617063 |
| Three-Way | HBL1223RKL | 0734335 |
| Four-Way | HBL1224RKL | 99617144 |
| Barrel key replacement | HBL1209RKL | 0734298 |



Locking Switches

120-277 Volt

| Pole | 15 Amp | | 20 Amp | |
|-----------------|-----------|-----------------|-----------|----------------|
| | Hubbell # | Fastenal # | Hubbell # | Fastenal # |
| Single Pole | HBL1201L | 0734280 | HBL1221L | 0734308 |
| Double Pole | HBL1202L | 99617100 | HBL1222L | 0734319 |
| Three-Way | HBL1203L | 0734291 | HBL1223L | 0734330 |
| Four-Way | HBL1204L | 99617099 | HBL1224L | 0734341 |
| Replacement key | | | HBL1209 | 0734297 |



Circuit Guard® Portable GFCI

- Provides a watertight housing for maximum safety in harsh environments
- Available with either automatic and manual set feature to fit the application
- Bright indicator light provides fault confirmation from a distance

Portable GFCI Line Cords

| Description | Length | GFCI Cord Line | Fastenal # | |
|-------------------|--------|----------------|-----------------|-----------------|
| | | | Automatic | Manual |
| 15A 120V AC | 18 in. | GFP4C15x | 0733799 | 0733800 |
| | 6 ft. | GFP6C15x | 0733808 | 0733809 |
| | 25 ft. | GFP25C15x | 0733778 | 0733779 |
| w/ Stripped Leads | 15 ft. | GFPOEMx | 99616027 | 99616030 |
| 20A 120V AC | 3 ft. | GFP3C20M | — | 0733795 |

x= A (Automatic) or M (Manual) Set



In-Line GFCI

15A 120V AC
2 ft. cord length

| Description | Length | Hubbell # | Fastenal # | |
|-----------------|--------|-----------|-----------------|-----------------|
| | | | Automatic | Manual |
| Single | 2 ft. | GFP2Cx | 99616078 | 99616083 |
| | 25 ft. | GFP25Cx | 99616079 | 99616085 |
| Triple Tap | 2 ft. | GFP2TTx | 0733786 | 0733787 |
| | 25 ft. | GFP25TTx | 99616028 | 99616084 |
| w/ Flying Leads | 15 ft. | GFP15Lx | 99616087 | 99616088 |
| | 35 ft. | GFP35Lx | 99616032 | 99616033 |

x= A (Automatic) or M (Manual) Set



Wired On Straight Blade Portable GFCI Plugs

Industrial Grade, 15A 125V AC

| Description | Company | Catalog Number |
|----------------------------------|------------|----------------|
| Manual set; black | Hubbell # | GFP5266C |
| | Fastenal # | 0733804 |
| Manual set; yellow | Hubbell # | GFP5266CY |
| | Fastenal # | 0733805 |
| Manual Set; with 1 ft. Line cord | Hubbell # | GFP1C |
| | Fastenal # | 0733766 |



Circuit Guard® In-Line GFCI

2 ft. cord length

| Description | Hubbell # | Fastenal # | |
|-------------|---------------|-----------------|-----------------|
| | | Automatic | Manual |
| Single | GFPI15125x | 99616076 | 99616080 |
| 15A 120V AC | | | |
| Locking | GFPI120125LKx | 99610235 | 99610238 |
| 20A 120V AC | | | |

x= A (Automatic) or M (Manual) Set



For non-residential installations all 125V 15 and 20 AMP receptacles installed in locations specified in NEC® Article 210.8(B)(1) to (8) shall have ground fault circuit interrupter protection for personnel. These areas include:

- (1) Bathrooms
- (2) Kitchens
- (3) Roof Tops
- (4) Outdoors
- (5) Sinks (within 6' of edge)
- (6) Indoor Wet Locations
- (7) Locker Rooms / Shower Facilities
- (8) Garages / Service Bays



Personnel Protection

Switched Enclosures

- UL Listed as a manual motor controller and "suitable as a motor disconnect"
- UL witnessed IP69k and UL Type 4x and 12 environmental ratings
- Certified by NSF for hygiene in food processing applications

Labelless Non-Metallic and Stainless Steel Disconnect Switch

| Amps | Stainless Steel | | | | Non-Metallic Square Top | |
|------|-----------------|------------|------------|------------|----------------------------|------------|
| | Square Top | | Sloped Top | | | |
| | Hubbell # | Fastenal # | Hubbell # | Fastenal # | Hubbell # | Fastenal # |
| 30A | HBLDS3SS | 99612212 | HBLDS3SSR | 99609258 | HBLDS3 | 0737213 |
| 60A | HBLDS6SS | 99617150 | HBLDS6SSR | 99609265 | HBLDS6 | 0737225 |
| 100A | HBLDS10SS | 99617147 | HBLDS10SSR | 99609255 | HBLDS10 | 0737210 |

Note: for enclosure with auxiliary contact, **HBLAC1**, please add an "AC" suffix to the catalog number. For disconnect switch containing auxiliary contact **HBLAC2** for use with Variable Frequency Drives, add a "VFD" suffix to the catalog number.



UL355 4.3, 4.4

Cord Reels, that employ Ground-Fault Circuit Interrupter outlet(s) and are connected to the power supply by means of flexible cord with an attachment plug and/or that employ slip rings, shall be provided with open neutral protection as part of the GFCI.

Circuit-Lock® Fused Disconnect Switches

| Description | 30A | | 60A | |
|--|-----------|-----------------|-----------|-----------------|
| | Hubbell # | Fastenal # | Hubbell # | Fastenal # |
| Disconnect Switch | FDS30* | 0733384* | FDS60* | 0733385* |
| Auxiliary contacts, normally open, A600 pilot duty | ACFSNO | 99617030 | | |
| Auxiliary contacts, normally closed, A600 pilot duty | ACFSNC | 99617027 | | |

*Class "J" fuses not included.

30A Units supplied with (2) 1 in. N.P.T. raintight conduit fittings.

60A Units supplied with (2) 1 1/4 in. N.P.T. raintight conduit fittings.



TrukTrak® and TredTrak®

- Safeguards cables, hoses and cords from vehicle and pedestrian traffic
- TrukTrak® is ideal for industrial environments where trucks and forklifts are present
- TredTrak® supports pedestrian and light vehicle traffic



TrukTrak® and TredTrak® Systems

| Description | TrukTrak® | | TredTrak® | |
|--|-----------|----------------|-------------|----------------|
| | Hubbell # | Fastenal # | Hubbell # | Fastenal # |
| 5 Channel, blue and yellow | HBLTT5B | 0737644 | HBLTRED5B | 0737615 |
| 5 Channel end caps (pair only), yellow | HBLTT5ECB | 0737645 | HBLTRED5ECB | 0737616 |
| 3 Channel, blue and yellow | HBLTT3B | 0737640 | — | — |
| 3 Channel end caps (pair only), yellow | HBLTT3ECB | 0737641 | — | — |
| 2 Channel, blue and yellow | HBLTT2B | 0737639 | — | — |



Industrial Cord Reels and Hose and Air Reels

- Keeps cords and hoses organized and off the floor, saves time and money and improves safety while extending product life
- Provide safe convenient power and lighting for demanding industrial applications and environments
- Powder coated steel construction can be ceiling, wall or bench mounted



Industrial Power

Cord Reels

12/3 SJE0 Cable Type, 125V

| Cord End | Description | NEMA Style | Hubbell # | Fastenal # |
|----------------------------|----------------------|------------|--------------|-----------------|
| Connector | HBL5269C 15A | 5-15R | HBL45123C | 99607877 |
| | HBL5369C 20A | 5-20R | HBL45123C20 | 0735670 |
| Portable duplex outlet box | 15A gray duplex | 5-15R | HBL45123R | 99607873 |
| | 20A gray duplex | 5-20R | HBL45123R20 | 99607874 |
| | 15A gray GFCI duplex | 5-15R | HBL45123GF15 | 99609218 |
| | 20A gray GFCI duplex | 5-20R | HBL45123GF20 | 0735672 |
| Pivot Base 330° Rotation | | — | HBL340PB | 99607880 |

Air/Water Hose Reels

Low Pressure
Max Pressure 300 PSI



| Cord End | Cable Ft. | Hubbell # | Fastenal # |
|----------|-----------|-----------|-----------------|
| 1/4" ID. | 35 (10.7) | HBLHR2535 | 99609502 |
| | 50 (15.2) | HBLHR2550 | 99609106 |
| 3/8" ID. | 25 (7.6) | HBLHR3825 | 99609503 |
| | 50 (15.2) | HBLHR3850 | 99609504 |
| | 70 (21.3) | HBLHR3870 | 99609505 |
| 1/2" ID. | 35 (10.7) | HBLHR5035 | 99609506 |
| | 50 (15.2) | HBLHR5050 | 99609507 |



Harsh Locations



Hubbell's unfused disconnect and mechanical interlock switches are ideal for applications containing flammable gases or vapors and ignitable dusts or fibers. Hubbell devices are also suitable for use in outdoor or indoor damp, wet, and dirty locations, or in areas where frequent wash downs, heavy rain, or water-spray routinely occurs.



NFPA 33 Standard for Spraying Applications Using Flammable or Combustible Materials covers spray application of flammable or combustible materials by a variety of methods. Contains requirements for the maintenance of safe conditions as well as personal safety.

NFPA 34 Standard for Dipping, Coating and Printing Processes Using Flammable or Combustible Liquids covers fire and explosive hazards. Includes water-borne and water reducible materials.



Hazardous Location Non-Fused UL1686 Mechanical Interlocks

- Plug and switch are interlocked for superior safety
- UL1686 C1 listed and fully interchangeable with other UL1686 C1 devices
- Compact size and footprint for easy placement
- NEMA 4X with receptacle lid turned shut or with plug locking ring tightened

| Description | Circuit | Receptacle | | Plug | |
|-------------|---------|------------|-----------------|-----------|-----------------|
| | | Hubbell # | Fastenal # | Hubbell # | Fastenal # |
| 30 AMP | 2W 3P | HBLVSQ3023 | 99609534 | HBLVP3385 | 99609530 |
| 600V AC | 3W 4P | HBLVSQ3034 | 99609536 | HBLVP3485 | 99609532 |
| 60 AMP | 2W 3P | HBLVSQ6023 | 99609535 | HBLVP6385 | 99609531 |
| 600V AC | 3W 4P | HBLVSQ6034 | 99609537 | HBLVP6485 | 99609533 |

Notes: HBLVSQ 30 Amp models come standard with 1" drilled and tapped conduit openings top and bottom plus two 1" x 3/4" reducers and one 3/4" close-up plug for maximum flexibility. 60 amp models come with one 1 1/2" opening on top and bottom and one 1 1/2" close-up plug.



Hazardous Location Non-Fused Disconnect Switches

- Compact size provides application flexibility and cost savings
- Fewer cover bolts reduces installation and maintenance time
- Removable ductile mounting feet adjust to irregular mounting surfaces
- UL 98 certified switch
 - Class I, Div. 1 & 2, Groups B,C,D
 - Class I, Zones 1 & 2, Groups IIB+ H2, IIA
 - Class II, Div. 1 & 2, Groups E,F,G
 - Class III
 - NEMA 3, 4, 4X, 7(B,C,D), 9(E,F,G)

| Description | Rating | Hubbell # | Fastenal # |
|---|--------|--------------|-----------------|
| Disconnect switch, 3 Pole 600V AC/230V DC | 30A | HBLB7NFD13A | 99609250 |
| | 60A | HBLB7NFD26A | 99609252 |
| | 100A | HBLB7NFD21A | 99609248 |
| Disconnect switch with auxiliary contact, 3 Pole 600V AC/230V DC | 30A | HBLB7NFD13AA | 99609251 |
| | 60A | HBLB7NFD26AA | 99609253 |
| | 100A | HBLB7NFD21AA | 99609249 |



Hazardous Location/Confined Space Lighting

- Fluorescent and incandescent light bulbs styles available
- Low voltage confined space entry lights are suitable for hazardous locations

Hazardous Location Lights

| Description | Wattage | Lumen Output | Cord Type | Hubbell # | Fastenal # |
|---|---------|--------------|-----------|-------------|-----------------|
| Fluorescent, Class 1, Div 1, Groups C & D, Class 2, Div 1, Groups F & G, 12V, inline transformer, 60 ft. cord | 26 | 1800 | 16/3 SOW | HBLXF6012V | 99609661 |
| Incandescent, Class 1, Div1, Groups C & D, 12V, inline transformer, 60 ft. cord | 75 | 720 | 16/3 SOW | HBLXI6012V | 99609663 |
| Fluorescent, Class 1, Div 1, Groups C & D, Class 2, Div 1, Groups F & G, 120V, less plug, 50 ft. cord | 26 | 1800 | 16/3 SOW | HBLXF50120V | 99609660 |
| Incandescent, Class 1, Div 1 Groups C & D, 120V, less plug, 50 ft. cord | 100 | 1230 | 16/3 SOW | HBLXI50120V | 99609662 |



Cordless Hazardous Location Light

| Description | Wattage | Lumen Output | Hubbell # | Fastenal # |
|---|---------|--------------|-----------|-----------------|
| Intrinsically safe, Class 1, Div 1 Groups C & D, with universal charger | 9 | 378 | HBLIS300 | 99609664 |

H-MOSS®|MAXX™ Harsh Sensors

- Watertight occupancy sensor is ideal for energy savings in harsh environments
- Line and low voltage option are available
- Watertight OPTIMYZER® is IP65, NEMA 3R watertight and outdoor rated

Outdoor Rated Watertight Wall Mount PIR Sensor

IP66, NEMA 4X

| Description | Voltage | Hubbell # | Fastenal# |
|---|---------|-------------|-----------------|
| Heavy duty wall or pendant mount PIR sensor; -40°F to 149°F (-40°C to 65°C) operating temperature range; isolated relay, photocell and 160° of coverage | 24V DC | AHP1600WRP* | 0778862* |



Extreme Temperature PIR Ceiling Sensor

| Description | Company | Hubbell # | Fastenal# |
|---|---------------------------------------|----------------------|----------------------------------|
| Upgraded ceiling PIR sensor; isolated relay and photocell; -40°F to 149°F (-40°C to 65°C) operating temperature range; Use ACIPE to make NEMA 4X watertight | 24V DC Sensor NEMA 4X Enclosure | AHP1500CRP* ACIPE | 0778863 0769859 |



Watertight OPTIMYZER®

IP66, NEMA 3R

| Description | Voltage | Hubbell # | Fastenal# |
|--|--------------|-------------|----------------|
| PIR sensor, relay with photocell | 120-347V AC | HMHB21UPCW | 0769810 |
| PIR sensor, 2 relays with photocell | 120-347V AC | HMHB22UPCW | 0769811 |
| PIR sensor, 1 double pole relay with photocell | 208, 240V AC | HMHB23APCW | 0769812 |
| PIR sensor, 1 double pole relay with photocell | 480V AC | HMHB23BPCW | 0769813 |
| PIR sensor with photocell | 24V DC | HMHB2LVPCW* | 0769814 |



* Must use control unit CU300HD

Control Unit

| Description | Voltage | Hubbell # | Fastenal# |
|---|-------------|-----------|----------------|
| Control Unit for use with AHP1600WRP, AHP1500CRP and HMHB2LVPCW | 120-277V AC | CU300HD | 0778864 |



NEC® 500-503, 505

covers the requirements for electrical installations in locations classified as hazardous due to the materials handled, processed, or stored in those locations.

NEC 516

covers the regular or frequent application of flammable liquids, and combustible liquids, and combustible powder by spray operations at temperatures above flash points.



Available eTools

Food Processing eTour



This interactive, virtual tour of a food processing plant takes visitors through 15 unique spaces that include food processing areas such as material preparation, mixing and processing as well as cooling, cooking and packaging. Other areas include employee services, facility management and offices. As users navigate their way through the virtual plant, the eTour demonstrates where and how Hubbell products can be deployed to offer safety, efficiency, performance, and durability solutions in these spaces. Visit www.hubbell-wiring.com to take the tour.

Twist-Lock® App

When you're on the go... Use the New Twist-Lock® App from Hubbell.

Available on the
App Store



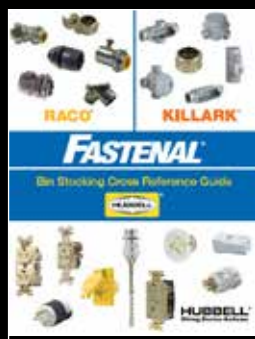
Download it today!

GET IT ON
Google play



Available Literature

Hubbell offers an extensive literature library for product support. Downloadable PDFs are available on line.



Bin Stacking Guide
#9704212



Safety Brochure
#9702819



Watertight Brochure
#9704807

HUBBELL®
Wiring Device-Kellems



FASTENAL®

**Find Hubbell Wiring-Device Kellems Products
At Your Local Fastenal Store or Fastenal.com**