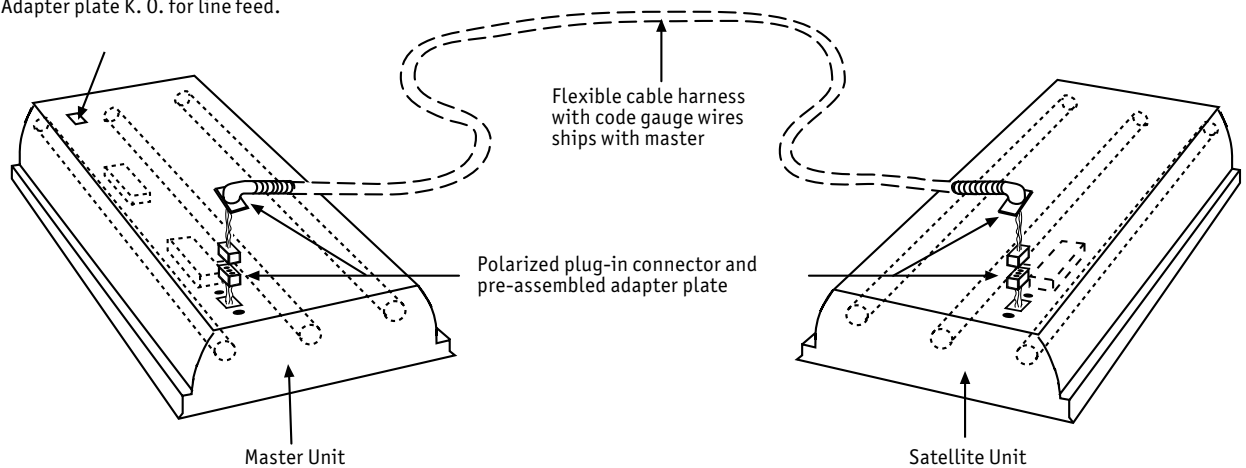


WIRING OPTIONS

Master/Satellite Wiring Harness

DETAIL FOR 2' x 4' 3-LAMP LUMINAIRES

Adapter plate K. O. for line feed.

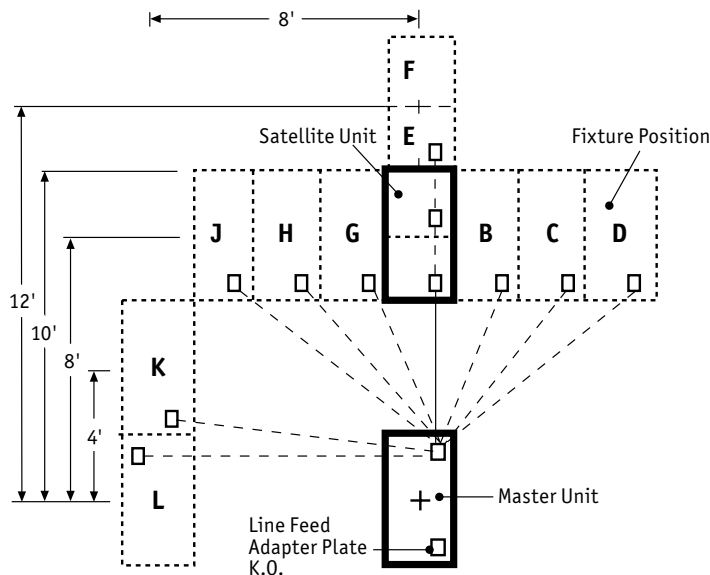


Ballast	Master	Satellite
E, EP	(2) 2-Lamp	(1) 2-Lamp
24E, 24EP	(1) 2-Lamp + (1) 4-Lamp	None

All wired for inboard-outboard

- Master/satellite units bear appropriate UL labels.
- Single units must be ordered to fill odd number layouts.
- Harness may be ordered with any Columbia Lighting 3-Lamp recessed luminaires.
- In master/satellite pairs requiring emergency inverters, UL requires that the inverter be located in the master and power lamps in the master.
- Many programmed start ballasts including all dimming and step dimming ballasts are not suitable for master/satellite applications due to lamp lead length restrictions. See ballast vendor technical data for more information.
- Available on most recessed fixtures. Not available on M46, WT, or AC series.

LAYOUT OPTIONS



Position	Minimum Length Harness Required
A	6'
B	7'
C	8'
D	9'
E	8'
F	10'
G	7'
H	7'
J	8'
K	9'
L	9'
Harness length must be specified on order.	

Caution: Some electronic ballasts can only be wired with harnesses less than 11' or are not suitable for remote mounting. Consult with ballast manufacturer before specifying.

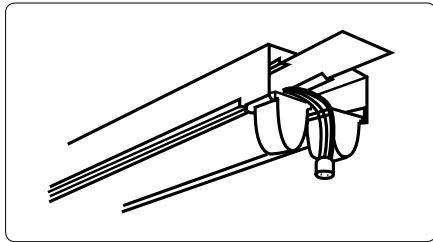
WIRING OPTIONS

Branch Circuits

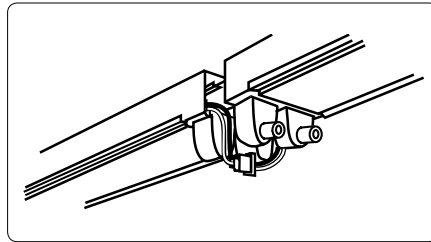
PLUG-ON BRANCH CIRCUIT FLUORESCENT WIRING

Plug-On Branch Circuit Wiring System features complete branch circuit wiring. You supply the feeder; Plug-On does the rest. The system will handle all popular voltage/phase combinations – 2 or 3 wire, 120V, 277V, or 240V, and 3-phase, 4 wire 120/208V or 277/480V-20 amp rating. It is UL listed and combines the following features:

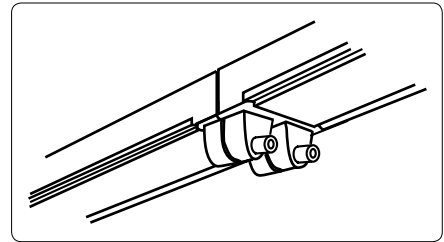
- Available on all continuous row surface mounted fixtures for up to 20 amp circuit runs. Supplied as single or multiple circuit with these fluorescent fixtures: Surface (PT, AW), Strips (CS, CN, K, LB, KT, SS), Industrials (KL, CSR).
- Available for easy wiring connections for single circuit (BC1), multiple circuits (BC2A, BC2B) or alternating AB or ABC patterns (BC2X, BC3X) for up to 4 circuits in a row.
- May be used with any conventional hanging method – chain, Zip-Tee, slide clamp, stem, or stud.
- Add "G" to option to add a ground wire in harness
- Complete, ready for connection as shipped – no separate parts to misplace. Connectors snap-lock for positive mechanical connection and are color coded for instant identification.
- Carton and channel marked for ballast circuit identity – aids installation, distribution, and maintenance.
- Free factory consulting on coordination of order is recommended to assure proper application.



Mount fixture in any economical, familiar manner.



Make electrical connection at same time as mounting next fixture. No need to come back. Power must be off when making connection.



Add lamps and move on to next fixture.

Catalog Number	-Suffix	Description
1 Circuit: 120V-277V (2 Wire)	-BC1	Ballasts connected to black/white wires
2 Circuit: 120V/240V or 120-277V (3 Wire)	-BC2A	Ballasts connected to black/white wires
	-BC2B	Ballasts connected to red/white wires
2 Circuit with 2 ballasts in fixture (3 Wire)	-BC2AB	Black and red wires. Ballast on each plus white. Add L/R option for left/right (in-line) switching
2 Circuit Alternating (3-wire with crossover for A-B-A-B circuit pattern)	-BC2X	Black and red wires. Ballast connected to first position plus white wires
3-Circuit Alternating (4-wire with crossover for A-B-C-A-B-C circuit pattern)	-BC3X	Black, red, and blue wires. Ballast connected to first position plus white wires
3 Circuit: 3 Phase 120V/208V or 277V/480V (4 Wire)	-BC3A	Ballasts connected to black/white wires
	-BC3B	Ballasts connected to red/white wires
	-BC3C	Ballasts connected to blue/white wires
4 Circuit (5 Wire)	-BC4A	Ballasts connected to black/white wires
	-BC4B	Ballasts connected to red/white wires
	-BC4C	Ballasts connected to blue/white wires
	-BC4D	Ballasts connected to yellow/white wires

Standard wiring in fixtures with multiple ballasts

In board, out board wiring is standard in fixtures or master/satellite pairs with two or more ballasts and three or more lamps in cross section (except in high bay products).

In tandem-length fixtures lamps side by side will be on the same ballast. Specify L/R option for left/right switching and for most even light distribution when switching fixtures in continuous rows.