

EXPERIENCE

PROGRESS

VOLUME 8

TIPS & TRENDS FOR LIGHTING SOLUTIONS

A BLEND OF OLD AND NEW

Our partners in great design mix old and new for a fresh look / 12

2021 TREND WATCH: KITCHEN & BATH

New ways to light
popular rooms / 04

LED LIGHTING WITH STYLE & FLAIR

Designs made possible
with LED tech / 10

LIVING LIFE OUTSIDE

Outdoor spaces
with inside style / 20

PLUS HOW CEILING FANS HAVE EVOLVED FROM A
PRACTICAL NEED TO A FASHIONABLE FOCAL POINT / 16

Volume 8

LIGHTING TRENDS TO BRIGHTEN EVERY HOME

Fresh styles, the latest technology and new materials are watchwords for 2021 lighting designs. Many of us are spending more time at home, and new lighting makes your home more efficient, comfortable, and stylish. Explore ways to illuminate the moments of your lives in this issue of Experience Progress.



(left to right) Kylo hanging pendants, Clarion one-light, Willacy fan, Kylo chandelier

Contents

TREND WATCH

2021

KITCHEN & BATH

These spaces top the list of home design evolution

04



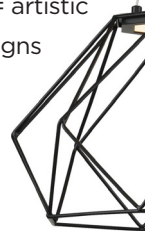
FOCUS ON FINISHES

LED LIGHTING WITH

Style & Flair

Minimalist design + abstract light movement = artistic lighting designs

10



BONUS: Muted tones, luxurious metallics, organic finishes for 2021 appeal / 08



A Blend of Old & New

Design Influencers blend modern & classic for a fresh look

12



16

Fans are re-imagined into fashionable, functional décor statements

CEILING FANS: A STATEMENT OF STYLE



living life—outside

Indoor style for outdoor living

20

DESIGN EVOLUTION

2021

TREND WATCH

Two rooms that top the renovation wish-list are the kitchen and bath. Not only are they smart investments to make for resale, but these rooms have become increasingly important as we've all had to re-evaluate how we live in our homes over the past year.

The Kitchen

More than ever, it's the center of the home, the hub of stay-at-home activity, and, oh yeah, a place to create meals for your family and friends. It's the room where many of us are investing our renovation budgets in 2021.

Thorpe five-light chandeliers



Keeping Things Natural

In 2021, popular kitchen trends start with the return of natural wood cabinets. However, these cabinets are finished in subtly grained, lighter natural woods and are typically cleaner in design than those of the past. Stunning stone countertops complete the look, especially strongly veined, large format pieces extended up the wall to create a dramatic backsplash. Tile is still a favorite for backsplashes, especially tiles that are handmade or that have a handcrafted look and feel.

Fashion-Forward Finishes

Fashion-forward finishes for cabinet pulls, sinks, appliances and light fixtures feature gold, brass, black, and even copper, which is re-emerging as a favorite vintage look. Dark surface countertops contrast beautifully with these luxury metallic finishes: look for them in honed or matte finishes.

Dining Drama with Duplicates

In general, light fixtures are considered a key element in a kitchen design scheme, with multiple pendants being a favorite way to add drama to the kitchen scene. Think about installing under cabinet lighting for added function, wall sconces for accent lighting, and overhead lighting that makes a statement.



Benton Harbor pendants, Hinton sconces



*Chastain chandeliers
New - Summer 2021*



The Bathroom

Say goodbye to boring bathrooms! It used to be a room where form followed function. Now style takes center stage in the bath, creating the ultimate area to relax and recharge. The bathroom has evolved into a room that is a soothing place to retreat, relax and unwind.

Same Spaces, New Looks

Setting the Tone with Black and Gold

Gold tones lighten the look while bringing elevated style to all-white baths. Moody accents in black create luxe and inviting spaces for relaxation.



Aiken three-light



Merry three-light



Lowery sconce

Statements in Small Spaces

Minimal luxury is a pared-back look that relies on one primary element, like a luxurious marble shower making it the star of the show in a room that relies on simplicity in the rest of the décor and fittings. Statement lighting in the bath is popular, whether it's in the form of a large pendant or chandelier, or try vanity lights that mix chrome with gold and brushed brass for an element of glamour.



Hartwick sconces



Status chandelier and sconces

TREND WATCH BONUS

FOCUS ON FINISHES

From soft muted tones to luxury metallics and organic finishes that add a natural touch, finishes are a top focus on today's lighting styles. Here's our design guide to the latest lighting finishes.



GLASS AS ART

LUXURIOUS TOUCH

Clear and textured glass elevates simple forms into works of art.

Gold finishes shine throughout the collections to offer a warming, luxurious touch and can also serve as stunning contrast with natural materials in room settings.

Lowery chandelier, Penn pendants

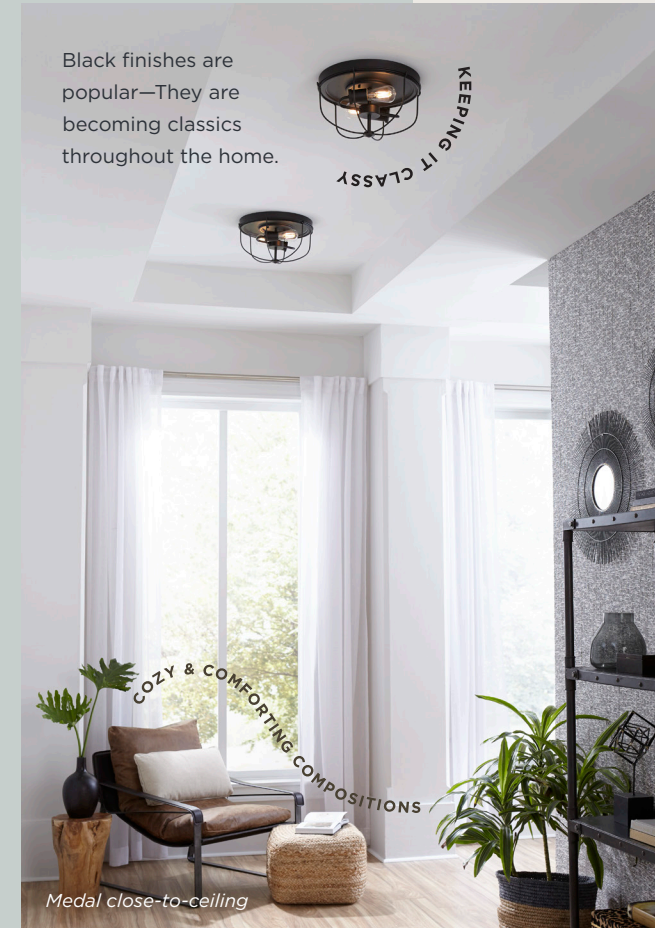
Stay Cozy

Naturalistic and sculptural shapes create unique light compositions that are sure to be focal points wherever they are installed. Cozy and comforting are the keywords, leading to a melding of modern and traditional.



Terrazzo pendant

NATURAL TOUCH



Black finishes are popular—They are becoming classics throughout the home.

KEEPING IT CLASSY

COZY & COMFORTING COMPOSITIONS

Medal close-to-ceiling

Organic themes that bring a touch of the outdoors inside pop up throughout lighting collections, using unexpected materials like Terrazzo.



Tremont pendants

WHAT'S MoTra?

"Clear glass brings a modern edge. Paired with traditional forms it creates an updated traditional style, also called "MoTra" — a fusion of Modern and Traditional — while seeded and textured artisanal glass remains current for a relaxed and comfortable look," says Colleen Visage, VP Brand Management.

LED LIGHTING WITH

Style & Flair

The advancement of LED technology makes an infinite number of fixture designs possible due to their small size and the ease in which fixture designers can incorporate them into various form factors.

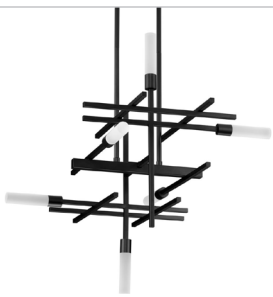


Our latest LED lighting use edge-lit LED technology. The LED light sources are integrated right inside the fixture: when the fixture is turned on, it bounces downwards through a diffuser, creating seamless, continuous glowing light. There's no need for bulky light bulbs, and the LED lights last for years without having to be replaced.

Geodesic takes contemporary spaces to a new level as it radiates a magical beauty from a uniform, continuous disc of light glowing through an airy structural frame. A simple, cable-hung suspension adds to the pendant's sleek style.

GEODESIC

QUADRANT



With its precise arrangement of light, our Quadrant LED collection defines space with a minimalistic approach. Metal struts tipped with integrated LED lights are placed in a modern geometric design, giving the layered frame an impression of substance while creating airy illumination in a space.

PIVOT



Pivot LED features angled arms that rotate around a central axis. Lustrous LED lightbars within the arms create ambient light. An integrated downlight shines down to illuminate tasks on the surface below.

KYLO



The Kylo multi-light pendant presents a contemporary splash of minimalist style as it cascades downwards in an arrangement of seamless light. Or try the Kylo chandelier: it adds drama with sleek metal bars capped with solid tubes of light that hang in a stunning asymmetrical form.

Bring a fresh, modern look to any space.

Our new decorative LED fixtures are created from bold architectural forms that capture the imagination and inspire endless design opportunities to make a statement inside your home.

PLANCK



Clean light bars create slices of light that define the Planck LED collection. A trio of light bars comprises the sleek Planck three-light chandelier. Individual bars of light enhance the elegance of wall sconces and single-bar pendants to complete the collection.

SPOKE



Modern design meets the future of industrial style in the Spoke LED pendant collection. A slim disk of integrated LEDs casts an ethereal glow of even light. Sleek rods anchor the luminous circles for a retro yet contemporary vibe that complements modern spaces.

A Blend of Old & New

It may seem like a contradiction, but home design can be both modern and traditional in style. Design influencer Melissa Tyler, of Instagram's @lakeandlumber, captivates her fans with her look that blends modern and classic in a way that ensures her home will look fresh for years to come.

"I want a look that won't be out of style," said Melissa. "As a DIY-er, I love to give my builder home a custom feel." The traditional part of her designs typically starts with elements such as accent walls. Then, she adds a modern personality with paint color and lighting.

"For me, lighting is one of the most important parts of any design."

Our last house came with a basic lighting package and I always felt that it took away any custom feel. I quickly changed out many of the lights, but it wasn't cost-effective to change them all. When we built our new home, I was thrilled to be able to customize the lighting. I never want our home to look like anyone else's."

People often ask about two Progress lighting pieces in her home, the Penn pendants over the kitchen island and the Blakely chandelier in the dining room. Both pieces mix a traditional light

fixture style with contemporary elements, a look she loves.

Melissa started her Instagram journey a mere year ago, and last spring was also when she decided to take tools in hand and learn woodworking skills.

"My first project was building a porch swing. My husband was too busy to do it, so he taught me how to use the saw and some tools. It became my creative outlet. It's empowering to be able to do things myself." Overall, wood trim and paneling play a big part in her design decisions: she loves the classic look and feel of wood, and it's a treatment she can do on her own to make an impact quickly and relatively inexpensively.

Melissa Tyler
@lakeandlumber



Penn pendants

Here are some design tips from Melissa to get her look:

Choose your statement piece first. For me, this is usually lighting. Often, we have a vision of how we want a space to look. You don't want to build out your space and then struggle to find your statement piece.

Don't forget about the details, especially lightbulbs. Choose the proper bulbs for your fixtures. Now that clear glass globes and candelabra-style chandeliers are popular, try LED Edison-style bulbs, which are energy-efficient, last for years, and will take the design to the next level. And with so many shapes and sizes available, you can change the look of a single fixture dramatically just by changing the bulb.

Don't be afraid to mix styles to get the look you want. Shiplap, for example, is a Farmhouse design staple but adding a moody paint color and lighting with clear glass globes gives it modern appeal.



Blakely chandelier

Stephen Quick IV, of Stephen Alexander Homes, is another fan of the Modern Traditional look. He and his wife recently renovated their traditional style home, all because they wanted to change some light fixtures.

“Replacing the lighting was the impetus for the renovation,” said Stephen.

“My wife loves traditional style, and I lean more modern. With Progress, we found the perfect fixtures to suit both of our styles.”

The Quicks chose the spherical Conestee pendant for the breakfast area, whose dual-tone finish pairs dark graphite with weathered gray accents, combining modern and rustic style. Two Hinton sconces above the dining room fireplace mantel are finished in a classic, soft antique bronze offset by modern, clear glass shades and contemporary swing arm styling.

The open-plan main living area showcases beautiful millwork found throughout the home. Since the Quick’s have eight children, they chose to close off a family room area using gorgeous French doors topped with transom windows, allowing natural light to stream in but giving some much-needed privacy. This room features a fireplace highlighted by a pair of Hemsworth sconces, whose aged oak finish and barn-inspired details give a touch of rustic character. The Farris ceiling fan keeps the room comfortable.

Most of the fixtures the Quicks selected required a finishing touch: the proper bulbs. Stephen says: “The bulbs make the fixture; you need the right color spectrum and the right size. I recommend Edison-style bulbs at 3000K color temperature that are dimmable.”



Stephen Quick IV
[@stephenalexanderhomes](#)


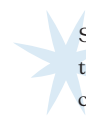


*Farris ceiling fan
Hemsworth sconces*

Hinton sconces, Conestee pendant



Here are Stephen’s design tips to get the Modern Traditional look:

-  The easiest way is through paint and light fixtures. Choose a tonal color palette: grays, whites and earth tones for a contemporary feel.
-  Select simple, impactful lighting fixtures that inspire the rest of the room’s design. Stephen and his wife chose fixtures with a historical theme and a modern edge from clear glass shades and dark finishes.

“Progress fixtures always complete the look. There is just enough modern and classic to make us both happy,”

LATEST AND GREATEST IN CEILING FANS

For years, fans have been purely functional. Today, modern ceiling fans don't blend in with existing décor; instead, they serve as a statement piece or even a room's focal point.

We love that the ceiling fan has been reinvented into a fashion-driven accessory that works with all decor styles without losing its function. Not sure what your style is? We've paired some of our favorite fans with trending design styles.



MODERN

Modern design comes to the forefront in the ceiling fan category, with fans that emphasize sleek looks appropriate for various settings. **Kaysville** offers a modern industrial style, with beautiful long bent blades that appear to be held only by a simple metal band.



COASTAL

Coastal uses beach-inspired accents, organic furnishings and has an overall relaxed feel. Try **Alleron**, whose aviation-inspired blades bring a cooling breeze to any room.



MODERN CRAFTSMAN

Clean lines and hand-worked wooden elements characterize a Modern Craftsman home, contributing a casual vibe. Hang a sleek fan like **Braden** from a paneled ceiling for Craftsman style with a modern edge.



URBAN INDUSTRIAL

Urban Industrial style has an edgy vibe stemming from warehouse origins. **Sanford's** fandelier design delivers ultra-powerful air movement in a vintage cage frame.



FARMHOUSE

Midvale has the nostalgic appeal of Farmhouse style. A rustic cage frame, vintage-style LED bulbs, a seeded glass shade, and banded metal ceiling canopy completes the charming look.

MID-CENTURY MODERN

Quirky and functional, this style's flair comes from its modern, yet retro, juxtaposition. Designers look for statement pieces like the clean lines of the large-scale **Vast** fan that powerfully moves air while completing the contemporary look.



GET SMART WITH YOUR FAN

The era of 21st-century controllability of fans is here with the introduction of SMART Wi-Fi. Once installed, easily control these fans using a voice assistant, tablet or smartphone. Progress Lighting is integrating the technology into ceiling fans that feature modern, industrial and coastal influences.



VERNAL refreshes a room's décor with elegant curves and an expansive 60-inch, five-blade span offering the ultimate in design-savvy comfort.



WILLACY has a striking design inspired by flowing ribbons that swirl around a gleaming center hub to create a central breeze.



CHOOSE YOUR FEATURES

SIZE IT TO YOUR SPACE.

Size is important when selecting a ceiling fan. If a fan is too large, it can overwhelm the space. On the flip side, if the fan is too small, the airflow may be inadequate. Here's how to size it right:

- 76 - 144 sq. ft. - 36" to 42"
- 145-225 sq. ft. - 42" to 50"
- 226-400 sq. ft. - 50" - 54"
- 401 sq. ft or more - Over 60"

Form + function: our ceiling fans offer the best of both. Consider these factors when selecting your fan

YEAR-ROUND USE.

Do you want to use your ceiling fan year-round? Select a fan with reversible blades for the option to circulate cool air in summer or warm air in winter.

EFFICIENCY.

To save energy and green your home, consider an ENERGY STAR-rated fixture.

LIGHTING.

To get in on today's lighting trends, go for a layered lighting design in your space by installing a light kit or selecting a fan with a pre-installed fixture.

CONTROL.

Some fans feature full-range dimming and full-function remote control capabilities to offer added convenience in controlling a room's environment.



Designer Tips FOR FAN SELECTION

When guiding clients through fan selections, Piper Stromatt uses a three-step process:

LOOK AT THE SPACE.

What other lighting is in the space if any? If there is, it will provide additional luminary value, determining whether you do or do not need an additional light fixture on the fan.

DETERMINE THE OVERALL FUNCTION.

The fan's overall function will determine how many blades you will need and the size of the fan. The number of blades and the fan's size will maximize the airflow and functionality for your space.

DECIDE ON THE AESTHETIC.

Our design firm sees mid-century modern, art deco, and other trends regaining popularity for home design, offering hints to how fan trends are evolving. I expect to see more of these influences start to show their true colors using mixed metals, transparent fan blades, simplistic design, minimalist industrial design and more.



living life outside

Outdoor living is more than a trend: it's become a new way of life. These days, who doesn't want to spend as much time outdoors as possible? The focus has shifted from outdoor entertaining to outdoor living spaces that have defined areas for eating, relaxing and cooking, and a design that's an extension of the home's interior style.

Terrace pendant, Montague fan

Terrace furnishes an elegantly rustic focal point with its captivating circular silhouette, central seeded glass shade and coppery-bronze woven accent band.

Terrace



New - Summer 2021

Pawley



Pawley has an airy basketweave design offering a global feel and coastal warmth. The synthetic rattan frame has a graceful, lattice-like design and a lovely, hand-applied finish that provides charm and depth.

Navarre



The Navarre pendant defines indoor-outdoor gathering spaces with statement-making style. Several rectangular cubes nest within each other, forming a breezy contemporary angular silhouette highlighted by shimmering seeded glass panels that cast a pleasing glow.

Manteo



Manteo features a dense woven design that infuses outdoor spaces with a rugged style. Constructed of natural-looking synthetic rattan, Manteo adds a unique warm touch and an inviting appeal to outdoor living areas.



Brenham features wooden rings that bookend the top and bottom of the fixture's black metal frame, tied together by a transparent glass shade that adds extra visual character.



Brenham

Lighting for Outdoor Living

Outdoor lighting has evolved: new fixtures go beyond the ordinary by bringing indoor style to outdoor living spaces. Our designers re-imagined traditional outdoor materials into sculptural designs that bring an earthy texture to streamlined silhouettes, proving that outdoor lighting can be beautiful and functional. And talk about versatility: you can install these pendants inside your home, too, for an added organic touch to any space.

Making an Impression

WE LOVE SEEING OUR LIGHTING IN ACTION. HERE ARE OUR HIGHLIGHTS FROM INSTAGRAM!



Build.com • Glandon



Rachel Royster • Mauldin



Berkeley Homes • Trestle



Addison Wonderland • Spicewood



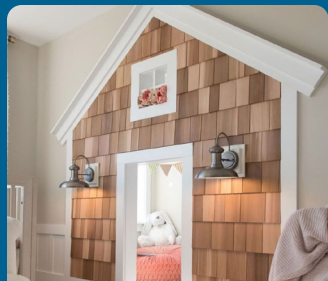
Toll Brothers x RYI Design • Wandermere



Volnay Capital • Globe LED



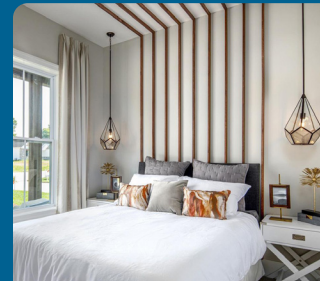
Fine Finishes Design • Cylinders



KC Homes • Brookside



Toll Brothers • Windbluff



Schumacher Homes • Cinq



Landmark Homes • Rainey



Savas Construction • Finn



SHOW OFF YOUR PROJECT USING OUR HASHTAG AND BE FEATURED ON OUR INSTAGRAM!

#ProgressLighting



Wandermere
P400192-160

Onshore
P710070-160

MAKE YOUR STATEMENT.

As part of the Point Dume™ Collection by Jeffrey Alan Marks, Wandermere's elegant out-stretched arms and curved metal shades create an architectural presence for any space. Paired with the Onshore wall bracket, these fixtures complement this stunning Coastal style living room.

PROGRESS LIGHTING
DESIGN+SERIES™

POINT DUME™ COLLECTION



Sandbar
P500198-160



Shearwater
P500196-030



Surfrider
P500200-141

Shop the full collection:
www.progresslighting.com/jeffreylanmarks

PROGRESS
LIGHTING™

