



# HEALTHCARE SOLUTIONS GUIDE



# HEALTHCARE SOLUTIONS



Healthcare facilities are depended on for the reliability of their services, procedures and patient care.

Hubbell's healthcare solutions deliver the best in patient experience, facilities management, safety and regulatory compliance.

## Meeting Needs From All Perspectives Human Centric Technology - Controls - Lighting

The core of Hubbell's product development strategy is a customer-centered approach. With an eye on the evolving needs of the marketplace, Hubbell constantly seeks to provide better solutions for a rapidly changing world.

### + Improving Patient Experience



### + Facilities Management Efficiency



### + Technical Innovation and Performance



### + Safety & Regulatory Compliance



## HEALTHCARE FACILITIES

- Health Care Campus
- Primary Care Clinics
- Urgent Care Clinics
- Rehabilitation Centers
- Same Day Surgical Centers
- Medical Laboratories
- Imaging and Radiology Centers
- Behavioral Health Care Centers
- Senior Living Centers

# ONE HUBBELL ADVANTAGE



## Table of Contents



**Patient Rooms (Finished).....6**



**Patient Rooms (Rough-In)..... 18**



**Nurses' Stations ..... 30**



**Clinical Laboratories..... 38**



**Surgical Suites ..... 46**



**Common Areas & Public Spaces ..... 54**



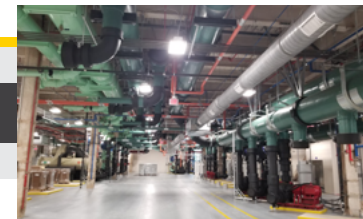
**Corridors & Stairwells..... 62**



**Office & Meeting Spaces ..... 68**



**Data Centers..... 76**



**Engineering ..... 90**



**Parking & Exterior (Indoor) .....100**



**Parking & Exterior (Outdoor).....108**



**Roof.....122**

# Patient Rooms (Finished)



## MediMode™ Behavioral

MediMode™ Behavioral, a multi-function recessed patient light for behavioral health, provides the primary lighting requirements for the patient environment while addressing the safety and security concerns of behavioral health spaces.



### MediMode™ Behavioral Features:

- Recommended by the New York State Office of Mental Health
- Available in a multi-function model (DS option) that provides ambient/reading and exam illumination and in an ambient model (SS option)
- One-piece CRS door frame with 0.250" clear polycarbonate lens and tamper-resistant hardware
- Available in 2x4 and 2x2 models for flange applications
- Optical assembly and electrical components accessible from below the ceiling
- The construction is designed to reduce risk of ligature, hiding of contraband, and general damage to the luminaire.

### Applications:

- Addiction treatment facilities
- Emergency rooms
- Patient rooms

## Evexia LED Ambient/Reading Bed Light

Evexia is designed to meet the ambient and reading lighting needs in patient rooms and assisted living facilities. The luminaire has a low profile that reduces the visual impact on the wall. The contoured shape, smooth surface and anti-microbial finish support infectious disease control efforts. Evexia blends a simple design, solid state performance, and durable construction for a bed light luminaire that addresses the varied challenges of the patient bed environment. The flowing lines and gentle transitions in its form are aesthetically appealing and simplify routine cleaning. Dual optical compartments provide high quality, low glare illumination for both ambient and reading tasks, while the die cast and extruded aluminum construction withstands the daily rigors of healthcare spaces.



### Evexia Features:

- Die-cast end-caps and extruded aluminum body provide durability.
- Four standard colors with anti-microbial compound additive that inhibits the growth of microbes.
- Provides ambient and reading illumination with optional night light.
- Multiple switching and control options.

### Applications:

- Patient rooms
- Emergency room examination
- Physician's examination
- Room examination

Niteway™

The NiteWay patient room night light is the ideal choice for the demands of healthcare environments. It combines an aesthetically pleasing form with low glare performance, rugged durability and water-tight construction. NiteWay is also suitable for commercial, hospitality and residential applications.



**Niteway Features:**

- Simple, low profile form is architecturally-pleasing and can be easily cleaned
- Available in either a vertical or horizontal orientation and with either white or amber LEDs
- No visibly exposed fasteners
- Rated for wet location environments
- Standard antimicrobial finish available in three standard colors
- Available with optional photocell control

**Applications:**

- Healthcare
- Commercial
- Hospitality
- Residential

NX Distributed Intelligence™

Hubbell Control Solutions' NX Distributed Intelligence platform delivers a seamless lighting control solution. NX is capable of scaling from standalone fixture and room control applications to networked enterprise deployments. NX operates using wired, wireless and hybrid connectivity with native BACnet® support.

NX portfolio of compatible products provides the flexibility to easily scale from a single fixture to a complete building using a broad selection of multi-tiered control strategies.



**NX Distributed Intelligence Features:**

- Multiple deployment options: wired, wireless and hybrid
- For indoor and outdoor applications
- Native BACnet support
- Supports Hubbell Lighting's SpectraSync™ Color Tuning Technology
- Ease of implementation with self-configuration feature and mobile app tool

**Applications:**

- General indoor and outdoor

LITEISTRY™ Family

The LITEISTRY™ family offers a broad palette of architectural downlighting solutions with consistent aperture appearance, quiet ceiling design, and optical performance. Create spaces with the confidence that LITEISTRY™ will complement your vision to transform every architectural space into a masterpiece.



LITEISTRY™

**LITEISTRY™ Family Features:**

- Available in downlight, adjustable, wall wash and cylinder solutions
- Delivers a unified family appearance across 3 aperture sizes and 2 shapes
- 50° visual cutoff to source and source image to maintain the focus on the space - not the ceiling
- Available in a variety of beam distributions, dimming protocols, and housing configurations
- SpectraSync™ Color Tuning Technology and PowerHUBB™ PoE Lighting and Control options available

**Applications:**

- Offices
- Lobbies
- Conference rooms
- Hallways
- Public spaces
- Waiting room
- Dining areas

SNAPConnect® Style Line® Illuminated Switches

Hubbell's SNAPConnect Style Line Illuminated Switch is built to provide long life: It features large silver alloy contacts that reduce contact erosion, pilot or illuminated versions that make use of LEDs to provide extended illumination, and a corrosion-resistant steel/ zinc-plated bridge. The switch is illuminated in blue or red, and is offered in four colors. Available in 15A, 120-277V AC or 20A 120-277V AC, and in single-pole or three-way configurations. With a snap-in connector, wiring the connector into the wall box can be done prior to trim-out. This feature also makes switch replacement quick and effortless.



**SNAPConnect® Specification Grade Illuminated Style Line® Decorator Series**

Description	Toggle Color	15A, 120-277V AC		20A, 120-277V AC	
		Single Pole	Three Way	Single Pole	Three Way
Illuminated Blue LED, Light On with Load Off, Rocker	Ivory	SNAP2101ILINA	SNAP2103ILINA	SNAP2121ILINA	SNAP2123ILINA
	Red	SNAP2101ILRNA	SNAP2103ILRNA	SNAP2121ILRNA	SNAP2123ILRNA
	White	SNAP2101ILWNA	SNAP2103ILWNA	SNAP2121ILWNA	SNAP2123ILWNA

**Right Angle Pigtailed Terminal**

Description	Standard	Assembled in USA
Right Angle, clear terminal with 6-inch leads solid wire.	SNAP1RA	SNAP1RNA
Right Angle, clear terminal with 6-inch leads stranded wire.	SNAP2RA	SNAP2RNA

Many of these products are Assembled in USA, as indicated, and many are Buy American Compliant. Please contact Hubbell with any certification requirements.

**Extra Heavy Duty GFCI Receptacles**

When the environment calls for the ultimate protection and reliability, Hubbell Extra Heavy Duty GFCI Receptacles are on the job. Tamper resistant and weather resistant, Hubbell Extra Heavy Duty GFCIs limit improper access to energized contacts with patented protection technology. They automatically and continually test and monitor for protection with self-test diagnostics and power and ground fault indicator lights. Featuring a durable face with V-0 flammability rating, Extra Heavy Duty GFCIs from Hubbell eliminate false assumption of protection by removing power at the face if reverse wired. They are available in 15 and 20 Amp versions as well as Hospital Grade and a variety of colors.



**AUTOGUARD™ Self Test GFCI Receptacles, Tamper-Resistant, Weather Resistant**

Description	Color	15A 125V AC	20A 125V AC
Flush, polyester face, back and side wired, multiple drive screws.	Black	GFR5262SGBK	GFR5362SGBK
	Ivory	GFR5262SGI	GFR5362SGI
	White	GFR5262SGW	GFR5362SGW
	Other Colors*	GFR5262SG*	GFR5362SG*

Other colors include the following. To order, please replace with the color code in parenthesis. Almond (AL), Brown (No Suffix), Gray (GY) and Red (R).

**SNAPConnect® Hospital Grade Decorator LED Indicator Receptacles**

Available in eight colors, the SNAPConnect Hospital Grade Decorator LED Indicator Receptacle is made of abuse-resistant nylon for installation in extra-heavy-use applications. A deep nylon body ensures strong performance, while a nylon base with eight tabs locks the device together for long-term durability. Solid brass contacts make sure there's an uninterrupted flow of power. These SNAPConnect Decorator receptacles are offered in straight or right-angled pigtailed terminal options, as well as in Hospital Grade or Hospital Grade/ tamper-resistant options. The duplex receptacle also features a power-indicating LED.



**SNAPConnect® Extra Heavy Duty Hospital Grade Style Line® Decorator Standard and TR Duplex Receptacles with Power Indicating LED**

Color	Hospital Grade		Hospital Grade / Tamper-Resistant	
	15A 125V	20A 125V	15A 125V	20A 125V
Ivory	SNAP2172IL	SNAP2182IL	SNAP2172ILTRA	SNAP2182ILTRA
Red	SNAP2172RL	SNAP2182RL	SNAP2172RLTRA	SNAP2182RLTRA
White	SNAP2172WL	SNAP2182WL	SNAP2172WLTRA	SNAP2182WLTRA

**Right Angle Pigtailed Terminal**

Description	Standard	Assembled in USA
Right Angle, clear terminal with 6-inch leads solid wire.	SNAP1RA	SNAP1RNA
Right Angle, clear terminal with 6-inch leads stranded wire.	SNAP2RA	SNAP2RNA

Many of these products are Assembled in USA, as indicated, and many are Buy American Compliant. Please contact Hubbell with any certification requirements.

**UL2930 Healthcare Facility Outlet Assemblies**

Hubbell Wiring Device-Kellems is the first manufacturer to bring the healthcare industry a UL 2930 Health Care Facility Outlet Assembly (HCOA). UL 2930 HCOAs are intended for use in patient care areas of hospitals, medical offices and urgent care centers. With safety in mind, Hubbell's patented Tamper-Resistant Hospital Grade Receptacles are additionally protected by tamper-resistant flip covers that restrict access to the receptacle without the right tool or key. This safety feature prevents unauthorized use of the HCOA plug strip, into which sensitive electronics may be plugged. Hubbell's HCOA products are constructed with a heavy duty metal housing allowing the HCOA to stand up to rigorous medical use.



**UL2930 Health Care Outlet Assembly (HCOA)**

Description	# of Outlets	Cord Length	Color	15 Amp	20 Amp
UL 2930 HCOA	6	6 ft.	White	HBL6MG6	HBL6MG620
with L-N Surge Protection	6	15 ft.	White	HBL6MG15	HBL6MG1520
UL 2930 HCOA	6	6 ft.	White	HBL6MGRPT6	HBL6MGRPT620
Relocatable Power Tap (RPT)	6	15 ft.	White	HBL6MGRPT15	HBL6MGRPT1520

**Hospital Grade Illuminated Receptacles**

Hubbell's Hospital Grade Illuminated Receptacles have a deep body design that makes them extremely resistant to impact, chemicals, and disinfectants, as well as to abrupt plug removal and insertion. A nickel-plated bypass power contact design promises uninterrupted power, and a four point grounding system provides redundant grounding for low resistance to fault currents in high-abuse areas. Available in four colors, these duplex receptacles also feature an illuminated face. A square head, 10-thread bronze center rivet won't rotate, which reduces stripping and resists corrosion. The receptacle's back wired ground terminal makes installation fast and easy; external bundling terminals contain wire strands and are intended for quick inspection.



**Hospital Grade Illuminated Receptacles**

Rating	Color	Catalog Number
15A 125V	Ivory	HBL8200ILI
	Red	HBL8200ILR
	White	HBL8200ILW
	Gray	HBL8200ILGY
20A 125V	Ivory	HBL8300ILI
	Red	HBL8300ILR
	White	HBL8300ILW
	Gray	HBL8300ILGY

Stainless Steel Wallplates

Hubbell's smooth, stainless steel wall plates are ideal for damp and corrosive environments. These non-magnetic plates are ideal for static-free environments, and their satin finish offers excellent cleanability while hiding fingerprint marks. Available in pre-marked and jumbo sizes, each plate includes matching stainless steel crews and is shipped with a special protective film to protect the plate during installation. They also offer impact resistance and improved aesthetics over other faceplates on the market.



Stainless Steel Wallplates

Plate Type	Stainless Steel	1-Gang	2-Gang	3-Gang	4-Gang
Toggle Switch	S/S 302/304	SS1	SS2	SS3	SS4
	S/S 430	SS1L	SS2L	SS3L	SS4L
Duplex Receptacle	S/S 302/304	SS8	SS82	SS83	SS84
	S/S 430	SS8L	SS82L	—	—
Style Line® Decorator	S/S 302/304	SS26	SS262	SS263	SS264
	S/S 430	SS26L	SS262L	—	—
Blank	S/S 302/304	SS13	SS23	SS33	SS43
	S/S 430	SS13L	SS23L	—	—
Pre-Marked EMERGENCY	S/S 302/304	SS8MEV	SS82MEV	—	—

USB Charger Receptacles

Hubbell's USB Charger Receptacle provides both USB and electrical power in a standard single gang electrical opening. Designed to provide more charging options for personal electronics, the USB ports are capable of charging two tablets simultaneously. The tamper-resistant Style Line® decorator outlets provide additional power for appliance use. Ideal for use in offices, medical labs, patient rooms, classrooms, etc.



USB Charger, Tamper-Resistant Duplex Receptacle

Description	Color	15A 125V AC	20A 125V AC
Two USB Type 2.0 Ports 5 Amp, 5 Volt DC,	Black	USB8200A5BK	USB8300ASBK
	Gray	USB8200ASGY	USB8300ASGY
15 or 20 Amp, 125 Volt AC Decorator Duplex	Ivory	USB8200ASI	USB8300ASI
	Light Almond	USB8200ASLA	USB8300ASLA
	White	USB8200ASW	USB8300ASW

USB Charger, 4 Port Outlet

Description	15A 125V AC
Four USB Type 2.0 Ports 5 Amp, 5 Volt DC, Style Line® Decorator	USB15X2BK
	USB15X2GY
	USB15X2I
	USB15X2LA
	USB15X2W

Insulgrip® Hospital Grade Valise® Plugs and Connectors

Hubbell Hospital Grade Insulgrip plugs and connectors are the industry standard for 15 and 20 Amp applications in any medical setting.

Available with a black, white or transparent housing, Insulgrip devices ensure high impact, heat and chemical resistance. Hubbell designed Insulgrip plugs and connectors with a molded face to keep out dust and debris and a powerful cord gripping design for superior strain relief. Whether connecting mobile ultrasound equipment or patient monitoring devices, Hospital Grade Insulgrip devices provide better safety and reliability.

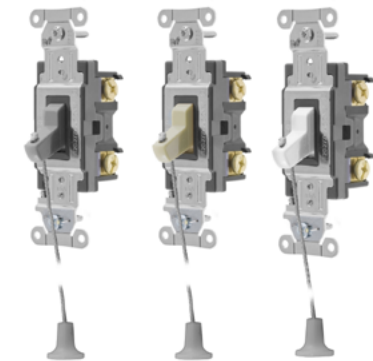


Hospital Grade Valise® Plugs and Connectors

Amps	NEMA Rating	Poles/Wires	Color	Plug	Connector
15A 125V	5-15	2-Pole 3-Wire	White	HBL8115V	HBL8119V
20A 125V	5-20	2-Pole 3-Wire	White	HBL8364V	—
15A 250V	6-15	2-Pole 3-Wire	White	HBL8666V	—
20A 250V	6-20	2-Pole 3-Wire	White	HBL8464V	HBL8469V

Hubbell-PRO Hospital Call Switch with Lanyard

Hubbell's Hubbell-PRO Hospital Call Switches offer a heavy-duty nylon toggle and are available in 20A single-pole configuration. These switches are appropriate for healthcare applications that need the extra security in case of an emergency. The toggle switches are available in three colors and feature back and side wire entrance points that accept two wires for feed-through capability.



Hubbell-PRO Hospital Call Switch, with Lanyard

Description	Rating	Toggle Color	Single Pole
Toggle, back and side wired	20Am 120/277V AC	Gray	HBL1221GHCS
		Ivory	HBL1221IHCS
		White	HBL1221WHCS

## Combination Wireless Wall Mount Charger & USB Outlet

Hubbell's Qi certified wireless chargers deliver a new convenience: you no longer have to deal with cords or poor connections while charging your devices. Designed to be aesthetically pleasing and durable, this device will organize your workplace or home, seamlessly transforming any ordinary space or counter into an organized, accessible "drop zone" to charge multiple devices at once.



### Charger/Outlet Features:

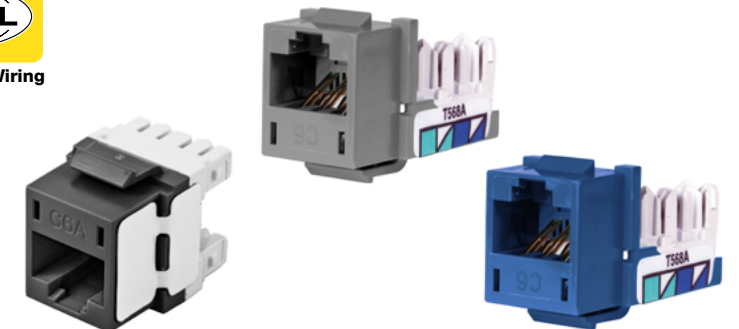
- Qi certified
- Easy single gang installation
- Two inductive coils for optimum target area
- 7.5W capacity wireless output
- LED indication: green for power, blue when charging
- cULus listed and FCC listed

### Applications:

- Patient rooms
- Nurses' stations
- Offices
- Airports
- Education
- Homes
- Restaurants

## Data Jacks

Hubbell's category-rated modular Jacks deliver cutting-edge performance for today's IP-based voice, data, audio and video applications. From the latest Ethernet protocols like 10 Gig, to Power over Ethernet, VoIP and video, there's no application that Hubbell jacks can't handle. With the QuickLace termination process and 1-Punch tool, these jacks also deliver the fastest termination in the industry. Available in Category 6A, Category 6 and Category 5e performance, Hubbell data jacks easily install in a wide range of Hubbell plates, frames and surface mount boxes alongside modular AV connectors.



### Data Jacks

Color	Category 6A	Category 6	Category 5e	Color	Category 6A	Category 6	Category 5e
Black	HJ6ABK	HXJ6BK	HXJ5EBK	Office White	HJ6AOW	HXJ6OW	HXJ5EOW
Blue	HJ6AB	HXJ6B	HXJ5EB	Orange	HJ6AOR	HXJ6OR	HXJ5EOR
Electric Ivory	HJ6AEI	HXJ6EI	HXJ5EEI	Purple	HJ6AP25	HXJ6P25	HXJ5EP25
Gold	HJ6AGL25	HXJ6GL25	HXJ5EGL25	Red	HJ6AR	HXJ6R	HXJ5ER
Gray	HJ6AGY	HXJ6GY	HXJ5EGY	White	HJ6AW	HXJ6W	HXJ5EW
Green	HJ6AGN	HXJ6GN	HXJ5EGN	Yellow	HJ6AY	HXJ6Y	HXJ5EY

Note: Gold and Purple available as 25-pack only

## HUBBCOM™ IP Devices

HUBBCOM™ IP Devices has a multi-functional design that will provide solutions for all your communication needs. It provides the ability to combine web application control, VoIP SIP telephone operation, overhead speaker broadcasts, and point-to-point server-less IP communication (audio and/or video).



### HUBBCOM IP Device Features:

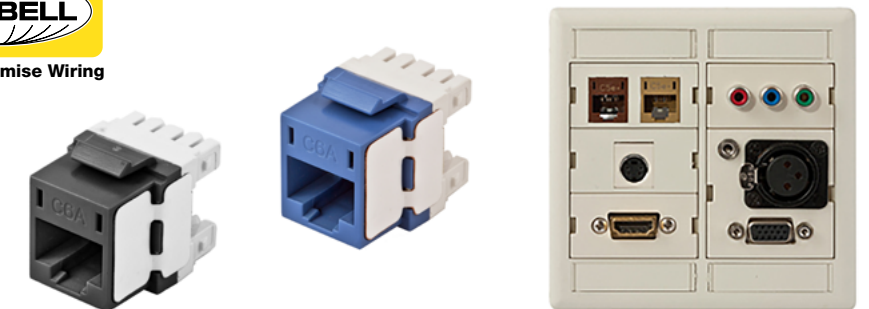
- Point-to-point, serverless audio & video
- Overhead paging with intercom (soft zoning, multiple conference calls, serverless)
- SIP telephone option
- Access control option
- Web portal access (applications)
- 7-inch capacitive touchscreen
- Desktop or wall-mount with handset
- Intuitive operation
- 8 Ohm, 8W speaker output

### Applications:

- Common areas and public spaces
- Patient rooms
- Nurses' stations
- Offices and meeting spaces
- Data centers

## iSTATION Front-Loading Plates and Modules

For use at the work area, Hubbell iSTATION Front-Loading Plates are designed to flush mount with a box eliminator and adjustable leveling feature, ensuring a clean attractive appearance for any environment. Available from one to six ports and in single-gang version or higher port counts in 2-, 3- and 4-gang versions, iSTATION Front-Loading Plates fit all Hubbell keystone connections, including data, fiber, and AV connectors. With iSTATION Front-Loading Plates, it's easy to create a customized work area with connections for virtually any low-voltage application.



### Hubbell iSTATION Modular Face Plate Frames

Color	1-Gang	2-Gang
Black	IMF1BK	IMF2BK
Electric Ivory	IMF1EI	IMF2EI
Gray	IMF1GY	IMF2GY
Office White	IMF1OW	IMF2OW
White	IMF1W	IMF2W

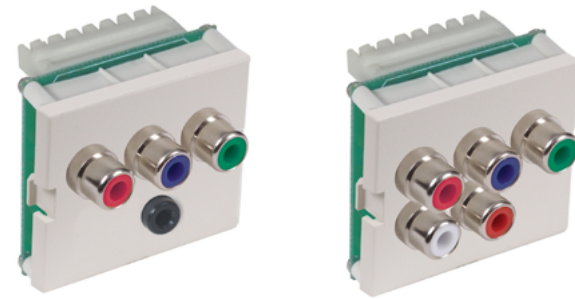
### NEXTSPEED Ascent Category 6A Jacks

Color	Single Pack	25-Pack
Black	HJ6ABK	HJ6ABK25
Blue	HJ6AB	HJ6AB25
Office White	HJ6AOW	HJ6AOW25
Orange	HJ6AOR	HJ6AOR25
White	HJ6AW	HJ6AW25



## 110 RCA Component Video Modules

Hubbell's iSTATION 110 Component RCA Video Modules deliver high-quality, high definition video signals to workstations and any transmitting devices. The modules are available in seven standard colors, and use UTP cable to deliver component video signals within a horizontal point-to-point run. For ease of installation, the modules require no soldering, offer quick and easy 110 termination, and are set up with a simple snap. The video modules can be used with Hubbell's extensive line of AV connectors, modules, and jacks to create one-of-a-kind multimedia spaces in healthcare environments.



### 110 Audio Video Modules, 1.5 Unit (75 foot max, Category 3, 5, 5e, 6, 6A UTP)

Color	RCA component Video1 UR Audio, 110 Termination	RCA component Video1 3.5mm Audio, 110 Termination
Office White	IMCAR11015OW	IMC3511015OW
White	IMCAR11015W	IMC3511015W

### 110 Audio Video Modules, 1 Unit (Category 3, 5, 5e, 6A UTP)

Color	RCA component Video to 110 Termination, 75 ft. max. High Definition
Office White	IMCR1101OW
White	IMCR1101W

## Recessed AV In-Wall Enclosure (FPTV)

Hubbell's netSELECT Rat Panel Television (FPTV) Connection Enclosure delivers high-density AV, data and power for today's flat-panel monitors and interactive whiteboards to sit flush against the wall. Available in a white powder coat finish that blends into the wall, the FPTV Enclosure is constructed of rugged 18-gauge cold rolled steel. It features mounting locations for deploying a variety of AV connectors and accommodating large bend radiuses associated with current cable types like HDMI, DVI, RG6/UQ and VGA.



### Recessed AV In-Wall Enclosure (FPTV)

FPTV Connection Enclosure	Catalog Number	Unloaded 1-Gang Plates and Frames	Catalog Number
2-gang in-wall enclosure, White	NSAV62M	iSTATION plate, White	IMF1W
Steel cover for NSAV6 series, White	NSAV6C	4-port keystone plate, White	NSP14W

Power Kit	Catalog Number
Surge protected power kit, Blue	NSOKPS



# Patient Rooms (Rough-In)



## HUBBELL LED 120 Watt High Bay Temporary / Industrial Light

Temporary LED lighting for a durable light source that saves energy, provides instant illumination and are rated to last 50,000 hours.



### 120 Watt Light Features:

- Easy, portable LED light fixture
- 120% LED efficiency
- Wire cage and polycarbonate lens design for durability
- 50,000 hours
- 5-15P plug type

### Applications:

- Construction site lighting

# Wiring Devices

## HUBBELL Spider® Temporary Power Box

Temporary and portable power box, Spider® box, complete unit, straight blade style.

- (7) 20a 125V receptacles
- (1) 30a 125/250V inlet and outlet



### Spider® Features:

- Heavy duty and portable
- Individual GFCI modules
- NEMA 3R metallic enclosure and heavy duty, abuse-resistant legs
- Standard stab termination circuit breakers with gasketed lift cover
- Yellow

### Applications:

- Construction site power
- Temporary power source

## Compression Tap Connectors

Burndy® Compression Tap Connectors are used for routing power or voltage drop applications.

Color code system matches installation die color coding. Electro-tin plated for added corrosion resistance. Clear cover is used to allow for visual inspection after installation. Accommodates: range taking allows for greater wire range with a single connector. Some designs accommodate more than 1 tap connection. Can be used for voltage drop applications.



### Compression Tap Connector Features:

- Copper wire connector
- Accommodates Copper Code Class B (Concentric, Compressed, Compact) or Class C wire and copper flex. See product details for specific wire classes.
- Electro-tin Plated for added corrosion resistance.
- Color coded markings
- Comes with clear cover
- UL Listed \*with Burndy Engineered System
- CSA Certified to C22.2

### Applications:

- Common areas and public spaces
- Corridor and stairwells
- Patient rooms
- Nurses' stations
- Surgical suites
- Clinical laboratories
- Office and meeting space
- Data center

## Compression Terminal Connectors

Burndy® Compression Terminal Connectors are used for terminating power.

Inspection window allows for full wire insertion inspection. Two hold mounting pad provides extra fastening strength. Long barrel with additional crimps allows for stronger mechanical connection strength. Color code system matches installation die color coding. Barrel ink bands identify the crimp zone and approximate crimp locations. Electro-Tin plated for added corrosion resistance.



### Compression Terminal Connector Features:

- Copper wire connectors
- Two hole mounting pad
- Long barrel
- Electro-tin plated
- Color coded ink bands
- Clear markings on pad and barrel
- Accommodates Copper Code Class B (Concentric, Compressed, Compact) or Class C wire and copper flex. See product details for specific wire classes.

### Applications:

- Common areas and public spaces
- Corridor and stairwells
- Patient rooms
- Nurses' stations
- Surgical suites
- Clinical laboratories
- Offices and meeting spaces
- Data centers

## PAT644LI Battery Actuated Crimping Tool

Burndy® PATRIOT battery actuated crimping tool—Hydraulic self contained with 11 ton output force, 6 awg-1000 kcmil copper, 6 awg-750 kcmil aluminum, dieless, 18V lithium ion.

Overmolded handle for comfort and improved grip, which allows for one-handed operation for advance, retract and hold. 18V lithium-ion batteries provide 2.5 times more charge/discharge cycles than traditional ni-cad batteries and provide 430 percentage more lifetime work. 5-year limited warranty on tool, 3-year on batteries and 1-year warranty on the charger.



### PAT644LI Features:

- Dieless system eliminates the need to purchase and maintain dies
- Dieless system allows connectors and splices to become range taking
- 355° head rotation
- Ergonomically balanced

### Applications:

- Common areas and public spaces
- Corridor and stairwells
- Patient rooms
- Nurses' stations
- Surgical suites
- Clinical laboratories
- Office and meeting space
- Data center

## PAT750LI Battery Actuated Crimping Tool

Burndy® PATRIOT 12-ton, c-head, hydraulic self-contained battery actuated crimping tool, 18v 3.0ah li-ion, 120V AC charger.

Refined hydraulic system for ultra performance, speed and reliability. Field proven electronics for ultimate reliability in the harshest environments. 5-year limited warranty, 3-year on batteries and charger, lifetime warranty on INFINITY DRIVE®.



### PAT750LI Features:

- True one-handed operation for advance, retract, and hold
- 12 ton output force
- State of the art crimping head design, 360° head rotation
- Ergonomically balanced tool design
- Durable high-impact formed carrying case
- 5-year limited warranty on tool
- 3-year warranty on battery and charger

### Applications:

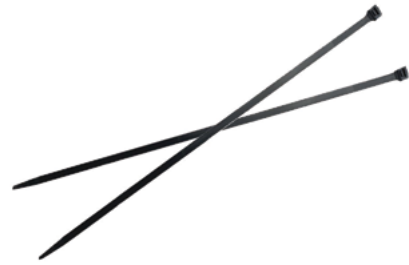
- Common areas and public spaces
- Corridor and stairwells
- Patient rooms
- Nurses' stations
- Surgical suites
- Clinical laboratories
- Office and meeting space
- Data center

CT Series Cable Ties



Burndy® UNIRAP™ cable ties are fabricated of one piece nylon with parts. The straps are tough, resilient, lightweight and abrasion resistant. They offer high tensile strength and are chemically resistive to solvents, alkalides, oils, grease and diluted acids. Self-locking, they secure without twisting or leaving sharp projections.

Organizes wires in all areas of buildings within the walls, ceilings, desk areas, sanitized areas and clean rooms.



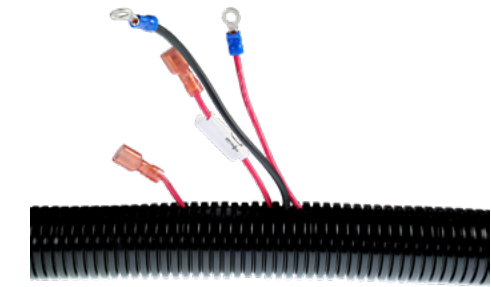
CT Series Cable Tie Features:	Applications:
<ul style="list-style-type: none"> <li>• Nylon 6/6 and nylon 12 cable ties</li> <li>• Styles include releasable, identification and screw mount</li> <li>• Bundle diameter range of .06" to 12"</li> <li>• Tensile strength from 18 lbs to 250 lbs.</li> </ul>	<ul style="list-style-type: none"> <li>• Office and meeting space</li> <li>• Parking exterior</li> </ul>

LOOM Split Tubing



Burndy® split loom is for applications where braided tubing or spiral wrap may be difficult to install. Tubing provides full coverage. In harsh applications, the tubing provides resistance to crushing, impact, and abrasion.

Tubing offers excellent protection against automotive fluids, vibration wear, water, snow, ice and the effects of heat, cold, and sunlight on cables and wires.



LOOM Split Tubing Features:	Applications:
<ul style="list-style-type: none"> <li>• Polyethylene tube construction</li> <li>• Protection against heat, cold, water, ice and vibration wear</li> <li>• Protection against crushing, impact and abrasion</li> </ul>	<ul style="list-style-type: none"> <li>• Nurses' stations</li> <li>• Data centers</li> <li>• Parking exterior</li> </ul>

CTSS-Series Cable Ties



Burndy® 304 Stainless Steel ties are designed to secure hoses, cables, poles, pipes, and more when harsh environmental conditions may adversely affect the bundling application. Used where corrosion, vibration, weathering, radiation, and temperature extremes are a concern. Burndy® Stainless Steel ties can be used in virtually any indoor, outdoor, and underground application.

These Stainless Steel ties are made from Grade 304 Stainless Steel. Designed with a low profile clamping bearing head with fully adjustable strap accommodating many bundle diameters.



CTSS-Series Cable Tie Features:	Applications:
<ul style="list-style-type: none"> <li>• 304 Grade Stainless Steel</li> <li>• Meet the requirements of ABS</li> <li>• Smooth, rounded edges help ensure safe, efficient handling</li> <li>• Self-locking steel ball design speeds installation and locks into place at any length</li> <li>• Provides a strong durable method of cable bundling</li> <li>• Flame retardant and non-toxic for applications where safety from fire is critical</li> </ul>	<ul style="list-style-type: none"> <li>• Offices and meeting spaces</li> <li>• Parking exterior</li> </ul>

Heat Shrink



Burndy® thin wall and heavy duty heat shrink used in indoor and outdoor applications. used to protect wires and connections for terminals, taps and splice connectors.

Protects cables and connections from different environments and moisture. Allows inspection of new construction of connection, termination or splice. Used in indoor and outdoor applications.



Heat Shrink Features:	Applications:
<ul style="list-style-type: none"> <li>• Cross linked polyolefin construction</li> <li>• Protects from environments and abrasion</li> <li>• Used in indoor and outdoor applications</li> <li>• Clear heat shrink provides inspection of electrical connection</li> <li>• Standard heat shrink for color coding</li> <li>• Forms a moisture-proof seal</li> </ul>	<ul style="list-style-type: none"> <li>• Common areas and public spaces</li> <li>• Corridor and stairwells</li> <li>• Nurses' stations</li> <li>• Offices and meeting spaces</li> <li>• Data centers</li> </ul>

## Wire Basket Tray

For superior protection and management of electrical power or data communications cabling, Hubbell's Wire Basket Tray is field adaptable and easily installed overhead, on walls or under floors using various brackets and supports. Hubbell Wire Basket Tray is made of 100% domestic recycled steel and features a T-weld edge that protects both the installer and the cable from sharp points and a flat-shaped profile that reduces stress points to prevent degrading cabling performance. Available in black, pewter, stainless steel type 304 and 316, pre-galvanized steel and electro-zinc plating, Hubbell Wire Basket Tray is extremely flexible and installs faster than conduit systems while offering increased capacity.



### Flat Style Wire Basket Trays

Width x Length Inches (mm)	2" (51mm) Round		6" (51mm) Round	
	Pre-Galvanized	Black	Pre-Galvanized	Black
4" (102) x 118" (3000)	HBT0204S	HBT0204SBK	-	-
6" (152) x 118" (3000)	HBT0206S	HBT0206SBK	-	-
8" (203) x 118" (3000)	HBT0208S	HBT0208SBK	HBT0608S	HBT0608SBK
12" (305) x 118" (3000)	HBT0212S	HBT0212SBK	HBT0612S	HBT0612SBK
16" (406) x 118" (3000)	HBT0216S	HBT0216SBK	HBT0616S	HBT0616SBK
18" (457) x 118" (3000)	HBT0218S	HBT0218SBK	HBT0618S	HBT0618SBK
20" (508) x 118" (3000)	HBT0220S	HBT0220SBK	HBT0620S	HBT0620SBK

# Rough-In

## Recessed AV In-Wall Enclosure (FPTV)

Hubbell's netSELECT Rat Panel Television (FPTV) Connection Enclosure delivers high-density AV, data and power for today's flat-panel monitors and interactive whiteboards to sit flush against the wall. Available in a white powder coat finish that blends into the wall, the FPTV Enclosure is constructed of rugged 18-gauge cold rolled steel. It features mounting locations for deploying a variety of AV connectors and accommodating large bend radiuses associated with current cable types like HDMI, DVI, RG6/UQ and VGA.



### Recessed AV In-Wall Enclosure (FPTV)

FPTV Connection Enclosure	Catalog Number	Unloaded 1-Gang Plates and Frames	Catalog Number
2-gang in-wall enclosure, White	NSAV62M	1STATION plate, White	IMF1W
Steel cover for NSAV6 series, White	NSAV6C	4-port keystone plate, White	NSP14W

Power Kit	Catalog Number
Surge protected power kit, Blue	NSOKPS

## Hubbell SystemOne Furniture Feed Poke-Throughs

Hubbell's innovative SystemOne Delivery System includes flush furniture feed fire-rated poke through devices that are ideal for delivering power and data to furniture systems in today's computer lab settings. Able to feed up to a 2-inch conduit and accommodate up to 36 Category 5e network cables, the SystemOne Furniture Feed Poke-Through delivers whatever combination of power, data and audio/video connections are required for educational facilities to keep pace with technology.



### SystemOne Furniture Feed Poke-Throughs

Description	Color	Catalog Number without Junction Box	Catalog Number with Junction Box*
One-Piece Furniture Feed Poke-Through Assembled-unit includes: • Hubbell SystemOne AV floor fitting (S1PTAVFIT) • Hubbell SystemOne Furniture Feed Cover Plate (S1SPFFxx) • 4-hour fire classification	Aluminum Finish	S1PTFFAL	S1PTFFALJ
	Brass Finish	S1PTFFBRS	S1PTFFBRSJ
	Black	S1PTFFBL	S1PTFFBLJ
This solution provides one 3/4 in. conduit for power and one 1/2 in. conduit for low-voltage. Furnished with two screw-in flexible metal conduit connectors.	Gray	S1PTFFGY	S1PTFFGYJ

\*Junction box factory installed on through floor fitting

## Stab-iT® & Stab-iT® II Boxes

Stab-iT® and Stab-iT® II boxes with built-in cable connectors for flexible armored cable are field-proven 3X faster than using traditional connects. Simply remove the prout and insert cable. Our unique cable clamp locks cable in place quickly and easily. Saves money—these boxes cost no more than a standard box plus cable connector and bushing, yet speed up installation time! Increases productivity and reduces worksite waste.



### Stab-iT® & Stab-iT® II Box Features:

- Designed for quick installation of flex, MC, MCI, MCI-A, AC, and HCF Cable
- Great for pre-fab
- Original Stab-iT® line includes 4" square boxes and switch boxes
- Stab-iT® II line includes 4-11/16" square boxes
- UL Listed for use without a plastic bushing (except for AC Cable)
- Pre-installed 8" solid #12 pigtail
- Suitable for use without a bonding jumper in circuits up to 600 volts

### Applications:

- Common areas and public spaces
- Corridors and stairwells
- Patient rooms
- Nurses' stations
- Clinical laboratories
- Offices and meeting spaces
- Data centers

### Adjustable Mud Rings

Get a flush finish every time! RACO Adjustable Mud Rings provide job site flexibility when finished wall depths are unknown. Inner ring can be adjusted after drywall is installed to match the depth, saving time for the electrical installer.



#### Adjustable Mud Ring Features:

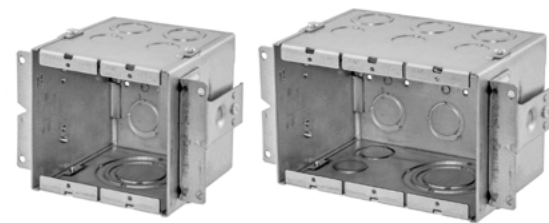
- Adjustable from 1/2 in. to 1-3/8 in.
- Depth adjusted by 2 screws located on opposite sides
- Adjustment screws are clearly visible and accessible even after device is installed
- All screws are inside of ring eliminating damaged from router
- For use with 2-1/8 in. deep boxes
- cULus Listed

#### Applications:

- Common areas and public spaces
- Corridors and stairwells
- Patient rooms
- Nurses' stations
- Clinical laboratories
- Offices and meeting spaces
- Data centers
- Service areas

### Gangable Data/AV Boxes

RACO AV Wall Boxes provide an ideal solution for in-wall applications requiring data, AV and power. Perfect for Category 6 and 6A fiber optic cables that require a larger bend radius. Designed to install independently or ganged together to support multiple devices. Accommodates industry standard wallplates.



#### Gangable Data/AV Box Features:

- Knockouts from 1/2" up to 2"
- 4" depth accepts any device
- Raised ground provision in each gang
- Accepts low voltage partition
- NEMA spaced device mounting, accepts industry standard wallplates
- Adjustable stud mounting brackets built in to accommodate different stud and sheetrock thickness
- Adjustable far side support
- Suitable for masonry application

#### Applications:

- Common areas and public spaces
- Corridors and stairwells
- Patient rooms
- Nurses' stations
- Clinical laboratories
- Offices and meeting spaces
- Data centers

### Red Life Safety Adapter Ring

RACO Adapter ring reduces 4-11/16" square box to 4" square opening. Raised 5/8". Red color for Life Safety applications.



#### 911-16 Features:

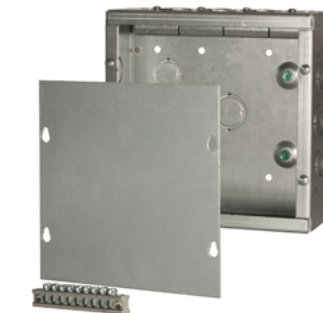
- Durable pregalvanized steel construction
- Painted red for life safety
- Key-hole allows for installation of cover without removing the box screws
- 5/8 in. raised

#### Applications:

- Common areas and public spaces
- Corridors and stairwells
- Patient rooms
- Nurses' stations
- Clinical laboratories
- Offices and meeting spaces
- Data centers
- Service areas

### Grand Slam Box

RACO's Grand Slam Box is the quickest and easiest way to terminate home runs and other electrical wiring. Specifically designed for commercial applications, the Grand Slam Box offer both the flexibility and space desired in a junction box. Features RACO's unique Stab-iT® clamps for MC built-in, the Grand Slam Box offers the most labor savings and flexibility of any home run box in the market.



#### Grand Slam Box Features:

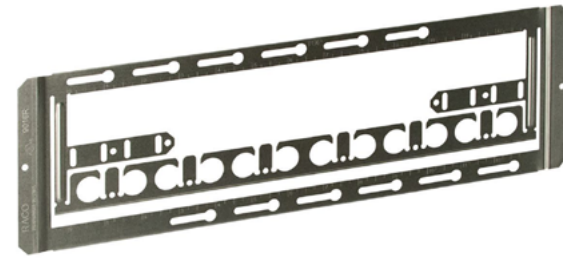
- Stab-iT® clamp has been tested at over 3X's faster than traditional MC connectors
- Designed and quick installation of flex, MC, MCI, MCI-A, HCF, AC and EMT
- Surface mount cover included
- Available in two sizes to meet job requirements
- Two raised ground for installation flexibility
- Concentric knockouts on side and back for easy access
- UL Listed

#### Applications:

- Common areas and public spaces
- Corridors and stairwells
- Nurses' stations
- Clinical laboratories
- Offices and meeting spaces
- Data centers

### RACO 9016R and 9024R Open Center Brackets with Built-in Cable Management

RACO's center brackets with built-in cable management easily position and adjust electrical boxes and plaster rings between studs. Features built-in "first means of support" for managing armored cable.



**9016R and 9024R Features:**

- Accepts both 4" and 4-11/16" square boxes
- Opening gives installer flexibility of box position between studs
- Features built-in first mean of support for securing and supporting MC cable
- 16" or 24" models

**Applications:**

- Common areas and public spaces
- Corridors and stairwells
- Patient rooms
- Nurses' stations
- Clinical laboratories
- Offices and meeting spaces
- Data centers

### RACO 260H Large Capacity Data/Power Box

RACO's large capacity boxes are used for audio, video, data and power applications providing ample space for Cat 6A and fiber optic cable bends.



**260H Features:**

- Welded steel construction with "H" bracket which allows for side-by-side mounting on stud and far side box support
- 4-11/16" square x 3-1/4" deep
- Accepts standard 4-11/16" covers
- TKO knockouts for flexibility
- Includes knockouts 1/2" in through 2"
- Three pre-installed ground screws
- Acceptable for use in 2-hour fire rated walls

**Applications:**

- Common areas and public spaces
- Corridors and stairwells
- Patient rooms
- Nurses' stations
- Clinical laboratories
- Offices and meeting spaces
- Data centers

### RACO 9020R Adjustable Open Center Bracket

RACO's adjustable open center bracket can be adjusted for use on stud spacing anywhere from 16-24" and can be cut for smaller spaces. Rigid heavy-duty design eliminates need for far-side support. Provides maximum flexibility for installers while reducing required SKU's on the jobsite.



**9020R Features:**

- Accepts both 4" square and 4-11/16" square boxes
- Rigid design eliminates need for far-side support
- Center cutout for quick and level installation
- Can be cut for shorter spacing
- UL Listed

**Applications:**

- Common areas and public spaces
- Corridors and stairwells
- Patient rooms
- Nurses' stations
- Clinical laboratories
- Offices and meeting spaces
- Data centers

### SNAPConnect® Right Angle Pigtailed Connectors

SNAPConnect® pigtailed connectors assist institutional facilities get spaces up and running faster, and streamlines moves, adds and changes. Hubbell's SNAPConnect® switches and receptacles save significant termination time while providing a fast and consistent installation every time.



Wiring Device-Kellems



**Right Angle Pigtailed Connectors Features:**

- Fast, easy installation with SNAPConnect® modular terminal instead of pigtails
- Clear terminal housing with no exposed live part
- Compact size with a clean finished look
- Transparent housing to inspect contacts
- Audible SNAP, indicates solid connection
- Reduces installation time
- Fully insulated design

**Applications:**

- Healthcare
- Education
- Hospitality
- Commercial construction
- Pre-Fab assembly
- OEM

# Nurses' Stations



## LCAT

LCAT LED Contemporary Architectural Troffer provides both design and value with an architectural appearance, LED technology to reduce maintenance and a full family including 2'x4', 2'x2', 1'x4' and 1'x2' sizes. High efficiency acrylic center lens features linear prisms for superior performance without LED pixelation.

**Columbia**  
LIGHTING



### LCAT Features:

- High performance reflector with matte white paint standard
- Lightweight housing and electrical components fully accessible from below the ceiling for easy installation and maintenance
- 60,000 hour LEDs at L80 (up to 150,000 projected life) for reduced maintenance
- Surface and cable mount options available
- Controls compatible with NX Distributed Intelligence™ and SpectraSync™ Color Tuning Technology
- DLC® (DesignLights Consortium) Qualified, with some Premium Qualified configurations

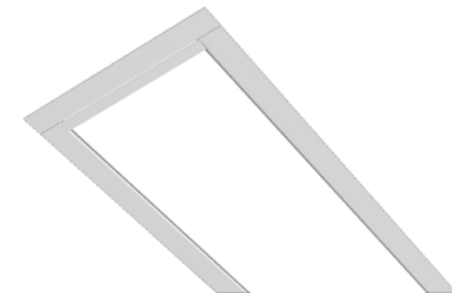
### Applications:

- Conference rooms
- Common areas
- Public spaces
- Offices
- Hallways

## MOD™ x 4L LED Recessed Slot

The MOD™ 4L LED Recessed Slot (4L-R-D) is part of the MODx family, which is an affordably-priced, full-featured offering with best-in-class attention to detail.

**LITECONTROL**  
making light work™



### MOD™ x Family Features:

- End cap design eliminates visible diffuser seams/gaps
- 2 SDCM color variation
- Available on Litespeed 10-Day Quick Ship program in select configurations
- SpectraSync™ Color Tuning Technology available
- NX Distributed Intelligence™ wired and wireless controls capability available
- PowerHUBB™ PoE Lighting and Control options available

### Applications:

- Commercial indoor
- Education
- Healthcare
- Institutional
- Library
- Office
- Public spaces
- Retail



LITEISTRY™ Family

The LITEISTRY™ family offers a broad palette of architectural downlighting solutions with consistent aperture appearance, quiet ceiling design, and optical performance. Create spaces with the confidence that LITEISTRY™ will complement your vision to transform every architectural space into a masterpiece.



LITEISTRY™

LITEISTRY™ Family Features:

- Available in downlight, adjustable, wall wash and cylinder solutions
- Delivers a unified family appearance across 3 aperture sizes and 2 shapes
- 50° visual cutoff to source and source image to maintain the focus on the space - not the ceiling
- Available in a variety of beam distributions, dimming protocols, and housing configurations
- SpectraSync™ Color Tuning Technology and PowerHUBB™ PoE Lighting and Control options available

Applications:

- Offices
- Lobbies
- Conference rooms
- Hallways
- Public spaces
- Waiting room
- Dining areas

USB Charger Receptacles

Hubbell's USB Charger Receptacle provides both USB and electrical power in a standard single gang electrical opening. Designed to provide more charging options for personal electronics, the USB ports are capable of charging two tablets simultaneously. The tamper-resistant Style Line® decorator outlets provide additional power for appliance use. Ideal for use in offices, medical labs, patient rooms, classrooms, etc.



USB Charger, Tamper-Resistant Duplex Receptacle

Description	Color	15A 125V AC	20A 125V AC
Two USB Type 2.0 Ports	Black	USB8200A5BK	USB8300ASBK
5 Amp, 5 Volt DC,	Gray	USB8200ASGY	USB8300ASGY
15 or 20 Amp, 125 Volt AC Decorator Duplex	Ivory	USB8200ASI	USB8300ASI
	Light Almond	USB8200ASLA	USB8300ASLA
	White	USB8200ASW	USB8300ASW

USB Charger, 4 Port Outlet

Description	15A 125V AC
Four USB Type 2.0 Ports	USB15X2BK
5 Amp, 5 Volt DC, Style Line® Decorator	USB15X2GY
	USB15X2I
	USB15X2LA
	USB15X2W

NX Distributed Intelligence™

Hubbell Control Solutions' NX Distributed Intelligence platform delivers a seamless lighting control solution. NX is capable of scaling from standalone fixture and room control applications to networked enterprise deployments. NX operates using wired, wireless and hybrid connectivity with native BACnet® support.

NX portfolio of compatible products provides the flexibility to easily scale from a single fixture to a complete building using a broad selection of multi-tiered control strategies.



NX Distributed Intelligence Features:

- Multiple deployment options: wired, wireless and hybrid
- For indoor and outdoor applications
- Native BACnet support
- Supports Hubbell Lighting's SpectraSync™ Color Tuning Technology
- Ease of implementation with self-configuration feature and mobile app tool

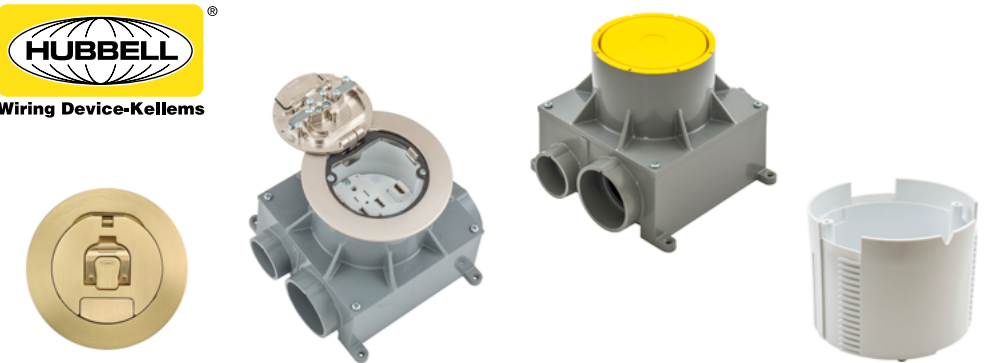
Applications:

- General indoor and outdoor

Hubbell SystemOne Fully Adjustable 4-Inch Recessed Floor Box

The Hubbell SystemOne Fully Adjustable Recessed floor box is the next step in a long line of quality products delivering power, data and AV for any application. The challenge of a recessed adjustable floor box is the device depth would vary for different floor thicknesses. We have solved this issue with the integral, patent pending mounting cup which adjusts the device mounting depth to 3 inches, no matter the floor thickness.

The Adjustable Mounting Cup (AMC) is the unique feature of the CFBS1R4 Floor Box product line, and must be purchased separately from the floor boxes. With teeth spaced in 5/32 inch increments, the adjustable cup allows for installation ease and flexibility. The AMC is dropped into the floor box collar then rotated clockwise to set the height and is adjustable until the ground plate is installed. Once the ground plate is installed, the cup is locked into place preventing unwanted adjustment of height. Lastly, the device mounting plate and electrical devices are installed.

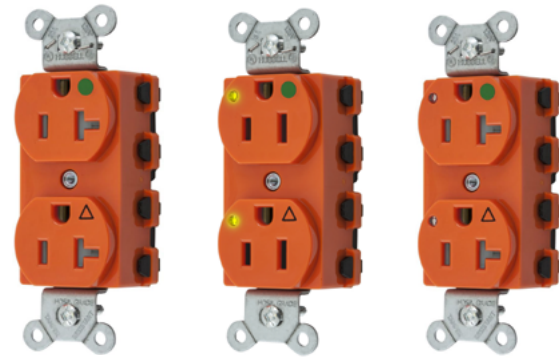


Hubbell SystemOne Fully Adjustable 4-Inch Recessed Floor Box

Boxes	Catalog No.	Device Mounting Plates
PVC Floor Box	CFBS1R4PFB	2x2 sub-plate with one decorator device opening and two keystone jack openings <b>S1R4SP2X2STYLE</b>
Cast Iron Floor Box	CFBS1R4CFB	
Adjustable Mounting Cup (includes white cup, gray low voltage dividers and ground plate)	CFBS1R4CUP	2x2 sub-plate with one duplex device opening and two keystone jack openings <b>S1R4SP2X2DUPLEX</b>
Architectural Cover Finishes		
Brushed Aluminum finish, <b>CFBS1R4CVRALU</b>	Plated Antique Bronze finish, <b>CFBS1R4CVRBRZ</b>	
Plated Brushed Brass finish, <b>CFBS1R4CVRBRS</b>	Plated Satin Nickel finish, <b>CFBS1R4CVRNKL</b>	Four single 20A receptacles; can be wired as single or two circuit with isolated ground capability, 24 inch wire leads <b>S1R4SPQUAD</b>

### SNAPConnect® Hospital Grade Isolated Ground Receptacles

Hubbell's SNAPConnect devices offer superior installation efficiency while delivering safe, reliable connections. Instead of traditional pigtails, the device's modular connector is installed during rough-in. Once the walls are up, the protective covering is removed and the connector is simply snapped into the SNAPConnect device for a consistent connection every time. Once installed, SNAPConnect's modular design enables simple device change-out by maintenance personnel. SNAPConnect devices are also a snap to test with standard testers.



#### SNAPConnect® Hospital Grade Isolated Ground Receptacles

			15A 125V	20A 125V
Tamper-resistant		Orange	SNAP8200IGTRA	SNAP8300IGTRA
		Red	SNAP8200RIGTRA	SNAP8300RIGTRA
With power indicating LED		Orange	SNAP8200IGL	SNAP8300IGL
		Red	SNAP8200RIGL	SNAP8300RIGL
Tamper-resistant with power indicating LED		Orange	SNAP8200IGLTRA	SNAP8300IGLTRA
		Red	SNAP8200RIGLTRA	SNAP8300RIGLTRA

#### Right Angle Pigtailed Terminal

Description	Standard
Right Angle, clear terminal with 6-inch leads solid wire.	SNAP1RA
Right Angle, clear terminal with 6-inch leads stranded wire.	SNAP2RA

### Hospital Grade Surge Protection Receptacles

Hubbell Surge Protection Receptacles provide safe, reliable power in areas where equipment could be damaged from sudden surges of power.

These receptacles fit in standard wall boxes and have a power-on indicator light that verifies that power is available and the suppression circuit is fully functional. When the surge protection is no longer functioning, a damage alert alarm sounds and continues sounding until the receptacle is replaced or the muting screw is utilized.



#### Circuit Guard® Hospital Grade Duplex Receptacles

Description	Color	15A 125V	20A 125V
Surge suppression receptacles with light and alarm, 240 joules/15000A per mode	Blue	HBL8262SA	HBL8362SA
	Red	HBL8262RSA	HBL8362RSA
	White	HBL8262WSA	HBL8362WSA
Isolated ground, surge suppression receptacles with light and alarm, 240 joules/15000A per mode	Blue	IG8262SA	IG8362SA
	Red	IG8262RSA	IG8362RSA
	White	IG8262WSA	IG8362WSA
4-PLEX surge suppression receptacles with lights, 80 joules/6500A per mode	Blue	—	HBL420HS
	Red	—	HBL420HRS

### SNAPConnect® Hospital Grade Decorator LED Indicator Receptacles

Available in eight colors, the SNAPConnect Hospital Grade Decorator LED Indicator Receptacle is made of abuse-resistant nylon for installation in extra-heavy-use applications. A deep nylon body ensures strong performance, while a nylon base with eight tabs locks the device together for long-term durability. Solid brass contacts make sure there's an uninterrupted flow of power. These SNAPConnect Decorator receptacles are offered in straight or right-angled pigtailed terminal options, as well as in Hospital Grade or Hospital Grade/ tamper-resistant options. The duplex receptacle also features a power-indicating LED.



#### SNAPConnect® Extra Heavy Duty Hospital Grade Style Line® Decorator Standard and TR Duplex Receptacles with Power Indicating LED

Color	Hospital Grade		Hospital Grade / Tamper-Resistant	
	15A 125V	20A 125V	15A 125V	20A 125V
Ivory	SNAP2172IL	SNAP2182IL	SNAP2172ILTRA	SNAP2182ILTRA
Red	SNAP2172RL	SNAP2182RL	SNAP2172RLTRA	SNAP2182RLTRA
White	SNAP2172WL	SNAP2182WL	SNAP2172WLTRA	SNAP2182WLTRA

#### Right Angle Pigtailed Terminal

Description	Standard	Assembled in USA
Right Angle, clear terminal with 6-inch leads solid wire.	SNAP1RA	SNAP1RNA
Right Angle, clear terminal with 6-inch leads stranded wire.	SNAP2RA	SNAP2RNA

Many of these products are Assembled in USA, as indicated, and many are Buy American Compliant. Please contact Hubbell with any certification requirements.

### Combination Wireless Wall Mount Charger & USB Outlet

Hubbell's Qi certified wireless chargers deliver a new convenience: you no longer have to deal with cords or poor connections while charging your devices. Designed to be aesthetically pleasing and durable, this device will organize your workplace or home, seamlessly transforming any ordinary space or counter into a organized, accessible "drop zone" to charge multiple devices at once.



#### Charger/Outlet Features:

- Qi certified
- Easy single gang installation
- Two inductive coils for optimum target area
- 7.5W capacity wireless output
- LED indication: green for power, blue when charging
- cULus listed and FCC listed

#### Applications:

- Patient rooms
- Nurses' stations
- Offices
- Airports
- Education
- Homes
- Restaurants

HUBBCOM™ IP Devices

HUBBCOM™ IP Devices has a multi-functional design that will provide solutions for all your communication needs. It provides the ability to combine web application control, VoIP SIP telephone operation, overhead speaker broadcasts, and point-to-point server-less IP communication (audio and/or video).



HUBBCOM IP Device Features:

- Point-to-point, serverless audio & video
- Overhead paging with intercom (soft zoning, multiple conference calls, serverless)
- SIP telephone option
- Access control option
- Web portal access (applications)
- 7-inch capacitive touchscreen
- Desktop or wall-mount with handset
- Intuitive operation
- 8 Ohm, 8W speaker output

Applications:

- Common areas and public spaces
- Patient rooms
- Nurses' stations
- Offices and meeting spaces
- Data centers

Hubbell X-End AV Plug-n-Play System

Ideal for digital signage, smartboards, TVs, monitors and projector systems, the Hubbell X-End AV Plug-n-Play System features pre-terminated, made-to-length assemblies with a locking connector interface that saves valuable installation and testing time. Able to deliver up to 1080i component transmission for superior audio and video, X-End supports multiple applications and configurations. The patch cords and tails are easily swapped out as needs change without needing to change horizontal cabling runs.



AV Plug-n-Play X-End Horizontal Cable Runs, Male, Black

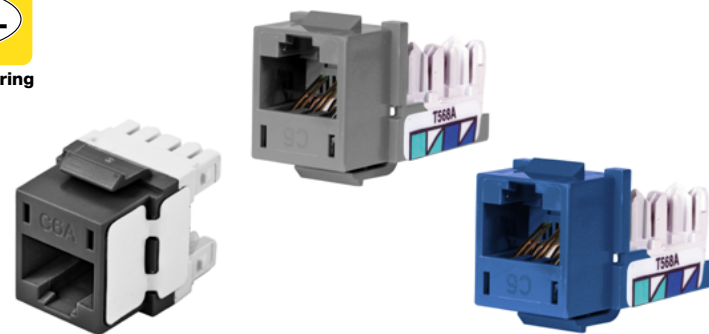
Description	35 ft.	50 ft.
Non-plenum, 8-pin	VGA650BK	HBL8362SA
Plenum, 8-pin	VGA6P50BK	HBL8362RSA
Non-plenum, 8-pin, with 3.5mm	VGA3650BK	HBL8362RSA
Plenum, 8-pin, with 3.5mm	VGA36P50BK	HBL8362WSA

VGA Plug-n-Play X-End Connections

Quantity	15-Pin (F) to 8-Pin (F)				15-Pin (M) to 8-Pin (M) 8 In. Tail
	Straight 180°	Angled 45°	Angled 90°	8 in. tail	Plenum
1-Pack	15S6P1	15A6P1	15N6P1	15T6P1	15MP6P1
10-Pack	15S6P10	15A6P10	15N6P10	15T6P10	15MP6P10

Data Jacks

Hubbell's category-rated modular Jacks deliver cutting-edge performance for today's IP-based voice, data, audio and video applications. From the latest Ethernet protocols like 10 Gig, to Power over Ethernet, VoIP and video, there's no application that Hubbell jacks can't handle. With the QuickLace termination process and 1-Punch tool, these jacks also deliver the fastest termination in the industry. Available in Category 6A, Category 6 and Category 5e performance, Hubbell data jacks easily install in a wide range of Hubbell plates, frames and surface mount boxes alongside modular AV connectors.



Data Jacks

Color	Category 6A	Category 6	Category 5e	Color	Category 6A	Category 6	Category 5e
Black	HJ6ABK	HXJ6BK	HXJ5EBK	Office White	HJ6AOW	HXJ6OW	HXJ5EOW
Blue	HJ6AB	HXJ6B	HXJ5EB	Orange	HJ6AOR	HXJ6OR	HXJ5EOR
Electric Ivory	HJ6AEI	HXJ6EI	HXJ5EEI	Purple	HJ6AP25	HXJ6P25	HXJ5EP25
Gold	HJ6AGL25	HXJ6GL25	HXJ5EGL25	Red	HJ6AR	HXJ6R	HXJ5ER
Gray	HJ6AGY	HXJ6GY	HXJ5EGY	White	HJ6AW	HXJ6W	HXJ5EW
Green	HJ6AGN	HXJ6GN	HXJ5EGN	Yellow	HJ6AY	HXJ6Y	HXJ5EY

Note: Gold and Purple available as 25-pack only

HBLALU4800 Series Two Channel Aluminum Raceway

Hubbell's HBLALU4800 Series aluminum raceway is a large two channel, two-piece aluminum raceway that is ideal for delivering power or data access. This extensive line of raceway includes a wide range of plates and covers, transition fittings, and boxes to accommodate the most demanding applications. The HBLALU4800 Series raceway mounts easily to wall or bench tops, and precut covers and plates provide quick installation while the Handi-Screw® boxes eliminate the need for long screws and enables faster mounting.



HBLALU4800 Series Two Channel Aluminum Raceway

Description	Color	Catalog No.	Description	Color	Catalog No.
<b>Two Channel Base</b> Satin anodized finish. Packed 40 ft. (12.19m) per carton, 10 ft. (3m) lengths	Anodized Aluminum	HBLALU4800B10 A: 2.10" (53.34) B: 6.00" (152.40)	<b>Cover</b> Satin anodized finish. Packed 40 ft. (12.19m) per carton, 5 ft. (1.5m) lengths	Anodized Aluminum	HBLALUC5 A: 3.00" (76.20)

Assembled cover and base dimensions:  
W: 6.00" (152.40)  
H: 2.25" (57.15)



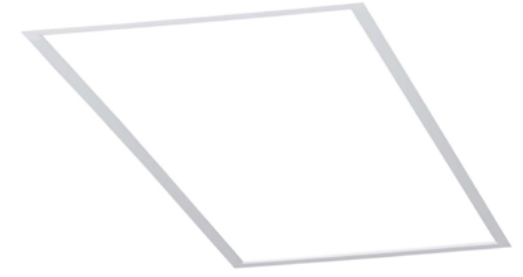
# Clinical Laboratories



## CFP

The CFP Edge-lit Flat Panel offers edge-lit LED technology in a sleek, modern, flat panel design. Light classrooms, offices, medical facilities, cleanrooms and general public spaces using edge-to-edge illumination, without pixelation or bright spots. Available in 1x4, 2x2 and 2x4 sizes.

**Columbia**  
LIGHTING



### CFP Features:

- Extruded aluminum frame with matte white finish and smooth frame-to-lens transition
- 60,000 hour LEDs at L70 (up to 180,000 projected life) for reduced maintenance
- Built to UL1598 standards and bear appropriate ETL labels
- Damp location label standard
- Tested in accordance with ISO14644-1; suitable for ISO Class 5-9 positive pressure cleanrooms
- Recessed, surface or cable mount options
- DLC® (DesignLights Consortium) Qualified, with some Premium Qualified configurations

### Applications:

- Commercial indoor
- Classrooms and offices
- Halls/dorms
- Conference rooms
- Meeting rooms
- Common areas

# Lighting Controls

## NX Distributed Intelligence™

Hubbell Control Solutions' NX Distributed Intelligence platform delivers a seamless lighting control solution. NX is capable of scaling from standalone fixture and room control applications to networked enterprise deployments. NX operates using wired, wireless and hybrid connectivity with native BACnet® support.

NX portfolio of compatible products provides the flexibility to easily scale from a single fixture to a complete building using a broad selection of multi-tiered control strategies.

**HUBBELL**®  
**HUBBELL**  
Control Solutions



### NX Distributed Intelligence Features:

- Multiple deployment options: wired, wireless and hybrid
- For indoor and outdoor applications
- Native BACnet support
- Supports Hubbell Lighting's SpectraSync™ Color Tuning Technology
- Ease of implementation with self-configuration feature and mobile app tool

### Applications:

- General indoor and outdoor

USB Charger Receptacles

Hubbell's USB Charger Receptacle provides both USB and electrical power in a standard single gang electrical opening. Designed to provide more charging options for personal electronics, the USB ports are capable of charging two tablets simultaneously. The tamper-resistant Style Line® decorator outlets provide additional power for appliance use. Ideal for use in offices, medical labs, patient rooms, classrooms, etc.



USB Charger, Tamper-Resistant Duplex Receptacle

Description	Color	15A 125V AC	20A 125V AC
Two USB Type 2.0 Ports 5 Amp, 5 Volt DC, 15 or 20 Amp, 125 Volt AC Decorator Duplex	Black	USB8200A5BK	USB8300ASBK
	Gray	USB8200ASGY	USB8300ASGY
	Ivory	USB8200ASI	USB8300ASI
	Light Almond	USB8200ASLA	USB8300ASLA
	White	USB8200ASW	USB8300ASW

USB Charger, 4 Port Outlet

Description	15A 125V AC
Four USB Type 2.0 Ports 5 Amp, 5 Volt DC, Style Line® Decorator	USB15X2BK
	USB15X2GY
	USB15X2I
	USB15X2LA
	USB15X2W

PolyTuff® Non-Metallic Liquidtight Conduit System

When it comes to managing and routing wires, Hubbell's PolyTuff Non-Metallic Liquidtight Conduit System gets the job done.

The system features flexible PVC conduit, a variety of liquidtight straight, SwivelLok and 90-degree fittings. PolyTuff system provides reliable seals. UL listed and CSA certified, PolyTuff's all non-metallic construction is ideal for ending metal fatigue and eliminating circuit separation problems. PolyTuff is extremely easy to install. The 100-foot lengths can be cut cleanly with a knife or PVC cutter without leaving jagged edges. They are also available in a variety of diameters from 3/8 inch to 2 inches.



PolyTuff® I Conduit

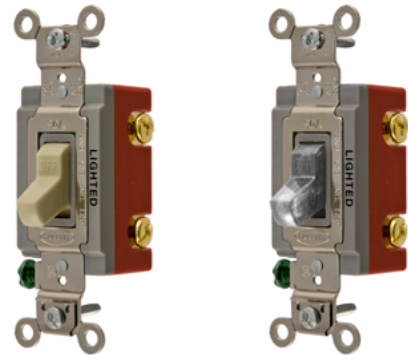
Trade Size (metric designator)	Color	Feet (m)	Catalog No.
1 (27)	Gray	100 (30.5)	G1100

Fittings

Trade Size (metric designator)	Color	Liquidtight Straight Male Non-Metallic	SwivelLok® Multi-Position with Male Non-Metallic Liquidtight Fitting	Fixed 90° Fittings for Non-Metallic Conduit
1 (25)	Gray	P100NGYA	PS1009NGY	P1009NGY

Illuminated Toggle Switches

Hubbell's Illuminated Toggle Switches are perfect for hospital environments due to their rugged construction and heavy-duty nylon toggle. The toggle not only resists abuse and damage from chemicals, but also illuminates when the switch is in the OFF position. Available in 15A or 20A, and in single-pole or three-way configurations, Illuminated Toggle Switches can be used in applications where lights need to be controlled from two points. Offered in ivory or clear, the switches also feature back and side wire entrance points that accept two wires for feed-through capability.



HBL Extra Heavy Duty Industrial Series Illuminated Toggle Switches, Light On with Load Off

Description	Toggle Color	Rating	15A 125V	20A 125V
Nylon toggle, back and side wired	Ivory	15A 120-277V AC	HBL1201IL	HBL1203IL
	Ivory		HBL1221IL	HBL1223IL
	Clear	20A 120-277V AC	HBL1221ILC	HBL1223ILC
	Red		HBL1221ILR	—

Stainless Steel Wallplates

Hubbell's smooth, stainless steel wall plates are ideal for damp and corrosive environments. These non-magnetic plates are ideal for static-free environments, and their satin finish offers excellent cleanability while hiding fingerprint marks. Available in pre-marked and jumbo sizes, each plate includes matching stainless steel crews and is shipped with a special protective film to protect the plate during installation. They also offer impact resistance and improved aesthetics over other faceplates on the market.



Stainless Steel Wallplates

Plate Type	Stainless Steel	1-Gang	2-Gang	3-Gang	4-Gang
Toggle Switch	S/S 302/304	SS1	SS2	SS3	SS4
	S/S 430	SS1L	SS2L	SS3L	SS4L
Duplex Receptacle	S/S 302/304	SS8	SS82	SS83	SS84
	S/S 430	SS8L	SS82L	—	—
Style Line® Decorator	S/S 302/304	SS26	SS262	SS263	SS264
	S/S 430	SS26L	SS262L	—	—
Blank	S/S 302/304	SS13	SS23	SS33	SS43
	S/S 430	SS13L	SS23L	—	—
Pre-Marked EMERGENCY	S/S 302/304	SS8MEV	SS82MEV	—	—

## Hospital Grade Surge Protection Receptacles

Hubbell Surge Protection Receptacles provide safe, reliable power in areas where equipment could be damaged from sudden surges of power.

These receptacles fit in standard wall boxes and have a power-on indicator light that verifies that power is available and the suppression circuit is fully functional. When the surge protection is no longer functioning, a damage alert alarm sounds and continues sounding until the receptacle is replaced or the muting screw is utilized.



### Circuit Guard® Hospital Grade • Duplex Receptacles

Description	Color	15A 125V	20A 125V
Surge suppression receptacles with light and alarm, 240 joules/15000A per mode	Blue	HBL8262SA	HBL8362SA
	Red	HBL8262RSA	HBL8362RSA
	White	HBL8262WSA	HBL8362WSA
Isolated ground, surge suppression receptacles with light and alarm, 240 joules/15000A per mode	Blue	IG8262SA	IG8362SA
	Red	IG8262RSA	IG8362RSA
	White	IG8262WSA	IG8362WSA
4-PLEX surge suppression receptacles with lights, 80 joules/6500A per mode	Blue	—	HBL420HS
	Red	—	HBL420HRS

## H-MOSS® Wireless Sensors and Controls

Hubbell's WL-Series Wireless Lighting Controls provide an easy way to save energy. Available in ceiling and wall sensors, these sensors use wireless communications to reduce wiring labor and materials and provide energy savings in retrofit applications or applications not conducive to running low-voltage wiring. They feature reliable Clear Connect wireless technology that operates in a restricted 434 MHz band, avoiding interference from other wireless devices. With a radio frequency (RF) range of 30 feet through walls and 60 feet for line-of-sight applications, Hubbell Wireless Occupancy Sensors feature enhanced digital signal processing to reliably separate signals from external noise and passive infrared technology for enhanced minor motion sensitivity.



### Wireless Occupancy Sensors

Description	Color	Catalog No.
Wall mount 180° - 3000 ft²	White	WLP3000W
Corner mount 90° - 2500 ft²	White	WLP2500W
Hallway mount - up to 150 linear ft	White	WLP150H
Ceiling mount 360° - 324-676 ft²	White	WLP450C

### Wireless Controls

Description	Color	Catalog No.
8A Lighting, 3A Fan (1/10 HP motor, 120V only), Spec Grade Electronic Switch 120-277V, NO NEUTRAL WIRE REQUIRED	Ivory	WLS1278I
	White	WLS1278W

## Clean Phone® VoIP Telephone (Wall-Mount), UL

The Clean Phone® VoIP telephone offers hands-free communications over an existing VoIP network for clean room or sterile environments. These telephones are intended for connection, via RJ45, to a 10/100 BaseT Ethernet and using either PoE or an external DC power source.

The Clean Phone® VoIP telephone features alarm reporting that permits monitoring the telephone's activity and address maintenance issues immediately.



### Clean Phone® Features:

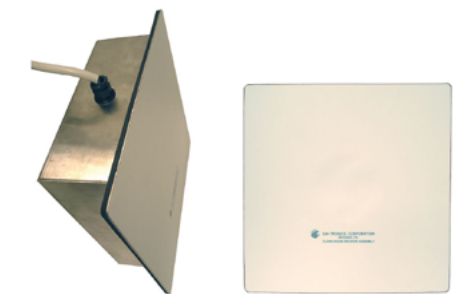
- Three auto-dial numbers allow quick communication at the touch of a button
- Completely smooth front panel is sealed with an overlay that keeps the phone particulate-free and makes cleaning quick and easy
- Oversized buttons with clearly marked functions permit operation for gloved hands
- Auto-answer feature
- Surface-mount model
- Automatic call divert (rollover), via memory list
- VoIP design, SIP compatible
- PoE or external 24-48V DC power

### Applications:

- Clinical laboratories
- Surgical suites

## Clean Room Speaker; 8-ohm impedance

The Clean Room Speaker is ideal for clean room environments. The speaker is designed to provide outstanding voice reproduction for use in public address and general alarm applications. The unit can be ceiling mounted or flush mounted into a wall. The completely smooth front panel is sealed with an overlay that allows for wash-downs while keeping the environment particulate-free.



### Clean Room Speaker Features:

- Ceiling or wall flush mountable
- Outstanding voice reproduction
- Completely smooth front panel is sealed with an overlay that keeps the environment particulate-free
- Available in 8 ohms
- Stainless steel back-box

### Applications:

- Clinical laboratories
- Surgical suites

# Cable & Wire Management

## HBLALU4800 Series Two Channel Aluminum Raceway

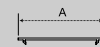
Hubbell's HBLALU4800 Series aluminum raceway is a large two channel, two-piece aluminum raceway that is ideal for delivering power or data access. This extensive line of raceway includes a wide range of plates and covers, transition fittings, and boxes to accommodate the most demanding applications. The HBLALU4800 Series raceway mounts easily to wall or bench tops, and pre-cut covers and plates provide quick installation while the Handi-Screw® boxes eliminate the need for long screws and enables faster mounting.



### HBLALU4800 Series Two Channel Aluminum Raceway

Description	Color	Catalog No.	Description	Color	Catalog No.
<b>Two Channel Base</b> Satin anodized finish. Packed 40 ft. (12.19m) per carton, 10 ft. (3m) lengths	Anodized Aluminum	<b>HBLALU4800B10</b> A: 2.10" (53.34) B: 6.00" (152.40)	<b>Cover</b> Satin anodized finish. Packed 40 ft. (12.19m) per carton, 5 ft. (1.5m) lengths	Anodized Aluminum	<b>HBLALUC5</b> A: 3.00" (76.20)

Assembled cover and base dimensions.  
W: 6.00" (152.40)  
H: 2.25" (57.15)



# Rough-In

## Hubbell SystemOne Furniture Feed Poke-Throughs

Hubbell's innovative SystemOne Delivery System includes flush furniture feed fire-rated poke through devices that are ideal for delivering power and data to furniture systems in today's computer lab settings. Able to feed up to a 2-inch conduit and accommodate up to 36 Category 5e network cables, the SystemOne Furniture Feed Poke-Through delivers whatever combination of power, data and audio/video connections are required for educational facilities to keep pace with technology.



### SystemOne Furniture Feed Poke-Throughs

Description	Color	Catalog Number without Junction Box	Catalog Number with Junction Box*
One-Piece Furniture Feed Poke-Through Assembled-unit includes: • Hubbell SystemOne AV floor fitting (S1PTAVFIT) • Hubbell SystemOne Furniture Feed Cover Plate (S1SPFFxx) • 4-hour fire classification	Aluminum Finish	<b>S1PTFFAL</b>	<b>S1PTFFALJ</b>
	Brass Finish	<b>S1PTFFBRS</b>	<b>S1PTFFBRSJ</b>
	Black	<b>S1PTFFBL</b>	<b>S1PTFFBLJ</b>
This solution provides one 3/4 in. conduit for power and one 1/2 in. conduit for low-voltage. Furnished with two screw-in flexible metal conduit connectors.	Gray	<b>S1PTFFGY</b>	<b>S1PTFFGYJ</b>

\*Junction box factory installed on through floor fitting



# Surgical Suites

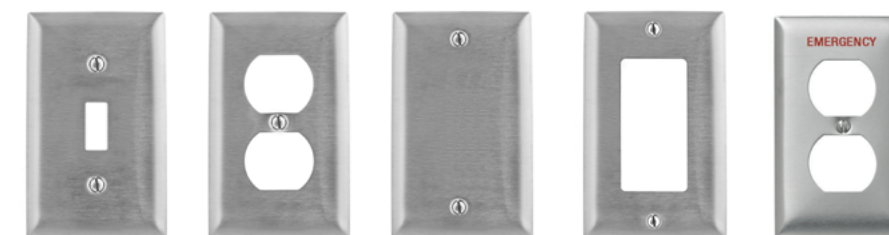


## Stainless Steel Wallplates

Hubbell's smooth, stainless steel wall plates are ideal for damp and corrosive environments. These non-magnetic plates are ideal for static-free environments, and their satin finish offers excellent cleanability while hiding fingerprint marks. Available in pre-marked and jumbo sizes, each plate includes matching stainless steel crews and is shipped with a special protective film to protect the plate during installation. They also offer impact resistance and improved aesthetics over other faceplates on the market.



Wiring Device-Kellems



### Stainless Steel Wallplates

Plate Type	Stainless Steel	1-Gang	2-Gang	3-Gang	4-Gang
Toggle Switch	S/S 302/304	SS1	SS2	SS3	SS4
	S/S 430	SS1L	SS2L	SS3L	SS4L
Duplex Receptacle	S/S 302/304	SS8	SS82	SS83	SS84
	S/S 430	SS8L	SS82L	—	—
Style Line® Decorator	S/S 302/304	SS26	SS262	SS263	SS264
	S/S 430	SS26L	SS262L	—	—
Blank	S/S 302/304	SS13	SS23	SS33	SS43
	S/S 430	SS13L	SS23L	—	—
Pre-Marked EMERGENCY	S/S 302/304	SS8MEV	SS82MEV	—	—

## Hospital Grade Insulgrip® Plugs and Connectors

Hubbell Hospital Grade Insulgrip® plugs and connectors are the industry standard for 15 and 20 Amp applications in any medical setting.

Available with a black and white or transparent housing, insulgrip devices ensure high impact, heat and chemical resistance. Hubbell designed Insulgrip plugs and connectors with a molded face to keep out dust and debris and a powerful cord gripping design for superior strain relief. Whether connecting mobile ultrasound equipment or patient monitoring devices, Hospital Grade Insulgrip devices provide better safety and reliability.



Wiring Device-Kellems



### Hospital Grade Plugs and Connectors

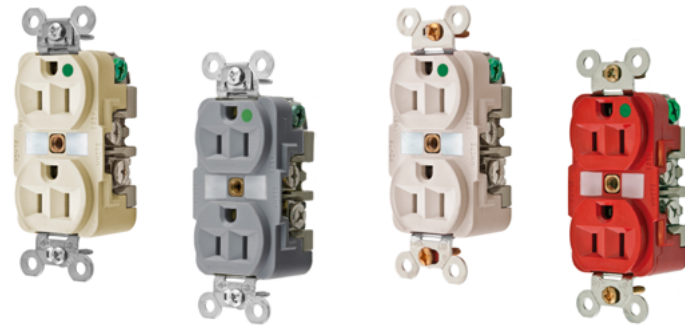
Amp / Volt	NEMA Rating	Poles/Wires	Color	Plug	Connector
15A 125V	5-15	2-Pole 3-Wire	Black and White	HBL8215C	HBL8219C
			Transparent	HBL8215CT	HBL8219CT
			Transparent	Angle Plug HBL8215CAT	
20A 125V	5-20	2-Pole 3-Wire	Black and White	HBL8315C	HBL8319C
			Transparent	HBL8315CT	HBL8319CT
			Transparent	Angle Plug HBL8315CAT	



**Hospital Grade Receptacles**

Hubbell Hospital Grade Receptacles are rigorously tested beyond UL requirements.

Extra Heavy Duty Hospital Grade receptacles offer superior electrical, thermal and mechanical properties and greater heat, impact and corrosion resistance. To comply with NEC Article 517-18(c), Hospital Grade Tamper Resistant Receptacles feature an innovative spring-loaded shutter mechanism that allows plugs to enter while resisting access by single-pronged items like keys, hairpins or nails. Hubbell Hospital Grade Receptacles are also available in Isolated Ground, MRI, Style Line Decorator and compact duplex receptacles.



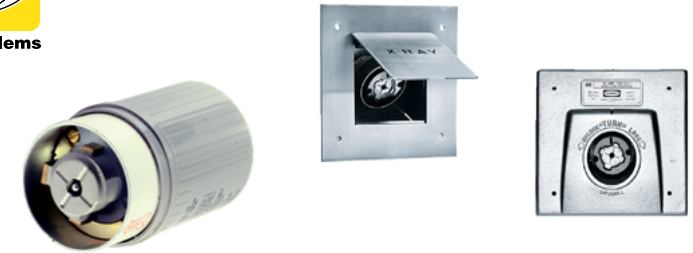
**Hospital Grade • Receptacles**

Description	Color	HBL® Extra Heavy Duty, Duplex		MRI Receptacles	
		15A 125V AC	20A 125V AC	15A 125V AC	20A 125V AC
Flush, thermoplastic polyester face, back and side wired, multiple drive screws.	Brown	HBL8200	HBL8300	—	—
	Gray	HBL8200GY	HBL8300GY	—	—
	Ivory	HBL8200I	HBL8300I	HBL8200IMRI	HBL8300IMRI
	Light Almond	HBL8200LA	HBL8300LA	HBL8200LAMRI	HBL8300LAMRI
	Red	HBL8200RED	HBL8300RED	HBL8200RMRI	HBL8300RMRI
White	HBL8200W	HBL8300W	HBL8200WMRI	HBL8300WMRI	

**Mobile X-Ray Devices**

Hubbellock® Mobile X-Ray Devices include the plugs and receptacles needed to safely and reliably connect and disconnect X-Ray machines in any medical setting.

These 50 and 60 Amp Mobile X-Ray devices are specifically designed to support the mobility of today's advanced diagnostic equipment, providing an extra margin of safety to eliminate the possibility of exterior arcing and maintaining their connection even if they are pulled and tugged. The Mobile X-Ray Receptacles are available with a stainless steel or cast aluminum plate assembly and a stamped steel box accessory with 1¼, 1½ and 2-inch knockouts to accommodate 50 and 60 Amp receptacles.



**Mobile X-Ray Plugs**

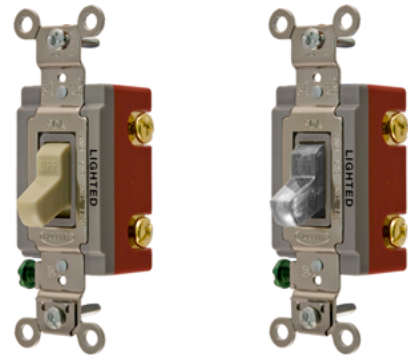
Description	Catalog No.	
Plug, with epoxy kit, less cord clamp.	HBL25515	HBL25615
Plug, with cord clamp, less epoxy kit.	HBL25525	HBL25625

**Mobile X-Ray Receptacles**

Description	Catalog No.	
Receptacle with stainless steel plate assembly.	HBL25505	HBL25605
Receptacle with cast aluminum plate assembly.	HBL25503	HBL25603
Replacement receptacle interior.	—	IN16494

**Illuminated Toggle Switches**

Hubbell's Illuminated Toggle Switches are perfect for hospital environments due to their rugged construction and heavy-duty nylon toggle. The toggle not only resists abuse and damage from chemicals, but also illuminates when the switch is in the OFF position. Available in 15A or 20A, and in single-pole or three-way configurations, Illuminated Toggle Switches can be used in applications where lights need to be controlled from two points. Offered in ivory or clear, the switches also feature back and side wire entrance points that accept two wires for feed-through capability.



**HBL Extra Heavy Duty Industrial Series Illuminated Toggle Switches, Light On with Load Off**

Description	Toggle Color	Rating	15A 125V	20A 125V
Nylon toggle, back and side wired	Ivory	15A 120-277V AC	HBL1201IL	HBL1203IL
	Ivory	20A 120-277V AC	HBL1221IL	HBL1223IL
	Clear	15A 120-277V AC	HBL1221ILC	HBL1223ILC
	Red	15A 120-277V AC	HBL1221ILR	—

**Hospital Grade Surge Protection Receptacles**

Hubbell Surge Protection Receptacles provide safe, reliable power in areas where equipment could be damaged from sudden surges of power.

These receptacles fit in standard wall boxes and have a power-on indicator light that verifies that power is available and the suppression circuit is fully functional. When the surge protection is no longer functioning, a damage alert alarm sounds and continues sounding until the receptacle is replaced or the muting screw is utilized.



**Circuit Guard® Hospital Grade • Duplex Receptacles**

Description	Color	15A 125V	20A 125V
Surge suppression receptacles with light and alarm, 240 joules/15000A per mode	Blue	HBL8262SA	HBL8362SA
	Red	HBL8262RSA	HBL8362RSA
	White	HBL8262WSA	HBL8362WSA
Isolated ground, surge suppression receptacles with light and alarm, 240 joules/15000A per mode	Blue	IG8262SA	IG8362SA
	Red	IG8262RSA	IG8362RSA
	White	IG8262WSA	IG8362WSA
4-PLEX surge suppression receptacles with lights, 80 joules/6500A per mode	Blue	—	HBL420HS
	Red	—	HBL420HRS

### Clean Phone® VoIP Telephone (Wall-Mount), UL

The Clean Phone® VoIP telephone offers hands-free communications over an existing VoIP network for clean room or sterile environments. These telephones are intended for connection, via RJ45, to a 10/100 BaseT Ethernet and using either PoE or an external DC power source.

The Clean Phone® VoIP telephone features alarm reporting that permits monitoring the telephone's activity and address maintenance issues immediately.



#### Clean Phone® Features:

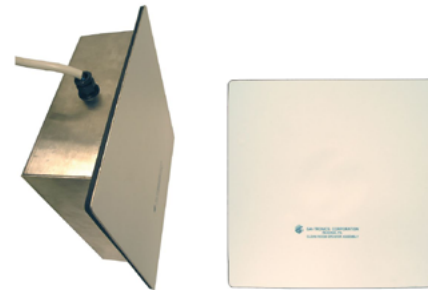
- Three auto-dial numbers allow quick communication at the touch of a button
- Completely smooth front panel is sealed with an overlay that keeps the phone particulate-free and makes cleaning quick and easy
- Oversized buttons with clearly marked functions permit operation for gloved hands
- Auto-answer feature
- Surface-mount model
- Automatic call divert (rollover), via memory list
- VoIP design, SIP compatible
- PoE or external 24–48V DC power

#### Applications:

- Clinical laboratories
- Surgical suites

### Clean Room Speaker; 8-ohm impedance

The Clean Room Speaker is ideal for clean room environments. The speaker is designed to provide outstanding voice reproduction for use in public address and general alarm applications. The unit can be ceiling mounted or flush mounted into a wall. The completely smooth front panel is sealed with an overlay that allows for wash-downs while keeping the environment particulate-free.



#### Clean Room Speaker Features:

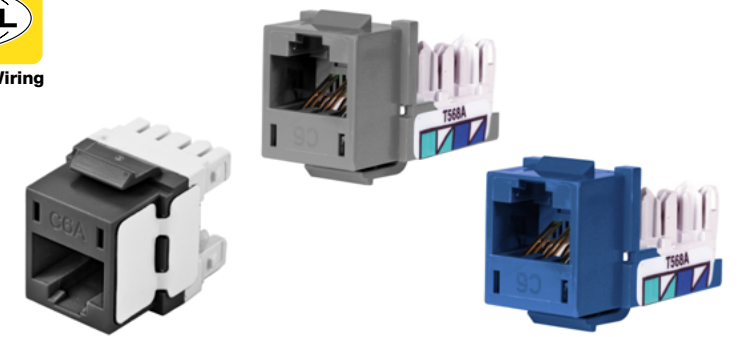
- Ceiling or wall flush mountable
- Outstanding voice reproduction
- Completely smooth front panel is sealed with an overlay that keeps the environment particulate-free
- Available in 8 ohms
- Stainless steel back-box

#### Applications:

- Clinical laboratories
- Surgical suites

### Data Jacks

Hubbell's category-rated modular Jacks deliver cutting-edge performance for today's IP-based voice, data, audio and video applications. From the latest Ethernet protocols like 10 Gig, to Power over Ethernet, VoIP and video, there's no application that Hubbell jacks can't handle. With the QuickLace termination process and 1-Punch tool, these jacks also deliver the fastest termination in the industry. Available in Category 6A, Category 6 and Category 5e performance, Hubbell data jacks easily install in a wide range of Hubbell plates, frames and surface mount boxes alongside modular AV connectors.



#### Data Jacks

Color	Category 6A	Category 6	Category 5e	Color	Category 6A	Category 6	Category 5e
Black	HJ6ABK	HXJ6BK	HXJ5EBK	Office White	HJ6AOW	HXJ6OW	HXJ5EOW
Blue	HJ6AB	HXJ6B	HXJ5EB	Orange	HJ6AOR	HXJ6OR	HXJ5EOR
Electric Ivory	HJ6AEI	HXJ6EI	HXJ5EEI	Purple	HJ6AP25	HXJ6P25	HXJ5EP25
Gold	HJ6AGL25	HXJ6GL25	HXJ5EGL25	Red	HJ6AR	HXJ6R	HXJ5ER
Gray	HJ6AGY	HXJ6GY	HXJ5EGY	White	HJ6AW	HXJ6W	HXJ5EW
Green	HJ6AGN	HXJ6GN	HXJ5EGN	Yellow	HJ6AY	HXJ6Y	HXJ5EY

Note: Gold and Purple available as 25-pack only

### Hubbell iSTATION HDMI Connectors

Offering powerful performance, iSTATION HDMI Connectors feature 110 style connections that transport full, high-definition 1080p signals along with flawless audio. The HDMI connectors are also available in keystone and coupler connections. A locking interface ensures a solid connection, and a four-inch connector tail gives added flexibility to applications where capacity may be restricted. Assemblies are also made to specified lengths, eliminating cable waste and helping with sustainability efforts. When used in conjunction with other iSTATION solutions, Hubbell's HDMI Connectors provide a practical way to deliver AV connections wherever they are needed.



#### HDMI 1.4 Connectors

Unit of Measure	Color	HDMI Keystone Feed Thru	HDMI Feed Thru Coupler	HDMI Feed Thru 3-Inch Tail
1 per bag	Black	SFHC14BK	HDMIC14	HDMIT14
	White	SFHC14W	—	—

## iSTATION Front-Loading Plates and Modules

For use at the work area, Hubbell iSTATION Front-Loading Plates are designed to flush mount with a box eliminator and adjustable leveling feature, ensuring a clean attractive appearance for any environment. Available from one to six ports and in single-gang version or higher port counts in 2-, 3- and 4-gang versions, iSTATION Front-Loading Plates fit all Hubbell keystone connections, including data, fiber, and AV connectors. With iSTATION Front-Loading Plates, it's easy to create a customized work area with connections for virtually any low-voltage application.



### Hubbell iSTATION Modular Face Plate Frames

Color	1-Gang	2-Gang
Black	IMF1BK	IMF2BK
Electric Ivory	IMF1EI	IMF2EI
Gray	IMF1GY	IMF2GY
Office White	IMF1OW	IMF2OW
White	IMF1W	IMF2W

### NEXTSPEED Ascent Category 6A Jacks

Color	Single Pack	25-Pack
Black	HJ6ABK	HJ6ABK25
Blue	HJ6AB	HJ6AB25
Office White	HJ6AOW	HJ6AOW25
Orange	HJ6AOR	HJ6AOR25
White	HJ6AW	HJ6AW25



# Common Areas & Public Spaces



## LE Series

Edge-Lit LED Architectural Exit Signs featuring elegant styling, easy installation and energy-saving, long-life LED lamps. Models are available for recessed ceiling, wall or end mounting.



### LE Series Features:

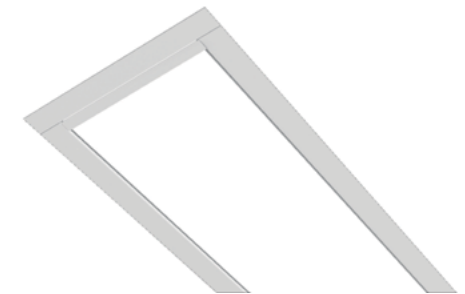
- Extruded aluminum construction
- Available in six color finishes: white, black, satin aluminum, satin brass, chrome, and dark bronze
- Long-life LED lamps
- Molded acrylic plaque
- Clear acrylic plaque standard
- Ceiling, wall or end mounted models for recessed installations

### Applications:

- Conditioned space

## MOD™ x 4L LED Recessed Slot

The MOD™ 4L LED Recessed Slot (4L-R-D) is part of the MODx family, which is an affordably-priced, full-featured offering with best-in-class attention to detail.



### MOD™ x Family Features:

- End cap design eliminates visible diffuser seams/gaps
- 2 SDCM color variation
- Available on Litespeed 10-Day Quick Ship program in select configurations
- SpectraSync™ Color Tuning Technology available
- NX Distributed Intelligence™ wired and wireless controls capability available
- PowerHUBB™ PoE Lighting and Control options available

### Applications:

- Commercial indoor
- Education
- Healthcare
- Institutional
- Library
- Office
- Public spaces
- Retail

Inde-Pendants Series

The combination of both Ring and Cylinder Pendant is an inspirational statement piece—a complete package with performance versatility.

**LITECONTROL**  
making light work™



**Inde-Pendants Series Features:**

- Variable Intensity Technology provides independently adjustable uplight and downlight levels
- The ring is extruded aluminum, providing a minimalistic form factor to house an internal flexible LED source
- Powered Suspension System (POAC) provides power for class 2 luminaires without the need of secondary power cord for a clean, elegant look
- Recessed J-Box with die cast aluminum canopy interface
- PowerHUBB™ PoE Lighting and Control options available

**Applications:**

- Common areas and public spaces
- Office and meeting spaces

LITEISTRY™ Family

The LITEISTRY™ family offers a broad palette of architectural downlighting solutions with consistent aperture appearance, quiet ceiling design, and optical performance. Create spaces with the confidence that LITEISTRY™ will complement your vision to transform every architectural space into a masterpiece.

**prescolite**



**LITEISTRY™**

**LITEISTRY™ Family Features:**

- Available in downlight, adjustable, wall wash and cylinder solutions
- Delivers a unified family appearance across 3 aperture sizes and 2 shapes
- 50° visual cutoff to source and source image to maintain the focus on the space - not the ceiling
- Available in a variety of beam distributions, dimming protocols, and housing configurations
- SpectraSync™ Color Tuning Technology and PowerHUBB™ PoE Lighting and Control options available

**Applications:**

- Offices
- Lobbies
- Conference rooms
- Hallways
- Public spaces
- Waiting room
- Dining areas

NX Distributed Intelligence™

Hubbell Control Solutions' NX Distributed Intelligence platform delivers a seamless lighting control solution. NX is capable of scaling from standalone fixture and room control applications to networked enterprise deployments. NX operates using wired, wireless and hybrid connectivity with native BACnet® support.

NX portfolio of compatible products provides the flexibility to easily scale from a single fixture to a complete building using a broad selection of multi-tiered control strategies.

**HUBBELL**  
Control Solutions



**NX Distributed Intelligence Features:**

- Multiple deployment options: wired, wireless and hybrid
- For indoor and outdoor applications
- Native BACnet support
- Supports Hubbell Lighting's SpectraSync™ Color Tuning Technology
- Ease of implementation with self-configuration feature and mobile app tool

**Applications:**

- General indoor and outdoor

Adaptive Technology Ceiling Sensors

Perfect for areas where lights are often inadvertently left on, Hubbell Adaptive Technology Ceiling Sensors use microprocessor-based technology that monitors the controlled area and automatically adjusts the sensitivity and timer based on environmental history. These devices reduce labor costs by eliminating the need to adjust the sensors for seasonal changes, furniture layout or occupancy pattern changes, while saving energy by automatically turning lights off when the restroom is vacant.

**HUBBELL**  
Wiring Device-Kellems



**Adaptive Technology Ceiling Sensors**

Combines the minor motion detection of ultrasonic with passive infrared (PIR) long-range major motion detection.

Description	Coverage	Color	Voltage	Catalog No.
Low voltage sensor with photocell and isolated relay	2000 sq. ft.	White	24V DC	ATD2000CRP
Low voltage sensor	2000 sq. ft.	White	24V DC	ATD2000C
Low voltage sensor	2000 sq. ft.	White	120-277V AC	ATD2000CL

\*Low voltage sensors must use a CU Series Control Unit

## Table Top Boxes

Ideal for conference rooms, training facilities and podiums, Hubbell Table Top Boxes are available in either single or dual-service configurations. The single low-voltage only Table Top Box includes either one microphone jack or a keystone opening to house any Hubbell Keystone Connector such as a data jack, USB coupler, stereo jack or other multi-media connection. The Dual-Service Table Top Box includes either one pre-wired 15A outlet with two keystone openings, an audio jack and 15-pin connection, or two pre-wired 15A outlets with two keystone openings. The pre-wired receptacle with corded end offers fast, easy installation. The Table Top Box also integrates with Hubbell's X-End Plug-n-Play Multimedia systems and features an attractive solid aluminum or brass cover that rotates to remain open.



### HBLALU4800 Series Two Channel Aluminum Raceway

Description	Finish	Dimensions	Blank Opening	XLR Microphone Jack
For 2 inch diameter hole configurations	Black Anod. Alum.	2.19" Diameter	TTBKS BK	TTBXL RBK
	Clear Anod. Alum.		TTBKS AL	TTBXL RAL
	Solid Brass		TTBKS BR	TTBXL RBR

### Pre-Wired Dual-Service

Description	Finish	Dimensions	(1) 15-pin and (1) 15A Outlet	(2) 15A Outlets
For 3.5 inch diameter hole configurations, 9 foot power supply cord	Black Anod. Alum.	3.88" Diameter	TTBDS1 BK	TTBDS2 BK
	Clear Anod. Alum.		TTBDS1 AL	TTBDS2 AL
	Solid Brass		TTBDS1 BR	TTBDS2 BR

## USB Charger Receptacles

Hubbell's USB Charger Receptacle provides both USB and electrical power in a standard single gang electrical opening. Designed to provide more charging options for personal electronics, the USB ports are capable of charging two tablets simultaneously. The tamper-resistant Style Line® decorator outlets provide additional power for appliance use. Ideal for use in offices, medical labs, patient rooms, classrooms, etc.



### USB Charger, Tamper-Resistant Duplex Receptacle

Description	Color	15A 125V AC	20A 125V AC
Two USB Type 2.0 Ports 5 Amp, 5 Volt DC, 15 or 20 Amp, 125 Volt AC Decorator Duplex	Black	USB8200A5BK	USB8300ASBK
	Gray	USB8200ASGY	USB8300ASGY
	Ivory	USB8200ASI	USB8300ASI
	Light Almond	USB8200ASLA	USB8300ASLA
	White	USB8200ASW	USB8300ASW

### USB Charger, 4 Port Outlet

Description	15A 125V AC
Four USB Type 2.0 Ports 5 Amp, 5 Volt DC, Style Line® Decorator	USB15X2BK
	USB15X2GY
	USB15X2I
	USB15X2LA
	USB15X2W

## Tamper-Resistant Receptacles

The standard in electrical safety, Hubbell Tamper-Resistant (TR) Receptacles feature an innovative spring-loaded shutter mechanism that allows plugs to enter while resisting access by single-pronged items like keys, hairpins or nails. Required by the NEC® in dwelling units, pediatric areas and in many public spaces, Hubbell TR Receptacles offer reliable, automatic and constant protection. They are available in several styles and colors to blend seamlessly into the décor, including standard duplex, Decorator style and single receptacles.



### 15A and 20A Tamper-Resistant Receptacles

Description	Color	15A 125V	20A 125V
Duplex, smooth nylon face.	Ivory	BR15ITR	BR20ITR
	White	BR15WHITR	BR20WHITR
Decorator, smooth nylon face.	Ivory	DR15ITR	DR20ITR
	White	DR15WHITR	DR20WHITR
Decorator, pre-wired receptacles; smooth nylon face; self-grounding; 8" stranded wire leads.	Ivory	DR15ITRP2	DR20ITRP2
	White	DR15WHITRP2	DR20WHITRP2

Also available in Black, Brown, Gray and Light Almond.

## HUBBCOM™ IP Devices

HUBBCOM™ IP Devices has a multi-functional design that will provide solutions for all your communication needs. It provides the ability to combine web application control, VoIP SIP telephone operation, overhead speaker broadcasts, and point-to-point server-less IP communication (audio and/or video).



### HUBBCOM IP Device Features:

- Point-to-point, serverless audio & video
- Overhead paging with intercom (soft zoning, multiple conference calls, serverless)
- SIP telephone option
- Access control option
- Web portal access (applications)
- 7-inch capacitive touchscreen
- Desktop or wall-mount with handset
- Intuitive operation
- 8 Ohm, 8W speaker output

### Applications:

- Common areas and public spaces
- Patient rooms
- Nurses' stations
- Offices and meeting spaces
- Data centers

### Behavioral Health Surface-Mount VoIP Telephone

GAI-Tronics' Behavioral Health series of rugged telephones are designed for use in environments where conversation privacy is desired but safety is a concern. The Model 210-700BH Surface-mount Handset Telephone is equipped with a shortened, 12-inch handset cord to prevent the handset being used as a weapon. The cord is also short enough to prevent the possibility of strangulation. Its rugged design provides both quality and longevity.



#### Behavioral Health Telephone Features:

- Surface-mount for indoor use
- Brushed stainless steel housing
- Front panel pushbutton volume control
- Handset with noise-canceling microphone, hearing aid-compatible receiver, and 12-inch armored cord with anchored lanyard
- Ringer with loudness control
- ADA compliant for corridor installation
- Power over Ethernet or alternative 24–48 VDC supply
- SIP compatible

#### Applications:

- Behavioral health
- Common areas and public spaces

### Wireless Access Box

Most facilities today offer Wi-Fi for staff and visitors. Hubbell's Wireless Access Boxes are ideal for housing and protecting low-voltage wireless access points that deliver Wi-Fi signals. Available in a plenum-rated, in-ceiling version that mounts into a standard 2X2 ceiling tile space, or in a wall-mount version, Hubbell wireless access boxes accommodate the latest wireless access point sizes, including CISCO Aironet series. The Hubbell Wireless Access Box features a keyed, continuous-hinged door to keep equipment safe and two 1-inch antenna openings spaced 5 inches apart.



#### Wireless Access Point Ceiling Box

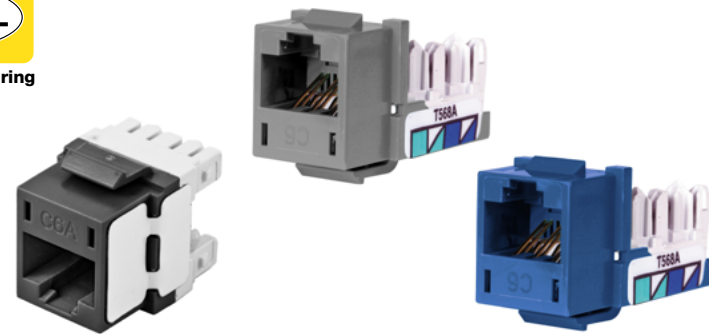
Description	Mounting Plate Dims. H x W	External Dims. H x W x D	Door Weight Capacity (Lbs.)	Total Capacity (Lbs.)	Cable Entry Dimensions	Catalog Number
Universal WAP enclosure	9.7" x 5.25"	4" x 10" x 12.7"	15	20	6.5" x 1.2"	WBC1

#### Wireless Access Point Wall Box

Description	External Dims. H x W x D	Weight (Lbs.)	Color	Catalog Number
Wall box	8" x 11" x 3"	1.5	Office White	WBW1OW
Wall box	8" x 11" x 3"	1.5	Black	WBW1BK
Spare key box lock key				KEY333

### Data Jacks

Hubbell's category-rated modular Jacks deliver cutting-edge performance for today's IP-based voice, data, audio and video applications. From the latest Ethernet protocols like 10 Gig, to Power over Ethernet, VoIP and video, there's no application that Hubbell jacks can't handle. With the QuickLace termination process and 1-Punch tool, these jacks also deliver the fastest termination in the industry. Available in Category 6A, Category 6 and Category 5e performance, Hubbell data jacks easily install in a wide range of Hubbell plates, frames and surface mount boxes alongside modular AV connectors.



#### Data Jacks

Color	Category 6A	Category 6	Category 5e	Color	Category 6A	Category 6	Category 5e
Black	HJ6ABK	HXJ6BK	HXJ5EBK	Office White	HJ6AOW	HXJ6OW	HXJ5EOW
Blue	HJ6AB	HXJ6B	HXJ5EB	Orange	HJ6AOR	HXJ6OR	HXJ5EOR
Electric Ivory	HJ6AEI	HXJ6EI	HXJ5EEI	Purple	HJ6AP25	HXJ6P25	HXJ5EP25
Gold	HJ6AGL25	HXJ6GL25	HXJ5EGL25	Red	HJ6AR	HXJ6R	HXJ5ER
Gray	HJ6AGY	HXJ6GY	HXJ5EGY	White	HJ6AW	HXJ6W	HXJ5EW
Green	HJ6AGN	HXJ6GN	HXJ5EGN	Yellow	HJ6AY	HXJ6Y	HXJ5EY

Note: Gold and Purple available as 25-pack only

### Hubbell SystemOne Furniture Feed Poke-Throughs

Hubbell's innovative SystemOne Delivery System includes flush furniture feed fire-rated poke through devices that are ideal for delivering power and data to furniture systems in today's computer lab settings. Able to feed up to a 2-inch conduit and accommodate up to 36 Category 5e network cables, the SystemOne Furniture Feed Poke-Through delivers whatever combination of power, data and audio/video connections are required for educational facilities to keep pace with technology.



#### SystemOne Furniture Feed Poke-Throughs

Description	Color	Catalog Number without Junction Box	Catalog Number with Junction Box*
One-Piece Furniture Feed Poke-Through Assembled-unit includes: • Hubbell SystemOne AV floor fitting (S1PTAVFIT) • Hubbell SystemOne Furniture Feed Cover Plate (S1SPFFxx) • 4-hour fire classification	Aluminum Finish	S1PTFFAL	S1PTFFALJ
	Brass Finish	S1PTFFBRS	S1PTFFBRSJ
	Black	S1PTFFBL	S1PTFFBLJ

This solution provides one 3/4 in. conduit for power and one 1/2 in. conduit for low-voltage. Furnished with two screw-in flexible metal conduit connectors.

\*Junction box factory installed on through floor fitting

# Corridors & Stairwells



## LCAT

LCAT LED Contemporary Architectural Troffer provides both design and value with an architectural appearance, LED technology to reduce maintenance and a full family including 2'x4', 2'x2', 1'x4' and 1'x2' sizes. High efficiency acrylic center lens features linear prisms for superior performance without LED pixelation.

**Columbia**  
LIGHTING



### LCAT Features:

- High performance reflector with matte white paint standard
- Lightweight housing and electrical components fully accessible from below the ceiling for easy installation and maintenance
- 60,000 hour LEDs at L80 (up to 150,000 projected life) for reduced maintenance
- Surface and cable mount options available
- Controls compatible with NX Distributed Intelligence™ and SpectraSync™ Color Tuning Technology
- DLC® (DesignLights Consortium) Qualified, with some Premium Qualified configurations

### Applications:

- Conference rooms
- Common areas
- Public spaces
- Offices
- Hallways

## Escalate™ Stairwell Luminaire

Escalate is an attractive solution to safely and intelligently light your stairwells. Occupancy controlled dimming gives light when you need it, but dims to save energy when the space is unoccupied. Since Escalate offers two lens options and three lengths, you can easily configure Escalate to blend with your space. Additionally, Escalate's continuous light ensures a clean, modern look in your stairwells and access areas. Available in 2', 4' or 8' lengths.

**Columbia**  
LIGHTING



### Escalate Features:

- Superior color consistency within a 3-step MacAdam ellipse and greater than 80 CRI
- Optional integral emergency battery pack
- Heavy die-formed steel channel with 100% acrylic formed diffuser
- Modular replaceable LED boards and driver accessible for future maintenance or upgrades
- Surface mount, wall mount
- Controls compatible with NX Distributed Intelligence™
- DLC® (DesignLights Consortium) Qualified, with some Premium Qualified configurations

### Applications:

- Stairwell
- Utility
- Corridor



SE Series

Exit sign construction is of high-strength cast aluminum in a choice of textured white, white with brushed face, black or black with brushed face finish.



SE Series Features:

- High-strength cast aluminum
- Long-life LED lamps
- Red or green letter models
- Universal single/double face
- White, black and black or white with brushed face finishes
- Universal end/ceiling/wall mounting
- Damp location

Applications:

- Conditioned space

Hospital Grade Receptacles

Hubbell Hospital Grade Receptacles are rigorously tested beyond UL requirements.

Extra Heavy Duty Hospital Grade receptacles offer superior electrical, thermal and mechanical properties and greater heat, impact and corrosion resistance. To comply with NEC Article 517-18(c), Hospital Grade Tamper Resistant Receptacles feature an innovative spring-loaded shutter mechanism that allows plugs to enter while resisting access by single-pronged items like keys, hairpins or nails. Hubbell Hospital Grade Receptacles are also available in Isolated Ground, MRI, Style Line Decorator and compact duplex receptacles.



Hospital Grade • Receptacles

Description	Color	HBL® Extra Heavy Duty, Duplex		MRI Receptacles	
		15A 125V AC	20A 125V AC	15A 125V AC	20A 125V AC
Flush, thermoplastic polyester face, back and side wired, multiple drive screws.	Brown	HBL8200	HBL8300	—	—
	Gray	HBL8200GY	HBL8300GY	—	—
	Ivory	HBL8200I	HBL8300I	HBL8200IMRI	HBL8300IMRI
	Light Almond	HBL8200LA	HBL8300LA	HBL8200LAMRI	HBL8300LAMRI
	Red	HBL8200RED	HBL8300RED	HBL8200RMRI	HBL8300RMRI
	White	HBL8200W	HBL8300W	HBL8200WMRI	HBL8300WMRI

EVC Series

The EVC Series is a compact architectural LED combination exit and emergency lighting unit designed for fast installation and reliable service.



EVC Series Features:

- High impact, flame rated and UV stable white thermoplastic housing
- Fully aimable, dual-racheting high output LED lamp-heads
- UL 924 Listed (optional damp location listed)
- US Patent Pending
- Optional: Self-Test/Self-Diagnostics
- Optional: VRS3 - Vandal Resistant Shield
- Remote capacity models have a minimum run-time of 120 minutes when no remotes are installed

Applications:

- Common areas and public spaces
- Corridor and stairwell
- Engineering
- Data centers
- Nurses' stations
- Office and meeting spaces

HUBBCOM™ IP Devices

HUBBCOM™ IP Devices has a multi-functional design that will provide solutions for all your communication needs. It provides the ability to combine web application control, VoIP SIP telephone operation, overhead speaker broadcasts, and point-to-point server-less IP communication (audio and/or video).



HUBBCOM IP Device Features:

- Point-to-point, serverless audio & video
- Overhead paging with intercom (soft zoning, multiple conference calls, serverless)
- SIP telephone option
- Access control option
- Web portal access (applications)
- 7-inch capacitive touchscreen
- Desktop or wall-mount with handset
- Intuitive operation
- 8 Ohm, 8W speaker output

Applications:

- Common areas and public spaces
- Patient rooms
- Nurses' stations
- Offices and meeting spaces
- Data centers

## RED ALERT® VoIP Hands-free Emergency Telephone

GAI-Tronics' RED ALERT® hands-free VoIP surface-mount telephones are designed to provide direct point-to-point communication between personnel throughout a facility over an existing Internet Protocol LAN. The VoIP telephones are intended for connection to a 10/100 BaseT Ethernet and operate using power-over-Ethernet or an alternative power source. The VoIP telephone features real-time alarm reporting that enables system supervisors to monitor the phone's activity and address callers needs or maintenance issues immediately.



### RED ALERT® Features:

- Safety yellow
- Available in non-metallic (393-00x) or cast aluminum (393AL-00x) enclosure
- Designed for surface-mounting
- Includes EMERGENCY push button

### Applications:

- Common areas and public spaces
- Corridor and stairwell



# Office & Meeting Spaces



## Arcos® 13L LED Pendant Indirect/Direct

Arcos LED Indirect/Direct Pendant (13L-P) is an architectural curved shape with Variable Intensity technology that provides independently adjustable uplight and downlight levels.

LITECONTROL  
making light work™



### Arcos Features:

- Variable Intensity technology provides independently adjustable uplight and downlight levels
- Windowless design provides for continuous lens along all fixture lengths
- 2 SDCM color variation
- Standard (Lambertian) and low peak angle uplight options

### Applications:

- Healthcare
- Education
- Entertainment
- Offices
- Institutional
- Hospitality

## MOD™ x 6L LED Pendant Indirect/Direct

The MOD™ 6L LED Pendant Indirect/Direct (6L-P-ID) is part of the MODx family, which is an affordably-priced, full-featured offering with best-in-class attention to detail.

LITECONTROL  
making light work™



### MOD™ x Family Features:

- End cap design eliminates visible diffuser seams/gaps
- 2 SDCM color variation
- Available on Litespeed 10-Day Quick Ship program in select configurations
- SpectraSync™ Color Tuning Technology available
- NX Distributed Intelligence™ wired and wireless controls capability available

### Applications:

- Commercial indoor
- Education
- Healthcare
- Institutional
- Library
- Office
- Public space
- Retail

LE Series

Edge-Lit LED Architectural Exit Signs featuring elegant styling, easy installation and energy-saving, long-life LED lamps. Models are available for recessed ceiling, wall or end mounting.



LE Series Features:

- Extruded aluminum construction
- Available in six color finishes: white, black, satin aluminum, satin brass, chrome, and dark bronze
- Long-life LED lamps
- Molded acrylic plaque
- Clear acrylic plaque standard
- Ceiling, wall or end mounted models for recessed installations

Applications:

- Conditioned space

Versify™ Architectural Edge-Lit

Versify™ Architectural Edge-Lit balances clean, streamlined architectural elements with high performance, making it the perfect complement to a wide variety of applications. The smooth, even illumination of the edge-lit lenses produces a look of continuity across the face of the luminaire with a low glare element. Energy savings are easily achieved with Versify's high lumen per watt performance and optional controls compatibility.



Versify Features:

- Available in 1x2, 1x4, 2x2 and 2x4 sizes
- Edge-lit technology maximizes luminous area and increases overall visual comfort
- 2" shallow depth for restricted plenum spaces
- Unobtrusive controls integration with NX Distributed Intelligence™ and SpectraSync™ Color Tuning Technology
- CSA certified to UL 924 standards and UL Sanitation to NSF standards
- DLC® (DesignLights Consortium) Qualified, with some Premium Qualified configurations

Applications:

- Conference rooms
- Common areas
- Public spaces
- Offices
- Hallways

NX Distributed Intelligence™

Hubbell Control Solutions' NX Distributed Intelligence platform delivers a seamless lighting control solution. NX is capable of scaling from standalone fixture and room control applications to networked enterprise deployments. NX operates using wired, wireless and hybrid connectivity with native BACnet® support.

NX portfolio of compatible products provides the flexibility to easily scale from a single fixture to a complete building using a broad selection of multi-tiered control strategies.



NX Distributed Intelligence Features:

- Multiple deployment options: wired, wireless and hybrid
- For indoor and outdoor applications
- Native BACnet support
- Supports Hubbell Lighting's SpectraSync™ Color Tuning Technology
- Ease of implementation with self-configuration feature and mobile app tool

Applications:

- General indoor and outdoor

Adaptive Technology Ceiling Sensors

Perfect for areas where lights are often inadvertently left on, Hubbell Adaptive Technology Ceiling Sensors use microprocessor-based technology that monitors the controlled area and automatically adjusts the sensitivity and timer based on environmental history. These devices reduce labor costs by eliminating the need to adjust the sensors for seasonal changes, furniture layout or occupancy pattern changes, while saving energy by automatically turning lights off when the restroom is vacant.



Adaptive Technology Ceiling Sensors

Combines the minor motion detection of ultrasonic with passive infrared (PIR) long-range major motion detection.

Description	Coverage	Color	Voltage	Catalog No.
Low voltage sensor with photocell and isolated relay	2000 sq. ft.	White	24V DC	ATD2000CRP
Low voltage sensor	2000 sq. ft.	White	24V DC	ATD2000C
Low voltage sensor	2000 sq. ft.	White	120-277V AC	ATD2000CL

\*Low voltage sensors must use a CU Series Control Unit

**Isolated Ground Receptacles**

Computers, FAX machines, televisions, cash registers and any other electronic equipment can be severely impacted by ground noise and interference. Hubbell isolated ground receptacles provide point-of-use protection for a variety of equipment. Developed by Hubbell several decades ago, these devices feature a patented insulating barrier construction that isolates the ground contacts, an impact-resistant nylon face, and superior heat and flame resistance. Easy to install and clearly marked with the amperage and voltage, Hubbell isolated ground receptacles are available in several configurations and colors.



**Hubbell-Pro Heavy Duty, Specification Grade, Duplex Isolated Ground Receptacles**

Color	Smooth Face		Finder Groove Face	
	15A 125V	20A 125V	15A 125V	20A 125V
Black	-	-	CR5252IGBK	CR5352IGBK
Blue	-	-	-	CR5352IGBL
Gray	IG5252GY	IG5352GY	CR5252IGGY	CR5352IGGY
Ivory	IG5252I	IG5352I	CR5252IGI	CR5352IGI
Light Almond	IG5252LA	IG5352LA	-	-
Orange	IG5252	IG5352	CR5252IG	CR5352IG
Office White	-	-	CR5252IGOW	CR5352IGOW
White	IG5252W	IG5352W	CR5252IGW	CR5352IGW

**SNAPConnect® USB Charger Receptacles**

Hubbell's USB Charger Receptacle provides both USB and electrical power in a standard single gang electrical opening. Designed to provide more charging options for personal electronics, the USB ports are capable of charging two tablets simultaneously. The tamper-resistant Style Line® decorator outlets provide additional power for appliance use. Ideal for use in offices, medical labs, patient rooms, classrooms, etc.



**SNAPConnect® USB Charger Duplex Receptacles**

Description	Color	15A 125V AC		20A 125V AC	
		SNAP8200USBBK	SNAP8300USBBK	SNAP15USBBK	SNAP20USBBK
Two USB type 2.0 ports, 3.0 Amp, 5 Volt DC, 15 or 20 Amp, 125 Volt AC, Style Line® decorator duplex.	Black	SNAP8200USBBK	SNAP8300USBBK	SNAP15USBBK	SNAP20USBBK
	Brown	SNAP8200USB	SNAP8300USB	SNAP15USB	SNAP20USB
	Gray	SNAP8200USBGY	SNAP8300USBGY	SNAP15USBGY	SNAP20USBGY
	Ivory	SNAP8200USBI	SNAP8300USBI	SNAP15USBI	SNAP20USBI
	Light Almond	SNAP8200USBLA	SNAP8300USBLA	SNAP15USBLA	SNAP20USBLA
	Red	SNAP8200USBR	SNAP8300USBR	-	-
White	SNAP8200USBW	SNAP8300USBW	SNAP15USBW	SNAP20USBW	

**Right Angle Pigtailed Terminal**

Description	Standard
Clear terminal with 6-inch leads solid wire	SNAP1RA
Clear terminal with 6-inch leads stranded wire	SNAP2RA

**Surge Protection Receptacles**

Hubbell Surge Protection Receptacles provide safe reliable power in areas where equipment could be damaged from sudden surges in power.

These receptacles fit in standard wall boxes, and have a power-on indicator light that verifies that power is available and the suppression circuit is fully functional. When the surge protection is no longer functioning, a damage alert alarm sounds and continues sounding until the receptacle is replaced or the muting screw is utilized.



**Circuit Guard®, Specification Grade Duplex Receptacles**

Description	Color	15A 125V		20A 125V	
		HBL5260SA	HBL5360SA	HBL5260ISA	HBL5360ISA
Surge suppression receptacles with light, 240 joules/15000A per mode.	Blue	HBL5260SA	HBL5360SA	HBL5260ISA	HBL5360ISA
	Ivory	HBL5260ISA	HBL5360ISA	HBL5260OWSA	HBL5360OWSA
	Office White	HBL5260OWSA	HBL5360OWSA	HBL5260WSA	HBL5360WSA
Surge suppression receptacles with light and alarm, 240 joules/15000A per mode.	White	HBL5260WSA	HBL5360WSA	HBL5262ALSA	HBL5362ALSA
	Almond	HBL5262ALSA	HBL5362ALSA	HBL5262SA	HBL5362SA
	Blue	HBL5262SA	HBL5362SA	HBL5262GYSA	HBL5362GYSA
	Gray	HBL5262GYSA	HBL5362GYSA	HBL5262ISA	HBL5362ISA
	Ivory	HBL5262ISA	HBL5362ISA	HBL5262OWSA	HBL5362OWSA
	Office White	HBL5262OWSA	HBL5362OWSA	HBL5262WSA	HBL5362WSA
White	HBL5262WSA	HBL5362WSA			

**Combination Wireless Wall Mount Charger & USB Outlet**

Hubbell's Qi certified wireless chargers deliver a new convenience: you no longer have to deal with cords or poor connections while charging your devices. Designed to be aesthetically pleasing and durable, this device will organize your workplace or home, seamlessly transforming any ordinary space or counter into a organized, accessible "drop zone" to charge multiple devices at once.



**Charger/Outlet Features:**

- Qi certified
- Easy single gang installation
- Two inductive coils for optimum target area
- 7.5W capacity wireless output
- LED indication: green for power, blue when charging
- cULus listed and FCC listed

**Applications:**

- Patient rooms
- Nurses' stations
- Offices
- Airports
- Education
- Homes
- Restaurants

HUBBCOM™ IP Devices

HUBBCOM™ IP Devices has a multi-functional design that will provide solutions for all your communication needs. It provides the ability to combine web application control, VoIP SIP telephone operation, overhead speaker broadcasts, and point-to-point server-less IP communication (audio and/or video).



HUBBCOM IP Device Features:

- Point-to-point, serverless audio & video
- Overhead paging with intercom (soft zoning, multiple conference calls, serverless)
- SIP telephone option
- Access control option
- Web portal access (applications)
- 7-inch capacitive touchscreen
- Desktop or wall-mount with handset
- Intuitive operation
- 8 Ohm, 8W speaker output

Applications:

- Common areas and public spaces
- Patient rooms
- Nurses' stations
- Offices and meeting spaces
- Data centers

Hubbell iSTATION Furniture Plates

Hubbell furniture plates integrate seamlessly with a variety of office furniture systems, including Steelcase, Herman Miller, Haworth, HON and Knoll furniture openings. They offer a sleek, contemporary design that positions connectivity outside the furniture channel for maximum internal capacity. Hubbell furniture plates are available in 2-port or 4-port configurations, with the 4-port option available in either stacked 2-over-2 or linear port configurations. Each plate is made of durable high-impact thermoplastic housing with openings to fit any keystone data jack and adequate labeling space for easy identification.



Furniture Plates (Steelcase®, Haworth®, HON®, Knoll®, etc.)

Opening Size: 2.71" x 1.38"			
Color	2-Port	4-Port	4-Port
Black	FP2BK	FP4BK	FP4BBK
Gray	FP2GY	FP4GY	FP4BGY

Data Jacks

Hubbell's category-rated modular Jacks deliver cutting-edge performance for today's IP-based voice, data, audio and video applications. From the latest Ethernet protocols like 10 Gig, to Power over Ethernet, VoIP and video, there's no application that Hubbell jacks can't handle. With the QuickLace termination process and 1-Punch tool, these jacks also deliver the fastest termination in the industry. Available in Category 6A, Category 6 and Category 5e performance, Hubbell data jacks easily install in a wide range of Hubbell plates, frames and surface mount boxes alongside modular AV connectors.



Data Jacks

Color	Category 6A	Category 6	Category 5e	Color	Category 6A	Category 6	Category 5e
Black	HJ6ABK	HXJ6BK	HXJ5EBK	Office White	HJ6AOW	HXJ6OW	HXJ5EOW
Blue	HJ6AB	HXJ6B	HXJ5EB	Orange	HJ6AOR	HXJ6OR	HXJ5EOR
Electric Ivory	HJ6AEI	HXJ6EI	HXJ5EEI	Purple	HJ6AP25	HXJ6P25	HXJ5EP25
Gold	HJ6AGL25	HXJ6GL25	HXJ5EGL25	Red	HJ6AR	HXJ6R	HXJ5ER
Gray	HJ6AGY	HXJ6GY	HXJ5EGY	White	HJ6AW	HXJ6W	HXJ5EW
Green	HJ6AGN	HXJ6GN	HXJ5EGN	Yellow	HJ6AY	HXJ6Y	HXJ5EY

Note: Gold and Purple available as 25-pack only

Hubbell SystemOne Furniture Feed Poke-Throughs

Hubbell's innovative SystemOne Delivery System includes flush furniture feed fire-rated poke through devices that are ideal for delivering power and data to furniture systems in today's computer lab settings. Able to feed up to a 2-inch conduit and accommodate up to 36 Category 5e network cables, the SystemOne Furniture Feed Poke-Through delivers whatever combination of power, data and audio/video connections are required for educational facilities to keep pace with technology.



SystemOne Furniture Feed Poke-Throughs

Description	Color	Catalog Number without Junction Box	Catalog Number with Junction Box*
One-Piece Furniture Feed Poke-Through Assembled-unit includes: • Hubbell SystemOne AV floor fitting (S1PTAVFIT) • Hubbell SystemOne Furniture Feed Cover Plate (S1SPFFxx) • 4-hour fire classification	Aluminum Finish	S1PTFFAL	S1PTFFALJ
	Brass Finish	S1PTFFBRS	S1PTFFBRSJ
	Black	S1PTFFBL	S1PTFFBLJ
This solution provides one ¾ in. conduit for power and one ½ in. conduit for low-voltage. Furnished with two screw-in flexible metal conduit connectors.	Gray	S1PTFFGY	S1PTFFGYJ

\*Junction box factory installed on through floor fitting

# Data Centers



## LCAT

LCAT LED Contemporary Architectural Troffer provides both design and value with an architectural appearance, LED technology to reduce maintenance and a full family including 2'x4', 2'x2', 1'x4' and 1'x2' sizes. High efficiency acrylic center lens features linear prisms for superior performance without LED pixelation.

**Columbia**  
LIGHTING



### LCAT Features:

- High performance reflector with matte white paint standard
- Lightweight housing and electrical components fully accessible from below the ceiling for easy installation and maintenance
- 60,000 hour LEDs at L80 (up to 150,000 projected life) for reduced maintenance
- Surface and cable mount options available
- Controls compatible with NX Distributed Intelligence™ and SpectraSync™ Color Tuning Technology
- DLC® (DesignLights Consortium) Qualified, with some Premium Qualified configurations

### Applications:

- Conference rooms
- Common areas
- Public spaces
- Offices
- Hallways

## MultiPurpose Linear - MPS

MultiPurpose Linear is a versatile linear solution that will fit seamlessly into countless applications. With continuous illumination, integrated controls, multiple lens options and single or row mounting, MultiPurpose Linear is adaptable to your environment. Available in 2', 4' or 8' lengths.

**Columbia**  
LIGHTING



### MultiPurpose Linear Features:

- Long life 60,000 hour LEDs at L80 for reduced maintenance
- Superior color consistency within a 3-step MacAdam ellipse and greater than 80 CRI
- Optional integral emergency battery pack
- Modular replaceable LED boards and driver accessible for future maintenance or upgrades
- Controls compatible with NX Distributed Intelligence™ and SpectraSync™ Color Tuning Technology
- DLC® (DesignLights Consortium) Qualified, with Premium Qualified configurations

### Applications:

- Commercial indoor
- Retail
- General office
- Industrial
- Warehouse

## NX Distributed Intelligence™

Hubbell Control Solutions' NX Distributed Intelligence platform delivers a seamless lighting control solution. NX is capable of scaling from standalone fixture and room control applications to networked enterprise deployments. NX operates using wired, wireless and hybrid connectivity with native BACnet® support.

NX portfolio of compatible products provides the flexibility to easily scale from a single fixture to a complete building using a broad selection of multi-tiered control strategies.



### NX Distributed Intelligence Features:

- Multiple deployment options: wired, wireless and hybrid
- For indoor and outdoor applications
- Native BACnet support
- Supports Hubbell Lighting's SpectraSync™ Color Tuning Technology
- Ease of implementation with self-configuration feature and mobile app tool

### Applications:

- General indoor and outdoor

## NX Lighting Control Panels (8,16, 24, 32 and 48 Relays)

The NX Series Network Lighting Control Panels are a key component in a NX Network Lighting Control System, providing programmable switching and dimming control of the projects lighting circuits. Panels are equal peers on the network and can have relays and dimmers controlled individually or in groups by any local input, system input, schedule, preset, photocell, or building automation system. Panels can be used exclusively or be part of a hybrid system that includes wired and wireless room controllers comprising a distributed control strategy.



### NX Lighting Control Panels Features:

- Standard Relay: 30A/1P latching (18K SCCR)
- Optional Relays: 20A/2P N/O, 2A/2P N/C (14K SCCR)
- Multi-channel, 0–10V dimming option
- Astronomical and real time clock
- Downloadable schedules run in each panel

### Applications:

- Commercial Indoor
- Education
- Healthcare
- Hospitality
- Manufacturing
- Retail
- Warehouse

## NX Area Controller

The NX Area Controller allows any PC with an Internet Explorer® compatible browser to interface with the NX Distributed Intelligence™ Lighting Control Platform through a built-in web server. The NX Area Controller provides an easy-to-use and highly intuitive graphical user interface (GUI). System users can easily program, monitor and control (locally or remotely) the functions of the NX lighting controls system conveniently from their PC—all without installing software. The NX Area Controller is the central component in a NX Networked Lighting Control System. It connects to the HubbNET™ network providing communication with the NX Lighting Control Panels, NX Room Controllers, NX SmartPORT™ Modules and other wired NX system components. The NX Wireless Access Point additionally extends connectivity to NX Wireless Room Controllers, and fixture modules. Integration with building automation systems is simplified by the embedded BACnet® IP client that can be field configured through the GUI to expose selected NX system components as standard BACnet objects.



### NX Area Controller Features:

- No software required—built-in web server provides connection via any Internet Explorer compatible browser
- Graphical User Interface (GUI) makes programming both intuitive and simple
- Local or remote access via the local network or Internet
- Connect to multiple users at once

### Applications:

- Commercial indoor
- Education
- Healthcare
- Hospitality
- Manufacturing
- Retail
- Warehouse

## Extra Heavy Duty Receptacles

Power receptacles need proven durability and reliability to withstand frequent plug-ins and ensure safety. Hubbell's HBL Extra Heavy Duty receptacles are designed for superior impact resistance, greater heat and corrosion resistance, and reduced stripping. They offer superior electrical, thermal and mechanical properties while providing the safest, most reliable design for a low resistance flow of fault currents and fast, easy installation. Extra Heavy Duty receptacles are available as 15 and 20 Amp devices in either duplex, single or weather resistant version.



### HBL® Extra Heavy Duty Industrial Series

Rating	Color	Duplex	Weather Resistant	Single
15A 125V	Brown	HBL5262	HBL5262WR	HBL5261
	Black	HBL5262BK	HBL5262BKWR	HBL5261BK
	Ivory	HBL5262I	HBL5262IWR	HBL5261I
20A 125V	Brown	HBL5362	HBL5362WR	HBL5361
	Black	HBL5362BK	HBL5362BKWR	HBL5361BK
	Ivory	HBL5362I	HBL5362IWR	HBL5361I



## Hubbell Advantage™ Series Pin and Sleeve Device

Hubbell's Advantage Series Pin and Sleeve devices provide safe, dependable electrical performance in a variety of environments.

Hubbell combined the advantages of their top performing IEC pin and sleeve with the capabilities of a UL 2682 switch-rated device. Hubbell's standard industrial pin and sleeve is HP rated and recognized as a disconnecting means. The Advantage Series provides the only Switch-Rated IEC Pin and Sleeve Devices in the market. By working with existing installed IEC 60309-2 pin and sleep plug and inlet bases, customers save both time and money.

The Advantage Series are UL witnesses IP69K and UL Type 4X and 12 devices. They are designed for use in harsh environments — the devices offer protection against water and dust, even during times of high water flow or in areas the excessive amounts of dust.



**Ergonomic Design**  
The easy-to-use leverage grip design from Hubbell puts the Advantage into the palm of your hands.

### 30A Advantage Series Switched P&S

Rating Color Coded by Voltage	Poles/Wires	Connector	Receptacle	Mating Plug*
30A 125V	2P/3W	HBL5330C4W	HBL5330R4W	HBL5330P4W
30A 250V	2P/3W	HBL5330C6W	HBL5330R6W	HBL5330P6W
30A 125/250V	3P/4W	HBL5430C12W	HBL5430R12W	HBL5430P12W
30A 3Ø 480V	3P/4W	HBL5430C7W	HBL5430R7W	HBL5430P7W
30A 3Ø 600V	3P/4W	HBL5430C5W	HBL5430R5W	HBL5430P5W
30A 3ØY 277/480V	4P/5W	HBL5530C7W	HBL5530R7W	HBL5530P7W

\*Mating plug required to maintain 4X/IP69k ratings. HP Ratings when used with Advantage Series connections. Additional devices available.

## Hubbell Twist-Lock® Locking Devices

Hubbell Twist-Lock devices, available in 15, 20, and 3 Amp, are the industry standard for locking plugs and receptacles. The plug and connector feature a powerful cord grip that clamps the conductors, not just the cable jacket, making it the most powerful cord grip in the industry. The tough ribbed nylon housing provides secure gripping while ensuring impact and corrosion resistance. An individually molded face for each blade configuration keeps debris out of the plug while the dust shield provides additional protection from contamination. Hubbell also offers a variety of Twist-Lock receptacles that combine functional design and features for secure and easy mating. Only Twist-Lock delivers premium service and longer life while keeping electrical connections connected.



### Hubbell Twist-Lock® Locking Devices

NEMA Rating Color Coded by Voltage	Poles/Wires	Plug	Connector	Receptacle	
15A 125V	L5-15	2P/3W	HBL4720C	HBL4729C	HBL4710
20A 125V	L5-20	2P/3W	HBL2311	HBL2313	HBL2310
20A 250V	L6-20	2P/3W	HBL2321	HBL2323	HBL2320
20A 3Ø 250V	L15-20	3P/4W	HBL2421	HBL2423	HBL2420
20A 3Ø 480V	L16-20	3P/4W	HBL2431	HBL2433	HBL2430
30A 3Ø 250V	L15-30	3P/4W	HBL2721	HBL2723	HBL2720
30A 3Ø 480V	L16-30	3P/4W	HBL2731	HBL2733	HBL2730

## HUBBCOM™ IP Devices

HUBBCOM™ IP Devices has a multi-functional design that will provide solutions for all your communication needs. It provides the ability to combine web application control, VoIP SIP telephone operation, overhead speaker broadcasts, and point-to-point server-less IP communication (audio and/or video).



### HUBBCOM IP Device Features:

- Point-to-point, serverless audio & video
- Overhead paging with intercom (soft zoning, multiple conference calls, serverless)
- SIP telephone option
- Access control option
- Web portal access (applications)
- 7-inch capacitive touchscreen
- Desktop or wall-mount with handset
- Intuitive operation
- 8 Ohm, 8W speaker output

### Applications:

- Common areas and public spaces
- Patient rooms
- Nurses' stations
- Offices and meeting spaces
- Data centers

## H3 Series Cabinets

Hubbell full size enclosures are for high density cabling requirements in data centers and telecommunication rooms. The H3 Series products have been designed to maximize air flow, support increased load capacity and provide easy access to cables. The H3 Series high quality construction allows for 3,000 pounds of equipment loading and each cabinet has two pairs of adjustable mounting rails that are rack unit numbered. Each unit comes with four casters installed and also features leveling feet to support the cabinet on any type of flooring. The perforation on the doors is compact, allowing ample airflow to cool equipment while the reinforced doors provide security.



### Network Cabinets

Rack Units	Height	Width	Depth	Rail	Catalog No.
42	76.6"	31.2"	43"	#12-24 threaded	H3N4242
			49"	#12-24 threaded	H3N4248
47	85.3"	31"	43"	#12-24 threaded	H3N4742
			49"	#12-24 threaded	H3N4748

**NEXTSPEED®  
Ascent Category 6A  
Patch Panels**

Hubbell's NEXTSPEED® Ascent Category 6A, Component-Compliant Patch Panels available in both straight and angled versions are the industry's fastest terminating patch panels. The patch panel's zero-crosstalk contact structure provides the highest performance while maintaining true balance to offer 10-Gigabit Ethernet application assurance with 4.5 dB near-end crosstalk margin over TIA-568-C component specifications at 500 MHz. The angled patch panel eliminates the need for horizontal cable management, while the straight versions are available in up to 96 ports in a 4RU footprint.



**NEXTSPEED® Ascent Category 6A Patch Panels**

Color	Width Inches (mm)	Height Inches (mm)	Ports	Rack Units	Catalog No.
Black	19" (483)	1.75" (45)	24	1	HP6A24
		3.50" (89)	48	2	HP6A48
		7.00" (178)	96	4	HP6A96
White	19" (483)	1.75" (45)	24	1	HP6A24W
		3.50" (89)	48	2	HP6A48W
		7.00" (178)	96	4	HP6A96W

Note: Versions without cable management bar available as HP6A24E and HP6A48E.

**Hubbell OptiChannel  
Rack Enclosures**

Ideal for data center and telecommunications spaces where proper cable management is critical to network performance, flexibility and scalability, Hubbell's OptiChannel Rack Mount Enclosures enhance the management capabilities of high-density fiber optic connections at the interconnect or cross-connect. With enhanced bend radius control, easy labeling and an inner splice tray with optimum slack storage, OptiChannel features a one-piece removable cover and magnetic door for easy use. They integrate seamlessly with a wide range of panel and cassette options and are available in 1 to 4U sizes to house anywhere from 72 to 360 LC fiber ports.



**High Density 144 Port 1U Enclosures**

Rack Units	Color	Height Inches (mm)	Width Inches (mm)	Depth Inches (mm)	Max LC Port Capacity	Catalog No.
1	Black	1.75" (44)	19" (483)	17" (432)	144	FCRHD1UBK
1	Gray	1.75" (44)	19" (483)	17" (432)	144	FCRHD1UGY

**Enhanced Rack Mounted Enclosures**

Rack Units	Height Inches (mm)	Width Inches (mm)	Depth Inches (mm)	FSP Panel Capacity	Splice Tray Capacity	Max LC Port Capacity	Catalog No.
1	1.75" (44)	17" (432)	17" (432)	3	2	72	FCR1U3SP
2	3.5" (89)	17" (432)	17" (432)	6	6	144	FCR2U6SP
3	5.25" (133)	17" (432)	17" (432)	12	12	288	FCR3U12SP
4	7.00" (178)	17" (432)	17" (432)	15	16	360	FCR4U15SP

**PAT750LI Battery Actuated  
Crimping Tool**

Burndy® PATRIOT 12-ton, c-head, hydraulic self-contained battery actuated crimping tool, 18v 3.0ah li-ion, 120V AC charger.

Refined hydraulic system for ultra performance, speed and reliability. Field proven electronics for ultimate reliability in the harshest environments. 5-year limited warranty, 3-year on batteries and charger, lifetime warranty on INFINITY DRIVE®.



**PAT750LI Features:**

- True one-handed operation for advance, retract, and hold
- 12 ton output force
- State of the art crimping head design, 360° head rotation
- Ergonomically balanced tool design
- Durable high-impact formed carrying case
- 5-year limited warranty on tool
- 3-year warranty on battery and charger

**Applications:**

- Common areas and public spaces
- Corridor and stairwells
- Patient rooms
- Nurses' stations
- Surgical suites
- Clinical laboratories
- Office and meeting space
- Data center

**Grounding and Bonding  
Systems**

The grounding network in any building is responsible for directing electricity, static noise and built up charges to an outside discharge away from people and equipment.

The grounding products featured here are designed around the ANSI-J-STD-607-B, Commercial Building, Grounding (Earthing) and Bonding requirements for telecommunications.

This standard specifies the requirements for a uniform telecommunications grounding and bonding infrastructure that shall be followed within commercial buildings where telecommunications equipment will be installed.



**Grounding and Bonding Systems**

Item	Description	Catalog No.
Compression Lugs	Long barrel with inspection window; available in 6 AWG up to 750 kcmil	YAZxxxx
Busbars	Copper or tin plated copper	BBBxxxx
Raised Floor Grounding Clamps	In parallel or grid mesh bonding applications	GPxxxx
Compression Taps	Copper C-Taps or tin plated copper H-Taps	YCxxxx

## BGRKTVC In-Cabinet Grounding Kit

BGRK grounding kits offer conveniently packaged components which simplify the decision making process at material acquisition and installation on the job site. These grounding kits bundle the same quality UL listed connectors with value-adding components such as: conductor, installation hardware, oxide inhibitor, labeling and installation instructions.

### Includes:

- 36" busbar
- Busbar hardware kit
- 60" #6 AWG conductor
- YAZ6C2TC14 HYDENT™ terminal (pre-crimped to conductor on one side)
- 8" Black Hook & Loop Cable Fastener (10 pieces)
- ESD Port Kit
- ESD Identification Label
- Additional Labeling
- 1/2 ounce PENETROX™ A oxide inhibitor



### Grounding Kit Features:

- Conveniently packaged for ease of procurement and installation
- Comprised of UL listed components
- Wire brush free when installed with telecom WEEB® washer
- TIA607 compliant

### Applications:

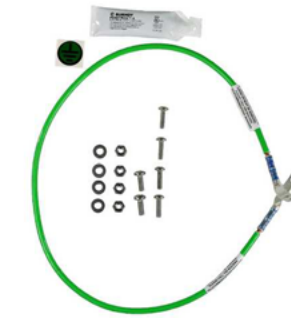
- Data centers

## BGRKTD30DN Ground Conductor/Jumper Kit

BGRK grounding kits offer conveniently packaged components which simplify the decision making process at material acquisition and installation on the job site. These grounding kits bundle the same quality UL listed connectors with value-adding components such as: conductor, installation hardware, oxide inhibitor, labeling and installation instructions.

### Includes:

- 30" #6 AWG conductor
- YAZ6C2TC14 HYDENT™ terminal pre-crimped to one end of conductor
- YAZ6C2TC1490 HYDENT™ terminal pre-crimped to the other end of conductor
- 1/2 ounce PENETROX™ A oxide inhibitor
- Hardware Kit
- Labeling



### Ground Conductor/Jumper Kit Features:

- Conveniently packaged for ease of procurement and installation
- Comprised of UL listed components
- Wire brush free when installed with telecom WEEB® washer
- TIA607 compliant

### Applications:

- Data centers

## BGRKTHC On-Rail Busbar Grounding Kit

BGRK grounding kits offer conveniently packaged components which simplify the decision making process at material acquisition and installation on the job site. These grounding kits bundle the same quality UL listed connectors with value-adding components such as: conductor, installation hardware, oxide inhibitor, labeling and installation instructions.

### Includes:

- 3/4" x 19" busbar
- Busbar hardware kit
- 60" #6 AWG conductor
- YAZ6C2TC14 HYDENT™ terminal (pre-crimped to conductor on one side)
- 8" Black Hook & Loop Cable Fastener (10 pieces)
- ESD Port Kit
- ESD Identification Label
- Additional Labeling
- 1/2 ounce PENETROX™ A oxide inhibitor



### On-Rail Busbar Grounding Kit Features:

- Conveniently packaged for ease of procurement and installation
- Comprised of UL listed components
- Wire brush free when installed with telecom WEEB® washer
- TIA607 compliant

### Applications:

- Data centers

## BGRKTD9D Ground Conductor/Jumper Kit

BGRK grounding kits offer conveniently packaged components which simplify the decision making process at material acquisition and installation on the job site. These grounding kits bundle the same quality UL listed connectors with value-adding components such as: conductor, installation hardware, oxide inhibitor, labeling and installation instructions.

### Includes:

- 9" #6 AWG conductor
- YAZ6C2TC14 HYDENT™ terminals pre-crimped to each end of conductor
- 1/2 ounce PENETROX™ A oxide inhibitor
- Hardware Kit
- Labels for conductor
- Ground Symbol Label



### Ground Conductor/Jumper Kit Features:

- Conveniently packaged for ease of procurement and installation
- Comprised of UL listed components
- Wire brush free when installed with telecom WEEB® washer
- TIA607 compliant

### Applications:

- Data centers

## BGRKTWB5 Ground Conductor/Jumper Kit

BGRK grounding kits offer conveniently packaged components which simplify the decision making process at material acquisition and installation on the job site. These grounding kits bundle the same quality UL listed connectors with value-adding components such as: conductor, installation hardware, oxide inhibitor, labeling and installation instructions.

### Includes:

- 9" #6 AWG Conductor (5 pieces)
- KS23 SERVIT® split bolt connectors (10 pieces)
- Ground wire labeling (5 pieces)
- Ground symbol labeling (5 pieces)



### Ground Conductor/Jumper Kit Features:

- Conveniently packaged for ease of procurement and installation
- Comprised of UL listed components
- Wire brush free when installed with telecom WEEB® washer
- TIA607 compliant

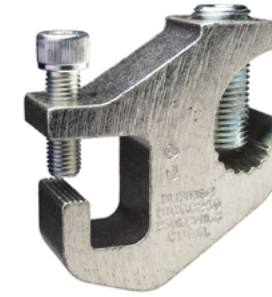
### Applications:

- Data centers

## Type BTCGC Cable Tray Clamp

Cable Tray Clamp for Copper or Aluminum Conductor to Aluminum or Steel Cable Tray. Made of aluminum and tin plated, the BTCGC cable tray clamp accommodates aluminum or copper conductor #6 AWG through 250 kcmil. Suitable for indoor applications, the BTCGC clamp may be used with most types of cable tray with an inside or outside flange design.

Quick and easy installation requiring no drilling or special tools; use with 1/2" maximum straight rail, aluminum and steel cable trays. Tin plated for durability and corrosion resistance. UL Listed for Grounding and Bonding; CSA 22.2 NO. 41 for Grounding and Bonding.



### Clamp Features:

- Accepts rail thickness up to 1/2"
- Conductor range from #6 to 250 kcmil
- Installs with 1/4" Hex Key
- Installation Torque 275 in-lb

### Applications:

- Healthcare
- Data Centers
- Telecommunications
- Renewable Energy
- Petrochem
- Utilities
- Industrial Manufacturing

## WEEB® Two Hole Telecom Washer

The Telecom WEEB® Washer design utilizes patented WEEB® Washer teeth eliminating the need to remove nonconductive coatings (e.g. anodization and powder coat) when making bonding connections. The teeth pierce through most nonconductive coatings and embed into the underlying metal creating a bonding connection between the lug and the coated metal component that it is installed on (e.g. equipment racks, cabinets, enclosures, cable tray, etc.).



### Two Hole Telecom Washer Features:

- Made from corrosion resistant 304 stainless steel for outstanding durability and performance
- Eliminates the need for surface preparation and oxide inhibitor
- Detailed manual specifying proper hardware, torque, and mounting information is available upon request
- UL 467 Recognized for grounding and bonding equipment

### Applications:

- Equipment bonding
- Power connections
- Grounding and bonding
- Solar PV system
- Electrical connections

## Wire Basket Tray

For superior protection and management of electrical power or data communications cabling, Hubbell's Wire Basket Tray is field adaptable and easily installed overhead, on walls or under floors using various brackets and supports. Hubbell Wire Basket Tray is made of 100% domestic recycled steel and features a T-weld edge that protects both the installer and the cable from sharp points and a flat-shaped profile that reduces stress points to prevent degrading cabling performance. Available in black, pewter, stainless steel type 304 and 316, pre-galvanized steel and electro-zinc plating, Hubbell Wire Basket Tray is extremely flexible and installs faster than conduit systems while offering increased capacity.

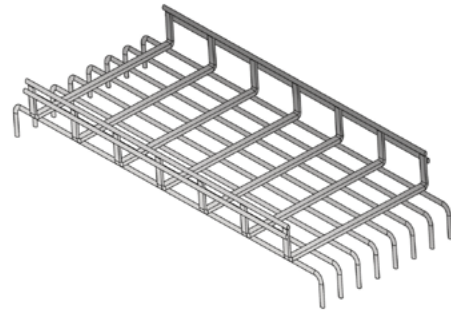


### Flat Style Wire Basket Trays

Width x Length Inches (mm)	2" (51mm) Round		6" (51mm) Round	
	Pre-Galvanized	Black	Pre-Galvanized	Black
4" (102) x 118" (3000)	HBT0204S	HBT0204SBK	-	-
6" (152) x 118" (3000)	HBT0206S	HBT0206SBK	-	-
8" (203) x 118" (3000)	HBT0208S	HBT0208SBK	HBT0608S	HBT0608SBK
12" (305) x 118" (3000)	HBT0212S	HBT0212SBK	HBT0612S	HBT0612SBK
16" (406) x 118" (3000)	HBT0216S	HBT0216SBK	HBT0616S	HBT0616SBK
18" (457) x 118" (3000)	HBT0218S	HBT0218SBK	HBT0618S	HBT0618SBK
20" (508) x 118" (3000)	HBT0220S	HBT0220SBK	HBT0620S	HBT0620SBK

**Under Floor Wire Basket Tray**

Hubbell's wire basket system meets specific requirements for commercial controlled interior environments and data centers. Wire basket systems help save labor and minimize waste, while reducing impact to the environment. The painted, masked version reduced on-site paint removal, saving time and money. The raised access floor system ships as a complete unit, eliminating the need to locate and assemble components. Hubbell wire basket systems are available in overhead and raised floor applications. Both systems are UL classified as equipment ground conductor, provided they are installed and spliced according to recommended instructions.



**Under Floor Wire Basket Tray Features:**

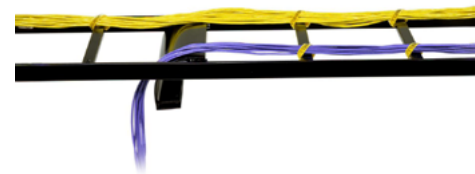
- T-weld construction prevents snags
- 5mm round wire on smaller sizes
- High load rating
- 100% recycled steel
- Use factory support hardware or fabricate supports on the job site
- 2" x 4" mesh opening
- Painted tray includes factory installed masking to assure proper grounding at splices; no need to remove paint during installation

**Applications:**

- Data centers

**NEXTRFRAME® Ladder Tray**

Hubbell's NEXTRFRAME® ladder tray is an effective cable runway that supports and delivers bundles of copper and fiber cables between cabinets, racks and closets, along walls and suspended from ceilings. This lightweight system features rugged, tubular steel construction that provides the mechanical support, strain relief and smooth gradual bend needed to protect cables and maintain their performance. Hubbell ladder tray features a durable black or gray powder coat finish and a broad range of sizes and fitting for proper installation, including wall supports and brackets, cable drops, retaining posts, splice kits and ceiling mount kits.



**NEXTRFRAME® Ladder Tray Features:**

- HLS Ladder Tray is a modular system that is easily configured for all unique installations
- Ladder tray sections universally work with all ladder tray accessories
- HLS Ladder feature rung spacing every 9" to support and relieve cable stress

**Applications:**

- Data centers

**General Purpose Dry-Type Distribution Transformers**

General purpose dry-type distribution transformers. Extra large front access wiring compartment through 9 kVA; top access through 75 kVA for easier installation and cooler case temperatures. Completely enclosed—suitable for indoor/outdoor service. Excellent for dust or lint laden atmosphere. Encapsulated—electrical grade silica and resin compound completely encloses the core and coil. Encapsulation seals out all moisture and air, eliminating corrosion and insulation deterioration.



**Distribution Transformers Features:**

- Quiet operation with sound levels below NEMA standards
- Electrostatic shield for enhanced protection
- Optional weather shield - WSA1
- UL Class 180°C insulation system. 115°C rise
- High efficiency and excellent regulation

**Applications:**

- Engineering
- Parking and exterior

# Engineering



## LLHV - VersaBay® LED High Bay

VersaBay® LED combines powerful, high light output LED technology with remarkable energy savings for a quick return on investment. LLHV offers six lumen packages suitable for replacement of 150W to 1,000W HID. With 60,000 hour L80 life (projected over 100,000 hours).

**Columbia**  
LIGHTING



### LLHV Features:

- Optical design provides one-for-one replacement of metal halide and fluorescent high bays with substantial energy savings
- High efficacy LEDs provide up to 158 Lumens Per Watt
- Available in narrow or wide distribution
- Easy center driver cover allows tool-less access to electrical components for modular replaceability
- Quick and simple hanging systems include chain, tong or aircraft cable mounting
- Access cover in channel for easy wiring access
- "Plug and play" occupancy sensor, daylight sensor, cord and plug
- Wire guard and/or lens option

### Applications:

- Maintenance
- Warehouses
- Manufacturing
- Gymnasiums
- Convention centers
- Large, open commercial spaces

## SE Series

Exit sign construction is of high-strength cast aluminum in a choice of textured white, white with brushed face, black or black with brushed face finish.

**DUAL LITE**®



### SE Series Features:

- High-strength cast aluminum
- Long-life LED lamps
- Red or green letter models
- Universal single/double face
- White, black and black or white with brushed face finishes
- Universal end/ceiling/wall mounting
- Damp location

### Applications:

- Conditioned space

EV Series

The EV Series is a compact architectural emergency lighting unit designed for fast wall mount installation and reliable service. The EV unit is available with or without remote capacity. The EV series includes the EVR 2-head LED indoor remote, and the EVO – single or double-head outdoor remote as an accessory.



EV Series Features:

- Standard EV model has 20' spacing, optional -02L model increases spacing to 33' on a 6' path
- High impact, flame rated and UV stable white thermoplastic housing
- The EV series includes the EVR 2-head LED remote as an accessory
- Fully adjustable high output LED lamp-heads
- Environmentally-friendly nickel metal hydride battery
- Top mount conduit entry
- Damp location

Applications:

- Conditioned space

LSN D Series Inverter

The LSN D Series central lighting inverter provides a centralized solution to emergency lighting and power back-up with a wide array of options designed to minimize maintenance requirements and optimize emergency lighting performance. Designed for indoor installation in commercial or industrial applications for use with LED, fluorescent, compact fluorescent, incandescent and HID lamp loads up to 17.5kVA/kW.



LSN D Series Inverter Features:

- Uninterruptible emergency AC power system
- "No break" design transfers the load instantaneously when normal power is interrupted
- 90 minute emergency operation supplied standard
- Single-phase
- Input Voltage: 120VAC, 208VAC, 240VAC, 277VAC or 347VAC
- Output Voltage: 120VAC, 240VAC, 120/208VAC, 120/240VAC, 120/277VAC, 277 VAC or 347VAC 60 Hz operation
- Sizes available from 1.0 KVA/KW through 17.5 KVA/KW

Applications:

- Healthcare
- Industrial manufacturing
- Education
- Entertainment
- Institutional
- Hospitality

Manual Motor Controllers

Enhance safety and increase your confidence with Hubbell's motor controllers and disconnects. Because our Circuit-Lock motor controllers are also disconnects, you get the safety, flexibility, compliance and productivity you need for industrial applications and motor controls. Hubbell motor control devices are also available for use with Hubbell LINKOSITY® modular plug-and-play power distribution system.



Manual Motor Controllers

Description	Double Pole	Three Pole
30A motor controller	HBL7832D	HBL7810D
In Type 1 enclosure; non-metallic cover	HBL1392D	HBL1389D
In metal Type 1 enclosure	HBL1372D	HBL1379D
In NEMA 3R non-metallic enclosure	HBL13R22D	HBL13R23D
In metal Type 3R enclosure	HBL13R92D	HBL13R89D
In NEMA 3R flip lid enclosure	HBL13R12D	HBL13R13D
60A motor controller	HBL7862D	HBL7863D

Heavy Duty Pendant Pushbutton Stations

Suitable for the toughest environments, Hubbell's Heavy-Duty Pendant Pushbutton Stations are used to control circuit operation of electric motor hoists and other machinery. With high-impact resistance and a sealing ring that shuts out dust and moisture, the enclosure is ideal for any high-use industrial application. A mechanical interlock feature prevents simultaneous activation of both buttons. Pendant pushbutton stations are available in single or two speed, with two-, four-, six-, or eight-button configurations.



PBS Series Heavy Duty Pendant Pushbutton Stations, NEMA 3R

Description	Catalog No.
2 button, single speed	PBS2
2 button, two speed	PBS22
4 button, single speed	PBS4
4 button, two speed	PBS42
6 button, single speed	PBS6
6 button, two speed	PBS62
8 button, single speed	PBS8
8 button, two speed	PBS82

CPB2 Series Compact Pendant Stations, Two Button, NEMA 4

Description	Catalog No.
Single-speed normally open normally closed without mechanical interlock	CPB20
Single-speed with mechanical interlock between pushbuttons	CPB21
Two-speed with mechanical interlock between pushbuttons	CPB22

## Kellems® Support Grips

Kellems® Support Grips from Hubbell hold the weight of a variety of cables as they hang in vertical, sloping or horizontal positions, preventing excessive strain or pullout at the connections that can result in a power failure. Available in light, standard and heavy duty, Kellems Support Grips feature a strand equalizer that positions the cable for equal loading throughout the entire grip for maximum performance and reliability. Kellems support grips also absorb strain from flexing, vibration, and expansion and contraction. They are available in four eye styles, including single, double, universal and offset.



### Support Grips

Cable Diameter Range Inches (cm)	Offset Eye Closed Mesh	Offset Eye Split Mesh Rod Closing	Universal Eye Closed Mesh	Universal Eye Split Mesh Rod Closing	Double Eye Closed Mesh
.75"- .99" (1.90-2.51)	2201039	2203039	2201053	2203064	2206001
1.00"-1.24" (2.54-3.15)	2201041	2203041	2201050	2203068	2206002
1.25"-1.49" (3.17-3.78)	2201042	2203042	2201054	2203069	2206003
1.50"-1.74" (3.81-4.42)	2201043	2203043	2201055	2203070	2206004
1.75"-1.99" (4.44-5.05)	2201044	2203044	2201056	2203071	-
2.00"-2.49" (5.08-6.32)	2201045	2203045	2201057	2203072	2206005
2.50"-2.99" (6.35-7.59)	2201046	2203046	2201058	2203073	2206006

Additional sizes and styles available.

## Hubbell Twist-Lock® Locking Devices

Hubbell Twist-Lock devices, available in 15, 20, and 3 Amp, are the industry standard for locking plugs and receptacles. The plug and connector feature a powerful cord grip that clamps the conductors, not just the cable jacket, making it the most powerful cord grip in the industry. The tough ribbed nylon housing provides secure gripping while ensuring impact and corrosion resistance. An individually molded face for each blade configuration keeps debris out of the plug while the dust shield provides additional protection from contamination. Hubbell also offers a variety of Twist-Lock receptacles that combine functional design and features for secure and easy mating. Only Twist-Lock delivers premium service and longer life while keeping electrical connections connected.

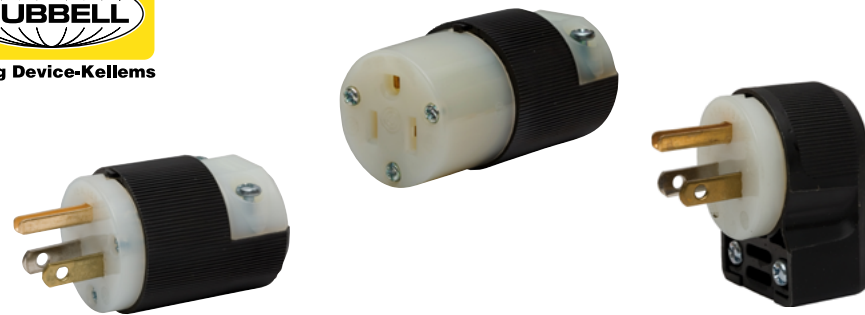


### Hubbell Twist-Lock® Locking Devices

NEMA Rating	Color Coded by Voltage	Poles/Wires	Plug	Connector	Receptacle
15A 125V	L5-15	2P/3W	HBL4720C	HBL4729C	HBL4710
20A 125V	L5-20	2P/3W	HBL2311	HBL2313	HBL2310
20A 250V	L6-20	2P/3W	HBL2321	HBL2323	HBL2320
20A 3Ø 250V	L15-20	3P/4W	HBL2421	HBL2423	HBL2420
20A 3Ø 480V	L16-20	3P/4W	HBL2431	HBL2433	HBL2430
30A 3Ø 250V	L15-30	3P/4W	HBL2721	HBL2723	HBL2720
30A 3Ø 480V	L16-30	3P/4W	HBL2731	HBL2733	HBL2730

## Hubbell Insulgrip® 15 and 20 Amp Straight Blade Devices

Another Hubbell innovation that has become an industry standard, Insulgrip plugs and connectors meet a wide range of commercial and heavy-duty applications ranging from 15 to 200 Amps. Encased in tough nylon, Insulgrip devices ensure high impact, heat and chemical resistance while insulating current-carrying components from the user for maximum safety. Hubbell has designed Insulgrip plugs and connectors with an individually molded face to keep out dust and debris and a powerful cord gripping design for superior strain relief. Whether connecting mobile medical equipment or food preparation equipment, Insulgrip devices last longer and provide better safety and reliability.



### Hubbell Insulgrip® 15 and 20 Amp Straight Blade Devices

NEMA Rating	Poles/Wires	Description	Plug	Angled Plug	Connector
15A 125V	5-15	2-Pole 3-Wire Impact Resistant Nylon	HBL5266C	HBL5266CA	HBL5269C
20A 125V	5-20	2-Pole 3-Wire Impact Resistant Nylon	HBL5366C	HBL5366CA	HBL5369C
15A 250V	6-15	2-Pole 3-Wire Black and White Nylon	HBL5666C	HBL5666CA	HBL5669C
20A 250V	6-20	2-Pole 3-Wire Black and White Nylon	HBL5466C	HBL5466CA	HBL5469C

## SP2 PoE / PoE+ Indoor Handset Station

The SP2 with Power over Ethernet (PoE/ PoE+) operation is one of GAI-Tronics' most advanced paging and intercom systems. Combining the simplicity of "press to page, release to party" operation with cutting-edge multicast Voice over Internet Protocol (VoIP) technology, SP2 is capable of providing virtually instant communication in the most demanding of environment.



### Handset Station Features:

- Multicast VoIP technology
- Serverless technology
- Full duplex communication
- Five party lines
- PoE or PoE+ operation
- Efficient 30 watt Class D amplifier
- Ambient Level Sensing (ALS)
- Remote Terminal Unit (RTU) operation for input/output applications
- Remote monitoring
- CAT5/5E network connection
- Indoor mounting

### Applications:

- Engineering



## Heavy Duty Hose Reels

Gleason Reels' heavy duty hose reels are designed for supplying air or fluid to machines in applications where the machine supplies the power to pull out the hose and the reel supplies the rewinding power. They are also widely used overhead where the hose is pulled down by hand. In hand pull applications, a ratchet lock is usually employed to keep the hose extended while in use.



### Hose Reel Features:

- Multi-position four roller guide and adjustable hose stop included
- Weatherproof gasket on spring motor
- Positive ratchet lock with disengage
- Rugged steel construction; baked polyester finish
- All welded solid steel construction
- Optional 340° pivot base

### Applications:

- Engineering
- Parking and exterior

## Industrial Power Cord Reels

Cord reels provide point-of-use power in a variety of maintenance environments—from shops and garages, to outdoor spaces.

Hubbell Power Cord Reels are powder coated with solid-steel construction and a UL Type 4X enclosure that protects the motor, junction box, slip ring assembly and cable entrance from weather, hose down and corrosion. Available in 15 and 20 Amp versions, Power Cord Reels feature a multi-position roller guide that can be mounted in four different positions and an optional 340-degree pivot base to deliver power in any direction.



### Industrial Power Cord Reels

Cord End	Cable Feet (m)	Cable Type	NEMA Style	Amps	Volts AC	Weight Lbs. (kg)	Catalog Number
Without cord ends.	45 (13.7)	12/3 SJEO	5-15R	15	125	21 (9.5)	HBL45123
HBL5269C connector.	45 (13.7)	12/3 SJEO	5-15R	15	125	28 (12.7)	HBL45123C
HBL5369C connector.	45 (13.7)	12/3 SJEO	5-20R	20	125	28 (12.7)	HBL45123C20
HBL2313 connector.	45 (13.7)	12/3 SJEO	L5-20R	20	125	28 (12.7)	HBL45123TL20
Portable outlet box with (2) gray duplex receptacle.	45 (13.7)	12/3 SJEO	5-20R	20	125	29 (13.2)	HBL45123R220
Portable outlet box with (1) ground fault protected gray duplex receptacle.	45 (13.7)	12/3 SJEO	5-15R	15	125	29 (13.2)	HBL45123GF15
	45 (13.7)	12/3 SJEO	5-20R	20	125	29 (13.2)	HBL45123GF20

## Heavy Duty Tool Balancers

Gleason Reels' heavy duty 'BG' series tool balancers feature rugged steel construction with black polyester baked finish, reinforced hanging bracket with forged clevis for ceiling mounting and extra holes for safety chain attachment. Spring is permanently lubricated and provides constant tension, adjustable for balancing tool in normal working zone.



### Tool Balancer Features:

- Rugged steel construction with black polyester baked finish
- Reinforced hanging bracket with forged clevis for ceiling mounting and extra holes for safety chain attachment
- Spring is permanently lubricated. Includes safety tool clip and adjustable cable stop

### Applications:

- Engineering

## General Purpose Dry-Type Distribution Transformers

General purpose dry-type distribution transformers. Extra large front access wiring compartment through 9 kVA; top access through 75 kVA for easier installation and cooler case temperatures. Completely enclosed—suitable for indoor/outdoor service. Excellent for dust or lint laden atmosphere. Encapsulated—electrical grade silica and resin compound completely encloses the core and coil. Encapsulation seals out all moisture and air, eliminating corrosion and insulation deterioration.



### Distribution Transformers Features:

- Quiet operation with sound levels below NEMA standards
- Electrostatic shield for enhanced protection
- Optional weather shield - WSA1
- UL Class 180°C insulation system. 115°C rise
- High efficiency and excellent regulation

### Applications:

- Engineering
- Parking and exterior

## Enclosures & Boxes

### NEMA 4X JIC Continuous Hinge Electrical Enclosure

Wiegmann NEMA 4X JIC Continuous Hinge Quarter Turn 12X12X6 304 Stainless Steel.

The Ultimate Mini-Max series enclosures are designed to house and protect electrical and electronic components in harsh, dirty environments. Streamlined styling, quarter-turn latch, and attractive durable finish complement any high tech electronic equipment.

**WIEGMANN**



#### NEMA 4X JIC Enclosure Features:

- 1/4 turn style JIC enclosure makes for easy door seal
- Eliminates the need for exterior clips to secure door shut
- 1/4 turn latch is interchangeable with many locking designs available to better suit the customer
- FTC flange around the entire door opening to channel liquids away
- Available in light grained finish 304 or 316 stainless steel

#### Applications:

- Medical grounds
- Parking garages
- Food services

## Fire Pump Controller

### Soft Start Fire Pump Controller

The MPT700 Pilot Series Soft Start Fire Pump Controllers utilize a solid state motor controller. The motor voltage is raised to an adjustable initial torque value. The motor voltage is gradually increased during the acceleration ramp time, max. of 10 seconds per NFPA 20. After a minimum run time and all starting causes have returned to normal, the controller will initiate a ramp down process by smoothly decelerating the motor at an adjustable rate to a stop. This smooth acceleration/deceleration of the motor reduces surges and water hammer in the sprinkler system. In-rush current can be adjusted as low as 25%.



#### Fire Pump Controller Features:

- Large 7" color LCD touch screen
- Simultaneous display on Home screen for 3 phase amperage/voltage, system pressure, start pressure, stop pressure, system status, alarm status, date and time
- On-screen Icons for Pilot/Quick Start, System Set Points, User Settings, Data Log, Diagnostics, and others for ease of installation and data log/event history retrieval
- Conforms to requirements of NFPA 20, UL 218 and FM 1321/1323

#### Applications:

- Fire pump room



# Parking & Exterior (Indoor)



## SE Series

Exit sign construction is of high-strength cast aluminum in a choice of textured white, white with brushed face, black or black with brushed face finish.



### SE Series Features:

- High-strength cast aluminum
- Long-life LED lamps
- Red or green letter models
- Universal single/double face
- White, black and black or white with brushed face finishes
- Universal end/ceiling/wall mounting
- Damp location

### Applications:

- Conditioned space

## PGL8 Family

The legacy of the PGL continues with the PGL8 Edge-Lit with Drop Lens. The PGL8 provides effective solutions for meeting the dynamics and challenges of parking garage applications including IES recommendations. The drop lens reduces glare providing exceptional visual comfort and performance, making the PGL8 the ideal solution for parking garage and canopy applications.



### PGL8 Family Features:

- Patent pending edge-lit, drop lens optic
- Uplight standard with no additional wattage consumption
- The PGL8 offers exceptional uniformity and visual comfort with four standard distribution patterns
- Pendant mount with architectural bird shroud
- Integral sensors, battery backup and uplight
- Wireless control options: NX Distributed Intelligence™, wiSCAPE™

### Applications:

- Parking garages

## NX Distributed Intelligence™

Hubbell Control Solutions' NX Distributed Intelligence platform delivers a seamless lighting control solution. NX is capable of scaling from standalone fixture and room control applications to networked enterprise deployments. NX operates using wired, wireless and hybrid connectivity with native BACnet® support.

NX portfolio of compatible products provides the flexibility to easily scale from a single fixture to a complete building using a broad selection of multi-tiered control strategies.



### NX Distributed Intelligence Features:

- Multiple deployment options: wired, wireless and hybrid
- For indoor and outdoor applications
- Native BACnet support
- Supports Hubbell Lighting's SpectraSync™ Color Tuning Technology
- Ease of implementation with self-configuration feature and mobile app tool

### Applications:

- General indoor and outdoor

## Hubbell 50A Twist-Lock® Locking Devices

Hubbell's 50 amp Twist-Lock® devices features heavy-duty design built for heavy-duty applications. These Hubbell 50 amp Twist-Lock plugs and connector bodies are built to go where you need power, even in some of the harshest environments.

On the outside, 50 amp plugs and connectors are made of super tough nylon for better impact resistance. On the plug, the stainless steel shroud not only provides protection and durability, but safety as well. That's because the rigid construction restricts distortion, thus minimizing the possibility of mating incorrect devices.

On the inside are the kinds of features that separate Hubbell from all the rest. The cord grip has been designed with offset gripping jaws to securely hold the conductors — not just the cord jacket. Hubbell's box terminals speed wiring and provide a superior termination. The plug's thermoplastic polyester interior provides excellent heat resistance without compromising strength.



### 50 Amp Twist-Lock® Devices

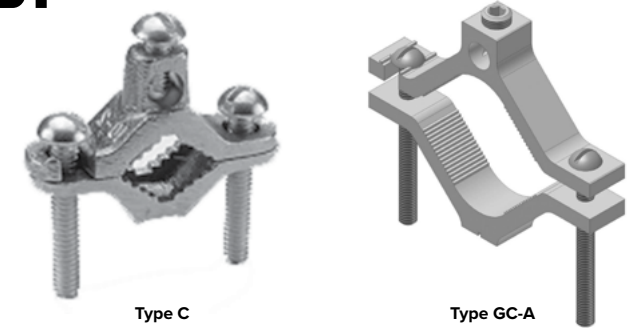
NEMA Rating	Plug	Flanged Inlet	Connector	Receptacles
50A 125V	CS6361C	CS6377	CS6360C	CS6370
50A 250V	CS8265C	CS8275	CS8264C	CS8269
50A 480V	CS8465C	CS8475	CS8464C	CS8469*
50A 125/250V	CS6365C	CS6375 CS6375M2	CS6364C	CS6369
50A 3Ø 250V	CS8365C	CS8375	CS8364C	CS8369

\* with lift cover

## Ground Conductor to Water Pipe, Pipe or Conduit

Type C- Cast Bronze Clamps For connecting grounding conductor to water pipe or copper tube. "D" indicates UL 467 Listed for direct burial in earth and concrete and are supplied with silicon bronze hardware.

Type GC-A ground clamps are UL Listed for use with either copper or aluminum conductors to copper water pipe, galvanized pipe, or steel conduit. All clamps are constructed from tin plated high-strength extruded aluminum alloy.



### Connector Features:

- Type GC-A:
- Clamps are dual rated for both copper and aluminum conductors providing maximum flexibility of application
- All connectors are tin plated to provide low contact resistance and prevent galvanic corrosion
- All clamps are range taking; only 3 catalog number covers the complete range of applications from 1/2 to 4 inches

### Applications:

- Pipe Grounding

## Type GCS; The CONSTRICTOR™

The Type GCS connector is used to ground cable to steel in applications where drilling is either not possible or unwanted. Installation of the Type GCS connector requires no power tools and is suitable for all applications particularly where power equipment of any kind is not allowed. The CONSTRICTOR™ GCS series of ground connectors are cULus Listed for Grounding and Bonding.



### The CONSTRICTOR™ Features:

- cULus for Grounding and Bonding; Direct Burial rated for installation into earth and concrete
- Accepts beam thickness: .125-.625" (1/8 to 5/8")
- Conductor range from #6 to 2/0
- Versatile; allows parallel or perpendicular conductor orientation
- Stainless steel hardware
- 5/32" Allen cup point screw penetrates coatings on steel
- No special tooling required
- Applicable for use in "extremely volatile environments"

### Applications:

- Healthcare
- Data Centers
- Telecommunications
- Renewable Energy
- Petrochem
- Utilities
- Industrial Manufacturing

## Emergency Communication Station

GAI-TRONICS' Wall-Mount Stanchion provides a complete communications package in a self-contained, easy to install assembly (stanchion body, telephone, interior light kit and LED strobe all sold separately). The aluminum stanchion body resists corrosion and is painted safety yellow for ease of location. The blue strobe is bright enough to see during daylight hours. Custom colors and graphics available.



Model #398-001  
Emergency Telephone



Model #234WM-202  
Wall-Mount Stanchion



Model #540-001  
LED Strobe

### Emergency Communication Station Features:

- Wall-Mount Stanchion, aluminum, yellow, powder epoxy paint, EMERGENCY graphics (model #234WM-202)
- RED ALERT Emergency Telephone, help, autodial push button, call push button with keypad (model # 398-001)
- LED blue strobe with constant-on feature (model #540-001)
- Interior Lighting Kit (model #203-003)

### Applications:

- Medical grounds
- Parking garages

## 600 Series Trench Drain

Polycast drains offer a high degree of chemical resistance and have a water absorption value of less than one percent (ASTM C140). Made of a high strength, chemical resistant, composite material.

Polycast Polymer Concrete is more than four times stronger than ordinary Portland Cement Concrete, simplifies installation and lowers overall costs. Ideal for indoor and outdoor applications. Rapid drainage and durability. Resistant to freeze/thaw cycles (ASTM C666). Offers superior versatility with 24" and 48" components.



### 600 Series Trench Drain Features:

- Variable 9–14" bolt circle
- 4 slots, 1" diameter x 4" long
- 6-5/8" OD x 60" long
- 1" thick x 12" square base plate, variable circle
- Hardware included

### Applications:

- Healthcare
- Parking decks
- Vehicle maintenance

## Weatherproof Electrical Box

1-gang Weatherproof Electrical Box features 3 threaded 1/2" outlets



### Weatherproof Electrical Box Features:

- Rugged die-cast aluminum construction
- Powder coat finish for maximum weatherability and scratch resistance
- Eight box mounting options with detachable lugs
- Includes two 1/2" closure plugs
- NEMA compliant internal hub threads accept all threaded fittings and threaded conduit
- Ground screw installed

### Applications:

- Building exteriors
- Rooftop
- Parking

## MX7200 2-gang In-Use Weatherproof Cover

TayMac Jumbo 2-Gang EXTRA DUTY Weatherproof In-Use Cover is designed to provide weatherproof protection while an outlet is in-use.



### MX7200 Features:

- Heavy duty die-cast metal construction with premium powder coat finish
- Quick-Fit keyhole mounting system allows installation in under a minute
- Universal Fit Adapter System Technology (U-Fast) for 55-in-1 custom device configurations
- Comes pre-configured for GFCI
- Includes attached gasket and mounting hardware
- Jumbo size, 5-1/8" deep
- Lockable tab
- Extra Duty rated
- Vertical mount

### Applications:

- Building exteriors
- Rooftop
- Parking

## Enclosures & Boxes

### NEMA 4X JIC Continuous Hinge Electrical Enclosure

Wiegmann NEMA 4X JIC Continuous Hinge Quarter Turn 12X12X6 304 Stainless Steel.

The Ultimate Mini-Max series enclosures are designed to house and protect electrical and electronic components in harsh, dirty environments. Streamlined styling, quarter-turn latch, and attractive durable finish complement any high tech electronic equipment.

**WIEGMANN**



#### NEMA 4X JIC Enclosure Features:

- 1/4 turn style JIC enclosure makes for easy door seal
- Eliminates the need for exterior clips to secure door shut
- 1/4 turn latch is interchangeable with many locking designs available to better suit the customer
- FTC flange around the entire door opening to channel liquids away
- Available in light grained finish 304 or 316 stainless steel

#### Applications:

- Medical grounds
- Parking garages
- Food services

## Electric Vehicle Charging

### Electric Vehicle (EV) Charging Station

With a variety of features that offer fast, easy, and convenient charging, Hubbell's Electric Vehicle Charging Station complies with all industry standards for electric vehicle supply equipment (EVSE), meets all safety requirements, and is compatible with all major auto manufacturers' electric vehicles with standard SAE J1772™ electrical connectors.

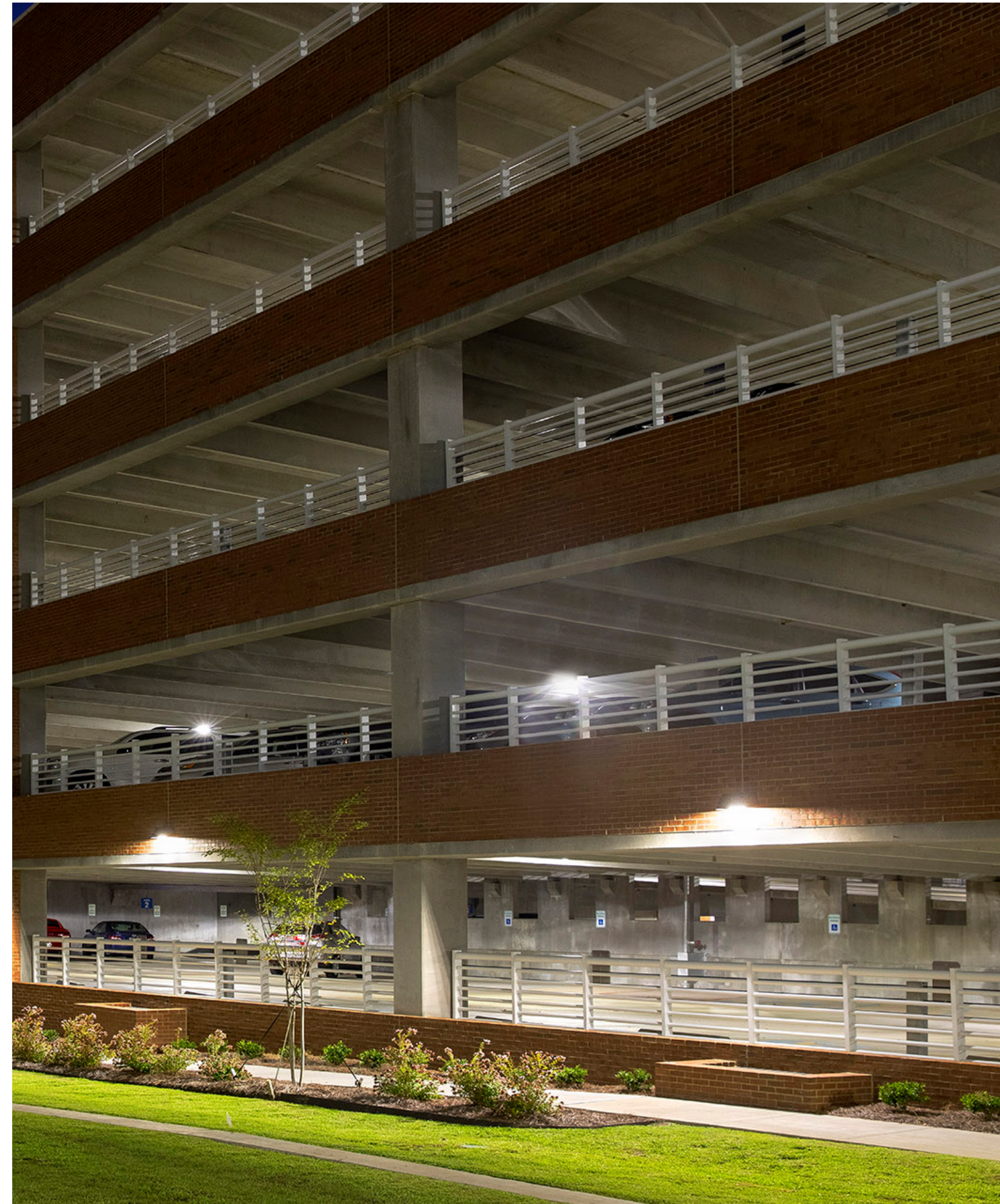
The charging station features a ground monitor interrupter circuit and overtemperature protection — both important safety features that disable electric vehicle charging in the event of loss of ground or an over-temperature condition. A time-delay feature allows users to delay charge times to take advantage of economical charging rates.

Constructed of durable cast aluminum with a water-resistant enclosure, Hubbell's 30A Electric Vehicle Charging Station is ideal for indoor or outdoor use. Its compact size allows for hassle-free installation in small spaces.



#### Electric Vehicle (EV) Charging Station

Description	Catalog Number
EV Charging Station, 208-240V AC, 7.2 kW output, 20 ft. charging cable	HBLEV30B
EV Charging Station, 208-240V AC, 7.2 kW output, 20 ft. charging cable, hardwired	HBLEV30BHW



# Parking & Exterior (Outdoor)



## Pursuit Linear Outdoor

The Pursuit family of linear outdoor light fixtures feature a low profile linear form factor that seamlessly blends with the architecture—day or night. Individual housing lengths can be connected with external lens for seamless and continuous runs up to 150'.



### Pursuit Linear Outdoor Features:

- IP66 rated for demanding environments including protection from dust, oil, noncorrosive material and water intrusion
- Five housing lengths and three housing options
- Four distributions and four lumen outputs up to 1,500 lm/ft
- Mounting flexibility adjustable arm, fixed arm, cable, pendant, surface, wall, mullion

### Applications:

- Exterior and parking structure

## Viper Large Strike Optic

The Large Viper luminaire is available with a wide choice of different LED wattage configurations and optical distributions designed to replace HID lighting up to 1000W MH or HPS. 4 different mounting options allow for application in a wide variety of new and existing installations.



### Viper Large Features:

- 8 lighting distributions puts light where it is needed, not wasted
- 4 mounting options
- 5 wattages from 135W thru 395W of LED efficiency
- Lifeshield thermal circuit protection insures optimum LED performance
- DLC® (DesignLights Consortium) Qualified —see [www.designlights.org](http://www.designlights.org)

### Applications:

- Parking areas
- Architectural outdoor area/site applications
- Pedestrian walkway applications

TRP2 GeoPak

Mid sized architectural wallpacks in three stylish shapes with molded contours to accentuate building architecture. Provides excellent illumination in energy-saving LED systems.



**TRP2 GeoPak Features:**

- Type I, II, III and IV distributions for a wide variety of applications
- Low glare asymmetric optics for optimal performance and visual comfort
- Easy to install and retrofit existing HID luminaires with similar footprint
- Control capabilities offer additional energy savings options
- Integral battery backup options
- Option uplight graze, spot and canopy distributions

**Applications:**

- Building mount applications
- Egress
- Facade

Pavilion Family

Pavilion redefines the bollard category with state of the art design, performance, and technology. An integral NEMA 3R enclosure, 2-Gang recessed box, and Bluetooth® RGBW accent are just a few of the industry first features of Pavilion.



**Pavilion Family Features:**

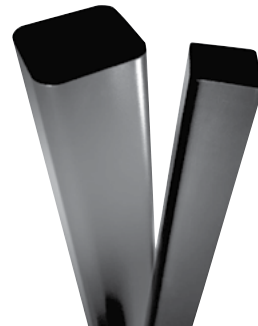
- U0, True IES, or diffused symmetric or asymmetric distributions
- Optional Bluetooth enabled RGBW color luminous accent
- SiteSync wireless control and motion sensor options
- Battery backup configurations
- Integral Power Station functionality enables optional electrical and USB charging, speaker integration or even a disabled person's actuator button

**Applications:**

- Pathways
- Wayfinding
- Plazas
- Courtyards

SSS-H

Square Straight Steel Poles



**SSS-H Features:**

- Base cover: two-piece square aluminum base cover included standard
- Pole cap: Pole shaft supplied with removable cover when applicable; Tenon and post-top configurations also available
- Hand hole: Rectangular 3x5 steel hand hole frame (2.38" x 4.38" opening); Mounting provisions for grounding lug located behind gasketed cover
- Anchor bolts: Four galvanized anchor bolts provided per pole with minimum yield of 55,000 psi (ASTM F1554); Galvanized hardware with two washers and two nuts per bolt for leveling

**Applications:**

- Parking lots
- Pathways
- Site and area

wiSCAPE® Wireless Outdoor Lighting System

Hubbell Control Solutions' wiSCAPE wireless outdoor lighting management system provides insight into the operation of entire sites. Whether used for an office parking lot, a university campus, an airport parking structure, or an entire city, wiSCAPE has the software and hardware solutions needed to monitor, manage and measure the success of the project.



**wiSCAPE Features:**

- Integrates luminaires, sensors and user interfaces using software for a scalable, intelligent control solution
- Simple setup and code compliance using the wiSCAPE software suite
- 24/7 monitoring of each luminaire with alarm notifications via SMS or email
- Commercial-grade metering enables determination of energy consumption by individual luminaires, sites or entire city

**Applications:**

- Parking lots
- Parking decks
- Outdoor area lighting



### Emergency Tower Communication Station

GAI-TRONICS' RED ALERT Tower provides a complete emergency communications station (RED ALERT tower, telephone, and LED strobe all sold separately). The tower is powder-coated with an epoxy finish to withstand harsh environments. The tower stands over nine feet tall with large EMERGENCY graphics on all four sides.



Model #398-001  
Emergency Telephone



Model #234  
RED ALERT Tower



Model #540-001  
LED Strobe

**Emergency Tower Station Features:**

- RED ALERT Tower, architectural bronze, and safety blue standard colors (model #234)
- RED ALERT Emergency Telephone, help, autodial push button, call push button with keypad (model # 398-001)
- LED blue strobe with constant-on feature (model #540-001)

**Applications:**

- Medical grounds
- College campuses
- Parking garages
- Shopping malls
- Sports arenas
- Amusement parks

### Fence Post Connectors

Burndy® mechanical grounding connectors for fence posts and fence mesh. Easy, fast installation for all grounding and bonding applications.



**Fence Post Connector Features:**

- Range taking
- No special tooling required
- Secure connections using bolts or other hardware
- Meets UL467 for Ground and Bonding applications"

**Applications:**

- Parking exterior

### HUBBCOM™ Remote

The HUBBCOM Remote IP device is featured as a door or gate entry device, providing the convenience of card entry with the ability to connect to a live attendant for entry. In addition as a remote monitoring station, HUBBCOM Remote provides clear video from its HD, ONVIF-compatible camera and audio from a built-in microphone. The HUBBCOM™ Remote also gives you the option of making an announcement through the unit's integral speaker.



**HUBBCOM Remote Features:**

- Point-to-point serverless audio and one-way video
- SIP telephone access
- Card access control (RFID or NFC)
- Vertical wide-angle HD camera
- Integral 2W speaker

**Applications:**

- Medical grounds
- College campuses
- Parking garages

### Insulated Secondary Pedestal Connectors

CMC's Insulated Secondary Connectors dual rated for aluminum or copper conductors.

Clear plated for low-contact resistance. Dual-rated for aluminum or copper conductors.



**Secondary Pedestal Connector Features:**

- Connector fabricated from 6061-T6 aluminum alloy for conductivity and strength
- Supplied with radial-tipped set-screws
- Includes CO-OX oxide inhibitor in all conductor holes
- Each unit is individually wrapped and labeled for ease of identification and cleanliness
- Fully tested to ANSI C119.4 for Class 'A' connectors

**Applications:**

- Electrical power distribution
- Electrical connections
- Electrical splices
- Electrical taps

## Streetlight Connector



The DSR-K product is a hinged, single piece clamshell housing, each side filled with pre-cured insulating material and a 6061-T6 aluminum alloy connector.

Simple to use — install the conductors in the connector, position the connector in the cover and close the cover.



### Streetlight Connector Features:

- The housing provides physical protection to the insulating material and provides compression that is essential for the sealing properties
- Fully tested to ANSI C119.4 for Class 'A' connectors

### Applications:

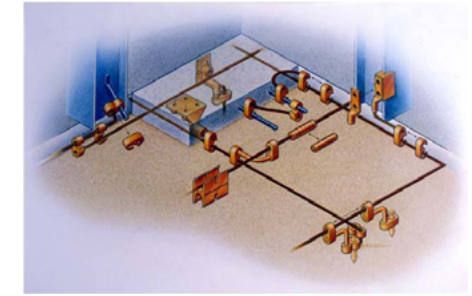
- Streetlights
- Area and site

## Burndy Compression Grounding System



BURNDY® HYGROUND® is an irreversible compression ground system which meets the most stringent safety and performance requirements, including those of OSHA and nuclear power plant design. Performance excellence and long life expectancy are the system's basic design guidelines. It is a complete system which consists of connectors for grid cross connections, taps, splices, cable to ground rod, ground plates and terminations.

The compression made by the BURNDY® HYGROUND® tool and die combination also embosses an identification code on the installed connector.



### Compression Grounding System Features:

- A range-taking tool and die design minimizes inventory and provides for multiple connector combinations
- Pre-crimp dies for ground rod connectors add mechanical strength to help the connectors withstand power installation and maintain IEEE and UL performance
- All compression elements are made of pure wrought copper—the same material as the conductor
- The heavy-duty connector design carries the equivalent or greater current-carrying capacity of the conductor

### Applications:

- Healthcare
- Data centers
- Telecommunications
- Renewable energy
- Petrochem
- Utilities
- Industrial manufacturing

## Stud-Mount Transformer Connectors



CMC NSA uni-joint dual rated connectors for aluminum or copper conductors.

Clear plated for low-contact resistance.



### Transformer Connectors Features:

- Hinged, single piece clamshell housing, each side filled with pre-cured insulating material
- Fabricated from 6061-T6 aluminum alloy
- Housing provides physical protection to the insulating material and provides compression that is essential for the sealing properties
- Clear plated for low-contact resistance
- Fully tested to ANSI C119.4 and C119.1 and Western Underground Guide 2.5

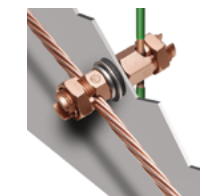
### Applications:

- Electrical transformers

## Mechanical Equipment Grounding



BURNDY® mechanical grounding lugs can be used to adequately ground equipment. All Burndy mechanical grounding connectors have been designed for easy installation and for outstanding durability. Only the finest high copper alloys are used in their manufacture, ensuring top performance under the most extreme environmental conditions.



KCKF



CL



GKA



KPB

### Mechanical Equipment Grounding Features:

- UL 467 Listed for direct burial applications in earth or concrete

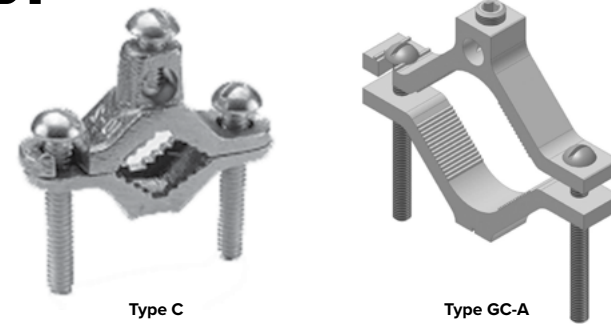
### Applications:

- Equipment Grounding

## Ground Conductor to Water Pipe, Pipe or Conduit

Type C- Cast Bronze Clamps For connecting grounding conductor to water pipe or copper tube. "D" indicates UL 467 Listed for direct burial in earth and concrete and are supplied with silicon bronze hardware.

Type GC-A ground clamps are UL Listed for use with either copper or aluminum conductors to copper water pipe, galvanized pipe, or steel conduit. All clamps are constructed from tin plated high-strength extruded aluminum alloy.



### Connector Features:

Type GC-A:

- Clamps are dual rated for both copper and aluminum conductors providing maximum flexibility of application
- All connectors are tin plated to provide low contact resistance and prevent galvanic corrosion
- All clamps are range taking; only 3 catalog number covers the complete range of applications from 1/2 to 4 inches

### Applications:

- Pipe Grounding

## Type GCS; The CONSTRICTOR™

The Type GCS connector is used to ground cable to steel in applications where drilling is either not possible or unwanted. Installation of the Type GCS connector requires no power tools and is suitable for all applications particularly where power equipment of any kind is not allowed. The CONSTRICTOR™ GCS series of ground connectors are cULus Listed for Grounding and Bonding.



### The CONSTRICTOR™ Features:

- cULus for Grounding and Bonding; Direct Burial rated for installation into earth and concrete
- Accepts beam thickness: .125-.625" (1/8 to 5/8")
- Conductor range from #6 to 2/0
- Versatile; allows parallel or perpendicular conductor orientation
- Stainless steel hardware
- 5/32" Allen cup point screw penetrates coatings on steel
- No special tooling required
- Applicable for use in "extremely volatile environments"

### Applications:

- Healthcare
- Data Centers
- Telecommunications
- Renewable Energy
- Petrochem
- Utilities
- Industrial Manufacturing

## Type SSBC Submersible Pedestal Connectors

Rubber Insulated Submersible Secondary Connectors, Standard spacing, Dual rated connectors for Aluminum or Copper conductors. Each submersible connector we ship is individually packaged and spark tested to ensure reliability. These insulated connectors are approved for submersible and direct-burial designs for use below grade.



### Pedestal Connectors Features:

- Clear plated for low-contact resistance
- Meets the performance requirements of ANSI C119.1, ANSI C119.4 and Western Underground Committee Guide 2.5
- Supplied with aluminum set-screws
- Includes silicone grease and CO-OX oxide inhibitor
- Connector fabricated from 6061-T6 aluminum alloy for conductivity and strength
- Each unit individually wrapped and labeled for ease of identification and cleanliness

### Applications:

- Underground

## Weatherproof Electrical Box

1-gang Weatherproof Electrical Box features 3 threaded 1/2" outlets



### Weatherproof Electrical Box Features:

- Rugged die-cast aluminum construction
- Powder coat finish for maximum weatherability and scratch resistance
- Eight box mounting options with detachable lugs
- Includes two 1/2" closure plugs
- NEMA compliant internal hub threads accept all threaded fittings and threaded conduit
- Ground screw installed

### Applications:

- Building exteriors
- Rooftop
- Parking

**Pad Mounted Termination Enclosures**

CMC pad mounted termination enclosures Provides a safe and convenient primary cable terminating, sectionalizing, tapping, and switching point for underground distribution systems.

Aluminum mechanical bar connector eliminates compression tools, lugs and bolt assemblies. Aluminum enclosure is lightweight, low maintenance and has excellent corrosion resistance. Ample working space, allowing for easier termination with a removable swinging door.



**Termination Enclosure Features:**

- Heavy-Duty channelized construction
- Standard cabinet is fabricated from 14 gauge galvanized steel
- Also available in stainless steel or aluminum (contact rep)
- Heavy duty wind locks are standard on all models
- Custom sizes and special junction mounting brackets available
- Stainless steel hinge barrels, pins, padlock hasp, and exterior hardware
- Ground nut provision for each phase. Units shipped completely assembled (except Junctions)

**Applications:**

- Electrical power distribution
- Medical campuses
- Commercial facilities
- Solar applications

**Below Ground Enclosures**

Polymer concrete boxes positioned below grade, covers positioned at grade to house and protect utility components such as electrical, communications and water.



**Below Ground Enclosure Features:**

- High strength and durable
- Lighter weight than standard concrete
- Stable under freeze/thaw conditions
- Non-conductive and nonflammable
- Impact resistant
- UL listed and ASNI/SCTE 77 tier rated
- Multiple styles and sizes to meet vast application needs

**Applications:**

- Parking and exterior/perimeter of facility

**Above Ground Enclosures**

Outdoor above ground backflow device enclosures in aluminum, fiberglass and HDPE which provide protection for outdoor infrastructure and piping systems.



**Above Ground Enclosure Features:**

- High quality, customizable options for all backflow applications
- Superior insulation aids in protection from outside temperatures
- Corrosion & scratch resistant external materials
- Quick and easy installation whether pre-assembled or modular
- Multiple material types; aluminum, fiberglass and HPDE
- Various options and added accessories for easy customization
- ASSE 1060 certified

**Applications:**

- Parking and exterior/perimeter of facility

**MX3200 1-gang In-Use Weatherproof Cover**

TayMac 1-Gang EXTRA DUTY Vertical Weatherproof In-Use Cover is designed to provide weatherproof protection while an outlet is in-use.



**MX3200 Features:**

- Heavy duty die-cast metal construction with premium powder coat finish
- Quick-Fit keyhole mounting system allows installation in under a minute
- Universal Fit Adapter System Technology (U-Fast) for 8-in-1 custom device configurations
- Comes pre-configured for GFCI
- Includes attached gasket and mounting hardware
- 3-1/8" deep
- Lockable tab
- Extra Duty rated
- Vertical mount

**Applications:**

- Building exteriors
- Rooftop
- Parking

**ML500 Expandable 1-gang In-Use Weatherproof Cover**

TayMac 1-Gang EXTRA DUTY Expandable Weatherproof In-Use Cover is designed to provide weatherproof protection while an outlet is in-use and stay out of the way when not in-use.



**ML500 Features:**

- Revolutionary design expands from 1" to 3" for In-Use needs
- Ultra-rugged polycarbonate & synthetic neoprene rubber that will not dry rot, crack or deteriorate in sunlight
- Quick-Fit keyhole mounting system allows installation under a minute
- Universal Fit Adapter System Technology (U-Fast) for 16-in-1 custom device configurations, comes pre-configured for GFCI
- NEMA 3R compliant

**Applications:**

- Building exteriors
- Rooftop
- Parking

**Instant Streetlight Foundation**

Chance Instant Foundation Solutions streetlight foundation offers immediate loading—no wait for concrete to cure. Remove and reuse the foundation. Simply reverse the motor to back out. Designed and engineered in the USA. Quick and easy installation using standard hydraulic equipment. Installs in most weather conditions, even below freezing. No excavation or spoil removal. Commonly installed in 10 minutes with a two-man crew.



**Instant Streetlight Foundation Features:**

- Variable 9–14" bolt circle
- 4 slots, 1" diameter x 4" long
- 6-5/8" OD x 60" long
- 1" thick x 12" square base plate, variable circle
- Hardware included

**Applications:**

- Parking
- Exterior

**Instant Bollard Foundation**

Chance Instant Foundation Solutions bollard foundation offers immediate loading—no wait time for concrete to cure. Remove and reuse the foundation. Simply reverse the motor to back out. Designed and engineered in the USA. Quick and easy installation using standard hydraulic equipment. Installs in most weather conditions, even below freezing. No excavation or spoil removal. Commonly installed in 10 minutes with a two-man crew.



**Instant Bollard Foundation Features:**

- Variable 4–8" bolt circle
- 4 slots, 1/2" diameter x 2-1/4" long
- 2-3/8" OD x 36" long
- 1/2" thick x 7" square base plate, variable circle
- Hardware included

**Applications:**

- Parking
- Exterior

Roof



TRP2 GeoPak

Mid sized architectural wallpacks in three stylish shapes with molded contours to accentuate building architecture. Provides excellent illumination in energy-saving LED systems.



TRP2 GeoPak Features:

- Type I, II, III and IV distributions for a wide variety of applications
- Low glare asymmetric optics for optimal performance and visual comfort
- Easy to install and retrofit existing HID luminaires with similar footprint
- Control capabilities offer additional energy savings options
- Integral battery backup options
- Option uplight graze, spot and canopy distributions

Applications:

- Building mount applications
- Egress
- Facade

Wiring Devices

Hubbell Advantage™ Series Pin and Sleeve Device

Hubbell's Advantage Series Pin and Sleeve devices provide safe, dependable electrical performance in a variety of environments.

Hubbell combined the advantages of their top performing IEC pin and sleeve with the capabilities of a UL 2682 switch-rated device. Hubbell's standard industrial pin and sleeve is HP rated and recognized as a disconnecting means. The Advantage Series provides the only Switch-Rated IEC Pin and Sleeve Devices in the market. By working with existing installed IEC 60309-2 pin and sleeve plug and inlet bases, customers save both time and money.

The Advantage Series are UL witnesses IP69K and UL Type 4X and 12 devices. They are designed for use in harsh environments — the devices offer protection against water and dust, even during times of high water flow or in areas the excessive amounts of dust.



**Ergonomic Design**  
The easy-to-use leverage grip design from Hubbell puts the Advantage into the palm of your hands.

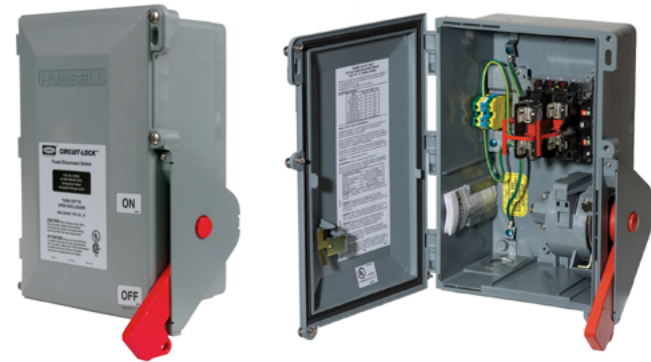
30A Advantage Series Switched P&S

Rating Color Coded by Voltage	Poles/Wires	Connector	Receptacle	Mating Plug*
30A 125V	2P/3W	HBLS330C4W	HBLS330R4W	HBLS330P4W
30A 250V	2P/3W	HBLS330C6W	HBLS330R6W	HBLS330P6W
30A 125/250V	3P/4W	HBLS430C12W	HBLS430R12W	HBLS430P12W
30A 3Ø 480V	3P/4W	HBLS430C7W	HBLS430R7W	HBLS430P7W
30A 3Ø 600V	3P/4W	HBLS430C5W	HBLS430R5W	HBLS430P5W
30A 3ØY 277/480V	4P/5W	HBLS530C7W	HBLS530R7W	HBLS530P7W

\*Mating plug required to maintain 4X/IP69k ratings. HP Ratings when used with Advantage Series connections. Additional devices available.

## Circuit-Lock Fused Disconnect Switches

When it comes to safely shutting down power, nothing performs like Hubbell Circuit-Lock. Required by the NEC® within line of sight of all motor controllers and power driven equipment, Hubbell Circuit-Lock Disconnect Switches feature a highly-visible red handle that can be locked in the off position to comply with OSHA lockout-tagout requirements. Housed in a corrosion and impact-resistant Type 4X enclosure with a watertight neoprene gasket, Hubbell Circuit-Lock Disconnect Switches are UL listed as both a motor controller and disconnect for maximum value. Circuit-Lock Disconnect Switches are available in 30, 60 and 100 Amp 600-Volt AC ratings with available auxiliary contacts for various control applications.



### 30 and 60 Amp Fused Disconnect Switches

Description	Catalog Number
30A Circuit-Lock fused disconnect switch.	FDS30
60A Circuit-Lock fused disconnect switch.	FDS60

### Auxiliary Contacts

Description	Catalog Number
Auxiliary contact, normally open, A600 pilot duty.	ACFSNO
Auxiliary contact, normally closed, A600 pilot duty.	ACFSNC

## WEEB® Grounding Lug



The WEEB® Grounding Lug is constructed of corrosion resistant, tin-plated copper, the Wiley line of grounding lugs are high quality solutions for your solar PV system. The tin-plated lug assures minimum contact resistance and protection against corrosion. The low profile of the grounding lug allows it to be installed in a variety of positions with one solid or stranded copper wire (14 AWG to 6 AWG), or two copper wires (12 AWG to 10 AWG). Copper wire is secured by a 1/4-28 stainless steel screw, which is horizontal to the tang. This allows for easy access when mounted under a PV module. The result is a continuous ground on all solar applications.



### Grounding Lug Features:

- Made of corrosion-resistant, tin-plated copper
- Design ensures a quick and easy installation
- No surface preparation required on the rail or module
- Reliability for use throughout the lifetime of the PV system
- UL 2703 Listed
- ETL Listed to ANSI/UL 467
- CSA Certified to C22.2 No. 41

### Applications:

- Solar PV System

## WEEB® Washer



WEEB is inserted between the module frame and mounting structure, the teeth of the WEEB pierce the anodized coating. The result is excellent conductivity without oxidation — bonding the PV module frame with the metal racking structure. Essentially, the module and rail become one singular piece of metal, creating an electrical path to the ground.

WEEB® washers eliminate the need for older, more expensive grounding methods while also significantly reducing the amount of labor and materials used in installations.



### WEEB Washer Features:

- ETL Listed to ANSI/UL 467
- UL Recognized to UL 2703
- CSA Certified to C22.2 No. 41
- Corrosion-resistant 304 stainless-steel construction
- Reliability for use throughout the lifetime of the PV system
- Rated for outdoor use
- Multiuse

### Applications:

- Exterior

## WEEB® Bonding Jumper



The WEEB® Bonding Jumper is constructed of corrosion resistant, tin-plated, braided copper, the Wiley line of bonding jumpers are high quality solutions for your solar PV system. The WEEB® Bonding Jumper is used to create an electrical connection between two pieces of anodized aluminum or any electrically conductive metal. This maintains electrical continuity over long spans or air gaps between metal structures.



### WEEB® Bonding Jumper Features:

- Equivalent to 6AWG
- In-stock standard lengths from 6" to 36"
- 10, 8 and 4 AWG options available
- UL 2703 Listed
- ETL Listed to ANSI/UL 467
- CSA Certified to C22.2 No. 41

### Applications:

- Solar PV System

ACE Conduit Entry Box

The ACE Conduit Entry Box makes quick and simple transitions from USE-2 or PV array wire to conduit protected THWN-2 wire. The box features a compact two-piece UV resistant, NEMA 3R rated enclosure that allows ample wiring space and is compatible with any conduit type.



ACE Conduit Entry Box Features:

- Convenient side and bottom conduit drill-out for easy conduit routing
- Choice of pass-through or combiner box with bracket
- Compatible with any conduit type
- Preassembled for quick and easy installation
- UL 1741 Listed
- 1000V DC rating

Applications:

- Solar PV System

Solar Mid-Clamp

The universal mid-clamp and adjustable end clamp designs accommodate various module thicknesses. Plus, the Wiley Mid-Clamp uses proven WEEB® technology for integrated bonding as well as a quick and easy installation.



Solar Mid-Clamp Features:

- Low profile design
- Increased inspectability
- Available in mill finish, or black or clear anodizing
- Custom designs and finishes available upon request
- Reliability for use throughout the lifetime of the PV system
- ETL Listed to ANSI/UL 467
- UL Recognized to UL 2703

Applications:

- Solar PV system

Solar Module Cable Clips

Engineered for high quality wire management solutions, Wiley Cable Clips simplify wire management and create a cleaner aesthetic to solar PV arrays. The clips are made of corrosion resistant stainless steel, which makes them a durable, long lasting and reliable solution for all environments, and are designed with coined edges to prevent damage to cable insulation.



Solar Module Cable Clips Features:

- Accommodation for a broad range of cable combinations and sizes (e.g., USE-2, PV, AC module and micro inverter cables)
- Compatible on modules with a flange thickness range of 1.3 to 2.5mm
- No tools required for installation
- Multiuse capabilities
- Coined edges to prevent damage to cable insulation
- Reliability for use throughout the lifetime of the PV system
- UL 1565 Listed

Applications:

- Solar PV System

Insulated Bundle Strap

The Wiley reusable insulated bundle straps protect cables from vibration and insulation damage. Use for bundling PV wire, Micro Inverter Trunk or AC cable - 2" bundle diameter. Made with vinyl coated steel.



Insulated Bundle Strap Features:

- UV resistant vinyl, zinc plated steel
- Reusable coated bundle strap
- -40°C to 85°C
- 50 lb tensile strength

Applications:

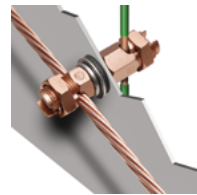
- Solar PV system



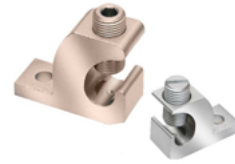
## Grounding & Bonding

### Mechanical Equipment Grounding

BURNDY® mechanical grounding lugs can be used to adequately ground equipment. All Burndy mechanical grounding connectors have been designed for easy installation and for outstanding durability. Only the finest high copper alloys are used in their manufacture, ensuring top performance under the most extreme environmental conditions.



KCKF



CL



GKA



KPB

#### Mechanical Equipment Grounding Features:

- UL 467 Listed for direct burial applications in earth or concrete

#### Applications:

- Equipment Grounding

## Enclosures & Boxes

### NEMA 4X JIC Continuous Hinge Electrical Enclosure

Wiegmann NEMA 4X JIC Continuous Hinge Quarter Turn 12X12X6 304 Stainless Steel.

The Ultimate Mini-Max series enclosures are designed to house and protect electrical and electronic components in harsh, dirty environments. Streamlined styling, quarter-turn latch, and attractive durable finish complement any high tech electronic equipment.



#### NEMA 4X JIC Enclosure Features:

- 1/4 turn style JIC enclosure makes for easy door seal
- Eliminates the need for exterior clips to secure door shut
- 1/4 turn latch is interchangeable with many locking designs available to better suit the customer
- FTC flange around the entire door opening to channel liquids away
- Available in light grained finish 304 or 316 stainless steel

#### Applications:

- Medical grounds
- Parking garages
- Food services



**Patient Rooms (Finished)..... 6**

**Lighting**

MediMode™ Behavioral .....7  
Evexia LED Ambient/Reading Bed Light.....7  
Niteway™ ..... 8  
LITEISTRY™ Family ..... 8

**Lighting Controls**

NX Distributed Intelligence™ ..... 9

**Wiring Devices**

SNAPConnect® Style Line® Illuminated Switches 9  
Extra Heavy Duty GFCI Receptacles .....10  
UL2930 Healthcare Facility Outlet Assemblies..10  
SNAPConnect® Hospital Grade Decorator LED Indicator Receptacles .....11  
Hospital Grade Illuminated Receptacles .....11  
Stainless Steel Wallplates.....12  
USB Charger Receptacles.....12  
Insulgrip® Hospital Grade Valise® Plugs and Connectors.....13  
Hubbell-PRO Hospital Call Switch with Lanyard 13  
Combination Wireless Wall Mount Charger & USB Outlet.....14

**Communications**

HUBBCOM™ IP Devices.....14  
Data Jacks .....15  
iSTATION Front-Loading Plates and Modules.....15  
110 RCA Component Video Modules .....16  
Recessed AV In-Wall Enclosure (FPTV).....16

**Patient Rooms (Rough-In)..... 18**

**Lighting**

HUBBELL LED 120 Watt High Bay Temporary / Industrial Light .....19

**Wiring Devices**

HUBBELL Spider® Temporary Power Box .....19

**Grounding & Bonding**

Compression Tap Connectors.....20  
Compression Terminal Connectors.....20  
PAT644LI Battery Actuated Crimping Tool.....21  
PAT750LI Battery Actuated Crimping Tool.....21

**Cable & Wire Management**

CT Series Cable Ties .....22  
CTSS-Series Cable Ties .....22  
LOOM Split Tubing .....23  
Heat Shrink.....23  
Wire Basket Tray .....24

**Rough-In**

Recessed AV In-Wall Enclosure (FPTV).....24  
Hubbell SystemOne Furniture Feed Poke-Throughs 25  
Stab-iT® & Stab-iT® II Boxes .....25  
Adjustable Mud Rings.....26  
Gangable Data/AV Boxes .....26  
Red Life Safety Adapter Ring .....27  
Grand Slam Box .....27

RACO 9016R and 9024R Open Center Brackets with Built-in Cable Management.....28  
RACO 9020R Adjustable Open Center Bracket28  
RACO 260H Large Capacity Data/Power Box ...29  
SNAPConnect® Right Angle Pigtailed Connectors 29

**Nurses' Stations ..... 30**

**Lighting**

LCAT .....31  
MOD™x 4L LED Recessed Slot.....31  
LITEISTRY™ Family .....32

**Lighting Controls**

NX Distributed Intelligence™ .....32

**Wiring Devices**

USB Charger Receptacles.....33  
Hubbell SystemOne Fully Adjustable 4-Inch Recessed Floor Box .....33  
SNAPConnect® Hospital Grade Isolated Ground Receptacles.....34  
SNAPConnect® Hospital Grade Decorator LED Indicator Receptacles .....34  
Hospital Grade Surge Protection Receptacles ..35  
Combination Wireless Wall Mount Charger & USB Outlet .....35

**Communications**

HUBBCOM™ IP Devices.....36  
Data Jacks .....36

**Cable & Wire Management**

Hubbell X-End AV Plug-n-Play System.....37  
HBLALU4800 Series Two Channel Aluminum Raceway.....37

**Clinical Laboratories..... 38**

**Lighting**

CFP .....39

**Lighting Controls**

NX Distributed Intelligence™ .....39

**Wiring Devices**

USB Charger Receptacles.....40  
Illuminated Toggle Switches .....40  
PolyTuff® Non-Metallic Liquidtight Conduit System 41  
Stainless Steel Wallplates.....41  
Hospital Grade Surge Protection Receptacles ..42  
H-MOSS® Wireless Sensors and Controls .....42

**Communications**

Clean Phone® VoIP Telephone (Wall-Mount), UL 43  
Clean Room Speaker; 8-ohm impedance ..... 43

**Cable & Wire Management**

HBLALU4800 Series Two Channel Aluminum Raceway.....44

**Rough-In**

Hubbell SystemOne Furniture Feed Poke-Throughs 44

**Surgical Suites..... 46**

**Wiring Devices**

Stainless Steel Wallplates..... 47  
Hospital Grade Insulgrip® Plugs and Connectors47  
Hospital Grade Receptacles .....48  
Illuminated Toggle Switches .....48  
Mobile X-Ray Devices.....49  
Hospital Grade Surge Protection Receptacles..49

**Communications**

Clean Phone® VoIP Telephone (Wall-Mount), UL50  
Clean Room Speaker; 8-ohm impedance .....50  
Data Jacks .....51  
Hubbell iSTATION HDMI Connectors.....51  
iSTATION Front-Loading Plates and Modules...52

**Common Areas & Public Spaces ..... 54**

**Lighting**

LE Series .....55  
MOD™x 4L LED Recessed Slot.....55  
Inde-Pendants Series .....56  
LITEISTRY™ Family .....56

**Lighting Controls**

NX Distributed Intelligence™ .....57  
Adaptive Technology Ceiling Sensors .....57

**Wiring Devices**

Table Top Boxes .....58  
Tamper-Resistant Receptacles .....58  
USB Charger Receptacles.....59

**Communications**

HUBBCOM™ IP Devices.....59  
Behavioral Health Surface-Mount VoIP Telephone 60  
Data Jacks .....60  
Wireless Access Box.....61

**Rough-In**

Hubbell SystemOne Furniture Feed Poke-Throughs 61

**Corridors & Stairwells ..... 62**

**Lighting**

LCAT .....63  
Escalate™ Stairwell Luminaire .....63  
SE Series.....64  
EVC Series.....64

**Wiring Devices**

**Communications**

Hospital Grade Receptacles .....65  
HUBBCOM™ IP Devices.....65  
RED ALERT® VoIP Hands-free Emergency Telephone.....66

**Office & Meeting Spaces..... 68**

**Lighting**

Arcos® 13L LED Pendant Indirect/Direct.....69  
MOD™x 6L LED Pendant Indirect/Direct.....69

LE Series .....70  
Versify™ Architectural Edge-Lit .....70

**Lighting Controls**

NX Distributed Intelligence™ .....71  
Adaptive Technology Ceiling Sensors .....71

**Wiring Devices**

Isolated Ground Receptacles .....72  
SNAPConnect® USB Charger Receptacles .....72  
Surge Protection Receptacles.....73  
Combination Wireless Wall Mount Charger & USB Outlet .....73

**Communications**

HUBBCOM™ IP Devices.....74  
Data Jacks .....74

**Rough-In**

Hubbell iSTATION Furniture Plates.....75  
Hubbell SystemOne Furniture Feed Poke-Throughs 75

**Data Centers..... 76**

**Lighting**

LCAT .....77  
MultiPurpose Linear - MPS .....77

**Lighting Controls**

NX Distributed Intelligence™ .....78  
NX Area Controller .....78  
NX Lighting Control Panels (8,16, 24, 32 and 48 Relays) .....79

**Wiring Devices**

Extra Heavy Duty Receptacles.....79  
Hubbell Advantage™ Series Pin and Sleeve Device 80  
Hubbell Twist-Lock® Locking Devices.....80

**Communications**

HUBBCOM™ IP Devices.....81  
H2 Series Cabinets .....81  
NEXTSPEED® Ascent Category 6A Patch Panels82  
Hubbell OptiChannel Rack Enclosures.....82

**Grounding & Bonding**

PAT750LI Battery Actuated Crimping Tool.....83  
Grounding and Bonding Systems .....83  
BGRKTV In-Cabinet Grounding Kit.....84  
BGRKTHC On-Rail Busbar Grounding Kit.....84  
BGRKTD30DN Ground Conductor/Jumper Kit ..85  
BGRKTD9D Ground Conductor/Jumper Kit.....85  
BGRKTBW5 Ground Conductor/Jumper Kit .....86  
WEEB® Two Hole Telecom Washer.....86

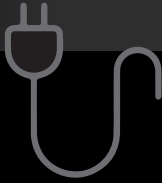
**Cable & Wire Management**

Type BTCGC Cable Tray Clamp .....87  
Wire Basket Tray .....87  
Under Floor Wire Basket Tray .....88  
NEXTFRAME® Ladder Tray.....88

**Transformer**

General Purpose Dry-Type Distribution Transformers .....89





## COMMERCIAL AND INDUSTRIAL PRODUCT CATEGORIES

- WIRING DEVICES & ACCESSORIES
- PLUGS & RECEPTACLES
- SWITCHES & DIMMERS
- DATACOM CONNECTIVITY & ENCLOSURES
- PIN & SLEEVE DEVICES
- JUNCTION BOXES
- CABLE REELS
- STEEL & PLASTIC ENCLOSURES
- GROUND FAULT DEVICES
- ELECTRICAL MOTOR CONTROLS



## LIGHTING AND CONTROLS PRODUCT CATEGORIES

- CANOPY LIGHTS
- PARKING LOT/PARKING GARAGE FIXTURES
- EMERGENCY LIGHTING/EXIT SIGNS
- BATH/VANITY FIXTURES & CEILING FANS
- ARCHITECTURAL LIGHTING & SCONCES
- OCCUPANCY, DIMMING & DAYLIGHT HARVESTING SENSORS
- DECORATIVE LANDSCAPE FIXTURES
- BOLLARDS
- FLOODLIGHTS & POLES
- SITE & AREA LIGHTING
- RECESSED, SURFACE MOUNTED & TRACK FIXTURES



## CONSTRUCTION AND ENERGY PRODUCT CATEGORIES

- MECHANICAL CONNECTORS GAS CONNECTORS AND ASSEMBLIES
- MECHANICAL GROUNDING DEVICES
- MINING COMMUNICATION & CONTROLS
- SPECIALTY LIGHTING
- SAFETY EQUIPMENT
- SPECIALTY COMMUNICATIONS EQUIPMENT
- INSTALLATION TOOLING
- COMPRESSION CONNECTORS
- CABLE GLANDS & FITTINGS



## POWER SYSTEMS PRODUCT CATEGORIES

- ARRESTERS
- GROUNDING & BONDING EQUIPMENT
- INSULATORS
- POLE LINE HARDWARE
- SECTIONALIZERS
- FORMED WIRE PRODUCTS
- OVERHEAD, PAD MOUNTED & CAPACITOR SWITCHES
- METER INSTALLATION SERVICES
- ADVANCED METERING INFRASTRUCTURE
- METERS AND EDGE DEVICES
- BUSHINGS
- CUTOUTS & FUSE LINKS
- PROGRAMMABLE RECLOSERS
- CABLE TERMINATIONS & ACCESSORIES
- HELICAL ANCHORS & FOUNDATIONS
- LINEMAN TOOLS, HOSES & GLOVES
- SPLICES, TAPS & CONNECTORS
- POLYMER CONCRETE & FIBERGLASS ENCLOSURES AND EQUIPMENT PADS



Hubbell Incorporated  
40 Waterview Drive  
Shelton, Connecticut 06484  
[www.hubbell.com](http://www.hubbell.com)